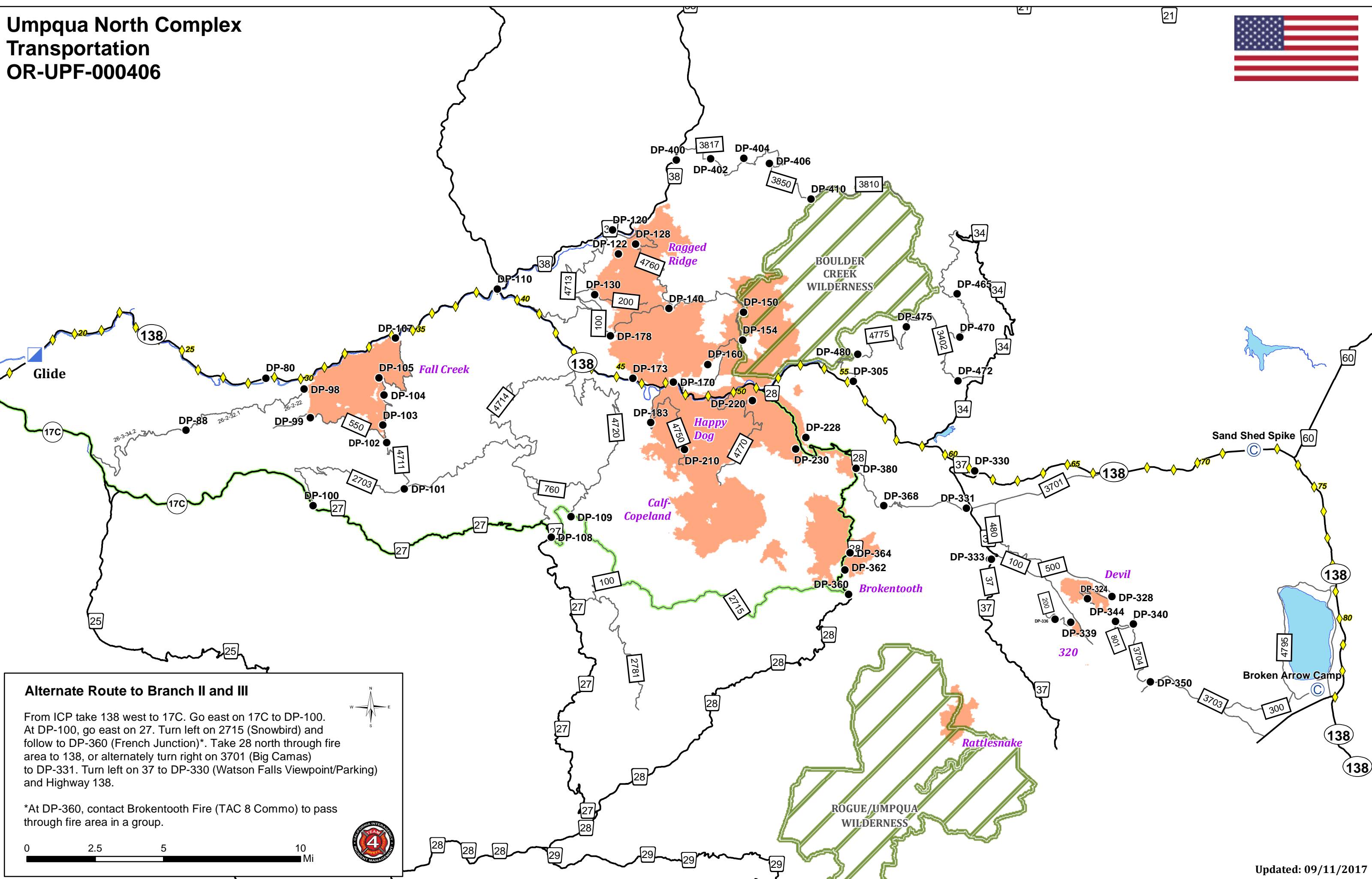


# Umpqua North Complex Transportation OR-UPF-000406



### Alternate Route to Branch II and III

From ICP take 138 west to 17C. Go east on 17C to DP-100. At DP-100, go east on 27. Turn left on 2715 (Snowbird) and follow to DP-360 (French Junction)\*. Take 28 north through fire area to 138, or alternately turn right on 3701 (Big Camas) to DP-331. Turn left on 37 to DP-330 (Watson Falls Viewpoint/Parking) and Highway 138.

\*At DP-360, contact Broketooth Fire (TAC 8 Commo) to pass through fire area in a group.

