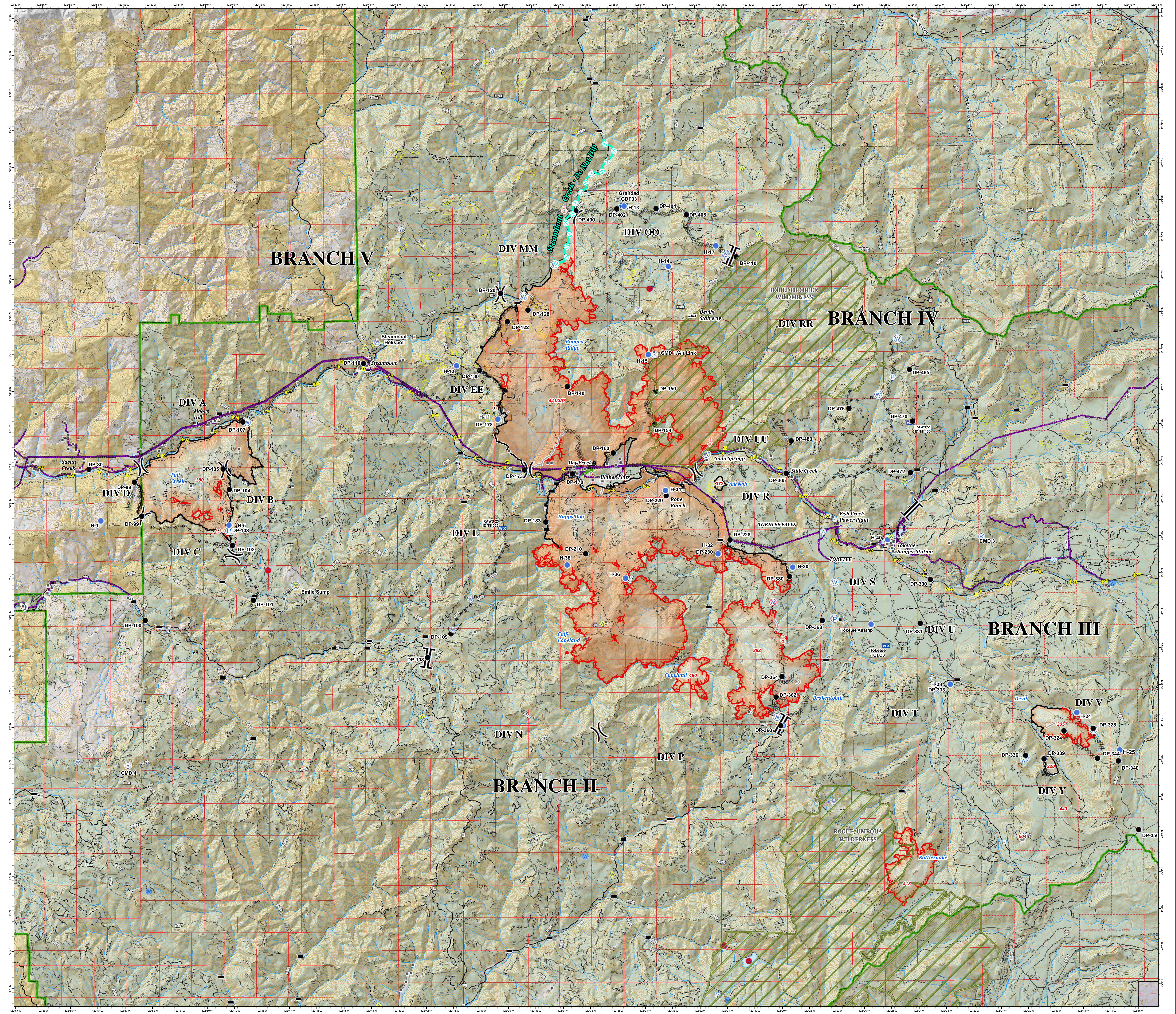


# Operations

## Umpqua North Complex

OR-UPF-000406  
09/14/2017  
Whole Complex



- Structures
- Drop Point
- 🚒 Fire Location
- 🚁 Unimproved Landing Area
- 📍 Helispot
- 🚚 Mobile Weather Unit
- ⚙️ Pump
- 📡 Repeater
- 🔥 Spot Fire
- 📍 Staging Area
- 💧 Water Source
- 🚫 Restricted Water Source
- ⏸️ Division Break
- ⏸️ Branch Break
- 📍 Dip Sites
- 🚫 Do Not Use
- 🚫 Restricted
- 👍 OK With Consult
- 👍 OK
- ⚡ Powerline
- 🚚 Steamboat Creek - Do Not Dip
- 🔥 Uncontrolled Fire Edge
- Completed Line
- 🚧 Completed Dozer Line
- Completed Hand Line
- ⚡ Road as Completed Line
- 🚚 Escape Route
- 🌲 National Forest Boundary
- 🏠 Bureau of Land Management
- 🌲 National Park Service
- 🏠 Private
- 🌲 United States Forest Service
- 🌲 Wilderness

