

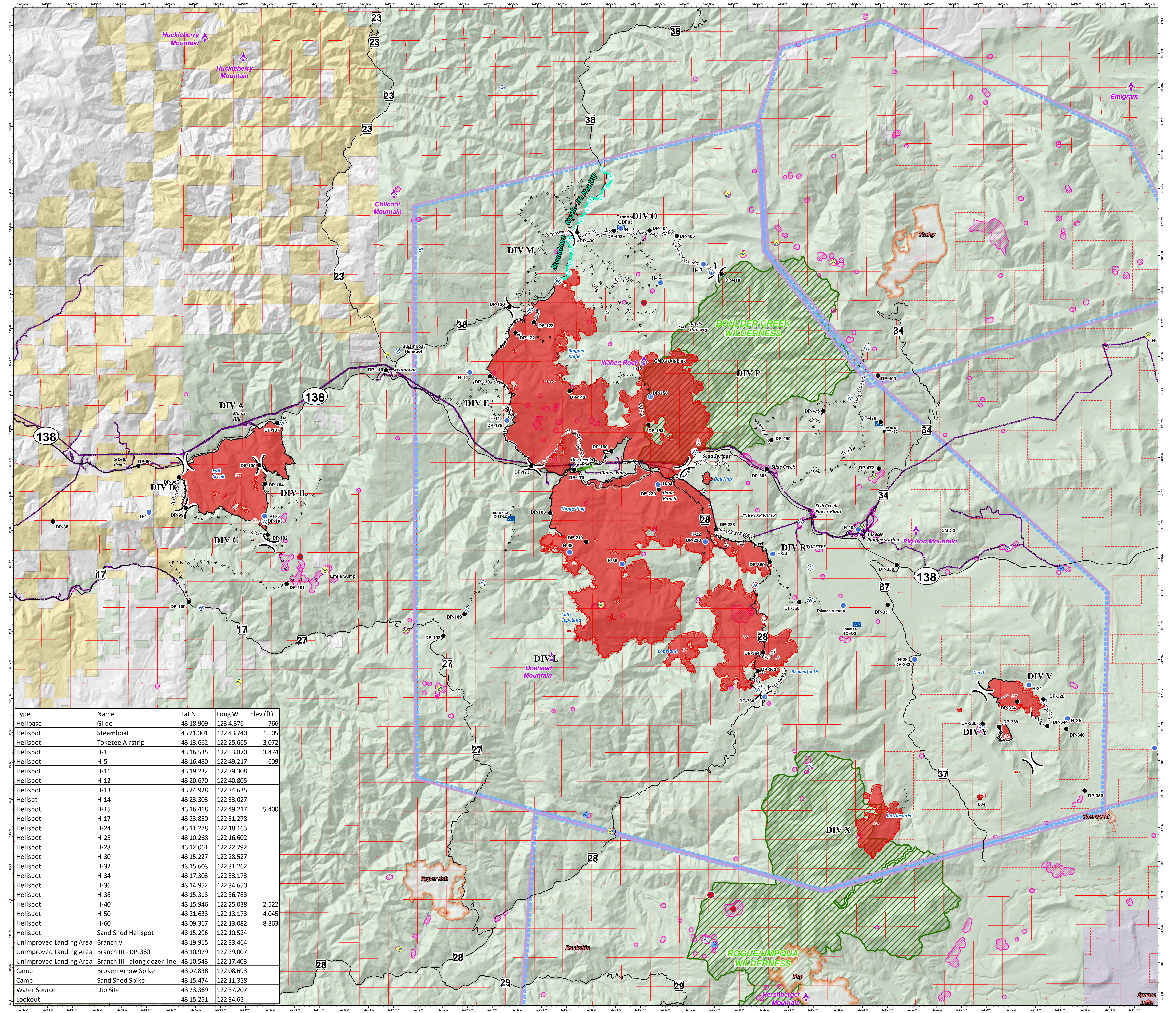
Air Operations

Umpqua North Complex

OR-UPF-000406
09/16/2017



- Drop Point
- Fire Location
- Unimproved Landing Area
- Helispot
- W Mobile Weather Unit
- Spot Fire
- W Water Source
- W Restricted Water Source
-) Division Break
- Do Not Use
- W Restricted
- W OK With Consult
- W OK
- Uncontrolled Fire Edge
- Completed Line
- Completed Dozer Line
- Completed Hand Line
- Road as Completed Line
- Escape Route
- Wildlife Daily Fire Penetration
- Powerline
- Steamboat Creek - Do Not Dip
- TFR
- Aerial Fire Retardant Avoidance Area
- Wilderness
- Bureau of Land Management
- National Park Service
- Private
- United States Forest Service



| Type | Name | Lat N | Long W | Elev (ft) |
|-------------------------|-------------------------------|-----------|------------|-----------|
| Helibase | Glide | 43 18.909 | 123 4.376 | 766 |
| Helispot | Steamboat | 43 21.301 | 122 43.740 | 1,505 |
| Helispot | Toketee Airstrip | 43 13.662 | 122 25.665 | 3,072 |
| Helispot | H-1 | 43 16.535 | 122 53.870 | 3,474 |
| Helispot | H-5 | 43 16.480 | 122 49.217 | 609 |
| Helispot | H-11 | 43 19.232 | 122 39.308 | |
| Helispot | H-12 | 43 20.670 | 122 40.805 | |
| Helispot | H-13 | 43 24.928 | 122 34.635 | |
| Helispot | H-14 | 43 23.303 | 122 33.027 | |
| Helispot | H-15 | 43 16.418 | 122 49.217 | 5,400 |
| Helispot | H-17 | 43 23.850 | 122 31.278 | |
| Helispot | H-24 | 43 11.278 | 122 18.163 | |
| Helispot | H-25 | 43 10.268 | 122 16.602 | |
| Helispot | H-28 | 43 12.061 | 122 22.792 | |
| Helispot | H-30 | 43 15.227 | 122 28.527 | |
| Helispot | H-32 | 43 15.603 | 122 31.262 | |
| Helispot | H-34 | 43 17.303 | 122 33.173 | |
| Helispot | H-36 | 43 14.952 | 122 34.650 | |
| Helispot | H-38 | 43 15.313 | 122 36.783 | |
| Helispot | H-40 | 43 15.946 | 122 25.038 | 2,522 |
| Helispot | H-50 | 43 21.633 | 122 13.173 | 4,045 |
| Helispot | H-60 | 43 09.367 | 122 13.082 | 8,363 |
| Helispot | Sand Shed Helispot | 43 15.296 | 122 10.524 | |
| Unimproved Landing Area | Branch V | 43 19.915 | 122 33.464 | |
| Unimproved Landing Area | Branch III - DP-360 | 43 10.979 | 122 29.007 | |
| Unimproved Landing Area | Branch III - along dozer line | 43 10.543 | 122 17.403 | |
| Camp | Broken Arrow Spike | 43 07.838 | 122 08.693 | |
| Camp | Sand Shed Spike | 43 15.474 | 122 11.358 | |
| Water Source | Dip Site | 43 23.369 | 122 37.207 | |
| Lookout | | 43 15.251 | 122 34.65 | |

