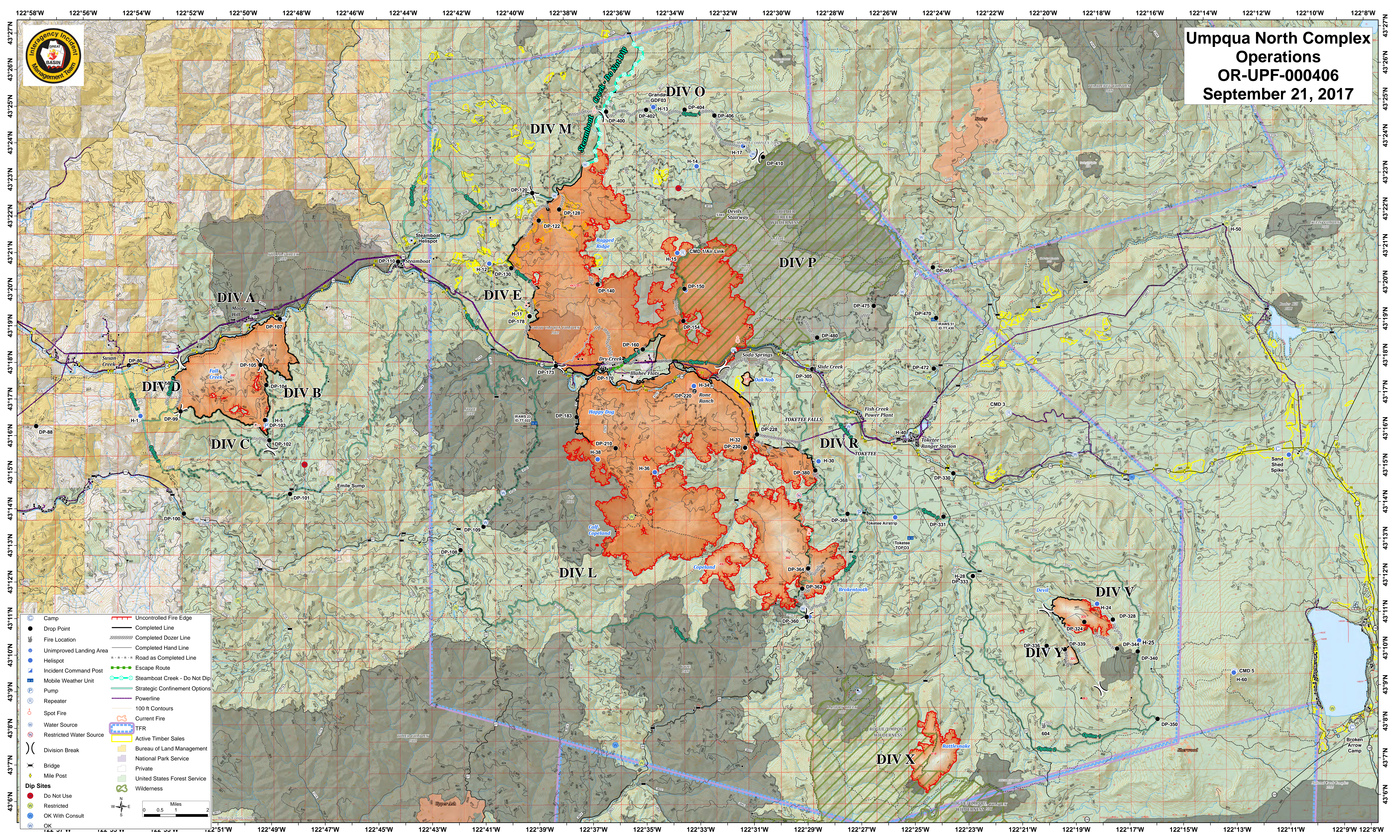




Umpqua North Complex Operations

OR-UPF-000406

September 21, 2017



| | | | |
|--|-------------------------|--|-------------------------------|
| | Camp | | Uncontrolled Fire Edge |
| | Drop Point | | Completed Line |
| | Fire Location | | Completed Dozer Line |
| | Unimproved Landing Area | | Completed Hand Line |
| | Helispot | | Road as Completed Line |
| | Incident Command Post | | Escape Route |
| | Mobile Weather Unit | | Steamboat Creek - Do Not Dip |
| | Pump | | Strategic Confinement Options |
| | Repeater | | Powerline |
| | Spot Fire | | 100 ft Contours |
| | Water Source | | Current Fire |
| | Restricted Water Source | | TFR |
| | Division Break | | Active Timber Sales |
| | Bridge | | Bureau of Land Management |
| | Mile Post | | National Park Service |
| | Dip Sites | | Private |
| | Do Not Use | | United States Forest Service |
| | Restricted | | Wilderness |
| | OK With Consult | | |
| | OK | | |

