

Air Operations

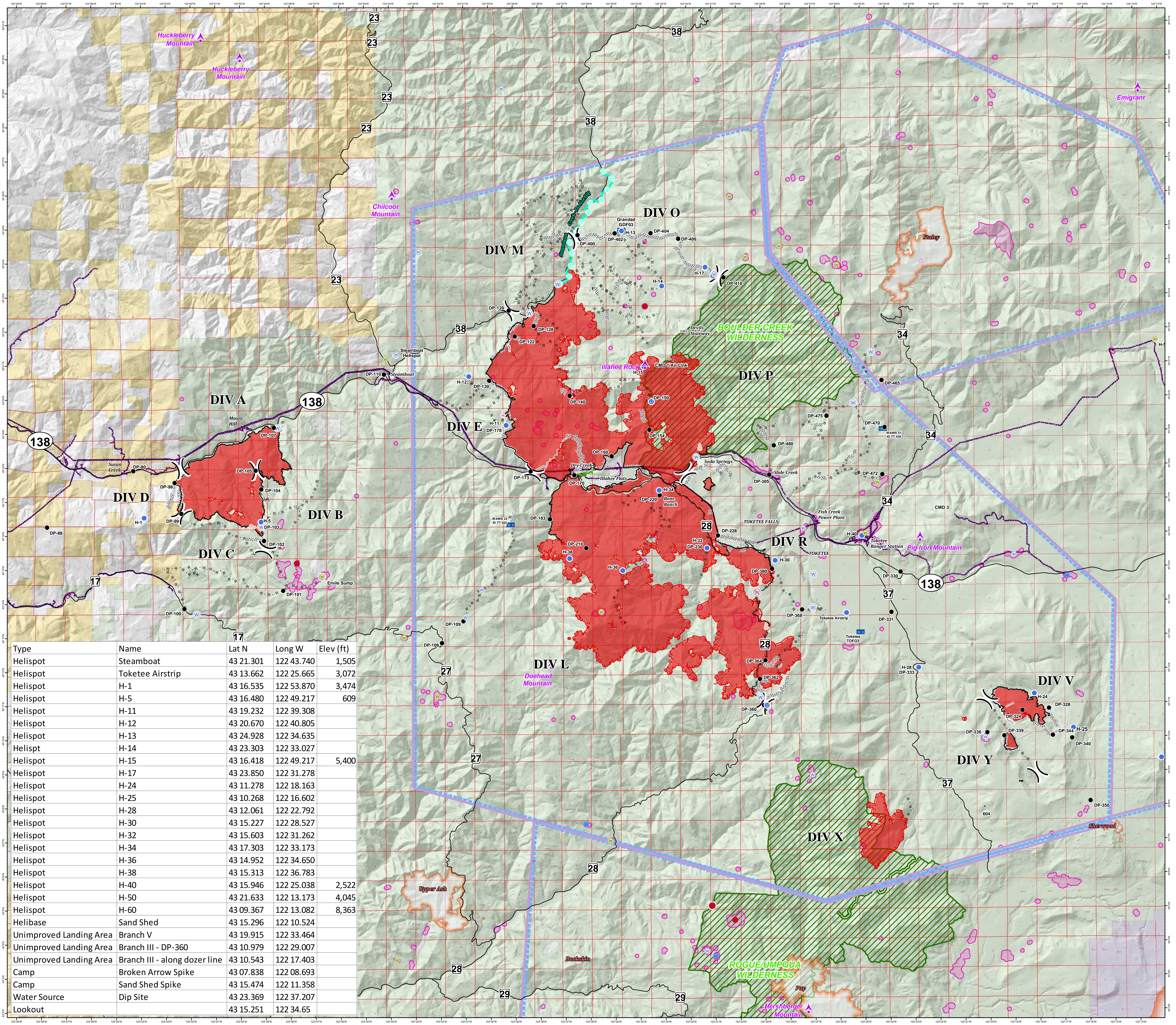
Umpqua North Complex

OR-UPF-000406
09/22/2017



- Drop Point
- Unimproved Landing Area
- Helispot
- ✈ Mobile Weather Unit
- Spot Fire
- W Water Source
- WR Restricted Water Source
-) (Division Break
- Do Not Use
- W Restricted
- W OK With Consult
- W OK

- Uncontrolled Fire Edge
- Completed Line
- XXXXXXXXXXXX Completed Dozer Line
- Completed Hand Line
- R - R - R - R - R Road as Completed Line
- Escape Route
- - - Proposed Handline
- Wildfire Daily Fire Perimeter
- Powerline
- Steamboat Creek - Do Not Dip
- TFR
- Aerial Fire Retardant Avoidance Area
- Wilderness
- Bureau of Land Management
- National Park Service
- Private
- United States Forest Service



Type	Name	Lat N	Long W	Elev (ft)
Helispot	Steamboat	43 21.301	122 43.740	1,505
Helispot	Toketee Airstrip	43 13.662	122 25.665	3,072
Helispot	H-1	43 16.535	122 53.870	3,474
Helispot	H-5	43 16.480	122 49.217	609
Helispot	H-11	43 19.232	122 39.308	
Helispot	H-12	43 20.670	122 40.805	
Helispot	H-13	43 24.928	122 34.635	
Helispot	H-14	43 23.303	122 33.027	
Helispot	H-15	43 16.418	122 49.217	5,400
Helispot	H-17	43 23.850	122 31.278	
Helispot	H-24	43 11.278	122 18.163	
Helispot	H-25	43 10.268	122 16.602	
Helispot	H-28	43 12.061	122 22.792	
Helispot	H-30	43 15.227	122 28.527	
Helispot	H-32	43 15.603	122 31.262	
Helispot	H-34	43 17.303	122 33.173	
Helispot	H-36	43 14.952	122 34.650	
Helispot	H-38	43 15.313	122 36.783	
Helispot	H-40	43 15.946	122 25.038	2,522
Helispot	H-50	43 21.633	122 13.173	4,045
Helispot	H-60	43 09.367	122 13.082	8,363
Helibase	Sand Shed	43 15.296	122 10.524	
Unimproved Landing Area	Branch V	43 19.915	122 33.464	
Unimproved Landing Area	Branch III - DP-360	43 10.979	122 29.007	
Unimproved Landing Area	Branch III - along dozer line	43 10.543	122 17.403	
Camp	Broken Arrow Spike	43 07.838	122 08.693	
Camp	Sand Shed Spike	43 15.474	122 11.358	
Water Source	Dip Site	43 23.369	122 37.207	
Lookout		43 15.251	122 34.65	

