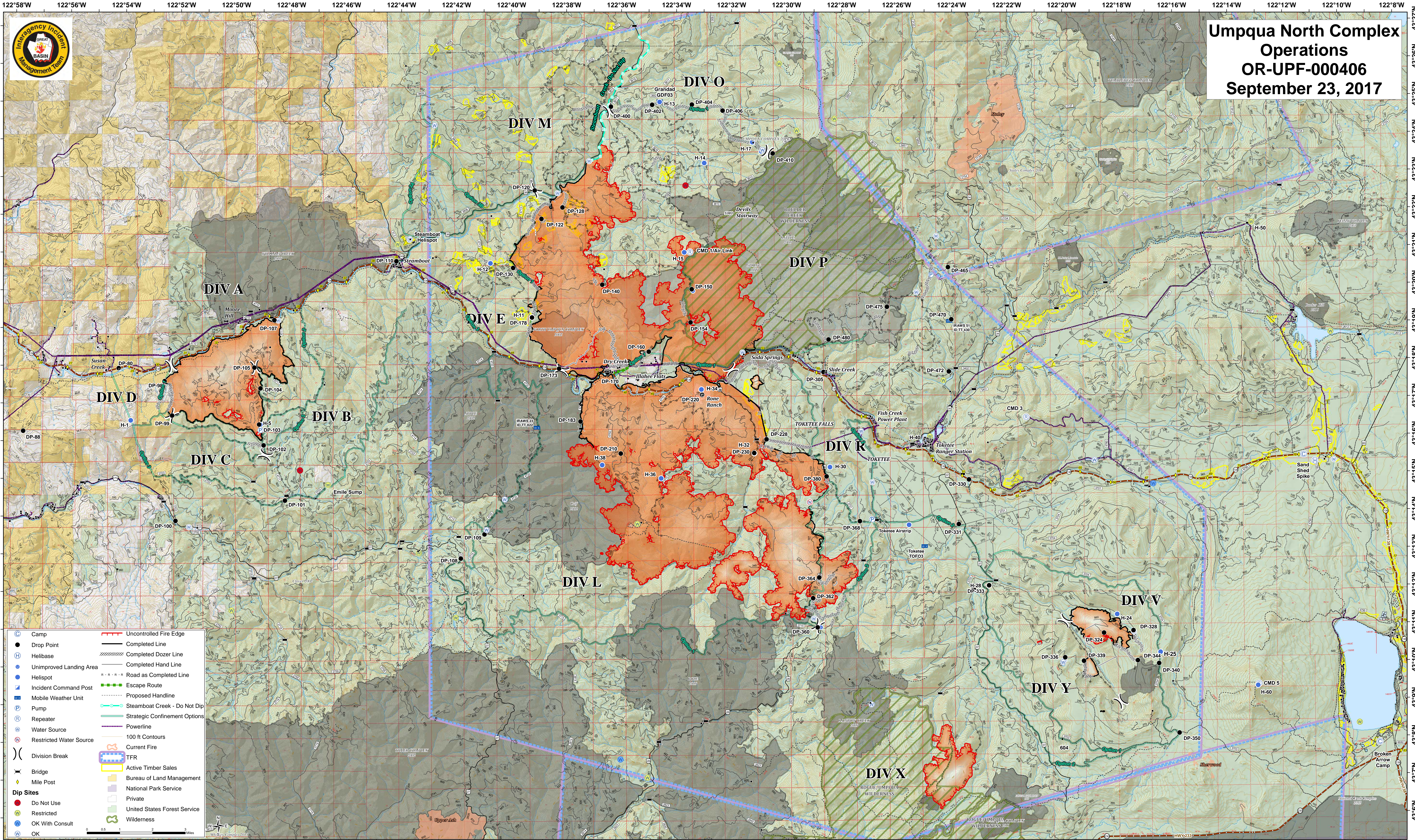




# Umpqua North Complex Operations

## OR-UPF-000406

### September 23, 2017



	Camp		Uncontrolled Fire Edge
	Drop Point		Completed Line
	Helibase		Completed Dozer Line
	Unimproved Landing Area		Completed Hand Line
	Helispot		Road as Completed Line
	Incident Command Post		Escape Route
	Mobile Weather Unit		Proposed Handline
	Pump		Steamboat Creek - Do Not Dip
	Repeater		Strategic Confinement Options
	Water Source		Powerline
	Restricted Water Source		100 ft Contours
	Division Break		Current Fire
	Bridge		TFR
	Mile Post		Active Timber Sales
	Dip Sites		Bureau of Land Management
	Do Not Use		National Park Service
	Restricted		Private
	OK With Consult		United States Forest Service
	OK		Wilderness

122°58'W 122°56'W 122°54'W 122°52'W 122°50'W 122°48'W 122°46'W 122°44'W 122°42'W 122°40'W 122°38'W 122°36'W 122°34'W 122°32'W 122°30'W 122°28'W 122°26'W 122°24'W 122°22'W 122°20'W 122°18'W 122°16'W 122°14'W 122°12'W 122°10'W 122°8'W