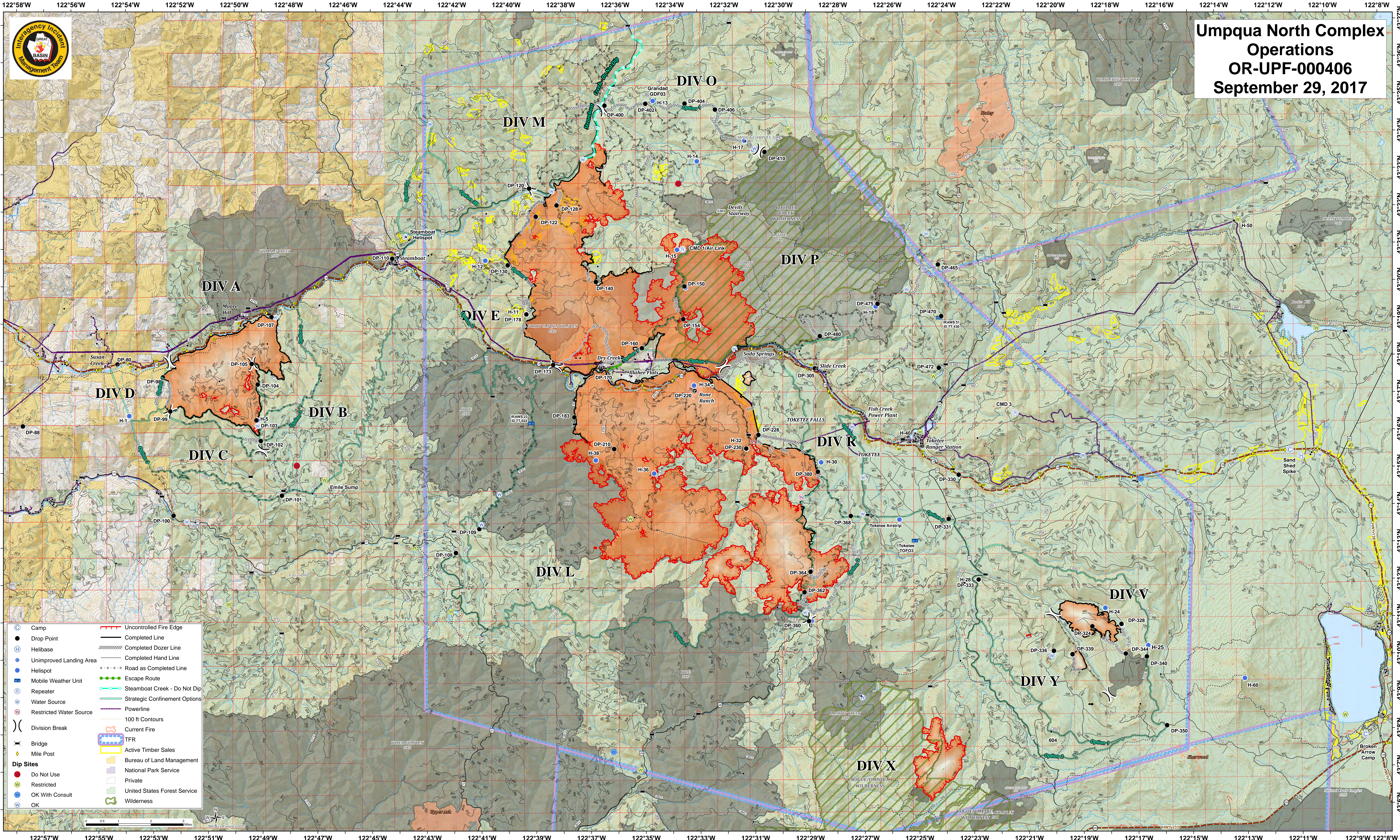




# Umpqua North Complex Operations

## OR-UPF-000406

### September 29, 2017



	Camp		Uncontrolled Fire Edge
	Drop Point		Completed Line
	Helibase		Completed Dozer Line
	Unimproved Landing Area		Completed Hand Line
	Helispot		Road as Completed Line
	Mobile Weather Unit		Escape Route
	Repeater		Steamboat Creek - Do Not Dip
	Water Source		Strategic Confinement Options
	Restricted Water Source		Powerline
	Division Break		100 ft Contours
	Bridge		Current Fire
	Mile Post		TFR
	Dip Sites		Active Timber Sales
	Do Not Use		Bureau of Land Management
	Restricted		National Park Service
	OK With Consult		Private
	OK		United States Forest Service
			Wilderness

Map coordinates: 122°58'W to 122°8'W (Longitude) and 43°27'N to 43°6'N (Latitude)