

**Umpqua North
Complex
OR-UPF-000406
9/9/2017
Structures**

- Structure
- - - Powerline
- - - Trails
- Roads

**ZONE
1**

LOCATION
TOKETEE RANGER STATION

LOCATION
Hwy 138 @ Mile Marker 61

EVACUATION ZONE
Mile Marker **58.5** to Mile Marker **61**
Toketee Ranger Station

RESIDENCE
14

COMMERCIAL BUILDINGS
11

TOTAL STRUCTURES
25

SUPPLIES NEEDED
YES

PORTABLE PUMPS
2

WATER TANKS
2 - 1800 Gal **0** - 3000Gal

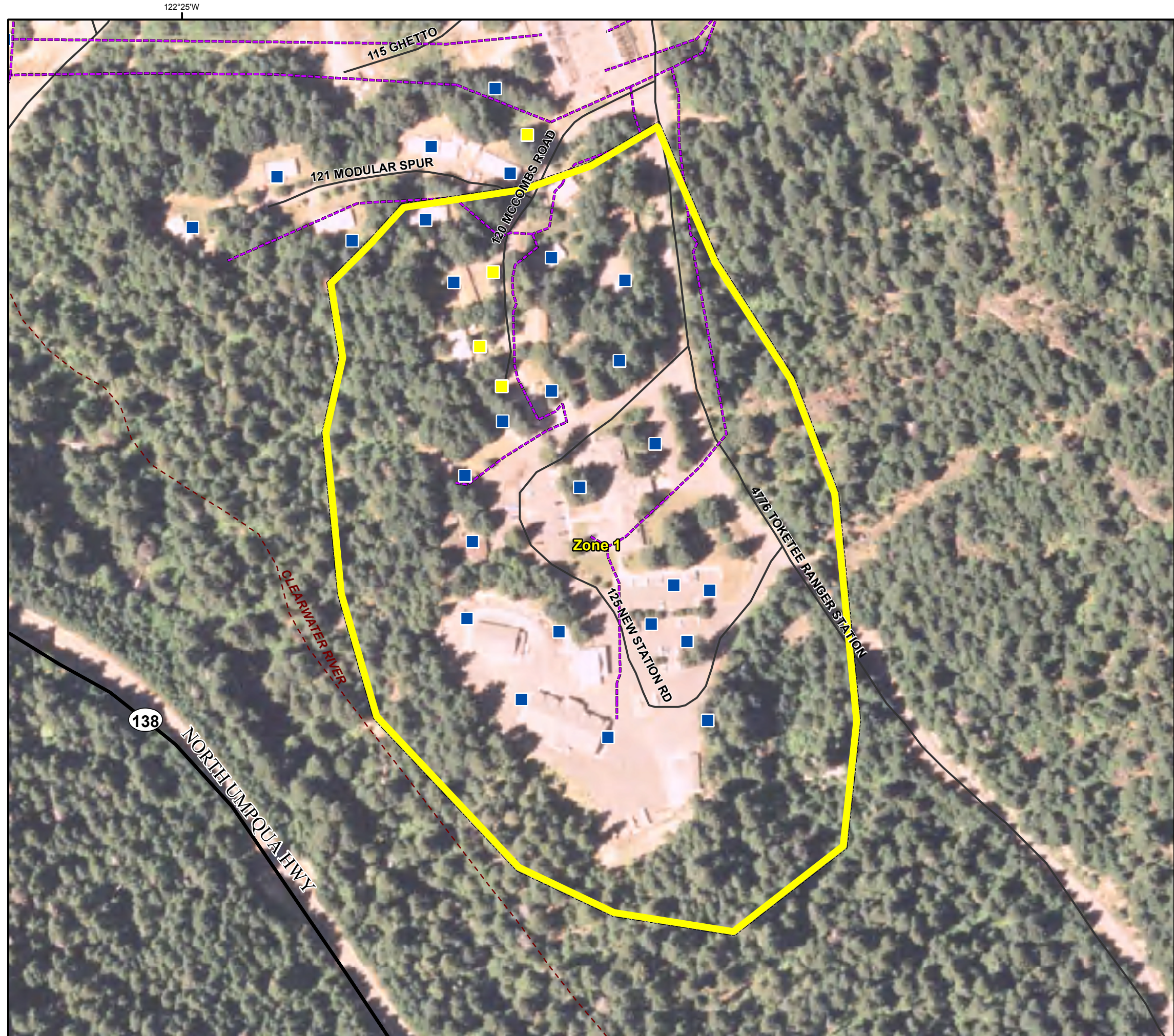
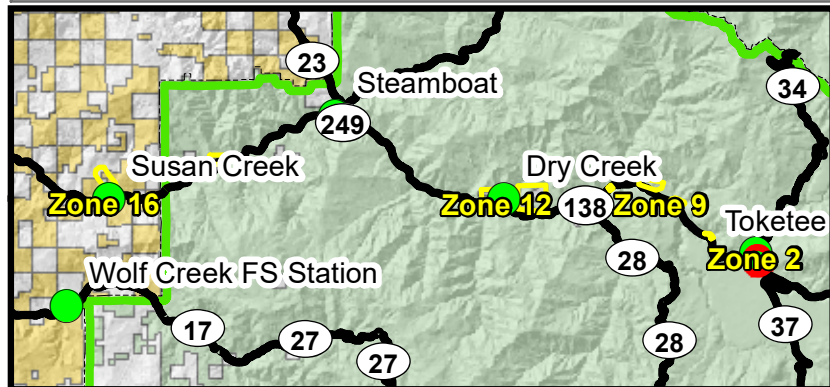
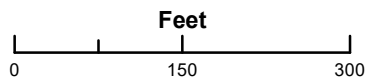
SPRINKLER KITS
3

HOSE
500 - 1 1/2 inch (NH) **0** - 1 inch (NPSH) **500** - 3/4 inch (NH)

APPLIANCES
GATED WYE
2 - 1 1/2 inch (NH) **0** - 1 inch (NPSH) **5** - 3/4 inch (NH)

REDUCER
1 1/2 inch (NH) TO 1 inch (NPSH)
5

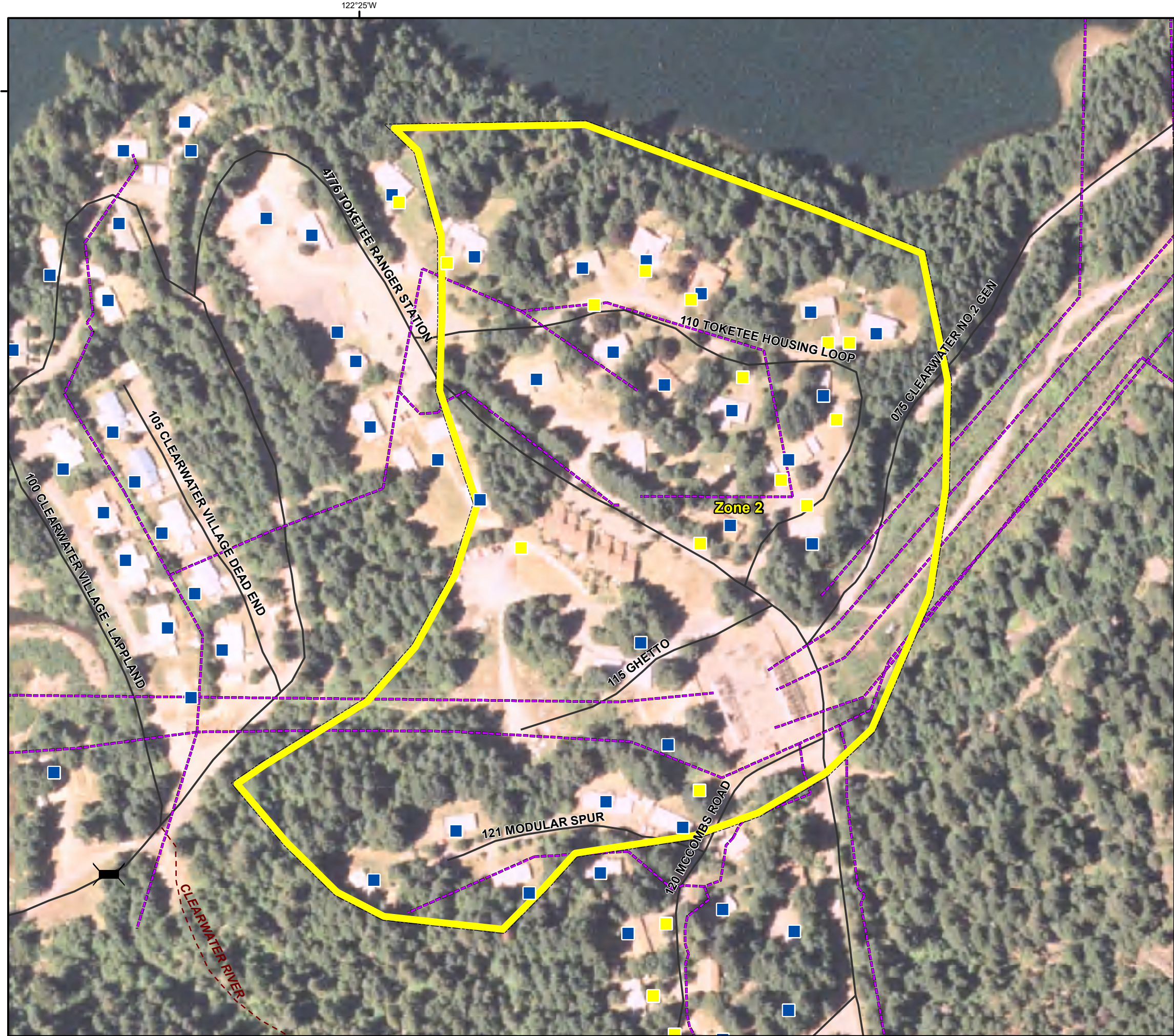
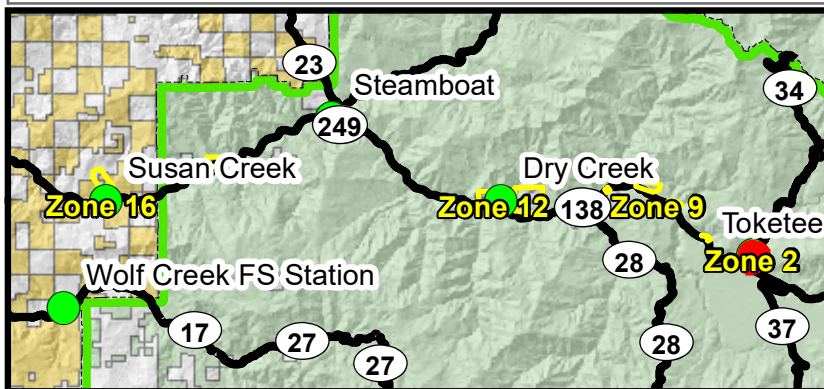
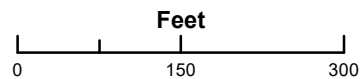
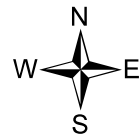
1 inch (NPSH) TO 3/4 INCH (NH)
5



Umpqua North Complex
OR-UPF-000406
9/9/2017
Structures

- Structure
- Bridges
- Powerline
- Trails

ZONE 2
LOCATION TOKETEE RANGER STATION
LOCATION Hwy 138 @ Mile Marker 61
EVACUATION ZONE Mile Marker 58.5 to Mile Marker 61 Toketee Ranger Station
RESIDENCE 23
COMMERCIAL BUILDINGS 0
TOTAL STRUCTURES 23
SUPPLIES NEEDED YES
PORTABLE PUMPS 2
WATER TANKS 0 - 1800 Gal 2 - 3000Gal
SPRINKLER KITS 5
HOSE 1000 - 1 1/2 inch (NH) 0 - 1 inch (NPSH) 1000 - 3/4 inch (NH)
APPLIANCES GATED WYE 5 - 1 1/2 inch (NH) 0 - 1 inch (NPSH) 10 - 3/4 inch (NH)
REDUCER 1 1/2 inch (NH) TO 1 inch (NPSH) 5
1 inch (NPSH) TO 3/4 INCH (NH) 5



**Umpqua North
Complex
OR-UPF-000406
9/9/2017
Structures**

- Structure
- Bridges
- Powerline
- Trails
- Roads

**ZONE
3**

LOCATION
TOKETEE RANGER STATION

LOCATION
Hwy 138 @ Mile Marker 61

EVACUATION ZONE
Mile Marker **58.5** to Mile Marker **61**
Toketee Ranger Station

RESIDENCE
15

COMMERCIAL BUILDINGS
11

TOTAL STRUCTURES
26

SUPPLIES NEEDED
YES

PORTABLE PUMPS
2

WATER TANKS
0 - 1800 Gal **2** - 3000Gal

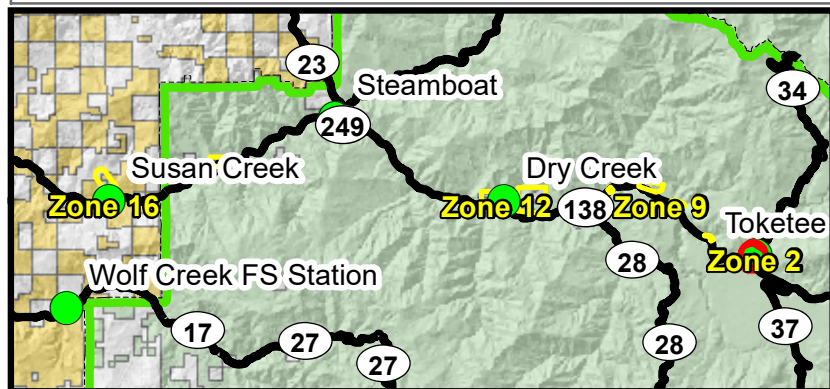
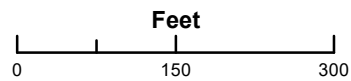
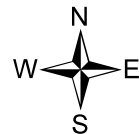
SPRINKLER KITS
7

HOSE
1000 - 1 1/2 inch (NH) **1009** 1 inch (NPSH) **1000** - 3/4 inch (NH)

APPLIANCES
GATED WYE
5 - 1 1/2 inch (NH) **0** - 1 inch (NPSH) **10** - 3/4 inch (NH)

REDUCER
1 1/2 inch (NH) TO 1 inch (NPSH)
5

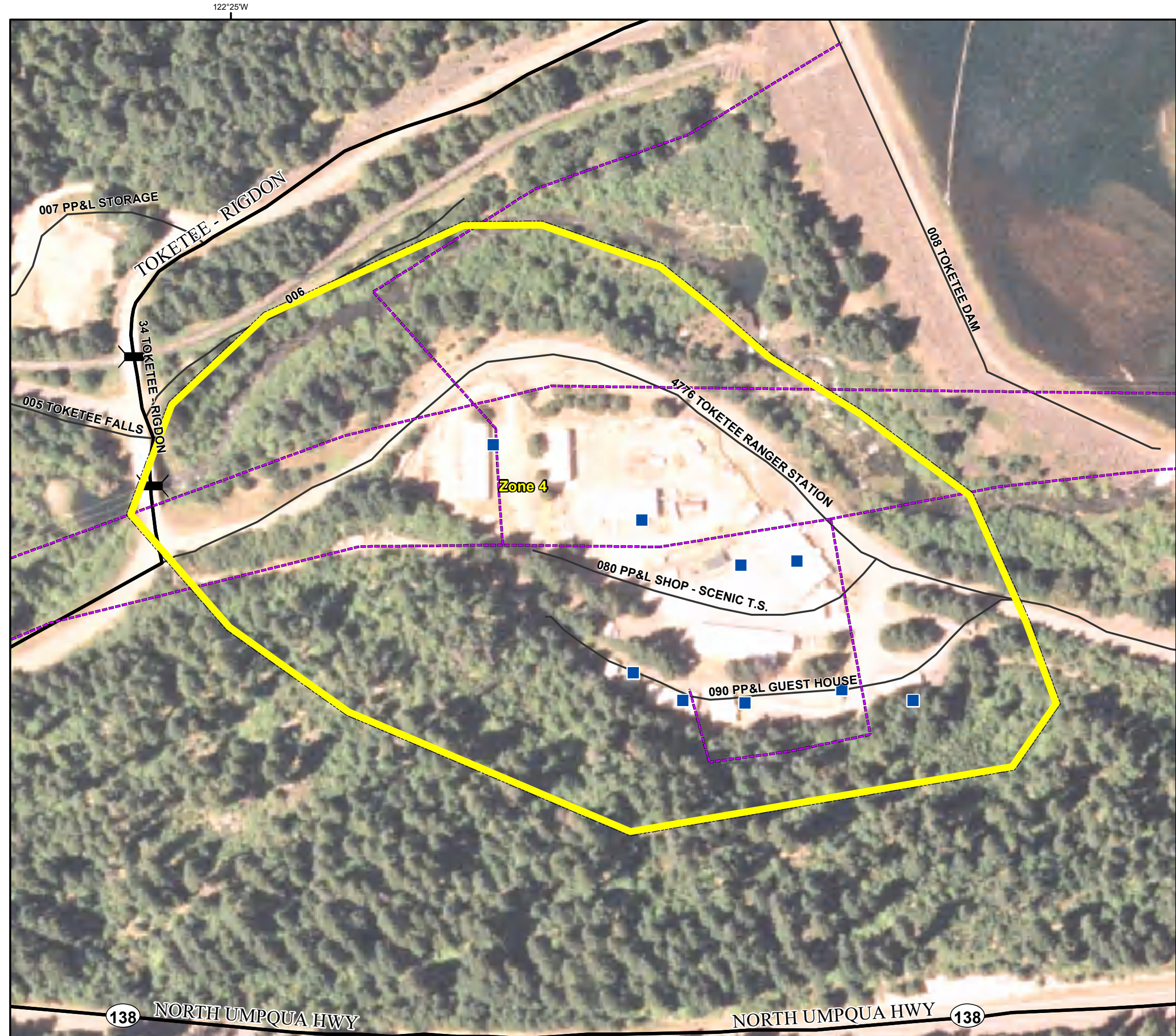
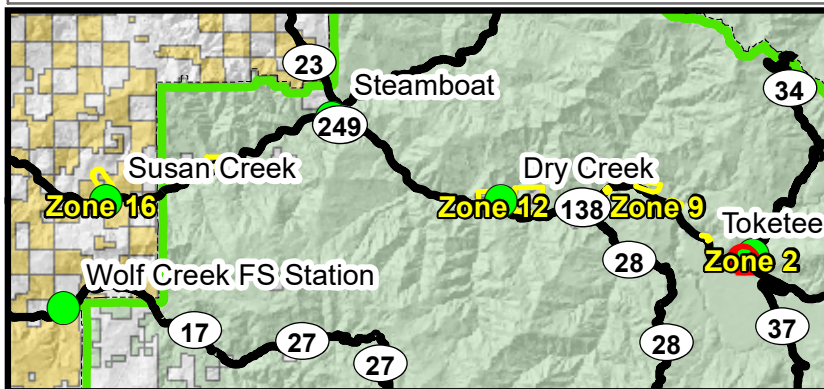
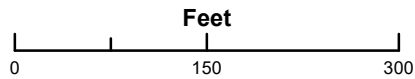
1 inch (NPSH) TO 3/4 INCH (NH)
5



**Umpqua North
Complex
OR-UPF-000406
9/9/2017
Structures**

- Structure
- Bridges
- Powerline
- Roads

ZONE 4
LOCATION TOKETEE RANGER STATION
LOCATION Hwy 138 @ Mile Marker 61
EVACUATION ZONE Mile Marker 58.5 to Mile Marker 61 Toketee Ranger Station
RESIDENCE 1
COMMERCIAL BUILDINGS 8
TOTAL STRUCTURES 9
SUPPLIES NEEDED YES
PORTABLE PUMPS 1
WATER TANKS 0 - 1800 Gal 1 - 3000Gal
SPRINKLER KITS 2
HOSE 500 - 1 1/2 inch (NH) 0 - 1 inch (NPSH) 200 - 3/4 inch (NH)
APPLIANCES GATED WYE 2 - 1 1/2 inch (NH) 0 - 1 inch (NPSH) 3 - 3/4 inch (NH)
REDUCER 1 1/2 inch (NH) TO 1 inch (NPSH) 2
1 inch (NPSH) TO 3/4 INCH (NH) 2



**Umpqua North
Complex
OR-UPF-000406
9/9/2017
Structures**

- Structure
- Powerline
- Roads

**ZONE
5**

LOCATION
TOKETEE CONTROL CENTER

LOCATION
Hwy 138 @ Mile Marker 57

EVACUATION ZONE
Mile Marker **56** to Mile Marker **58.5**
Toketee Village

RESIDENCE
0

COMMERCIAL BUILDINGS
1

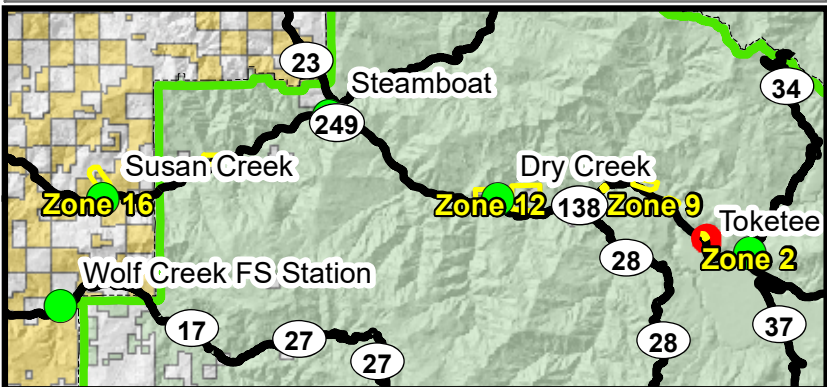
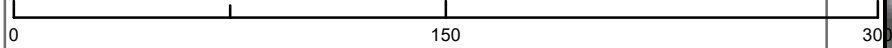
TOTAL STRUCTURES
1

SUPPLIES NEEDED
NONE

- PORTABLE PUMPS**
0
- WATER TANKS**
0 - 1800 Gal 0 - 3000Gal
- SPRINKLER KITS**
0
- HOSE**
0 - 1 1/2 inch (NH) 0 - 1 inch (NPSH) 0 - 3/4 inch (NH)
- APPLIANCES**
GATED WYE
0 - 1 1/2 inch (NH) 0 - 1 inch (NPSH) 0 - 3/4 inch (NH)
- REDUCER**
1 1/2 inch (NH) TO 1 inch (NPSH)
0
1 inch (NPSH) TO 3/4 INCH (NH)
0



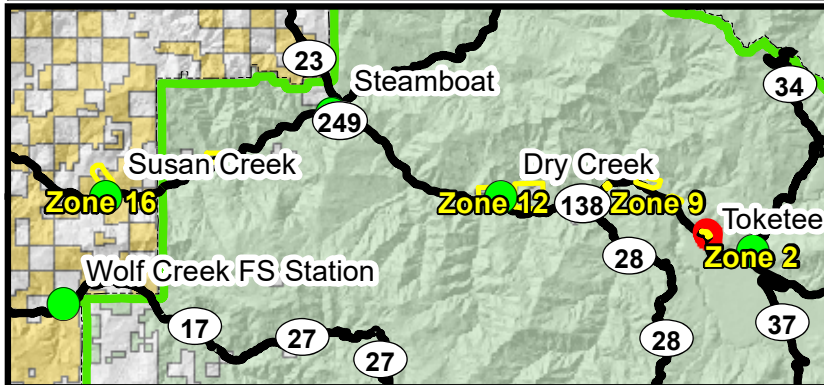
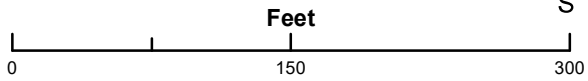
Feet



**Umpqua North
Complex
OR-UPF-000406
9/9/2017
Structures**

- Structure
- - - Powerline
- Roads

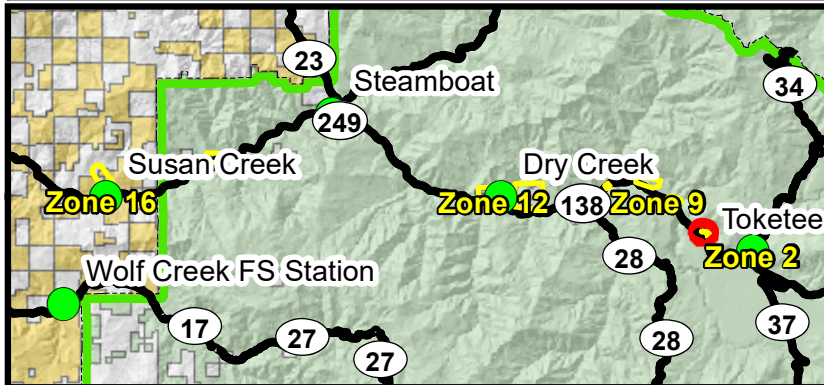
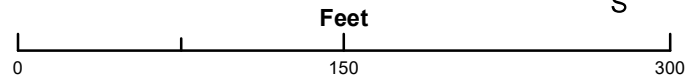
ZONE 6
LOCATION TOKETEE CONTROL CENTER
LOCATION Hwy 138 @ Mile Marker 57
EVACUATION ZONE Mile Marker 56 to Mile Marker 58.5 Toketee Village
RESIDENCE 0
COMMERCIAL BUILDINGS 11
TOTAL STRUCTURES 11
SUPPLIES NEEDED NONE
PORTABLE PUMPS 0
WATER TANKS 0 - 1800 Gal 0 - 3000Gal
SPRINKLER KITS 0
HOSE 0 - 1 1/2 inch (NH) 0 - 1 inch (NPSH) 0 - 3/4 inch (NH)
APPLIANCES GATED WYE 0 - 1 1/2 inch (NH) 0 - 1 inch (NPSH) 0 - 3/4 inch (NH)
REDUCER 1 1/2 inch (NH) TO 1 inch (NPSH) 0
1 inch (NPSH) TO 3/4 INCH (NH) 0



**Umpqua North
Complex
OR-UPF-000406
9/9/2017
Structures**

- Structure
- - - Powerline
- Roads

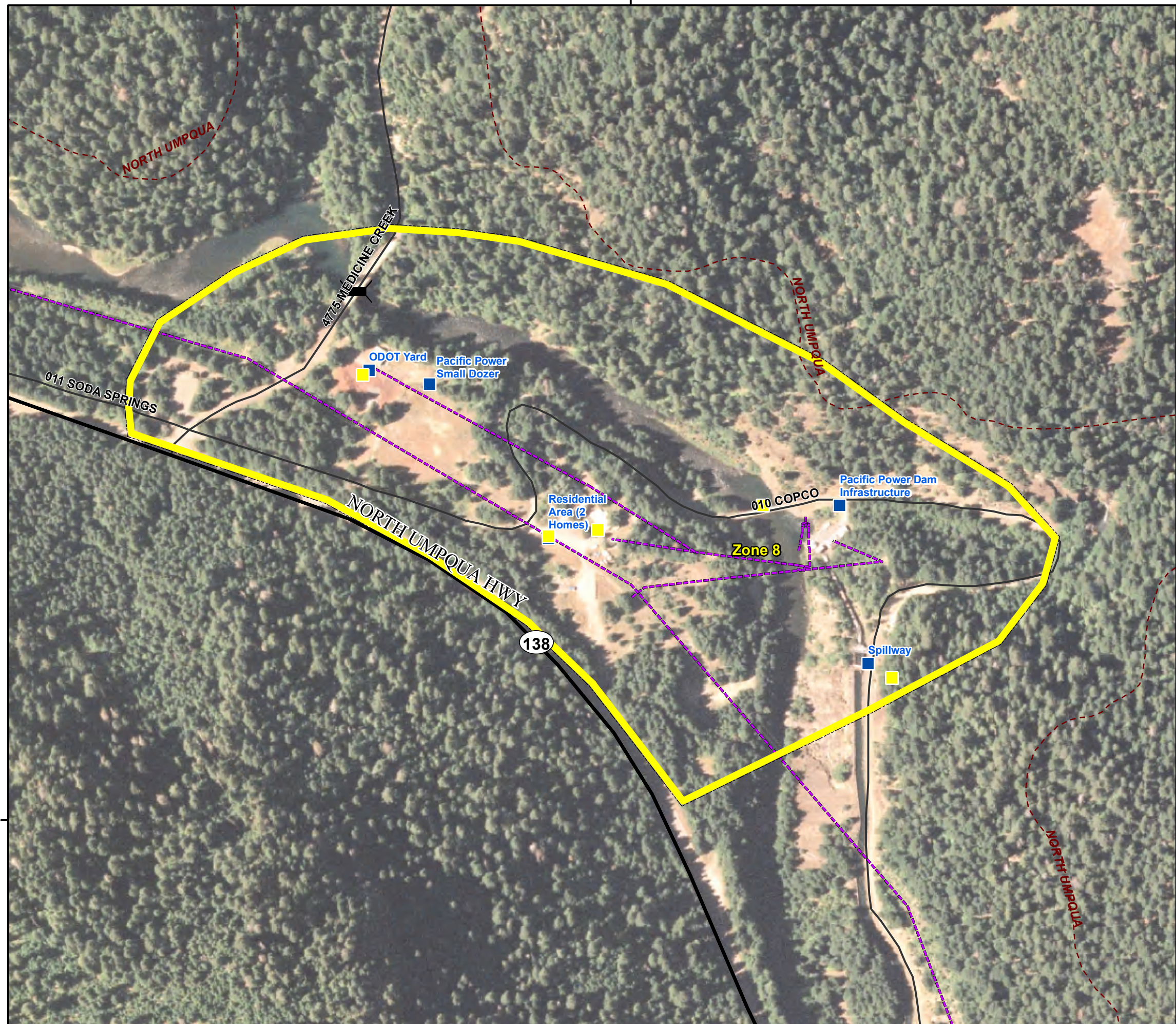
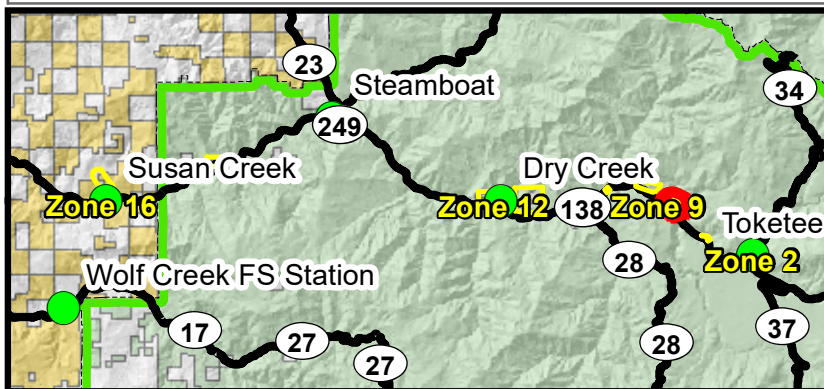
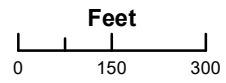
ZONE 7
LOCATION TOKETEE CONTROL CENTER
LOCATION Hwy 138 @ Mile Marker 57
EVACUATION ZONE Mile Marker 56 to Mile Marker 58.5 Toketee Village
RESIDENCE 6
COMMERCIAL BUILDINGS 0
TOTAL STRUCTURES 6
SUPPLIES NEEDED YES
PORTABLE PUMPS 0
WATER TANKS 0 - 1800 Gal 0 - 3000Gal Use Local Hydrants
SPRINKLER KITS 2
HOSE 200 - 1 1/2 inch (NH) 0 - 1 inch (NPSH) 300 - 3/4 inch (NH)
APPLIANCES GATED WYE 0 - 1 1/2 inch (NH) 0 - 1 inch (NPSH) 3 - 3/4 inch (NH)
REDUCER 1 1/2 inch (NH) TO 1 inch (NPSH) 2
1 inch (NPSH) TO 3/4 INCH (NH) 2









Umpqua North Complex
OR-UPF-000406
9/9/2017
Structures

- Structure
- Bridges
- - - Powerline
- - - Trails
- Roads

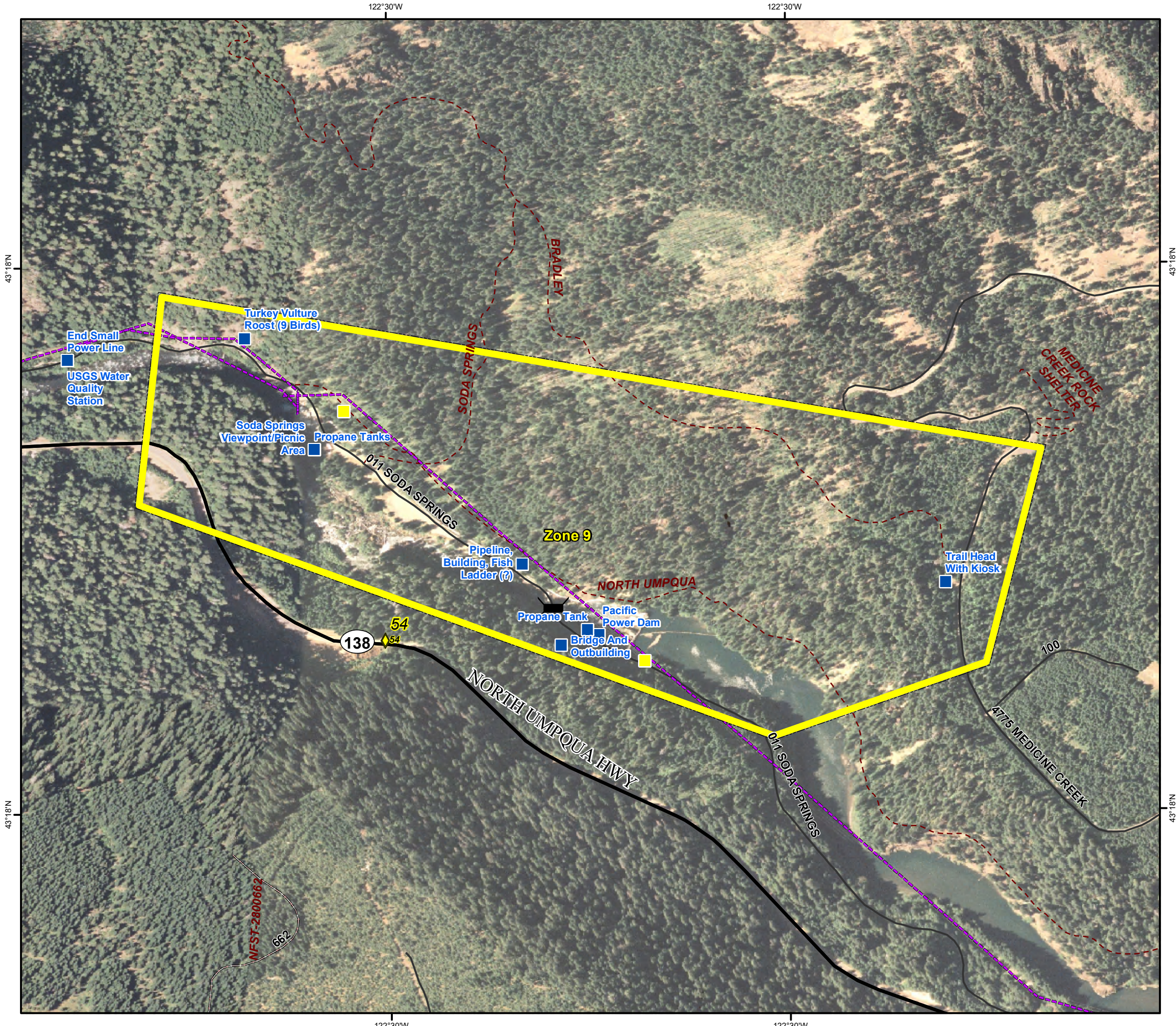
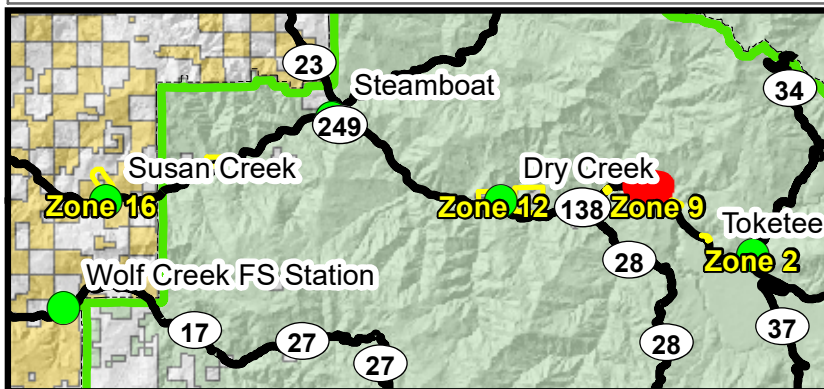
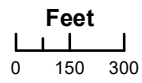
ZONE
8
LOCATION SLIDE CREEK
LOCATION Hwy 138 @ Medicine Creek Road
EVACUATION ZONE Mile Marker 53 to Mile Marker 56 Slide Creek
RESIDENCE 2
COMMERCIAL BUILDINGS 2
TOTAL STRUCTURES 4
SUPPLIES NEEDED YES
PORTABLE PUMPS 1
WATER TANKS 1 - 1800 Gal 0 - 3000Gal
SPRINKLER KITS 4
HOSE 500 - 1 1/2 inch (NH) 300 - 1 inch (NPSH) 500 - 3/4 inch (NH)
APPLIANCES GATED WYE 2 - 1 1/2 inch (NH) 2 - 1 inch (NPSH) 10 - 3/4 inch (NH)
REDUCER 1 1/2 inch (NH) TO 1 inch (NPSH) 5
1 inch (NPSH) TO 3/4 INCH (NH) 5



Umpqua North Complex
OR-UPF-000406
9/9/2017
Structures

-  Mile Post
-  Structure
-  Bridges
-  Powerline
-  Trails
-  Roads

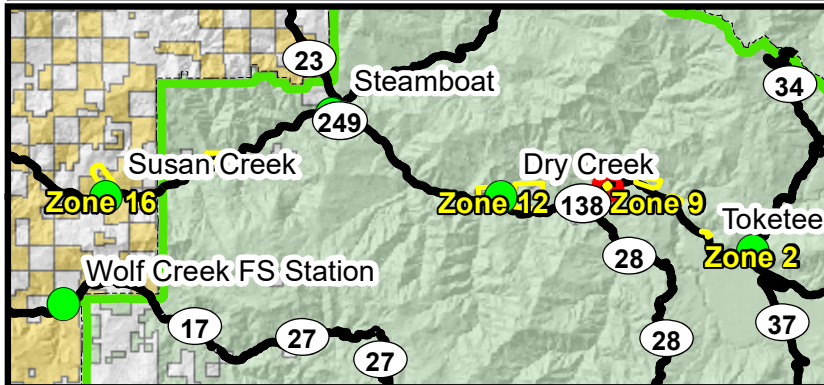
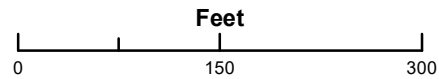
ZONE
9
LOCATION SODA SPRINGS
LOCATION Hwy 138 @ Medicine Creek Road Take First Left Turn, West Parallel River
EVACUATION ZONE Mile Marker 53 to Mile Marker 56 Slide Creek
RESIDENCE 0
COMMERCIAL BUILDINGS 5
TOTAL STRUCTURES 5
SUPPLIES NEEDED NONE
PORTABLE PUMPS 0
WATER TANKS 0 - 1800 Gal 0 - 3000Gal
SPRINKLER KITS 0
HOSE 0 - 1 1/2 inch (NH) 0 - 1 inch (NPSH) 0 - 3/4 inch (NH)
APPLIANCES GATED WYE 0 - 1 1/2 inch (NH) 0 - 1 inch (NPSH) 0 - 3/4 inch (NH)
REDUCER 1 1/2 inch (NH) TO 1 inch (NPSH) 0 1 inch (NPSH) TO 3/4 INCH (NH) 0



**Umpqua North
Complex
OR-UPF-000406
9/9/2017
Structures**

- Structure
- - - Powerline
- - - Trails
- Roads

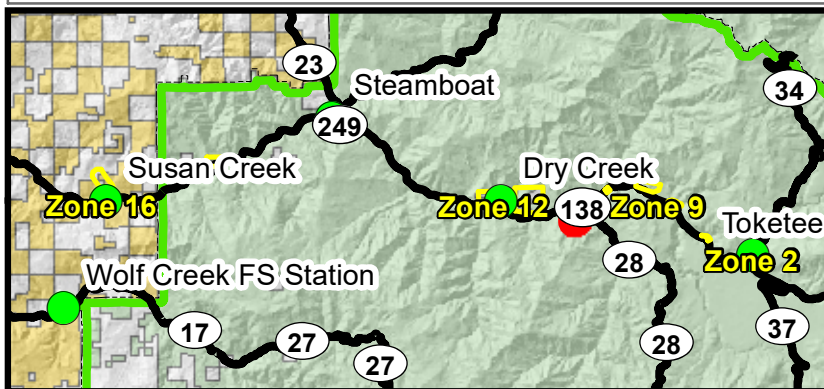
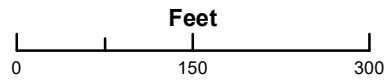
ZONE 10
LOCATION BOULDER FLAT CAMPGROUND
LOCATION Hwy 138 @ Mile Marker 52.5
EVACUATION ZONE Mile Marker 44 to Mile Marker 53 Dry Creek
RESIDENCE 0
COMMERCIAL BUILDINGS 2
TOTAL STRUCTURES 2
SUPPLIES NEEDED NONE
PORTABLE PUMPS 0
WATER TANKS 0 - 1800 Gal 0 - 3000Gal
SPRINKLER KITS 0
HOSE 0 - 1 1/2 inch (NH) 0 - 1 inch (NPSH) 0 - 3/4 inch (NH)
APPLIANCES GATED WYE 0 - 1 1/2 inch (NH) 0 - 1 inch (NPSH) 0 - 3/4 inch (NH)
REDUCER 1 1/2 inch (NH) TO 1 inch (NPSH) 0
1 inch (NPSH) TO 3/4 INCH (NH) 0



**Umpqua North
Complex
OR-UPF-000406
9/9/2017
Structures**

■ Structure

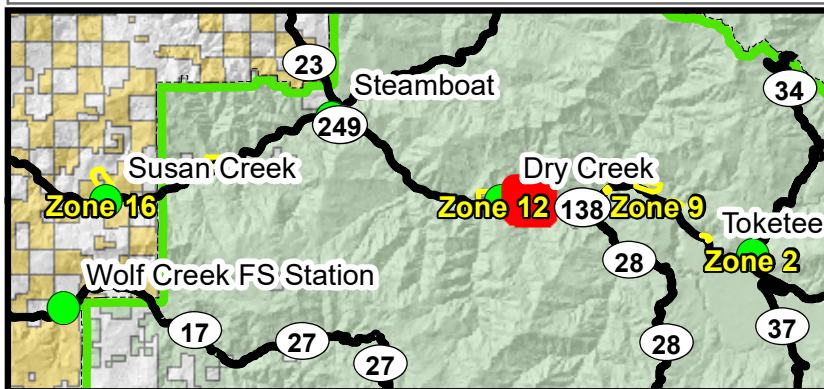
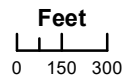
ZONE 11
LOCATION RONE RANCH
LOCATION Hwy 138 to 4770 Road
EVACUATION ZONE Mile Marker 44 to Mile Marker 53 Dry Creek
RESIDENCE 1
COMMERCIAL BUILDINGS 5
TOTAL STRUCTURES 6
SUPPLIES NEEDED YES
PORTABLE PUMPS 1
WATER TANKS 1 - 1800 Gal 1 - 3000Gal
SPRINKLER KITS 4
HOSE 200 - 1 1/2 inch (NH) 0 - 1 inch (NPSH) 350 - 3/4 inch (NH)
APPLIANCES GATED WYE 3 - 1 1/2 inch (NH) 0 - 1 inch (NPSH) 10 - 3/4 inch (NH)
REDUCER 1 1/2 inch (NH) TO 1 inch (NPSH) 5
1 inch (NPSH) TO 3/4 INCH (NH) 5



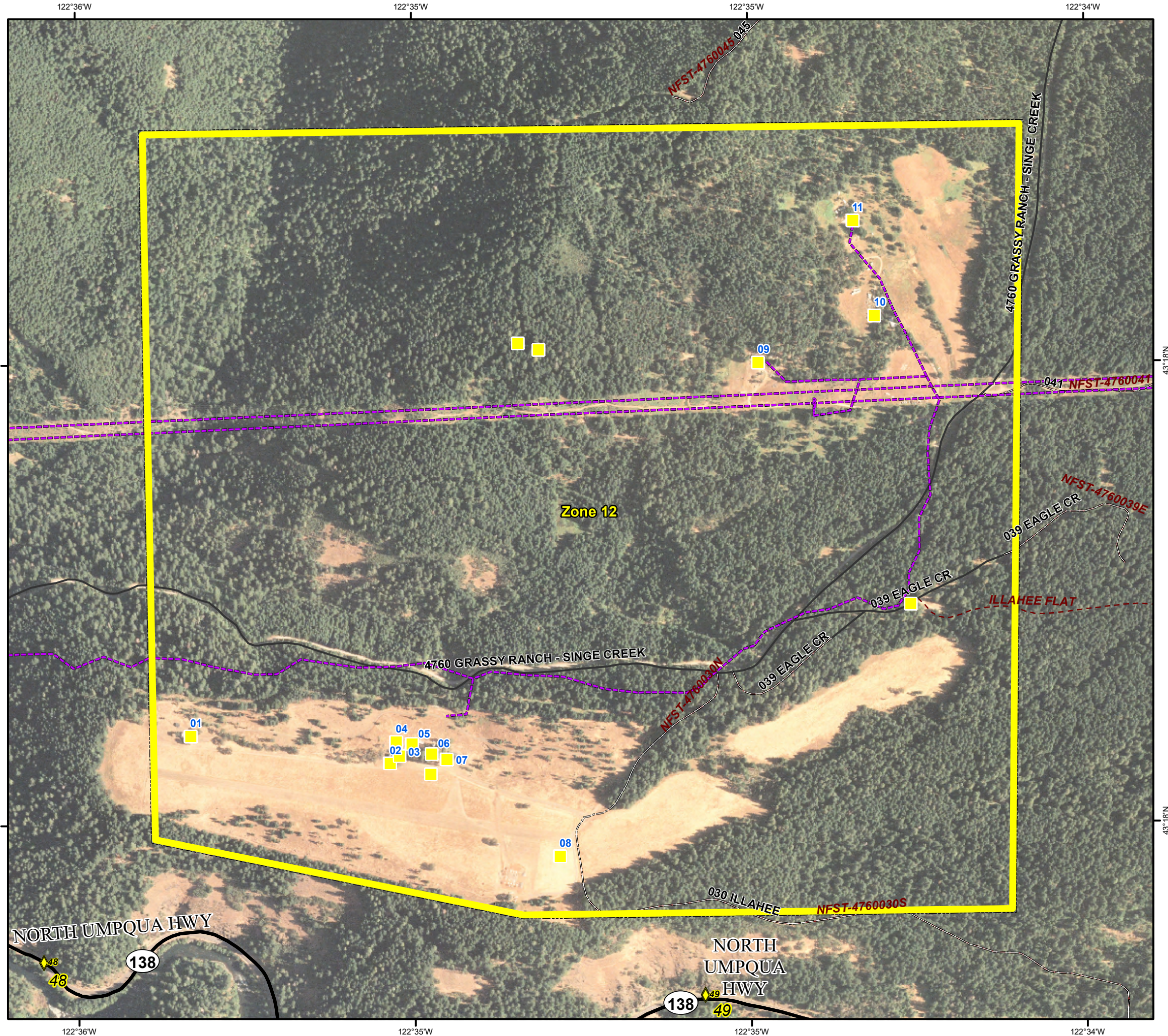
Umpqua North Complex
OR-UPF-000406
9/9/2017
Structures

- ◆ Mile Post
- Structure
- Powerline
- Trails
- Roads







ZONE 12
LOCATION ILLAHEE FLATS
LOCATION Hwy 138 @ Illahee Flats Road (4760 Road)
EVACUATION ZONE Mile Marker 44 to Mile Marker 53 Dry Creek
RESIDENCE 11
COMMERCIAL BUILDINGS 0
TOTAL STRUCTURES 11
SUPPLIES NEEDED YES
PORTABLE PUMPS 2
WATER TANKS 0 - 1800 Gal 2 - 3000Gal
SPRINKLER KITS 5
HOSE 600 - 1 1/2 inch (NH) 300 1 inch (NPSH) 1800 - 3/4 inch (NH)
APPLIANCES GATED WYE 3 - 1 1/2 inch (NH) 0 - 1 inch (NPSH) 5 - 3/4 inch (NH)
REDUCER 1 1/2 inch (NH) TO 1 inch (NPSH) 5
1 inch (NPSH) TO 3/4 INCH (NH) 5



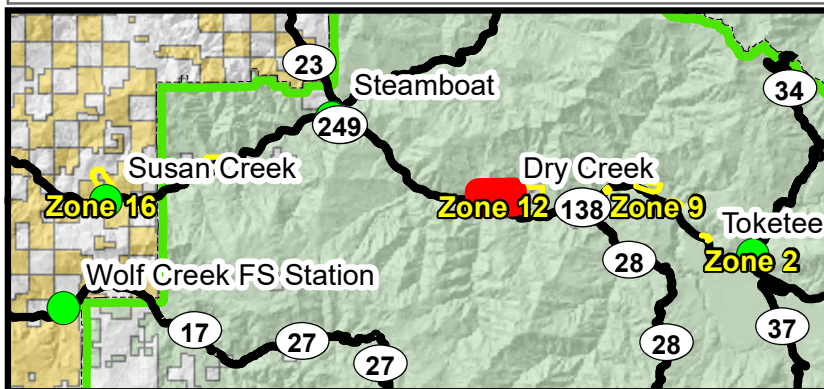
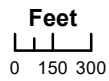
For Official Use Only on the Umpqua North Complex



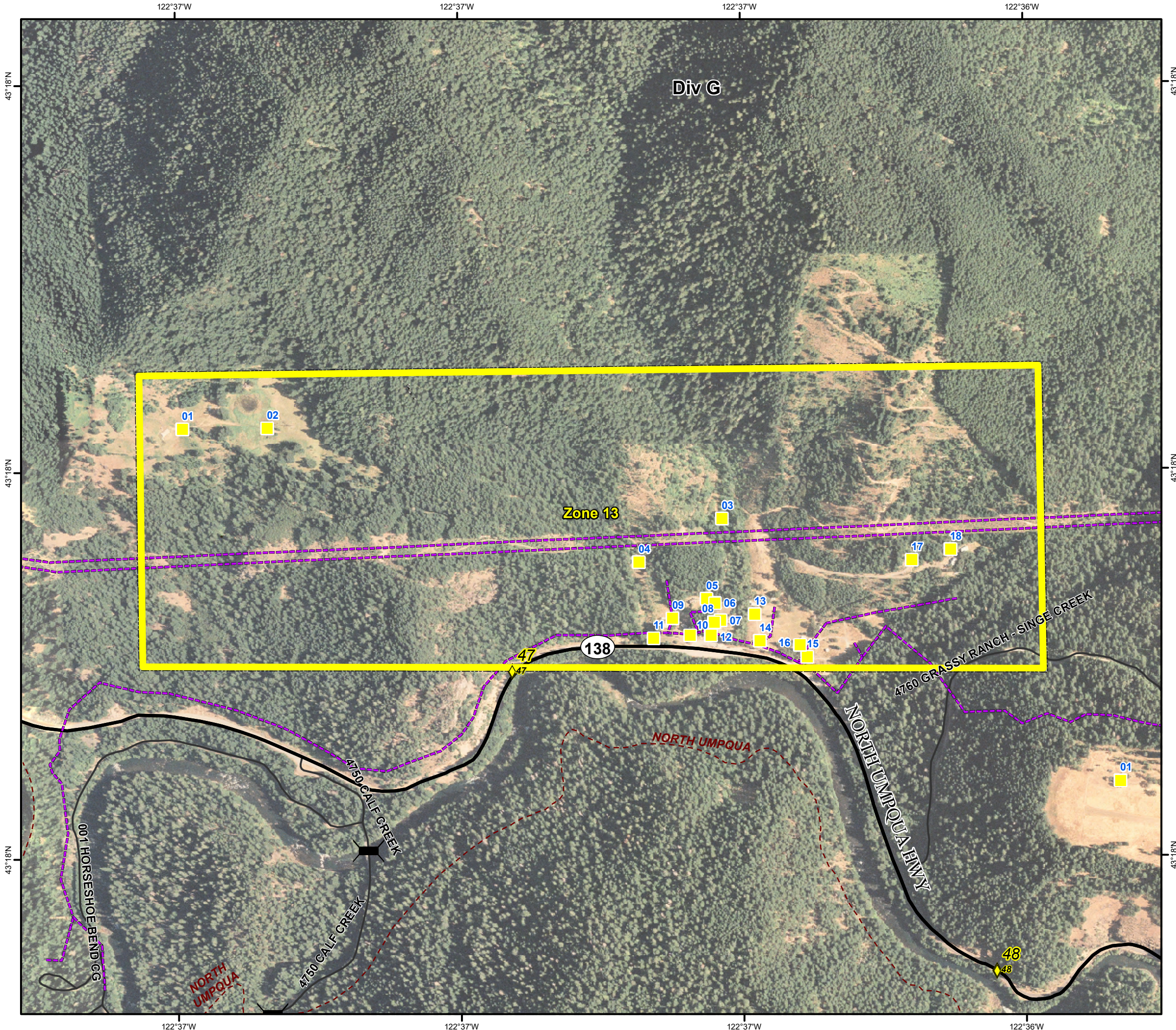
Umpqua North Complex
OR-UPF-000406
9/9/2017
Structures

-  Mile Post
-  Structure
-  Bridges
-  Powerline
-  Trails
-  Roads







ZONE 13
LOCATION DRY CREEK
LOCATION HWY 138 @ MILE MARKER 47
EVACUATION ZONE Mile Marker 44 to Mile Marker 53 Dry Creek
RESIDENCE 14
COMMERCIAL BUILDINGS 2
TOTAL STRUCTURES 16
SUPPLIES NEEDED YES
PORTABLE PUMPS 3
WATER TANKS 2 - 1800 Gal 1 - 3000Gal
SPRINKLER KITS 10
HOSE 6700 - 1 1/2 inch (NH) 4500 1 inch (NPSH) 700 - 3/4 inch (NH)
APPLIANCES GATED WYE 7 - 1 1/2 inch (NH) 7 - 1 inch (NPSH) 14 - 3/4 inch (NH)
REDUCER 1 1/2 inch (NH) TO 1 inch (NPSH) 10
1 inch (NPSH) TO 3/4 INCH (NH) 10



For Official Use Only on the Umpqua North Complex



Umpqua North Complex
OR-UPF-000406
9/9/2017
Structures

-  Mile Post
-  Structure
-  Bridges
-  Powerline
-  Trails
-  Roads

ZONE
14

LOCATION
STEAMBOAT STRUCTURES

LOCATION
HWY 138 @ MILE MARKER 39

EVACUATION ZONE
Mile Marker 37 to Mile Marker 41
 Steamboat

RESIDENCE
14

COMMERCIAL BUILDINGS
0

TOTAL STRUCTURES
14

SUPPLIES NEEDED
YES

PORTABLE PUMPS
1

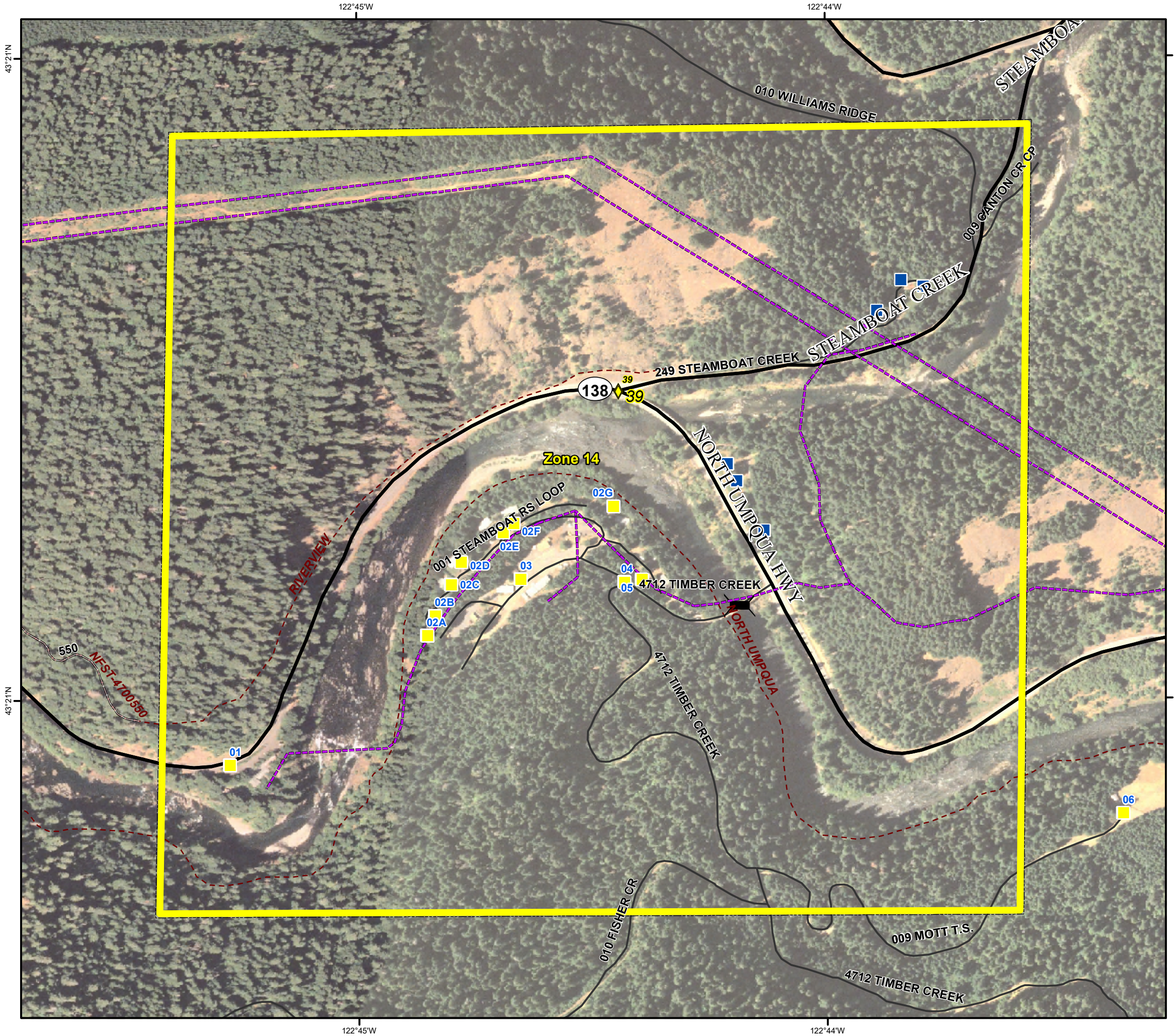
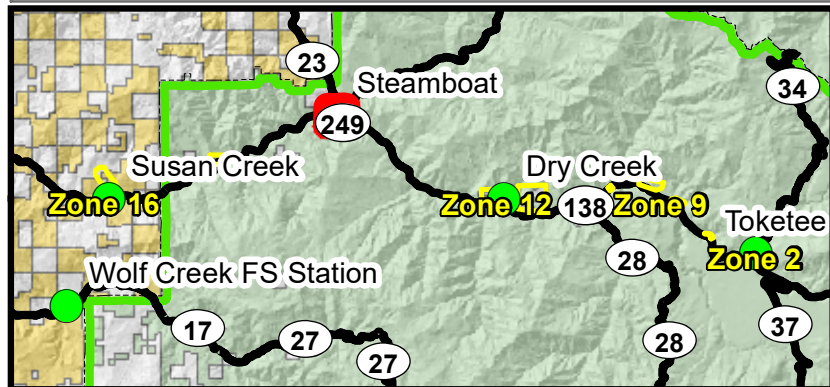
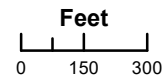
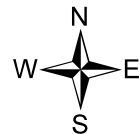
WATER TANKS
0 - 1800 Gal 1 - 3000Gal

SPRINKLER KITS
3







HOSE
800 - 1 1/2 inch (NH) 0 - 1 inch (NPSH) 300 - 3/4 inch (NH)

APPLIANCES
GATED WYE
3 - 1 1/2 inch (NH) 0 - 1 inch (NPSH) 6 - 3/4 inch (NH)

REDUCER
1 1/2 inch (NH) TO 1 inch (NPSH)
3
1 inch (NPSH) TO 3/4 INCH (NH)
3



**Umpqua North
Complex
OR-UPF-000406
9/9/2017
Structures**

-  Mile Post
-  Structure
-  Bridges
-  Powerline
-  Trails
-  Roads

**ZONE
15**

LOCATION
MOORE HILLS STRUCTURES

LOCATION
Hwy 138 @Mile Marker 33

EVACUATION ZONE
Mile Marker **31** to Mile Marker **35**
Moore Hill

RESIDENCE
6

COMMERCIAL BUILDINGS
0

TOTAL STRUCTURES
6

SUPPLIES NEEDED
YES

PORTABLE PUMPS
3

WATER TANKS
0 - 1800 Gal **3** - 3000Gal

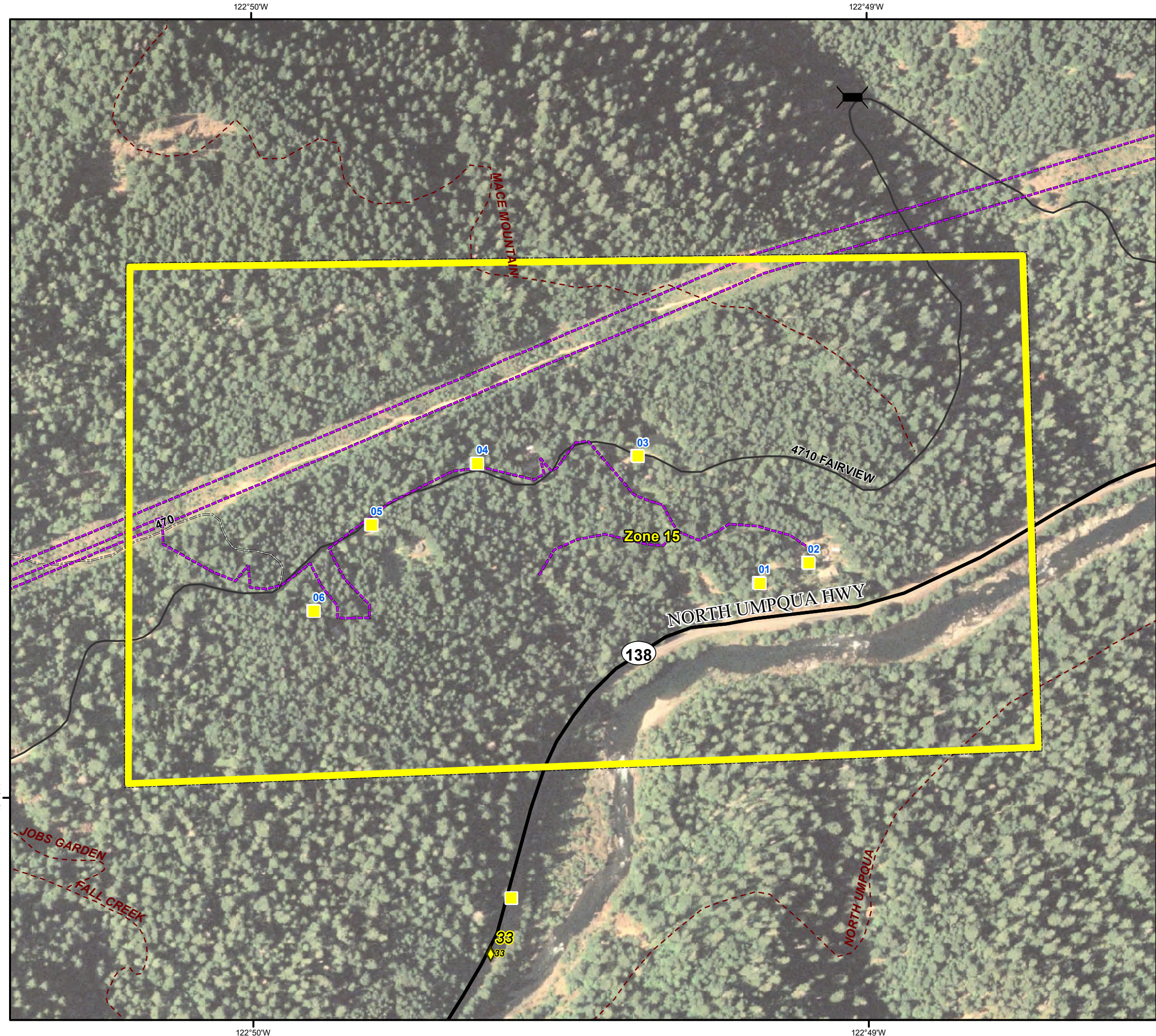
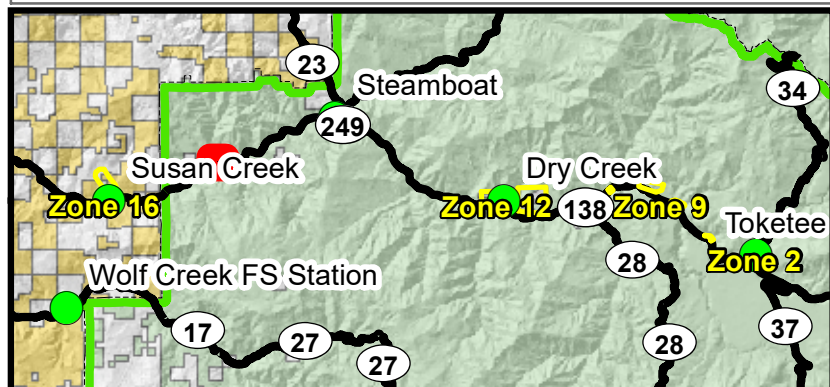
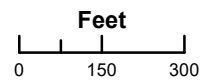
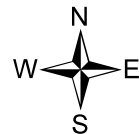
SPRINKLER KITS
7

HOSE
1500 - 1 1/2 inch (NH) **0** - 1 inch (NPSH) **1500** - 3/4 inch (NH)





APPLIANCES
GATED WYE
3 - 1 1/2 inch (NH) **0** - 1 inch (NPSH) **10** - 3/4 inch (NH)

REDUCER
1 1/2 inch (NH) TO 1 inch (NPSH)
3

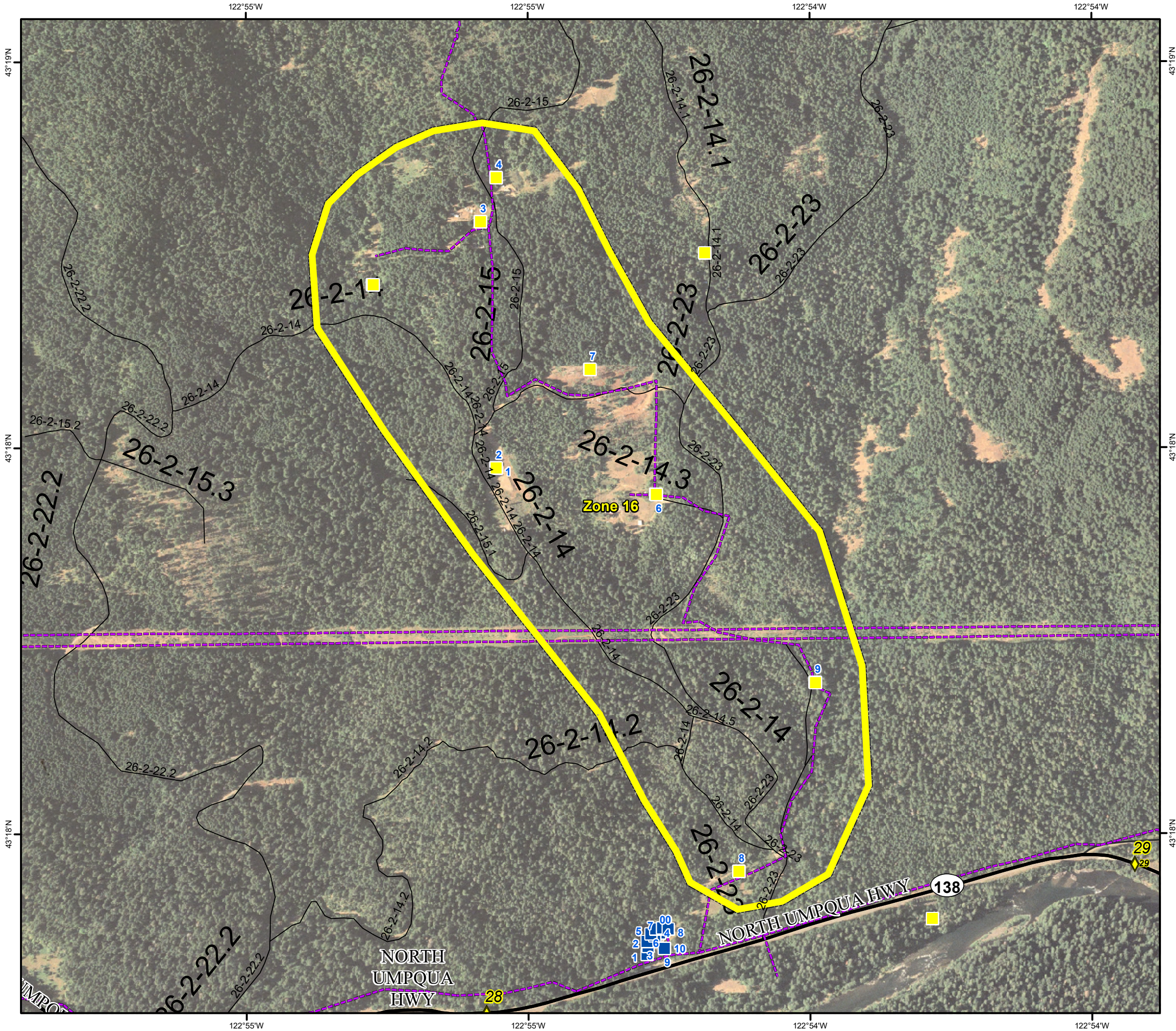
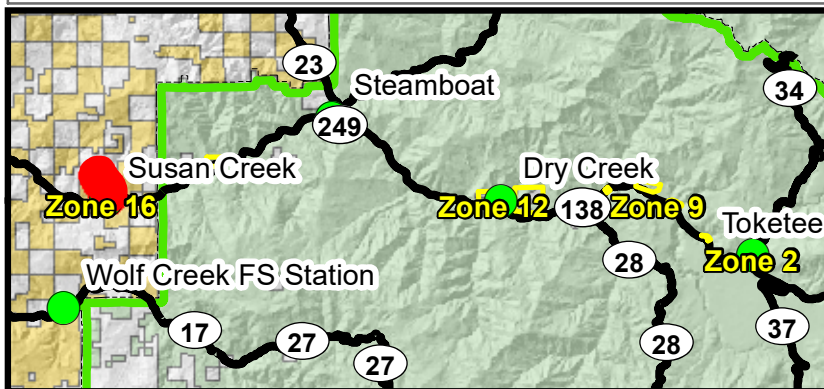
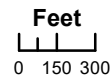
1 inch (NPSH) TO 3/4 INCH (NH)
3



Umpqua North Complex
OR-UPF-000406
9/9/2017
Structures

-  Mile Post
-  Structure
-  Powerline
-  Roads

ZONE 16
LOCATION SUSAN CREEK STRUCTURES
LOCATION Hwy 138 @ Mile Marker 28
EVACUATION ZONE Mile Marker 24 to Mile Marker 31 Susan Creek
RESIDENCE 9
COMMERCIAL BUILDINGS 0
TOTAL STRUCTURES 9
SUPPLIES NEEDED YES
PORTABLE PUMPS 2
WATER TANKS 0 - 1800 Gal 2 - 3000Gal
SPRINKLER KITS 8
HOSE 1500 - 1 1/2 inch (NH) 0 - 1 inch (NPSH) 1300 - 3/4 inch (NH)
APPLIANCES GATED WYE 9 - 1 1/2 inch (NH) 0 - 1 inch (NPSH) 15 - 3/4 inch (NH)
REDUCER 1 1/2 inch (NH) TO 1 inch (NPSH) 9
1 inch (NPSH) TO 3/4 INCH (NH) 9



**Umpqua North
Complex
OR-UPF-000406
9/9/2017
Structures**

■ Structure
— Roads

**ZONE
17**

LOCATION
SUSAN CREEK MOBILE HOME PARK

LOCATION
Hwy 138 @ Mile Marker 28.5

EVACUATION ZONE
Mile Marker 24 to Mile Marker 31
Susan Creek

RESIDENCE
10
COMMERCIAL BUILDINGS
0
TOTAL STRUCTURES
10

SUPPLIES NEEDED
YES

PORTABLE PUMPS
2

WATER TANKS
0 - 1800 Gal 2 - 3000Gal

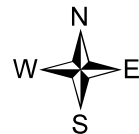
SPRINKLER KITS
8

HOSE
500 - 1 1/2 inch (NH) 0 - 1 inch (NPSH) 300 - 3/4 inch (NH)

APPLIANCES
GATED WYE
2 - 1 1/2 inch (NH) 0 - 1 inch (NPSH) 5 - 3/4 inch (NH)

REDUCER
1 1/2 inch (NH) TO 1 inch (NPSH)
5

1 inch (NPSH) TO 3/4 INCH (NH)
5



Feet

