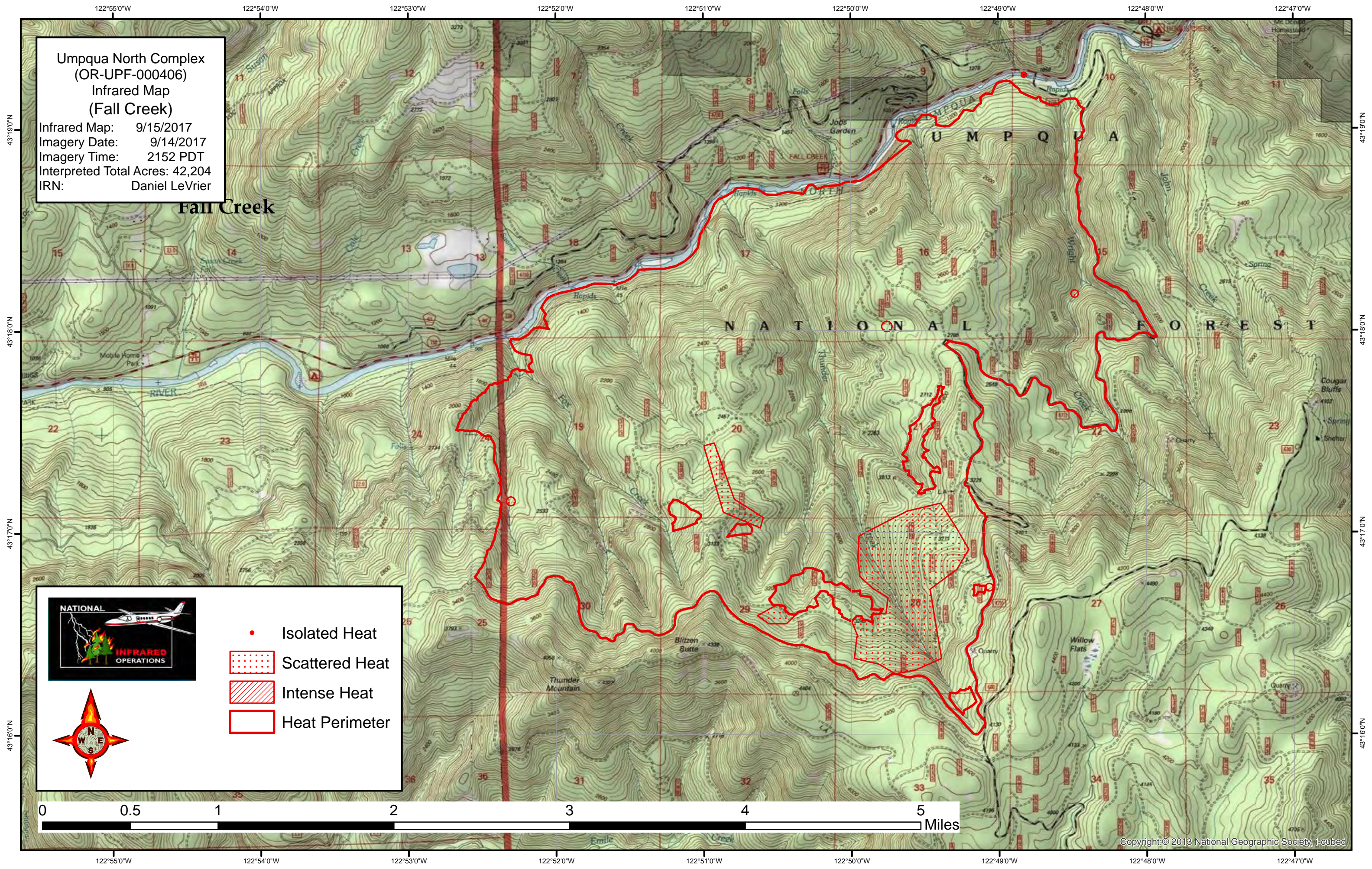


**Umpqua North Complex**  
**(OR-UPF-000406)**  
**Infrared Map**  
**(Fall Creek)**  
 Infrared Map: 9/15/2017  
 Imagery Date: 9/14/2017  
 Imagery Time: 2152 PDT  
 Interpreted Total Acres: 42,204  
 IRN: Daniel LeVrier



- Isolated Heat
- Scattered Heat
- / / / / / Intense Heat
- Heat Perimeter

