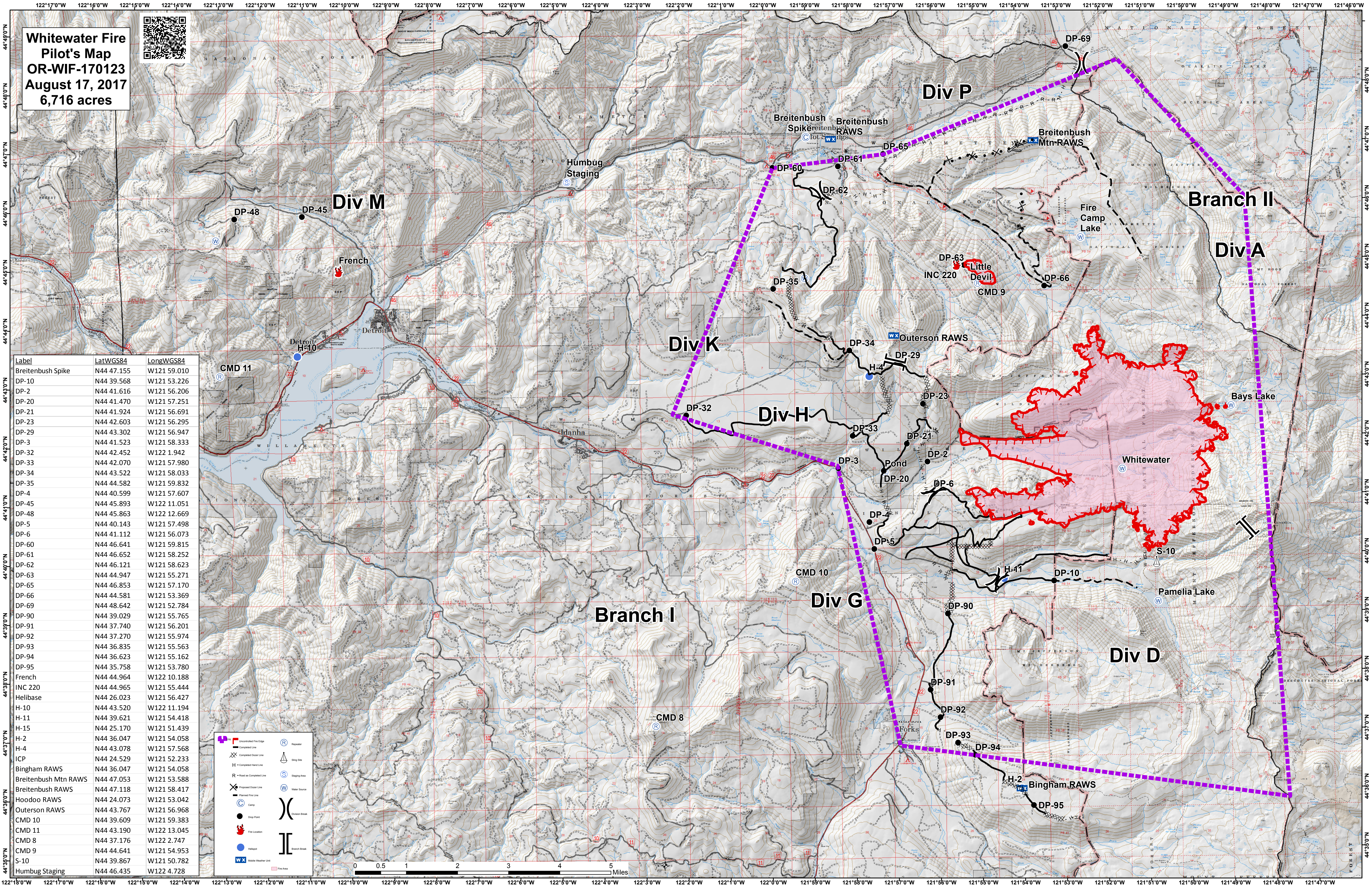


**Whitewater Fire  
Pilot's Map  
OR-WIF-170123  
August 17, 2017  
6,716 acres**



Label	LatWGS84	LongWGS84
Breitenbush Spike	N44 47.155	W121 59.010
DP-10	N44 39.568	W121 53.226
DP-2	N44 41.616	W121 56.206
DP-20	N44 41.470	W121 57.251
DP-21	N44 41.924	W121 56.691
DP-23	N44 42.603	W121 56.295
DP-29	N44 43.302	W121 56.947
DP-3	N44 41.523	W121 58.333
DP-32	N44 42.452	W122 1.942
DP-33	N44 42.070	W121 57.980
DP-34	N44 43.522	W121 58.033
DP-35	N44 44.582	W121 59.832
DP-4	N44 40.599	W121 57.607
DP-45	N44 45.893	W122 11.051
DP-48	N44 45.863	W122 12.669
DP-5	N44 40.143	W121 57.498
DP-6	N44 41.112	W121 56.073
DP-60	N44 46.641	W121 59.815
DP-61	N44 46.652	W121 58.252
DP-62	N44 46.121	W121 58.623
DP-63	N44 44.947	W121 55.271
DP-65	N44 46.853	W121 57.170
DP-66	N44 44.581	W121 53.369
DP-90	N44 48.642	W121 52.784
DP-91	N44 39.029	W121 55.765
DP-92	N44 37.740	W121 56.201
DP-93	N44 37.270	W121 55.974
DP-94	N44 36.835	W121 55.563
DP-95	N44 36.623	W121 55.162
French	N44 44.964	W122 10.188
INC 220	N44 44.965	W121 55.444
Helibase	N44 26.023	W121 56.427
H-10	N44 43.520	W122 11.194
H-11	N44 39.621	W121 54.418
H-15	N44 25.170	W121 51.439
H-2	N44 36.047	W121 54.058
H-4	N44 43.078	W121 57.568
ICP	N44 24.529	W121 52.233
Bingham RAWs	N44 36.047	W121 54.058
Breitenbush Mtn RAWs	N44 47.053	W121 53.588
Breitenbush RAWs	N44 47.118	W121 58.417
Hoodoo RAWs	N44 24.073	W121 53.042
Outerson RAWs	N44 43.767	W121 56.968
CMD 10	N44 39.609	W121 59.383
CMD 11	N44 43.190	W121 58.345
CMD 8	N44 37.176	W122 2.747
CMD 9	N44 44.641	W121 54.953
S-10	N44 39.867	W121 50.782
Humbug Staging	N44 46.435	W122 4.728

**Legend**

- Uncompleted Fire Edge
- Completed Fire Line
- Completed Hand Line
- Proposed Fire Line
- Planned Fire Line
- Fire Location
- Helibase
- Mobile Weather Unit
- Fire Area
- Repeater
- Slip Site
- Staging Area
- Water Source
- Camp
- Drop Point
- Division Break
- Branch Break

