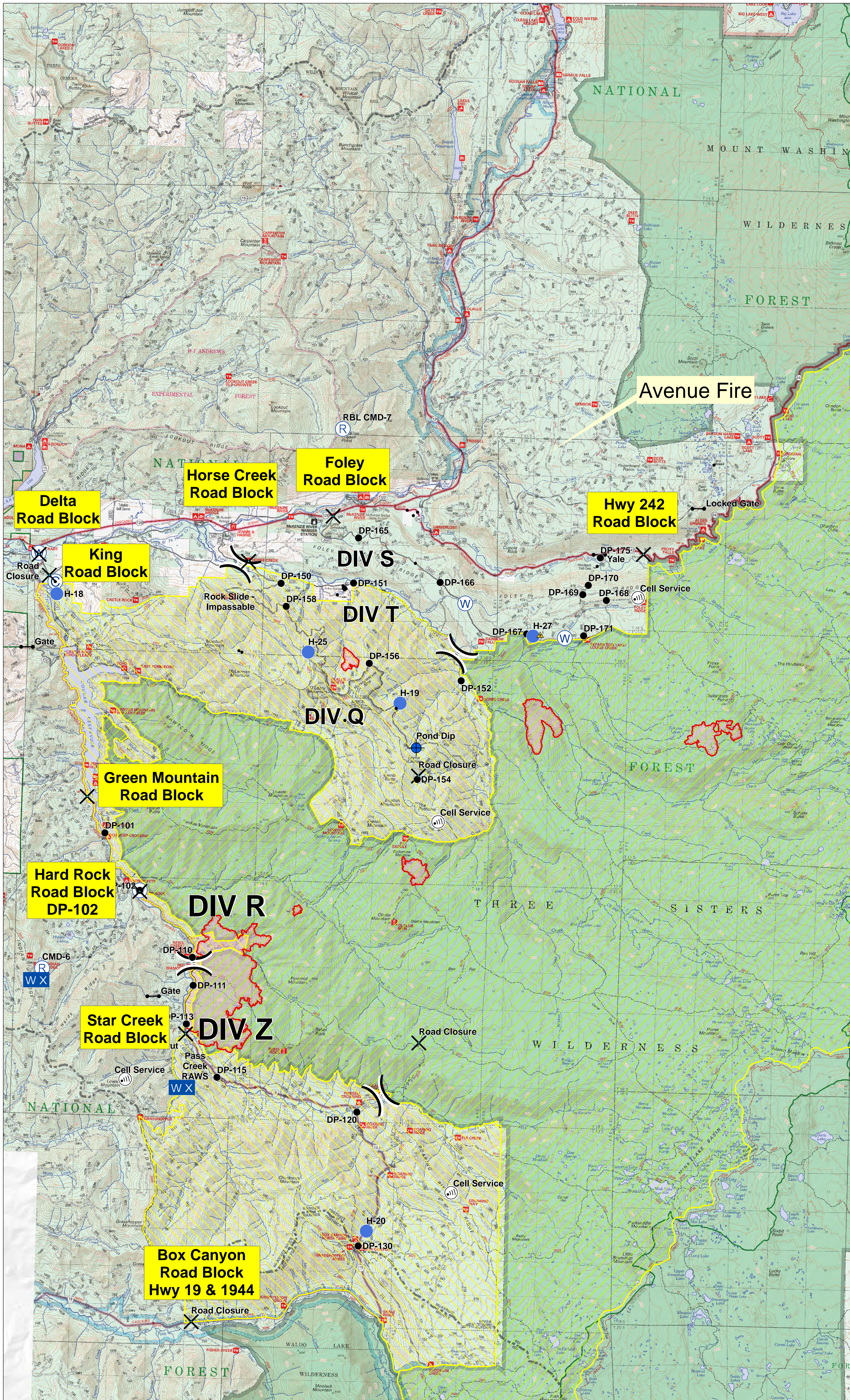


Horse Creek Complex, Rebel and Vicinity Fires Area and Road Closure Map

OR-WIF
August 27, 2017



- ◆ Structures
- ⊙ Camp
- ✕ Closure
- ⊕ Dip Site
- Drop Point
- Gate
- Helispot
- Ⓜ Internet Access
- WX Mobile Weather Unit
- Ⓡ Repeater
- ▲ Safety Zone
- Ⓜ Water Source
- ⋮ Value at Risk
- Other
-) (Division Break
- Uncontrolled Fire Edge
- Completed Line
- ⊘ Completed Dozer Line
- · · Completed Hand Line
- · · Road as Completed Line
- ⊘ · · · Proposed Dozer Line
- - - Planned Fire Line
- · · Other
- ▭ ThreeSistersWildernessClosureArea
- ▭ RebelFireClosureArea
- ▭ Fire Area

