

Rebel Fire/Horse Creek Complex IAP Index 8/27/2017

Locked Gate

Branch III

Page: 2

Page: 1

Page: 4

Page: 5

Page: 3

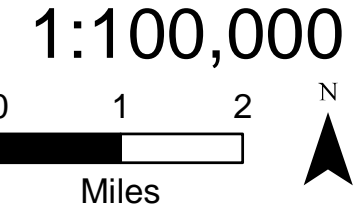
Page: 7

Page: 6

Page: 8

- Camp
- Closure
- Dip Site
- Drop Point
- Gate
- Helispot
- Internet Access
- Lookout
- Mobile Weather Unit
- Pump
- Repeater
- Safety Zone
- Water Source
- Value at Risk
- Division Break

- Uncontrolled Fire Edge
- Completed Line
- Completed Dozer Line
- Completed Hand Line
- Road as Completed Line
- Proposed Dozer Line
- Planned Fire Line
- Other
- Fire Area



Rebel Base Camp
 H-18

Rock Slide - Impassable

Avenue Fire

Roney

Separation

Pond Dip

Potential Pump Site

Road Closure

Cell Service

181

DP-101

DP-102

Div Z Pete

CMDR

Pump Site Rebel

Gate

DP-111

DP-113

Rebel Lookout

Cell Service

Div R

Pass Creek

RAWS

DP-120

Road Closure

Olallie Lookout

DP-150

DP-158

H-25

DP-156

Div Q

Div T

Div S

DP-165

DP-151

DP-166

DP-175

DP-170

Yale

DP-168

DP-169

H-27

DP-171

DP-167

DP-152

DP-154

DP-101

DP-102

DP-110

DP-111

DP-113

DP-115R

DP-120

Cell Service

Cell Service

181

Rebel Fire Horse Creek Complex



8/7/2017

Drop Point
Helispot



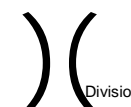
Lookout



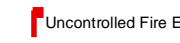
Pump



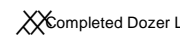
Other



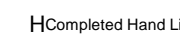
Division Break



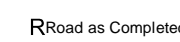
Uncontrolled Fire Edge



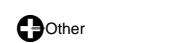
Completed Dozer Line



Completed Hand Line



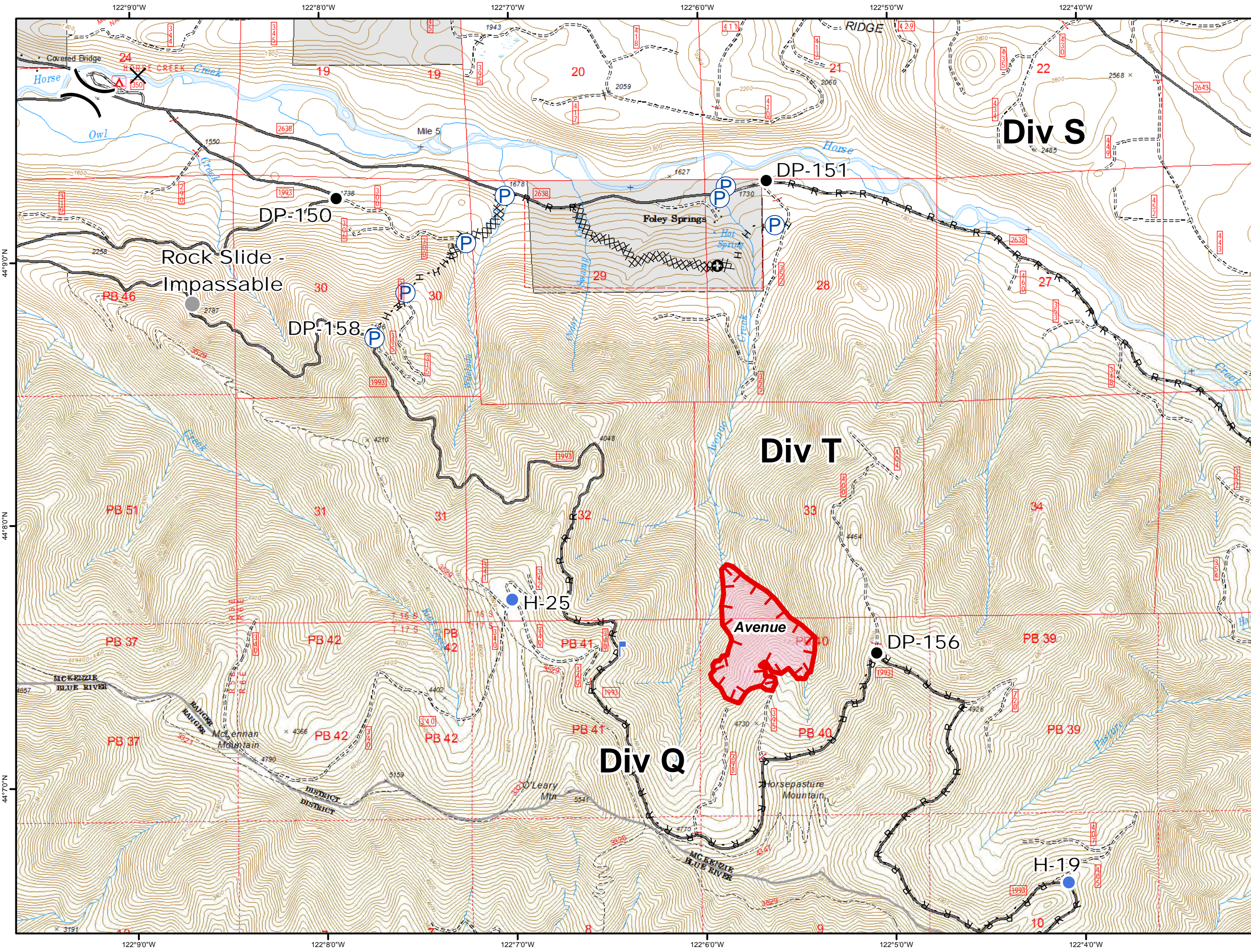
Road as Completed Line



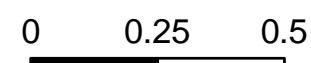
Other



Fire Area



1:24,000



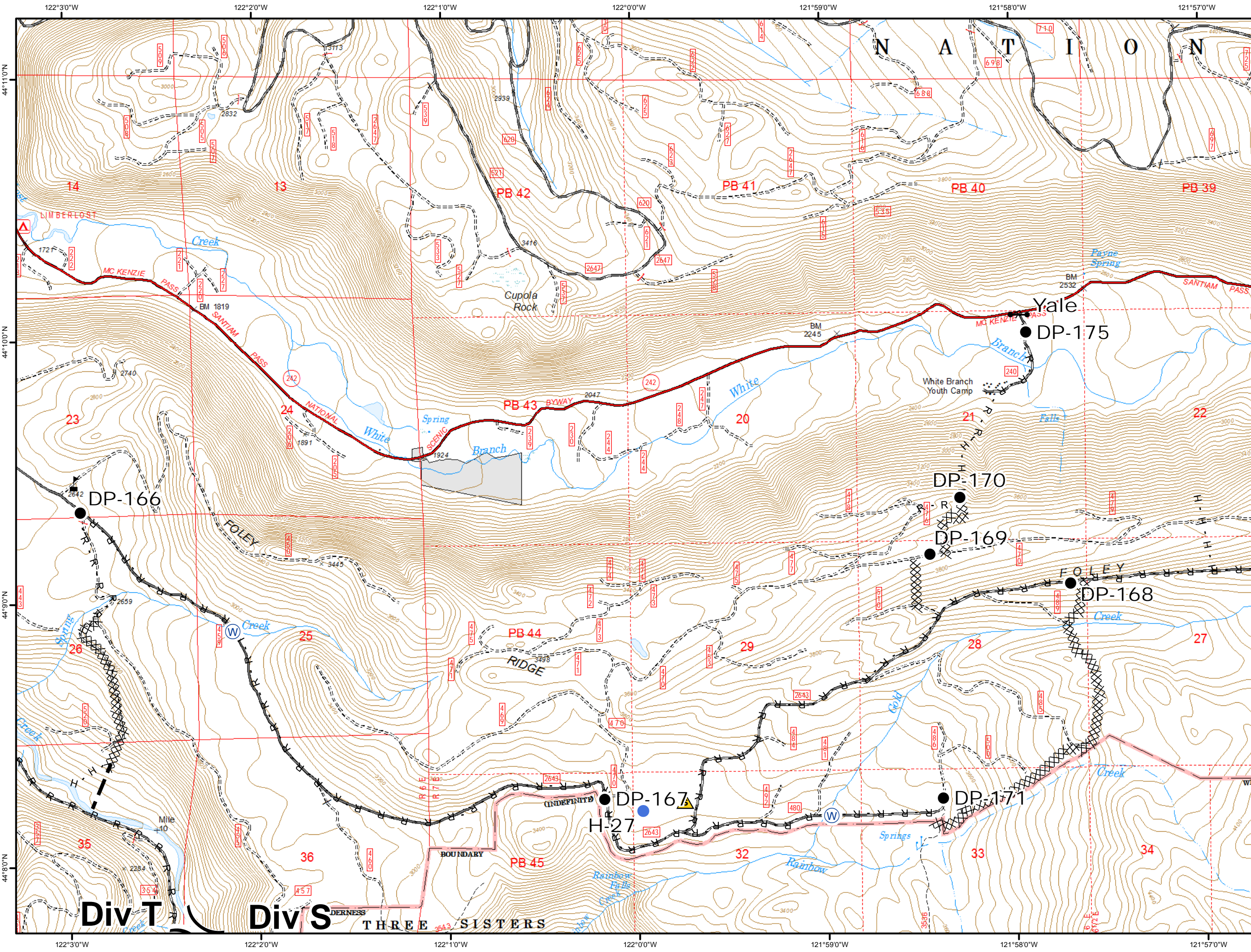
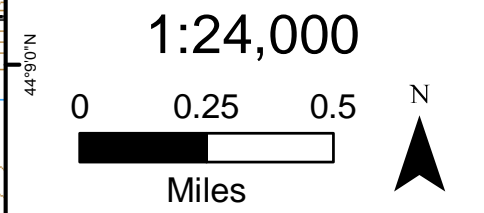
Miles



Rebel Fire Horse Creek Complex IAP Packet 8/27/2017

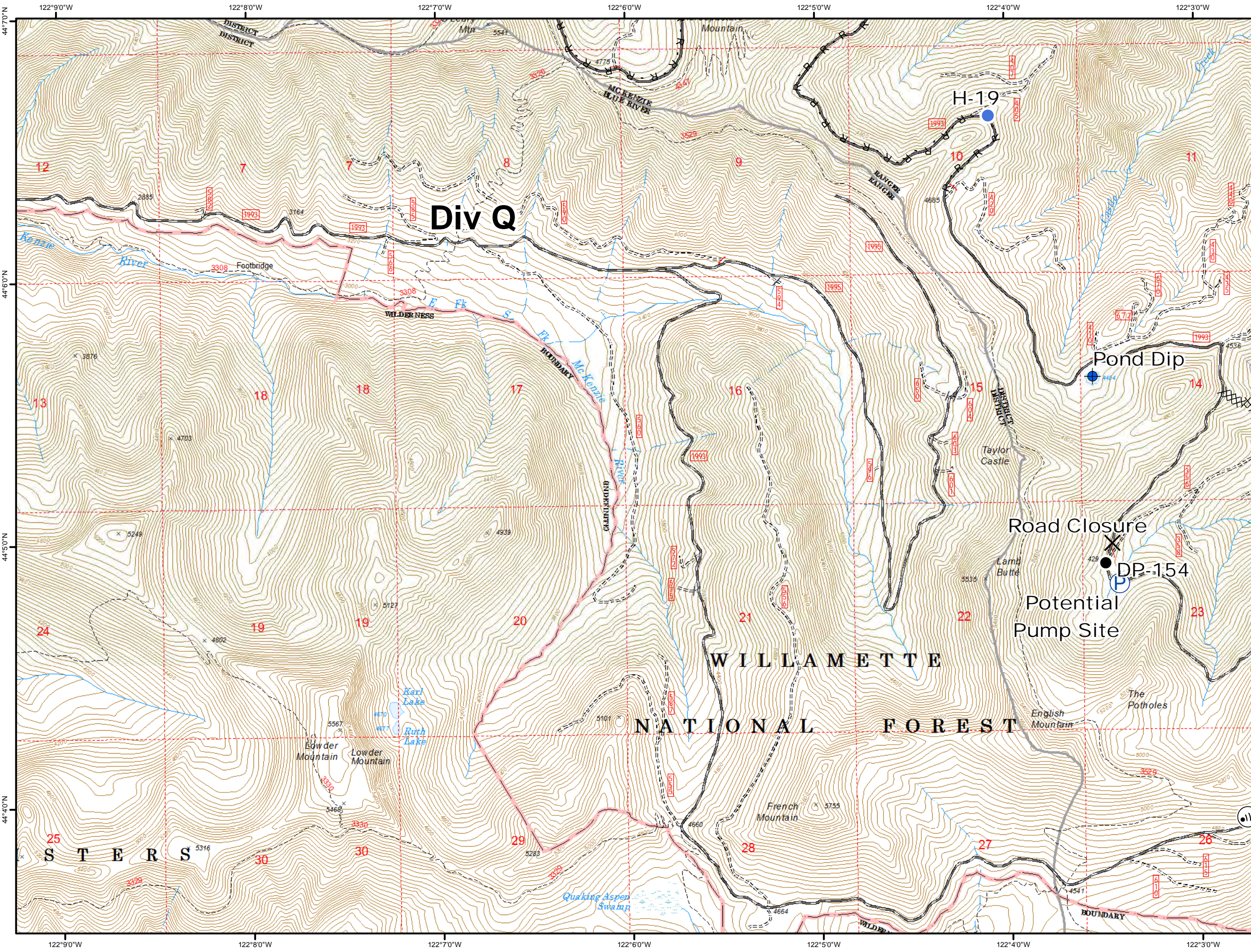
- Drop Point
- Gate
- Helispot
- Safety Zone
- Water Source
- Value at Risk
- Division Break

- Completed Dozer Line
- Completed Hand Line
- Road as Completed Line
- Planned Fire Line

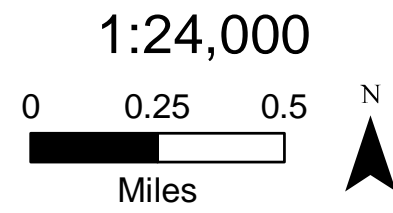


Div T Div S DERNESSE THREE SISTERS

**Rebel Fire
Horse Creek Complex
IAP
Packet
8/27/2017**



- Closure
- Dip Site
- Drop Point
- Helispot
- Internet Access
- Pump
- Completed Dozer Line
- Road as Completed Line

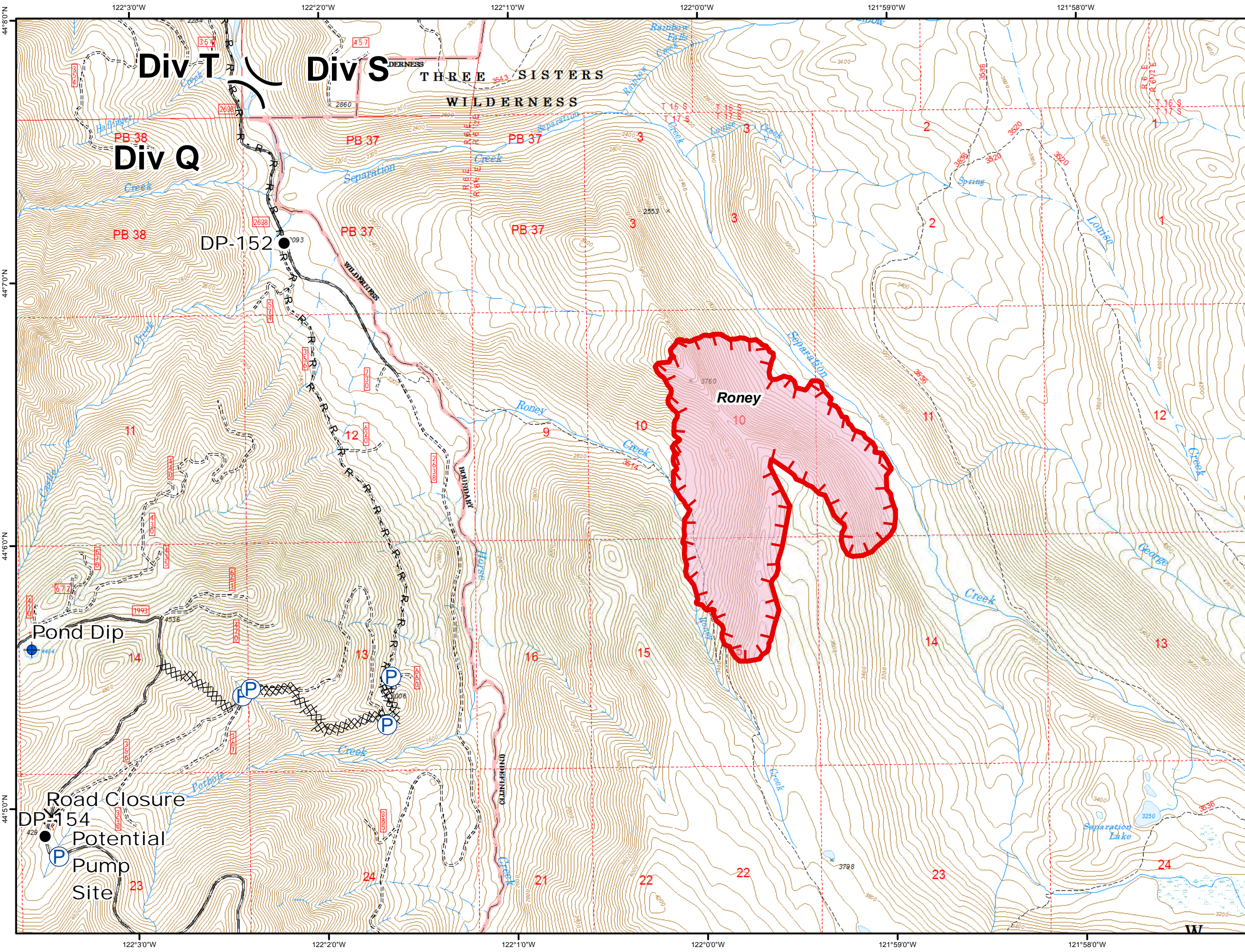
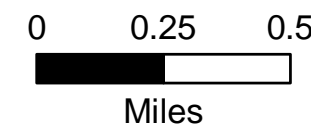


Rebel Fire Horse Creek Complex IAP Packet 8/27/2017

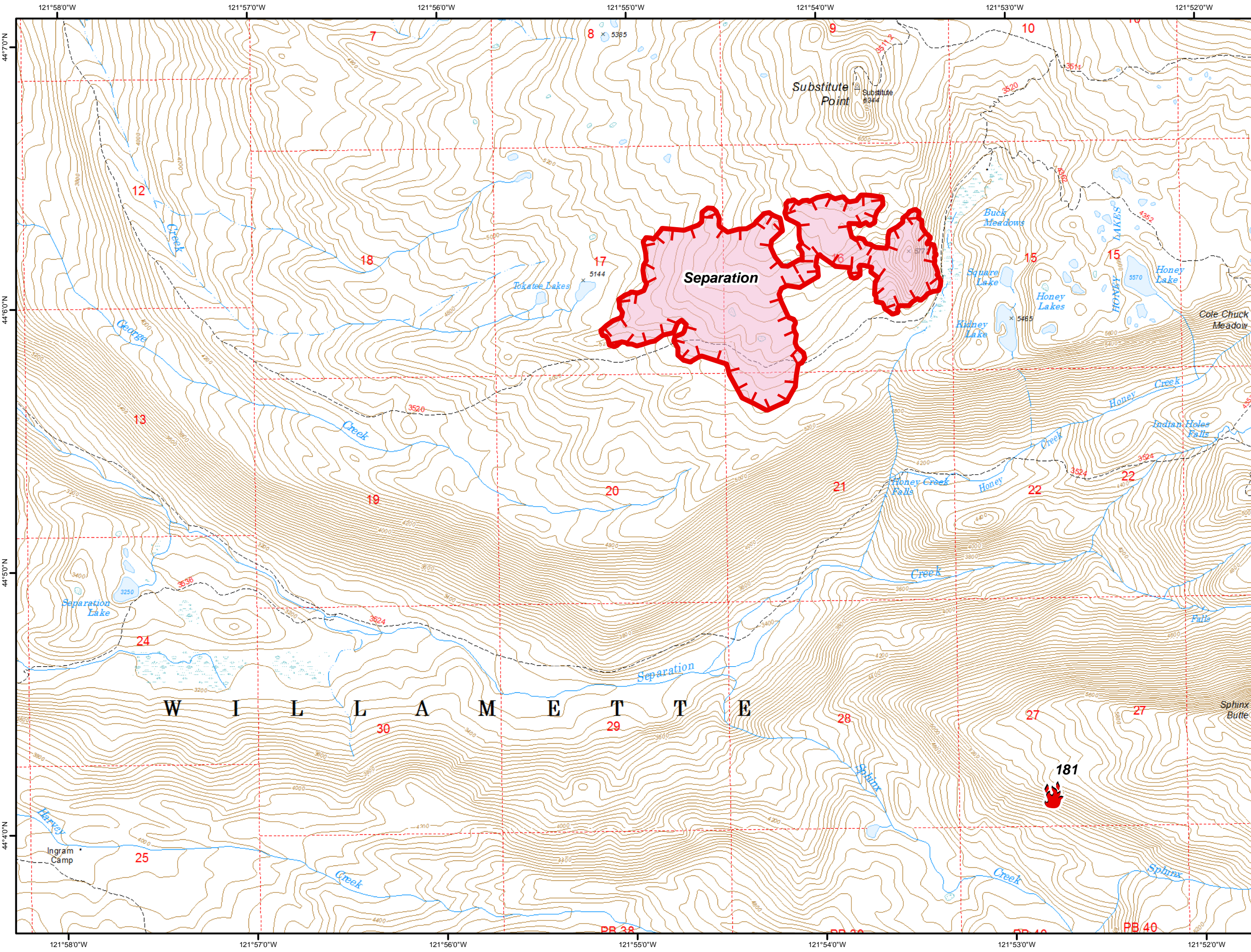
- ✕ Closure
- ⊕ Dip Site
- Drop Point
- P Pump
-) (Division Break


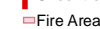
- ▬ Uncontrolled Fire Edge
- ⊗ Completed Dozer Line
- R Road as Completed Line
- Fire Area

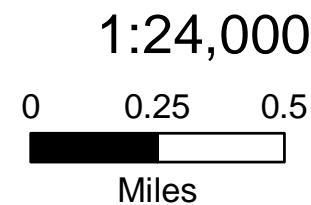
1:24,000



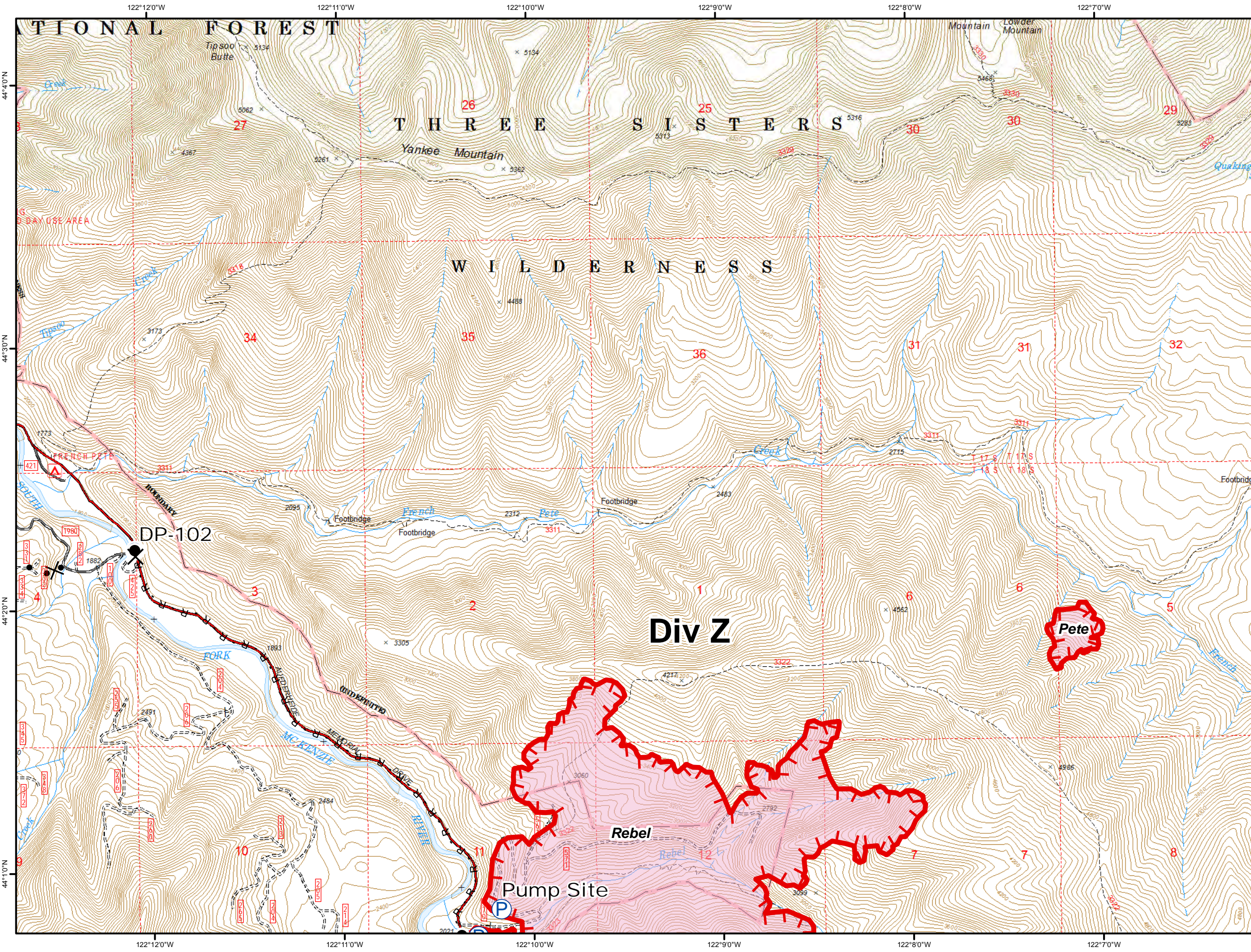
**Rebel Fire
Horse Creek Complex
IAP
Packet
8/27/2017**



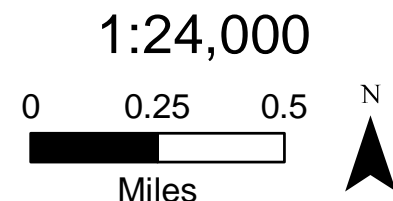
 Uncontrolled Fire Edge
 Fire Area



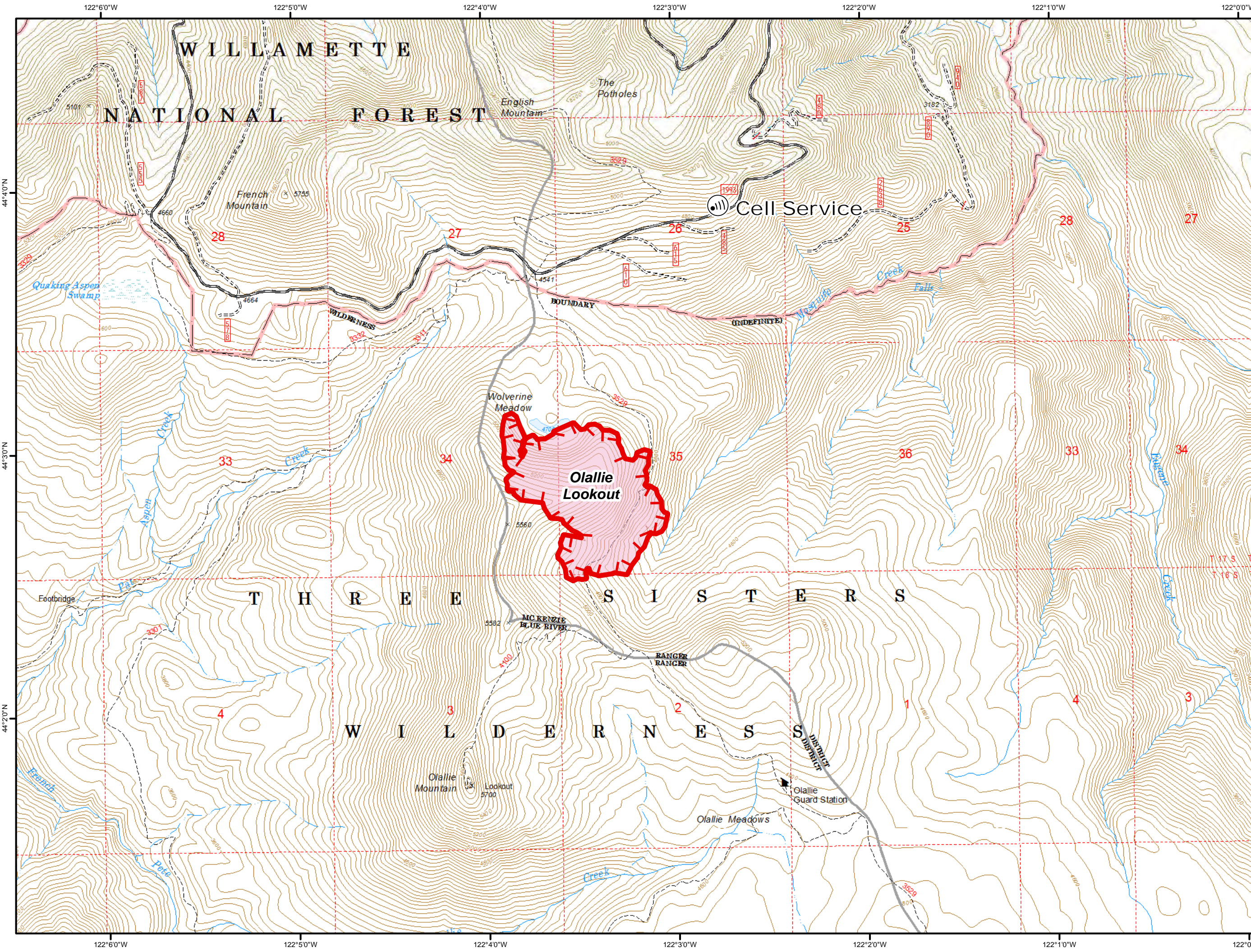
**Rebel Fire
Horse Creek Complex
IAP
Packet
8/27/2017**



- Closure
- Drop Point
- Pump
- Water Source
- Uncontrolled Fire Edge
- Road as Completed Line
- Proposed Dozer Line
- Fire Area

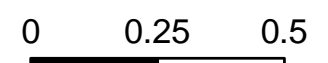


**Rebel Fire
Horse Creek Complex
IAP
Packet
8/27/2017**



Uncontrolled Fire Edge
Fire Area

1:24,000



Miles



Rebel Fire Horse Creek Complex

IAAP
Drop Point
Packet
8/11/2017

- Lookout
- Mobile Weather Unit
- Pump
- Division Break

- Uncontrolled Fire Edge
- Completed Line
- Completed Dozer Line
- Completed Hand Line
- Road as Completed Line
- Proposed Dozer Line
- Fire Area

1:24,000

