

Whitewater, French, Little Devil Fires IAP

August 30, 2017

- Ⓒ Camp
- ✕ Closure
- ⊕ Dip Site
- Drop Point
- ⚓ Gate
- ⊙ Helispot
- ▲ IR Isolated Heat Source
- 📶 Internet Access
- 🏠 Lookout
- 📶 Mobile Weather Unit
- Ⓟ Pump
- Ⓡ Repeater
- ⚠ Safety Zone
- 🌊 Water Source
- 🎵 Value at Risk

🔴 Uncontrolled Fire Edge

— Completed Line

⊗ Completed Dozer Line

H - H - H - Completed Hand Line

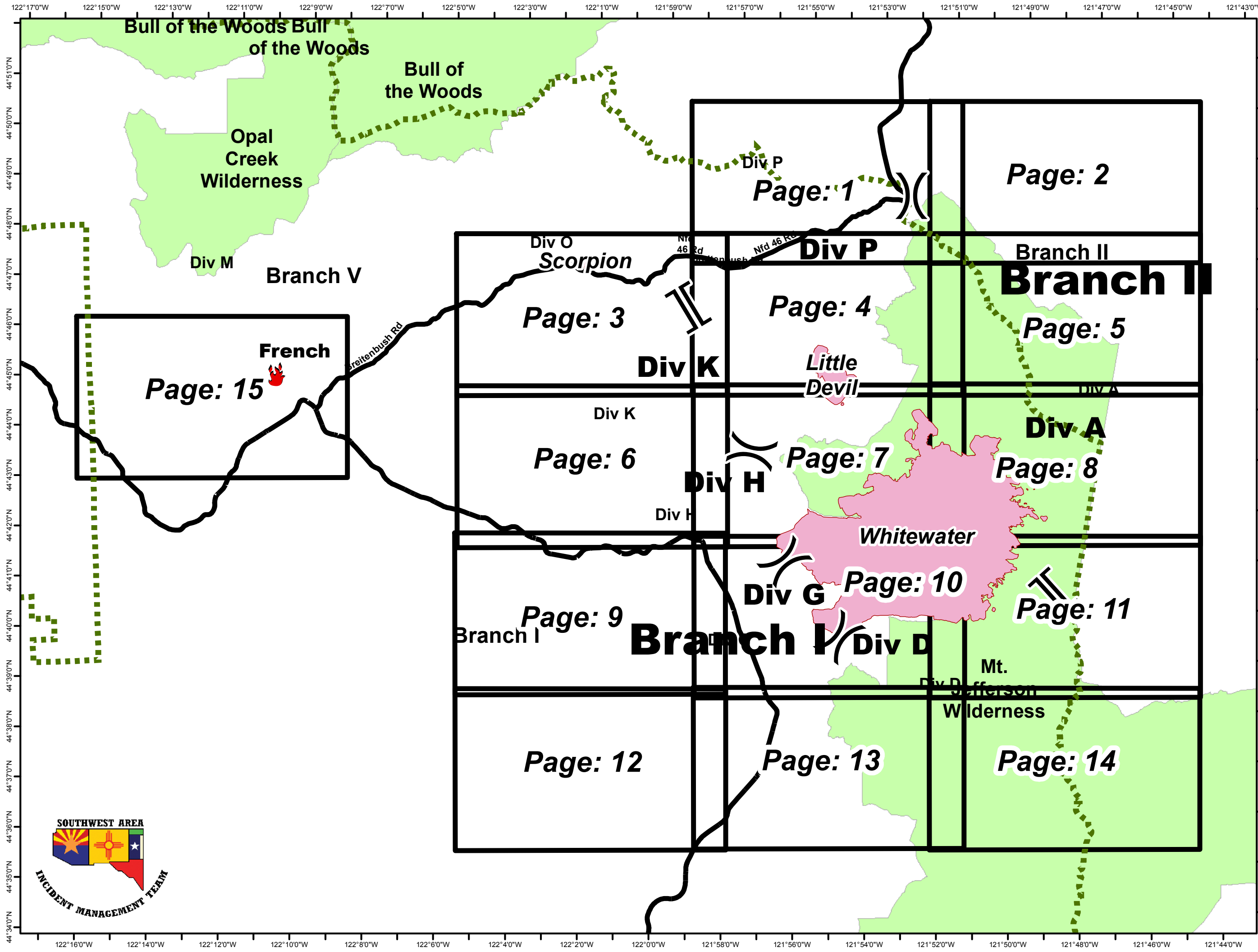
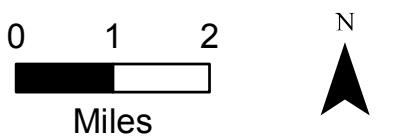
R - R - R - Road as Completed Line

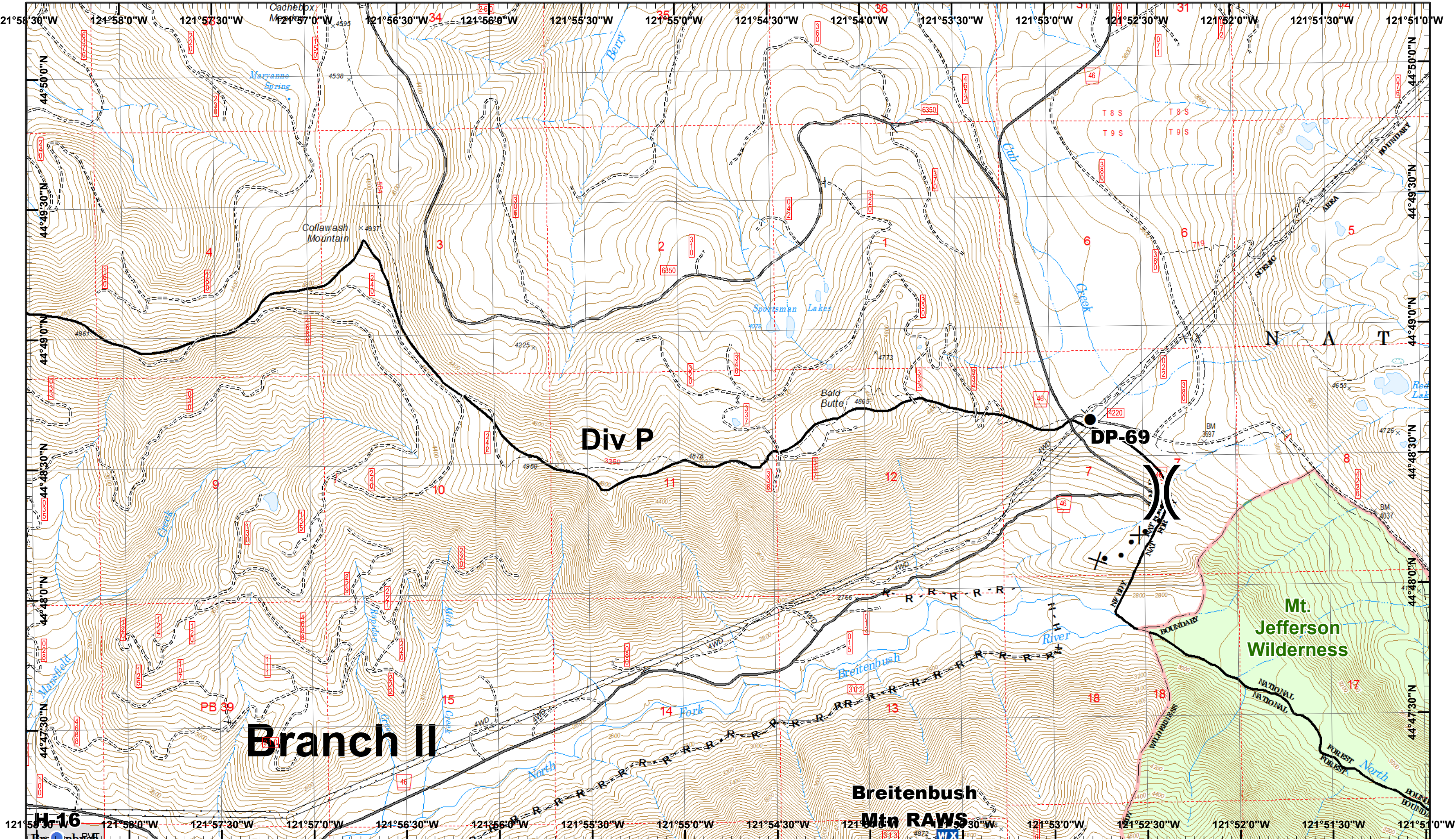
⊗ • ⊗ Proposed Dozer Line

— Planned Fire Line

⊕ Other

1:125,553



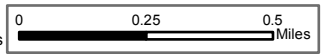


Whitewater Incident
 August 30, 2017

IR 8/29/2017 @ 0316
 Whitewater Fire - 10,278 Acres
 Little Devil Fire - 485 Acres
 French Fire - 2 Acres
 Scorpion Fire - 14 Acres
 Map Created 8/29/2017 8:42:44 PM RDC



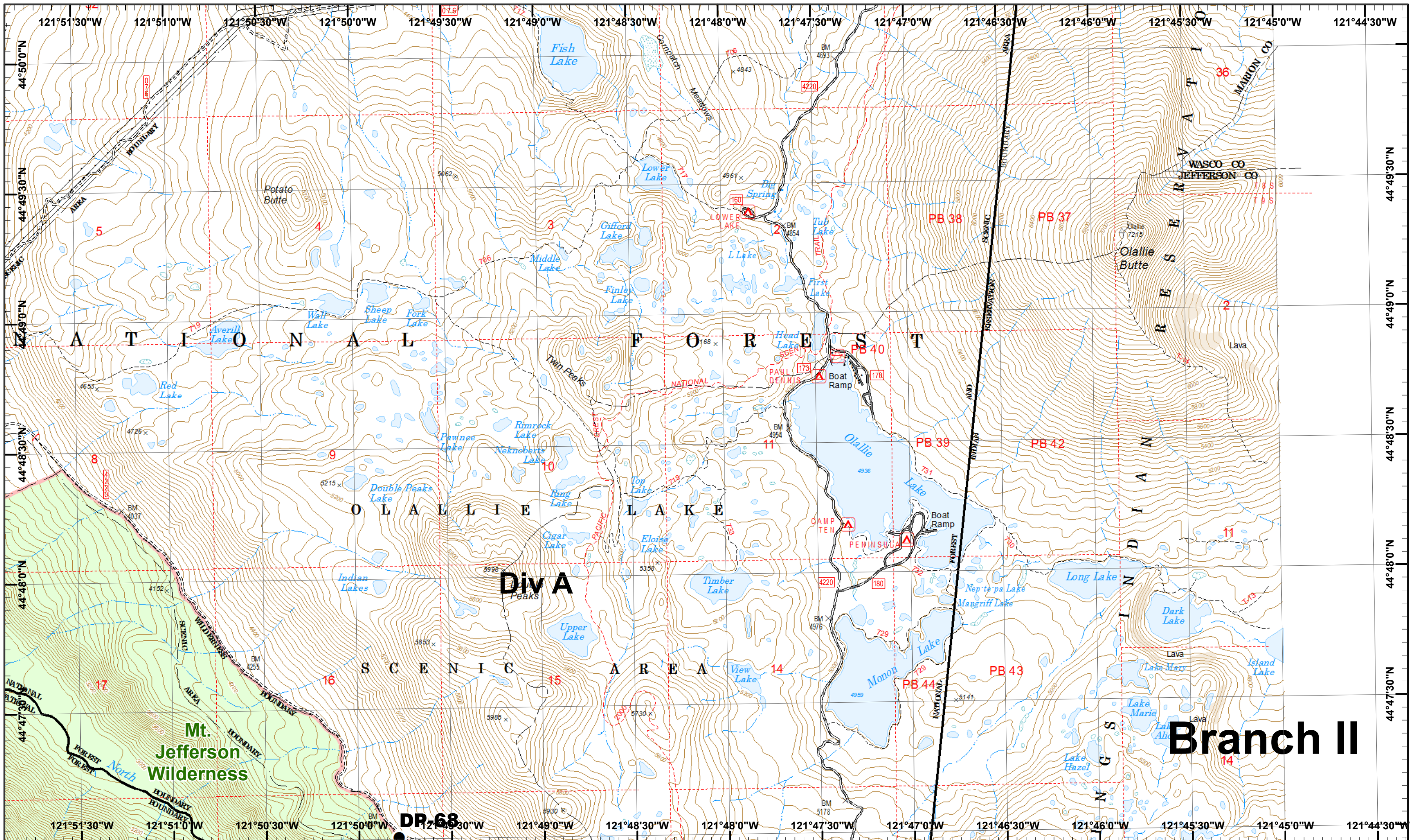
- Drop Point
- Helispot
- WX Mobile Weather
- R - Road as Line
- X • Proposed Dozer
- H - Completed Hand



1	2
3	4
5	6
7	8
9	10
11	12
13	14

Page 1
 () Division
 [] Branch





Branch II

Whitewater Incident
 August 30, 2017

IR 8/29/2017 @ 0316
 Whitewater Fire - 10,278 Acres
 Little Devil Fire - 485 Acres
 French Fire - 2 Acres
 Scorpion Fire - 14 Acres

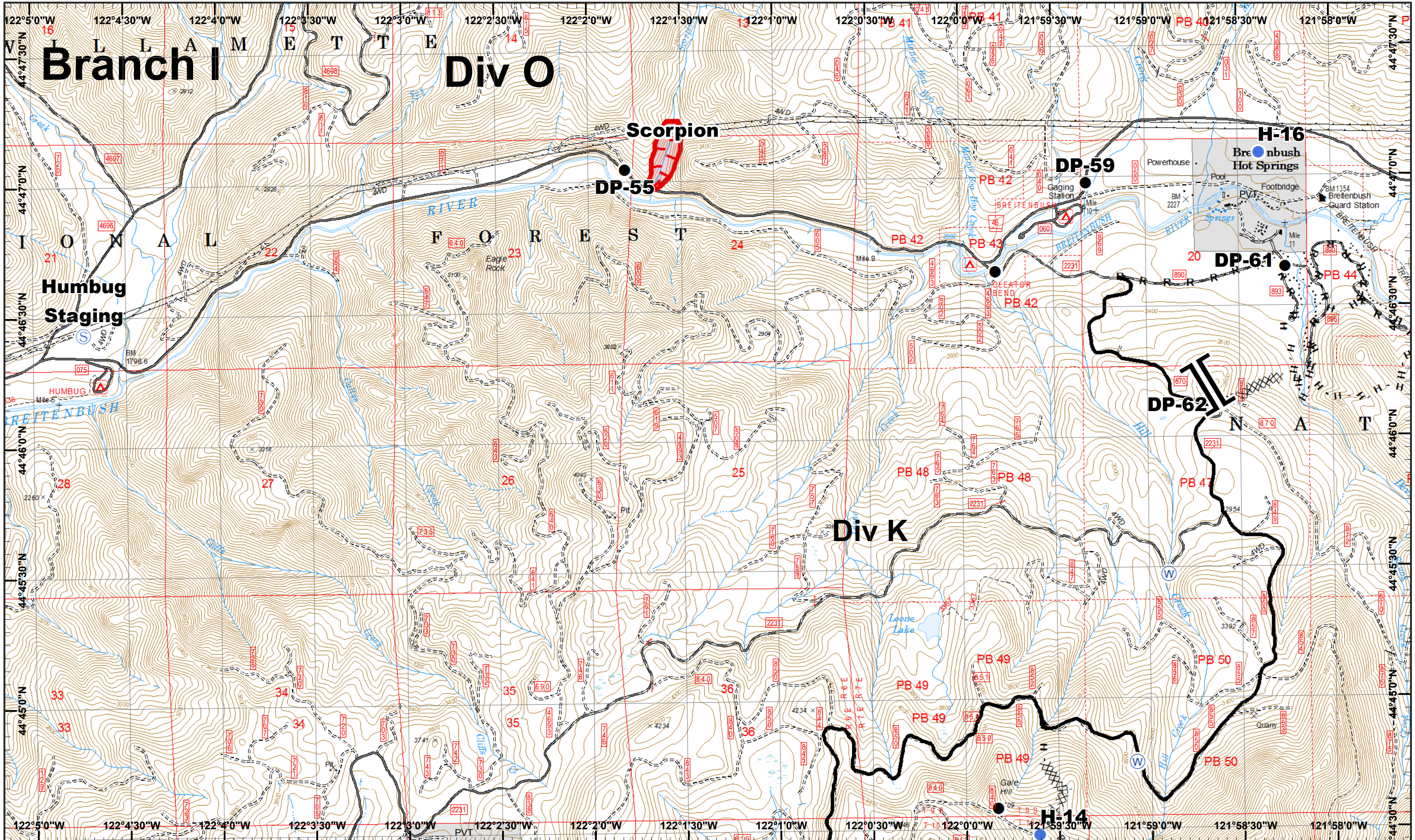
Map Created 8/29/2017 8:44:00 PM RDC

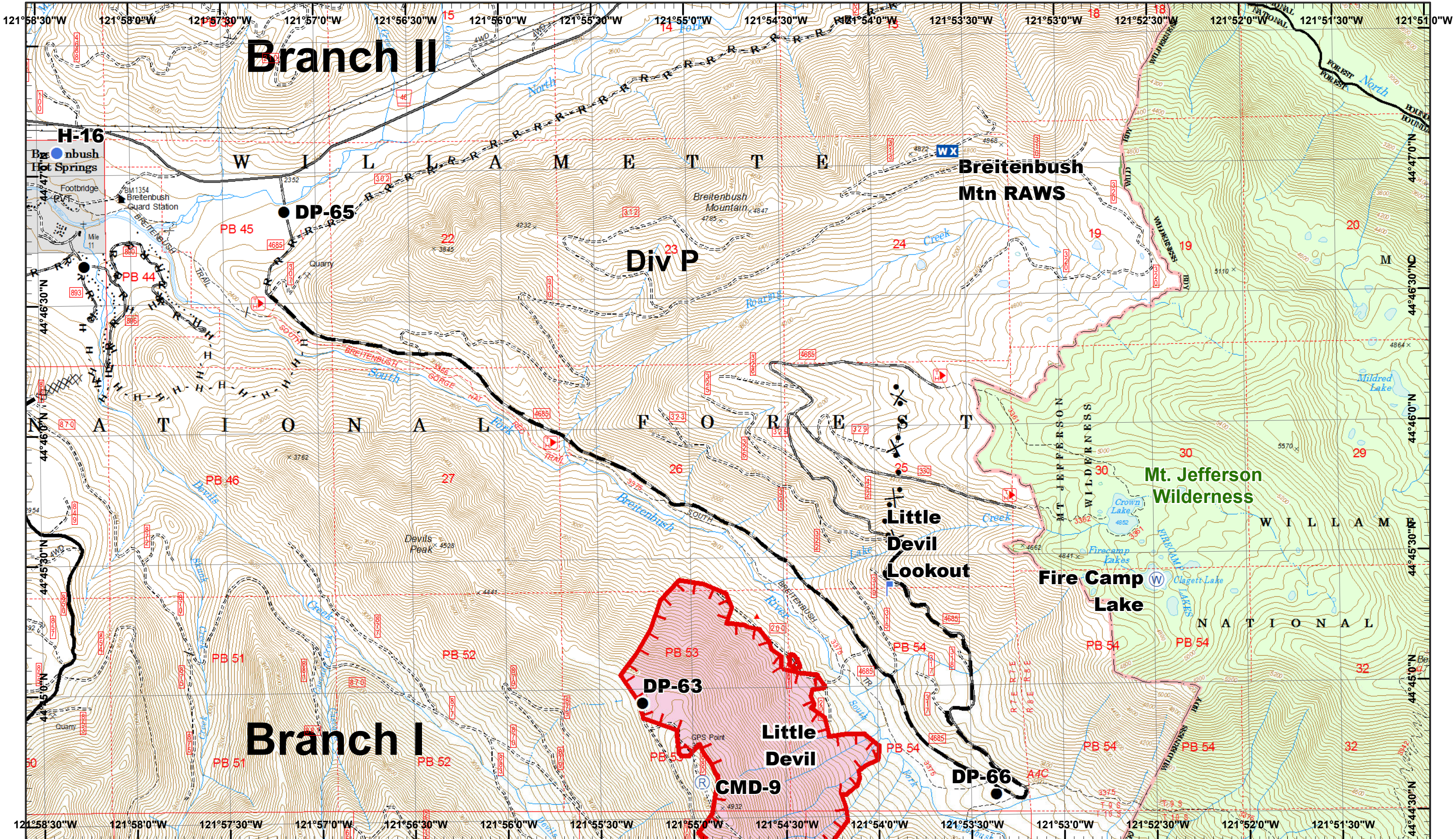
0 0.25 0.5 Miles

Drop Point Water Source



1	2
3	4
5	6
7	8
9	10
11	12
13	14





Branch II

Branch I

Breitenbush Mtn RAWS

Mt. Jefferson Wilderness

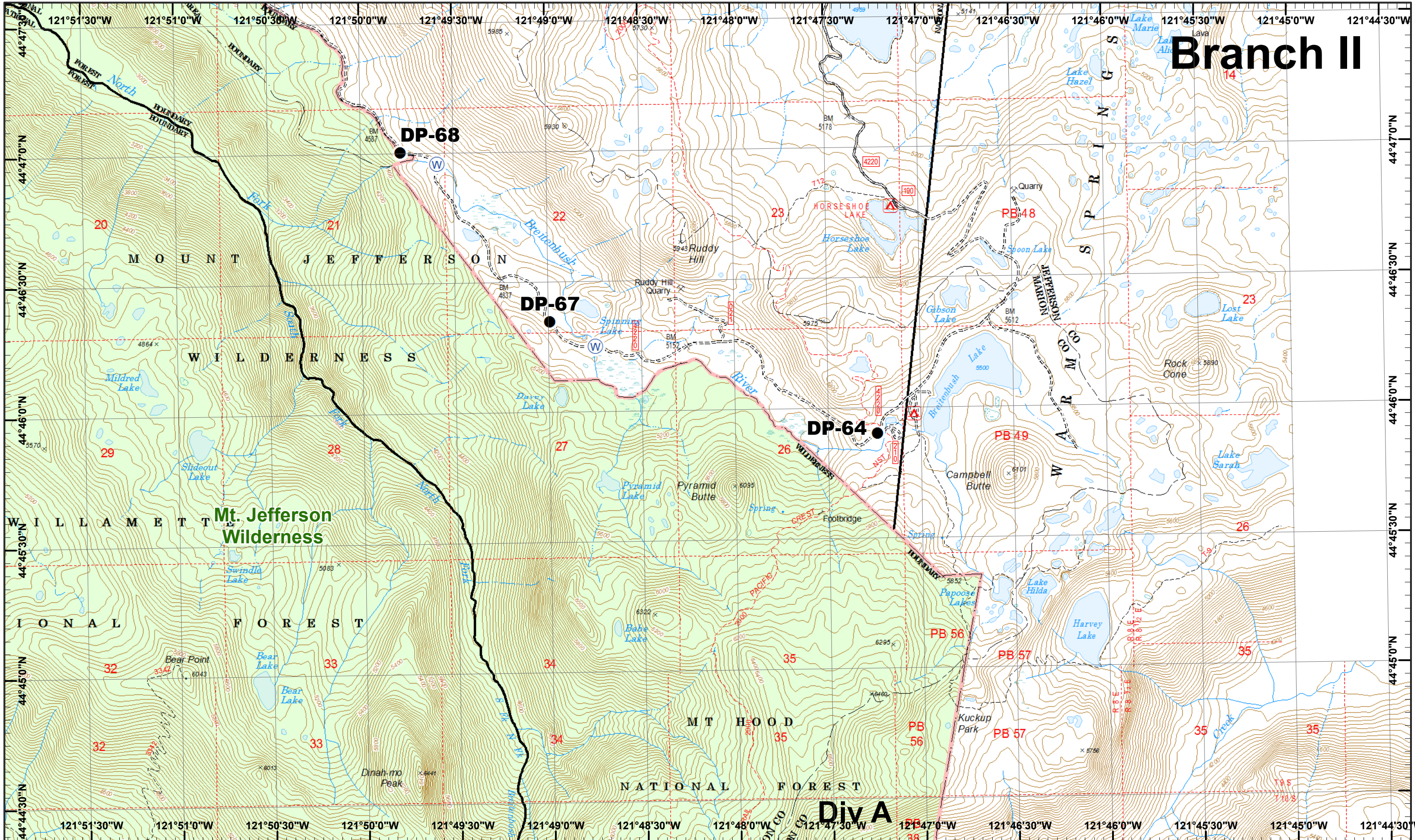
Little Devil
Uncontrolled Fire

Whitewater Incident
 August 30, 2017

IR 8/29/2017 @ 0316
 Whitewater Fire - 10,278 Acres
 Little Devil Fire - 485 Acres
 French Fire - 2 Acres
 Scorpion Fire - 14 Acres

Map Created 8/29/2017 8:44:19 PM RDC

Branch II



Whitewater Incident
August 30, 2017

IR 8/29/2017 @ 0316
Whitewater Fire - 10,278 Acres
Little Devil Fire - 485 Acres
French Fire - 2 Acres
Scorpion Fire - 14 Acres
Map Created 8/29/2017 8:44:28 PM RDC



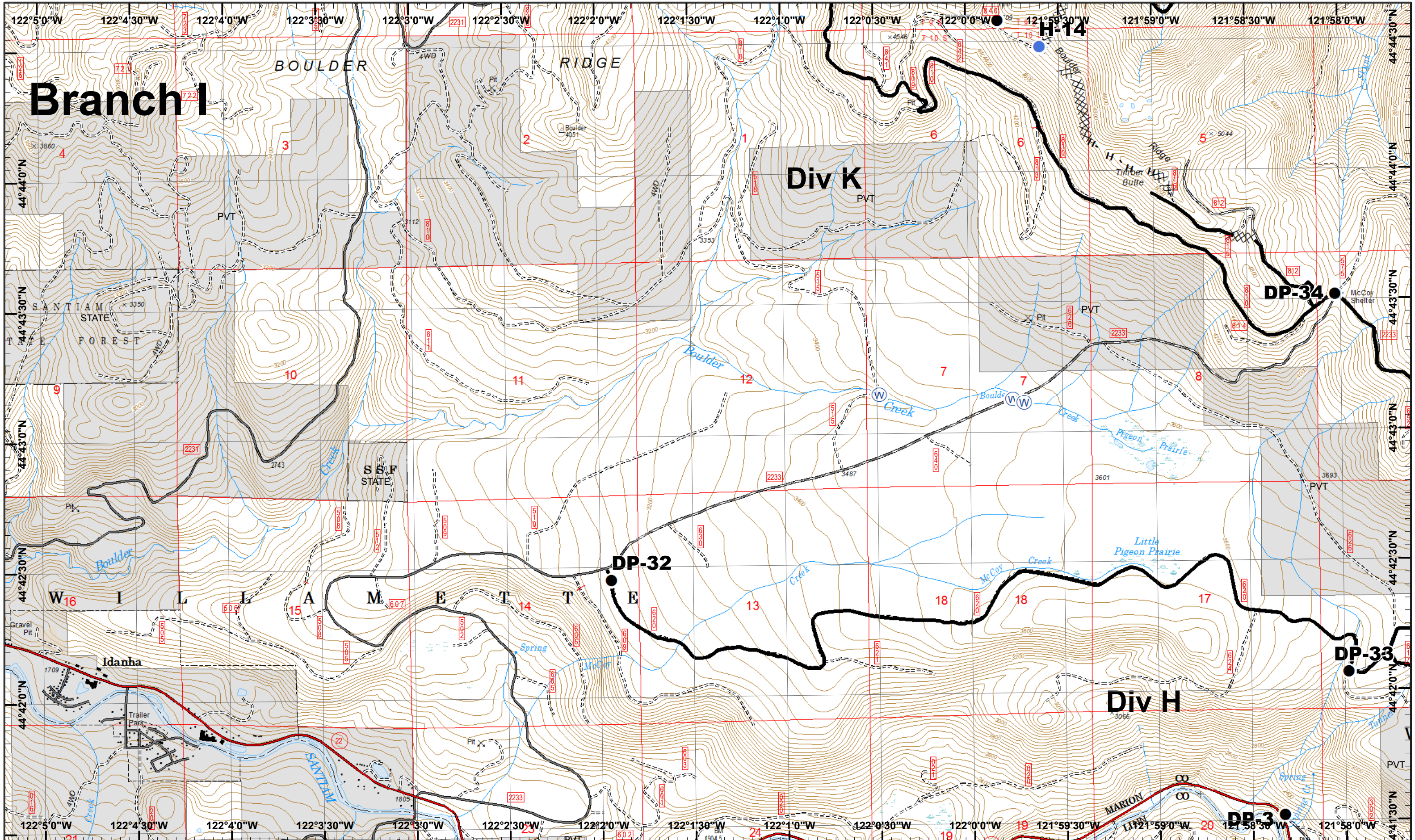
● Drop Point (W) Water Source



1	2
3	4
5	6
7	8
9	10
11	12
13	14

Page 5
(X) Division
([]) Branch





Branch I

Div K
PVT

Div H

Whitewater Incident
 August 30, 2017
 IR 8/29/2017 @ 0316
 Whitewater Fire - 10,278 Acres
 Little Devil Fire - 485 Acres
 French Fire - 2 Acres
 Scorpion Fire - 14 Acres
 Map Created 8/29/2017 8:44:37 PM RDC

Drop Point
 Water Source
 Completed Dozer
 Helispot
 Completed
 Completed Hand



1	2
3	4
5	6
7	8
9	10
11	12
13	14

Branch I

Div K

Little Devil

Mt. Jefferson Wilderness

Whitewater

Div H

Whitewater Incident
August 30, 2017

IR 8/29/2017 @ 0316
Whitewater Fire - 10,278 Acres
Little Devil Fire - 485 Acres
French Fire - 2 Acres
Scorpion Fire - 14 Acres

Map Created 8/29/2017 8:44:47 PM RDC



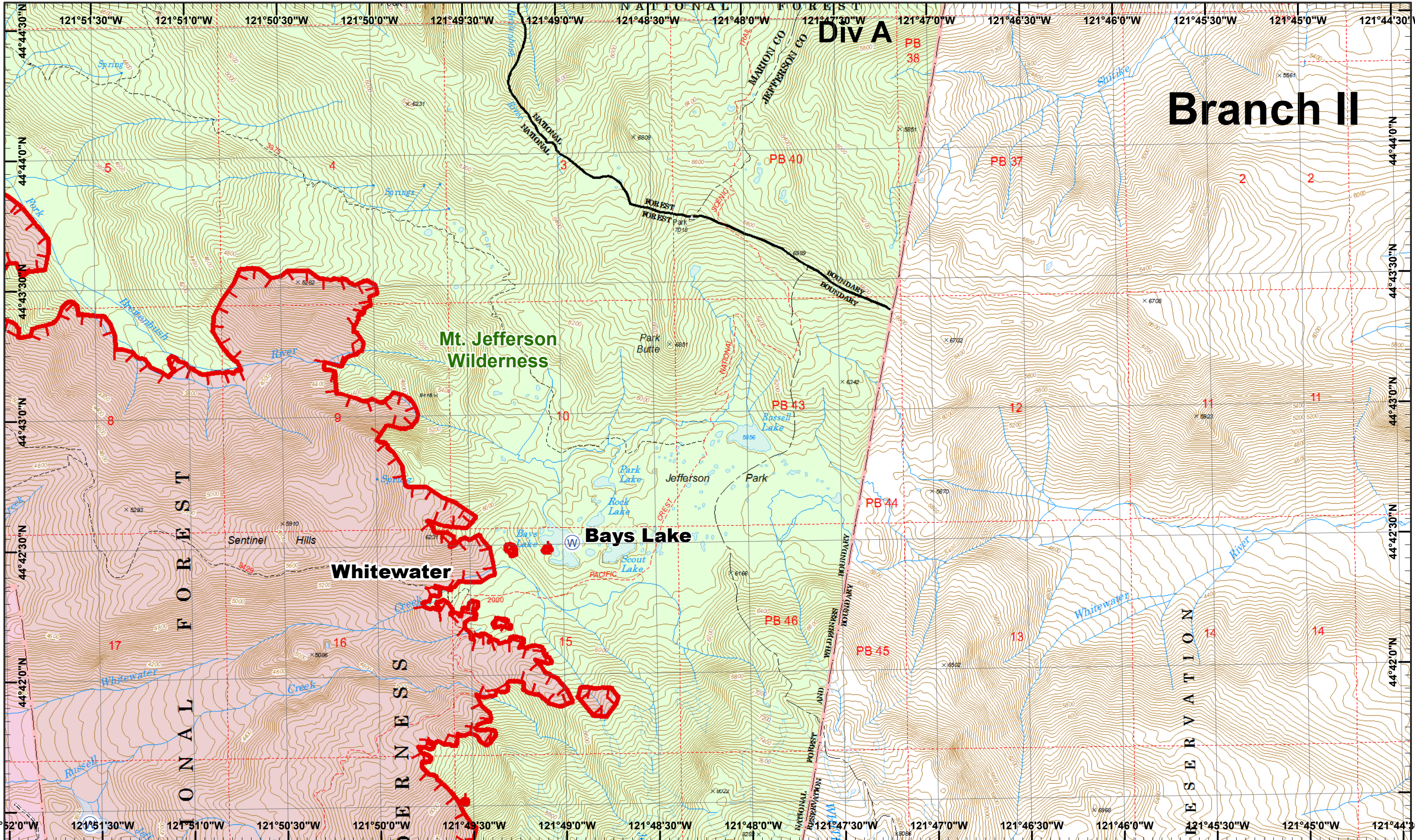
- Drop Point
- ▲ IR Heat Source
- Ⓡ Repeater
- Ⓜ Water Source
- Completed
- H - Completed Hand
- Helispot
- WX Mobile Weather
- Uncontrolled Fire
- Completed Dozer
- Planned Fire Line



3	1	2
6	4	5
9	7	8
12	10	11
15	13	14

Page 7
() Division
[] Branch








Branch II

Whitewater Incident
 August 30, 2017

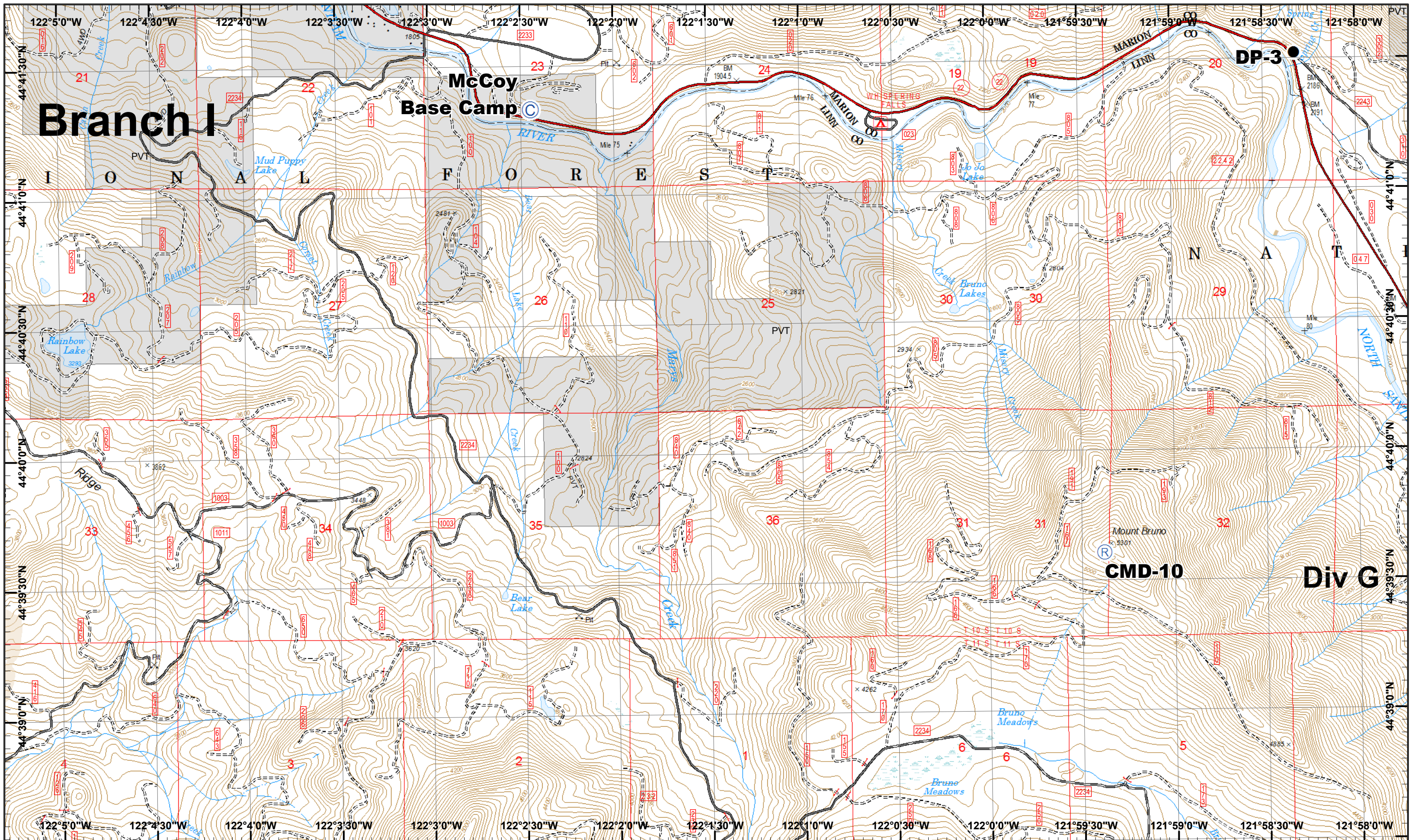
IR 8/29/2017 @ 0316
 Whitewater Fire - 10,278 Acres
 Little Devil Fire - 485 Acres
 French Fire - 2 Acres
 Scorpion Fire - 14 Acres
 Map Created 8/29/2017 8:44:56 PM RDC


 Water Source
 Uncontrolled Fire



1	2
3	4
6	7
9	10
12	13
14	14





Branch I

McCoy Base Camp C

DP-3

CMD-10 R

Div G

Whitewater Incident
 August 30, 2017
 IR 8/29/2017 @ 0316
 Whitewater Fire - 10,278 Acres
 Little Devil Fire - 485 Acres
 French Fire - 2 Acres
 Scorpion Fire - 14 Acres

0 0.25 0.5 Miles
 Map Created 8/29/2017 8:45:05 PM RDC



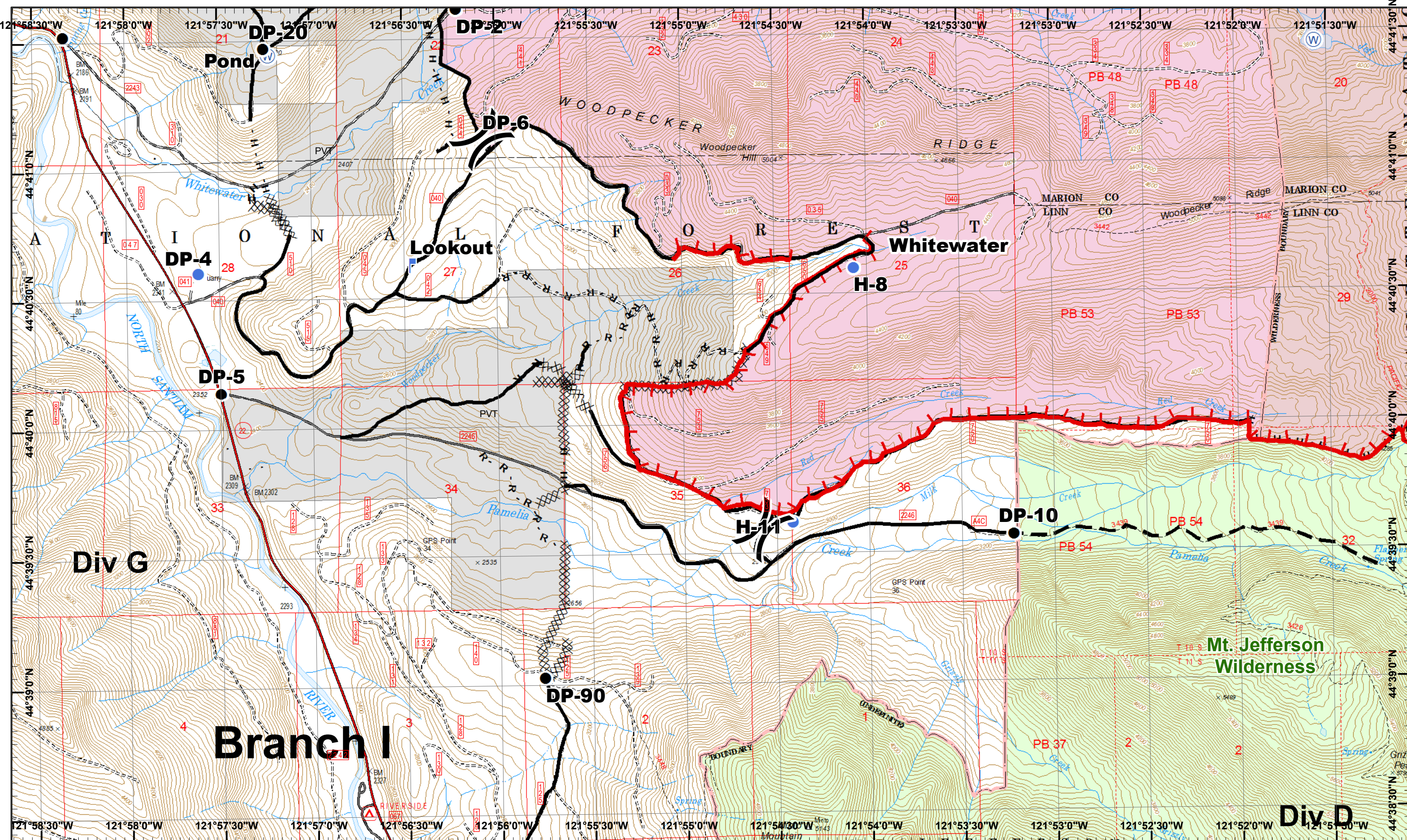
Camp ● Drop Point R Repeater



1	2
3	4
5	6
7	8
9	10
11	12
13	14

Page 9
 () Division
 [] Branch





Whitewater Incident
 August 30, 2017

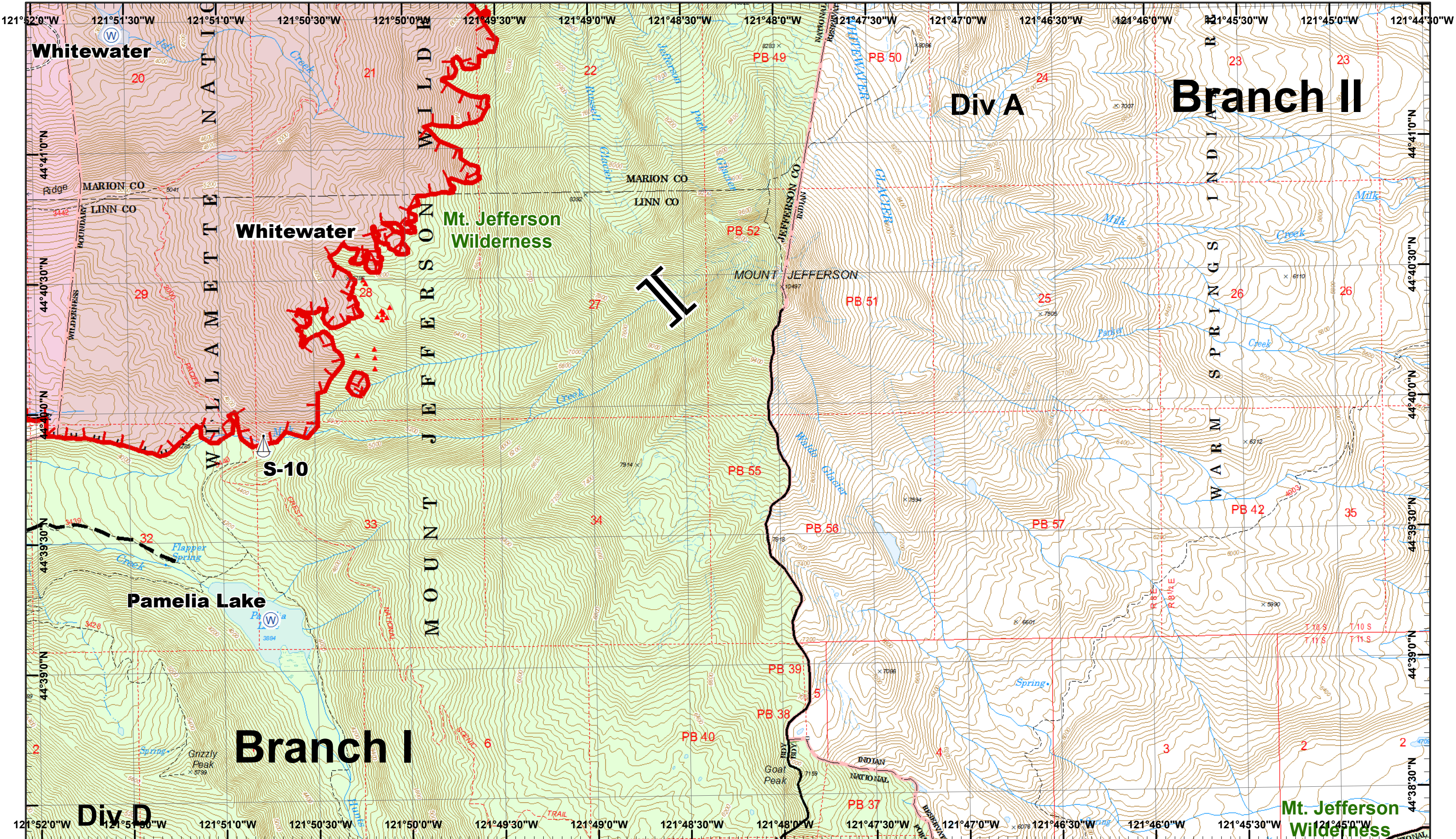
IR 8/29/2017 @ 0316
 Whitewater Fire - 10,278 Acres
 Little Devil Fire - 485 Acres
 French Fire - 2 Acres
 Scorpion Fire - 14 Acres
 Map Created 8/29/2017 8:42:56 PM RDC



- Drop Point
- ⌚ Lookout
- ⊕ Water Source
- Completed
- H - Completed Hand
- - - Planned Fire Line
- Helispot
- ⊗ Completed Dozer
- R - Road as Line
- ⊠ Uncontrolled Fire

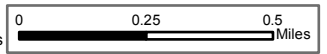


1	2
3	4
5	6
7	8
9	10
11	12
13	14



Whitewater Incident
 August 30, 2017

IR 8/29/2017 @ 0316
 Whitewater Fire - 10,278 Acres
 Little Devil Fire - 485 Acres
 French Fire - 2 Acres
 Scorpion Fire - 14 Acres
 Map Created 8/29/2017 8:43:06 PM RDC



- ▲ IR Heat Source
- ⚓ Sling Site
- ⊙ Water Source
- Completed
- Planned Fire Line
- Uncontrolled Fire
- H Completed Hand



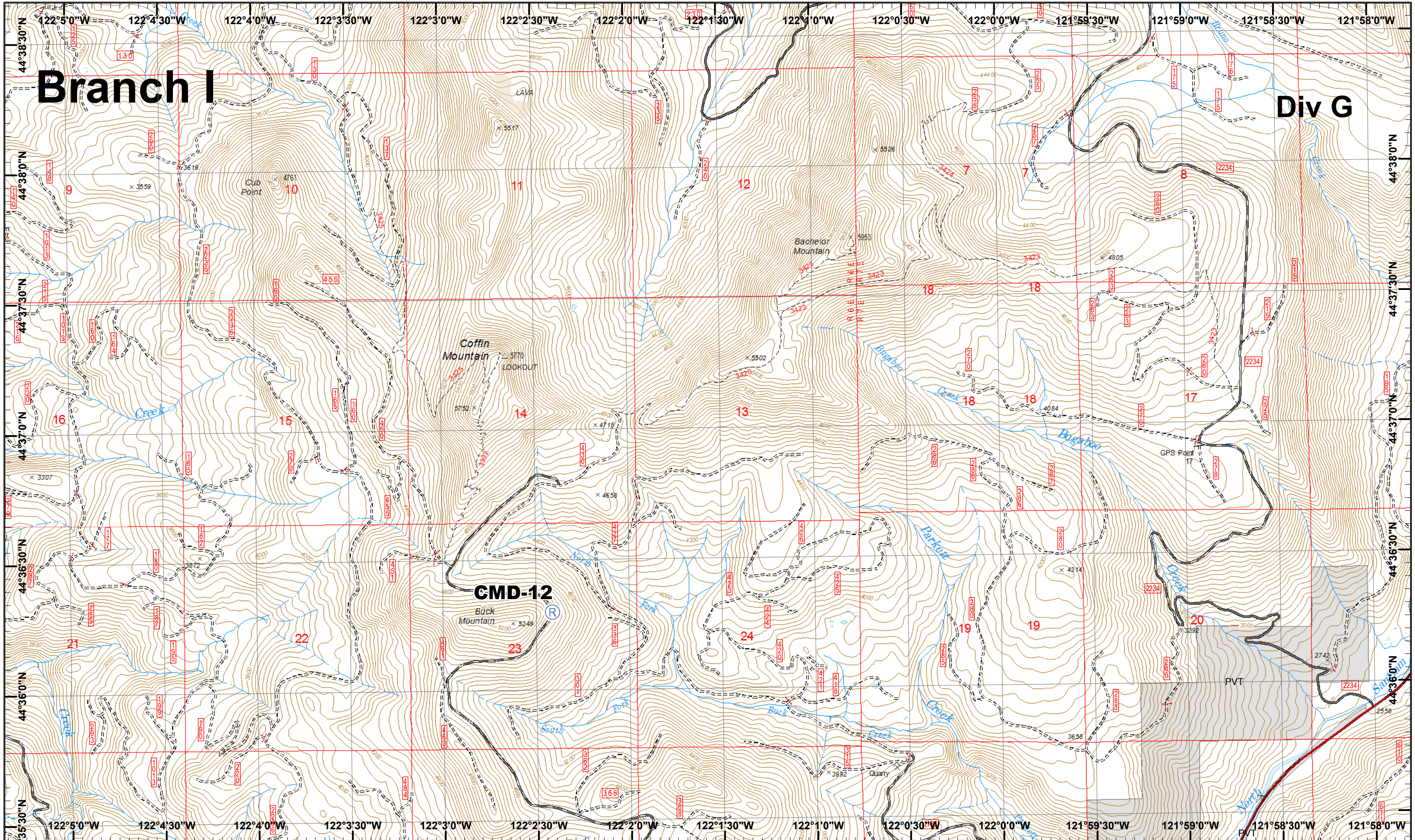
1	2
3	4
6	7
9	10
12	13

Page 11
)(Division
][Branch



Branch I

Div G



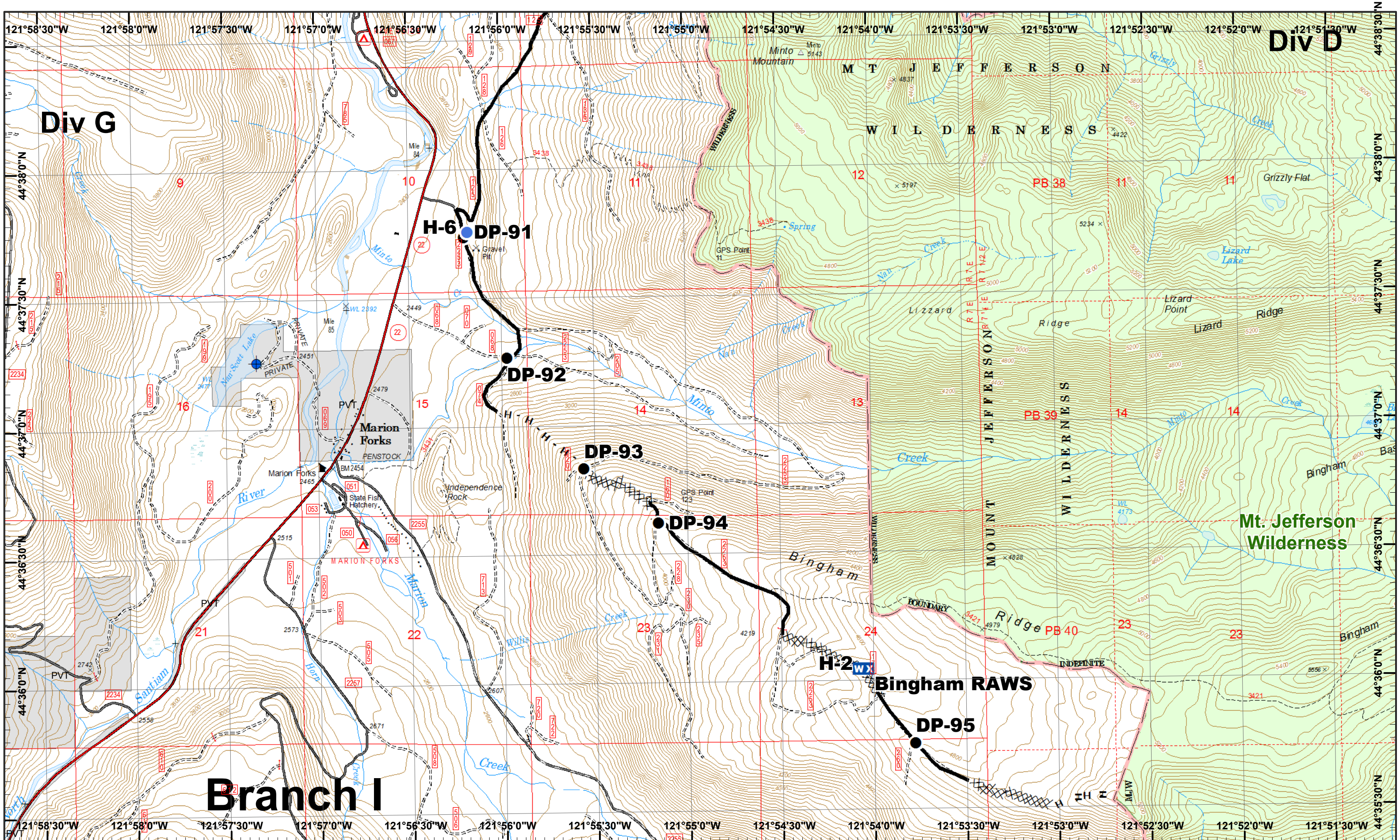
Whitewater Incident
August 30, 2017

IR 8/29/2017 @ 0316
Whitewater Fire - 10,278 Acres
Little Devil Fire - 485 Acres
French Fire - 2 Acres
Scorpion Fire - 14 Acres
Map Created 8/29/2017 8:43:18 PM RDC



1	2
3	4
5	6
7	8
9	10
11	12
13	14





Whitewater Incident
 August 30, 2017

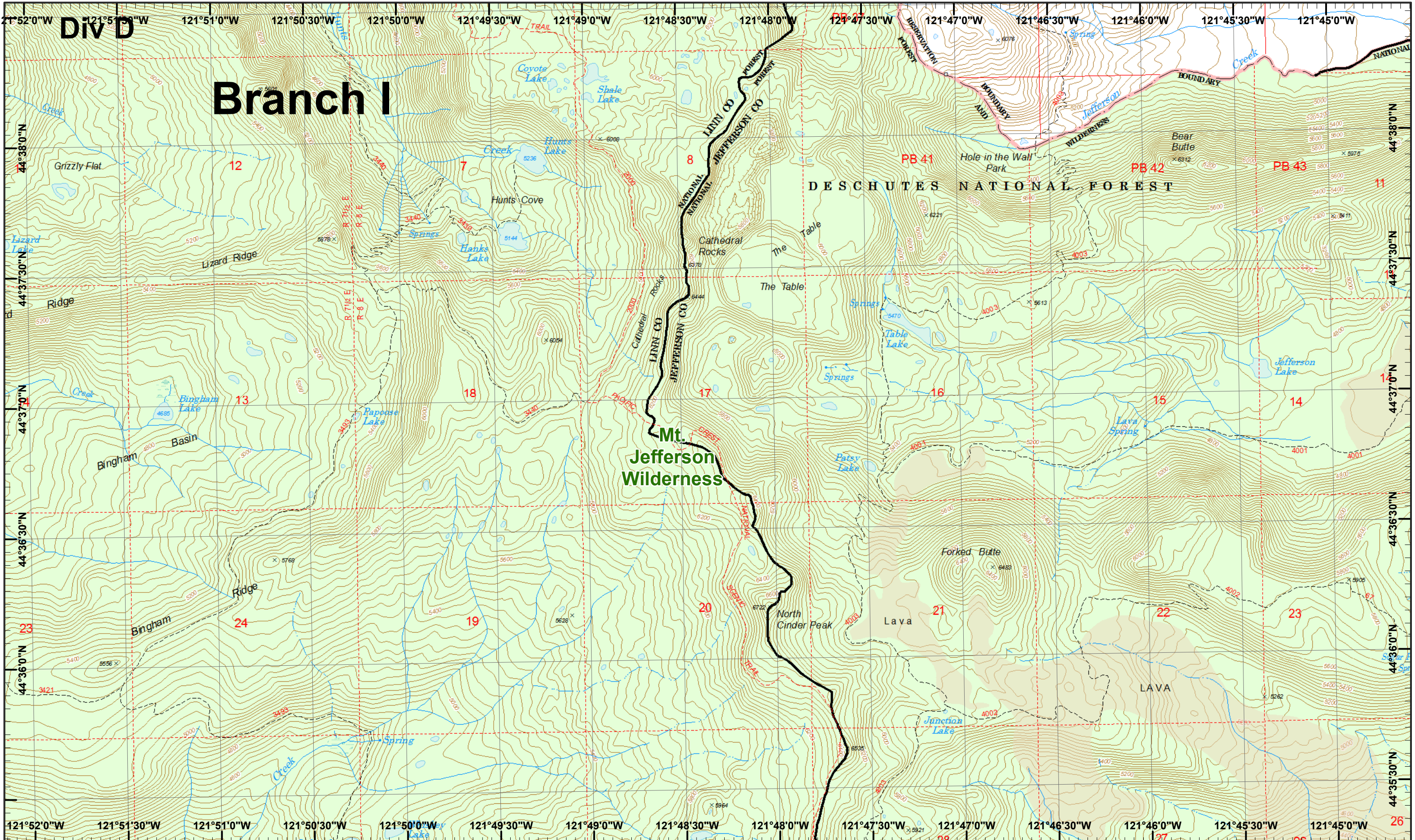
IR 8/29/2017 @ 0316
 Whitewater Fire - 10,278 Acres
 Little Devil Fire - 485 Acres
 French Fire - 2 Acres
 Scorpion Fire - 14 Acres

Map Created 8/29/2017 8:43:28 PM RDC

- Dip Site
- Helispot
- Completed
- H - Completed Hand
- Drop Point
- Mobile Weather
- Completed Dozer



1	2
3	4
5	6
7	8
9	10
11	12
13	14

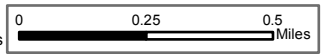


DIV D

Branch I

Whitewater Incident
 August 30, 2017

IR 8/29/2017 @ 0316
 Whitewater Fire - 10,278 Acres
 Little Devil Fire - 485 Acres
 French Fire - 2 Acres
 Scorpion Fire - 14 Acres



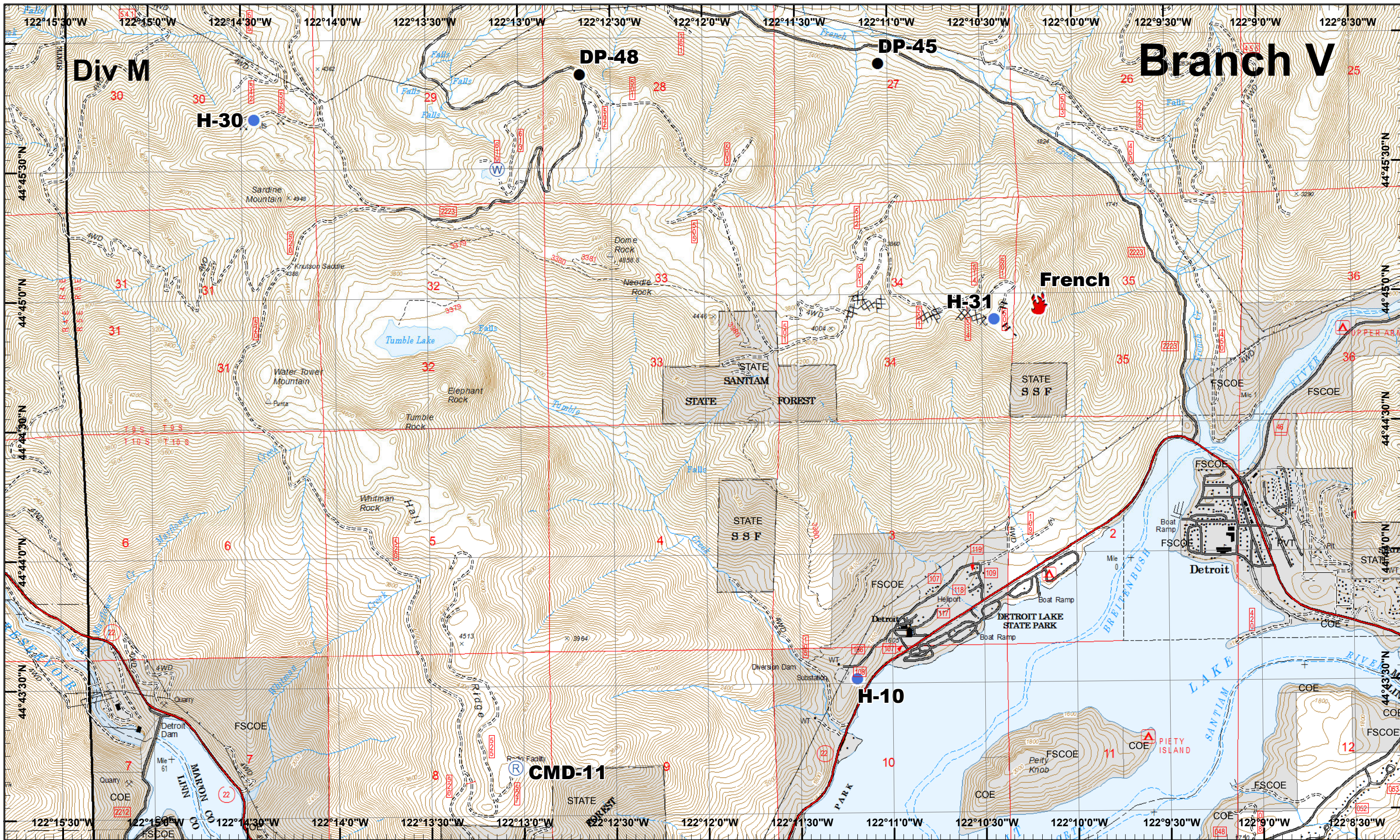
Map Created 8/29/2017 8:43:37 PM RDC



1	2
3	4
6	7
9	10
12	13

Page 14
 (X) Division
 (I) Branch





Whitewater Incident
 August 30, 2017

IR 8/29/2017 @ 0316
 Whitewater Fire - 10,278 Acres
 Little Devil Fire - 485 Acres
 French Fire - 2 Acres
 Scorpion Fire - 14 Acres
 Map Created 8/29/2017 8:43:49 PM RDC



- Drop Point
- 🔥 Fire Location
- Helispot
- Ⓡ Repeater
- Ⓜ Water Source
- XXXX Completed Dozer
- H - Completed Hand



1	2
3	4
5	6
7	8
9	10
11	12
13	14