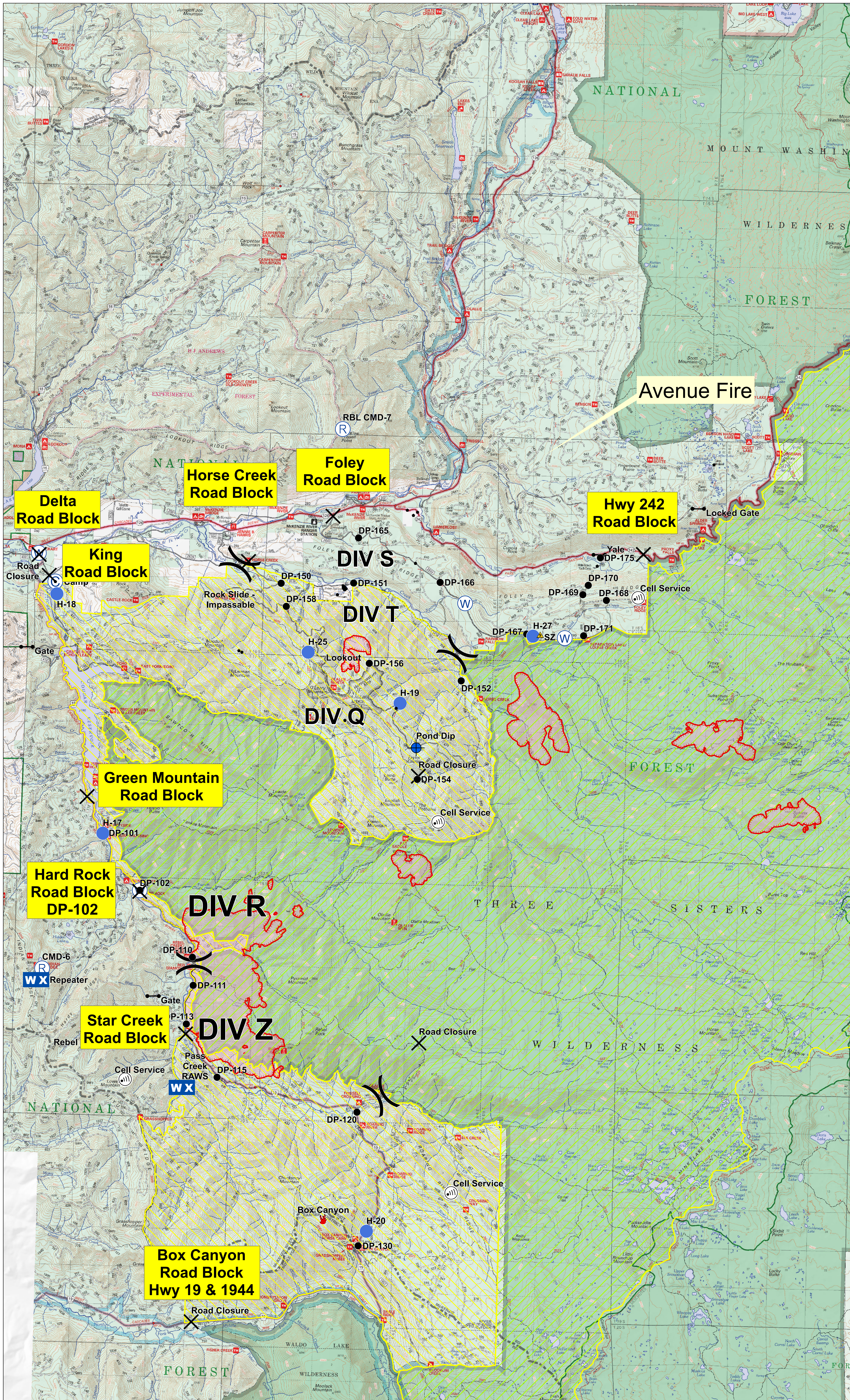


Horse Creek Complex, Rebel and Vicinity Fires Area and Road Closure Map

OR-WIF
August 27, 2017



- ◆ Structures
- ⊙ Camp
- ✕ Closure
- ◆ Dip Site
- Drop Point
- 🔥 Fire Location
- ⚓ Gate
- Helispot
- Ⓜ Internet Access
- WX Mobile Weather Unit
- Ⓡ Repeater
- ⚠ Safety Zone
- Ⓜ Water Source
- Ⓜ Value at Risk
- Other
- ⎓ Division Break
- 🔴 Uncontrolled Fire Edge
- Completed Line
- ⚡ Completed Dozer Line
- H-H-H Completed Hand Line
- ⋯ Road as Completed Line
- ✕ ✕ Proposed Dozer Line
- Other
- 🟡 ThreeSistersWildernessClosureArea
- 🟡 RebelFireClosureArea
- 🔴 Fire Area

