

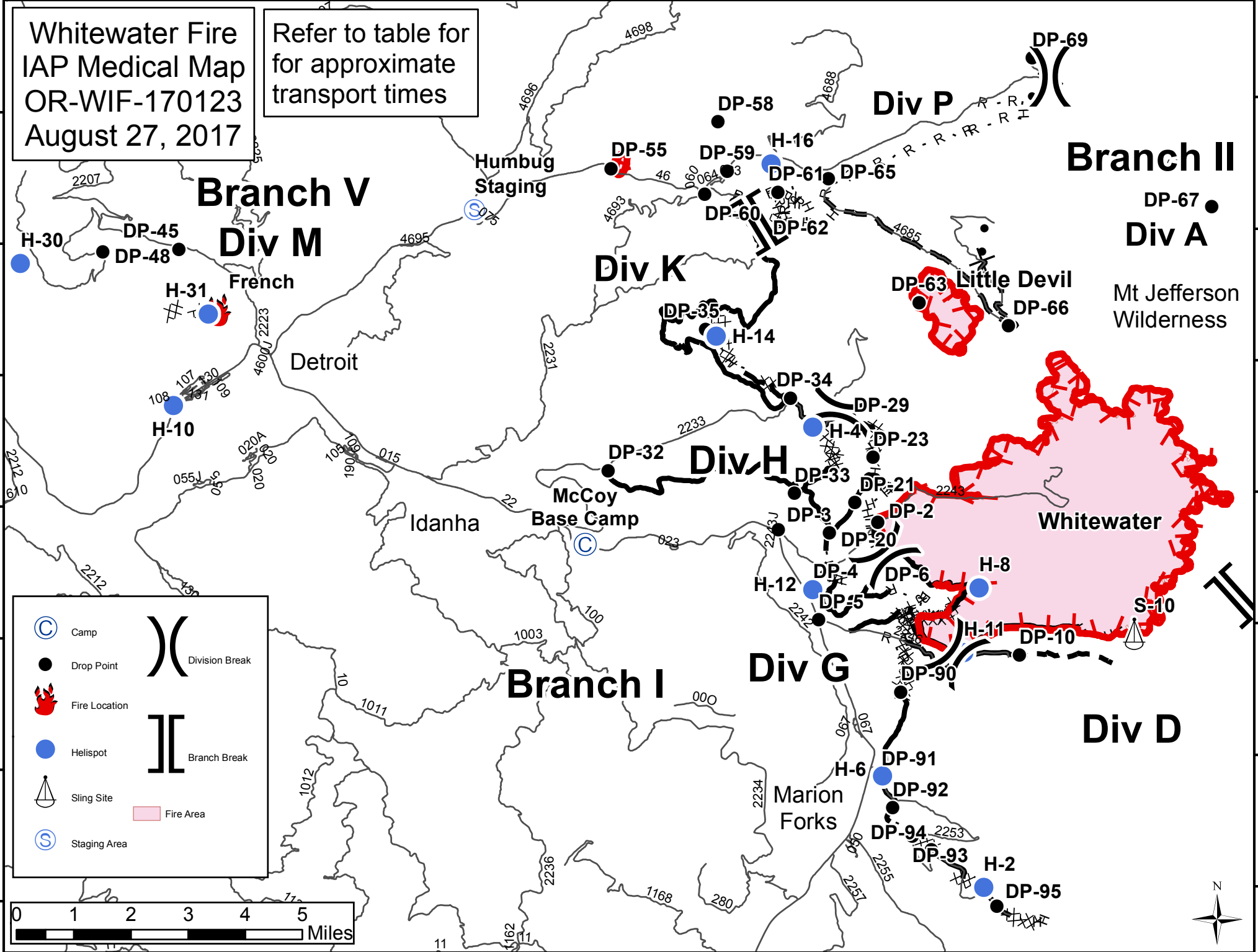
122°14'0"W 122°12'0"W 122°10'0"W 122°8'0"W 122°6'0"W 122°4'0"W 122°2'0"W 122°0'0"W 121°58'0"W 121°56'0"W 121°54'0"W 121°52'0"W 121°50'0"W

Whitewater Fire
IAP Medical Map
OR-WIF-170123
August 27, 2017

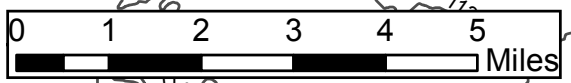
Refer to table for
for approximate
transport times

44°48'0"N
44°46'0"N
44°44'0"N
44°42'0"N
44°40'0"N
44°38'0"N
44°36'0"N

44°48'0"N
44°46'0"N
44°44'0"N
44°42'0"N
44°40'0"N
44°38'0"N
44°36'0"N



- Camp
- Drop Point
- Fire Location
- Helispot
- Sling Site
- Staging Area
- Division Break
- Branch Break
- Fire Area



122°14'0"W 122°12'0"W 122°10'0"W 122°8'0"W 122°6'0"W 122°4'0"W 122°2'0"W 122°0'0"W 121°58'0"W 121°56'0"W 121°54'0"W 121°52'0"W 121°50'0"W