

















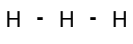




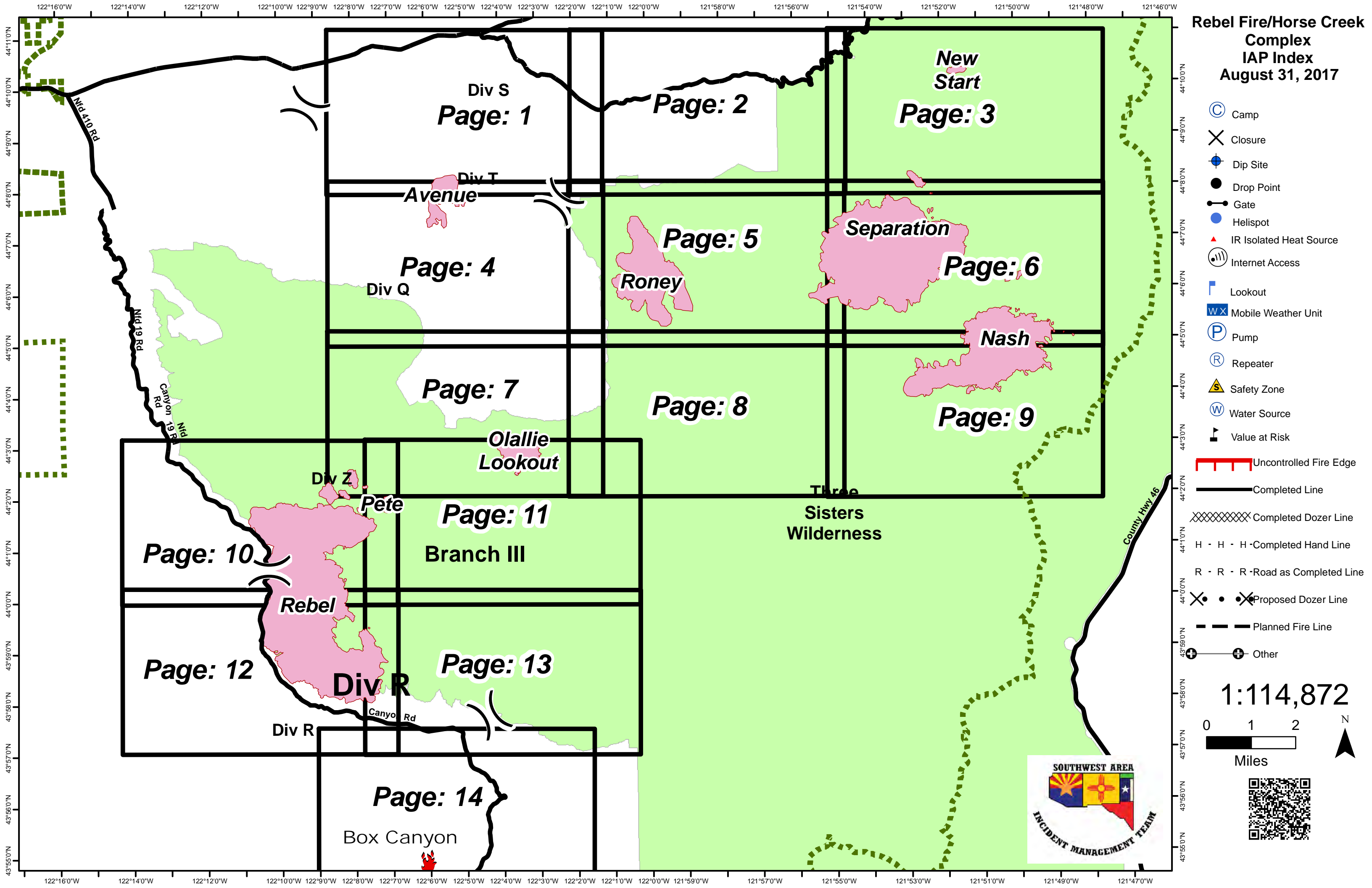
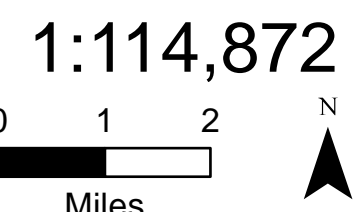


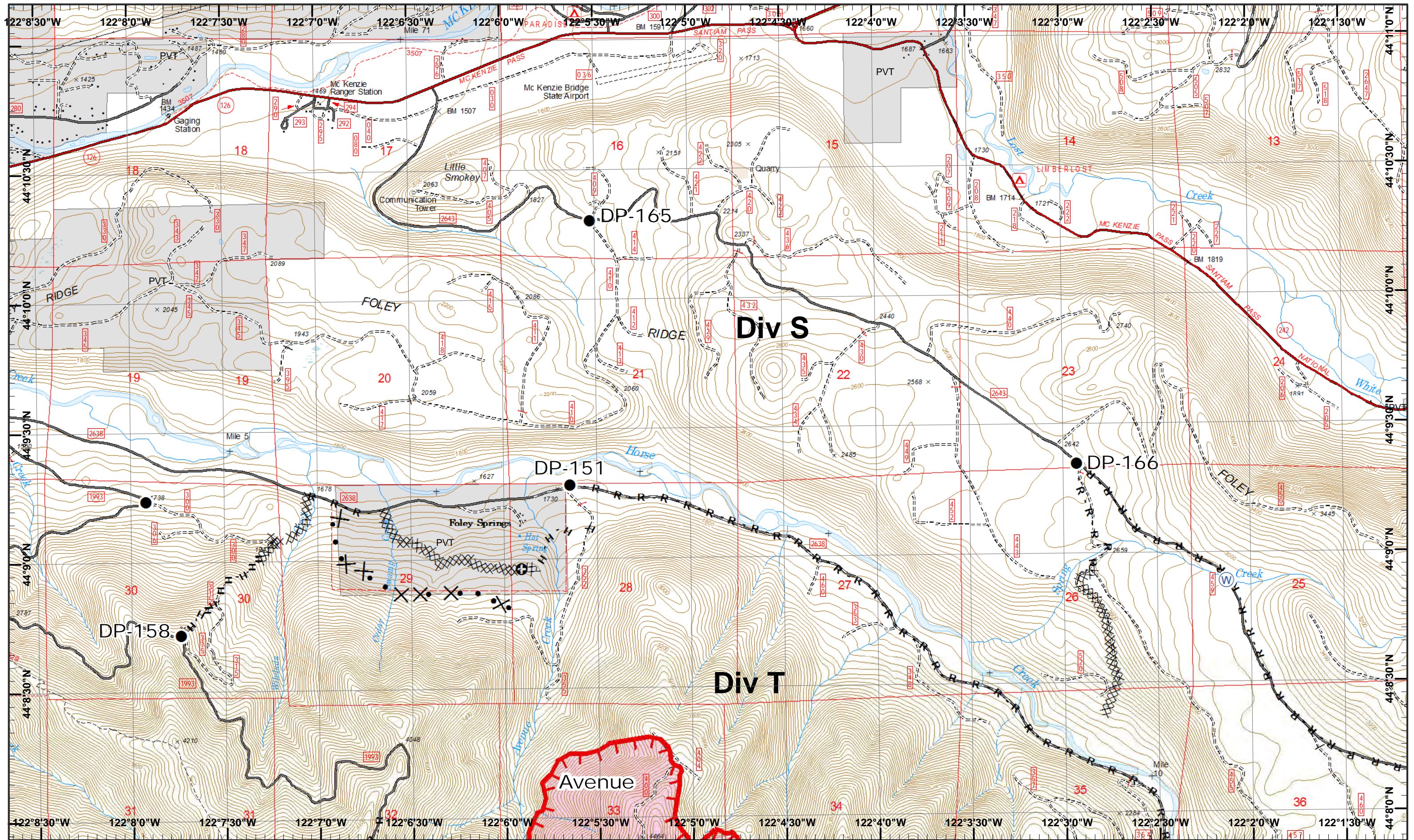
# Rebel Fire/Horse Creek Complex IAP Index August 31, 2017

-  Camp
-  Closure
-  Dip Site
-  Drop Point
-  Gate
-  Helispot
-  IR Isolated Heat Source
-  Internet Access
-  Lookout
-  Mobile Weather Unit
-  Pump
-  Repeater
-  Safety Zone
-  Water Source
-  Value at Risk

-  Uncontrolled Fire Edge
-  Completed Line
-  Completed Dozer Line
-  Completed Hand Line
-  Road as Completed Line
-  Proposed Dozer Line
-  Planned Fire Line
-  Other

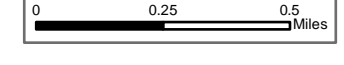






Rebel, Pete  
 Horse Creek  
 August 31, 2017

IR 8/29/2017 @ 2144  
 Rebel Fire - 5,547 Acres  
 Pete Fire - 45 Acres  
 Chaille Lookout Fire - 384 Acres  
 Roney Fire - 1,380 Acres  
 Separation Fire - 3,884 Acres  
 Avenue Fire - 363 Acres  
 Nash Fire - 2,250 Acres

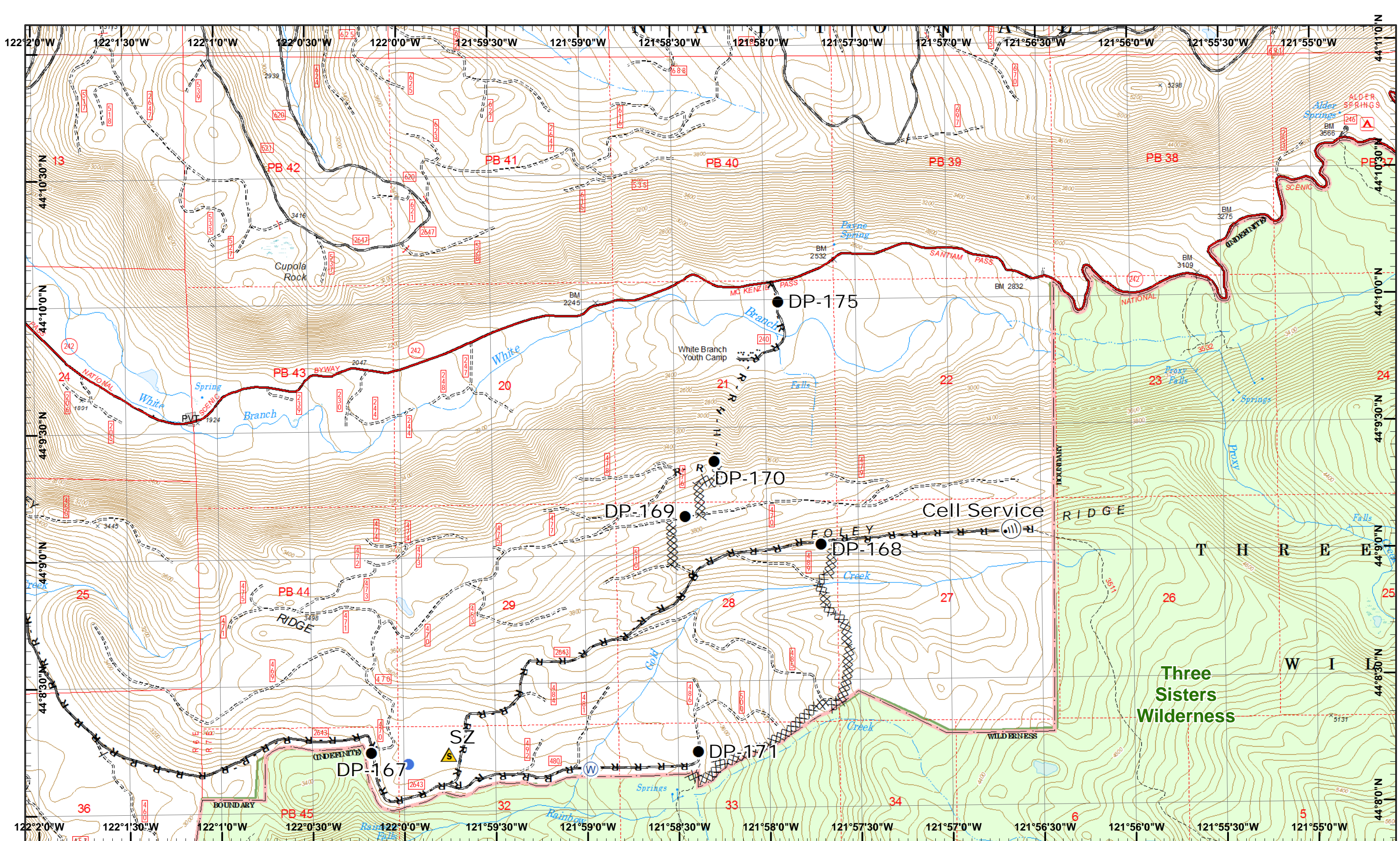


- Drop Point
- ⊕ Water Source
- XXXX Completed Dozer R
- Road as Line
- Proposed Dozer
- ⊕ Other
- Uncontrolled Fire
- H Completed Hand



1	2	3
4	5	6
7	8	9
10	11	12
13	14	15

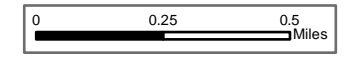




**Rebel, Pete Horse Creek**  
 August 31, 2017

IR 8/29/2017 @ 2144  
 Rebel Fire - 5,547 Acres  
 Pete Fire - 45 Acres  
 Challe Lookout Fire - 384 Acres  
 Roney Fire - 1,380 Acres  
 Separation Fire - 3,884 Acres  
 Avenue Fire - 363 Acres  
 Nash Fire - 2,250 Acres

Map Created 8/30/2017 7:48:00 PM RDC



- North
- Drop Point
- Internet Access
- Safety Zone
- Water Source
- Completed Dozer R - Road as Line
- Helispot
- Completed Hand

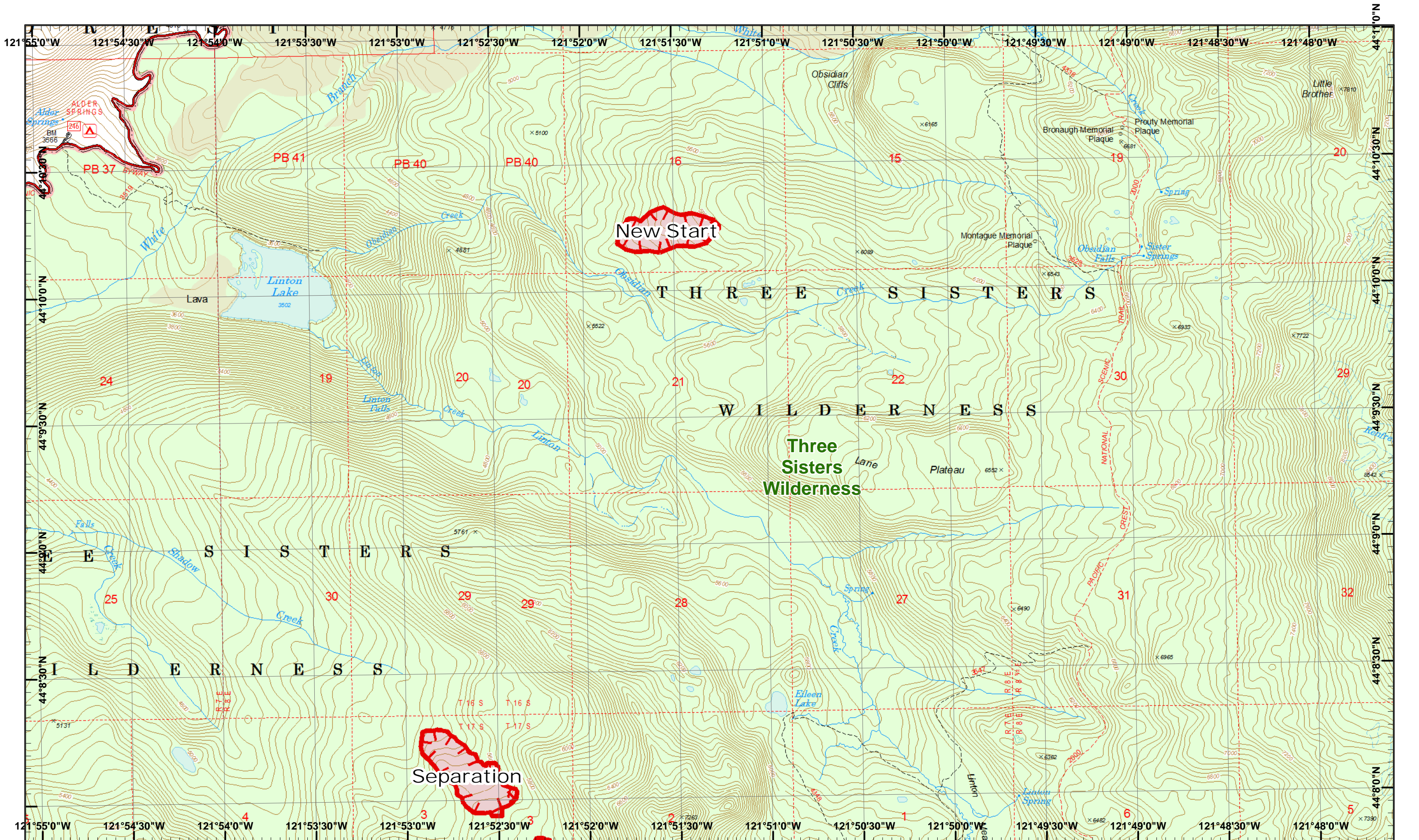


1	2	3
4	5	6
7	8	9
10	11	12
13	14	

Page 2  
 )( Division  
 )( Branch







Rebel, Pete  
Horse Creek  
August 31, 2017

IR 8/29/2017 @ 2144  
Rebel Fire - 5,547 Acres  
Pete Fire - 45 Acres  
Chalio Lookout Fire - 384 Acres  
Roney Fire - 1,380 Acres  
Separation Fire - 3,884 Acres  
Avenue Fire - 363 Acres  
Nash Fire - 2,250 Acres

0 0.25 0.5 Miles

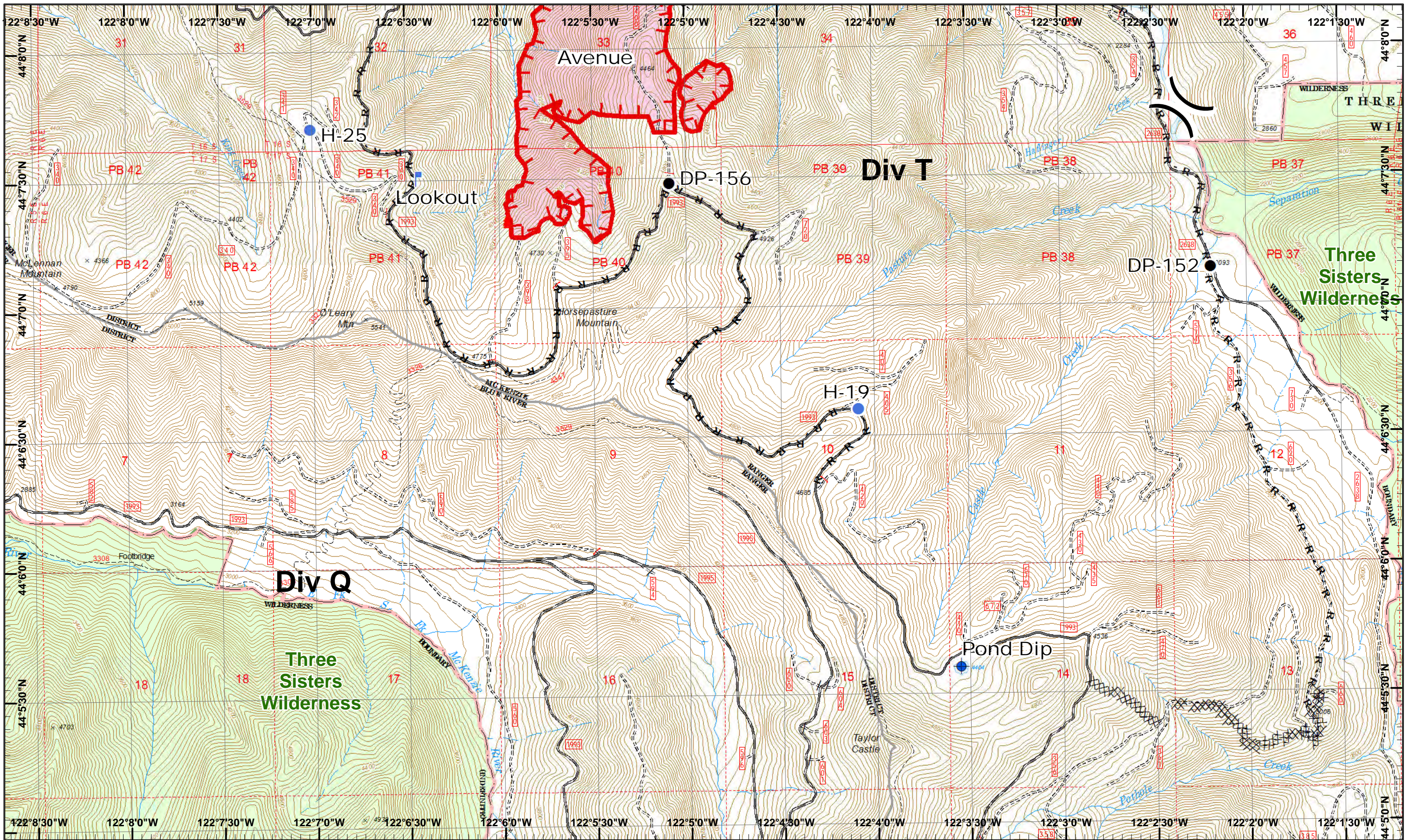


Uncontrolled Fire



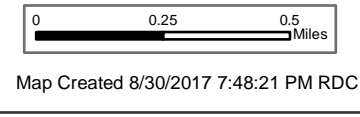
1	2	3
4	5	6
7	8	9
10	11	12
13	14	





Rebel, Pete  
Horse Creek  
August 31, 2017

IR 8/29/2017 @ 2144  
Rebel Fire - 5,547 Acres  
Pete Fire - 45 Acres  
Challe Lookout Fire - 384 Acres  
Roney Fire - 1,380 Acres  
Separation Fire - 3,884 Acres  
Avenue Fire - 363 Acres  
Nash Fire - 2,250 Acres

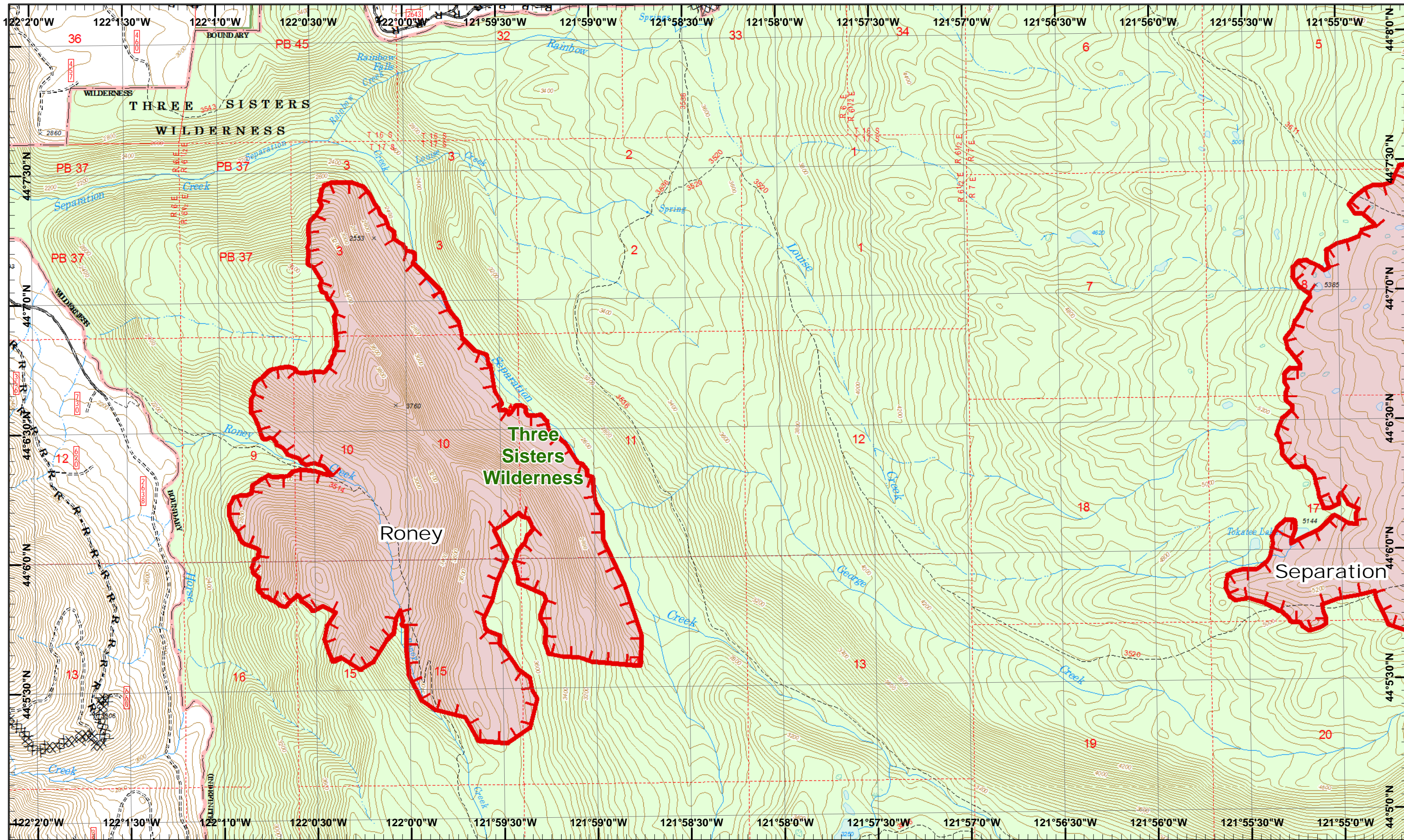


- Dip Site
- Helispot
- Lookout
- Completed Dozer R - Road as Line
- Drop Point
- IR Heat Source
- Uncontrolled Fire

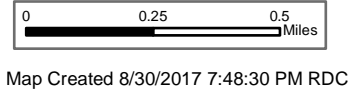


1	2	3
4	5	6
7	8	9
10	11	12
13	14	15





**Rebel, Pete Horse Creek**  
 August 31, 2017  
 IR 8/29/2017 @ 2144  
 Rebel Fire - 5,547 Acres  
 Pete Fire - 45 Acres  
 Ollie Lookout Fire - 384 Acres  
 Roney Fire - 1,380 Acres  
 Separation Fire - 3,884 Acres  
 Avenue Fire - 363 Acres  
 Nash Fire - 2,250 Acres



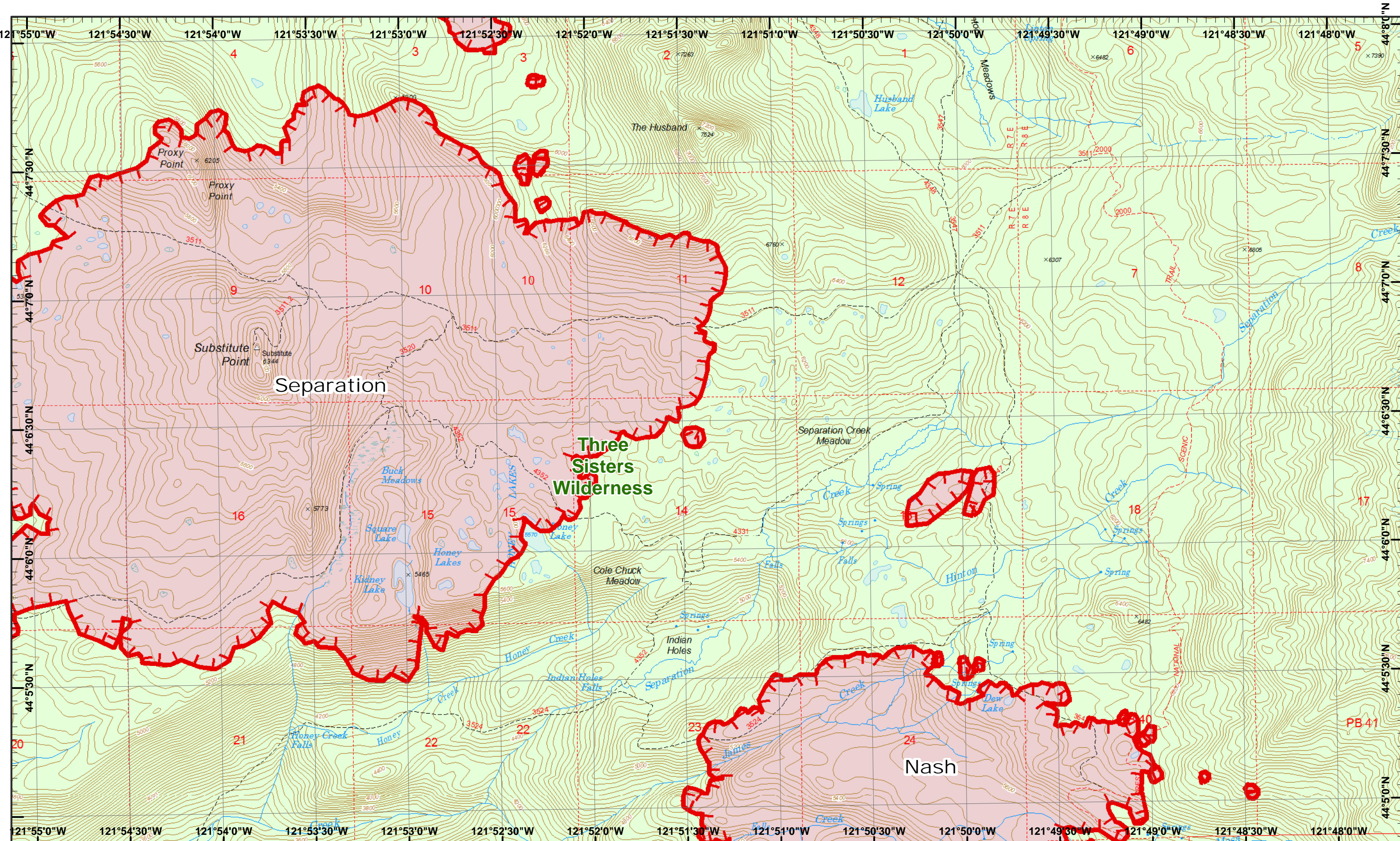
IR Heat Source Uncontrolled Fire Road as Line  
 Water Source Completed Dozer



1	2	3
4	5	6
7	8	9
10	11	12
13	14	

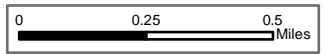






Rebel, Pete  
 Horse Creek  
 August 31, 2017

IR 8/29/2017 @ 2144  
 Rebel Fire - 5,547 Acres  
 Pete Fire - 45 Acres  
 Challe Lookout Fire - 384 Acres  
 Roney Fire - 1,380 Acres  
 Separation Fire - 3,884 Acres  
 Avenue Fire - 363 Acres  
 Nash Fire - 2,250 Acres



Uncontrolled Fire

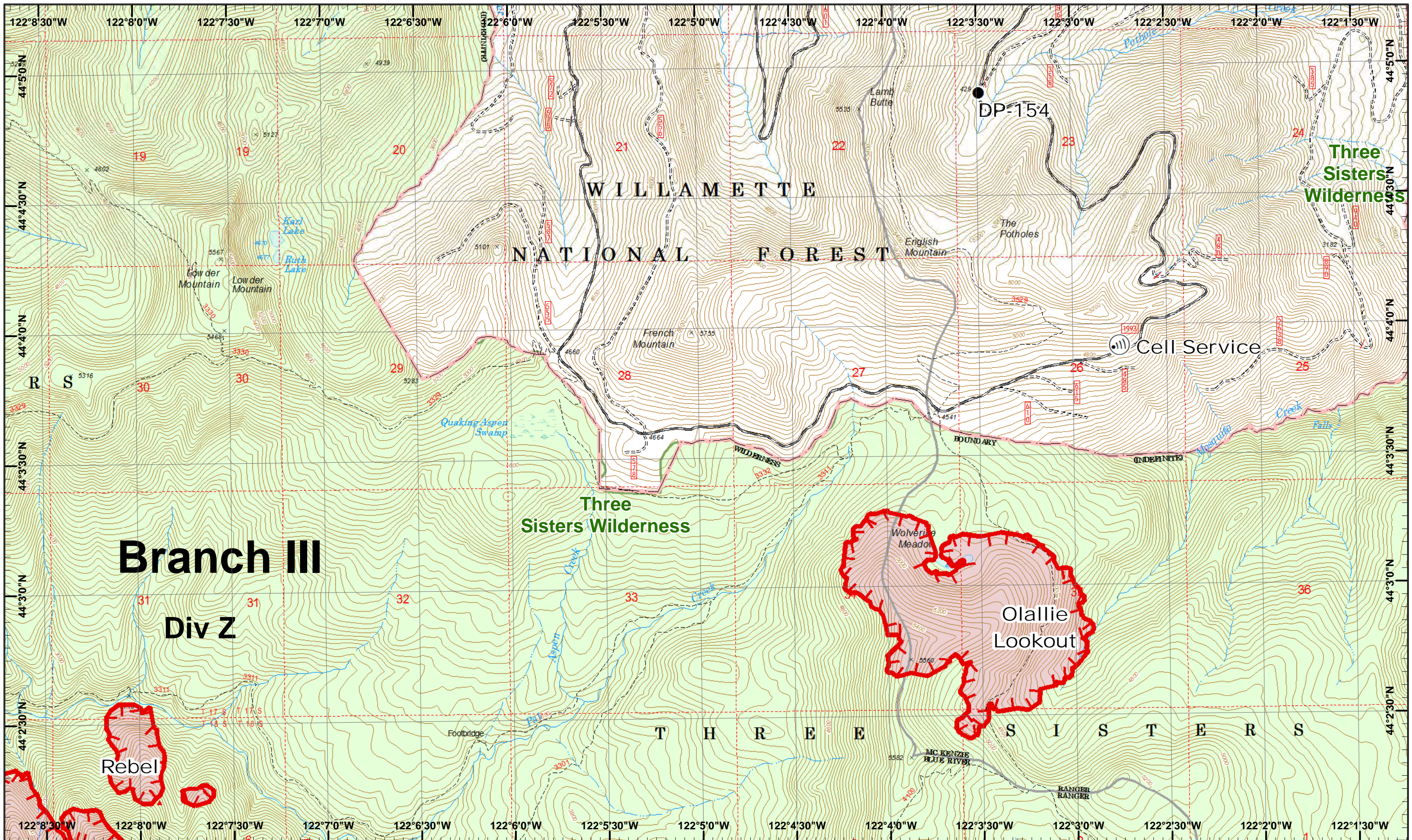


1	2	3
4	5	6
7	8	9
10	11	12
13	14	

Page 6  
 )( Division  
 )( Branch

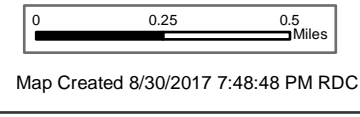






**Rebel, Pete Horse Creek**  
 August 31, 2017

IR 8/29/2017 @ 2144  
 Rebel Fire - 5,547 Acres  
 Pete Fire - 45 Acres  
 Olallie Lookout Fire - 384 Acres  
 Roney Fire - 1,380 Acres  
 Separation Fire - 3,884 Acres  
 Avenue Fire - 363 Acres  
 Nash Fire - 2,250 Acres



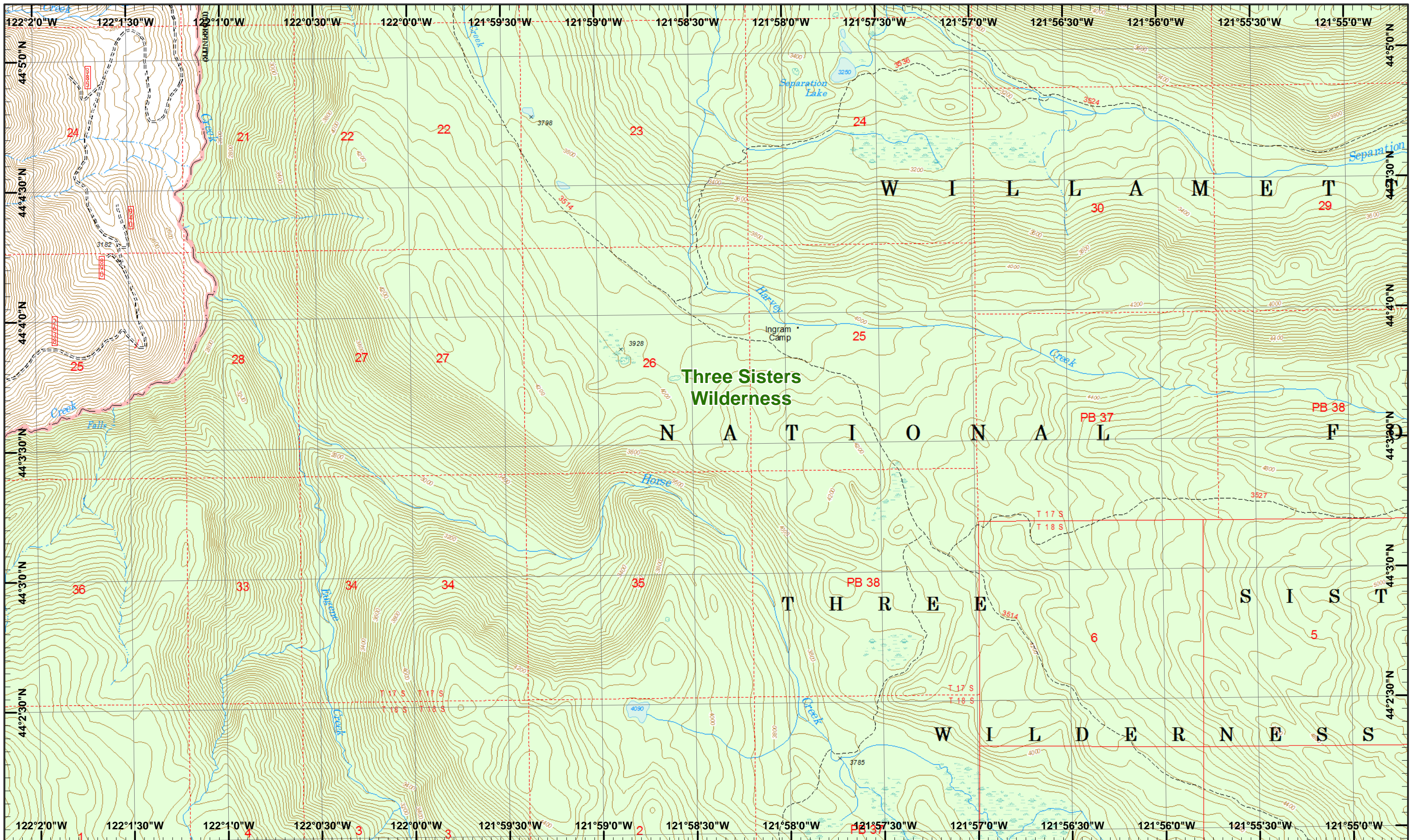
- North
- Drop Point
- Internet Access
- Uncontrolled Fire
- IR Heat Source



1	2	3
4	5	6
7	8	9
10	11	12
13	14	15

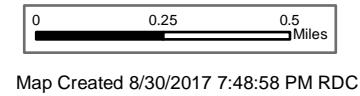






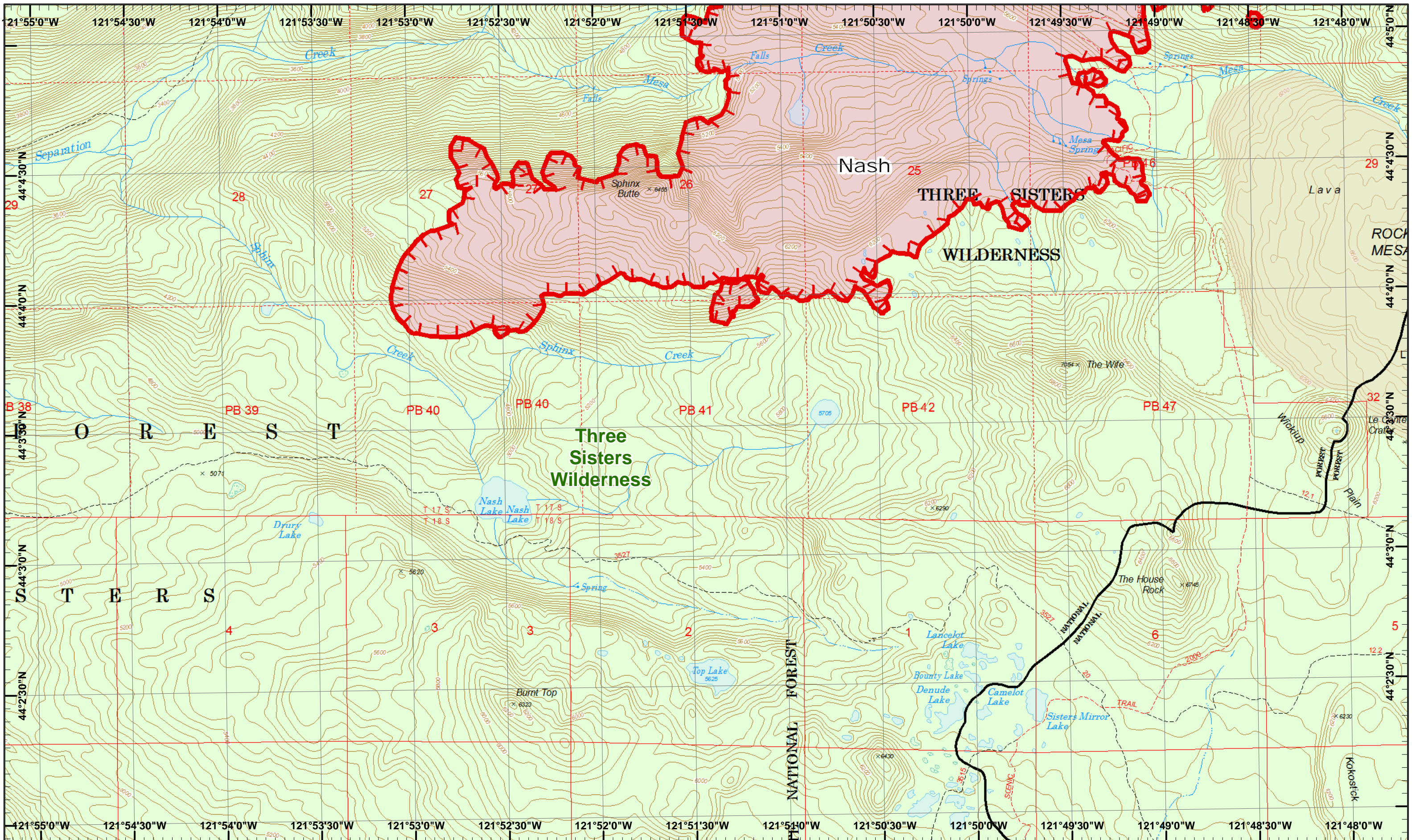
**Rebel, Pete  
Horse Creek**  
August 31, 2017

IR 8/29/2017 @ 2144  
 Rebel Fire - 5,547 Acres  
 Pete Fire - 45 Acres  
 Challe Lookout Fire - 384 Acres  
 Roney Fire - 1,380 Acres  
 Separation Fire - 3,884 Acres  
 Avenue Fire - 363 Acres  
 Nash Fire - 2,250 Acres



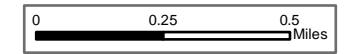
1	2	3
4	5	6
7	8	9
10	11	12
13	14	





Rebel, Pete  
 Horse Creek  
 August 31, 2017

IR 8/29/2017 @ 2144  
 Rebel Fire - 5,547 Acres  
 Pete Fire - 45 Acres  
 Challe Lookout Fire - 384 Acres  
 Roney Fire - 1,380 Acres  
 Separation Fire - 3,884 Acres  
 Avenue Fire - 363 Acres  
 Nash Fire - 2,250 Acres



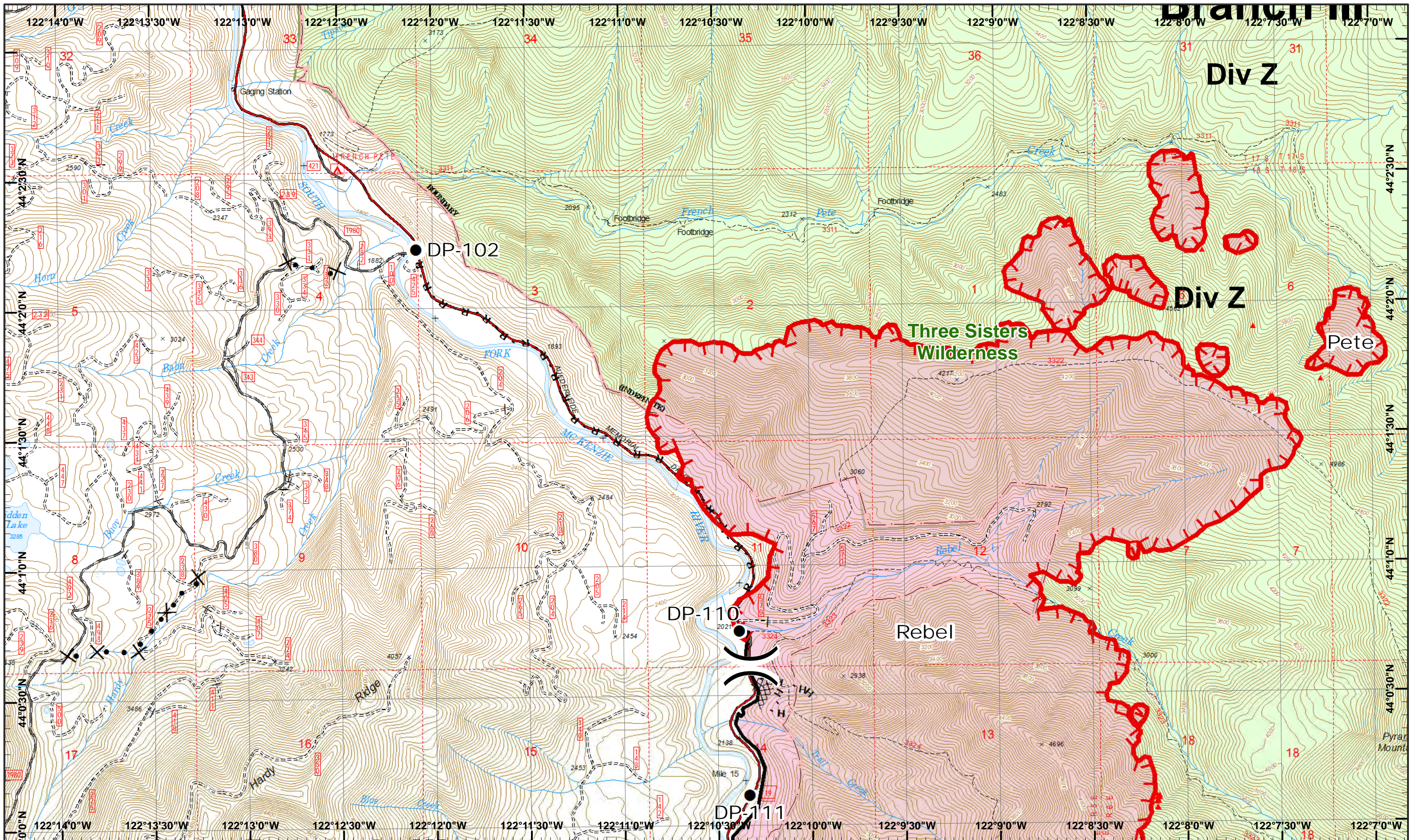
Uncontrolled Fire



1	2	3
4	5	6
7	8	9
10	11	12
13	14	15

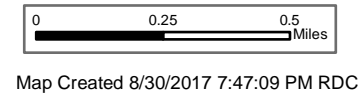






Rebel, Pete  
 Horse Creek  
 August 31, 2017

IR 8/29/2017 @ 2144  
 Rebel Fire - 5,547 Acres  
 Pete Fire - 45 Acres  
 Charlie Lookout Fire - 384 Acres  
 Roney Fire - 1,380 Acres  
 Separation Fire - 3,884 Acres  
 Avenue Fire - 363 Acres  
 Nash Fire - 2,250 Acres



- Drop Point
- ▲ IR Heat Source
- Ⓜ Water Source
- Completed
- ⓧ Completed Dozer
- Ⓜ Completed Hand
- ⓧ Proposed Dozer
- Road as Line
- ▭ Uncontrolled Fire

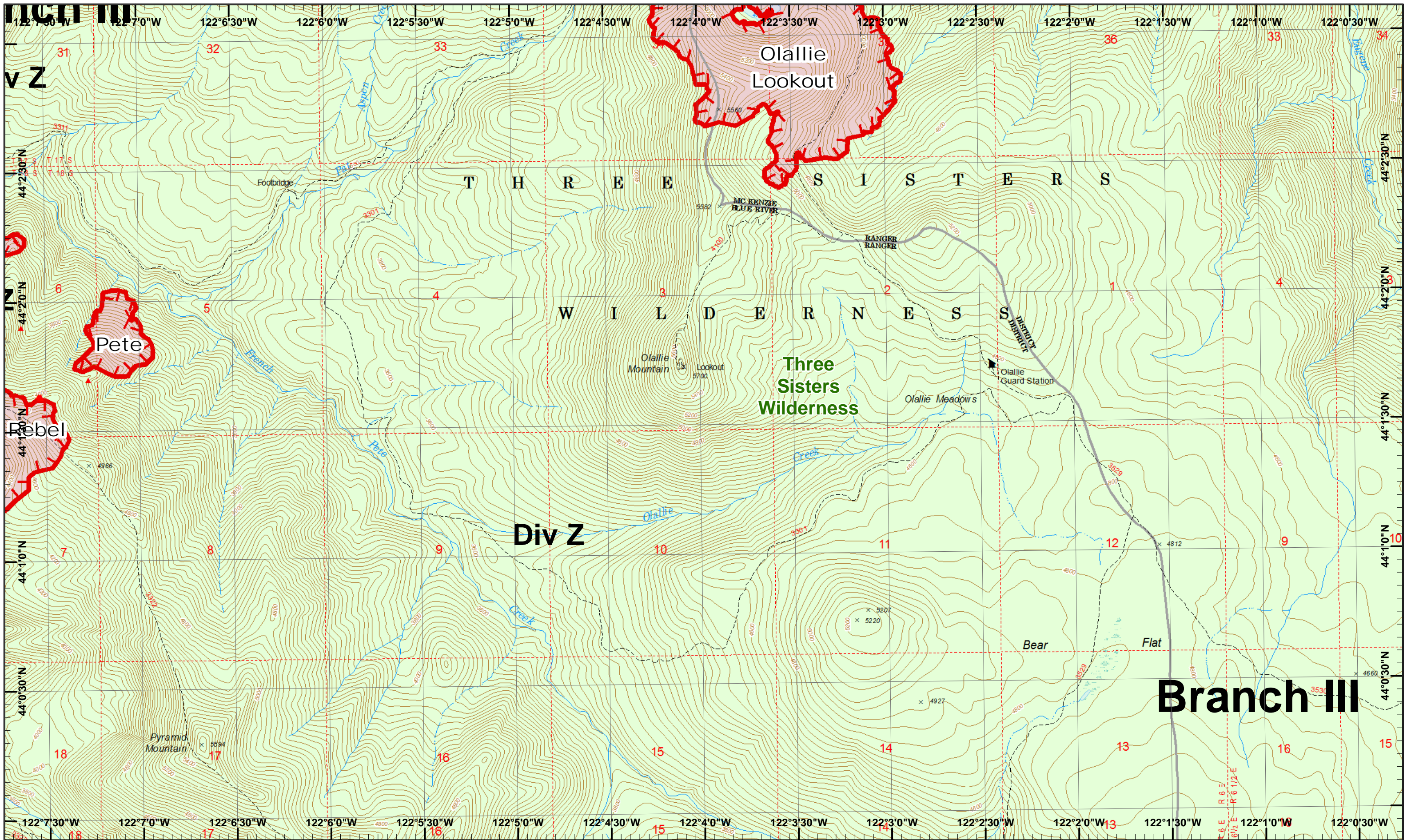


1	2	3
4	5	6
7	8	9
10	11	12
13	14	15

Page 10  
 )( Division  
 )( Branch



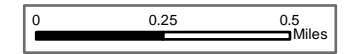




Rebel, Pete  
 Horse Creek  
 August 31, 2017

IR 8/29/2017 @ 2144  
 Rebel Fire - 5,547 Acres  
 Pete Fire - 45 Acres  
 Olallie Lookout Fire - 384 Acres  
 Roney Fire - 1,380 Acres  
 Separation Fire - 3,884 Acres  
 Avenue Fire - 363 Acres  
 Nash Fire - 2,250 Acres

 IR Heat Source  
 Uncontrolled Fire



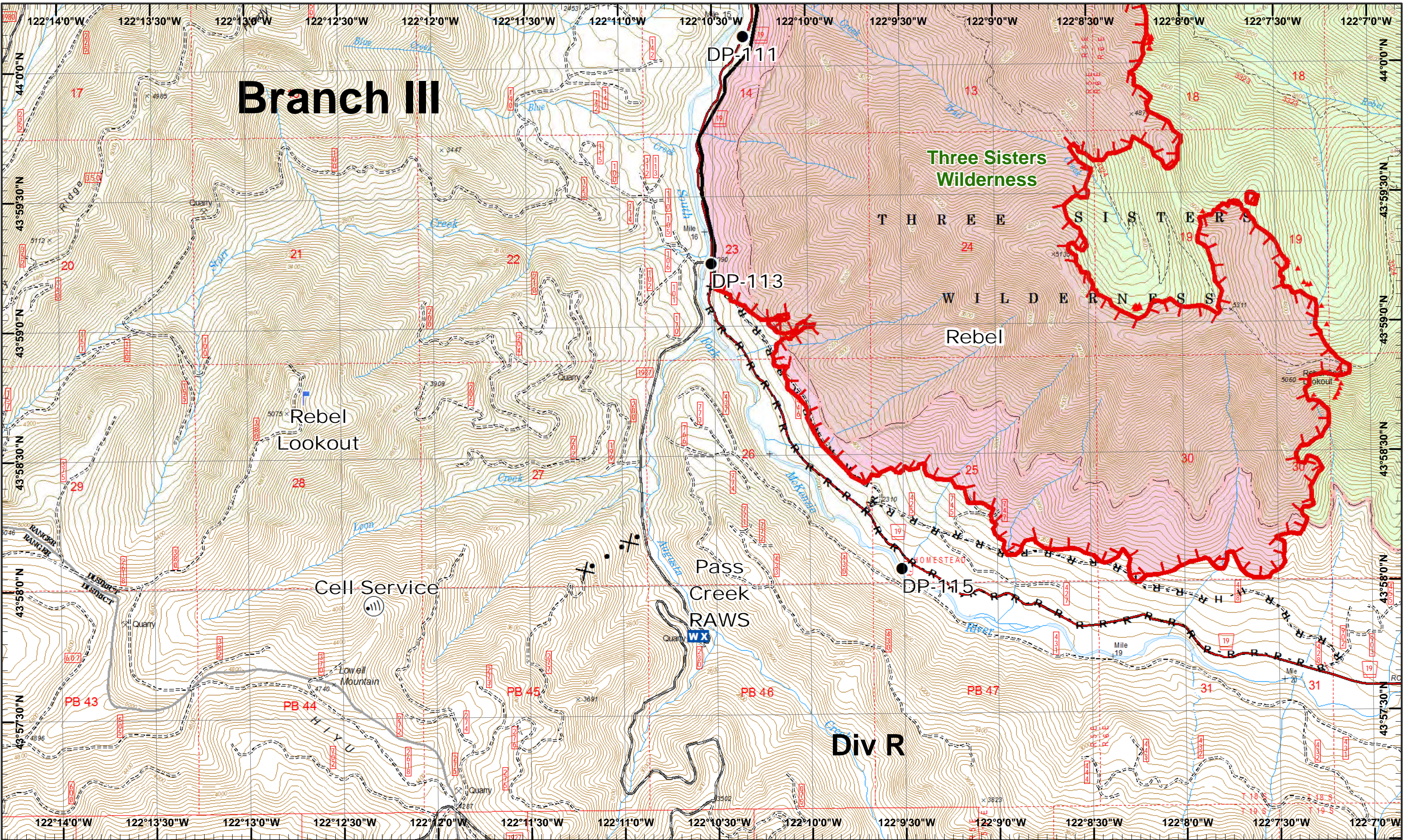
Map Created 8/30/2017 7:47:18 PM RDC



1	2	3
4	5	6
7	8	9
10	11	12
13	14	15







**Rebel, Pete Horse Creek**  
 August 31, 2017  
 IR 8/29/2017 @ 2144  
 Rebel Fire - 5,547 Acres  
 Pete Fire - 45 Acres  
 Chaille Lookout Fire - 384 Acres  
 Roney Fire - 1,380 Acres  
 Separation Fire - 3,884 Acres  
 Avenue Fire - 363 Acres  
 Nash Fire - 2,250 Acres

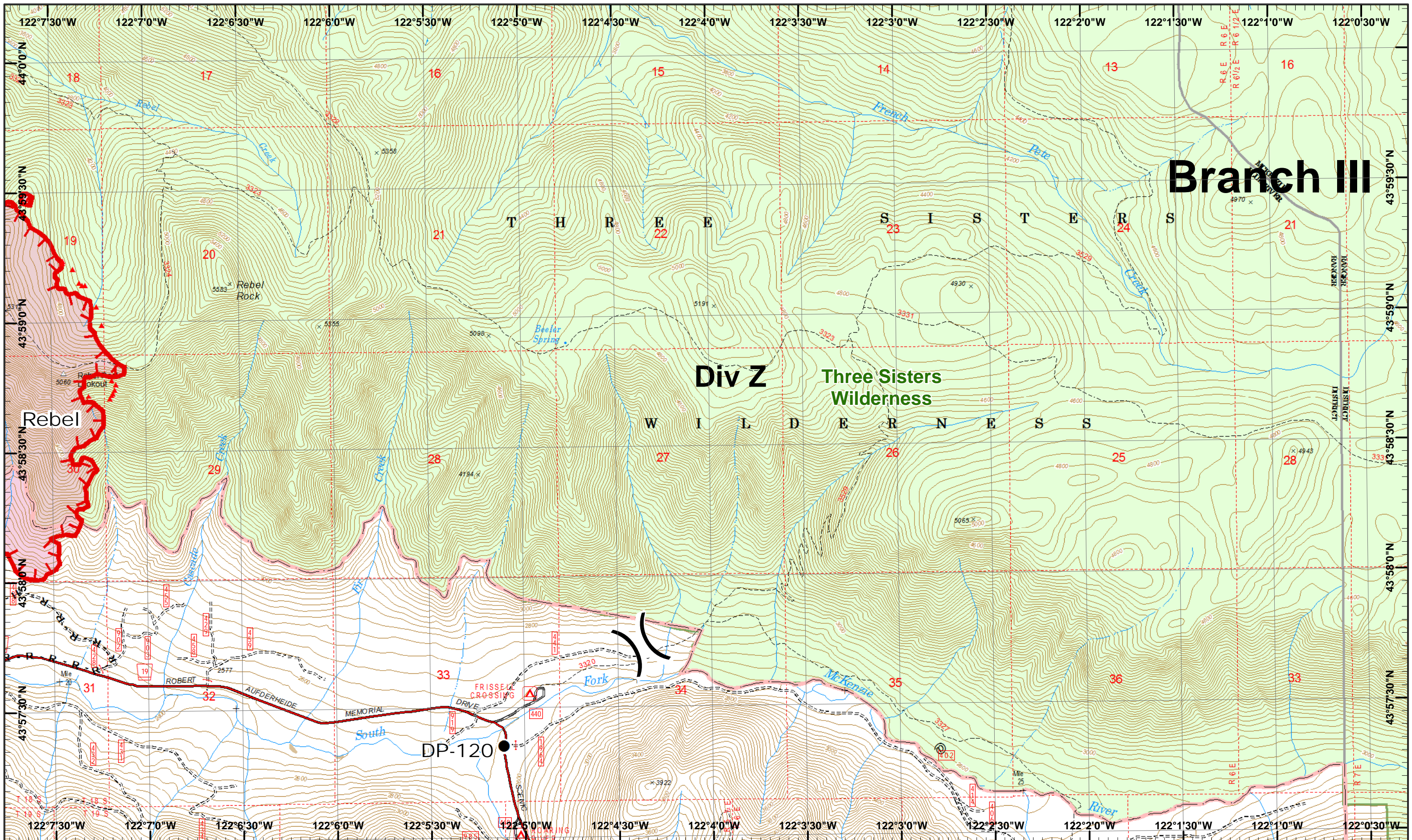
0 0.25 0.5 Miles  
 Map Created 8/30/2017 7:47:28 PM RDC

		Drop Point		Internet Access		Lookout		Uncontrolled Fire		Completed Hand		Proposed Dozer
	IR Heat Source		Mobile Weather		Completed		R - Road as Line					



1	2	3
4	5	6
7	8	9
10	11	12
13	14	15





**Branch III**

**Div Z**

**Three Sisters Wilderness**

**Rebel, Pete Horse Creek**  
August 31, 2017

IR 8/29/2017 @ 2144  
 Rebel Fire - 5,547 Acres  
 Pete Fire - 45 Acres  
 Ollie Lookout Fire - 384 Acres  
 Roney Fire - 1,380 Acres  
 Separation Fire - 3,884 Acres  
 Avenue Fire - 363 Acres  
 Nash Fire - 2,250 Acres



● Drop Point

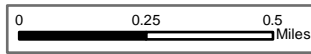
▲ IR Heat Source

▭ Uncontrolled Fire

- Road as Line

H - Completed Hand

Map Created 8/30/2017 7:47:38 PM RDC

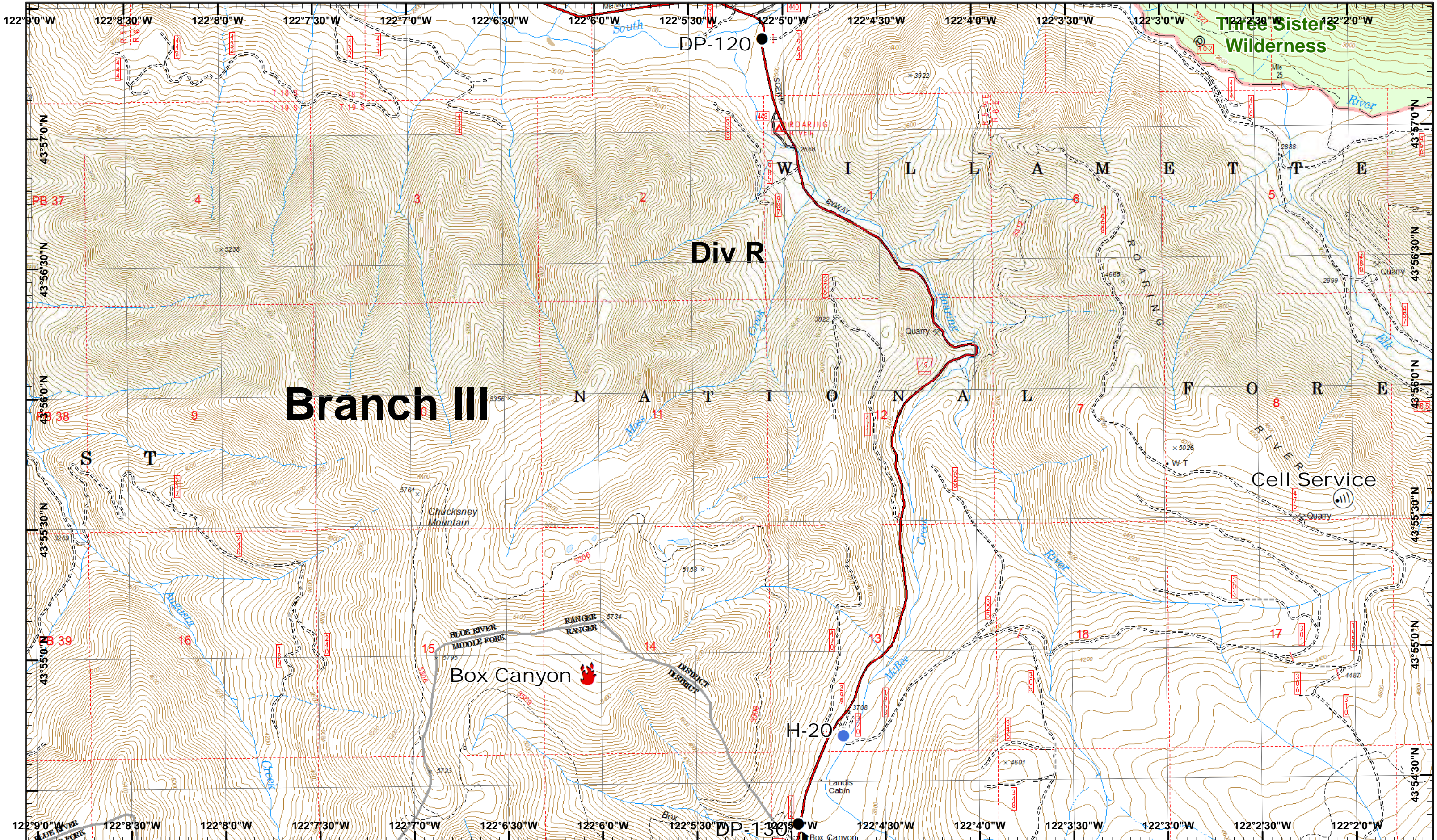


1	2	3
4	5	6
7	8	9
10	11	12
13	14	15

Page 13  
 ( ) Division  
 [ ] Branch







# Branch III

DP-120

Div R

Three Sisters Wilderness

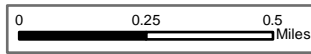
Box Canyon 

H-20

Cell Service 

Rebel, Pete Horse Creek August 31, 2017

IR 8/29/2017 @ 2144  
 Rebel Fire - 5,547 Acres  
 Pete Fire - 45 Acres  
 Challe Lookout Fire - 384 Acres  
 Roney Fire - 1,380 Acres  
 Separation Fire - 3,884 Acres  
 Avenue Fire - 363 Acres  
 Nash Fire - 2,250 Acres



Drop Point



Fire Location



Helispot



Internet Access



1	2	3
4	5	6
7	8	9
10	11	12
13	14	15

Page 14  
 )( Division  
 )( Branch

