











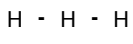
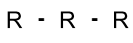





# Rebel Fire/Horse Creek Complex IAP Index


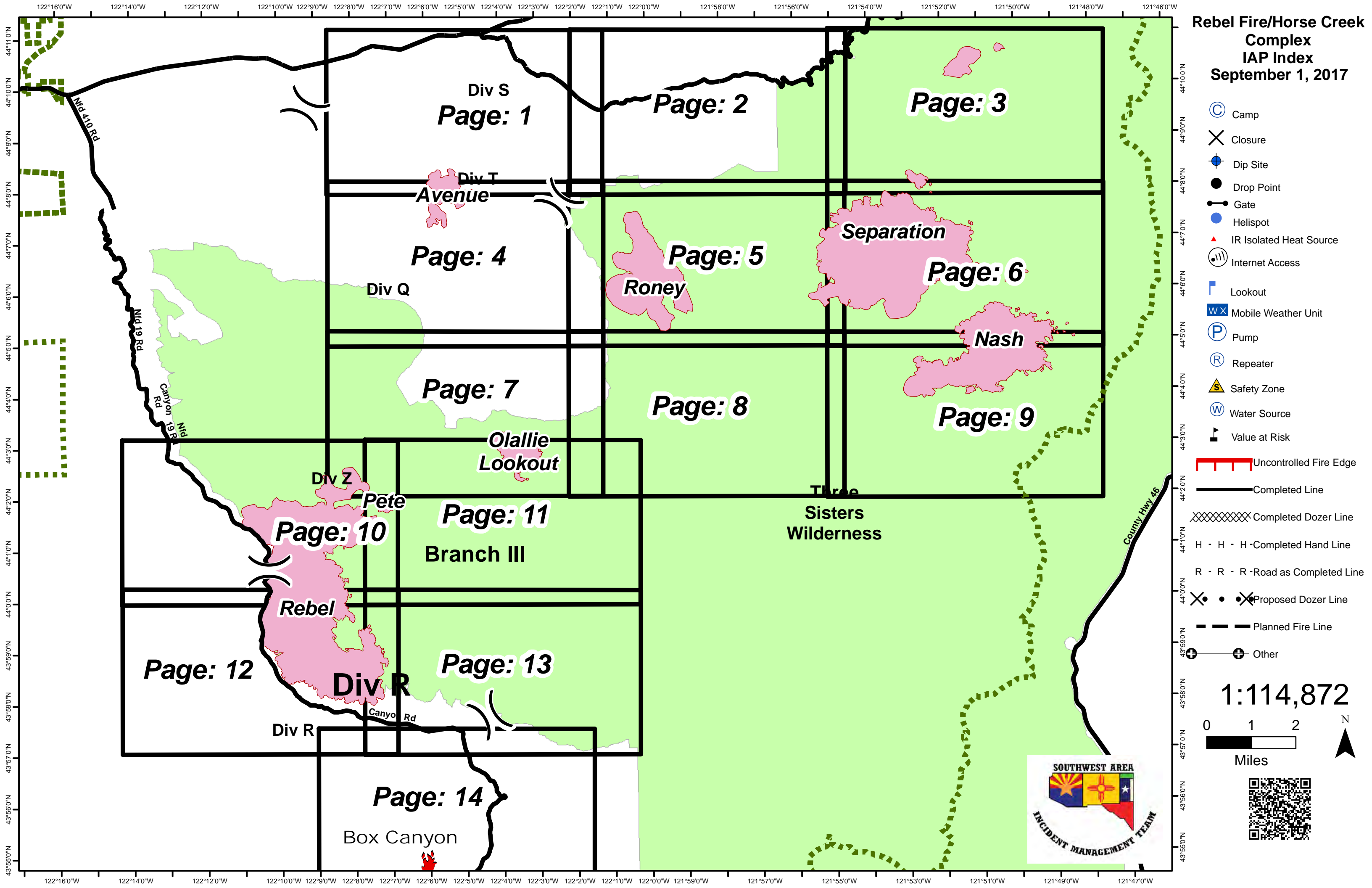
## September 1, 2017

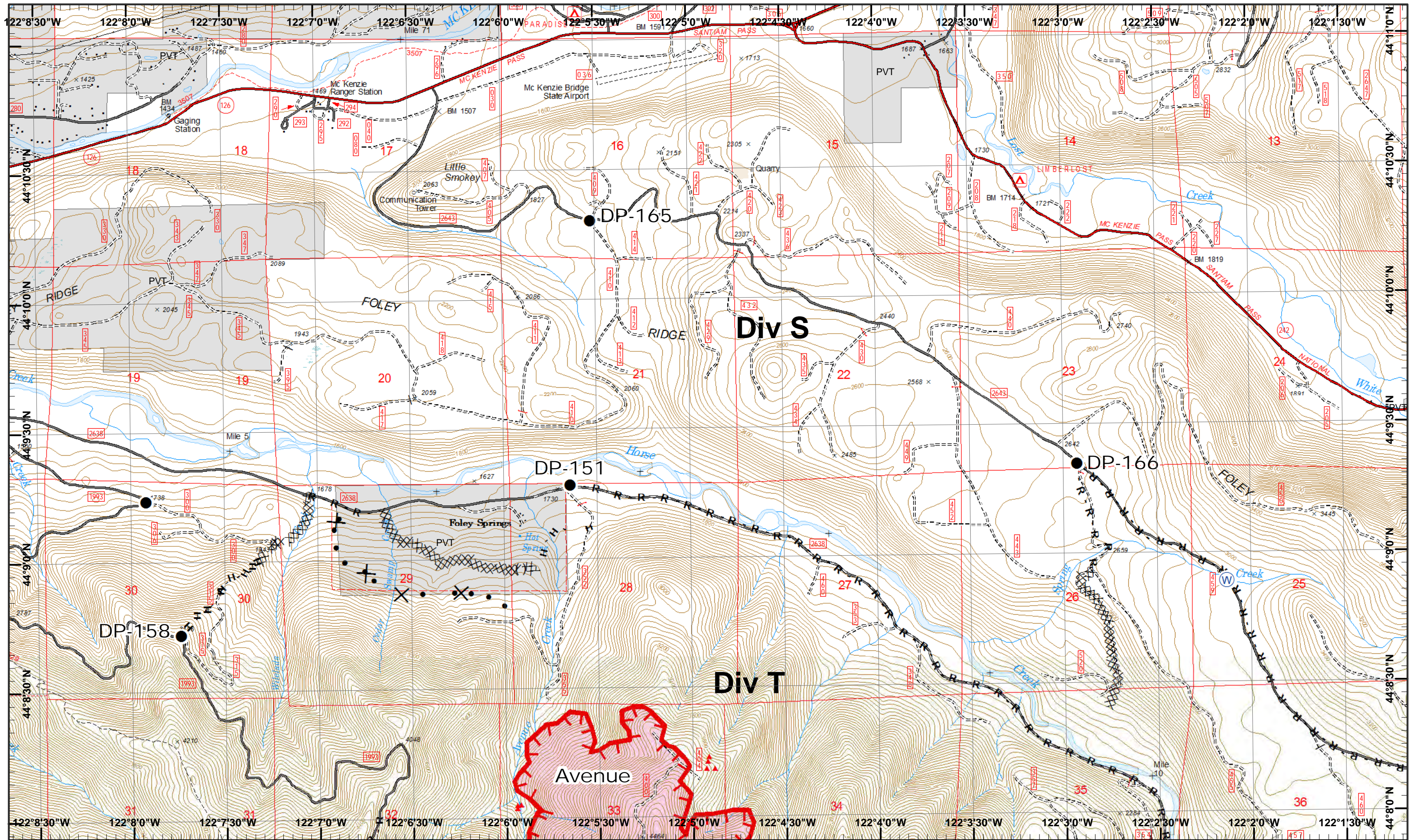
-  Camp
-  Closure
-  Dip Site
-  Drop Point
-  Gate
-  Helispot
-  IR Isolated Heat Source
-  Internet Access
-  Lookout
-  Mobile Weather Unit
-  Pump
-  Repeater
-  Safety Zone
-  Water Source
-  Value at Risk

-  Uncontrolled Fire Edge
-  Completed Line
-  Completed Dozer Line
-  Completed Hand Line
-  Road as Completed Line
-  Proposed Dozer Line
-  Planned Fire Line
-  Other

1:114,872

0 1 2 Miles



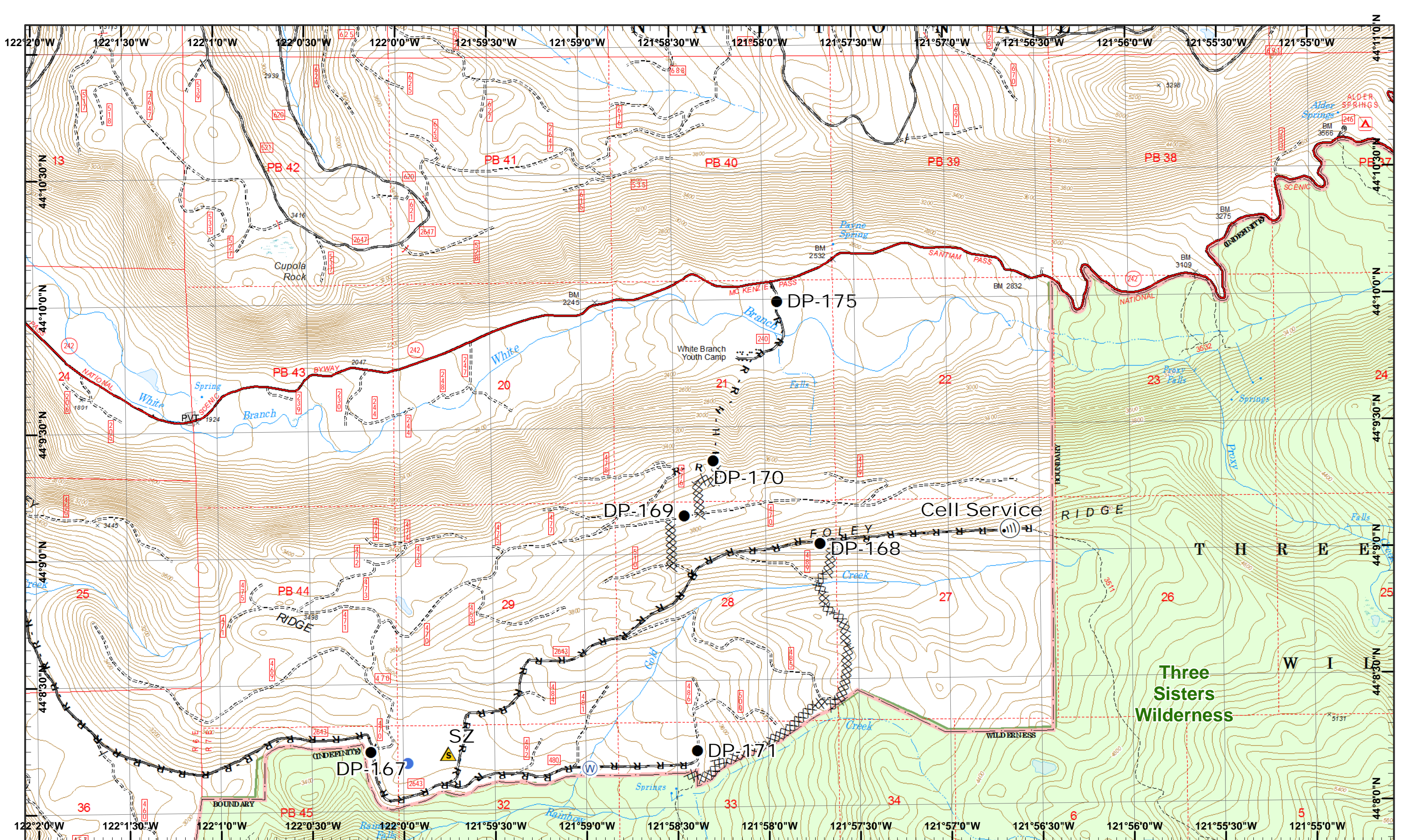
**Rebel, Pete Horse Creek**  
 September 1, 2017  
 IR 8/31/2017 @ 0150  
 Rebel Fire - 5,970 Acres  
 Pete Fire - 49 Acres  
 Ollie Lookout Fire - 413 Acres  
 Roney Fire - 1,635 Acres  
 Separation Fire - 4,574 Acres  
 Avenue Fire - 447 Acres  
 Nash Fire - 2,448 Acres

0 0.25 0.5 Miles  
 Map Created 8/31/2017 8:12:06 PM RDC

- North
- Drop Point
- Water Source
- Completed Dozer R - Road as Line
- IR Heat Source
- Proposed Dozer
- Ridge/Geographic Feature
- Uncontrolled Fire
- Completed Hand



1	2	3
4	5	6
7	8	9
10	11	12
13	14	15



**Rebel, Pete Horse Creek**  
 September 1, 2017  
 IR 8/31/2017 @ 0150  
 Rebel Fire - 5,970 Acres  
 Pete Fire - 49 Acres  
 Ollie Lookout Fire - 413 Acres  
 Roney Fire - 1,635 Acres  
 Separation Fire - 4,574 Acres  
 Avenue Fire - 447 Acres  
 Nash Fire - 2,448 Acres

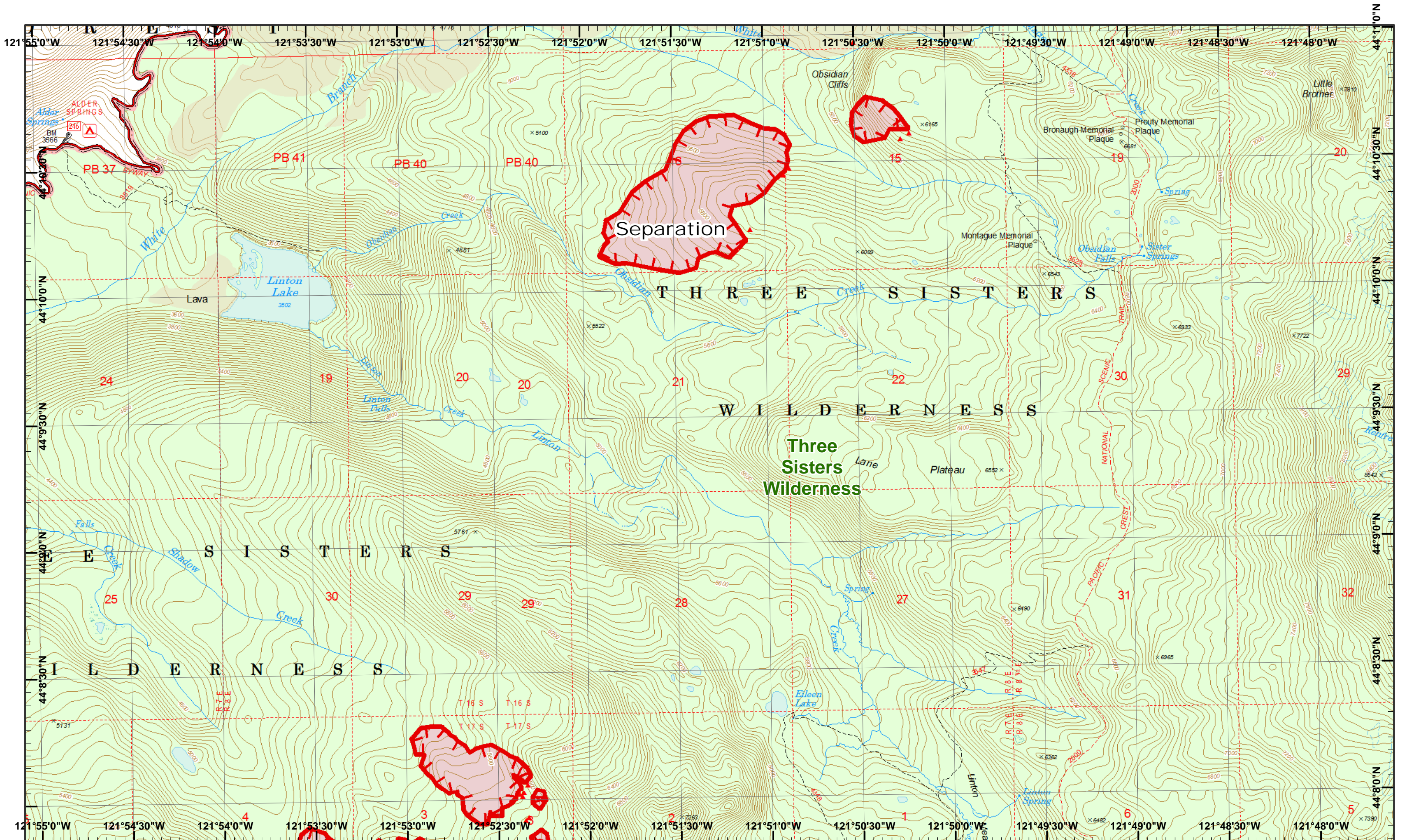
0 0.25 0.5 Miles  
 Map Created 8/31/2017 8:13:09 PM RDC

- Drop Point
- Internet Access
- Safety Zone
- Water Source
- Completed Dozer R - Road as Line
- Helispot
- Completed Hand



1	2	3
4	5	6
7	8	9
10	11	12
13	14	

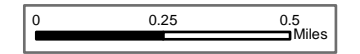




**Rebel, Pete**  
**Horse Creek**  
 September 1, 2017

IR 8/31/2017 @ 0150  
 Rebel Fire - 5,970 Acres  
 Pete Fire - 49 Acres  
 Ollie Lookout Fire - 413 Acres  
 Roney Fire - 1,635 Acres  
 Separation Fire - 4,574 Acres  
 Avenue Fire - 447 Acres  
 Nash Fire - 2,448 Acres

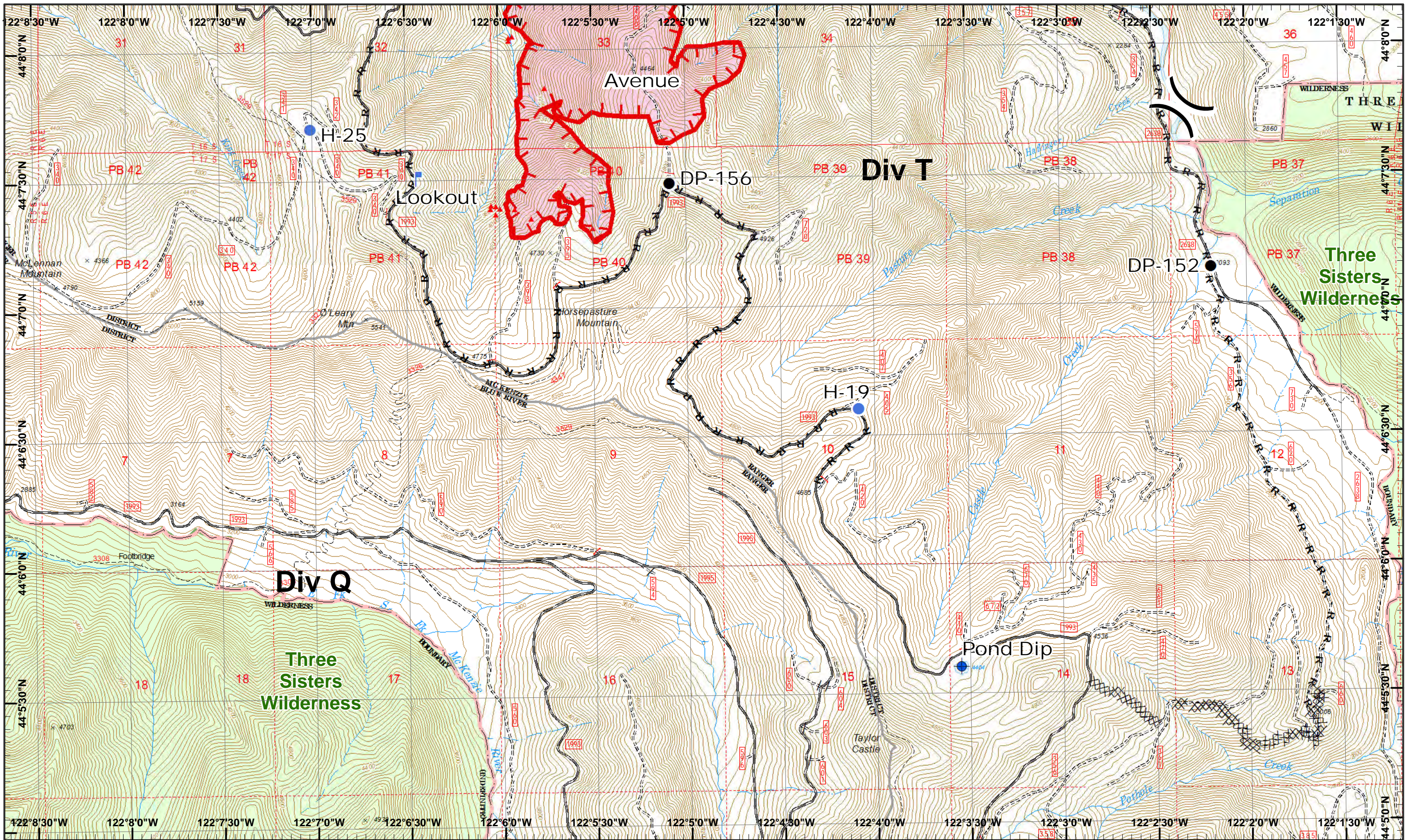
 IR Heat Source  
 Uncontrolled Fire



1	2	3
4	5	6
7	8	9
10	11	12
13	14	

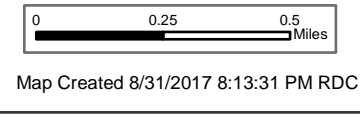
Page 3  
 )( Division  
 )( Branch





Rebel, Pete  
 Horse Creek  
 September 1, 2017

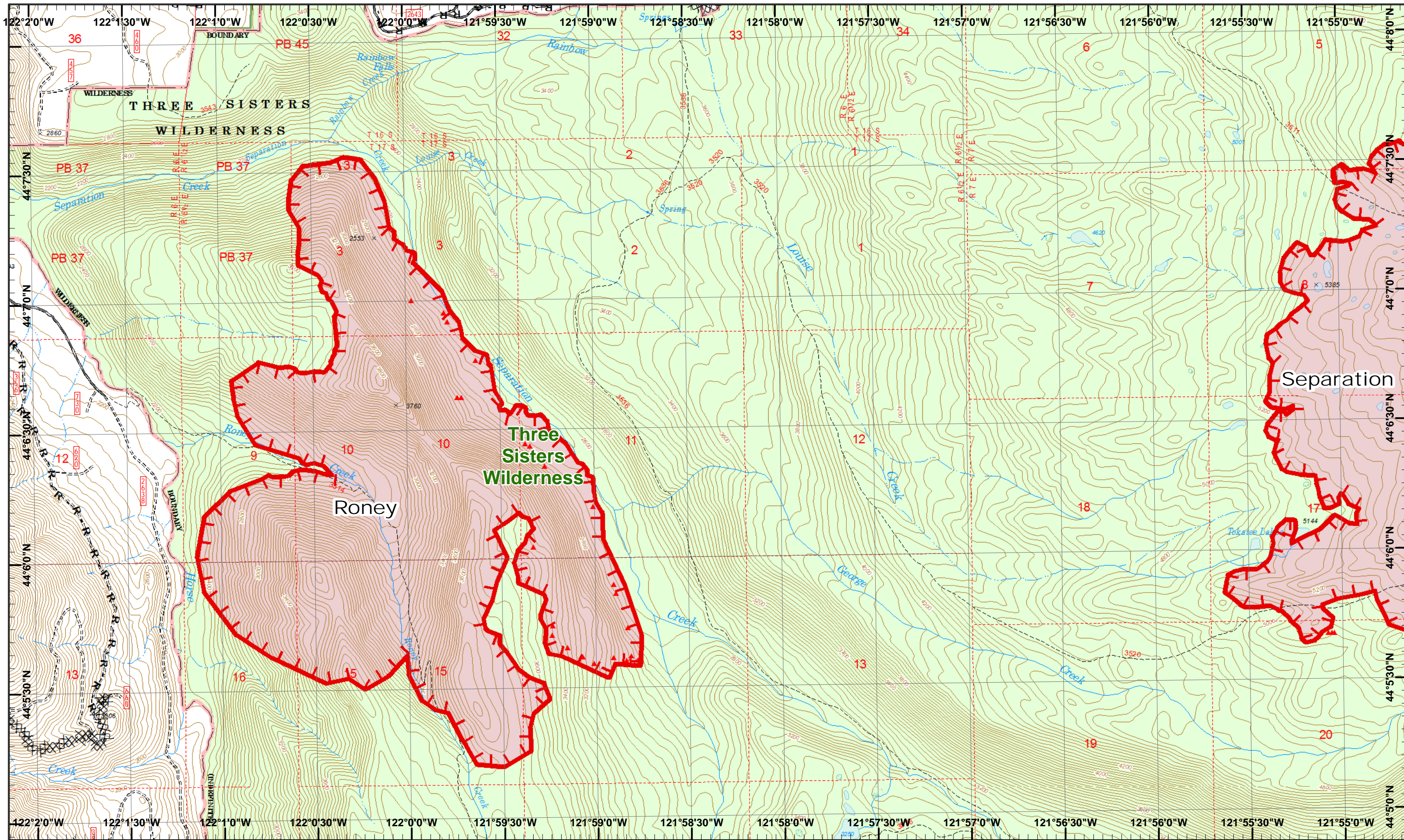
IR 8/31/2017 @ 0150  
 Rebel Fire - 5,970 Acres  
 Pete Fire - 49 Acres  
 Ollie Lookout Fire - 413 Acres  
 Roney Fire - 1,635 Acres  
 Separation Fire - 4,574 Acres  
 Avenue Fire - 447 Acres  
 Nash Fire - 2,448 Acres



- Dip Site
- Helispot
- Lookout
- Completed Dozer R - Road as Line
- Drop Point
- IR Heat Source
- Uncontrolled Fire



1	2	3
4	5	6
7	8	9
10	11	12
13	14	15



**Rebel, Pete Horse Creek**  
 September 1, 2017  
 IR 8/31/2017 @ 0150  
 Rebel Fire - 5,970 Acres  
 Pete Fire - 49 Acres  
 Ollie Lookout Fire - 413 Acres  
 Roney Fire - 1,635 Acres  
 Separation Fire - 4,574 Acres  
 Avenue Fire - 447 Acres  
 Nash Fire - 2,448 Acres

0 0.25 0.5 Miles  
 Map Created 8/31/2017 8:13:40 PM RDC

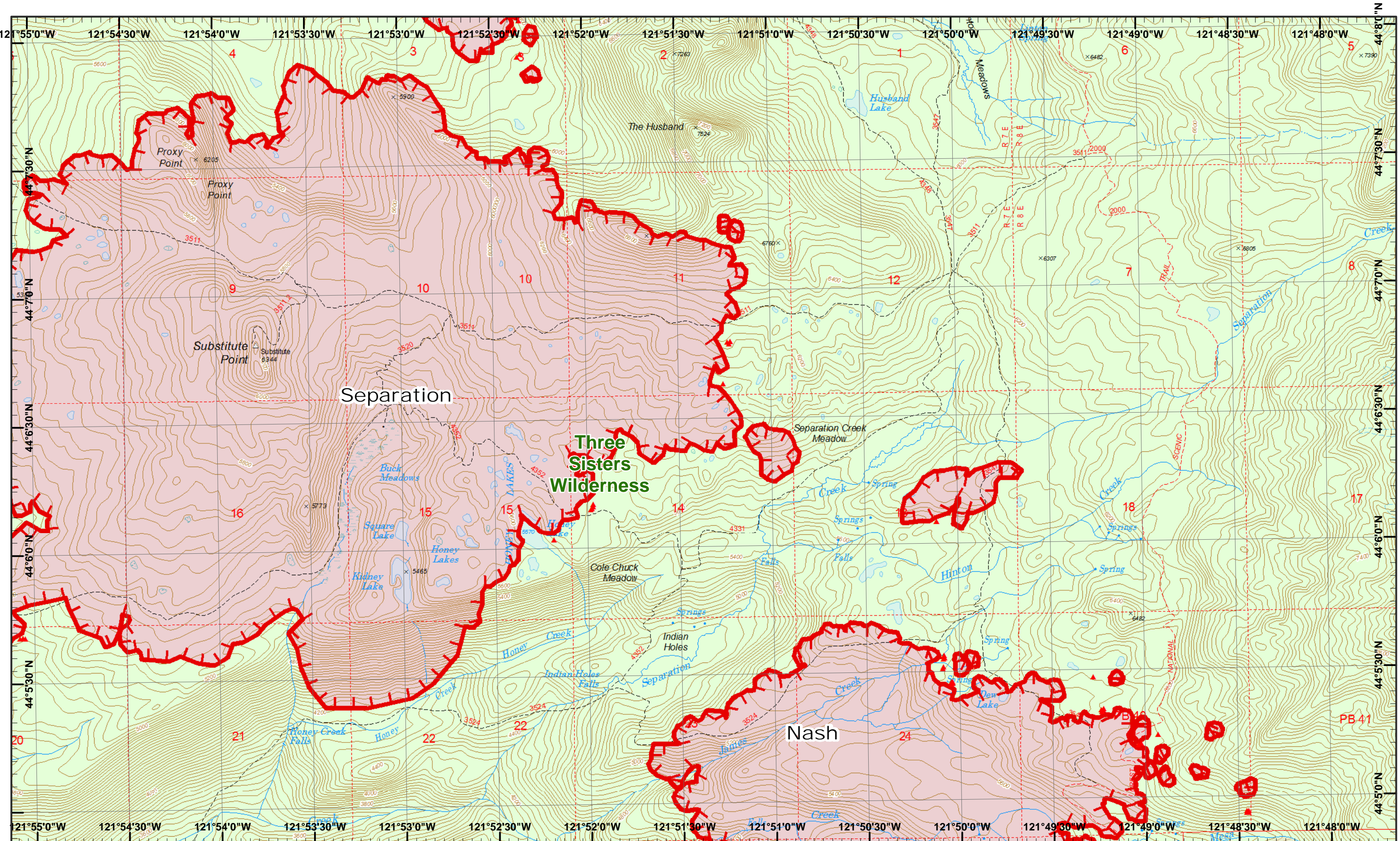
IR Heat Source Uncontrolled Fire Road as Line  
 Water Source Completed Dozer



1	2	3
4	5	6
7	8	9
10	11	12
13	14	

Page 5  
 )( Division  
 )( Branch





Rebel, Pete  
Horse Creek  
September 1, 2017

IR 8/31/2017 @ 0150  
 Rebel Fire - 5,970 Acres  
 Pete Fire - 49 Acres  
 Quail Lookout Fire - 413 Acres  
 Roney Fire - 1,635 Acres  
 Separation Fire - 4,574 Acres  
 Avenue Fire - 447 Acres  
 Nash Fire - 2,448 Acres

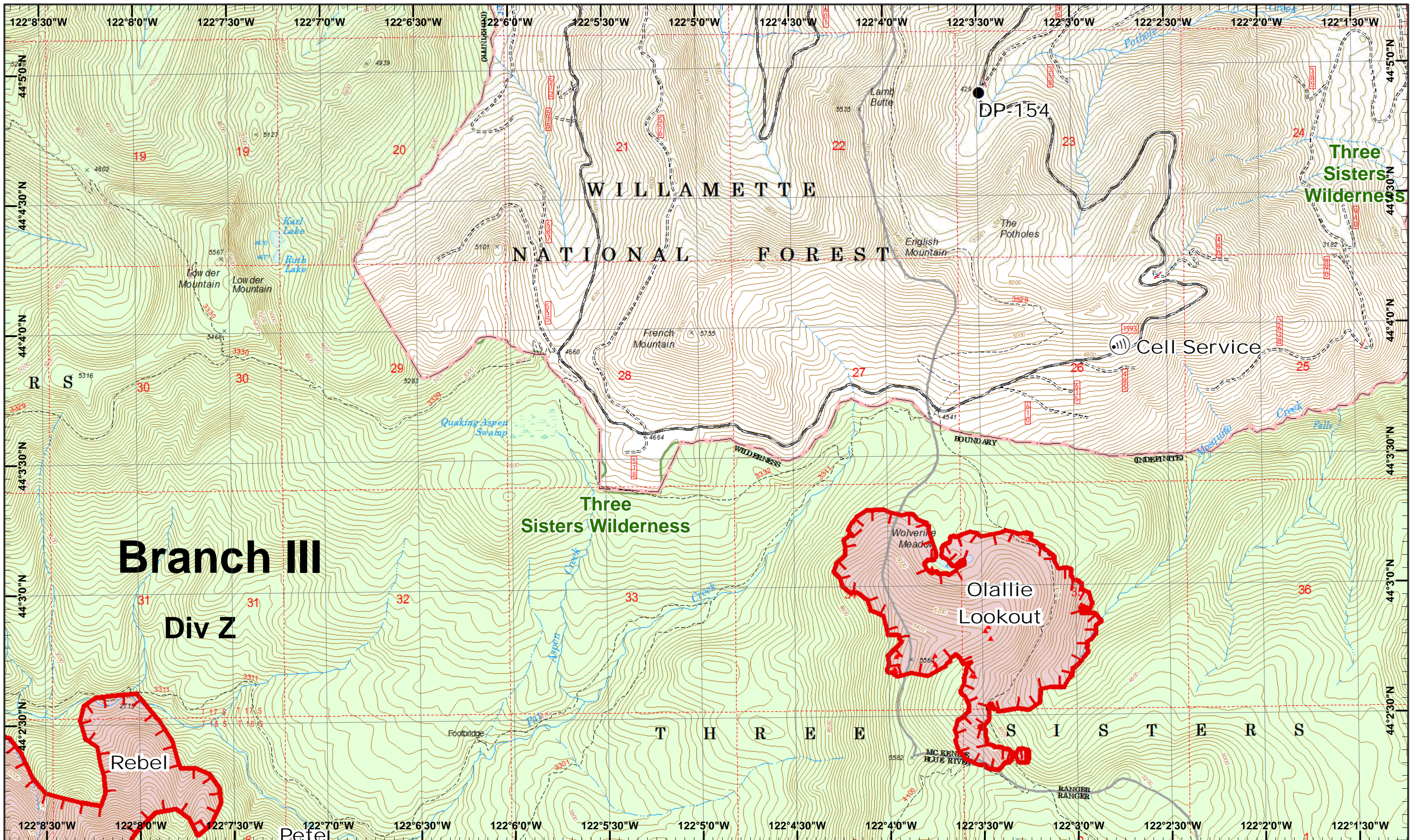
Map Created 8/31/2017 8:13:49 PM RDC

IR Heat Source

Uncontrolled Fire

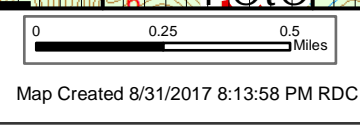


1	2	3
4	5	6
7	8	9
10	11	12
13	14	



Rebel, Pete  
Horse Creek  
September 1, 2017

IR 8/31/2017 @ 0150  
Rebel Fire - 5,970 Acres  
Pete Fire - 49 Acres  
Olallie Lookout Fire - 413 Acres  
Roney Fire - 1,635 Acres  
Separation Fire - 4,574 Acres  
Avenue Fire - 447 Acres  
Nash Fire - 2,448 Acres

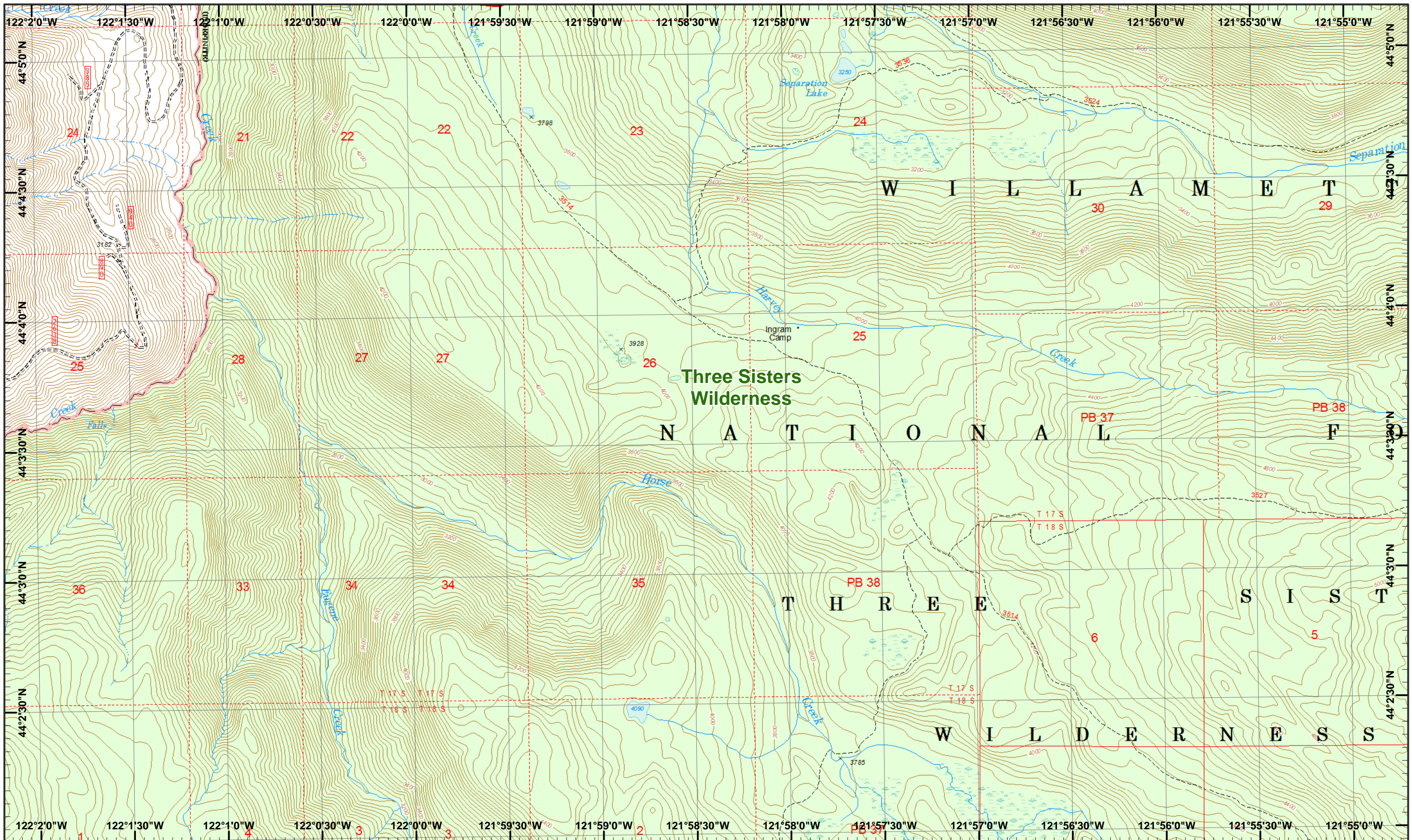


Drop Point  
 IR Heat Source  
 Internet Access  
 Uncontrolled Fire

1	2	3
4	5	6
7	8	9
10	11	12
13	14	15

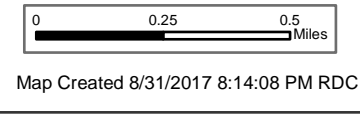
Page 7  
 )( Division  
 )( Branch



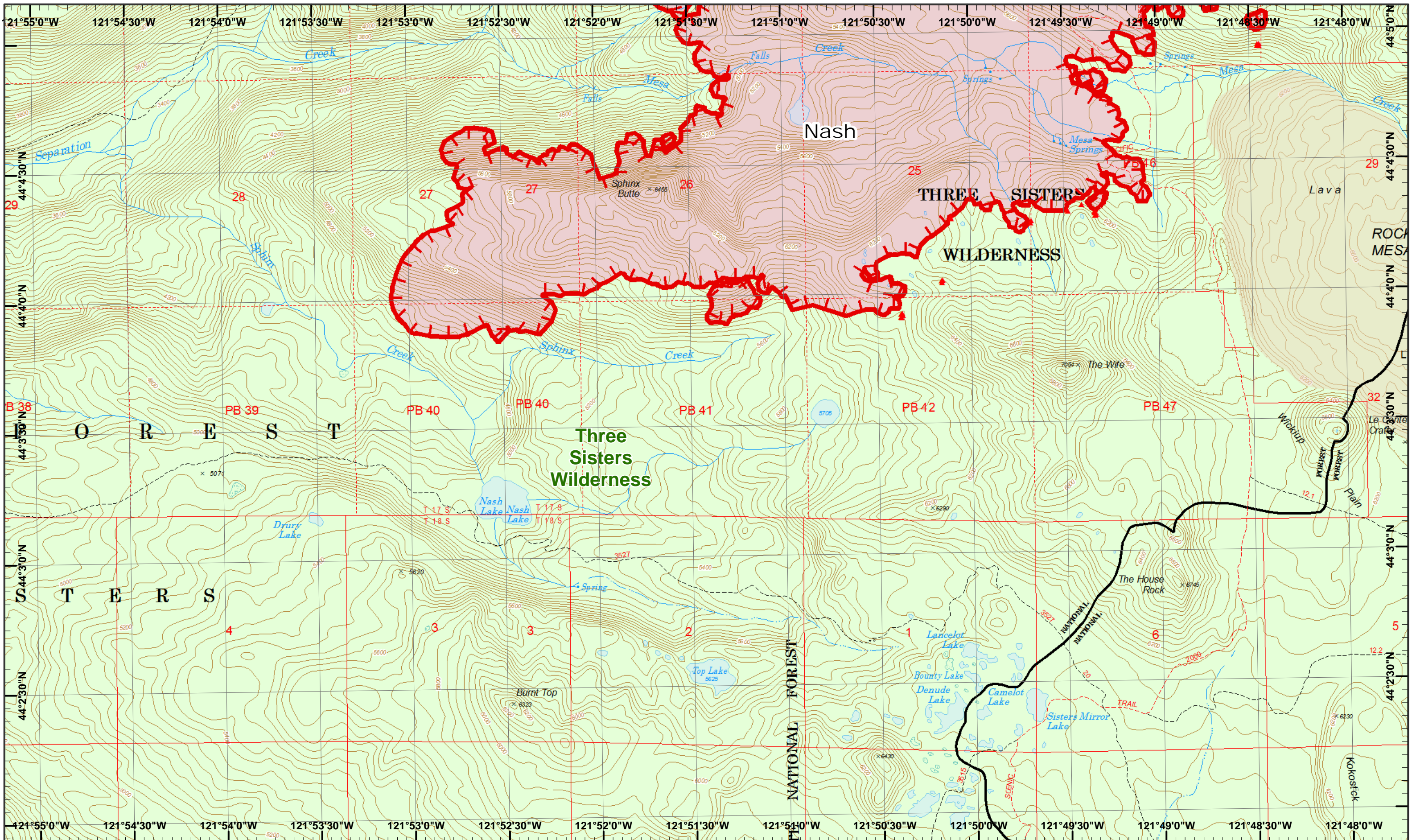


Rebel, Pete  
 Horse Creek  
 September 1, 2017

IR 8/31/2017 @ 0150  
 Rebel Fire - 5,970 Acres  
 Pete Fire - 49 Acres  
 Ollie Lookout Fire - 413 Acres  
 Roney Fire - 1,635 Acres  
 Separation Fire - 4,574 Acres  
 Avenue Fire - 447 Acres  
 Nash Fire - 2,448 Acres

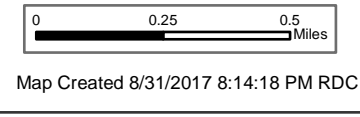


1	2	3
4	5	6
7	8	9
10	11	12
13	14	



Rebel, Pete  
Horse Creek  
September 1, 2017

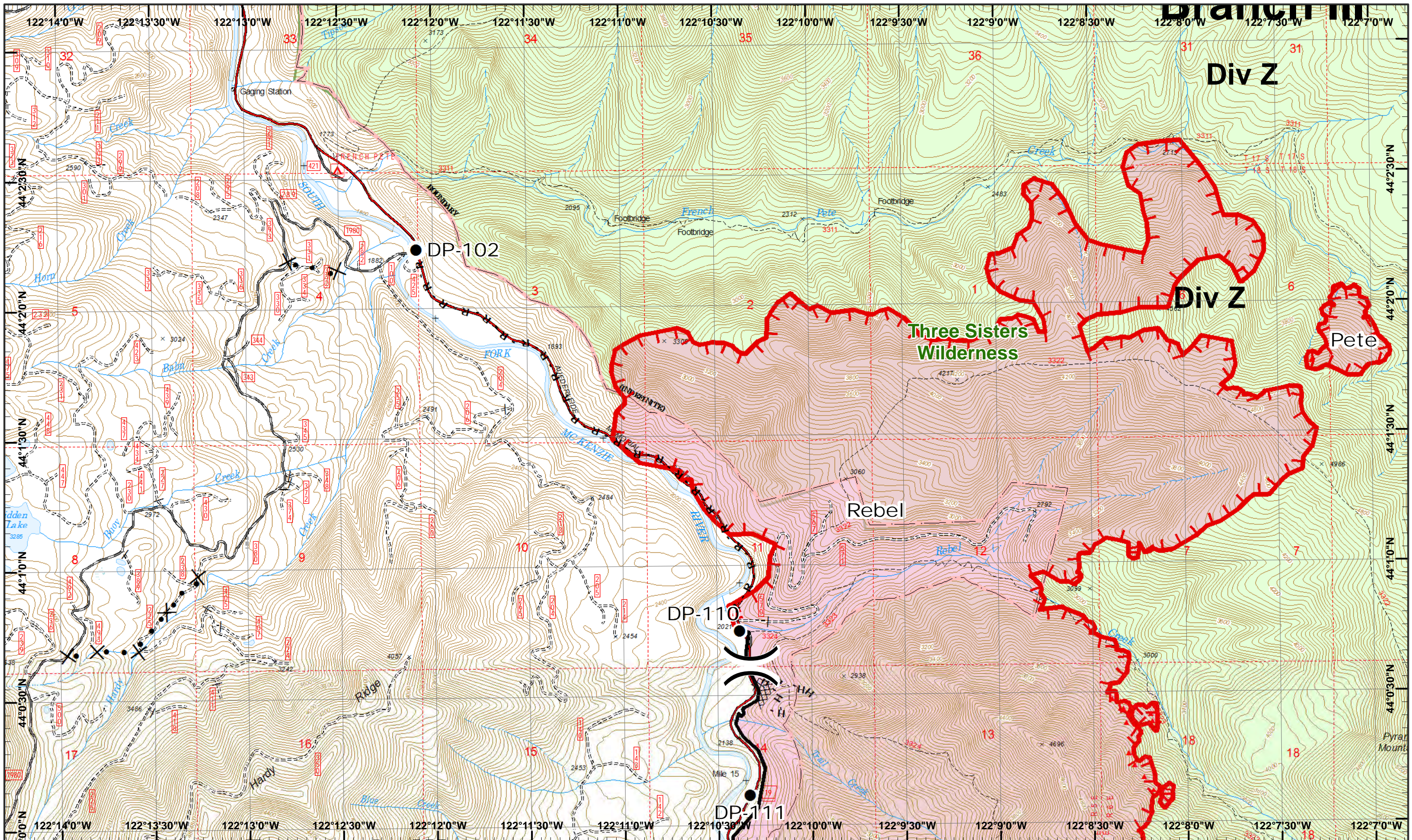
IR 8/31/2017 @ 0150  
Rebel Fire - 5,970 Acres  
Pete Fire - 49 Acres  
Ollie Lookout Fire - 413 Acres  
Roney Fire - 1,635 Acres  
Separation Fire - 4,574 Acres  
Avenue Fire - 447 Acres  
Nash Fire - 2,448 Acres



IR Heat Source  
 Uncontrolled Fire



1	2	3
4	5	6
7	8	9
10	11	12
13	14	15



Rebel, Pete  
 Horse Creek  
 September 1, 2017

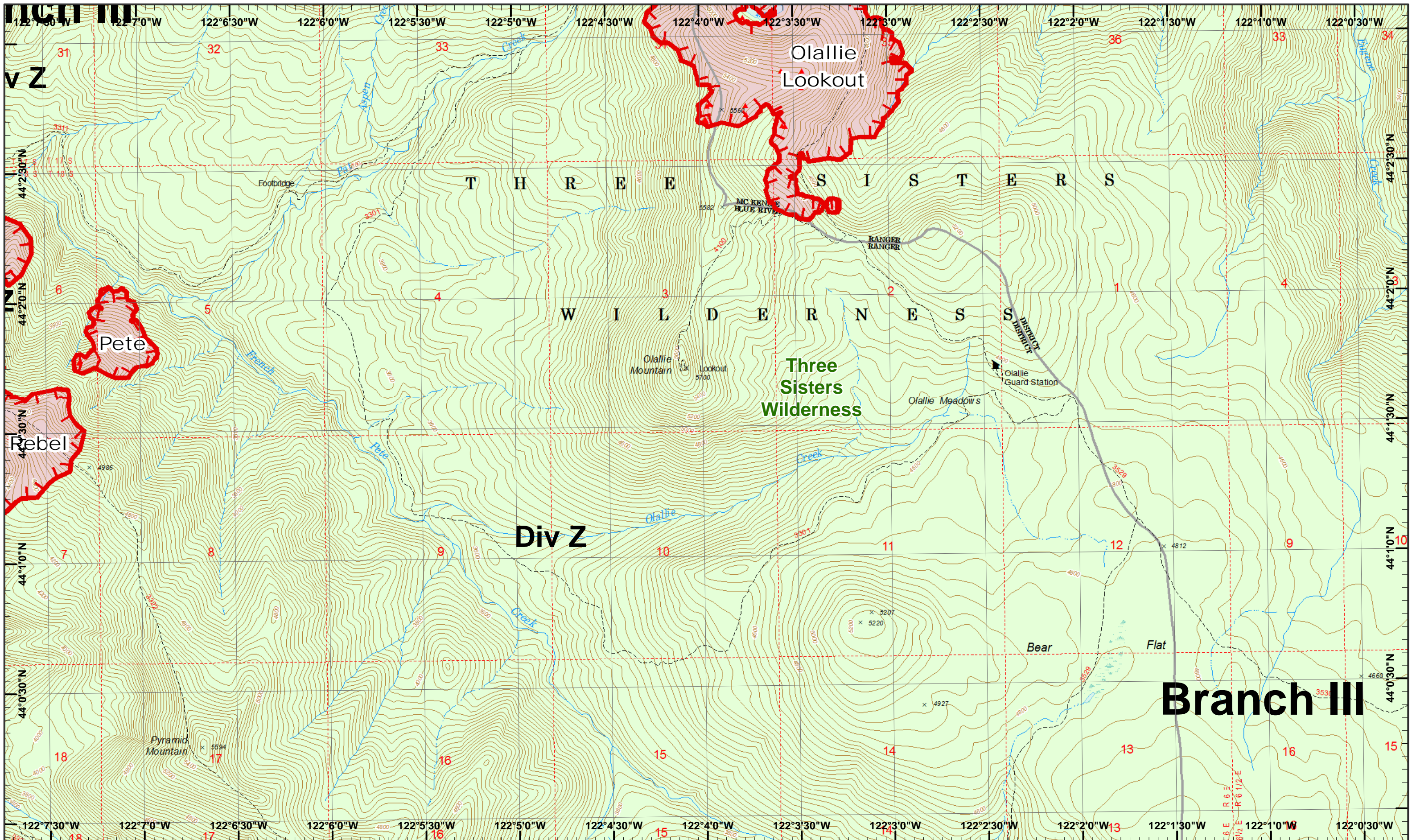
IR 8/31/2017 @ 0150  
 Rebel Fire - 5,970 Acres  
 Pete Fire - 49 Acres  
 Chaille Lookout Fire - 413 Acres  
 Roney Fire - 1,635 Acres  
 Separation Fire - 4,574 Acres  
 Avenue Fire - 447 Acres  
 Nash Fire - 2,448 Acres  
 Map Created 8/31/2017 8:12:17 PM RDC



- Drop Point
- ▲ IR Heat Source
- W Water Source
- Completed
- Completed Hand
- ⊗ Completed Dozer
- Proposed Dozer
- Road as Line
- Uncontrolled Fire

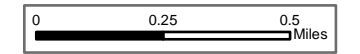


1	2	3
4	5	6
7	8	9
10	11	12
13	14	



**Rebel, Pete**  
**Horse Creek**  
 September 1, 2017

IR 8/31/2017 @ 0150  
 Rebel Fire - 5,970 Acres  
 Pete Fire - 49 Acres  
 Olallie Lookout Fire - 413 Acres  
 Roney Fire - 1,635 Acres  
 Separation Fire - 4,574 Acres  
 Avenue Fire - 447 Acres  
 Nash Fire - 2,448 Acres



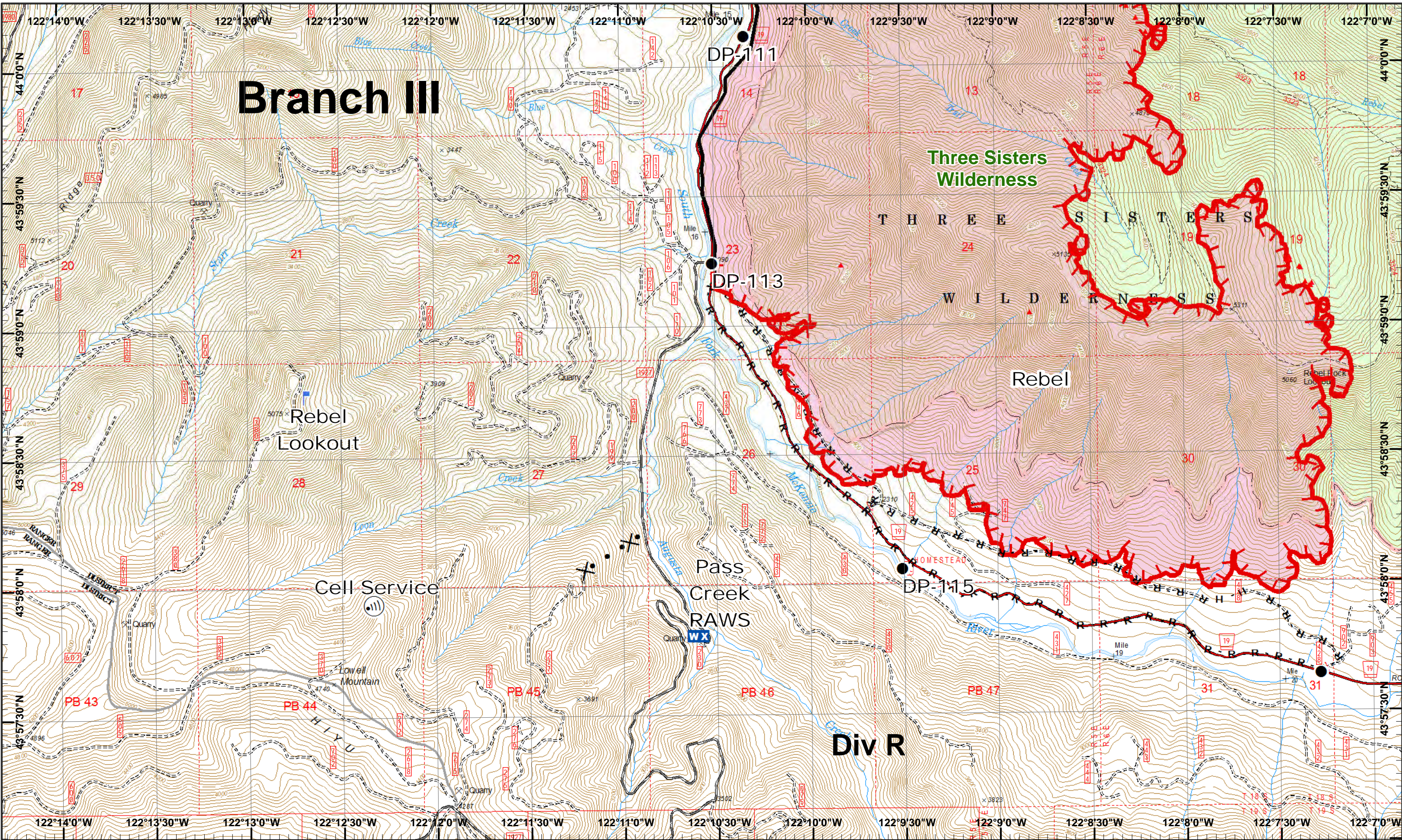
 IR Heat Source  
 Uncontrolled Fire

Map Created 8/31/2017 8:12:27 PM RDC



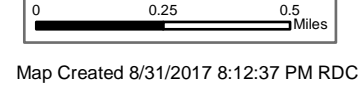
1	2	3
4	5	6
7	8	9
10	11	12
13	14	15





**Rebel, Pete Horse Creek**  
 September 1, 2017

IR 8/31/2017 @ 0150  
 Rebel Fire - 5,970 Acres  
 Pete Fire - 49 Acres  
 Quail Lookout Fire - 413 Acres  
 Roney Fire - 1,635 Acres  
 Separation Fire - 4,574 Acres  
 Avenue Fire - 447 Acres  
 Nash Fire - 2,448 Acres



● Drop Point  
 ▲ IR Heat Source

Ⓜ Internet Access

Ⓛ Lookout

WX Mobile Weather

— Completed  
 R - Road as Line

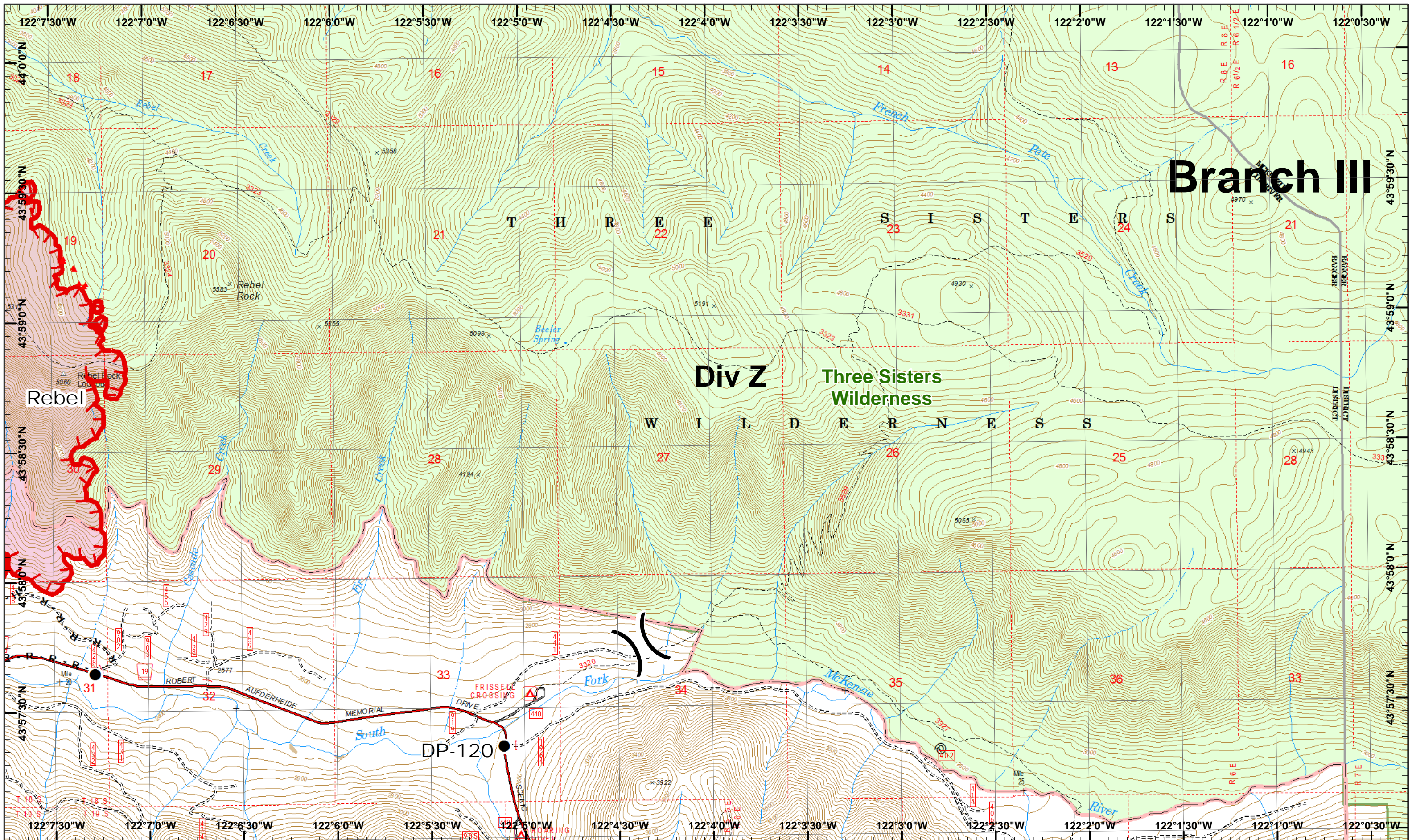
▬ Uncontrolled Fire  
 H - Completed Hand  
 ● Proposed Dozer



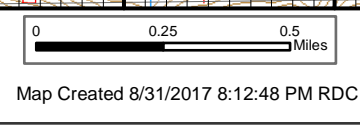
1	2	3
4	5	6
7	8	9
10	11	12
13	14	15

Page 12  
 )( Division  
 )( Branch





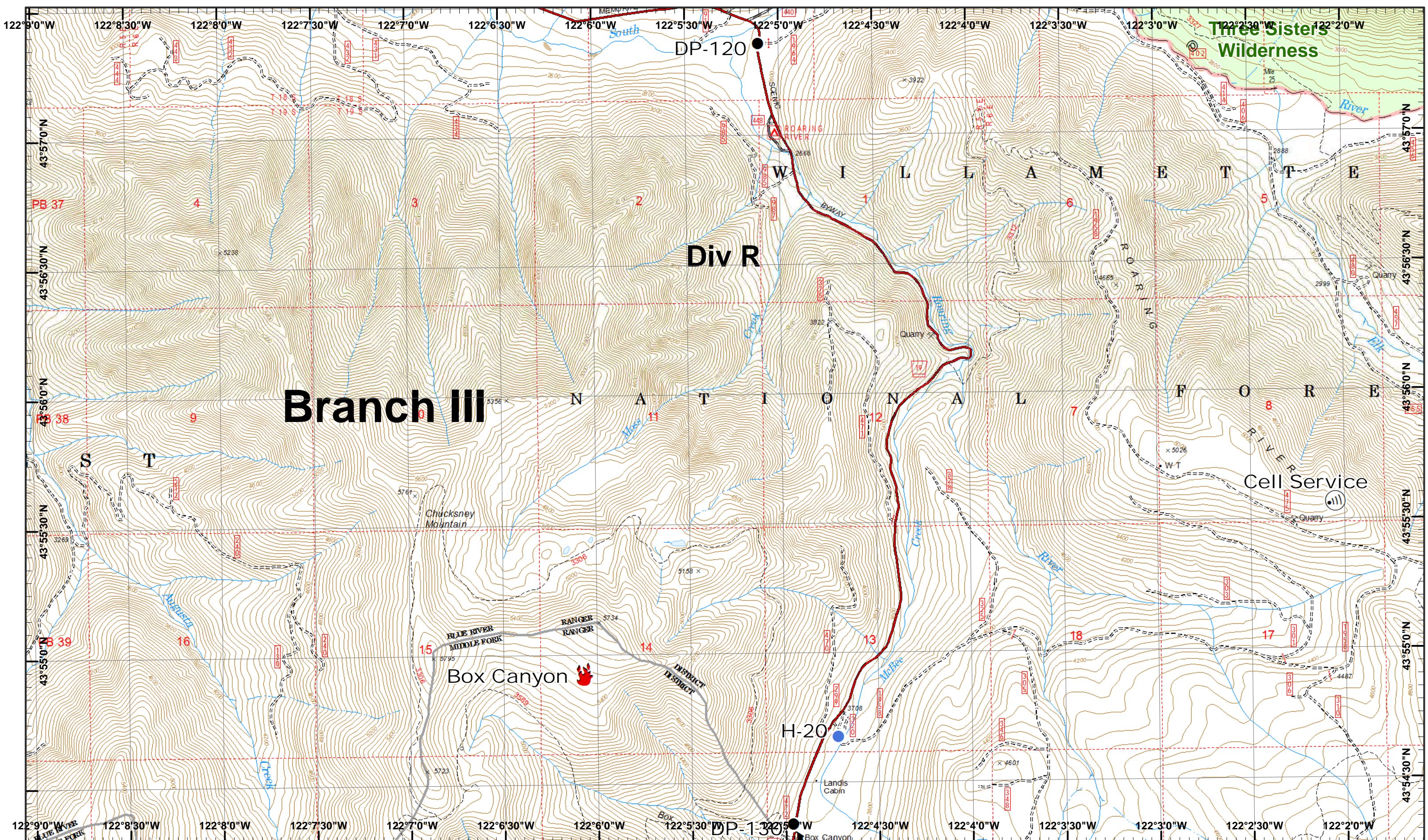
**Rebel, Pete Horse Creek**  
 September 1, 2017  
 IR 8/31/2017 @ 0150  
 Rebel Fire - 5,970 Acres  
 Pete Fire - 49 Acres  
 Orliee Lookout Fire - 413 Acres  
 Roney Fire - 1,635 Acres  
 Separation Fire - 4,574 Acres  
 Avenue Fire - 447 Acres  
 Nash Fire - 2,448 Acres



Drop Point  
 Uncontrolled Fire  
 R - Road as Line  
 IR Heat Source  
 H - Completed Hand

1	2	3
4	5	6
7	8	9
10	11	12
13	14	15

Page 13  
 )( Division  
 )( Branch



# Branch III

DP-120

Div R

H-20

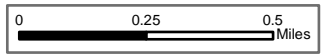
Box Canyon

Three Sisters Wilderness

Cell Service

Rebel, Pete  
Horse Creek  
September 1, 2017

IR 8/31/2017 @ 0150  
Rebel Fire - 5,970 Acres  
Pete Fire - 49 Acres  
Challie Lookout Fire - 413 Acres  
Roney Fire - 1,635 Acres  
Separation Fire - 4,574 Acres  
Avenue Fire - 447 Acres  
Nash Fire - 2,448 Acres



Drop Point

Fire Location

Helispot

Internet Access



1	2	3
4	5	6
7	8	9
10	11	12
13	14	15

Page 14  
)( Division  
[] Branch

