

# Rebel Fire/Horse Creek Complex IAP Index

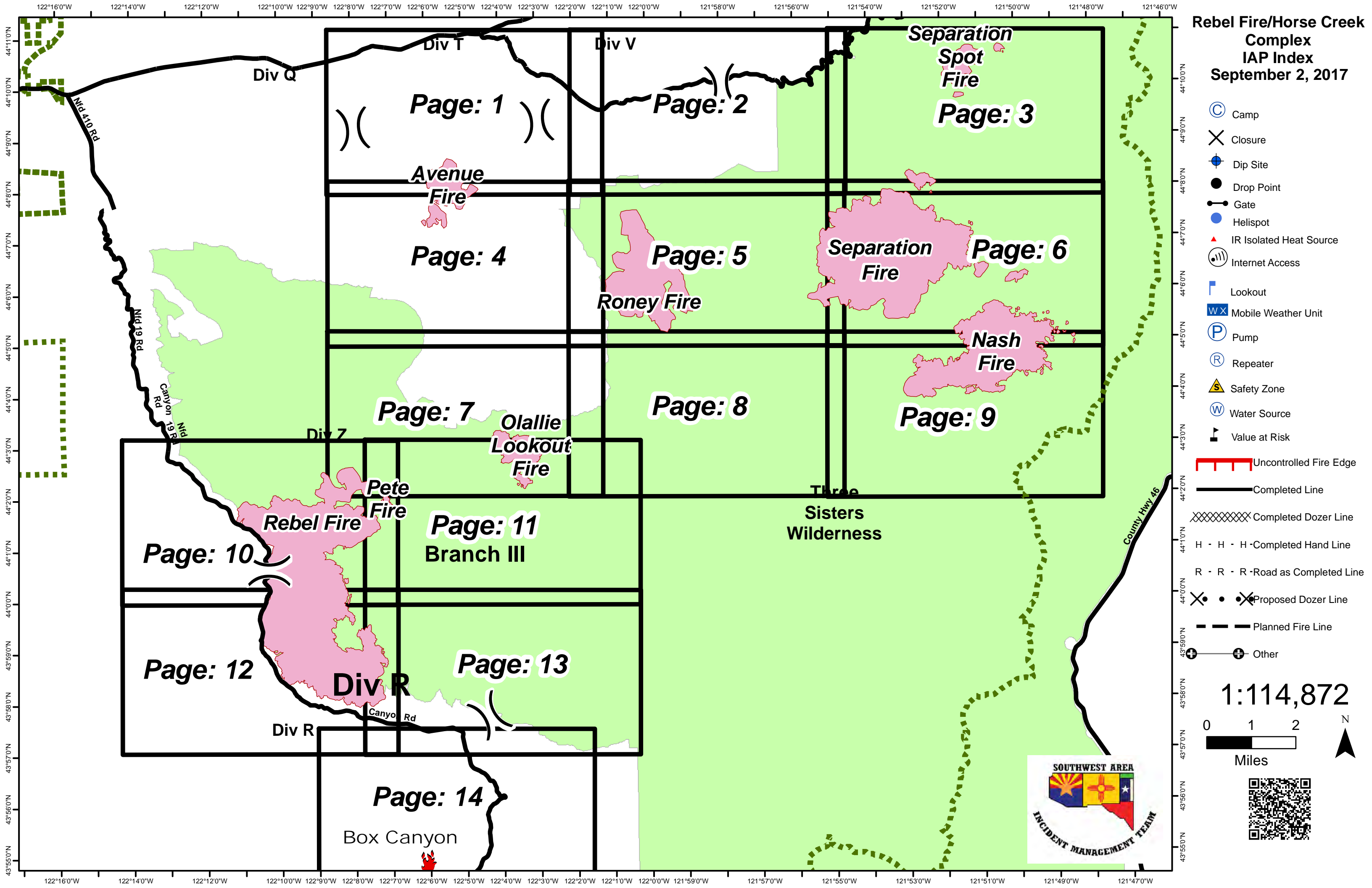
September 2, 2017

- Camp
- Closure
- Dip Site
- Drop Point
- Gate
- Helispot
- IR Isolated Heat Source
- Internet Access
- Lookout
- Mobile Weather Unit
- Pump
- Repeater
- Safety Zone
- Water Source
- Value at Risk

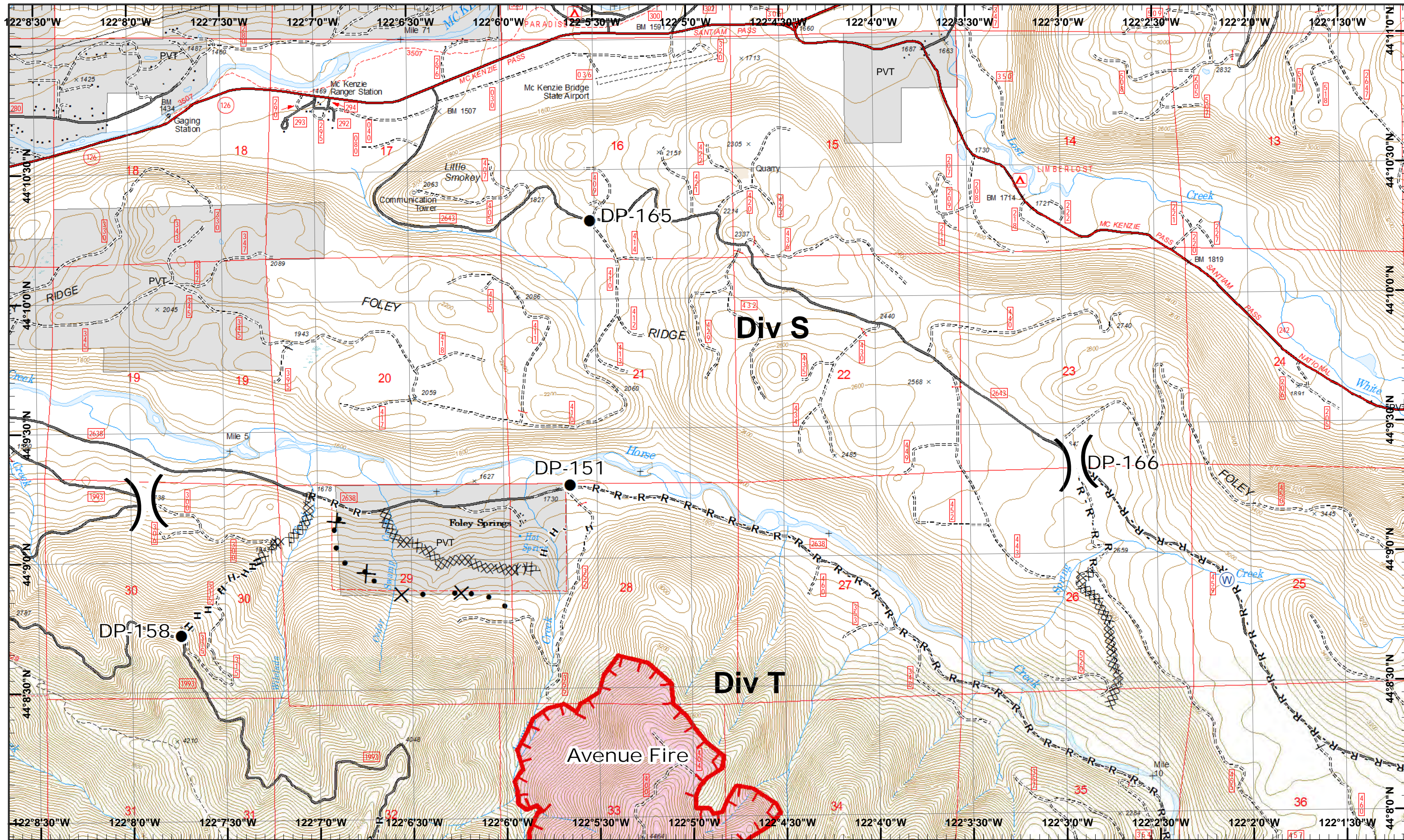
- Uncontrolled Fire Edge
- Completed Line
- Completed Dozer Line
- Completed Hand Line
- Road as Completed Line
- Proposed Dozer Line
- Planned Fire Line
- Other

1:114,872

0 1 2 Miles

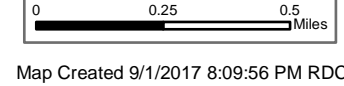






Rebel, Pete  
 Horse Creek  
 September 2, 2017

IR 8/31/2017 @ 2114  
 Rebel Fire - 6,169 Acres  
 Pete Fire - 51 Acres  
 Ocella Lookout Fire - 450 Acres  
 Roney Fire - 1,776 Acres  
 Separation Fire - 4,882 Acres  
 Avenue Fire - 584 Acres  
 Nash Fire - 2,528 Acres



- Drop Point
- ⊕ Water Source
- XXXX Completed Dozer
- R - Road as Line
- Proposed Dozer
- ( X ) Ridge/Geographic Feature
- Uncontrolled Fire
- H - Completed Hand

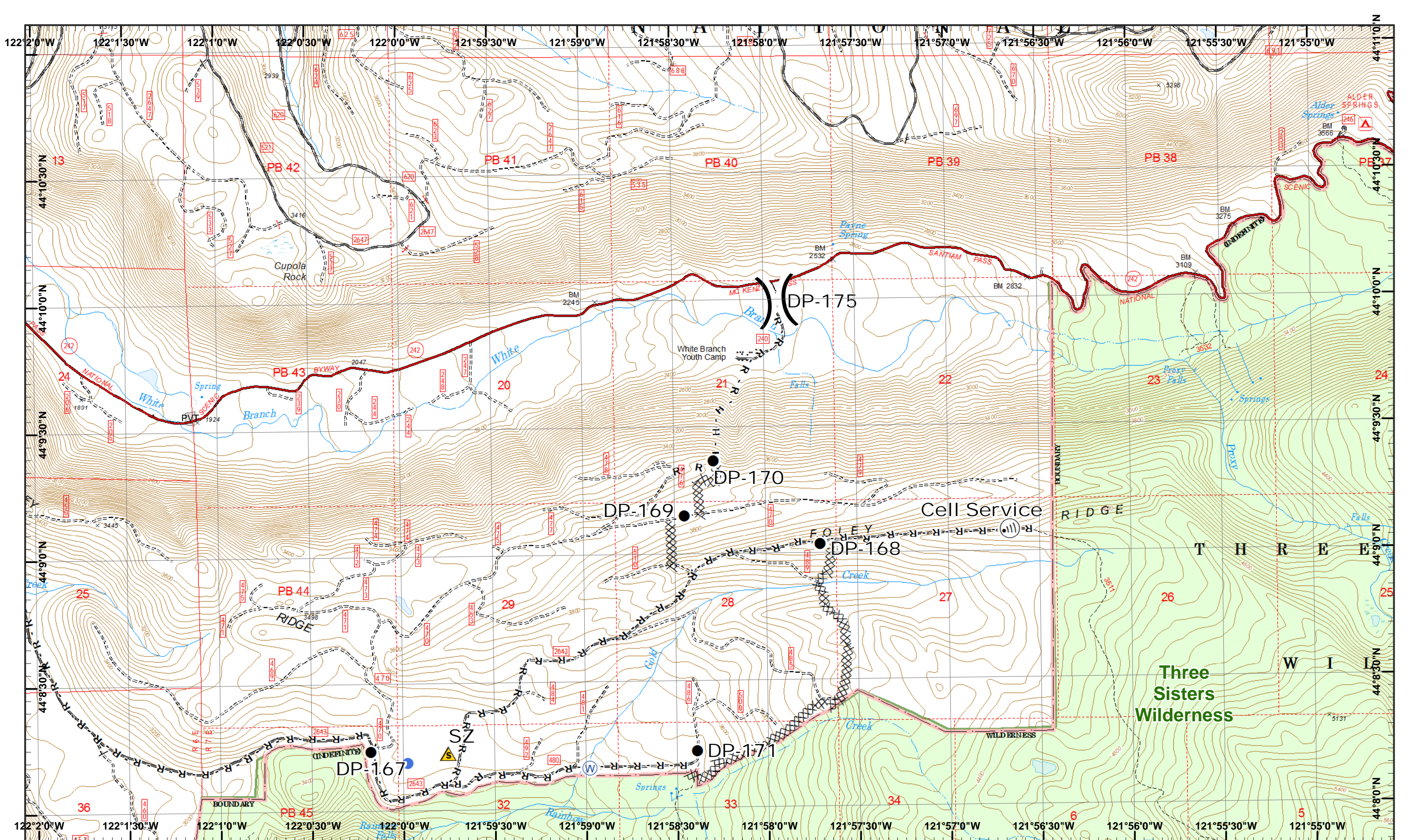


1	2	3
4	5	6
7	8	9
10	11	12
13	14	15

Page 1  
 )( Division  
 ][ Branch







**Rebel, Pete Horse Creek**  
 September 2, 2017  
 IR 8/31/2017 @ 2114  
 Rebel Fire - 6,169 Acres  
 Pete Fire - 51 Acres  
 Ollie Lookout Fire - 450 Acres  
 Roney Fire - 1,776 Acres  
 Separation Fire - 4,882 Acres  
 Avenue Fire - 584 Acres  
 Nash Fire - 2,528 Acres

0 0.25 0.5 Miles  
 Map Created 9/1/2017 8:10:58 PM RDC

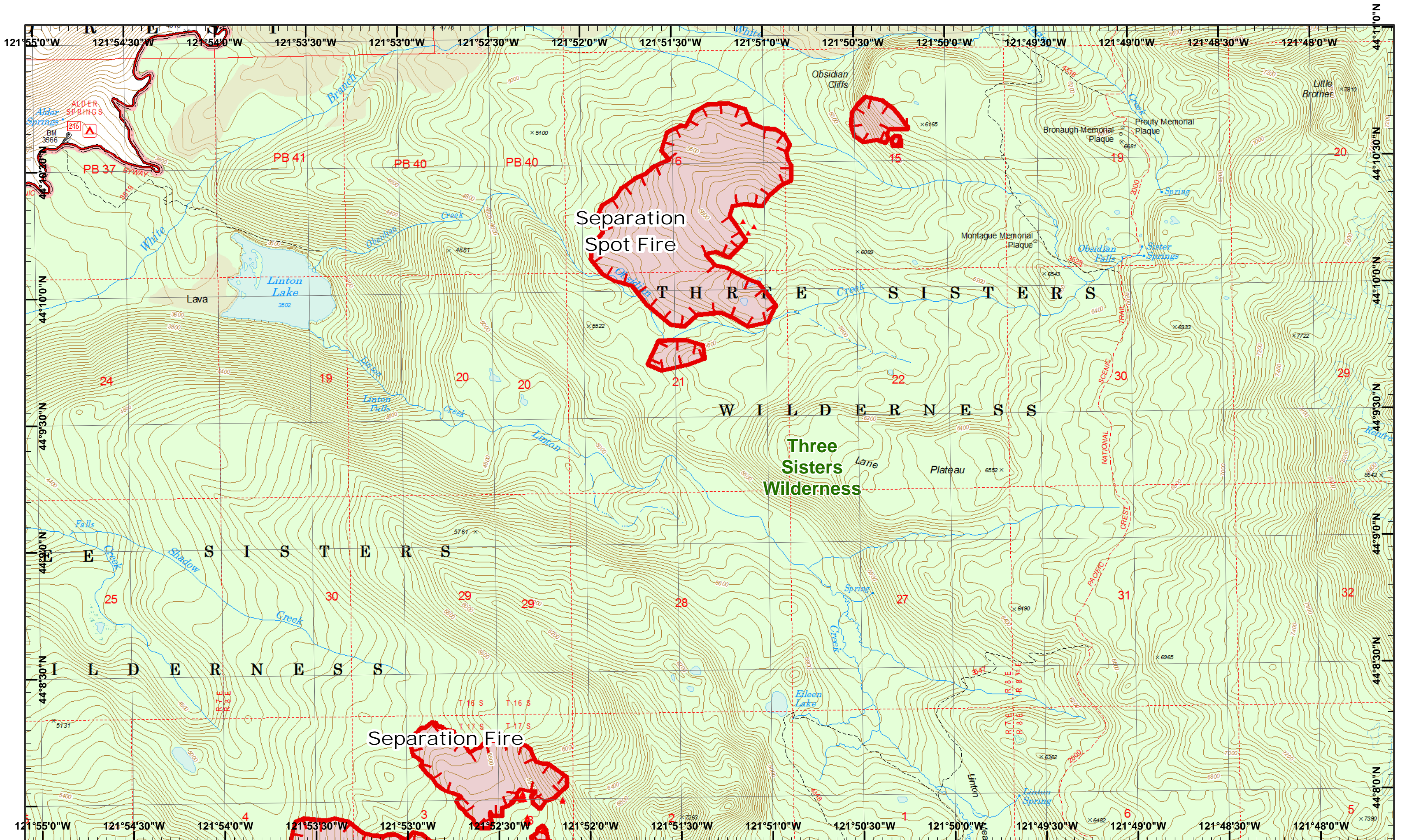
- North Arrow
- Drop Point
- Helispot
- Internet Access
- Safety Zone
- Water Source
- Completed Dozer
- Road as Line
- Completed Hand



1	2	3
4	5	6
7	8	9
10	11	12
13	14	15







**Rebel, Pete Horse Creek**  
 September 2, 2017  
 IR 8/31/2017 @ 2114  
 Rebel Fire - 6,169 Acres  
 Pete Fire - 51 Acres  
 Challe Lookout Fire - 450 Acres  
 Roney Fire - 1,776 Acres  
 Separation Fire - 4,882 Acres  
 Avenue Fire - 584 Acres  
 Nash Fire - 2,528 Acres

0 0.25 0.5 Miles  
 Map Created 9/1/2017 8:11:07 PM RDC

 IR Heat Source  
 Uncontrolled Fire

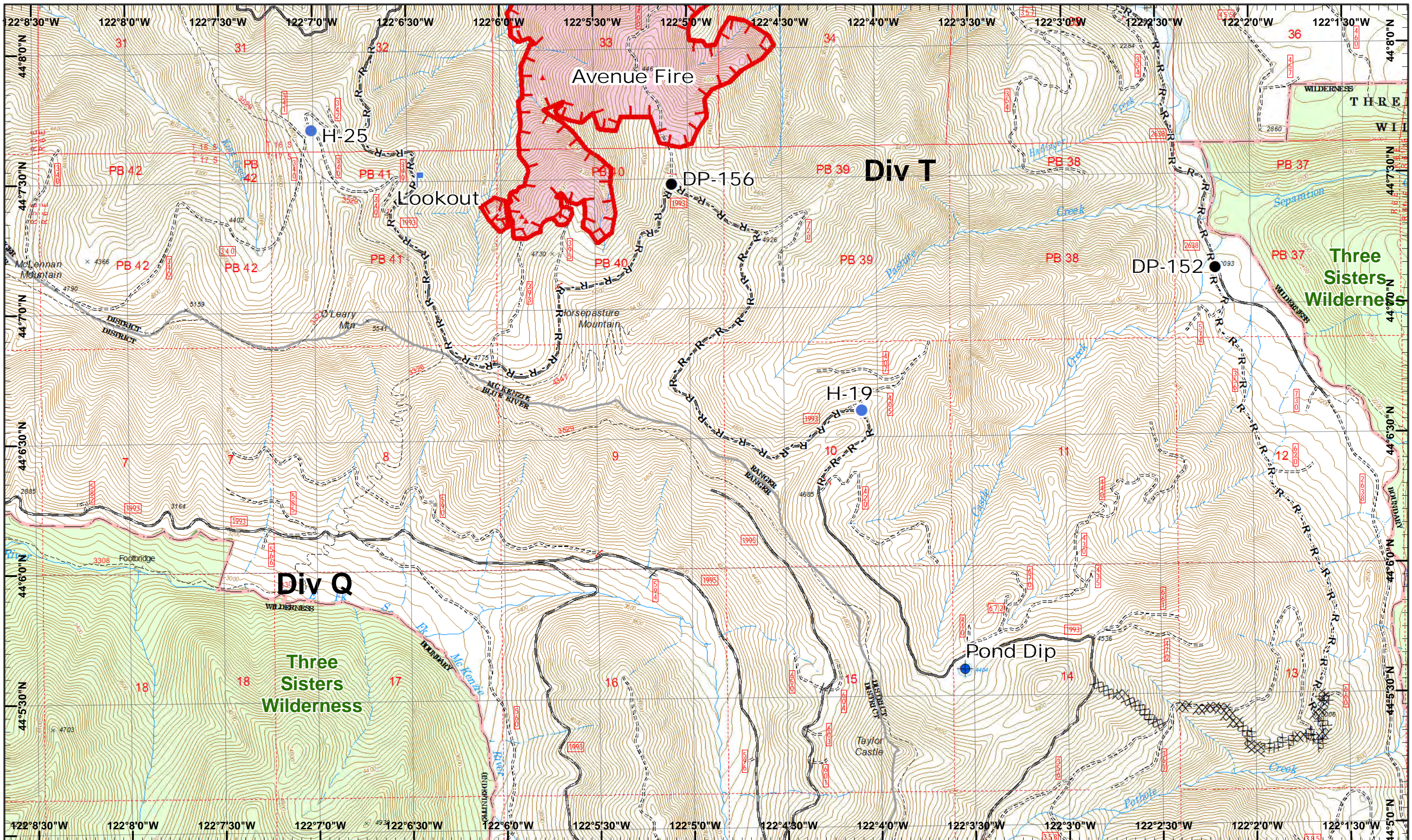


1	2	3
4	5	6
7	8	9
10	11	12
13	14	

Page 3  
 )( Division  
 )( Branch

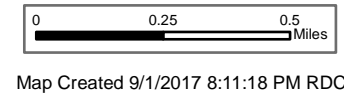






Rebel, Pete  
 Horse Creek  
 September 2, 2017

IR 8/31/2017 @ 2114  
 Rebel Fire - 6,169 Acres  
 Pete Fire - 51 Acres  
 Ollie Lookout Fire - 450 Acres  
 Roney Fire - 1,776 Acres  
 Separation Fire - 4,882 Acres  
 Avenue Fire - 584 Acres  
 Nash Fire - 2,528 Acres



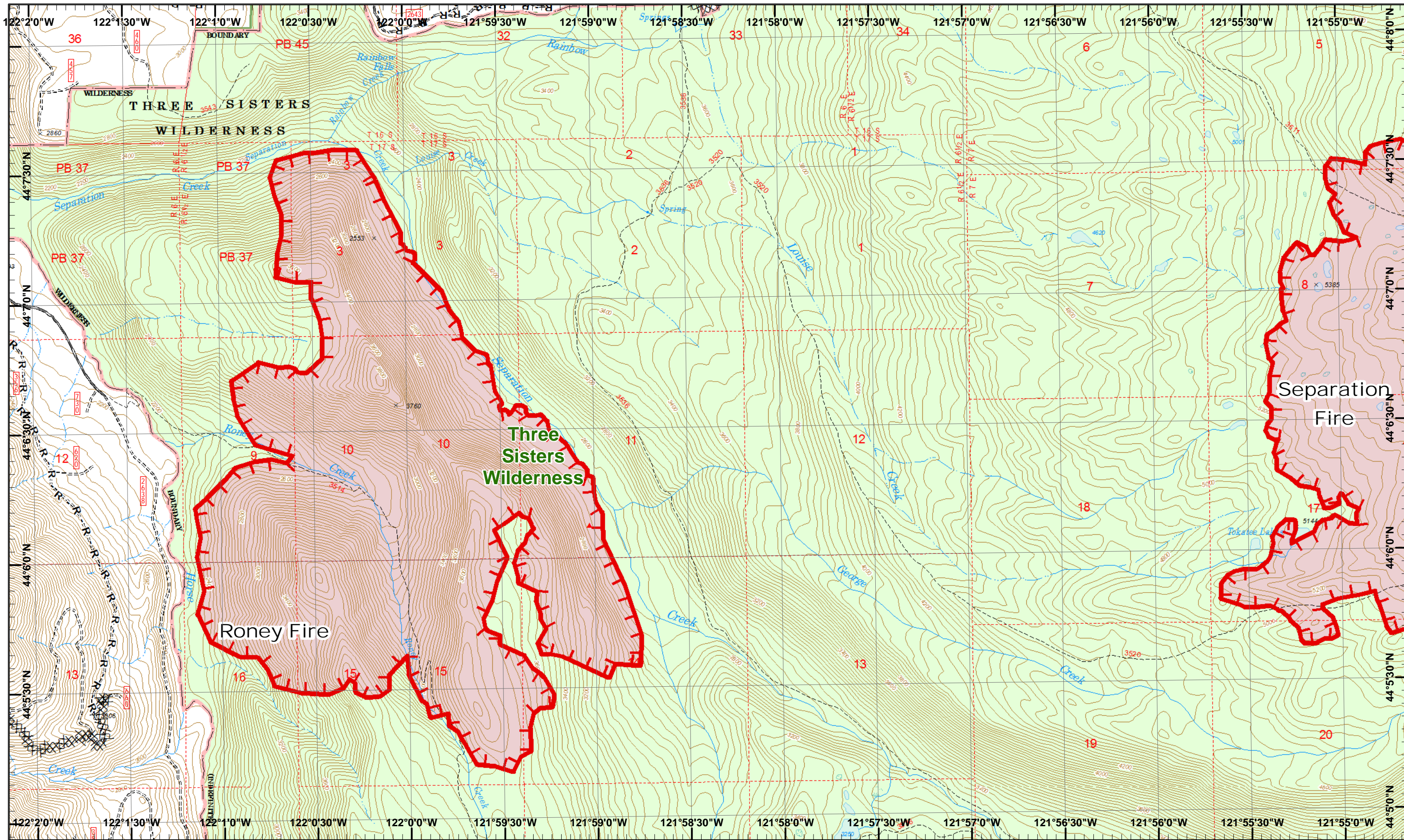
- Dip Site
- Helispot
- Lookout
- IR Heat Source
- Uncontrolled Fire
- Completed Dozer R - Road as Line
- Drop Point



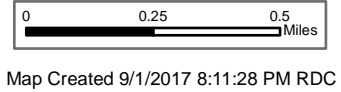
1	2	3
4	5	6
7	8	9
10	11	12
13	14	15







**Rebel, Pete Horse Creek**  
 September 2, 2017  
 IR 8/31/2017 @ 2114  
 Rebel Fire - 6,169 Acres  
 Pete Fire - 51 Acres  
 Challe Lookout Fire - 450 Acres  
 Roney Fire - 1,776 Acres  
 Separation Fire - 4,882 Acres  
 Avenue Fire - 584 Acres  
 Nash Fire - 2,528 Acres



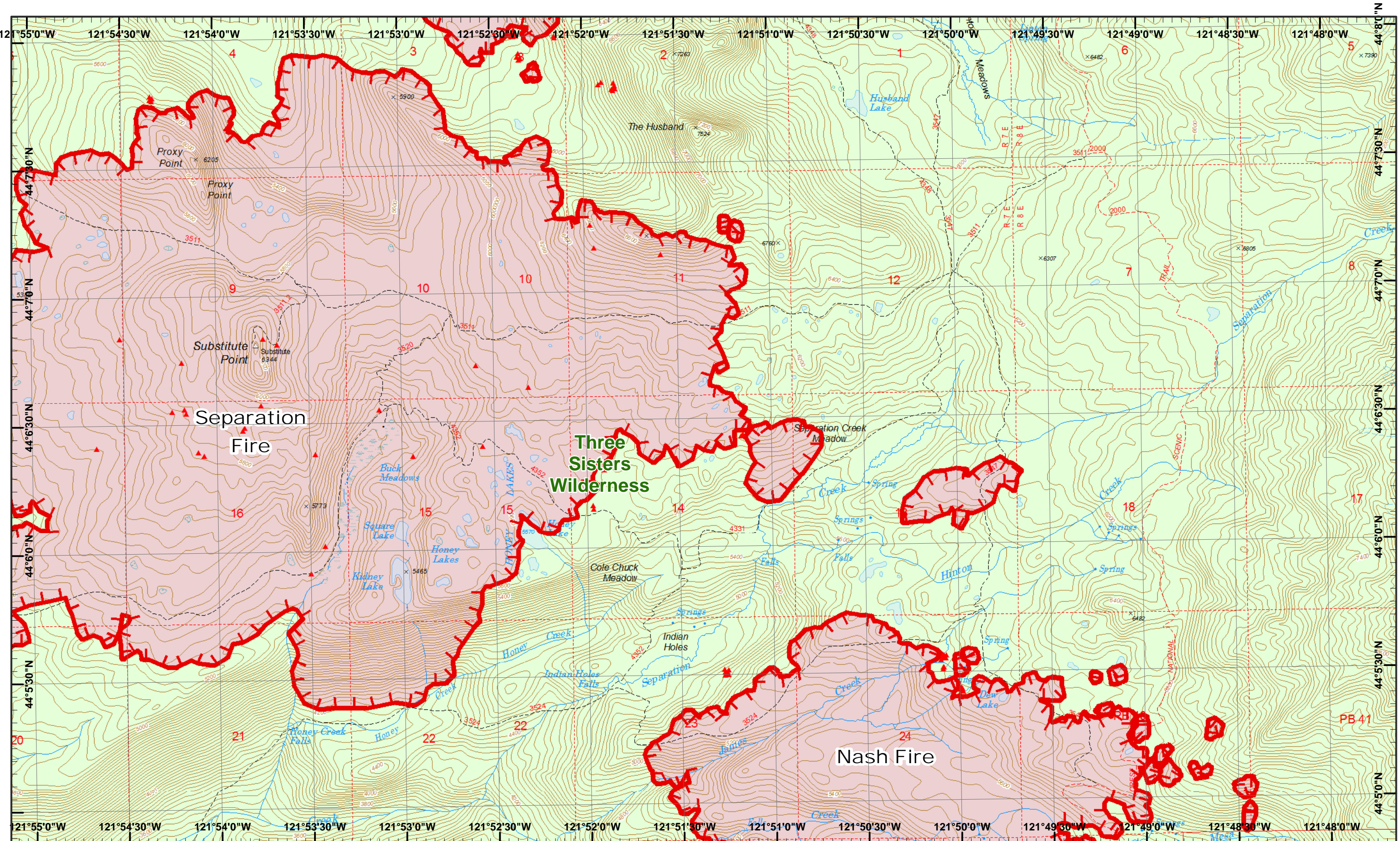
- North
- IR Heat Source
- Uncontrolled Fire
- Road as Line
- Water Source
- Completed Dozer



1	2	3
4	5	6
7	8	9
10	11	12
13	14	15







**Rebel, Pete Horse Creek**  
 September 2, 2017  
 IR 8/31/2017 @ 2114  
 Rebel Fire - 6,169 Acres  
 Pete Fire - 51 Acres  
 Quail Lookout Fire - 450 Acres  
 Roney Fire - 1,776 Acres  
 Separation Fire - 4,882 Acres  
 Avenue Fire - 584 Acres  
 Nash Fire - 2,528 Acres

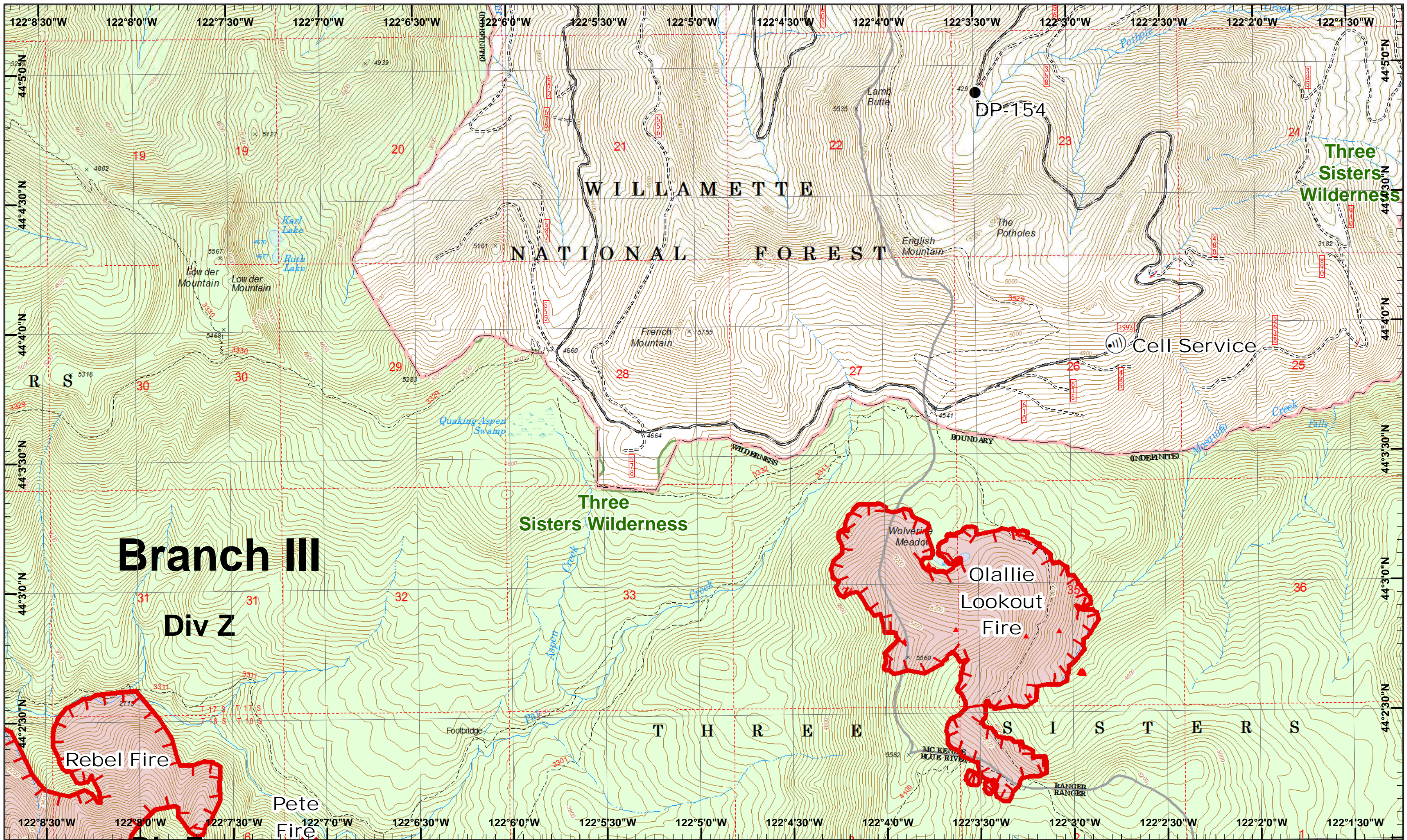
0 0.25 0.5 Miles  
 Map Created 9/1/2017 8:11:37 PM RDC

 IR Heat Source  
 Uncontrolled Fire



1	2	3
4	5	6
7	8	9
10	11	12
13	14	





**Rebel, Pete Horse Creek**  
 September 2, 2017

IR 8/31/2017 @ 2114  
 Rebel Fire - 6,169 Acres  
 Pete Fire - 51 Acres  
 Olallie Lookout Fire - 450 Acres  
 Roney Fire - 1,776 Acres  
 Separation Fire - 4,882 Acres  
 Avenue Fire - 584 Acres  
 Nash Fire - 2,528 Acres

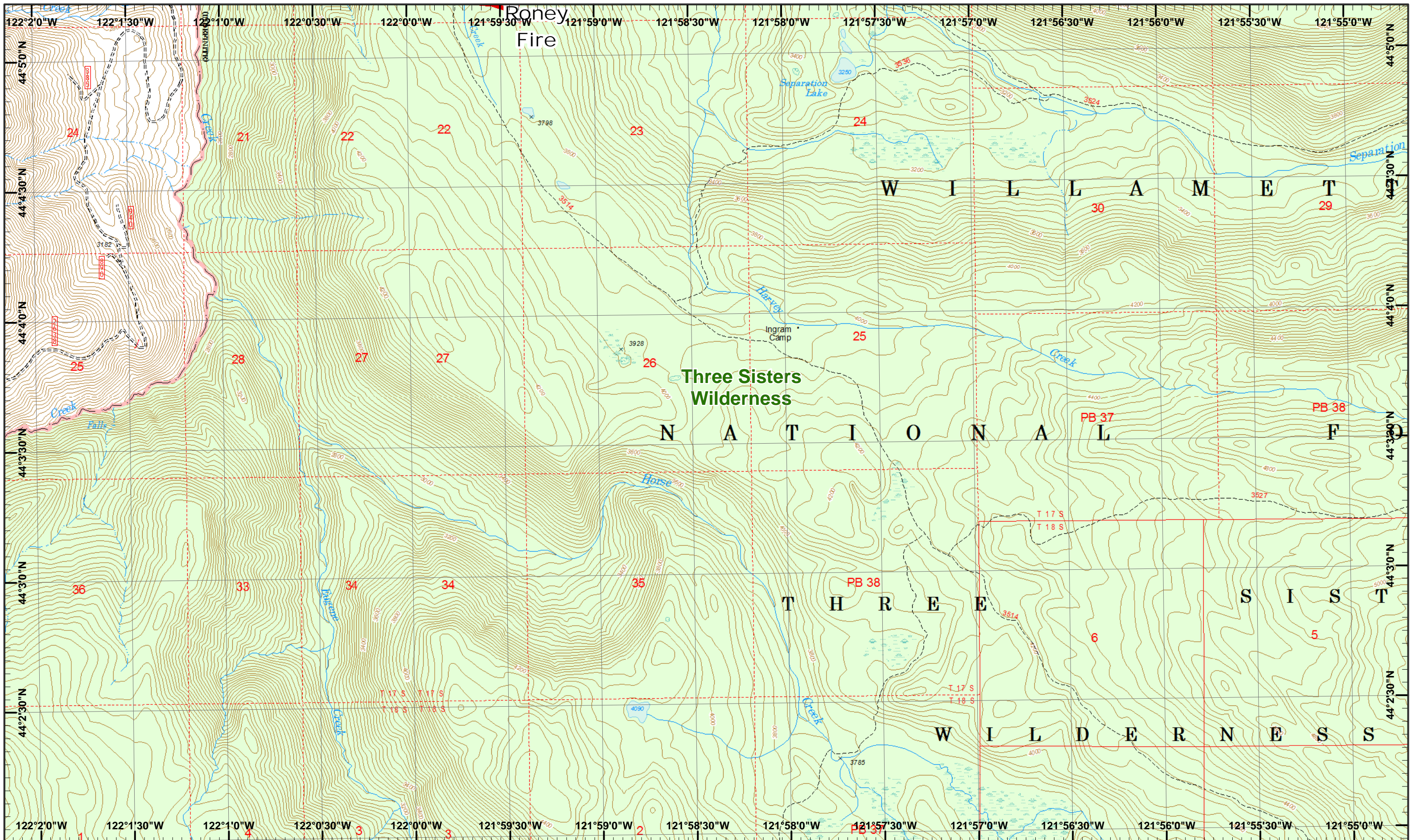
Map Created 9/1/2017 8:11:47 PM RDC

Drop Point  
 Internet Access  
 Uncontrolled Fire  
 IR Heat Source



1	2	3
4	5	6
7	8	9
10	11	12
13	14	15





**Rebel, Pete Horse Creek**  
 September 2, 2017  
 IR 8/31/2017 @ 2114  
 Rebel Fire - 6,169 Acres  
 Pete Fire - 51 Acres  
 Challe Lookout Fire - 450 Acres  
 Roney Fire - 1,776 Acres  
 Separation Fire - 4,882 Acres  
 Avenue Fire - 584 Acres  
 Nash Fire - 2,528 Acres

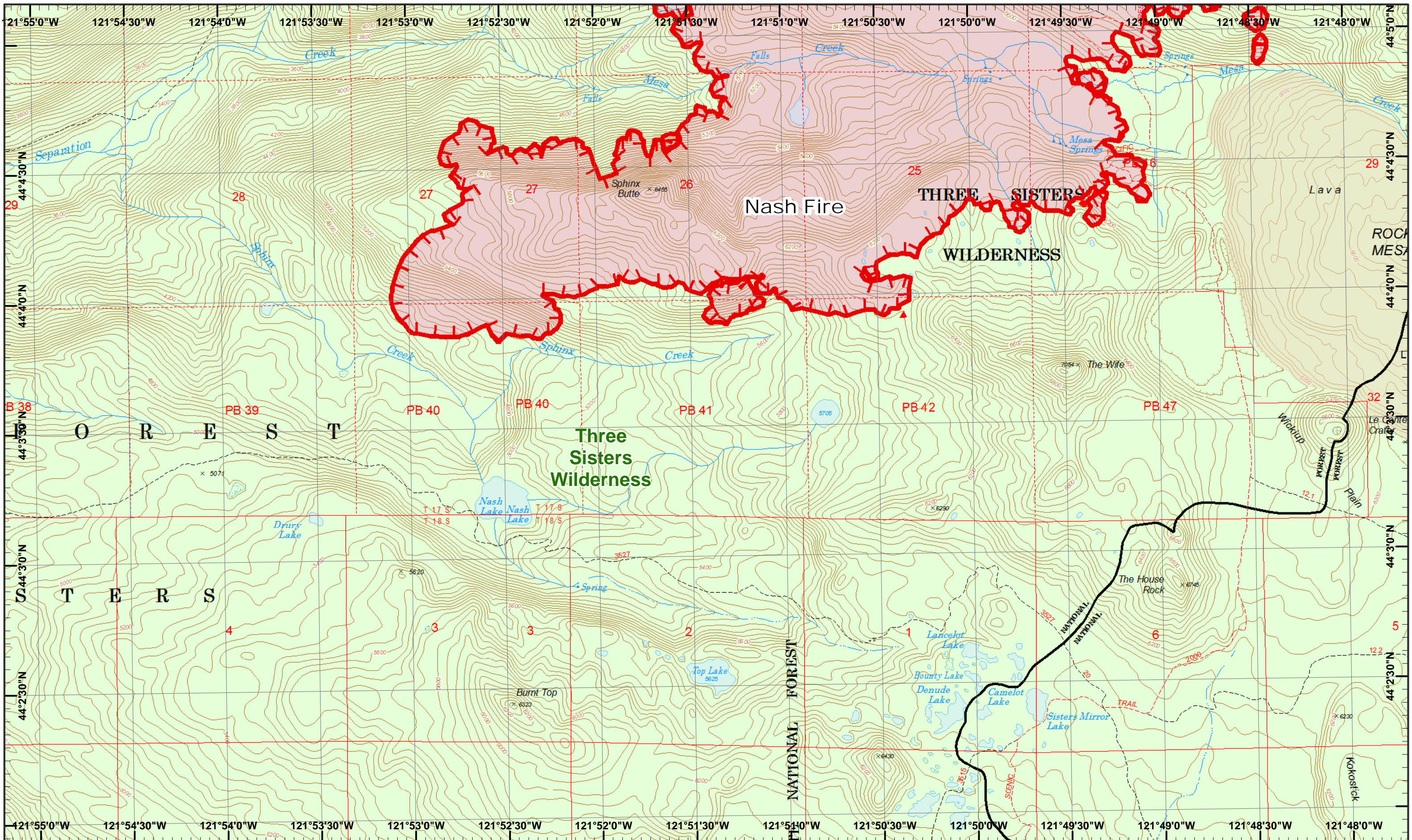
0 0.25 0.5 Miles  
 Map Created 9/1/2017 8:12:00 PM RDC



1	2	3
4	5	6
7	8	9
10	11	12
13	14	







**Rebel, Pete Horse Creek**  
 September 2, 2017  
 IR 8/31/2017 @ 2114  
 Rebel Fire - 6,169 Acres  
 Pete Fire - 51 Acres  
 Challe Lookout Fire - 450 Acres  
 Roney Fire - 1,776 Acres  
 Separation Fire - 4,882 Acres  
 Avenue Fire - 584 Acres  
 Nash Fire - 2,528 Acres

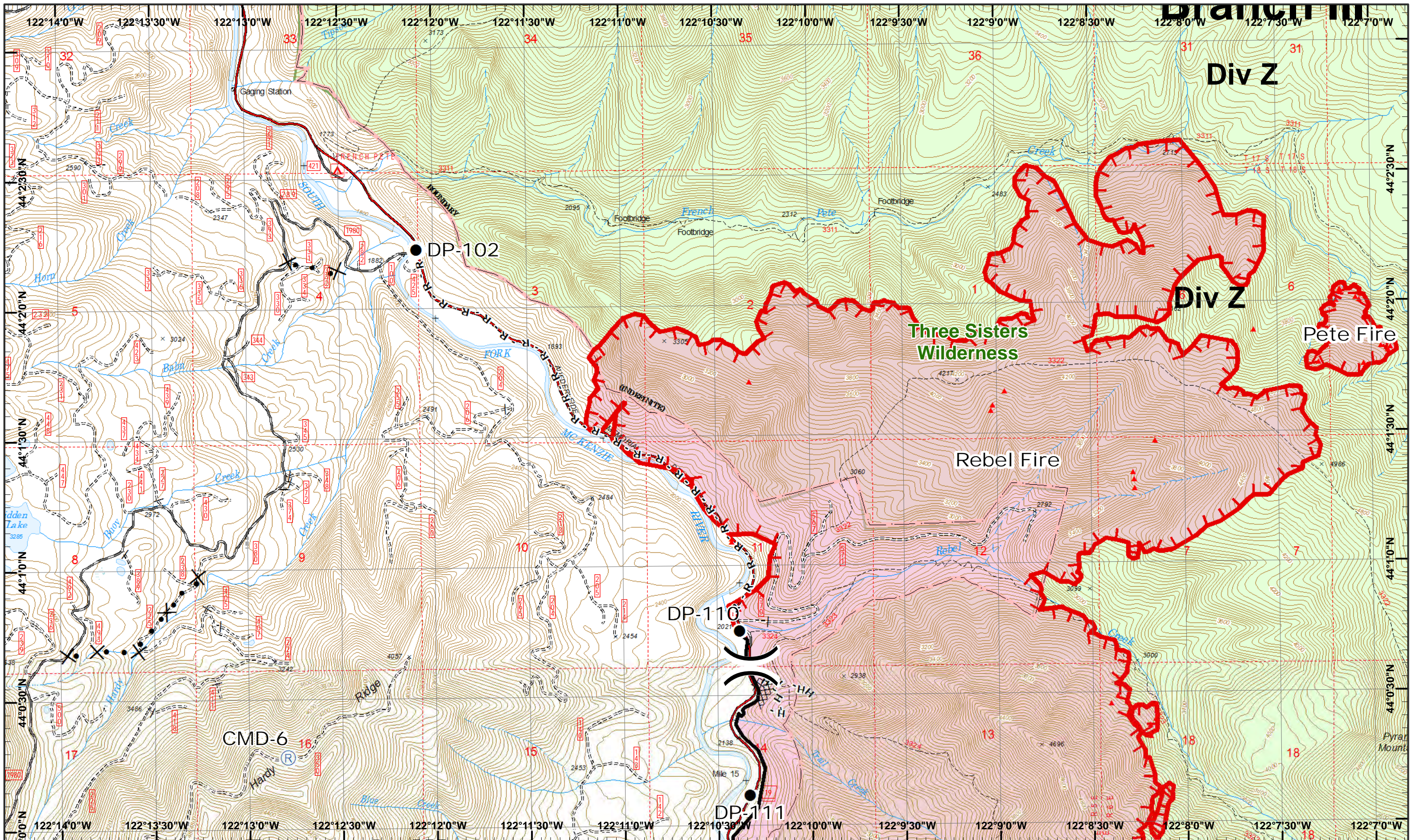
0 0.25 0.5 Miles  
 Map Created 9/1/2017 8:12:10 PM RDC

 IR Heat Source  
 Uncontrolled Fire



1	2	3
4	5	6
7	8	9
10	11	12
13	14	15





**Rebel, Pete  
Horse Creek  
September 2, 2017**

IR 8/31/2017 @ 2114  
 Rebel Fire - 6,169 Acres  
 Pete Fire - 51 Acres  
 Challe Lookout Fire - 450 Acres  
 Roney Fire - 1,776 Acres  
 Separation Fire - 4,882 Acres  
 Avenue Fire - 584 Acres  
 Nash Fire - 2,528 Acres

Map Created 9/1/2017 8:10:07 PM RDC

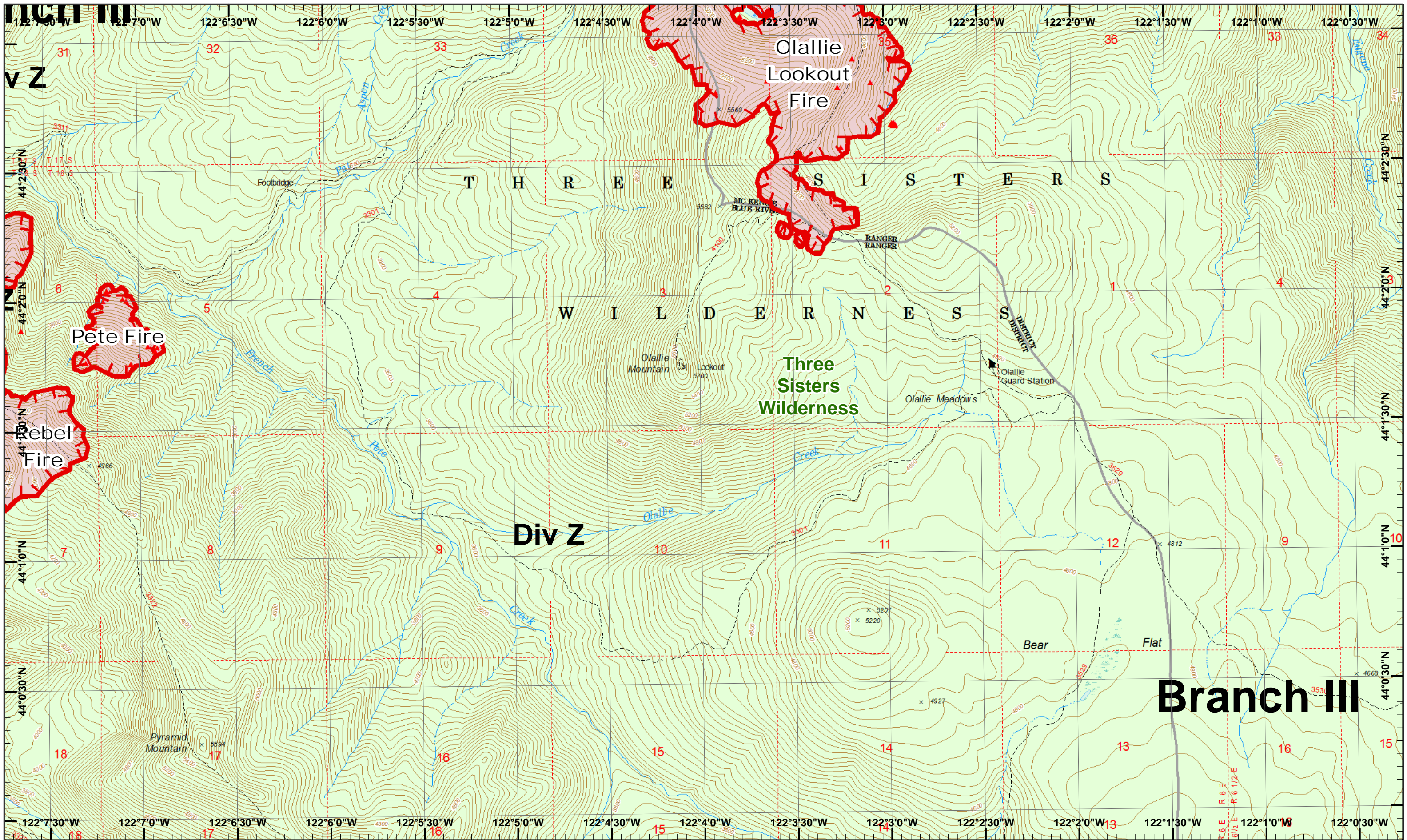
North
 Drop Point
 Repeater
 Water Source
 Completed Hand
 Proposed Dozer

IR Heat Source
 Uncontrolled Fire
 Completed Dozer
 Road as Line



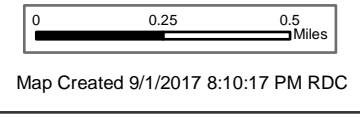
1	2	3
4	5	6
7	8	9
10	11	12
13	14	15





Rebel, Pete  
Horse Creek  
September 2, 2017

IR 8/31/2017 @ 2114  
 Rebel Fire - 6,169 Acres  
 Pete Fire - 51 Acres  
 Olallie Lookout Fire - 450 Acres  
 Roney Fire - 1,776 Acres  
 Separation Fire - 4,882 Acres  
 Avenue Fire - 584 Acres  
 Nash Fire - 2,528 Acres



 IR Heat Source  
 Uncontrolled Fire

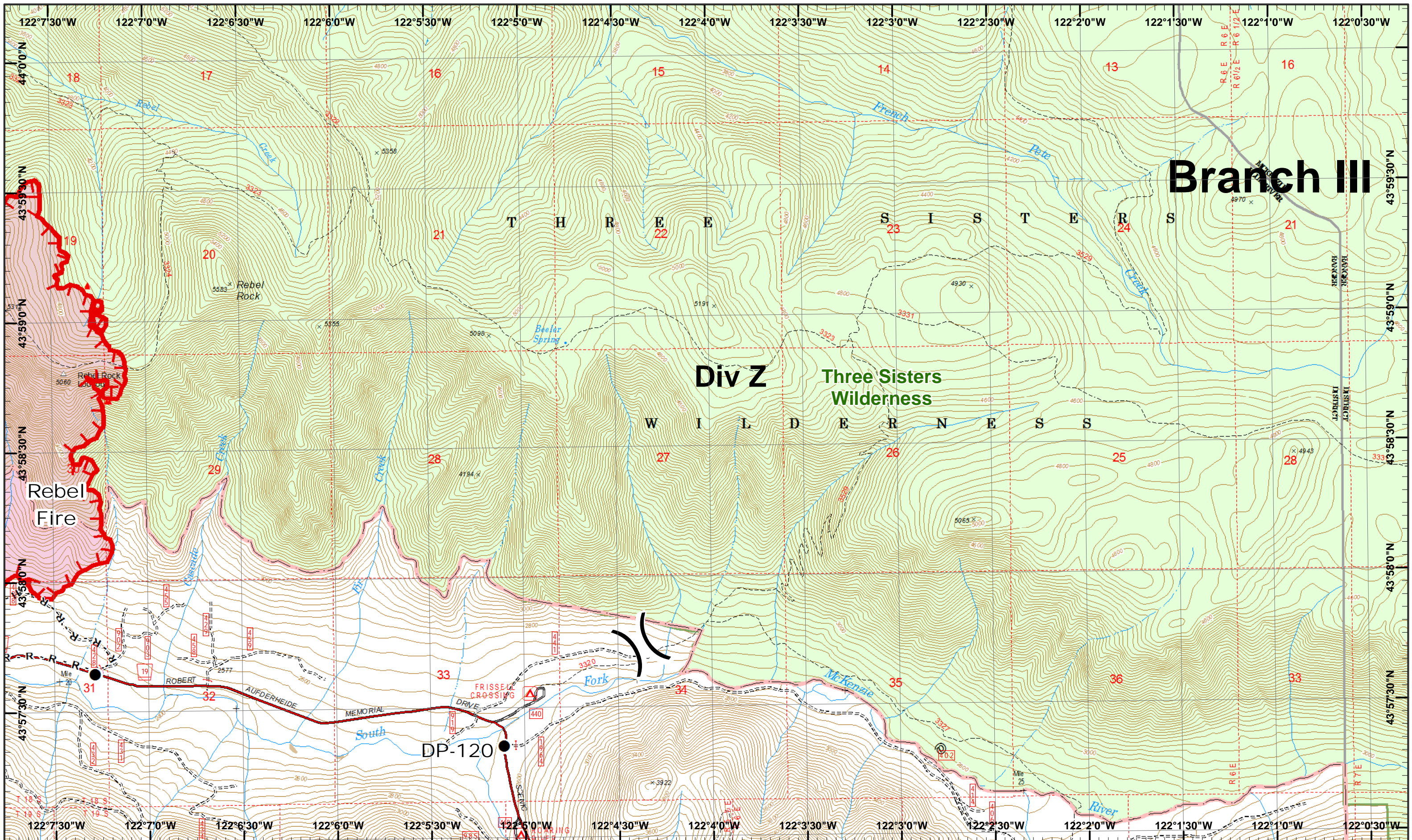


1	2	3
4	5	6
7	8	9
10	11	12
13	14	15



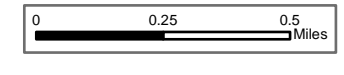






**Rebel, Pete Horse Creek**  
 September 2, 2017

IR 8/31/2017 @ 2114  
 Rebel Fire - 6,169 Acres  
 Pete Fire - 51 Acres  
 Orlie Lookout Fire - 450 Acres  
 Roney Fire - 1,776 Acres  
 Separation Fire - 4,882 Acres  
 Avenue Fire - 584 Acres  
 Nash Fire - 2,528 Acres

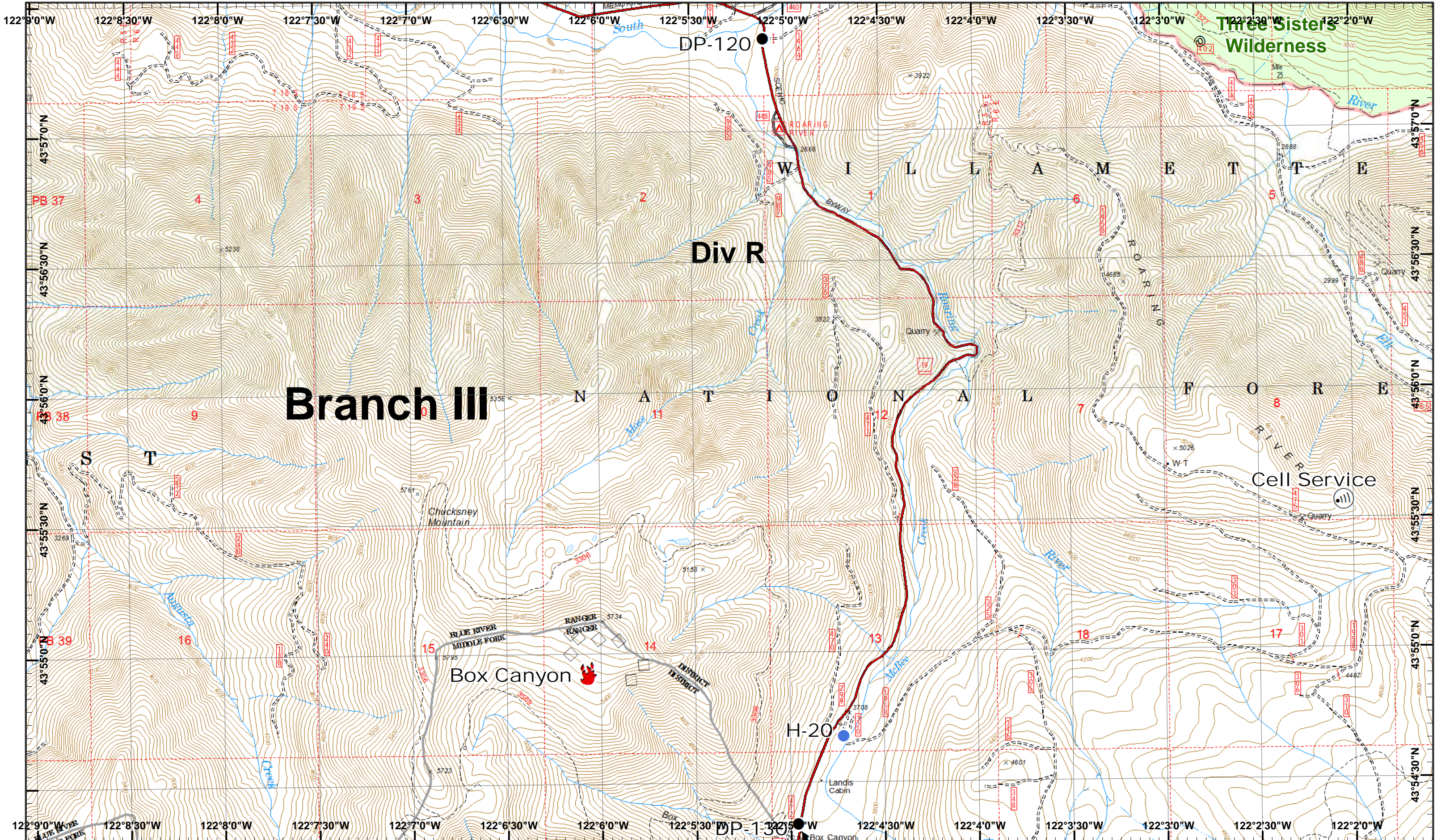


- North
- Drop Point
- Uncontrolled Fire
- Road as Line
- IR Heat Source
- Completed Hand



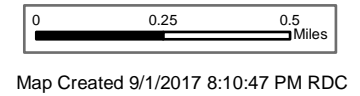
1	2	3
4	5	6
7	8	9
10	11	12
13	14	15





# Branch III

**Rebel, Pete Horse Creek**  
 September 2, 2017  
 IR 8/31/2017 @ 2114  
 Rebel Fire - 6,169 Acres  
 Pete Fire - 51 Acres  
 Challe Lookout Fire - 450 Acres  
 Roney Fire - 1,776 Acres  
 Separation Fire - 4,882 Acres  
 Avenue Fire - 584 Acres  
 Nash Fire - 2,528 Acres



- North
- Drop Point
- Fire Location
- Helispot
- Internet Access
- Aerial Retardant Drop



1	2	3
4	5	6
7	8	9
10	11	12
13	14	15