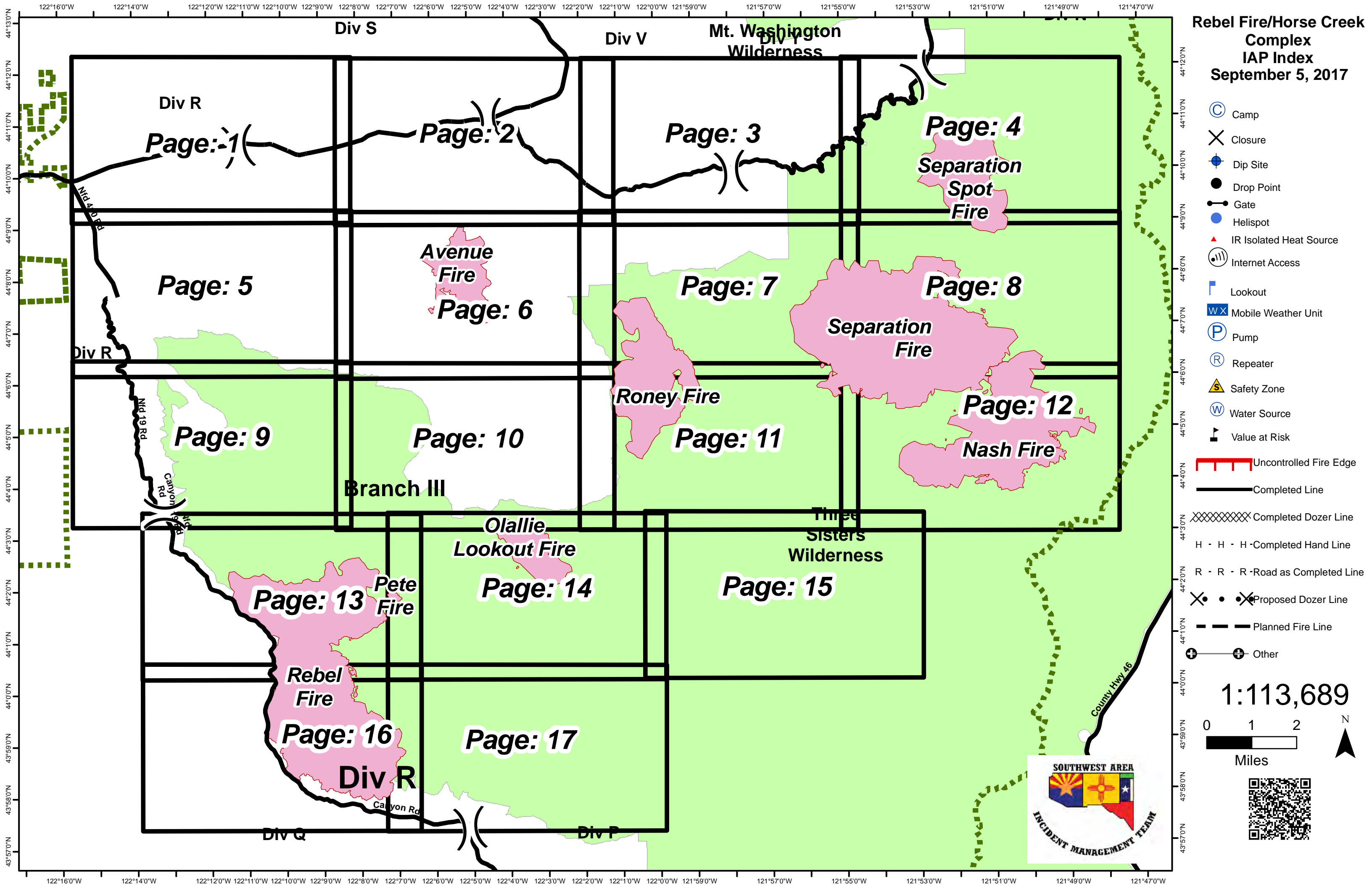


Rebel Fire/Horse Creek Complex IAP Index
September 5, 2017



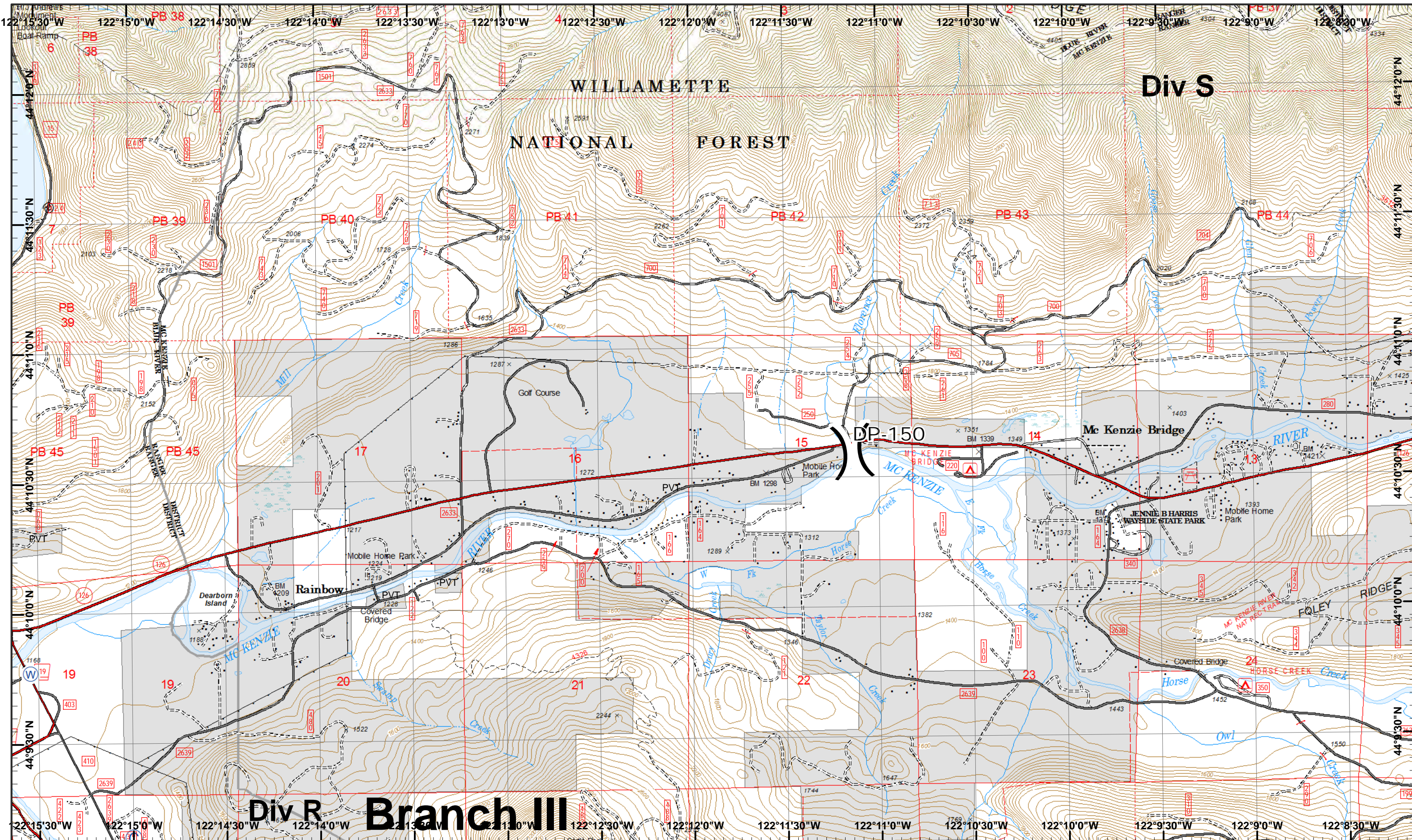
- Ⓒ Camp
- ✕ Closure
- Dip Site
- Drop Point
- ⌋ Gate
- Helispot
- ▲ IR Isolated Heat Source
- Ⓜ Internet Access
- Ⓛ Lookout
- Ⓜ WX Mobile Weather Unit
- Ⓟ Pump
- Ⓡ Repeater
- ⚠ Safety Zone
- Ⓜ Water Source
- ⚠ Value at Risk
- ▬ Uncontrolled Fire Edge
- ▬ Completed Line
- ▬ Completed Dozer Line
- H - H - H Completed Hand Line
- R - R - R Road as Completed Line
- ✕ Proposed Dozer Line
- ▬ Planned Fire Line
- ⊕ Other

1:113,689

0 1 2 Miles

N









Rebel, Pete
Horse Creek
 September 5, 2017

GIS Est. 9/4/2017 1600
 Rebel Fire - 7,354 Acres
 Pete Fire - 51 Acres
 Orlie Lookout Fire - 832 Acres
 Roney Fire - 2,483 Acres
 Separation Fire - 8,958 Acres
 Avenue Fire - 1,196 Acres
 Nash Fire - 3,994 Acres

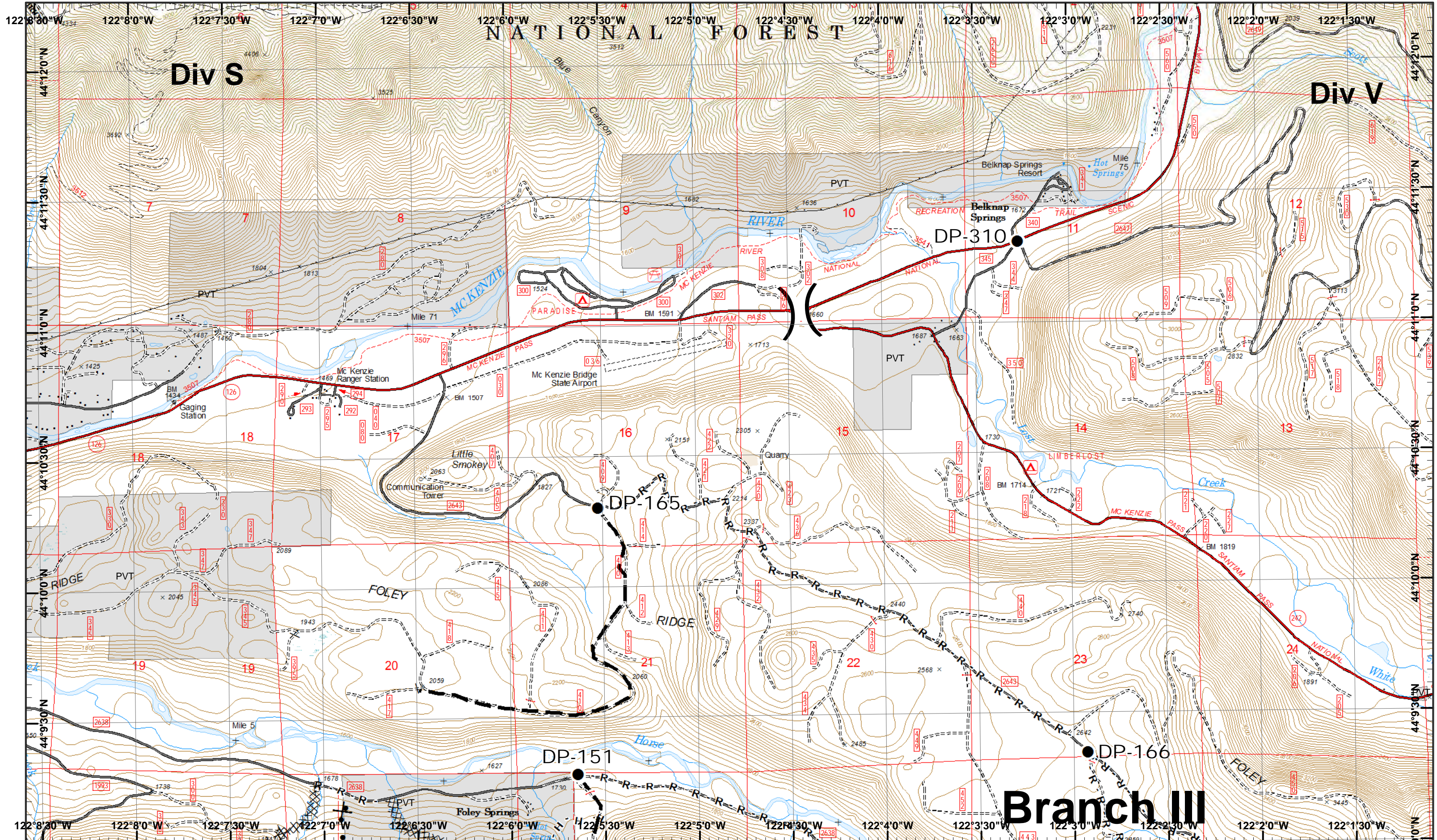
Map Created 9/4/2017 7:57:29 PM RDC





 Camp ● Drop Point (W) Water Source



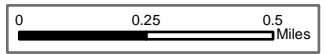
| | | | |
|----|----|----|----|
| 1 | 2 | 3 | 4 |
| 5 | 6 | 7 | 8 |
| 9 | 10 | 11 | 12 |
| 13 | 14 | 15 | |
| 16 | 17 | | |





Rebel, Pete
Horse Creek
September 5, 2017

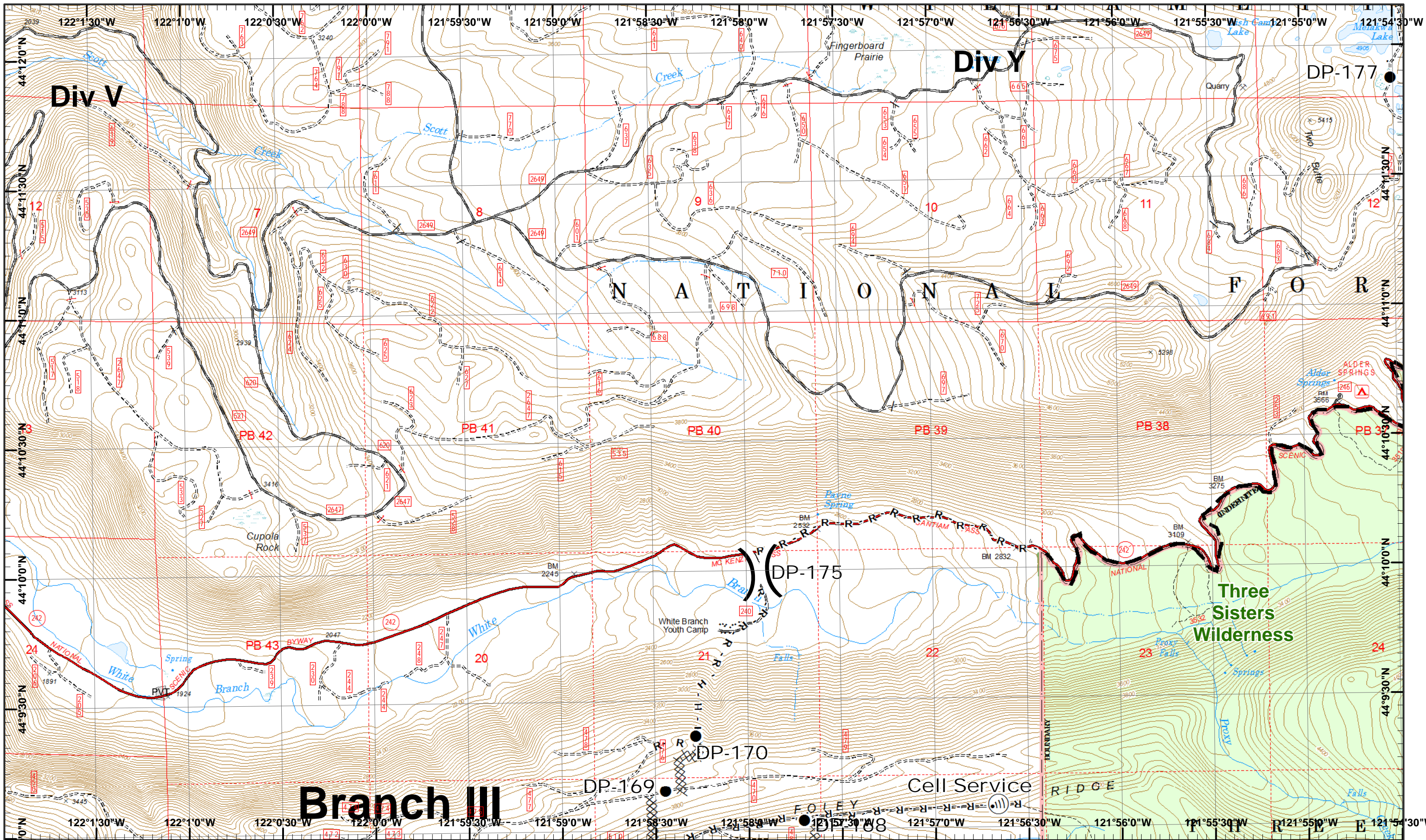
GIS Est. 9/4/2017 1600
 Rebel Fire - 7,354 Acres
 Pete Fire - 51 Acres
 Oatlie Lookout Fire - 832 Acres
 Roney Fire - 2,483 Acres
 Separation Fire - 8,958 Acres
 Avenue Fire - 1,196 Acres
 Nash Fire - 3,994 Acres



Drop Point
 Completed Hand
 Proposed Dozer
 Completed Dozer
 Road as Line
 Planned Fire Line



| | | | |
|----|----|----|----|
| 1 | 2 | 3 | 4 |
| 5 | 6 | 7 | 8 |
| 9 | 10 | 11 | 12 |
| 13 | 14 | 15 | 16 |
| 17 | 18 | 19 | 20 |



Rebel, Pete
 Horse Creek
 September 5, 2017

GIS Est. 9/4/2017 1600
 Rebel Fire - 7,354 Acres
 Pete Fire - 51 Acres
 Challe Lookout Fire - 832 Acres
 Roney Fire - 2,483 Acres
 Separation Fire - 8,958 Acres
 Avenue Fire - 1,196 Acres
 Nash Fire - 3,994 Acres
 Map Created 9/4/2017 7:59:05 PM RDC



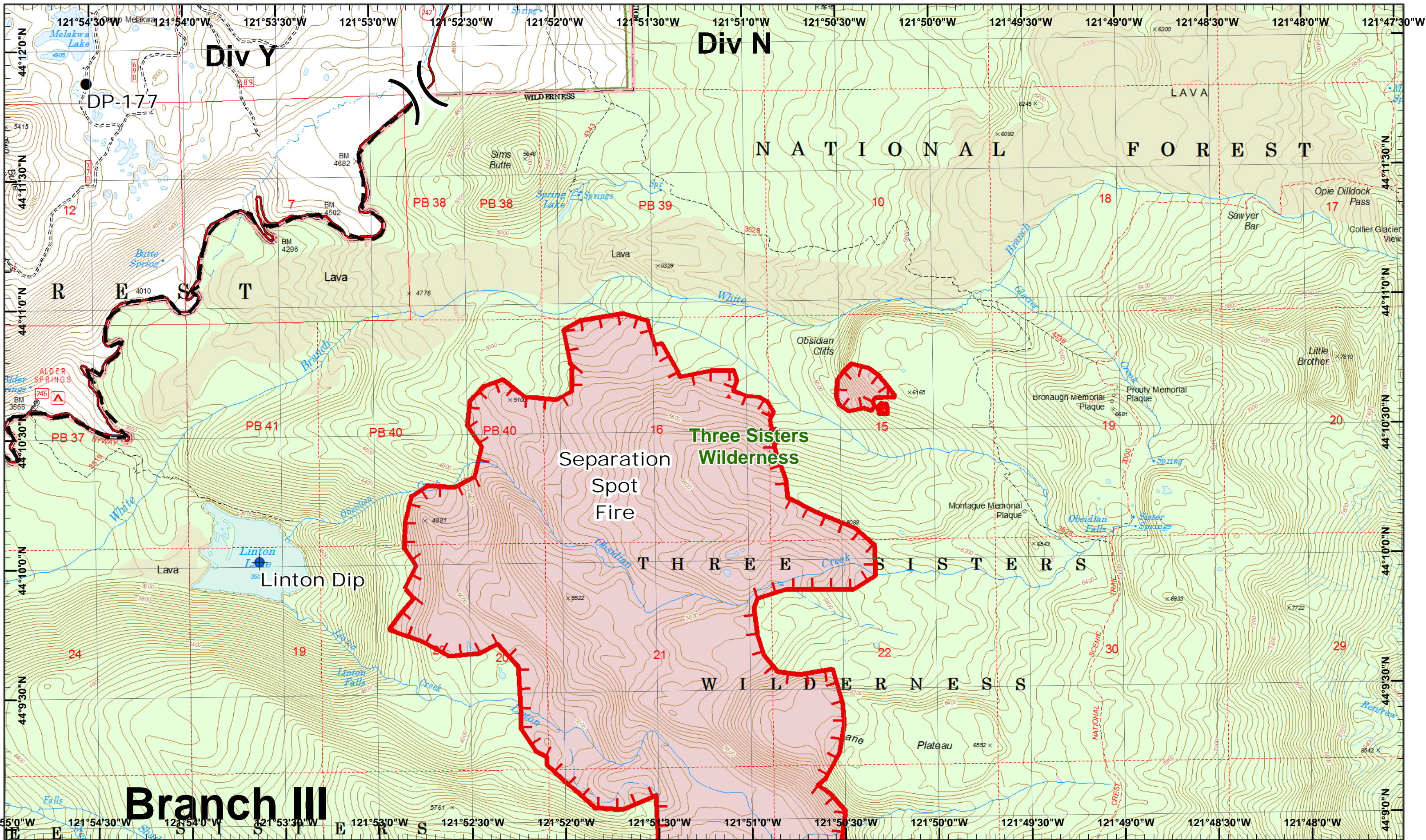
Drop Point (●) Internet Access (Ⓜ) Completed Dozer R - Road as Line (XXX)
 H - Completed Hand (H) Planned Fire Line (—)



| | | | |
|----|----|----|----|
| 1 | 2 | 3 | 4 |
| 5 | 6 | 7 | 8 |
| 9 | 10 | 11 | 12 |
| 13 | 14 | 15 | |
| 16 | 17 | | |

Page 3
 () Division
 [] Branch





Rebel, Pete Horse Creek
 September 5, 2017

GIS Est. 9/4/2017 1600
 Rebel Fire - 7,354 Acres
 Pete Fire - 51 Acres
 Ollie Lookout Fire - 832 Acres
 Roney Fire - 2,483 Acres
 Separation Fire - 8,958 Acres
 Avenue Fire - 1,196 Acres
 Nash Fire - 3,994 Acres

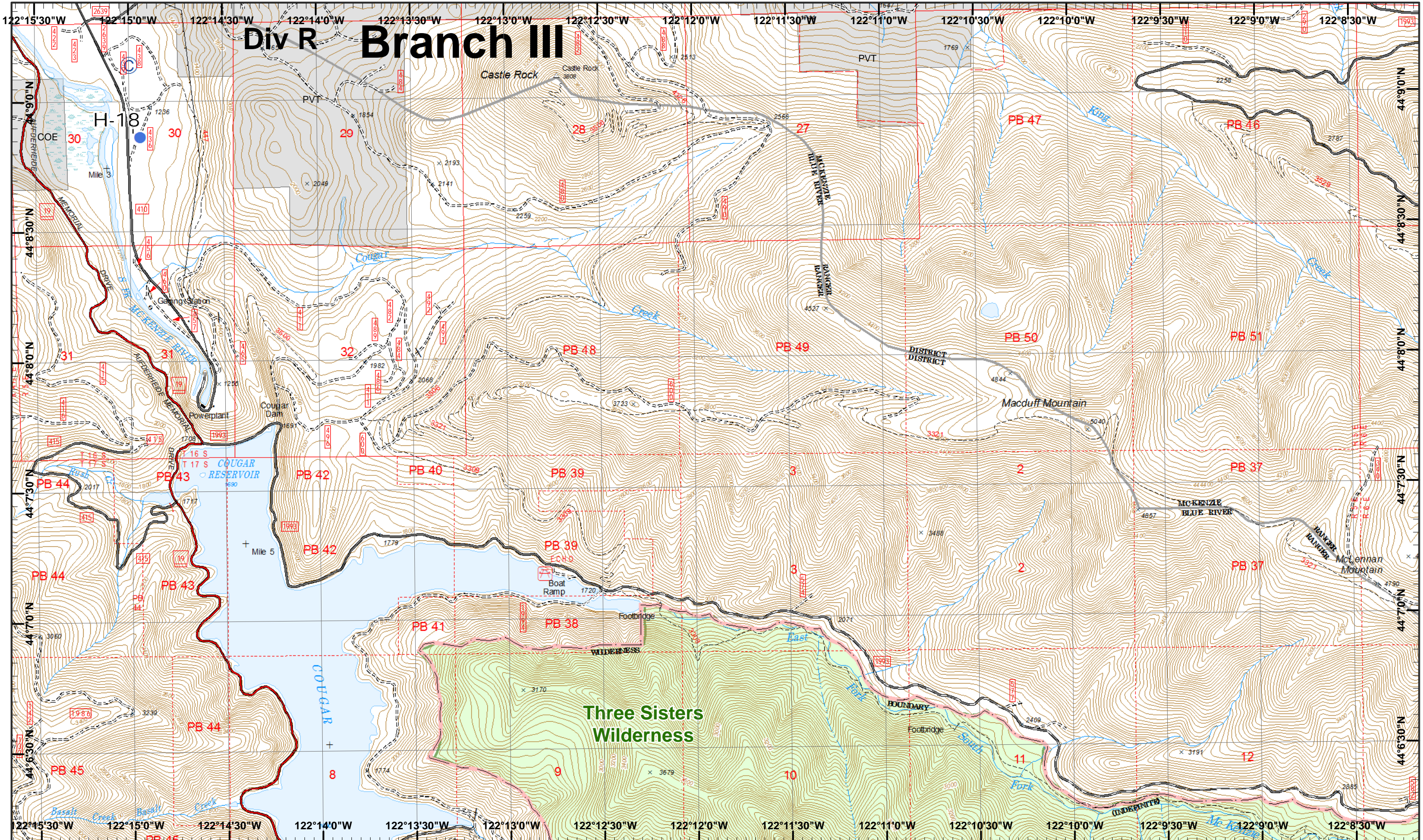
Map Created 9/4/2017 7:59:14 PM RDC

Dip Site
 IR Heat Source
 Planned Fire Line
 Uncontrolled Fire
 Drop Point



| | | | |
|----|----|----|----|
| 1 | 2 | 3 | 4 |
| 5 | 6 | 7 | 8 |
| 9 | 10 | 11 | 12 |
| 13 | 14 | 15 | 16 |
| 16 | 17 | | |

Div R Branch III



Rebel, Pete
Horse Creek
September 5, 2017

GIS Est. 9/4/2017 1600
Rebel Fire - 7,354 Acres
Pete Fire - 51 Acres
Challie Lookout Fire - 832 Acres
Roney Fire - 2,483 Acres
Separation Fire - 8,958 Acres
Avenue Fire - 1,196 Acres
Nash Fire - 3,994 Acres

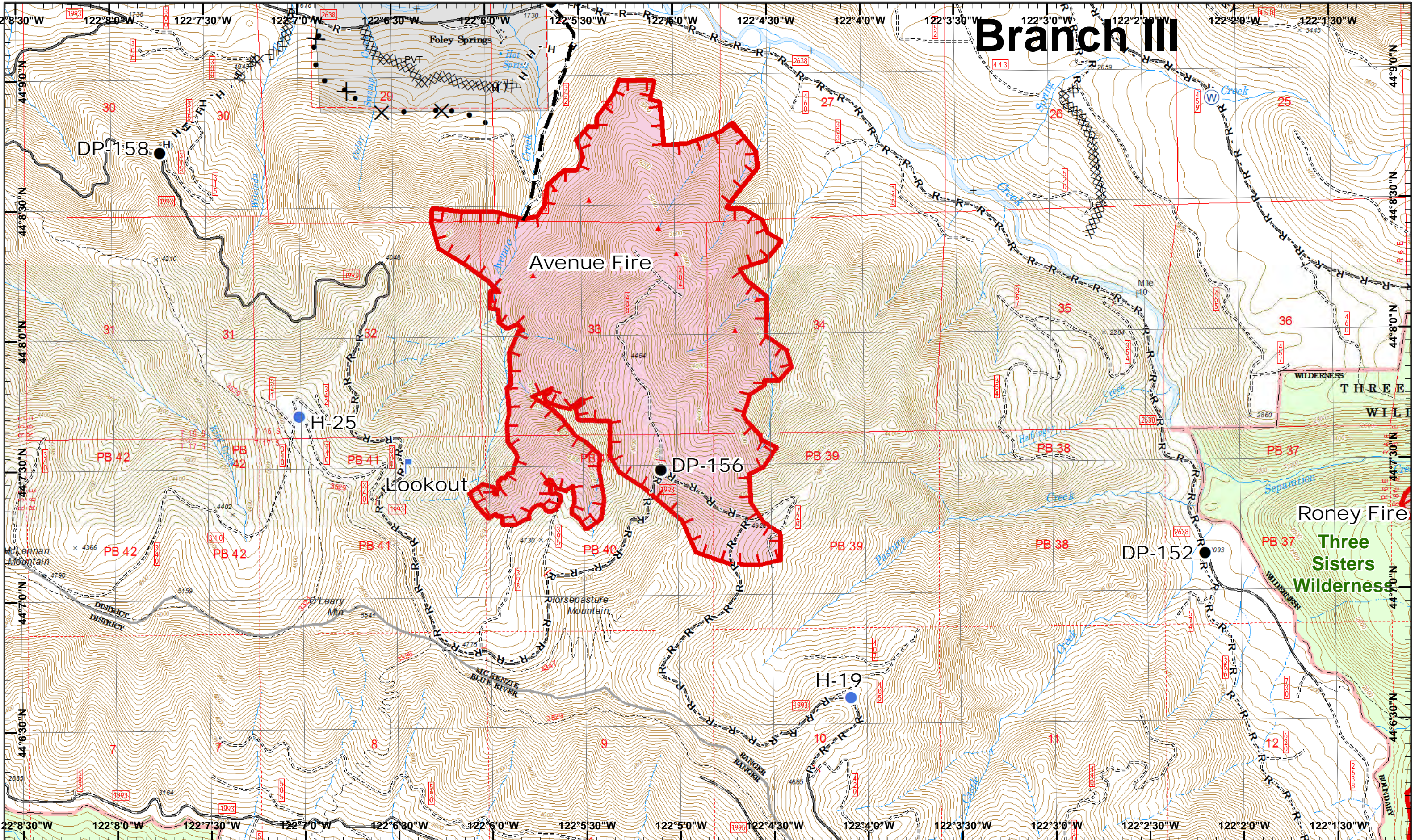
Map Created 9/4/2017 7:59:24 PM RDC

© Camp ● Helispot



| | | | |
|----|----|----|----|
| 1 | 2 | 3 | 4 |
| 5 | 6 | 7 | 8 |
| 9 | 10 | 11 | 12 |
| 13 | 14 | 15 | |
| 16 | 17 | | |

Branch III



Rebel, Pete Horse Creek
September 5, 2017

GIS Est. 9/4/2017 1600
Rebel Fire - 7,354 Acres
Pete Fire - 51 Acres
Ollie Lookout Fire - 832 Acres
Roney Fire - 2,483 Acres
Separation Fire - 8,958 Acres
Avenue Fire - 1,196 Acres
Nash Fire - 3,994 Acres

Map Created 9/4/2017 7:59:35 PM RDC

0 0.25 0.5 Miles

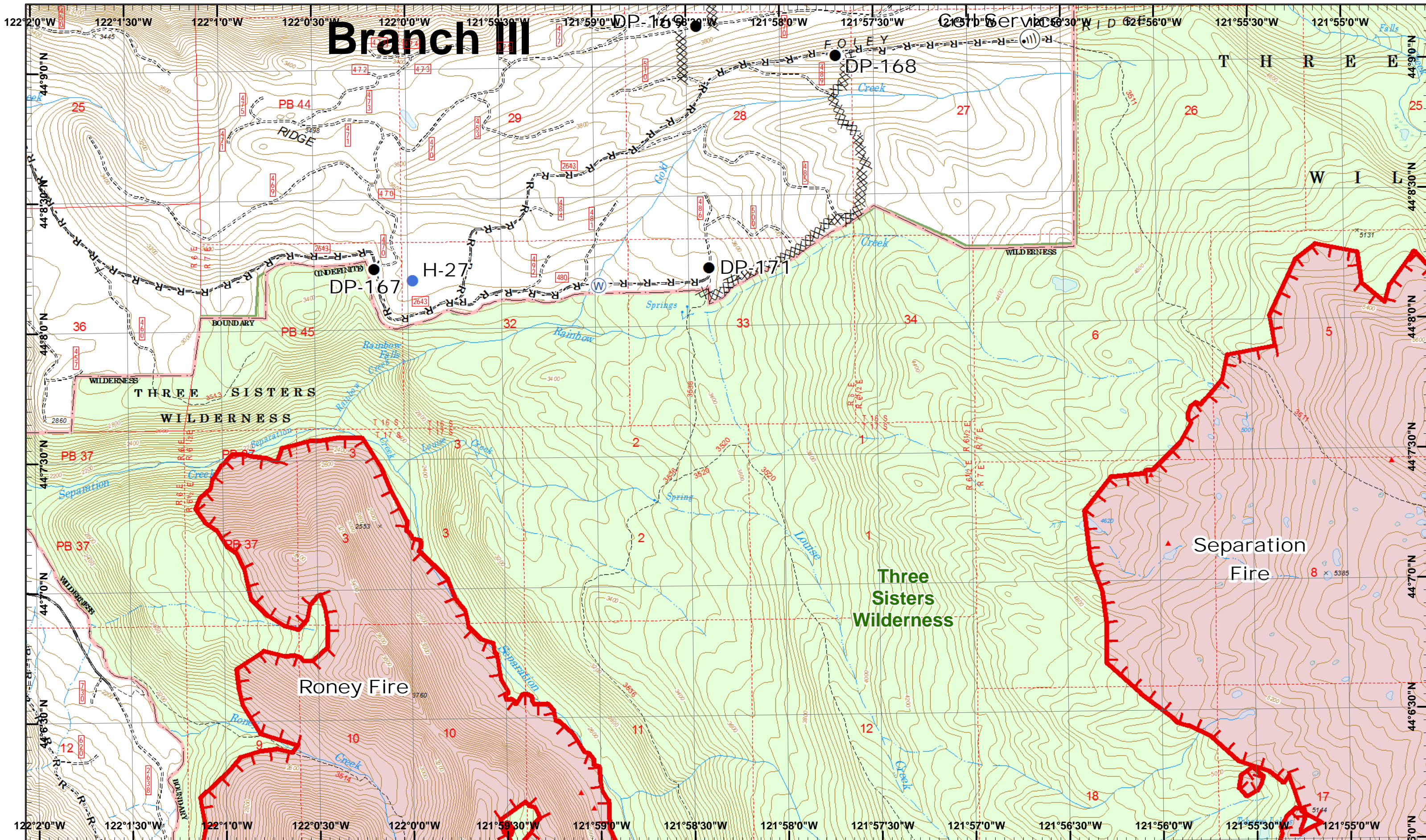
- Drop Point
- ▲ IR Heat Source
- Ⓜ Water Source
- Helispot
- Ⓛ Lookout
- ▭ Uncontrolled Fire



| | | | |
|----|----|----|----|
| 1 | 2 | 3 | 4 |
| 5 | 6 | 7 | 8 |
| 9 | 10 | 11 | 12 |
| 13 | 14 | 15 | 16 |
| 17 | | | |



Branch III



Rebel, Pete
Horse Creek
September 5, 2017

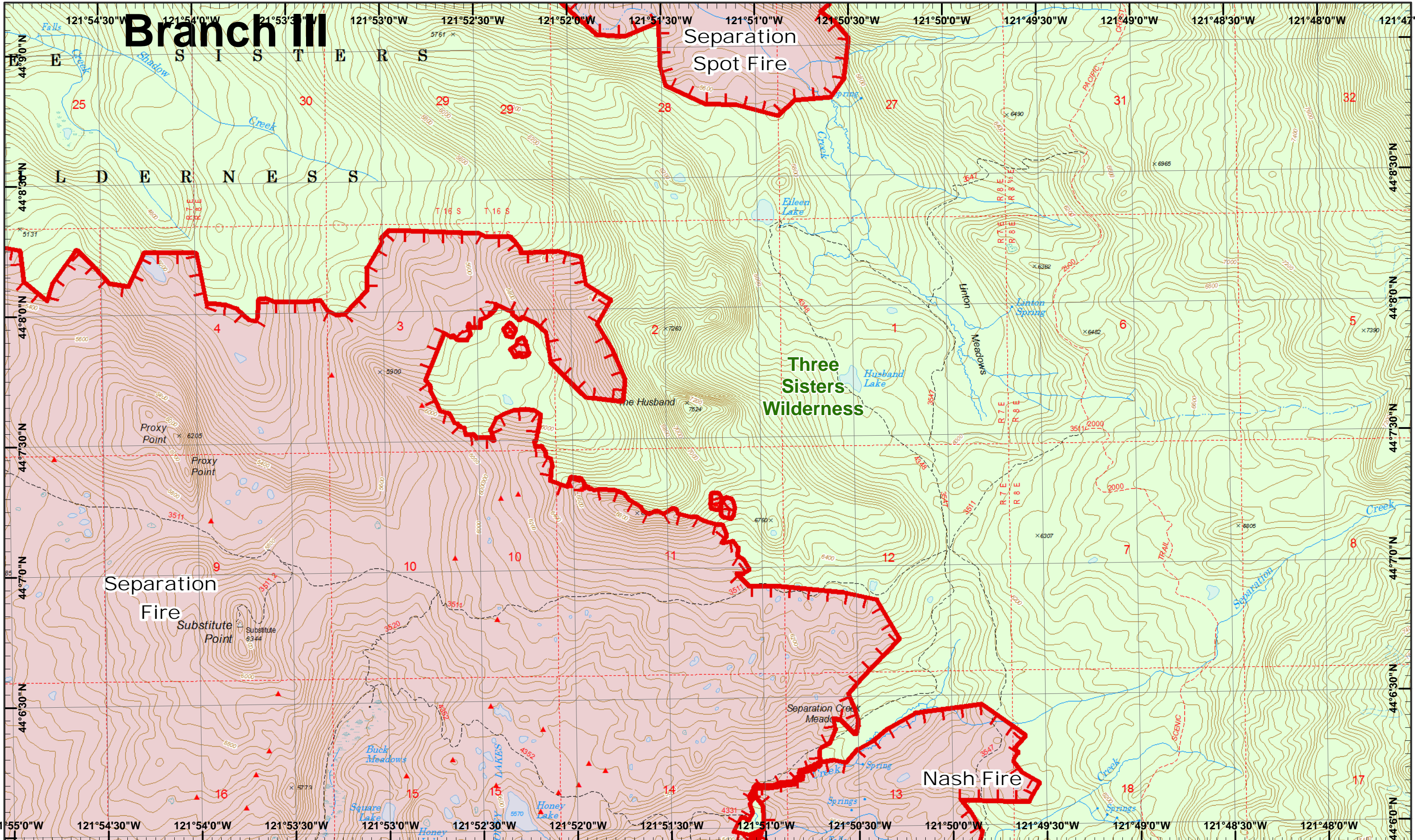
GIS Est. 9/4/2017 1600
Rebel Fire - 7,354 Acres
Pete Fire - 51 Acres
Ossie Lookout Fire - 832 Acres
Roney Fire - 2,483 Acres
Separation Fire - 8,958 Acres
Avenue Fire - 1,196 Acres
Nash Fire - 3,994 Acres
Map Created 9/4/2017 7:59:45 PM RDC

- Drop Point
- IR Heat Source
- Internet Access
- Water Source
- Completed Dozer R - Road as Line
- Helispot
- Uncontrolled Fire



| | | | |
|----|----|----|----|
| 1 | 2 | 3 | 4 |
| 5 | 6 | 7 | 8 |
| 9 | 10 | 11 | 12 |
| 13 | 14 | 15 | 16 |
| 17 | | | |





Rebel, Pete Horse Creek
 September 5, 2017

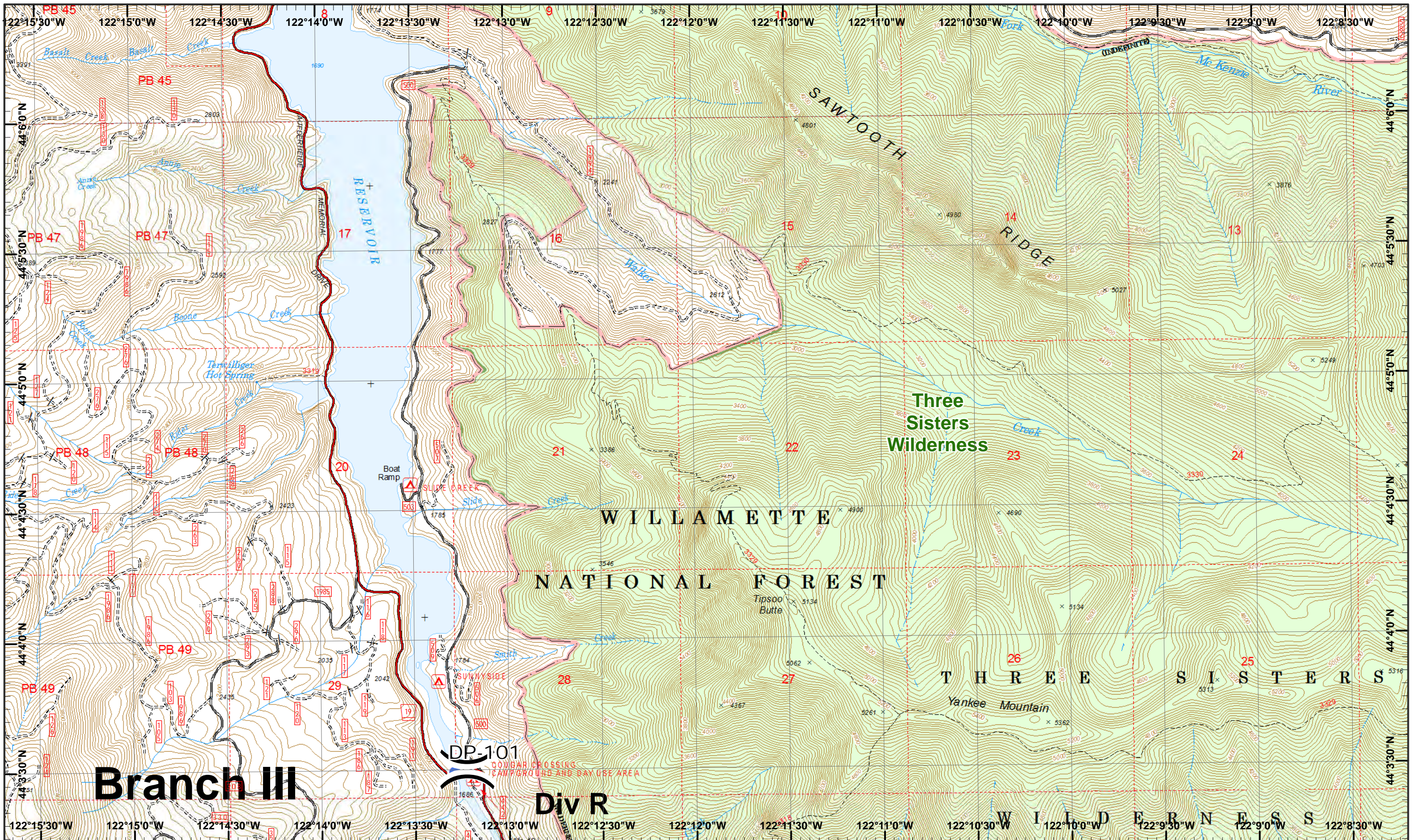
GIS Est. 9/4/2017 1600
 Rebel Fire - 7,354 Acres
 Pete Fire - 51 Acres
 Ollie Lookout Fire - 832 Acres
 Roney Fire - 2,483 Acres
 Separation Fire - 8,958 Acres
 Avenue Fire - 1,196 Acres
 Nash Fire - 3,994 Acres

Map Created 9/4/2017 7:59:53 PM RDC

IR Heat Source
 Uncontrolled Fire




| | | | |
|----|----|----|----|
| 1 | 2 | 3 | 4 |
| 5 | 6 | 7 | 8 |
| 9 | 10 | 11 | 12 |
| 13 | 14 | 15 | |
| 16 | 17 | | |



Rebel, Pete
Horse Creek
 September 5, 2017

GIS Est. 9/4/2017 1600
 Rebel Fire - 7,354 Acres
 Pete Fire - 51 Acres
 Challe Lookout Fire - 832 Acres
 Roney Fire - 2,483 Acres
 Separation Fire - 8,958 Acres
 Avenue Fire - 1,196 Acres
 Nash Fire - 3,994 Acres

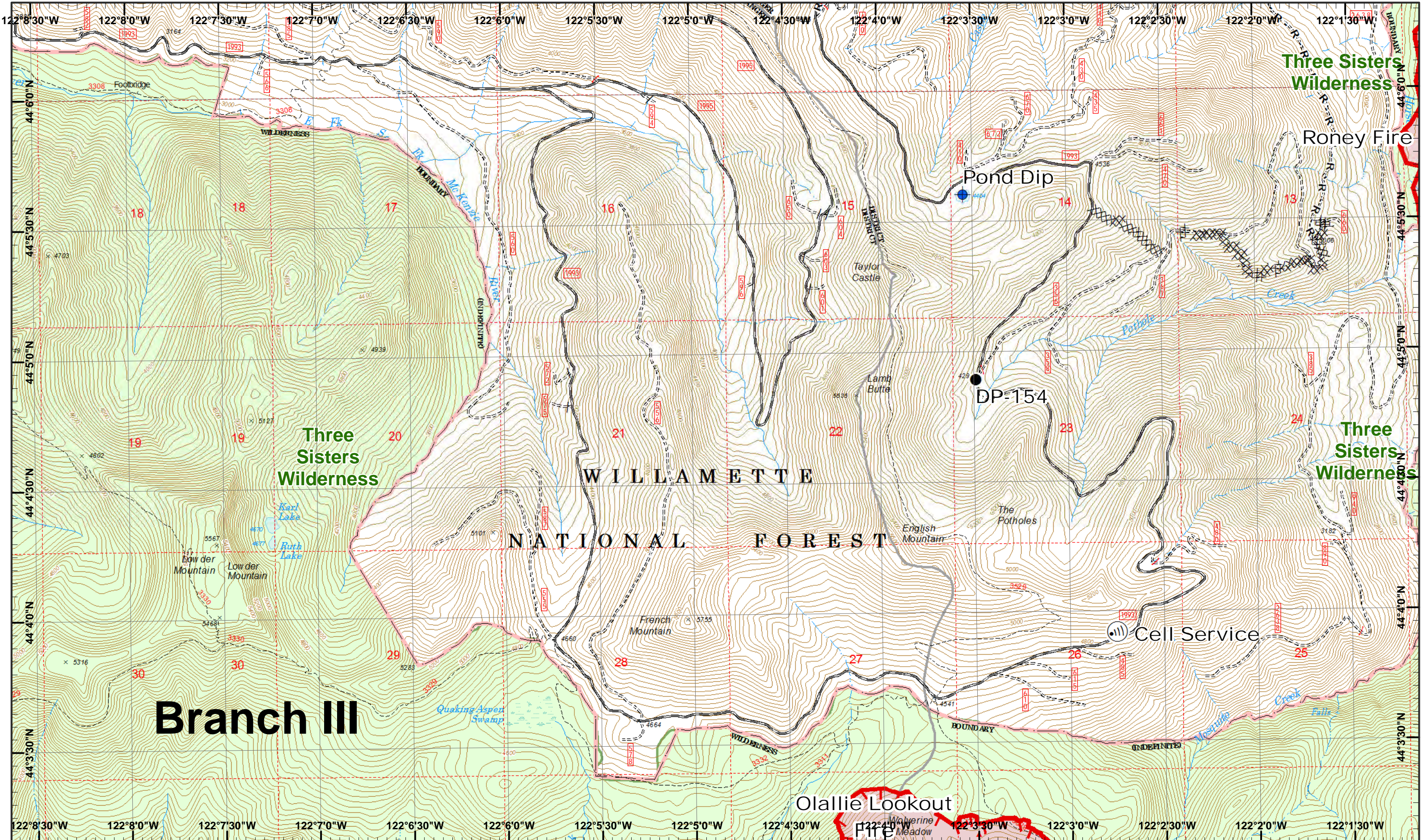
 Drop Point
 Helispot

Map Created 9/4/2017 8:00:03 PM RDC



| | | | |
|----|----|----|----|
| 1 | 2 | 3 | 4 |
| 5 | 6 | 7 | 8 |
| 9 | 10 | 11 | 12 |
| 13 | 14 | 15 | |
| 16 | 17 | | |





Rebel, Pete
Horse Creek
September 5, 2017

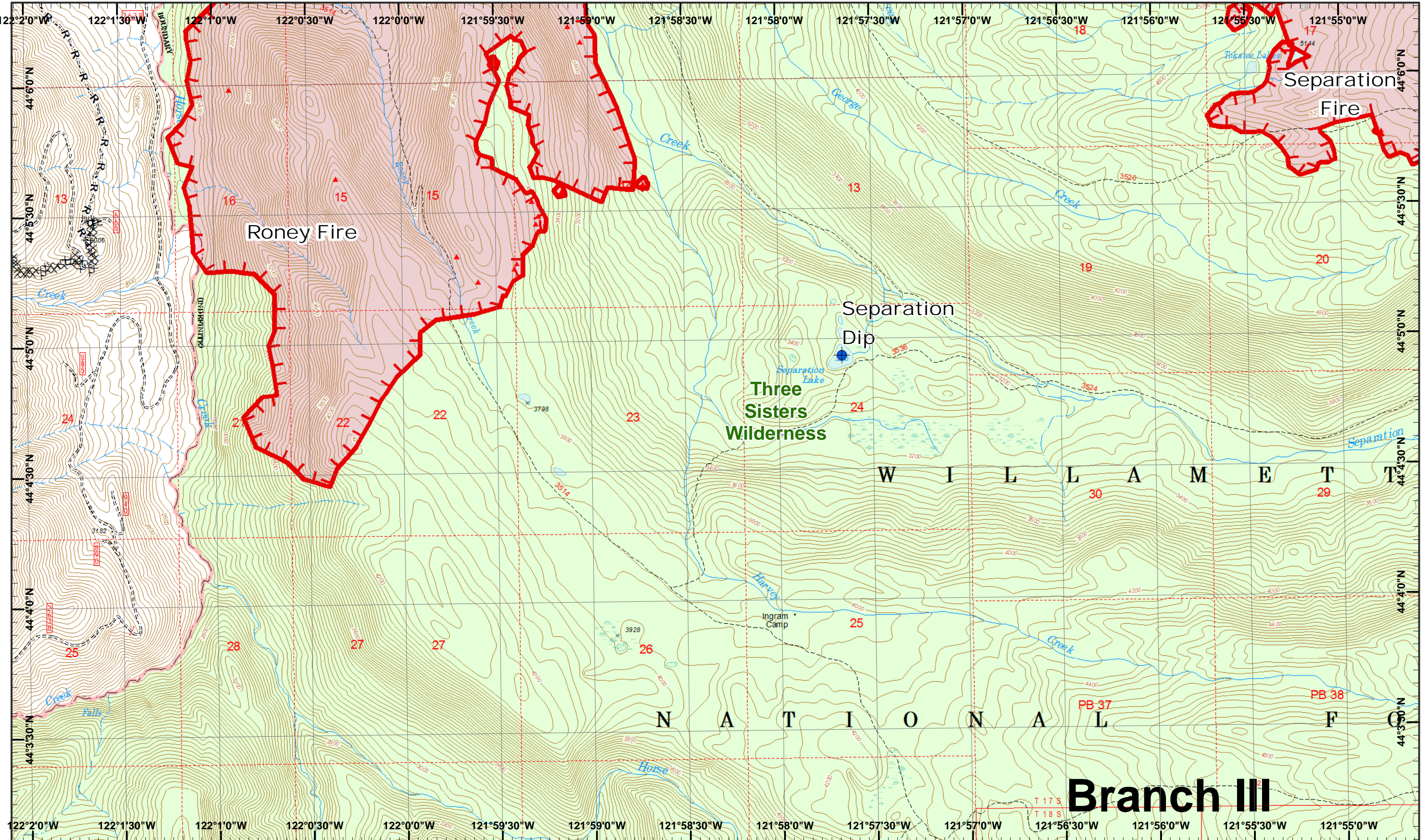
GIS Est. 9/4/2017 1600
Rebel Fire - 7,354 Acres
Pete Fire - 51 Acres
Olallie Lookout Fire - 832 Acres
Roney Fire - 2,483 Acres
Separation Fire - 8,958 Acres
Avenue Fire - 1,196 Acres
Nash Fire - 3,994 Acres

Map Created 9/4/2017 7:57:39 PM RDC

Dip Site
 IR Heat Source
 Internet Access
 Uncontrolled Fire
 Road as Line
 Drop Point
 Completed Dozer



| | | | |
|----|----|----|----|
| 1 | 2 | 3 | 4 |
| 5 | 6 | 7 | 8 |
| 9 | 10 | 11 | 12 |
| 13 | 14 | 15 | |
| 16 | 17 | | |



Rebel, Pete Horse Creek
 September 5, 2017
 GIS Est. 9/4/2017 1600
 Rebel Fire - 7,354 Acres
 Pete Fire - 51 Acres
 Ollie Lookout Fire - 832 Acres
 Roney Fire - 2,483 Acres
 Separation Fire - 8,958 Acres
 Avenue Fire - 1,196 Acres
 Nash Fire - 3,994 Acres

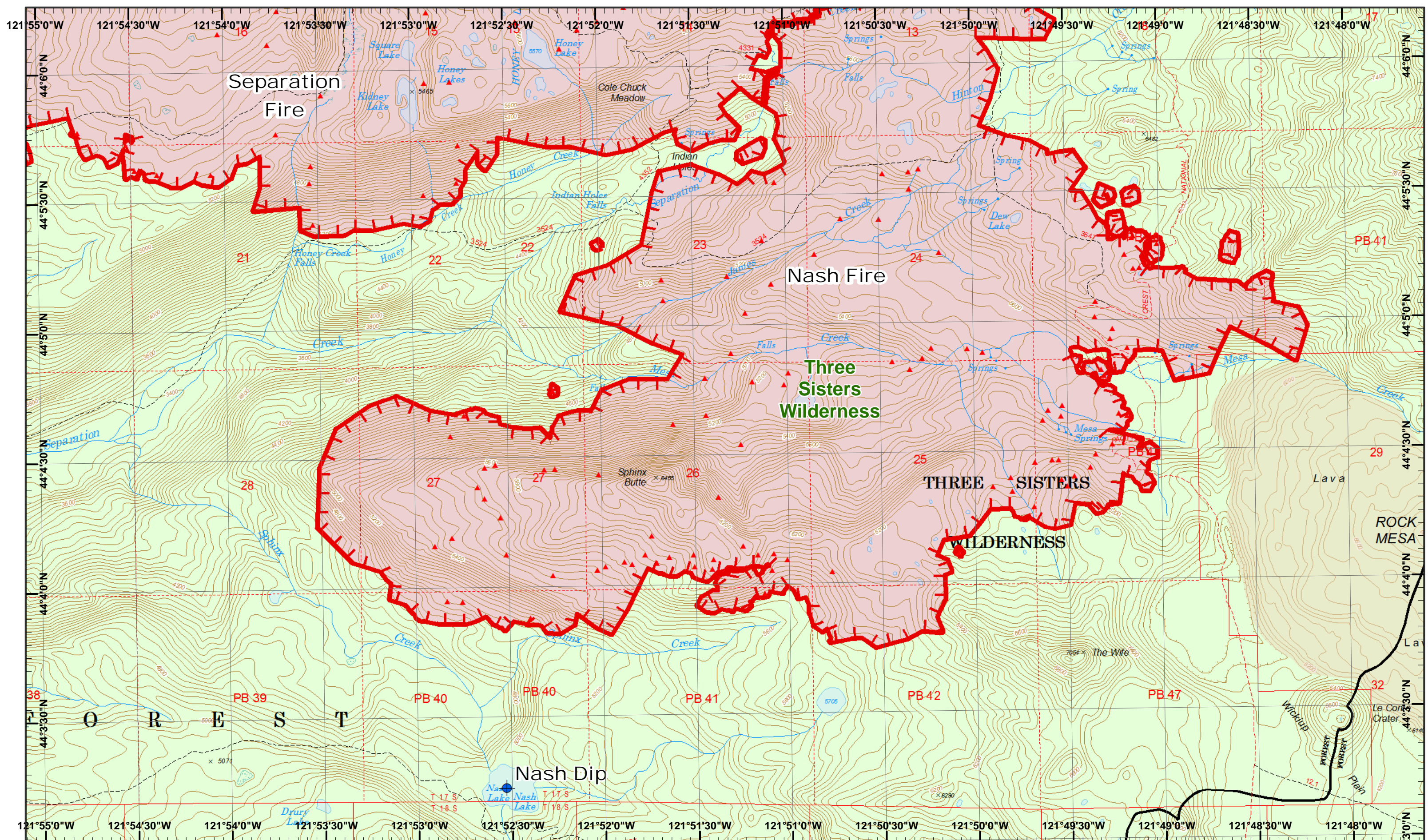
0 0.25 0.5 Miles
 Map Created 9/4/2017 7:57:49 PM RDC

Dip Site
 Uncontrolled Fire
 Road as Line
 IR Heat Source
 Completed Dozer

Branch III



| | | | |
|----|----|----|----|
| 1 | 2 | 3 | 4 |
| 5 | 6 | 7 | 8 |
| 9 | 10 | 11 | 12 |
| 13 | 14 | 15 | |
| 16 | 17 | | |



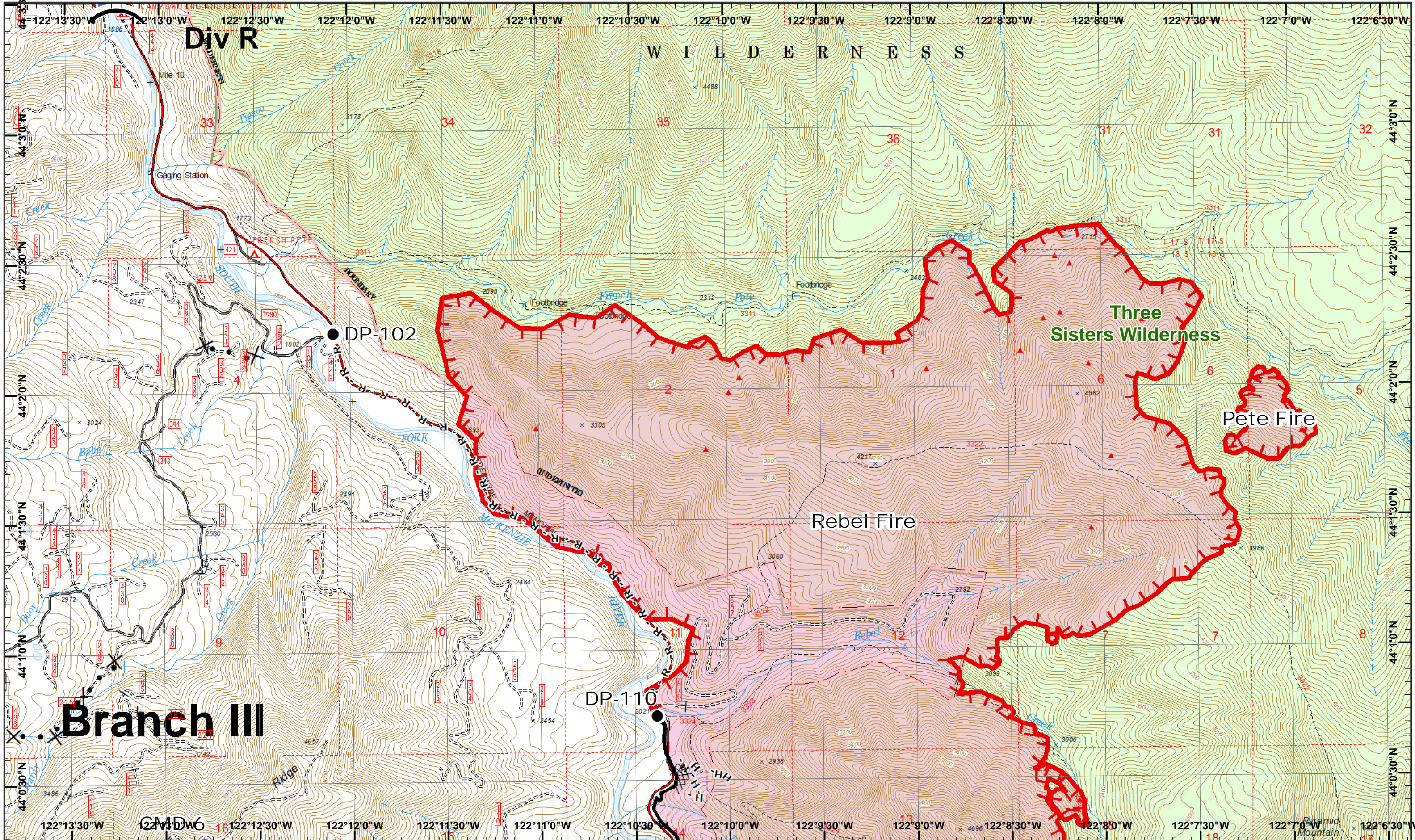
Rebel, Pete Horse Creek
 September 5, 2017
 GIS Est. 9/4/2017 1600
 Rebel Fire - 7,354 Acres
 Pete Fire - 51 Acres
 Challe Lookout Fire - 832 Acres
 Roney Fire - 2,483 Acres
 Separation Fire - 8,958 Acres
 Avenue Fire - 1,196 Acres
 Nash Fire - 3,994 Acres

0 0.25 0.5 Miles
 Map Created 9/4/2017 7:57:59 PM RDC

Dip Site
 IR Heat Source
 Uncontrolled Fire



| | | | |
|----|----|----|----|
| 1 | 2 | 3 | 4 |
| 5 | 6 | 7 | 8 |
| 9 | 10 | 11 | 12 |
| 13 | 14 | 15 | 16 |
| 16 | 17 | | |



Rebel, Pete
Horse Creek
 September 5, 2017

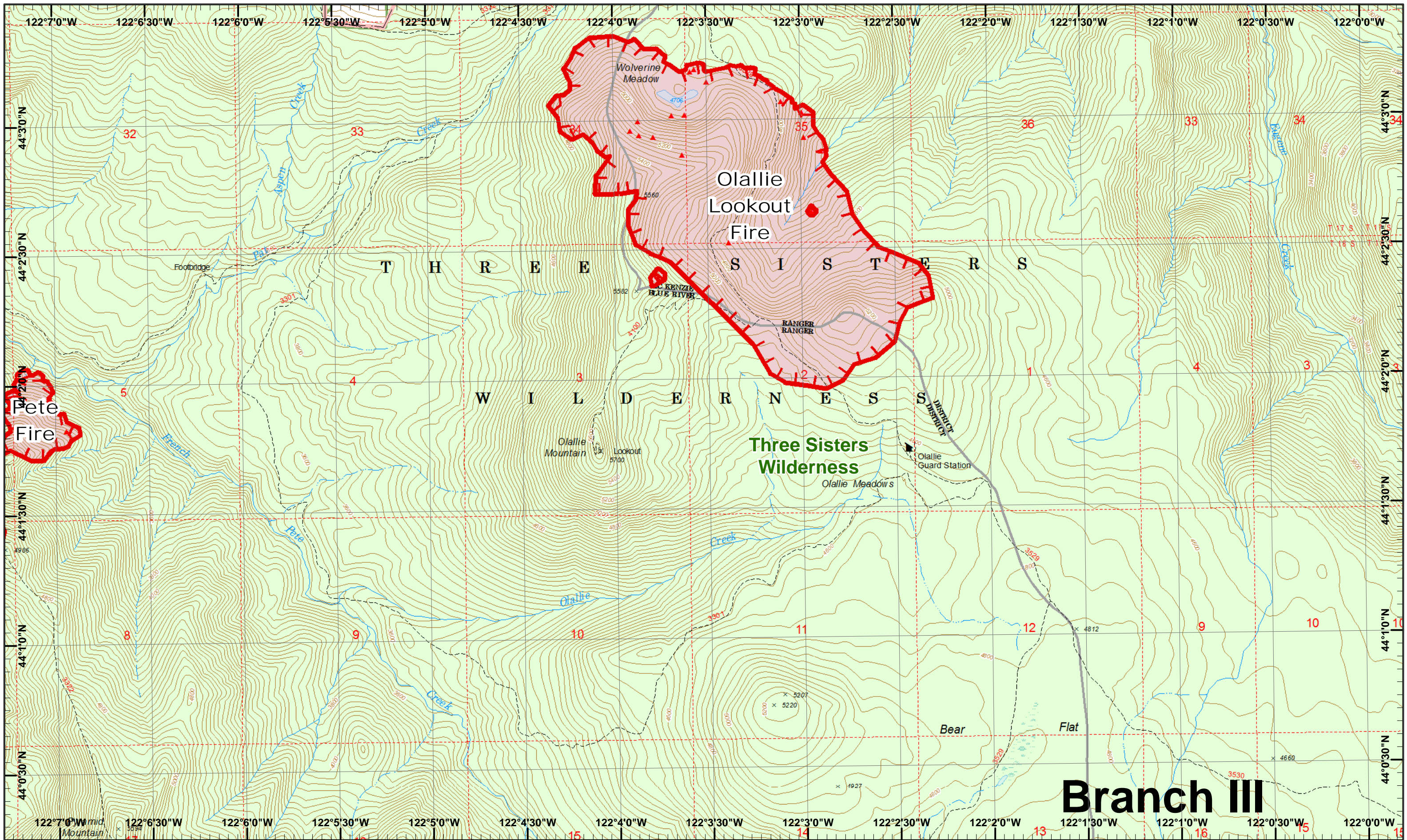
GIS Est. 9/4/2017 1600
 Rebel Fire - 7,354 Acres
 Pete Fire - 51 Acres
 Challe Lookout Fire - 832 Acres
 Roney Fire - 2,483 Acres
 Separation Fire - 8,958 Acres
 Avenue Fire - 1,196 Acres
 Nash Fire - 3,994 Acres

Map Created 9/4/2017 7:58:09 PM RDC

- North Arrow
- Drop Point
- IR Heat Source
- Water Source
- Completed
- Completed Hand
- Proposed Dozer
- Helispot
- Repeater
- Uncontrolled Fire
- Completed Dozer
- Road as Line



| | | | |
|----|----|----|----|
| 1 | 2 | 3 | 4 |
| 5 | 6 | 7 | 8 |
| 9 | 10 | 11 | 12 |
| 13 | 14 | 15 | 16 |
| 17 | 18 | 19 | 20 |



Rebel, Pete Horse Creek
 September 5, 2017

GIS Est. 9/4/2017 1600
 Rebel Fire - 7,354 Acres
 Pete Fire - 51 Acres
 Olallie Lookout Fire - 832 Acres
 Roney Fire - 2,483 Acres
 Separation Fire - 8,958 Acres
 Avenue Fire - 1,196 Acres
 Nash Fire - 3,994 Acres

0 0.25 0.5 Miles
 Map Created 9/4/2017 7:58:17 PM RDC

IR Heat Source
 Uncontrolled Fire

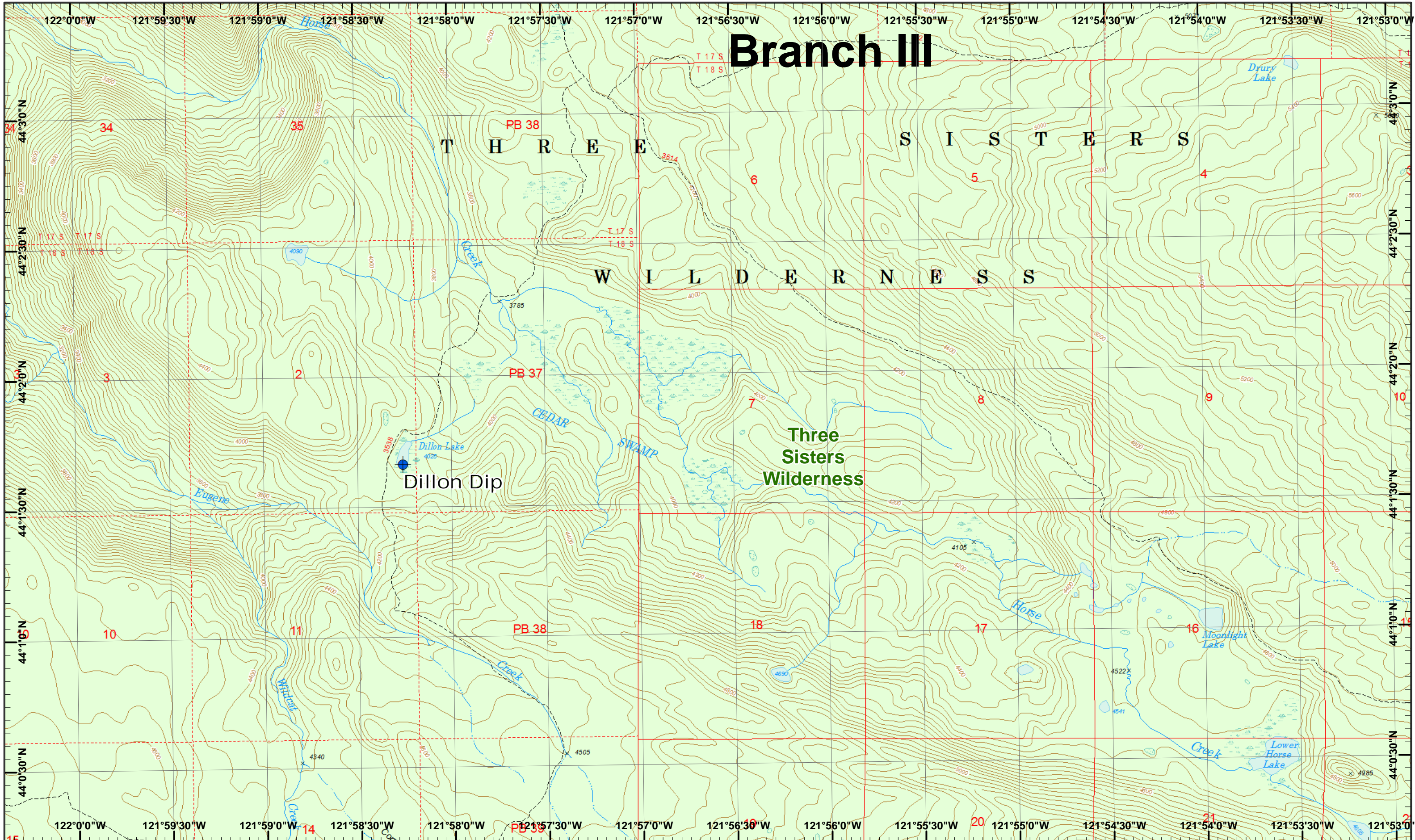
Branch III



| | | | |
|----|----|----|----|
| 1 | 2 | 3 | 4 |
| 5 | 6 | 7 | 8 |
| 9 | 10 | 11 | 12 |
| 13 | 14 | 15 | |
| 16 | 17 | | |

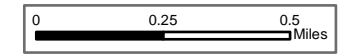
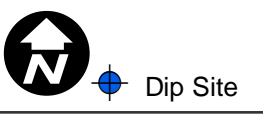
Page 14
)(Division
][Branch

Branch III



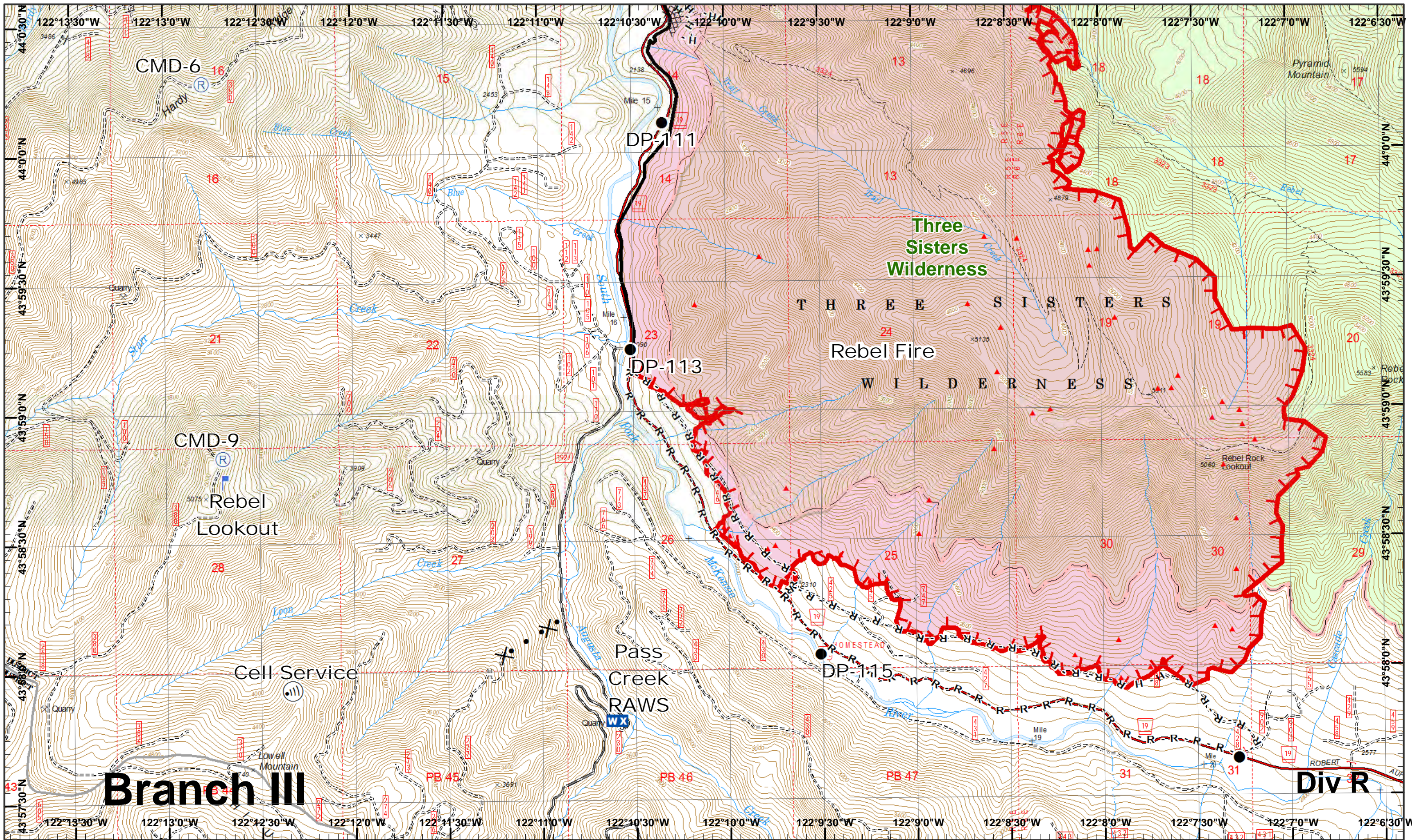
Rebel, Pete
Horse Creek
September 5, 2017

GIS Est. 9/4/2017 1600
Rebel Fire - 7,354 Acres
Pete Fire - 51 Acres
Ollie Lookout Fire - 832 Acres
Roney Fire - 2,483 Acres
Separation Fire - 8,958 Acres
Avenue Fire - 1,196 Acres
Nash Fire - 3,994 Acres



| | | | |
|----|----|----|----|
| 1 | 2 | 3 | 4 |
| 5 | 6 | 7 | 8 |
| 9 | 10 | 11 | 12 |
| 13 | 14 | 15 | 16 |
| 17 | | | |





Rebel, Pete Horse Creek
 September 5, 2017
 GIS Est. 9/4/2017 1600
 Rebel Fire - 7,354 Acres
 Pete Fire - 51 Acres
 Quail Lookout Fire - 832 Acres
 Roney Fire - 2,483 Acres
 Separation Fire - 8,958 Acres
 Avenue Fire - 1,196 Acres
 Nash Fire - 3,994 Acres

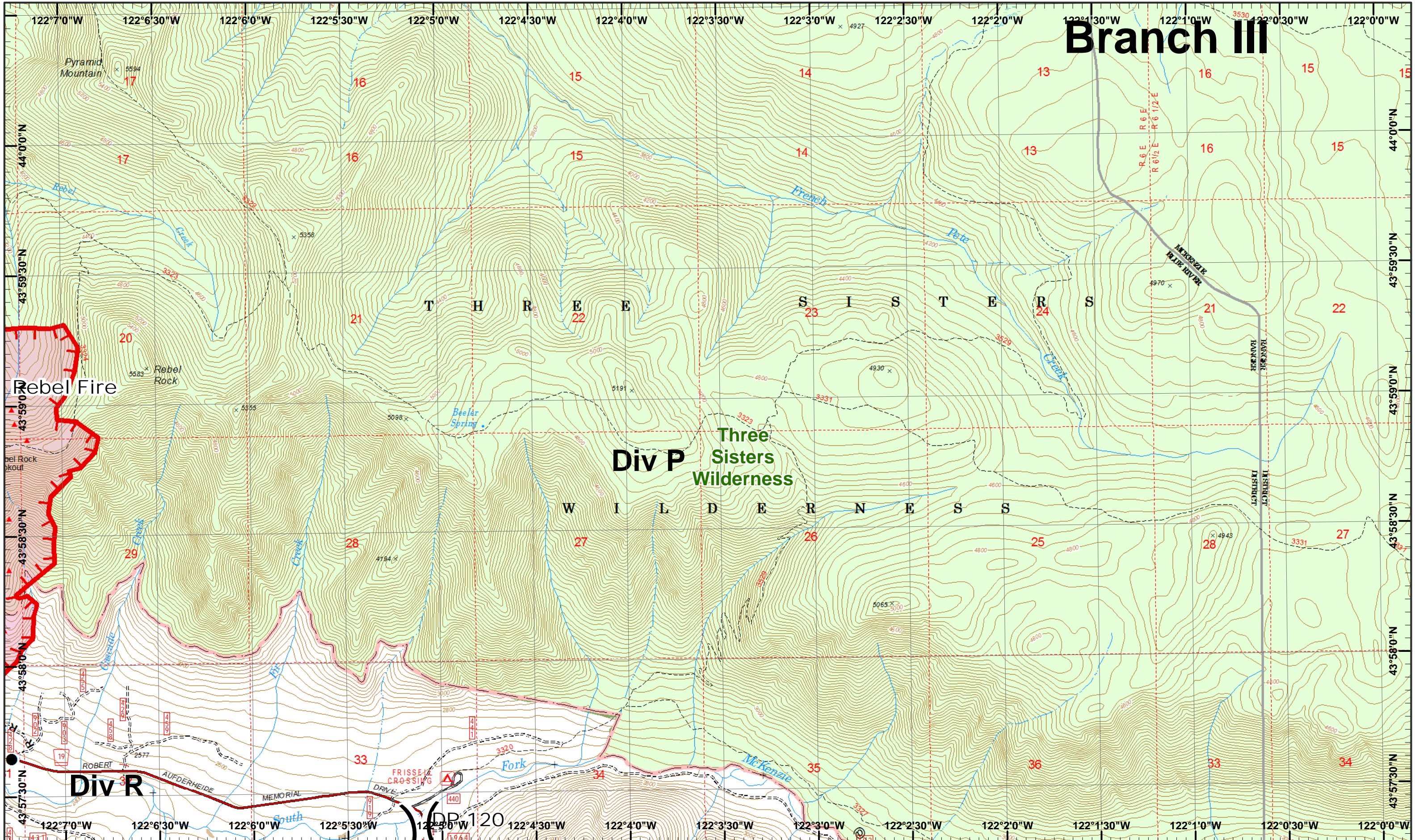
0 0.25 0.5 Miles
 Map Created 9/4/2017 7:58:36 PM RDC

- North
- Drop Point
- IR Heat Source
- Internet Access
- Mobile Weather
- Uncontrolled Fire
- Lookout
- Repeater
- Completed
- Completed Dozer
- Completed Hand
- Proposed Dozer
- Road as Line

| | | | |
|----|----|----|----|
| 1 | 2 | 3 | 4 |
| 5 | 6 | 7 | 8 |
| 9 | 10 | 11 | 12 |
| 13 | 14 | 15 | |
| 16 | 17 | | |

Page 16
)(Division
)(Branch

Branch III



**Rebel, Pete
Horse Creek**
September 5, 2017

GIS Est. 9/4/2017 1600
Rebel Fire - 7,354 Acres
Pete Fire - 51 Acres
Chaille Lookout Fire - 832 Acres
Roney Fire - 2,483 Acres
Separation Fire - 8,958 Acres
Avenue Fire - 1,196 Acres
Nash Fire - 3,994 Acres

0 0.25 0.5 Miles

Drop Point

IR Heat Source

Uncontrolled Fire

Road as Line

