

# Whitewater, French, Little Devil Fires IAP

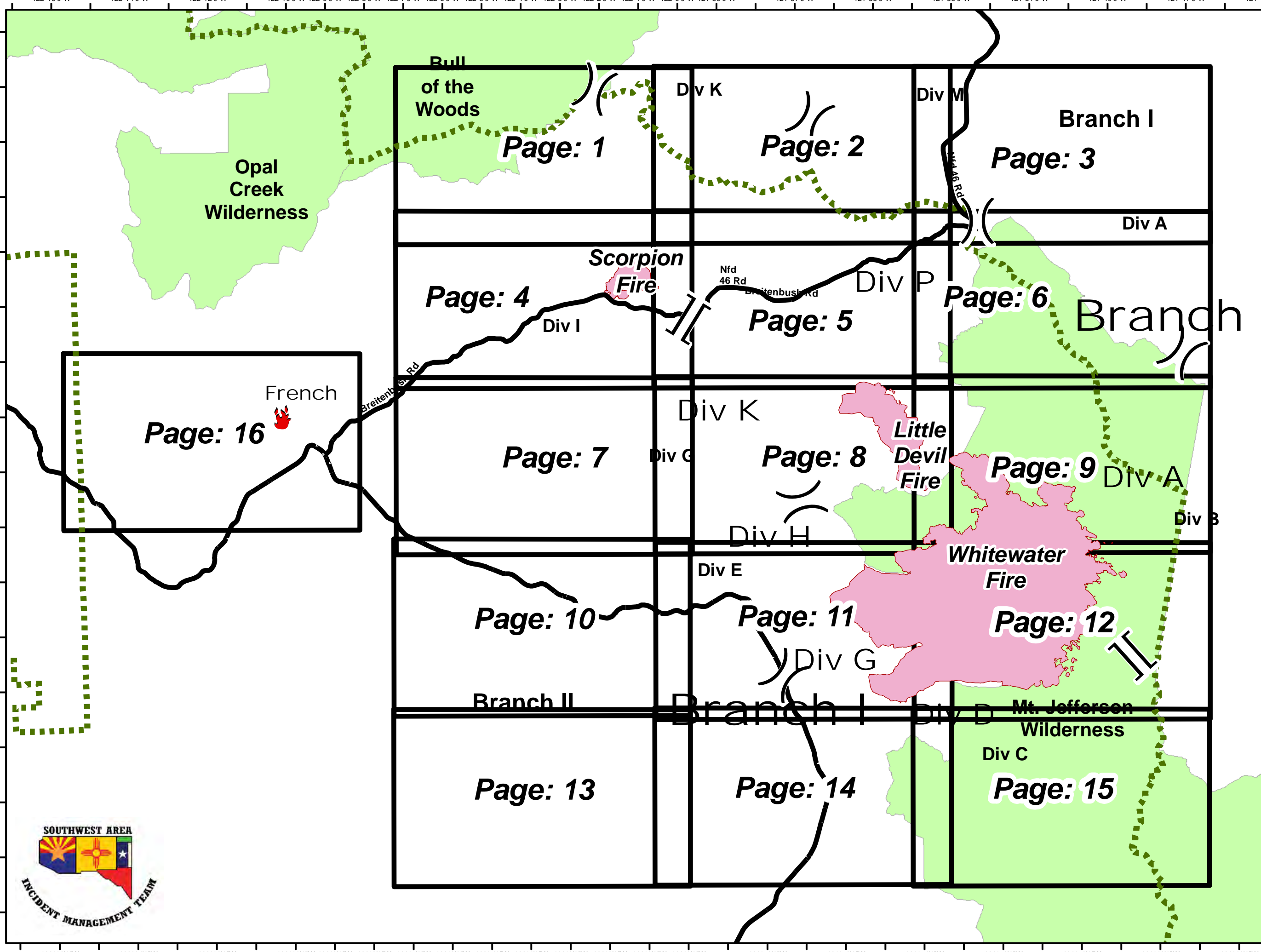
September 5, 2017

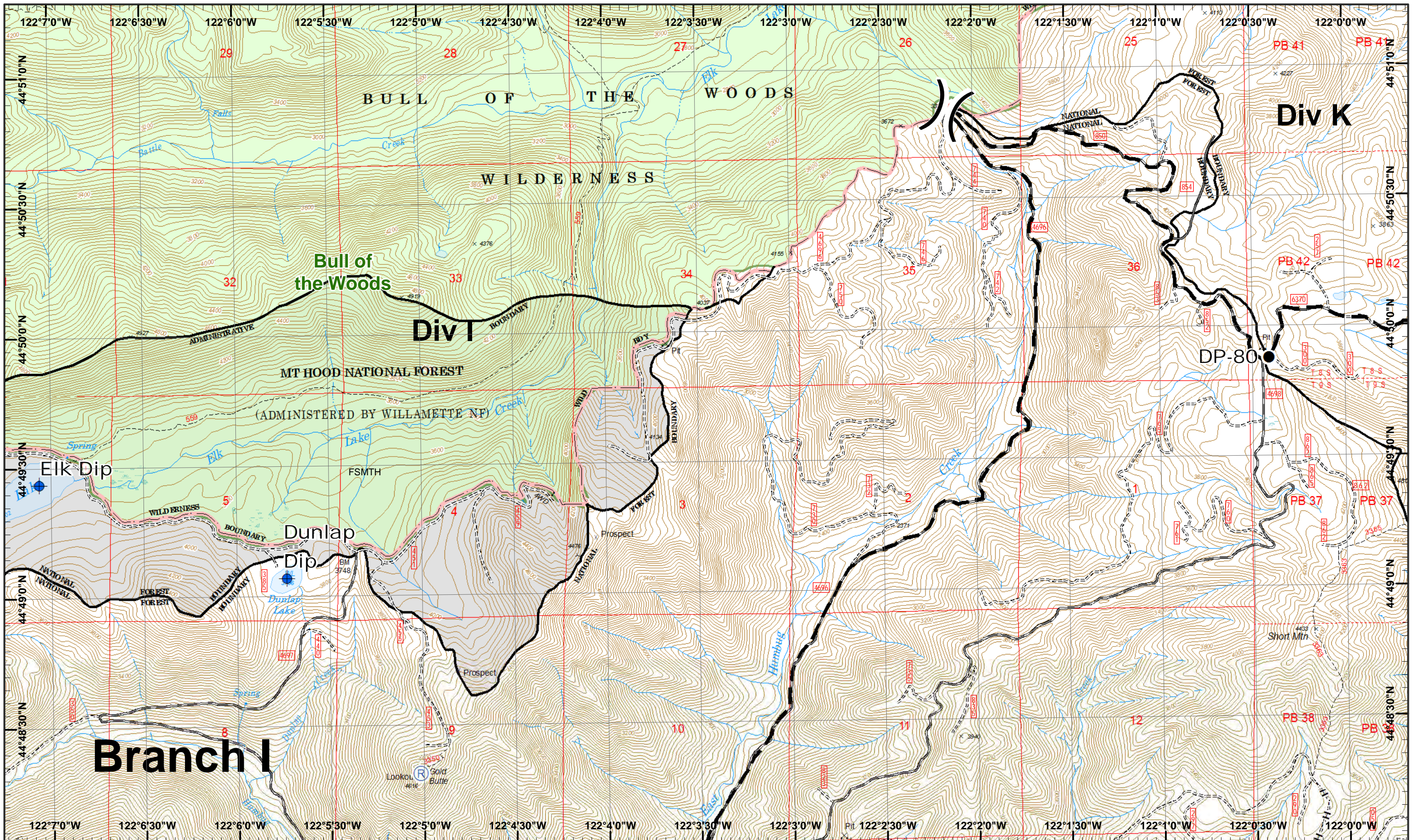
- Ⓒ Camp
- ✕ Closure
- ⦿ Dip Site
- Drop Point
- ⚓ Gate
- ⦿ Helispot
- ▲ IR Isolated Heat Source
- 📶 Internet Access
- 🏠 Lookout
- 📶 Mobile Weather Unit
- Ⓟ Pump
- Ⓡ Repeater
- ⚠ Safety Zone
- 🌊 Water Source
- 🎯 Value at Risk

- 🔴 Uncontrolled Fire Edge
- Completed Line
- ⊗ Completed Dozer Line
- H - H - H Completed Hand Line
- R - R - R Road as Completed Line
- ⊗ Proposed Dozer Line
- Planned Fire Line
- ⊕ Other

1:116,995

0 1 2 Miles





**Whitewater Incident**  
 September 5, 2017

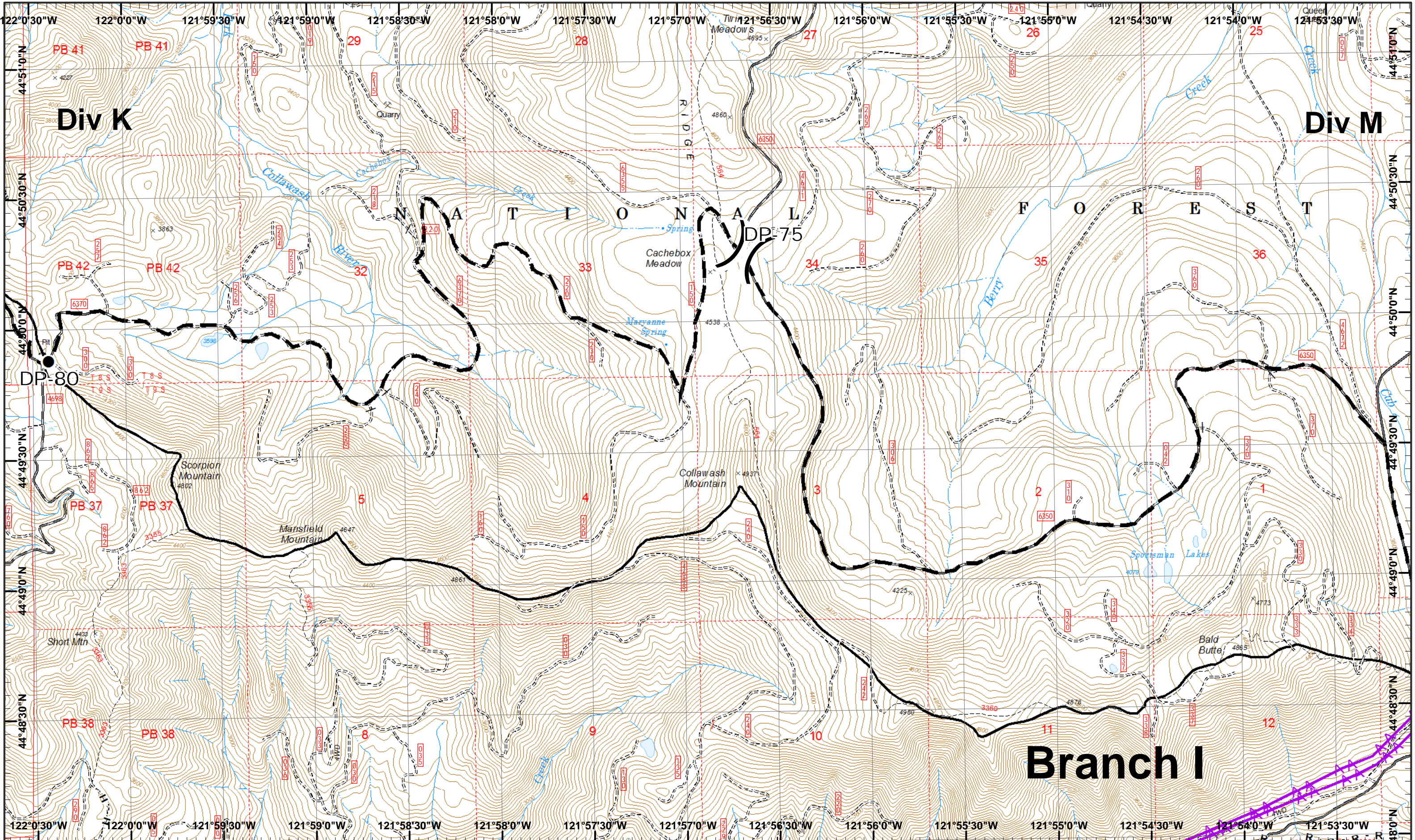
GIS Est. 9/4/2017 1600  
 Whitewater Fire - 10,624 Acres  
 Little Devil Fire - 1,068 Acres  
 French Fire - 2 Acres  
 Scorpion Fire - 360 Acres

Map Created 9/4/2017 8:13:39 PM RDC

Dip Site
 Repeater
 Planned Fire Line

Drop Point
 Completed Hand

Page 1  
 ( ) Division  
 [ ] Branch



**Whitewater Incident**  
 September 5, 2017

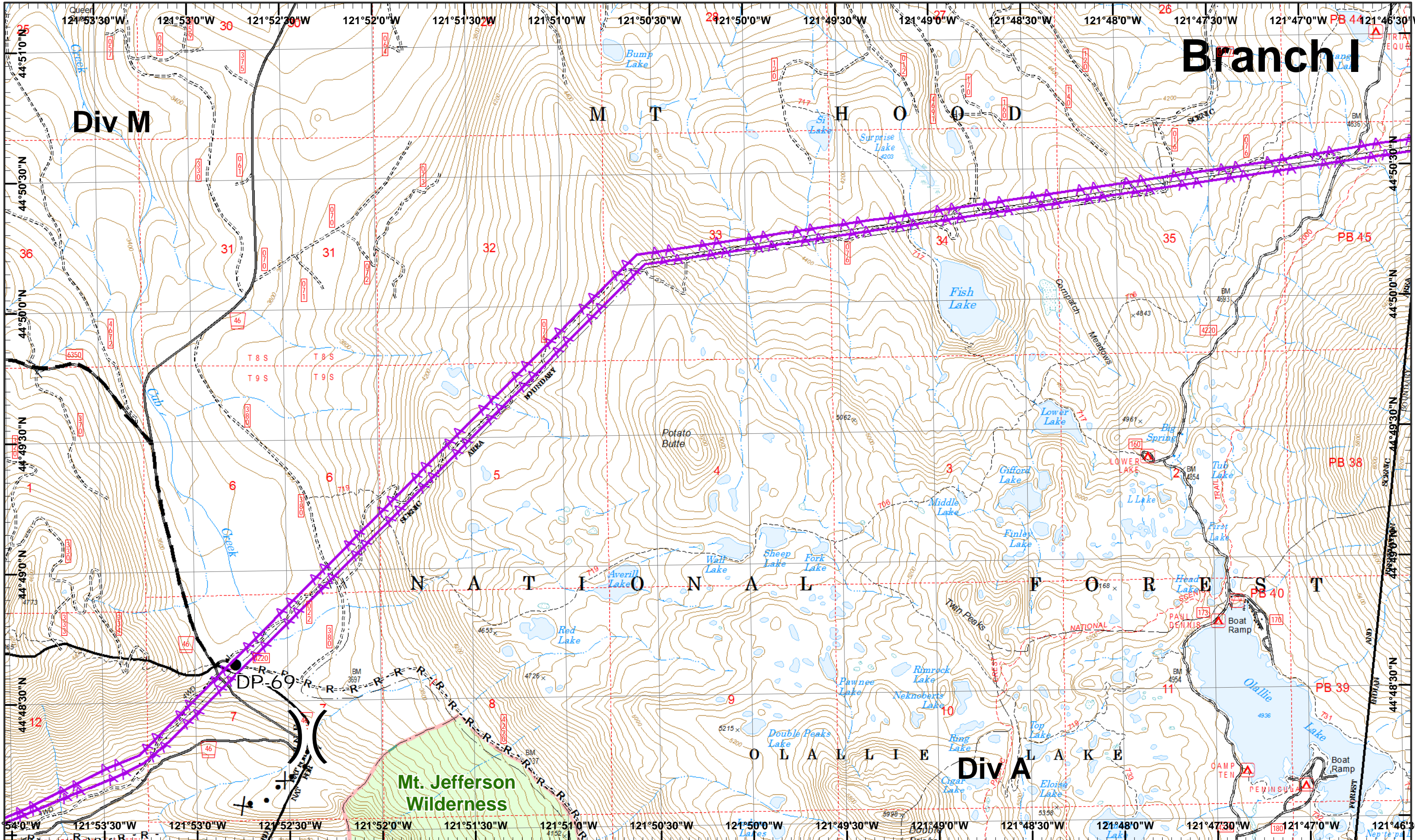
GIS Est. 9/4/2017 1600  
 Whitewater Fire - 10,624 Acres  
 Little Devil Fire - 1,068 Acres  
 French Fire - 2 Acres  
 Scorpion Fire - 360 Acres

Map Created 9/4/2017 8:15:14 PM RDC

H - Completed Hand  
 Drop Point  
 R - Road as Line  
 Planned Fire Line  
 Powerline

1	2	3
4	5	6
7	8	9
10	11	12
13	14	15

Page 2  
 )( Division  
 ][ Branch



# Branch I

Div M

Div A

**Whitewater Incident**  
 September 5, 2017

GIS Est. 9/4/2017 1600  
 Whitewater Fire - 10,624 Acres  
 Little Devil Fire - 1,068 Acres  
 French Fire - 2 Acres  
 Scorpion Fire - 360 Acres

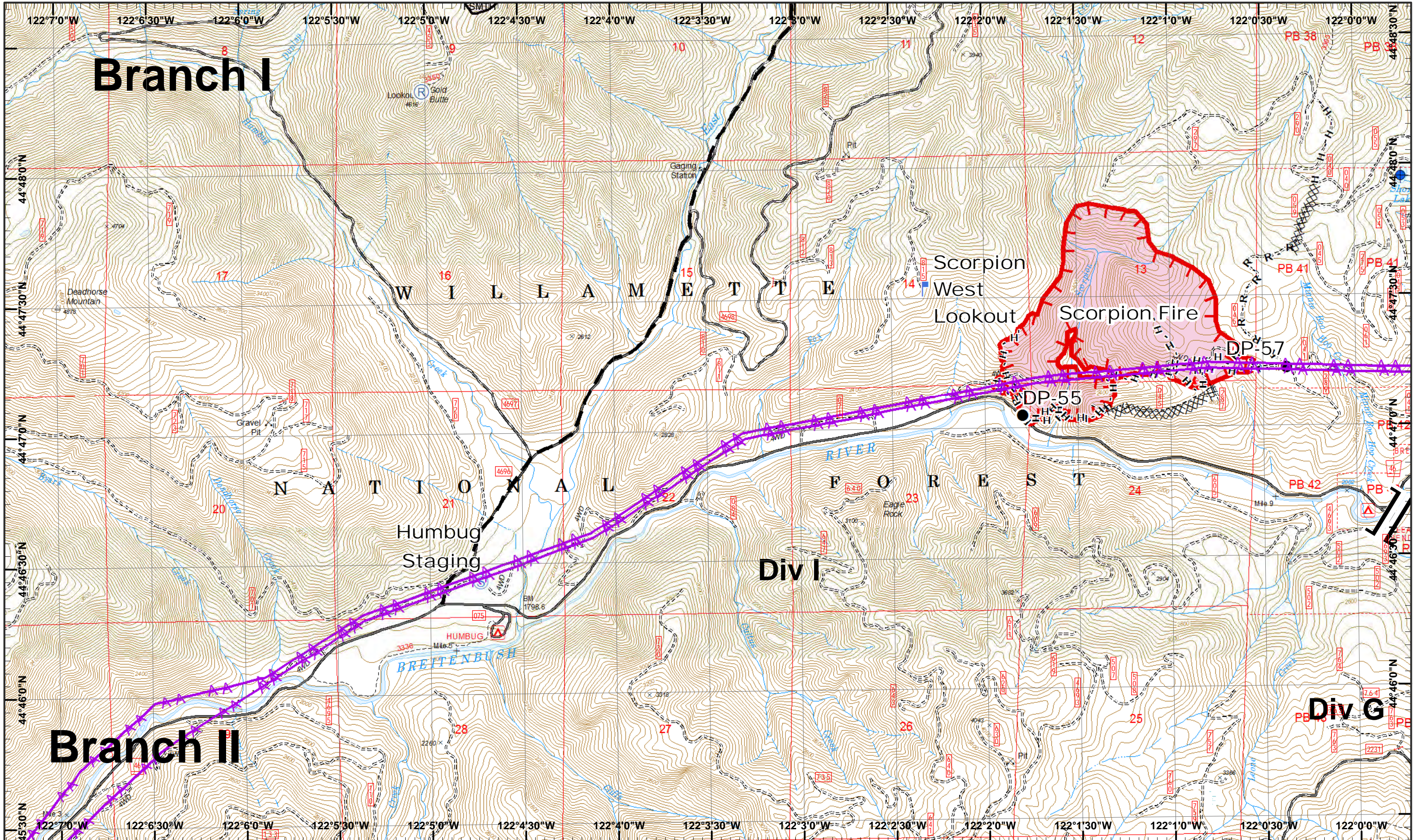
Map Created 9/4/2017 8:15:25 PM RDC

- Drop Point
- R - Road as Line
- Proposed Dozer
- Powerline
- H - Completed Hand
- Planned Fire Line



1	2	3
4	5	6
7	8	9
10	11	12
13	14	15





# Branch I

# Branch II

**Whitewater Incident**  
 September 5, 2017

GIS Est. 9/4/2017 1600  
 Whitewater Fire - 10,624 Acres  
 Little Devil Fire - 1,068 Acres  
 French Fire - 2 Acres  
 Scorpion Fire - 360 Acres

Map Created 9/4/2017 8:15:35 PM RDC

- Dip Site
- IR Heat Source
- Repeater
- Staging Area
- Completed Dozer R - Road as Line
- Powerline
- Drop Point
- Lookout
- Uncontrolled Fire
- Completed Hand
- Planned Fire Line

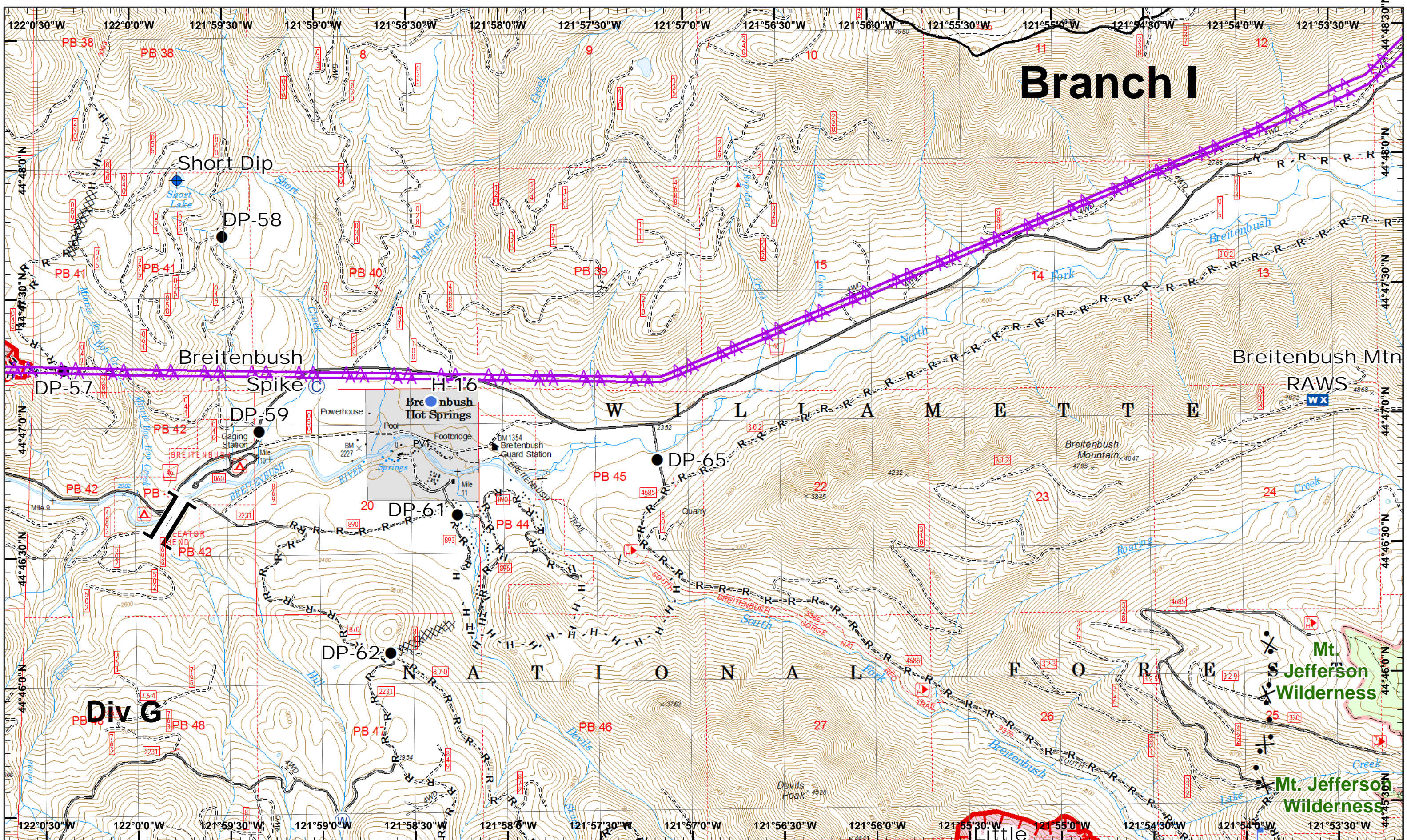


1	2	3
4	5	6
7	8	9
10	11	12
13	14	15

Page 4  
 )( Division  
 ][ Branch



# Branch I

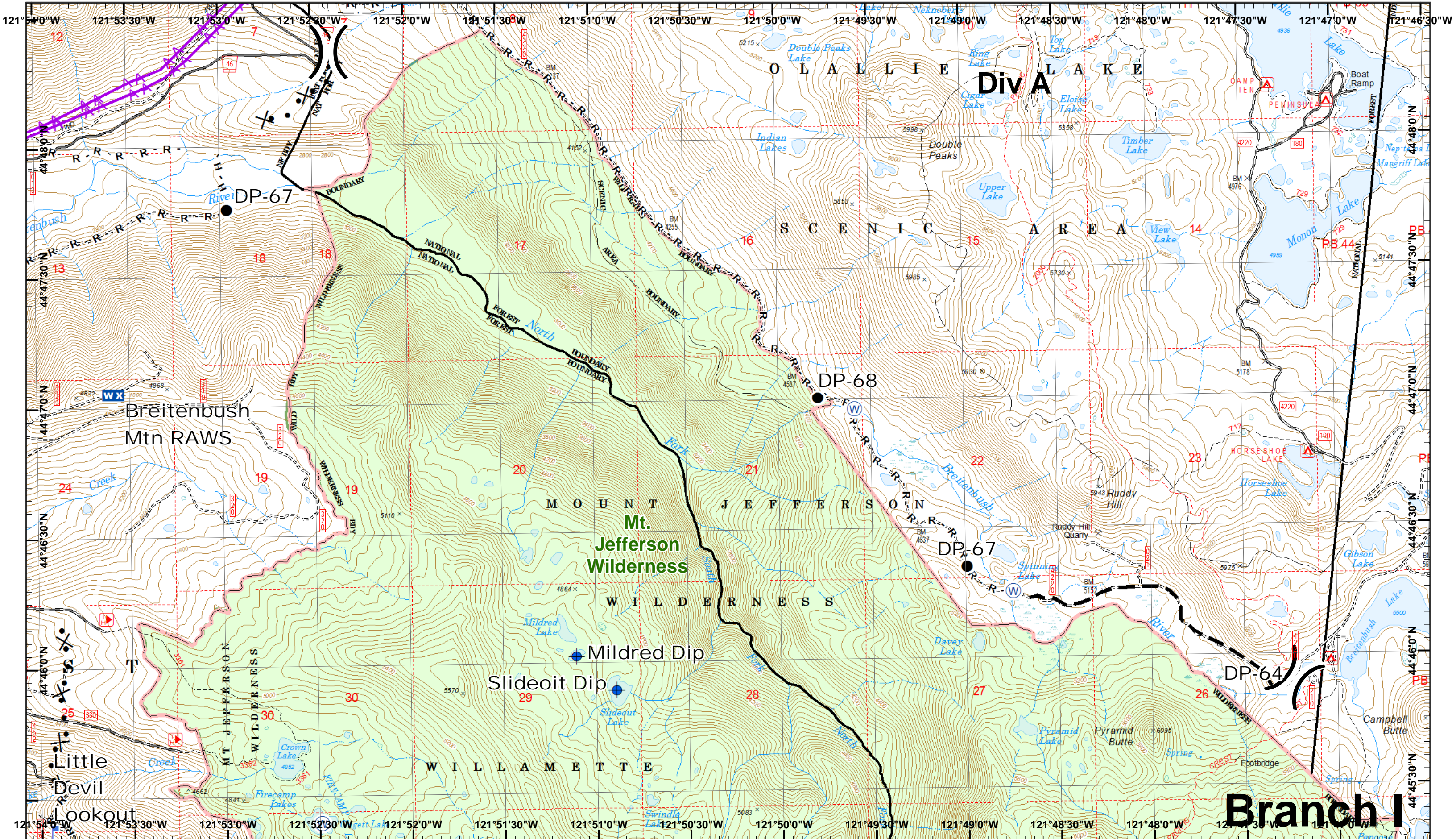


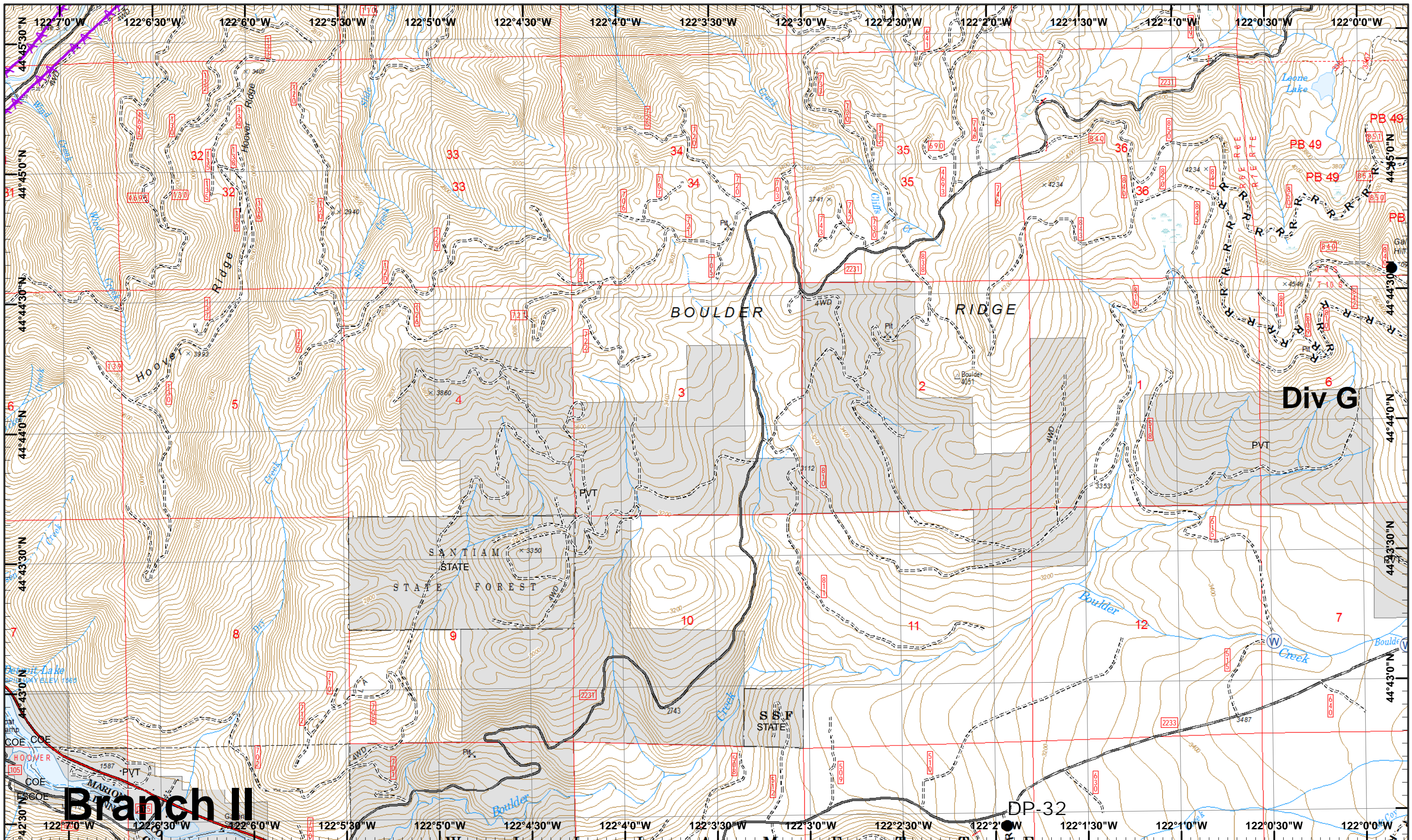
**Whitewater Incident** GIS Est. 9/4/2017 1600  
 September 5, 2017  
 Whitewater Fire - 10,624 Acres  
 Little Devil Fire - 1,068 Acres  
 French Fire - 2 Acres  
 Scorpion Fire - 360 Acres  
 Map Created 9/4/2017 8:15:46 PM RDC

0 0.25 0.5 Miles

Camp
 Dip Site
 Helispot
 Lookout
 Water Source
 Completed Dozer
 Road as Line
 Proposed Dozer
 Uncontrolled Fire
 Completed Hand
 Powerline

Page 5  
 ) Division  
 | Branch





**Whitewater Incident**  
 September 5, 2017

GIS Est. 9/4/2017 1600  
 Whitewater Fire - 10,624 Acres  
 Little Devil Fire - 1,068 Acres  
 French Fire - 2 Acres  
 Scorpion Fire - 360 Acres

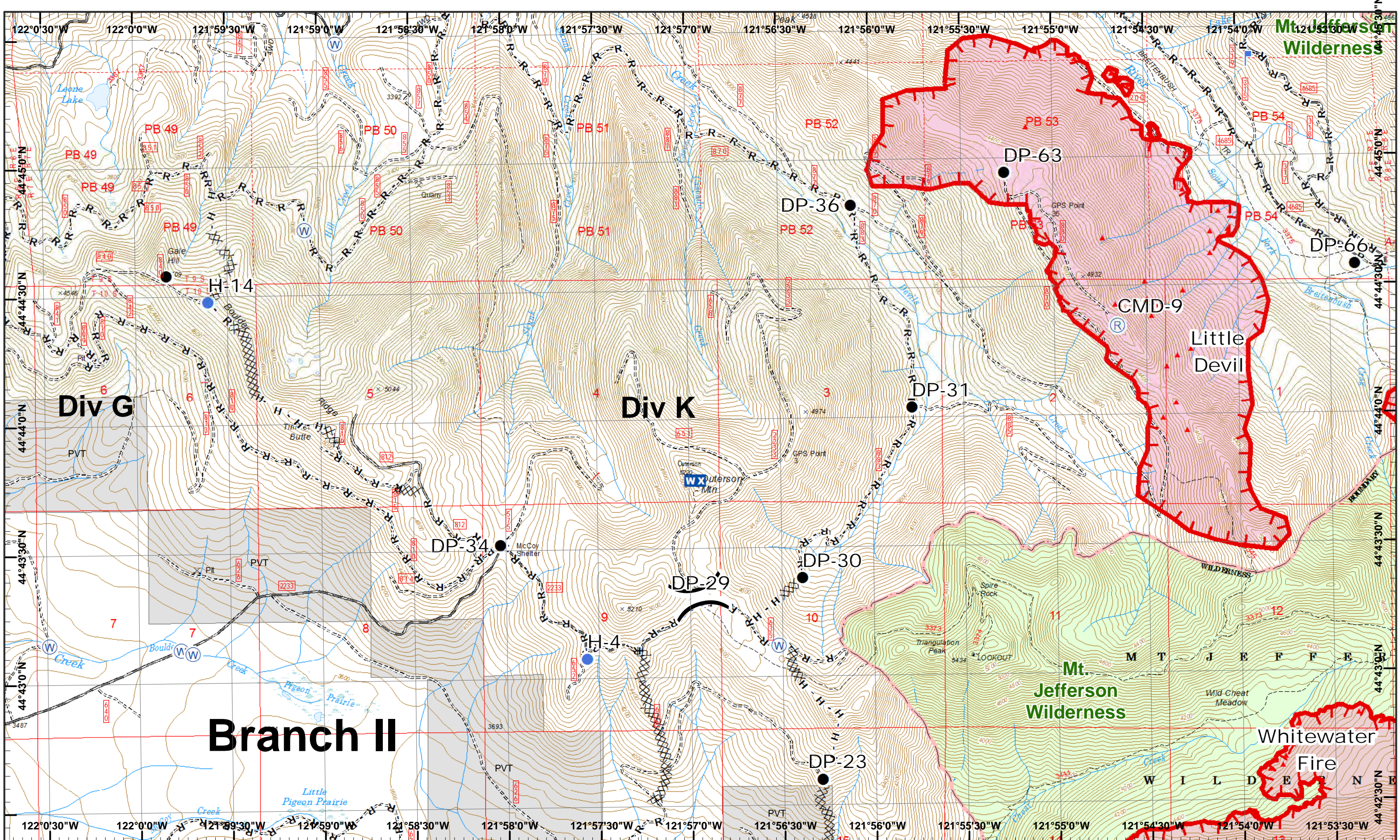
Map Created 9/4/2017 8:16:08 PM RDC

Drop Point Water Source R - Road as Line  
 Powerline

1	2	3
4	5	6
7	8	9
10	11	12
13	14	15

Page 7  
 )( Division  
 )( Branch





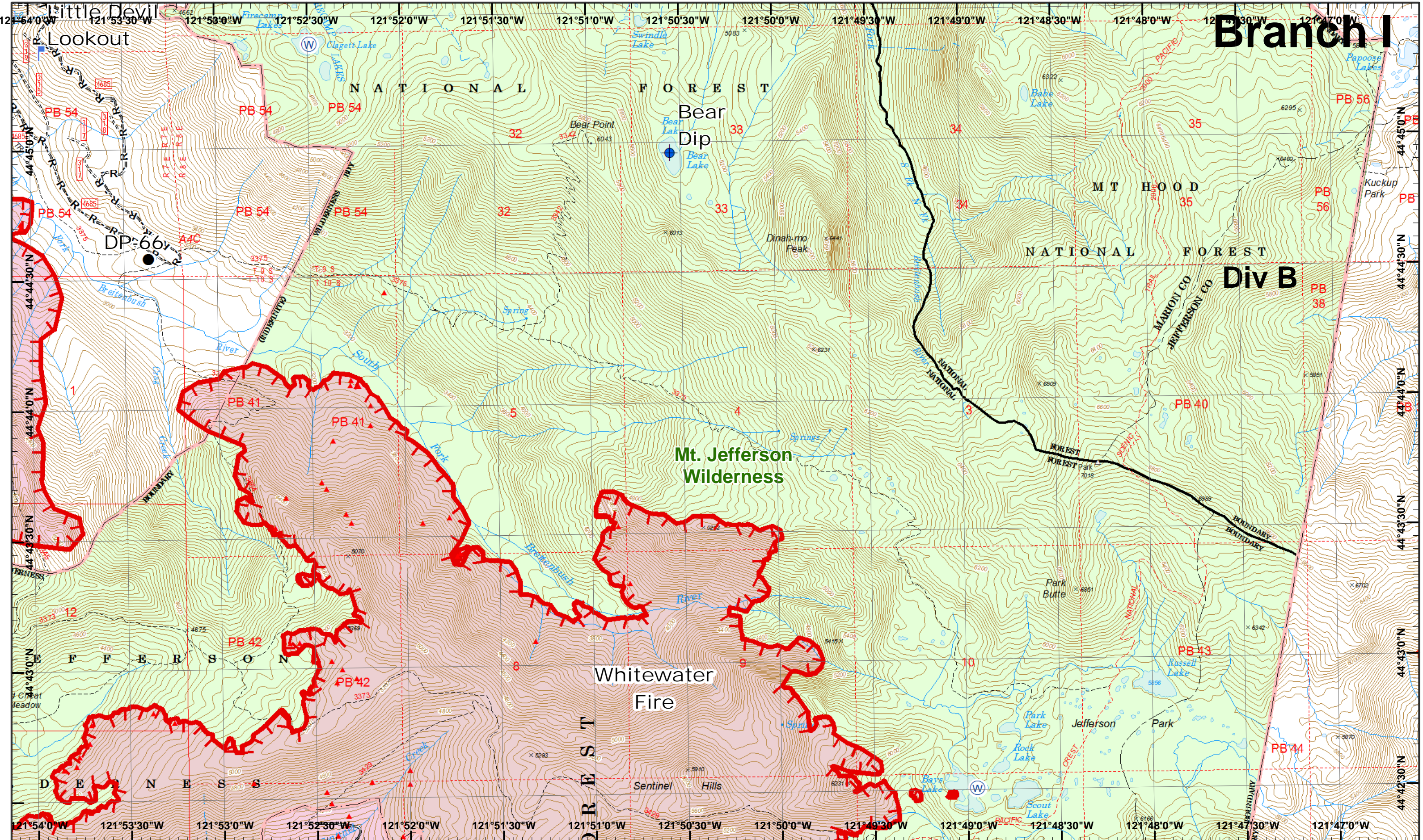
**Whitewater Incident**  
 September 5, 2017

GIS Est. 9/4/2017 1600  
 Whitewater Fire - 10,624 Acres  
 Little Devil Fire - 1,068 Acres  
 French Fire - 2 Acres  
 Scorpion Fire - 360 Acres

Map Created 9/4/2017 8:16:19 PM RDC

- Drop Point
- IR Heat Source
- Mobile Weather
- Water Source
- Completed Dozer R - Road as Line
- Helispot
- Lookout
- Repeater
- Uncontrolled Fire
- Completed Hand

# Branch I



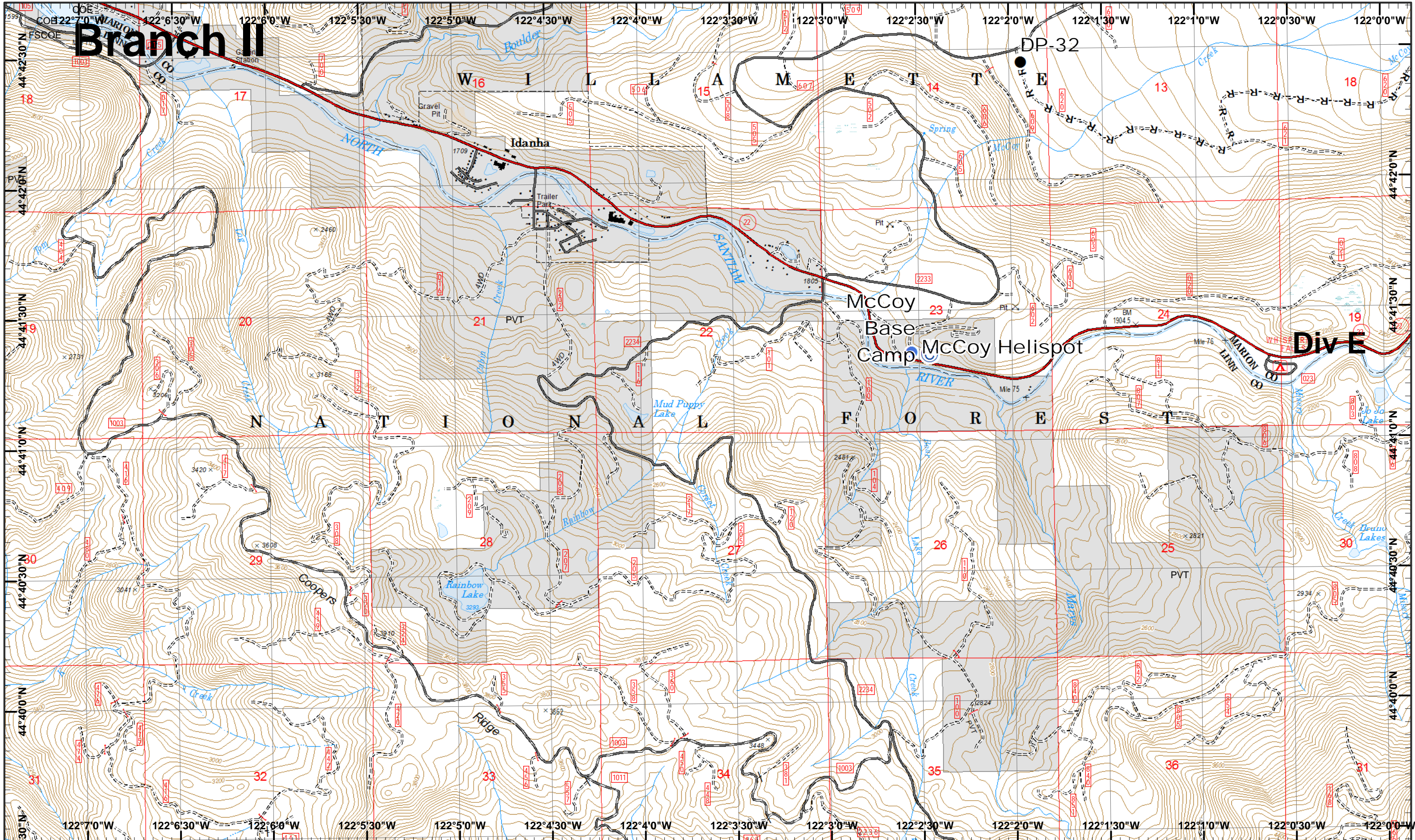
**Whitewater Incident**  
September 5, 2017  
GIS Est. 9/4/2017 1600  
Whitewater Fire - 10,624 Acres  
Little Devil Fire - 1,068 Acres  
French Fire - 2 Acres  
Scorpion Fire - 360 Acres  
Map Created 9/4/2017 8:16:29 PM RDC

- North Arrow
- Dip Site
- IR Heat Source
- Water Source
- Road as Line
- Proposed Dozer
- Lookout
- Drop Point
- Uncontrolled Fire



1	2	3
4	5	6
7	8	9
10	11	12
13	14	15





**Branch II**

**Div E**

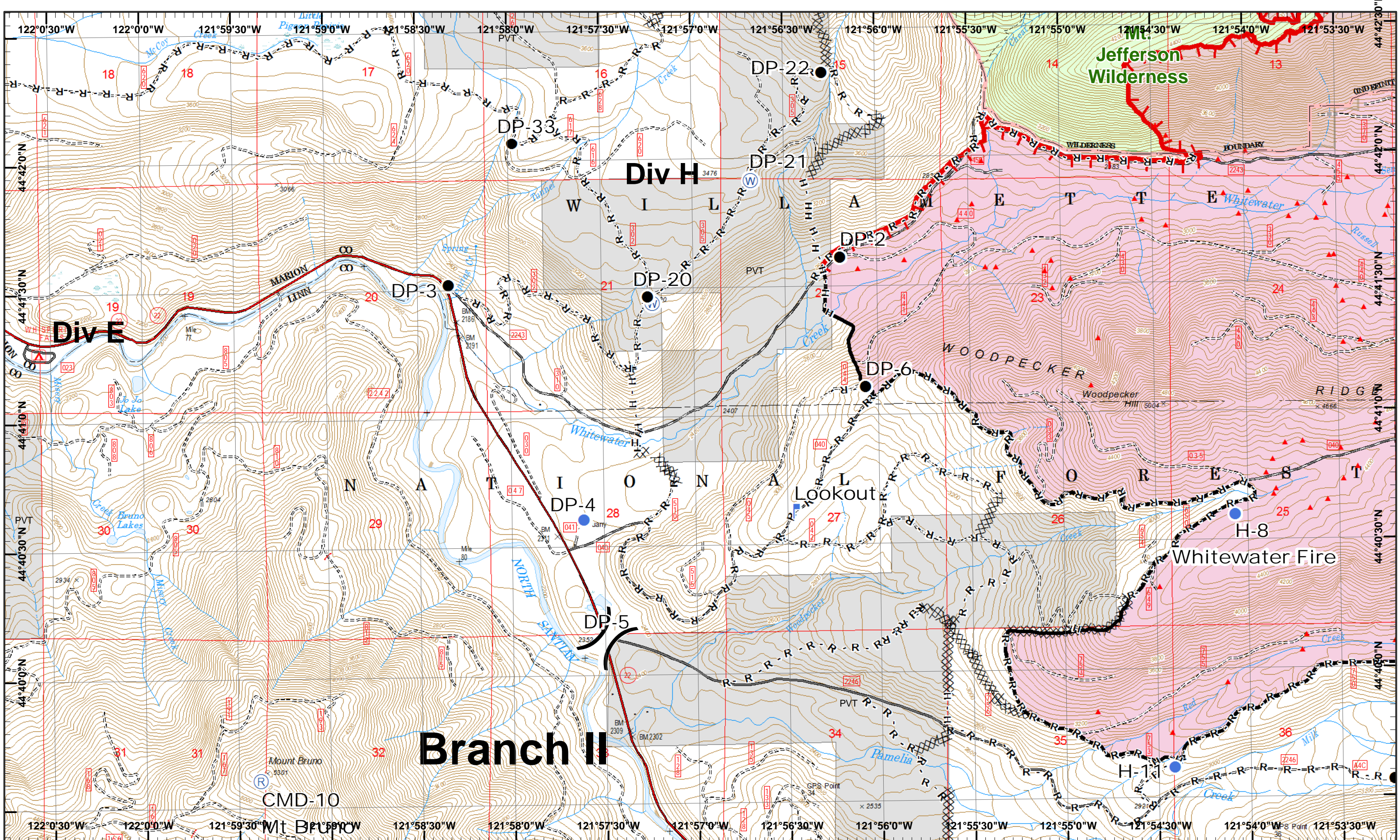


- Camp
- Drop Point
- R - Road as Line
- Helispot



1	2	3
4	5	6
7	8	9
10	11	12
13	14	15





**Whitewater Incident**  
 September 5, 2017

GIS Est. 9/4/2017 1600  
 Whitewater Fire - 10,624 Acres  
 Little Devil Fire - 1,068 Acres  
 French Fire - 2 Acres  
 Scorpion Fire - 360 Acres

Map Created 9/4/2017 8:14:10 PM RDC

0 0.25 0.5 Miles

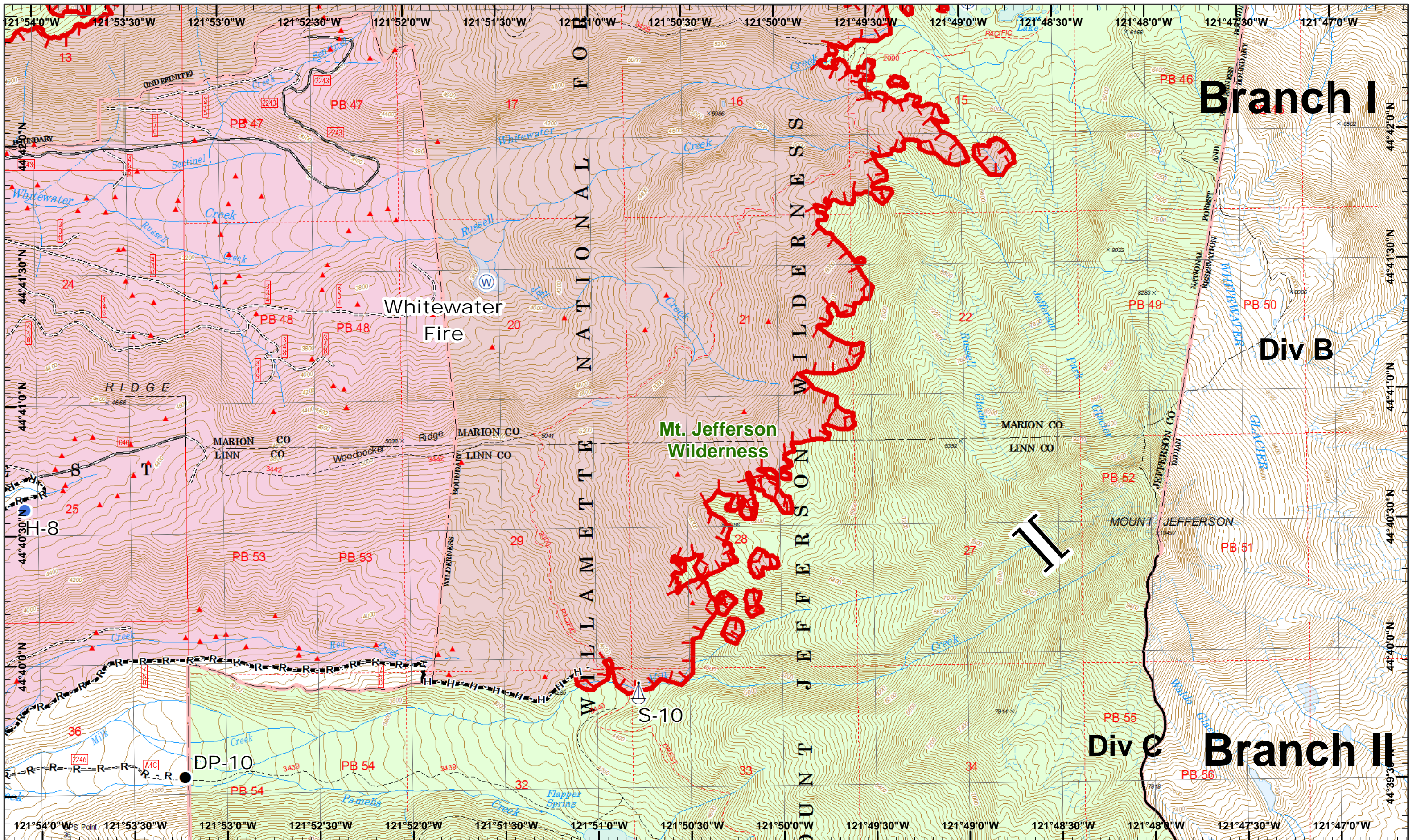
Drop Point
 IR Heat Source
 Repeater
 Water Source
 Completed
 H - Completed Hand

Helispot
 Lookout
 Completed Dozer
 R - Road as Line

Uncontrolled Fire

1	2	3
4	5	6
7	8	9
10	11	12
13	14	15

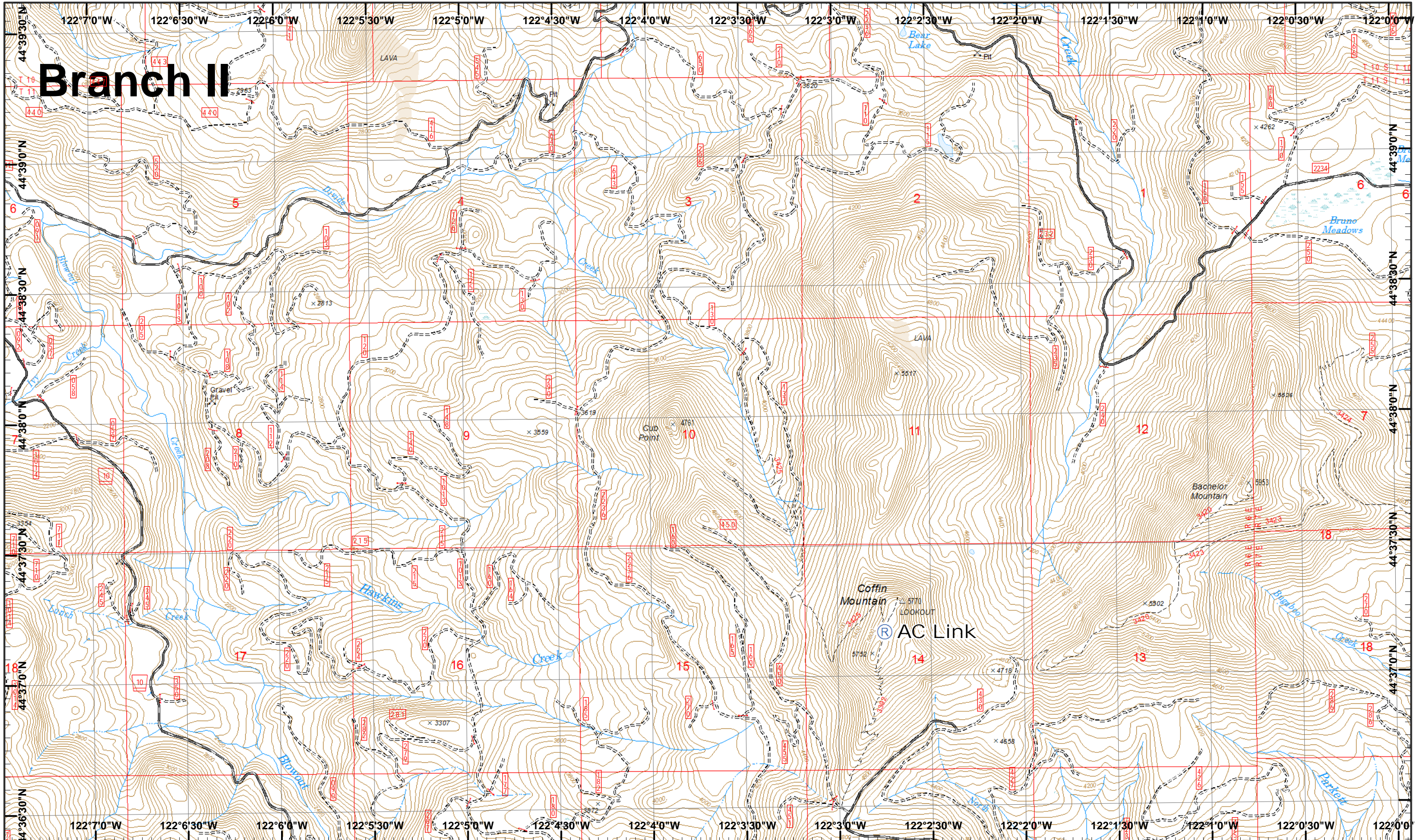
Page 11  
 ( ) Division  
 [ ] Branch



**Whitewater Incident**  
 September 5, 2017  
 GIS Est. 9/4/2017 1600  
 Whitewater Fire - 10,624 Acres  
 Little Devil Fire - 1,068 Acres  
 French Fire - 2 Acres  
 Scorpion Fire - 360 Acres  
 Map Created 9/4/2017 8:14:21 PM RDC

- North
- Drop Point
- IR Heat Source
- Sling Site
- Water Source
- Completed
- Uncontrolled Fire
- Helispot
- Completed Hand
- R - Road as Line

# Branch II



**Whitewater Incident**  
September 5, 2017

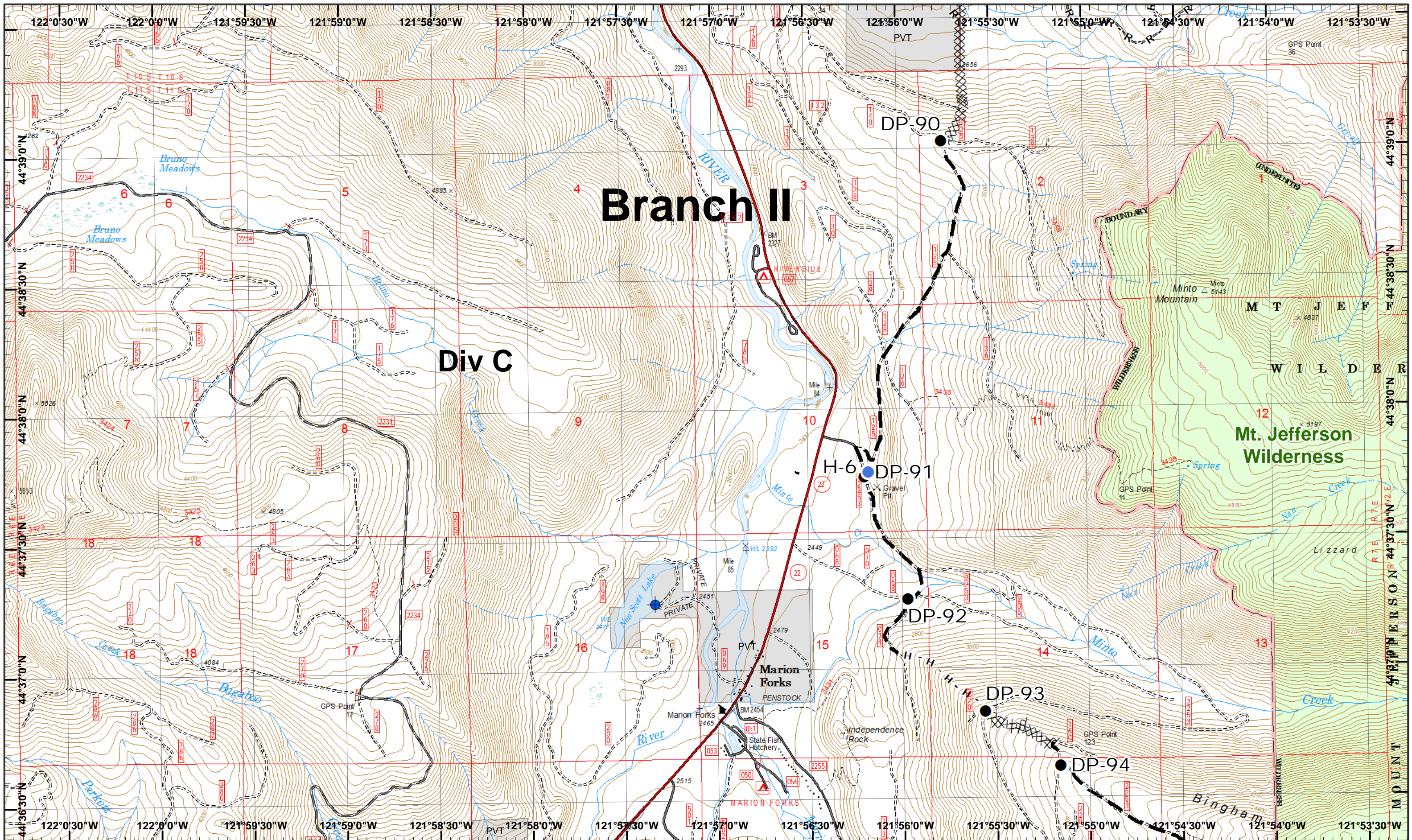
GIS Est. 9/4/2017 1600  
Whitewater Fire - 10,624 Acres  
Little Devil Fire - 1,068 Acres  
French Fire - 2 Acres  
Scorpion Fire - 360 Acres

Map Created 9/4/2017 8:14:31 PM RDC



1	2	3
4	5	6
7	8	9
10	11	12
13	14	15





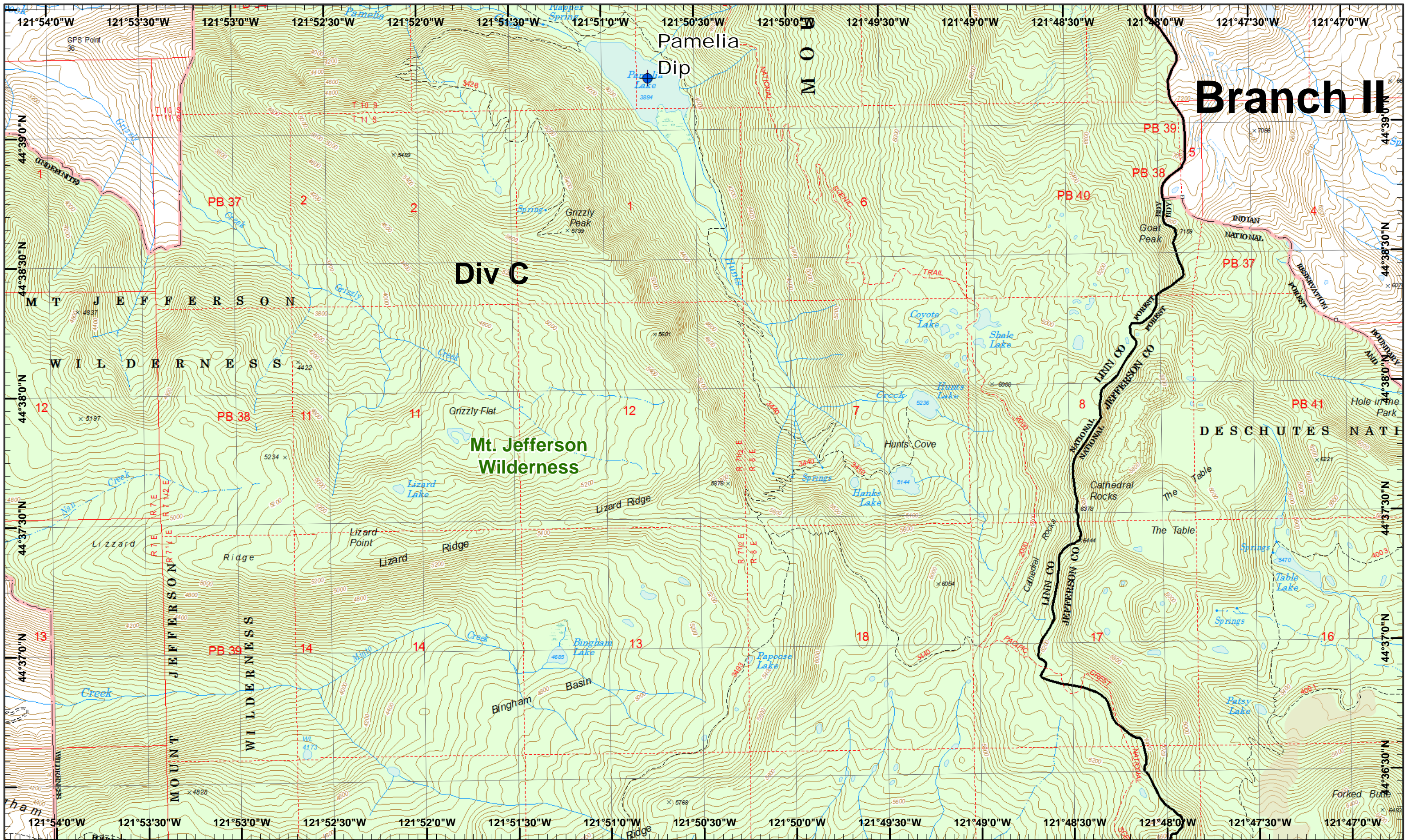
# Branch II

Div C

Mt. Jefferson Wilderness

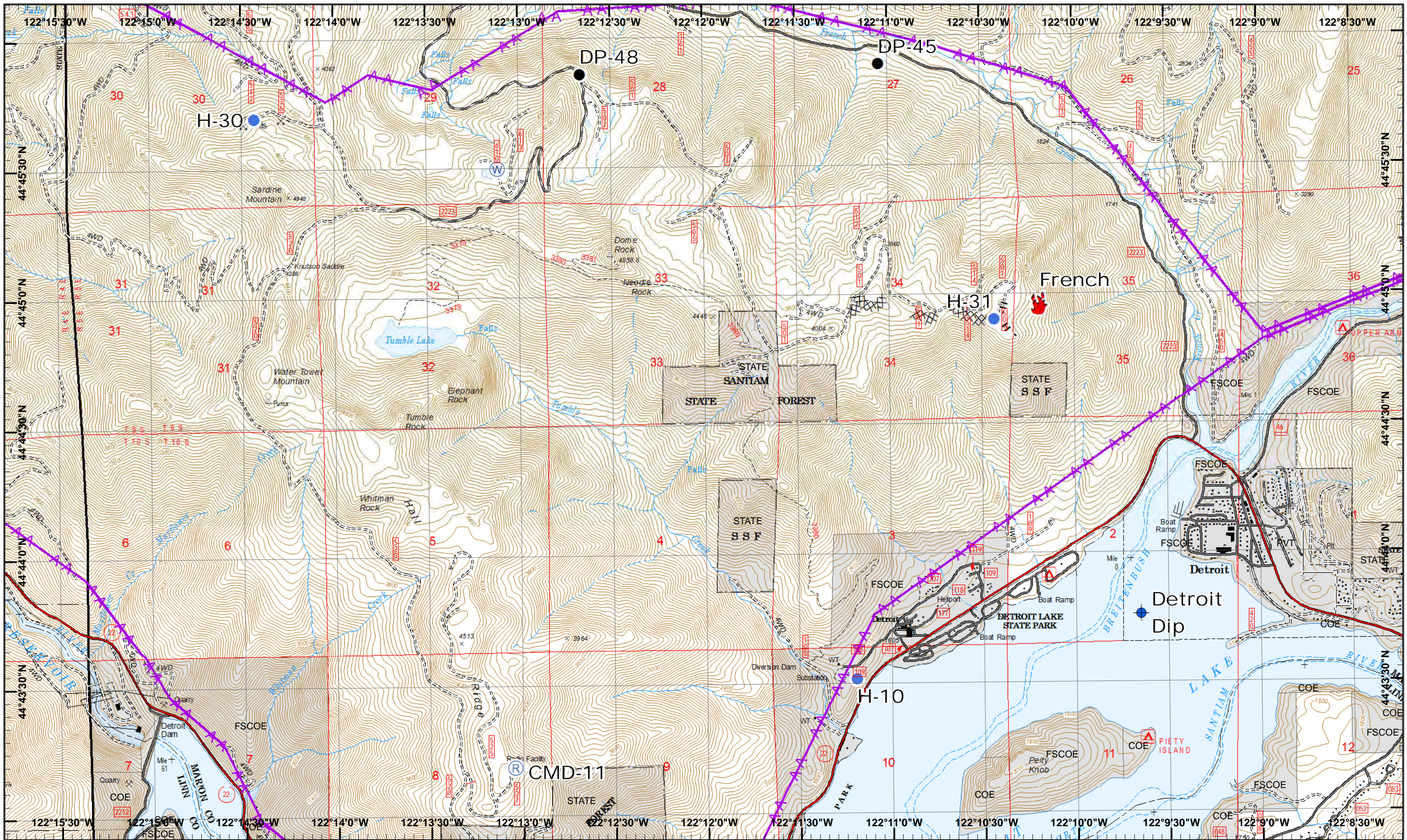


1	2	3
4	5	6
7	8	9
10	11	12
13	14	15



1	2	3
4	5	6
7	8	9
10	11	12
13	14	15





**Whitewater Incident**  
 September 5, 2017

GIS Est. 9/4/2017 1600  
 Whitewater Fire - 10,624 Acres  
 Little Devil Fire - 1,068 Acres  
 French Fire - 2 Acres  
 Scorpion Fire - 360 Acres

Map Created 9/4/2017 8:15:04 PM RDC

Dip Site  
 Fire Location  
 Helispot  
 Repeater  
 Water Source  
 Completed Dozer  
 Powerline  
 Drop Point  
 H - Completed Hand

1	2	3
4	5	6
7	8	9
10	11	12
13	14	15

Page 16  
 ) Division  
 [ Branch