

Whitewater, French, Little Devil Fires IAP

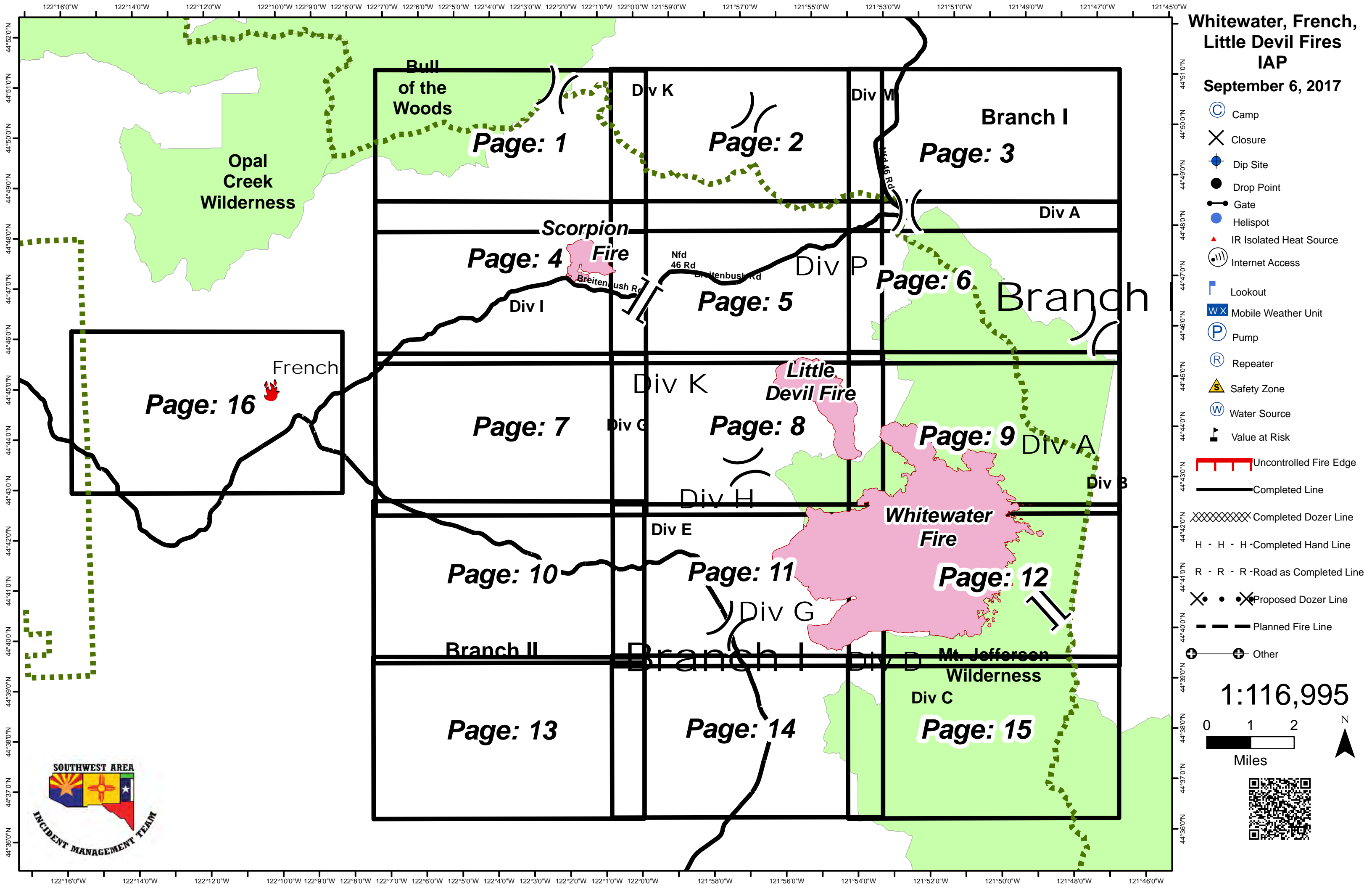
September 6, 2017

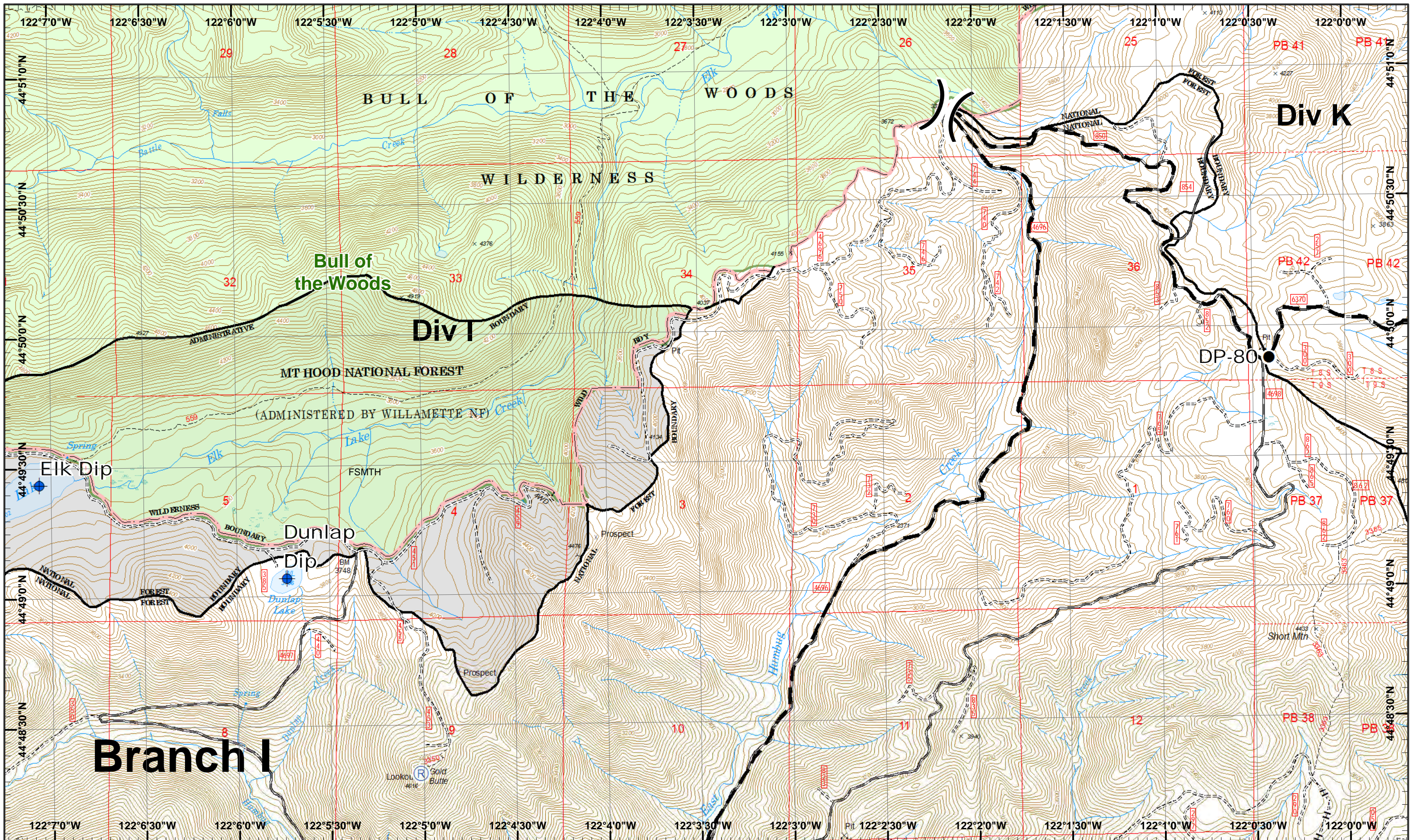
- ⊙ Camp
- ✕ Closure
- ⊕ Dip Site
- Drop Point
- ⚓ Gate
- ⊙ Helispot
- ⚠ IR Isolated Heat Source
- 📶 Internet Access
- 🏠 Lookout
- 📶 Mobile Weather Unit
- Ⓟ Pump
- Ⓜ Repeater
- ⚠ Safety Zone
- 🌊 Water Source
- 🎯 Value at Risk

- 🔴 Uncontrolled Fire Edge
- Completed Line
- ⊗ Completed Dozer Line
- H - H - H Completed Hand Line
- R - R - R Road as Completed Line
- ⊗ Proposed Dozer Line
- Planned Fire Line
- ⊕ Other

1:116,995

0 1 2 Miles





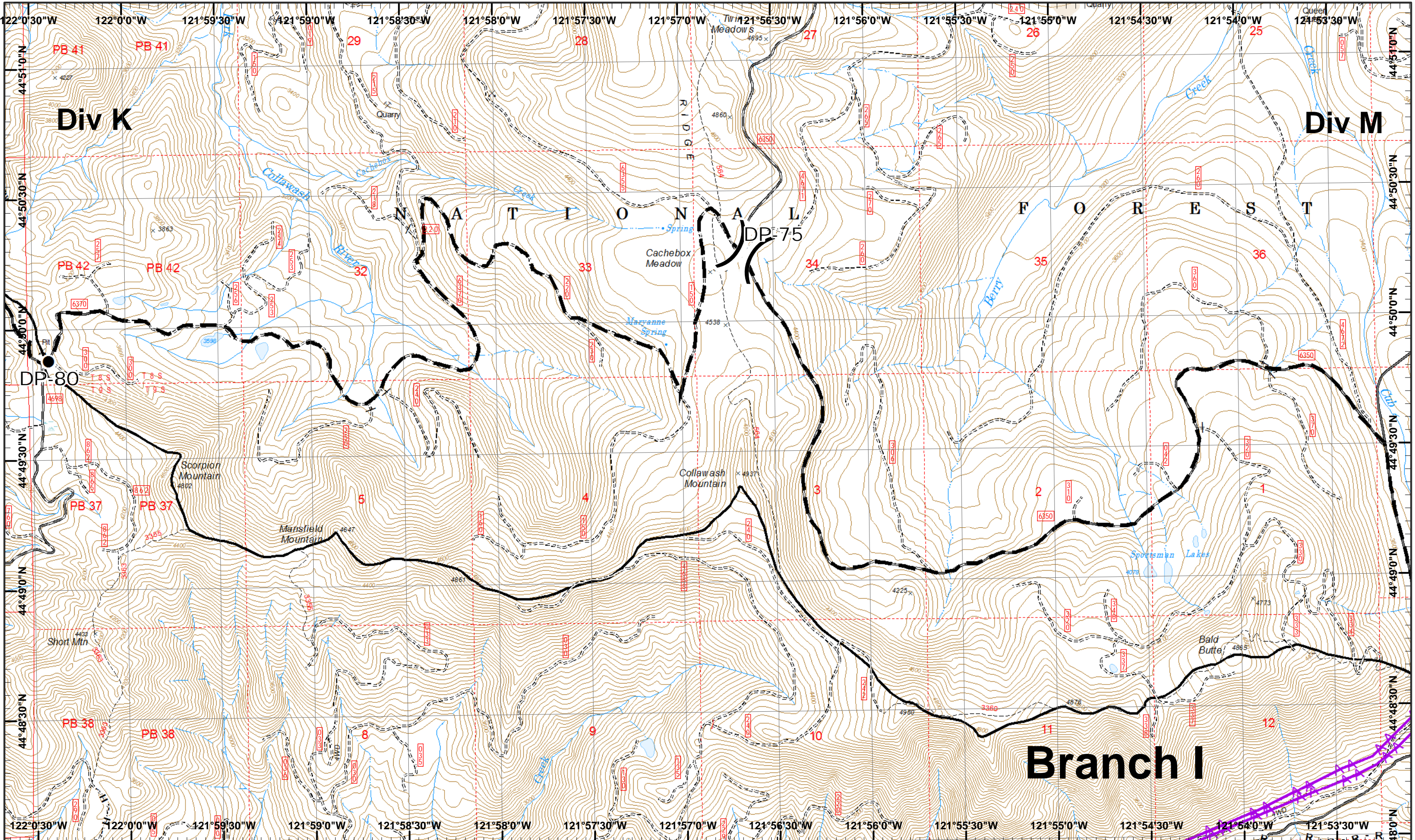
Whitewater Incident
 September 6, 2017

GIS Est. 9/5/2017 1500
 Whitewater Fire - 10,861 Acres
 Little Devil Fire - 1,261 Acres
 French Fire - 2 Acres
 Scorpion Fire - 427 Acres

Map Created 9/5/2017 8:10:57 PM RDC

Dip Site
 Repeater
 Planned Fire Line
 Drop Point
 Completed Hand




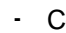

Page 1
 () Division
 [] Branch



Whitewater Incident
 September 6, 2017

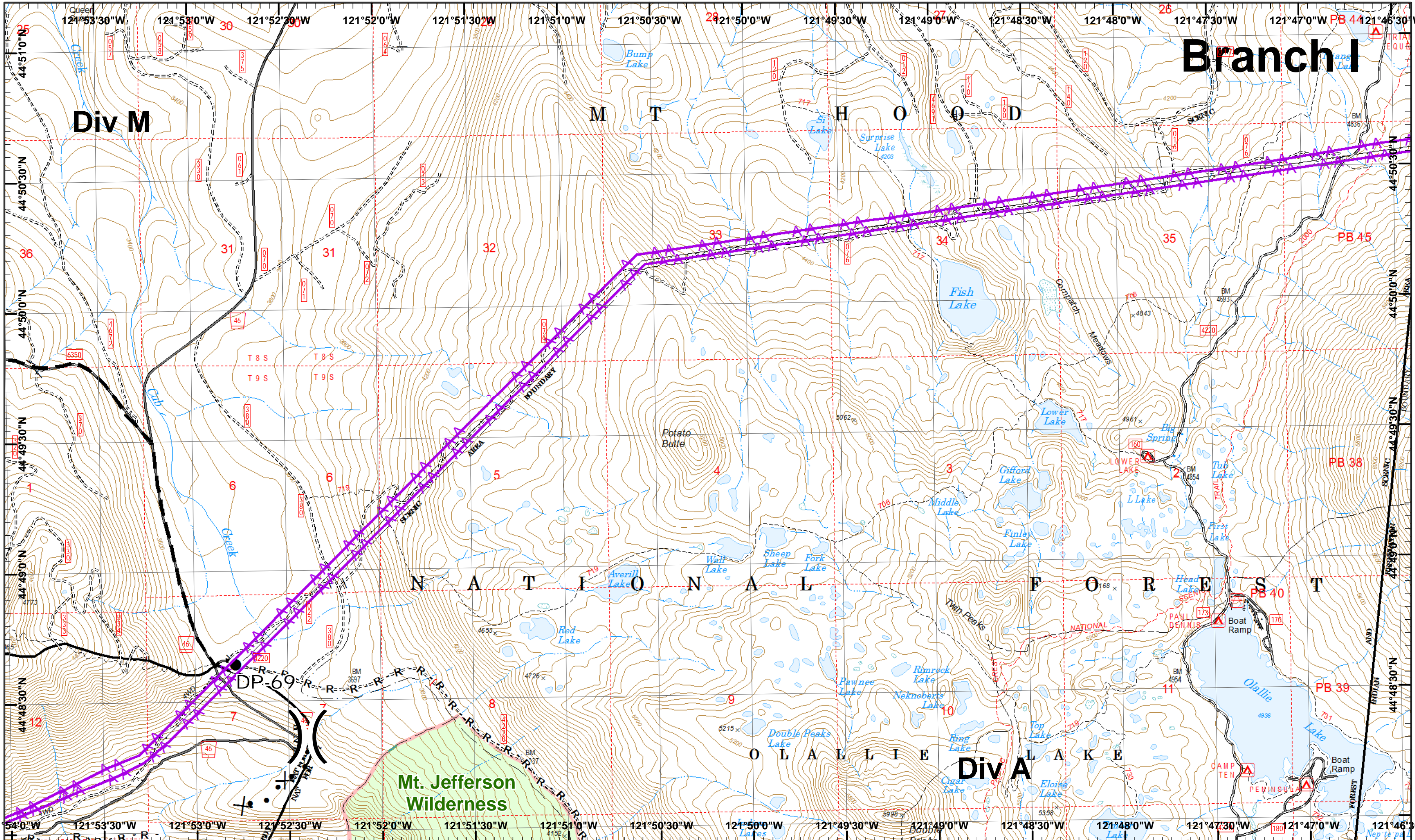
GIS Est. 9/5/2017 1500
 Whitewater Fire - 10,861 Acres
 Little Devil Fire - 1,261 Acres
 French Fire - 2 Acres
 Scorpion Fire - 427 Acres

Map Created 9/5/2017 8:12:27 PM RDC

 Drop Point
 R - Road as Line
 Powerline
 H - Completed Hand
 Planned Fire Line



1	2	3
4	5	6
7	8	9
10	11	12
13	14	15



Whitewater Incident
 September 6, 2017

GIS Est. 9/5/2017 1500
 Whitewater Fire - 10,861 Acres
 Little Devil Fire - 1,261 Acres
 French Fire - 2 Acres
 Scorpion Fire - 427 Acres

Map Created 9/5/2017 8:12:38 PM RDC

Drop Point
 R - Road as Line
 • Proposed Dozer
 Powerline
 H - Completed Hand
 Planned Fire Line

Branch I

Div M

Div A

Mt. Jefferson Wilderness

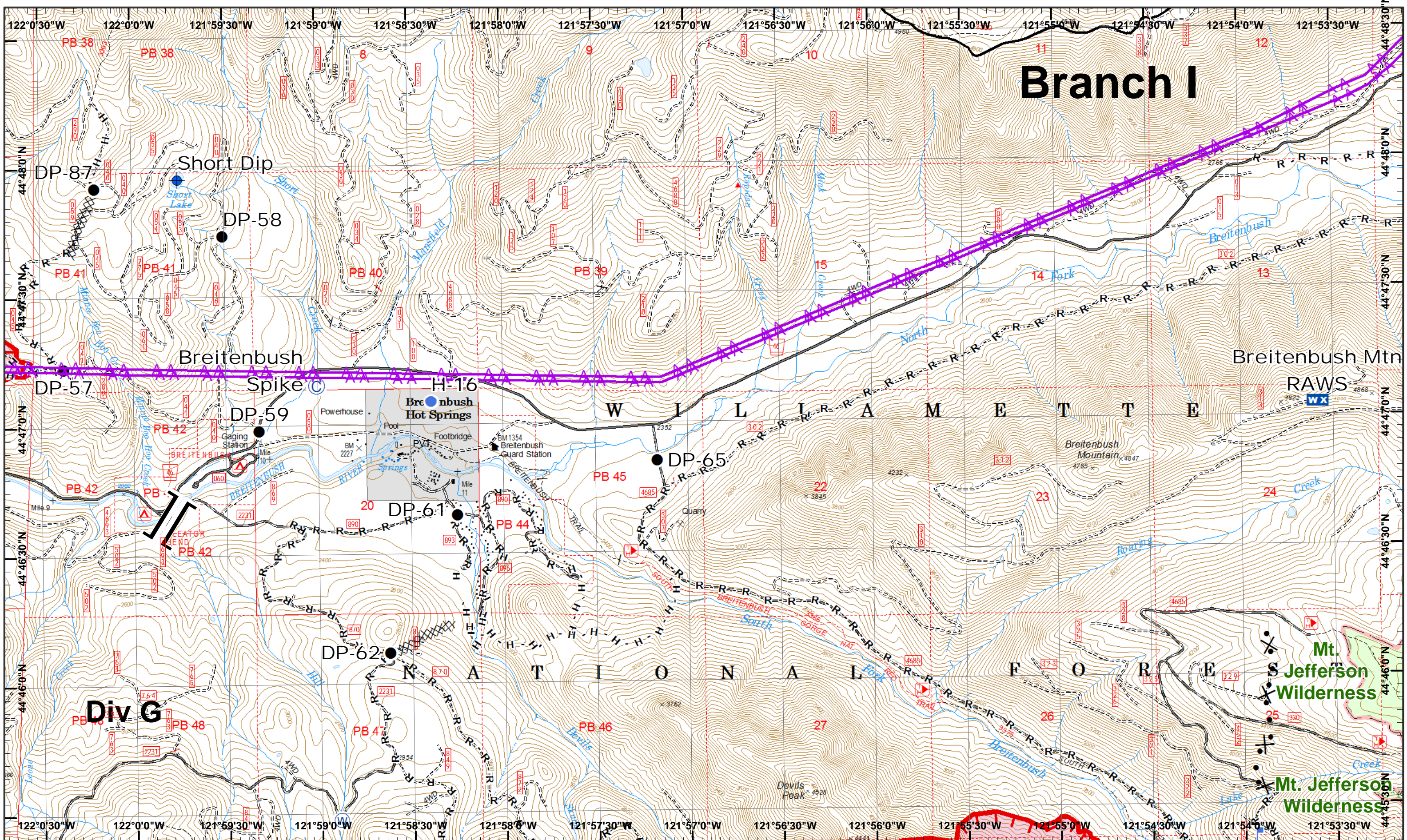


1	2	3
4	5	6
7	8	9
10	11	12
13	14	15

Page 3
)(Division
][Branch



Branch I



Whitewater Incident
 September 6, 2017

GIS Est. 9/5/2017 1500
 Whitewater Fire - 10,861 Acres
 Little Devil Fire - 1,261 Acres
 French Fire - 2 Acres
 Scorpion Fire - 427 Acres

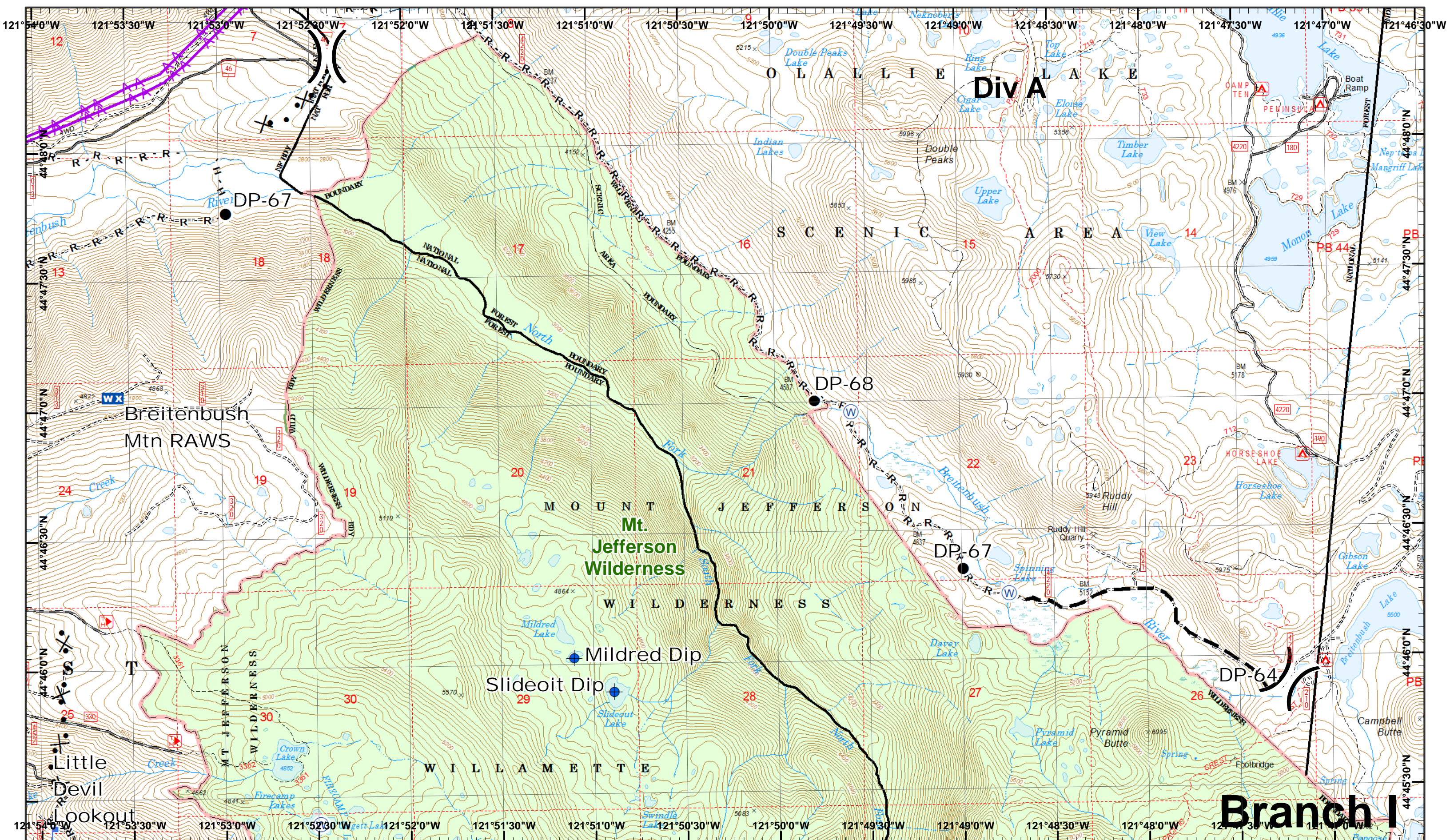
Map Created 9/5/2017 8:13:01 PM RDC

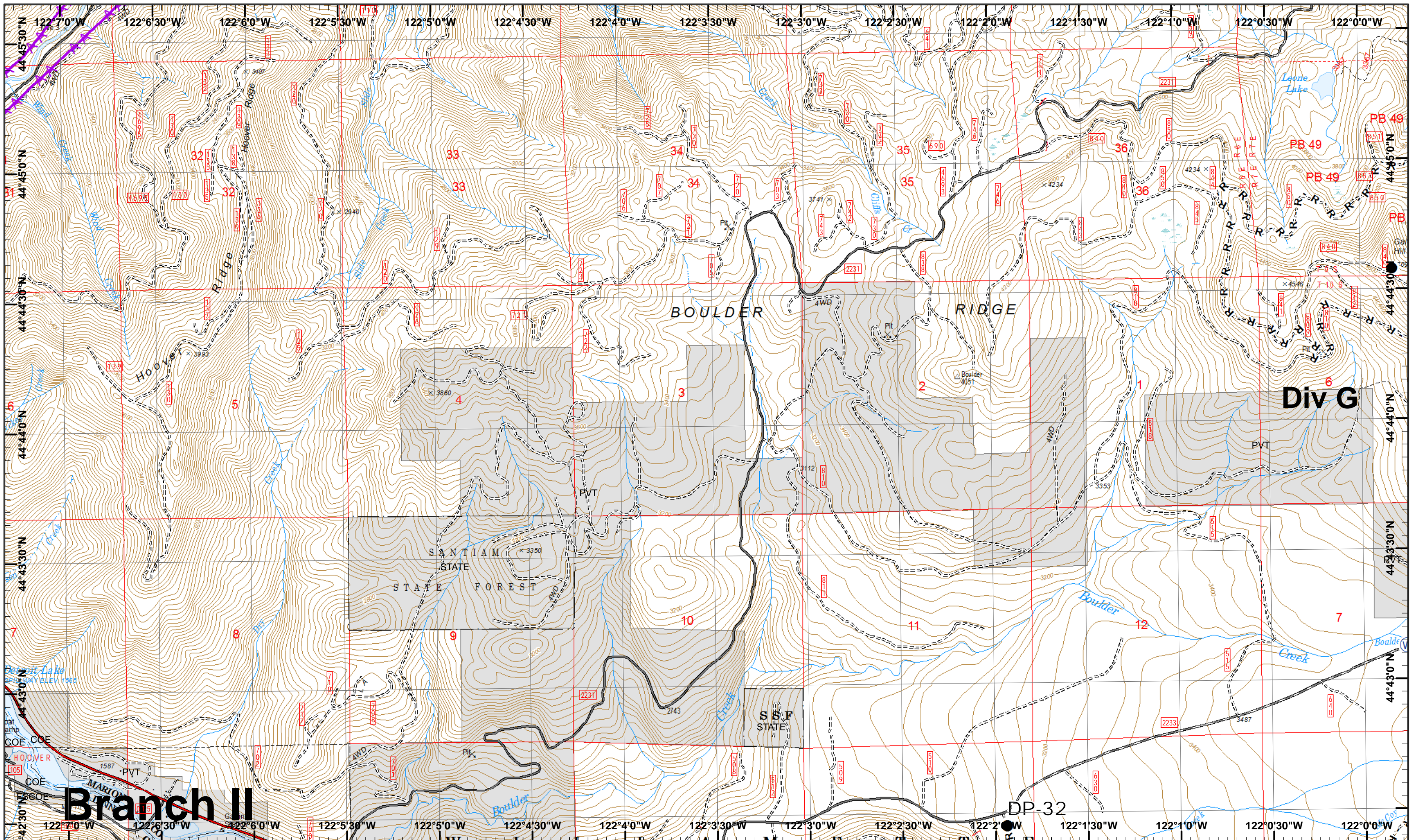
©
 Camp
 Dip Site
 Helispot
 Lookout
 Water Source
 Completed Dozer
 Road as Line
 Proposed Dozer

Drop Point
 IR Heat Source
 Mobile Weather
 Uncontrolled Fire
 Completed Hand
 Powerline

1 2 3
4 5 6
7 8 9
10 11 12
13 14 15

Page 5
)(Division
][Branch





Whitewater Incident
 September 6, 2017

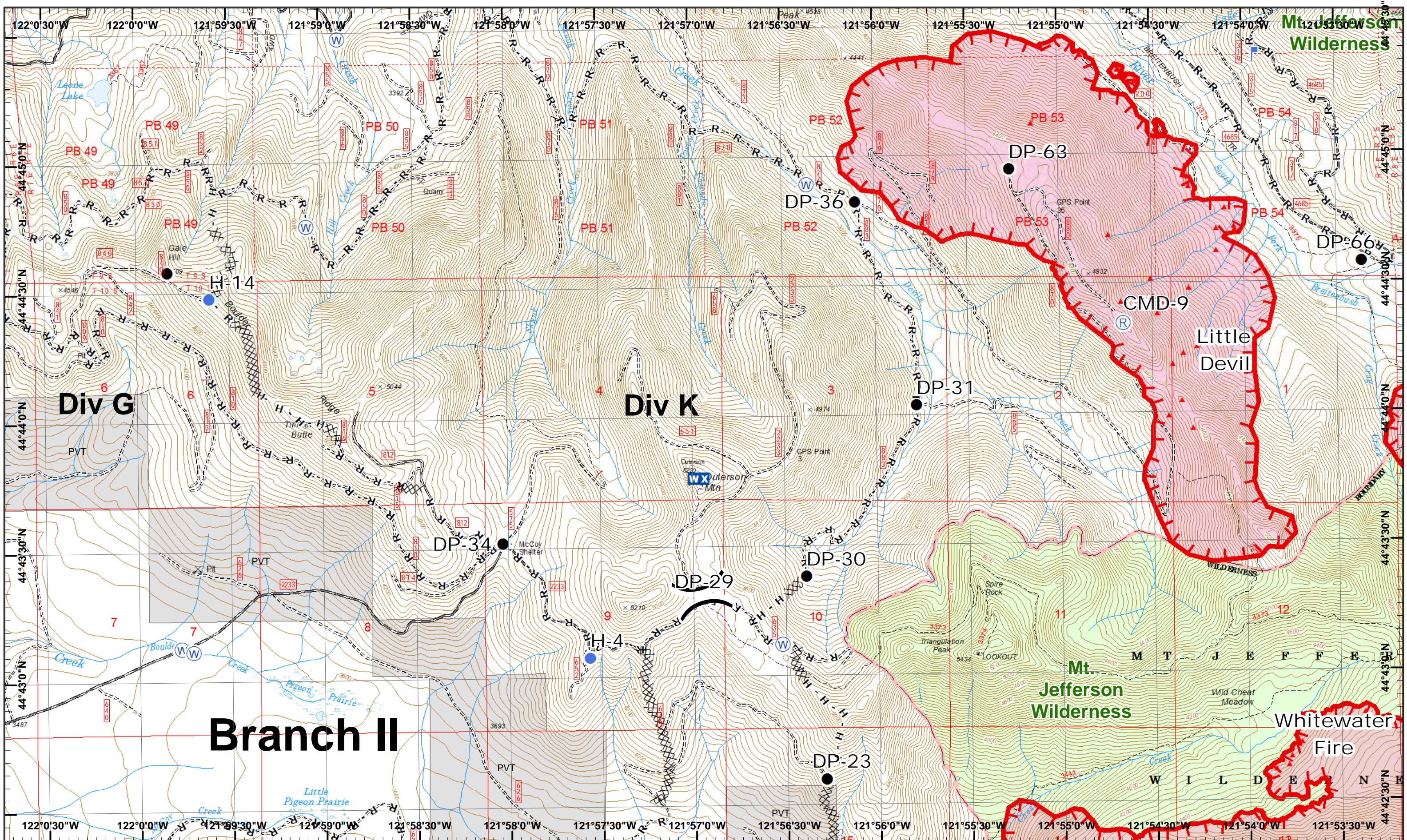
GIS Est. 9/5/2017 1500
 Whitewater Fire - 10,861 Acres
 Little Devil Fire - 1,261 Acres
 French Fire - 2 Acres
 Scorpion Fire - 427 Acres

Map Created 9/5/2017 8:13:23 PM RDC

Drop Point Water Source R - Road as Line
 Powerline

1	2	3
4	5	6
7	8	9
10	11	12
13	14	15

Page 7
)(Division
][Branch



Whitewater Incident
 September 6, 2017

GIS Est. 9/5/2017 1500
 Whitewater Fire - 10,861 Acres
 Little Devil Fire - 1,261 Acres
 French Fire - 2 Acres
 Scorpion Fire - 427 Acres

Map Created 9/5/2017 8:13:34 PM RDC

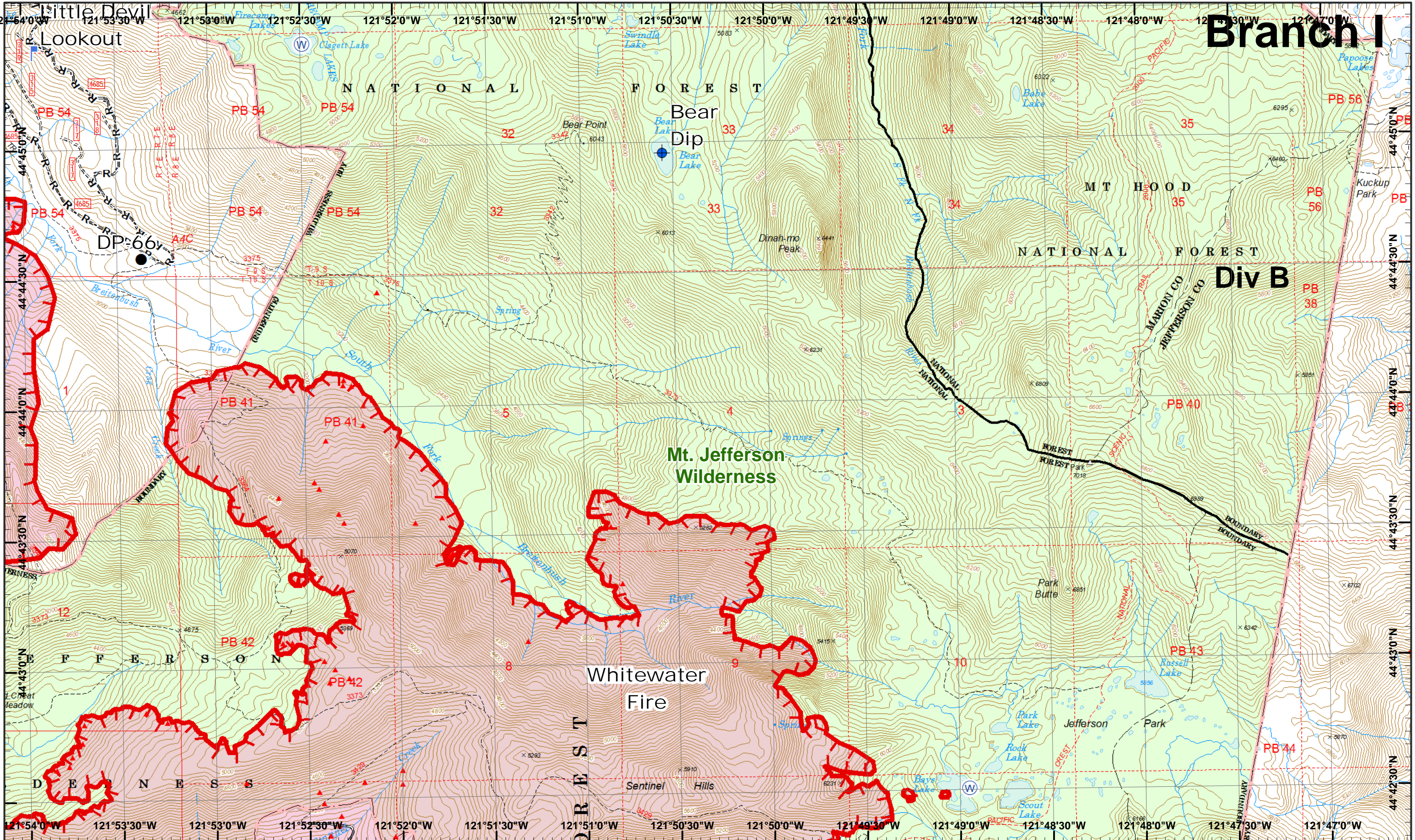
- North
- Drop Point
- IR Heat Source
- Mobile Weather
- Water Source
- Completed Dozer R - Road as Line
- Helispot
- Lookout
- Repeater
- Uncontrolled Fire
- Completed Hand

1	2	3
4	5	6
7	8	9
10	11	12
13	14	15

Page 8

() Division

[] Branch



Whitewater Incident
September 6, 2017

GIS Est. 9/5/2017 1500
Whitewater Fire - 10,861 Acres
Little Devil Fire - 1,261 Acres
French Fire - 2 Acres
Scorpion Fire - 427 Acres

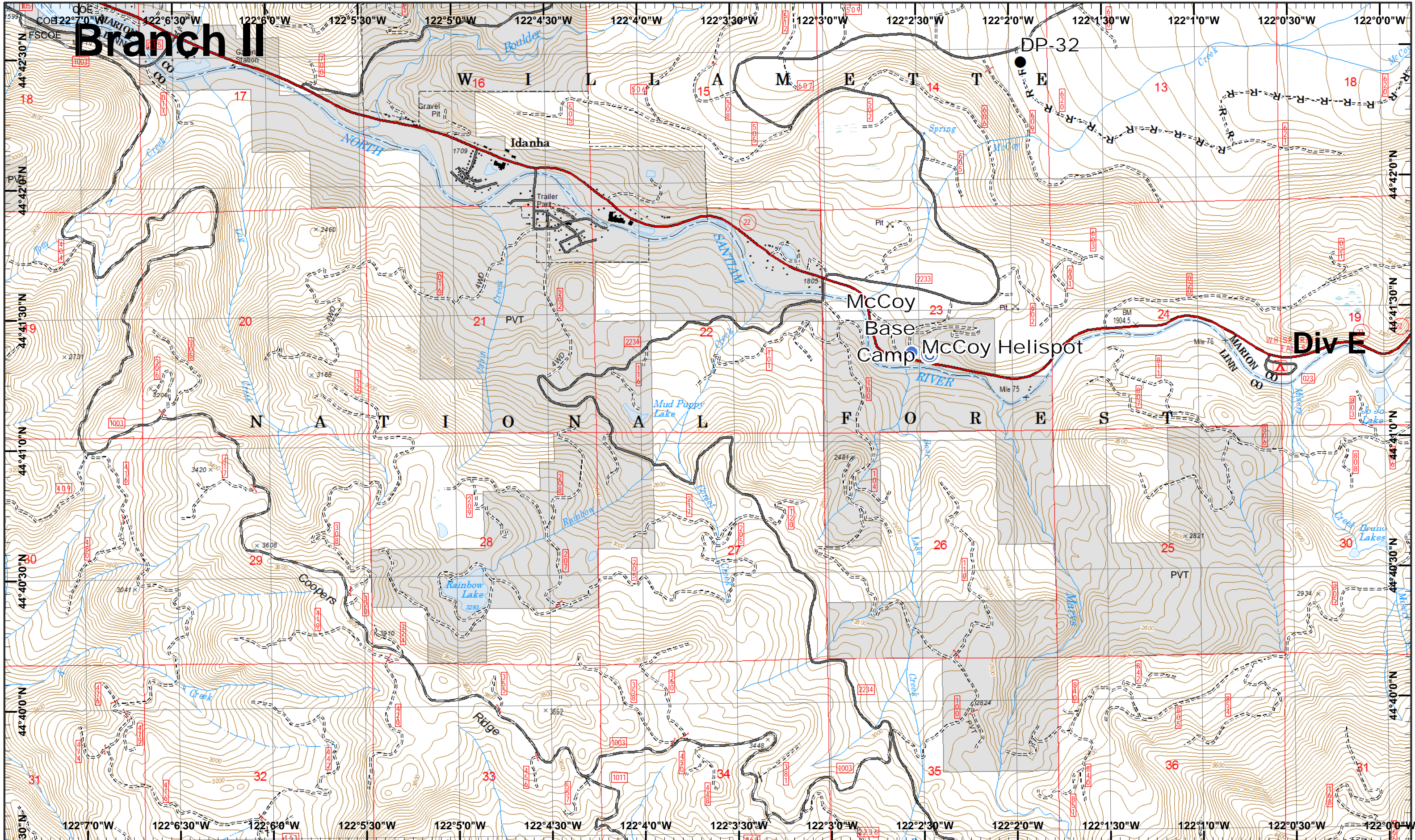
Map Created 9/5/2017 8:13:45 PM RDC

- Dip Site
- IR Heat Source
- Water Source
- Road as Line
- Proposed Dozer
- Drop Point
- Lookout
- Uncontrolled Fire



1	2	3
4	5	6
7	8	9
10	11	12
13	14	15





Branch II

Div E

Whitewater Incident
 September 6, 2017
 GIS Est. 9/5/2017 1500
 Whitewater Fire - 10,861 Acres
 Little Devil Fire - 1,261 Acres
 French Fire - 2 Acres
 Scorpion Fire - 427 Acres
 Map Created 9/5/2017 8:11:10 PM RDC

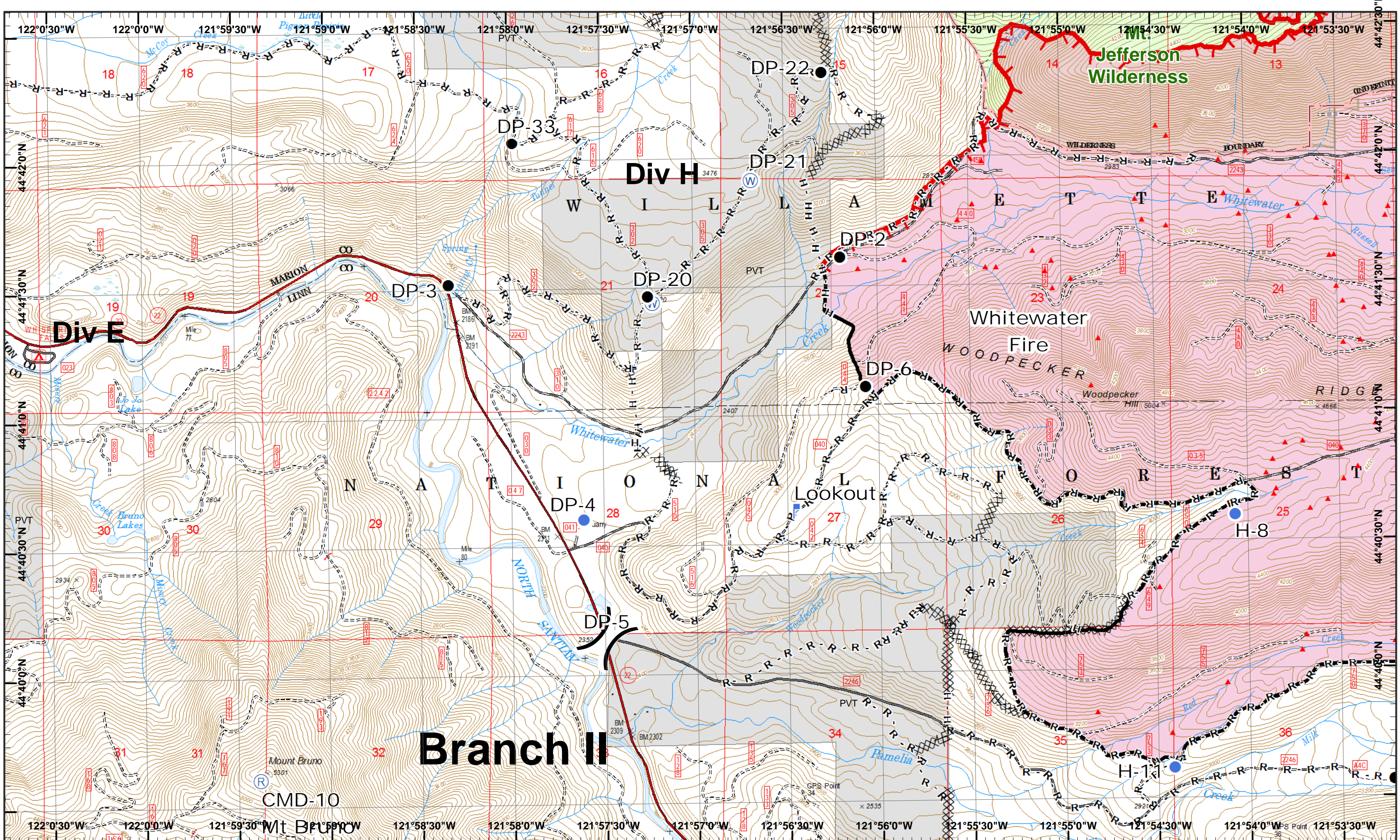
- © Camp
- Drop Point
- Road as Line
- Helispot



1	2	3
4	5	6
7	8	9
10	11	12
13	14	15

Page 10
)(Division
][Branch



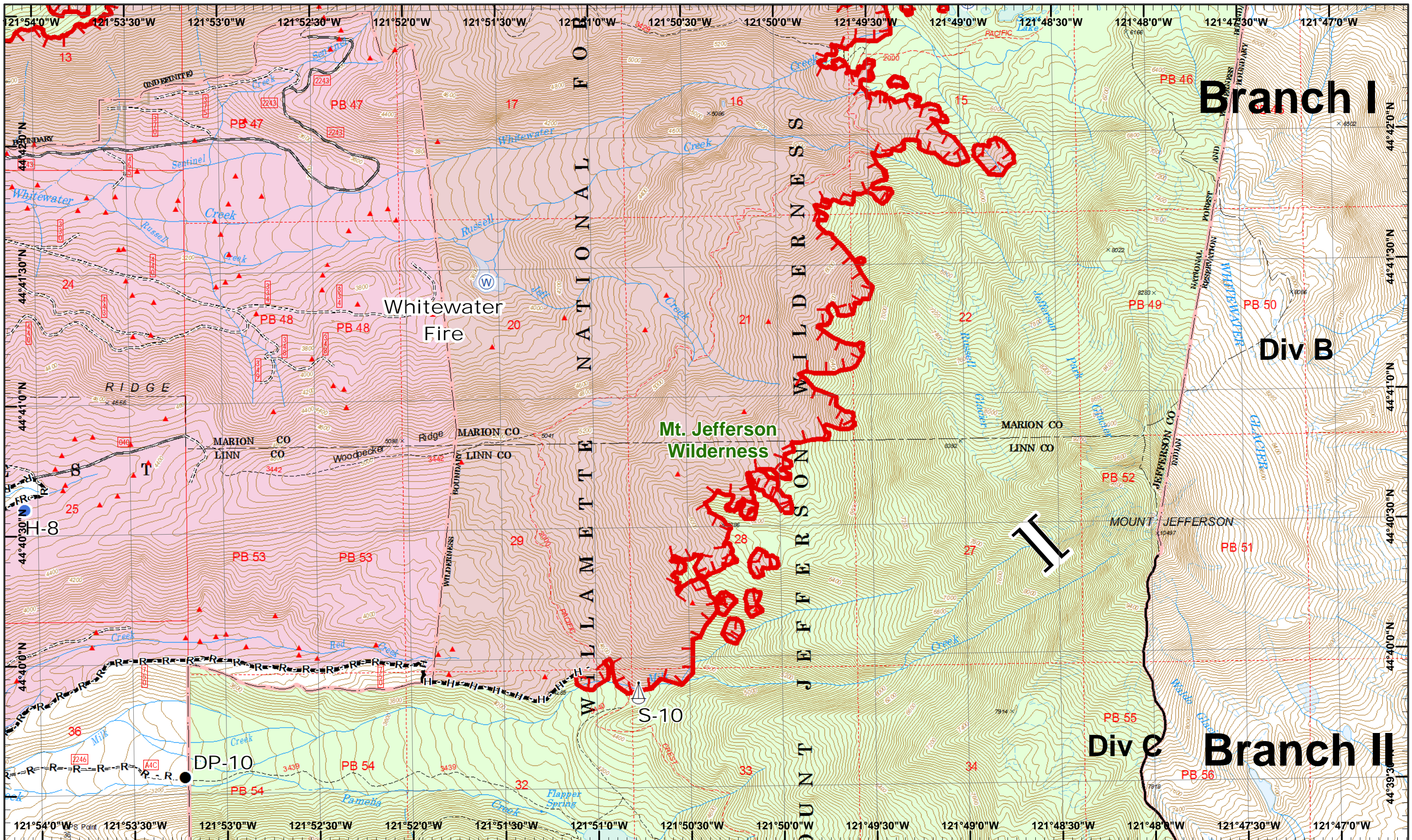


Whitewater Incident
 September 6, 2017

GIS Est. 9/5/2017 1500
 Whitewater Fire - 10,861 Acres
 Little Devil Fire - 1,261 Acres
 French Fire - 2 Acres
 Scorpion Fire - 427 Acres

Map Created 9/5/2017 8:11:23 PM RDC

- North
- Drop Point
- IR Heat Source
- Repeater
- Water Source
- Completed
- Completed Hand
- Helispot
- Lookout
- Uncontrolled Fire
- Completed Dozer
- Road as Line



Whitewater Incident
 September 6, 2017

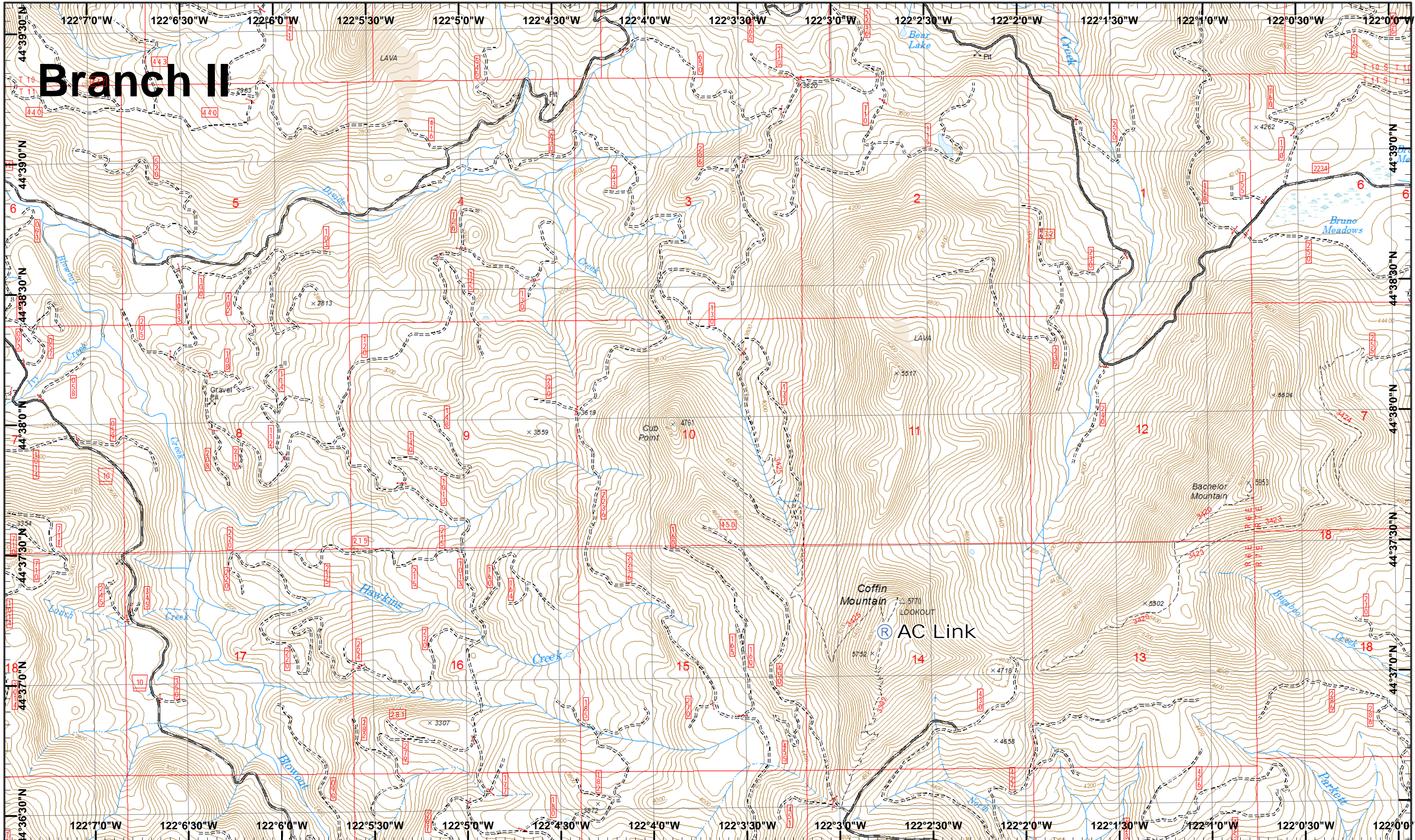
GIS Est. 9/5/2017 1500
 Whitewater Fire - 10,861 Acres
 Little Devil Fire - 1,261 Acres
 French Fire - 2 Acres
 Scorpion Fire - 427 Acres
 Map Created 9/5/2017 8:11:34 PM RDC

- North
- Drop Point
- IR Heat Source
- Sling Site
- Water Source
- Completed
- Uncontrolled Fire
- Helispot
- Completed Hand
- Road as Line



1	2	3
4	5	6
7	8	9
10	11	12
13	14	15

Branch II



Whitewater Incident
September 6, 2017

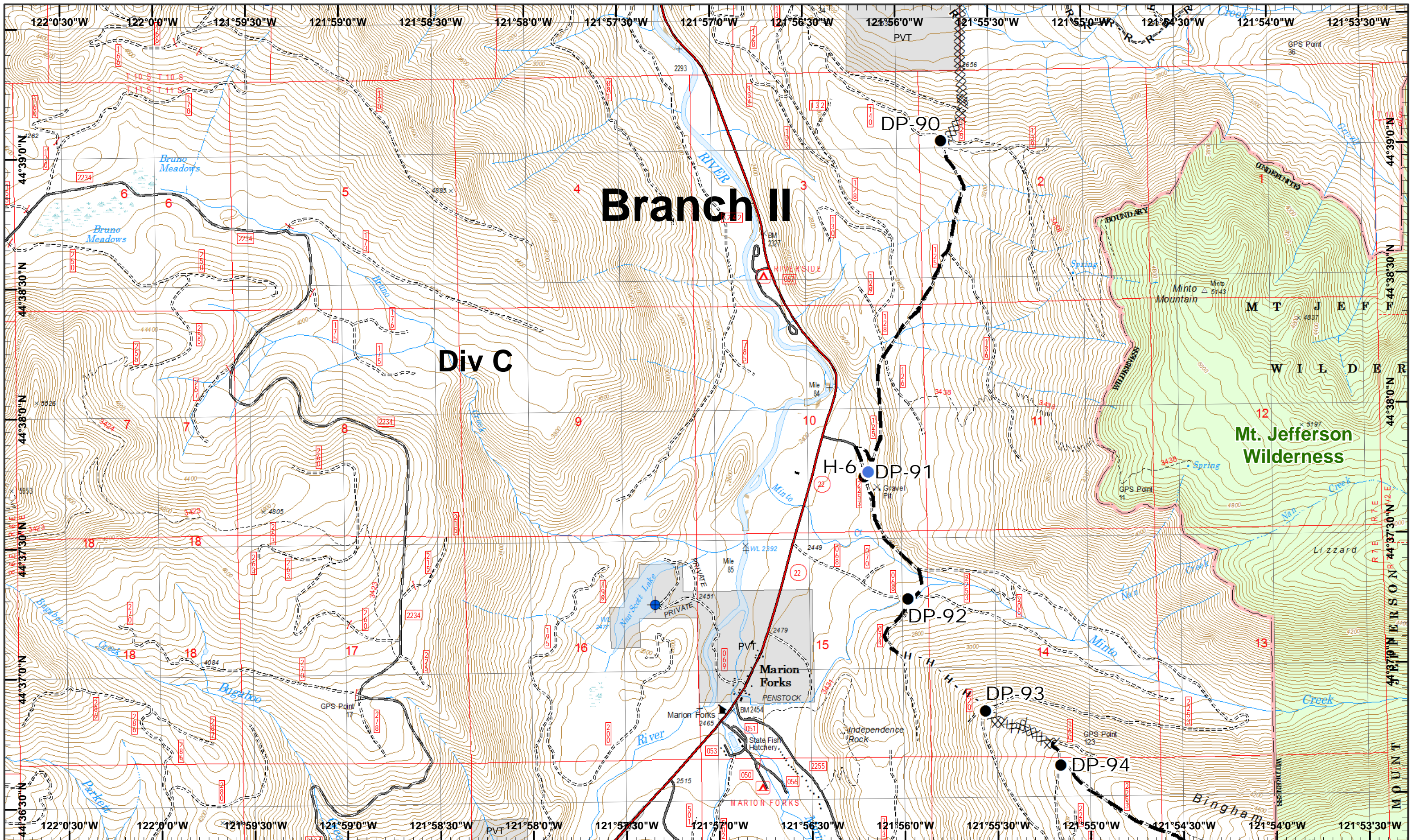
GIS Est. 9/5/2017 1500
Whitewater Fire - 10,861 Acres
Little Devil Fire - 1,261 Acres
French Fire - 2 Acres
Scorpion Fire - 427 Acres

Map Created 9/5/2017 8:11:44 PM RDC

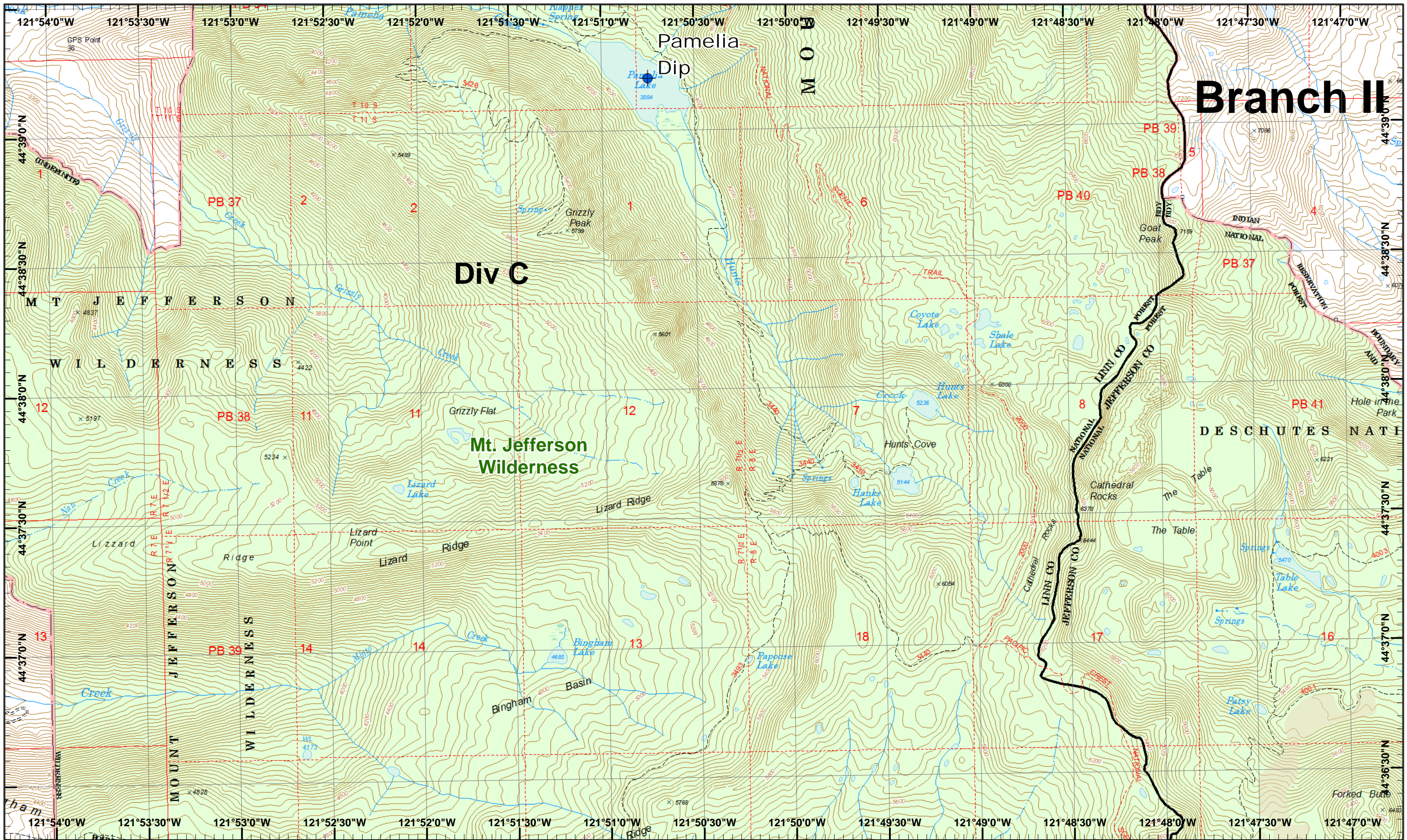


1	2	3
4	5	6
7	8	9
10	11	12
13	14	15

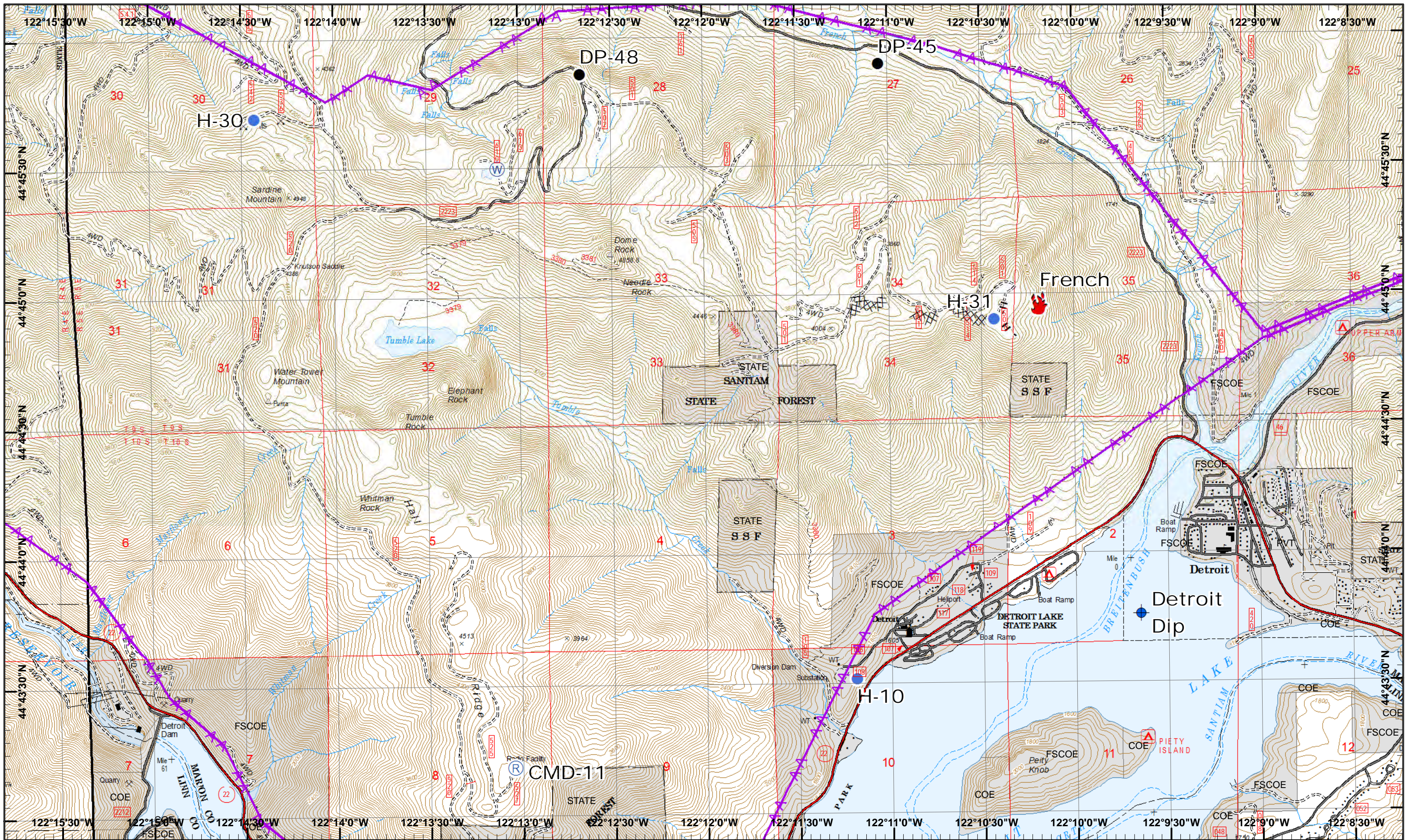




1	2	3
4	5	6
7	8	9
10	11	12
13	14	15



1	2	3
4	5	6
7	8	9
10	11	12
13	14	15



Whitewater Incident
 September 6, 2017

GIS Est. 9/5/2017 1500
 Whitewater Fire - 10,861 Acres
 Little Devil Fire - 1,261 Acres
 French Fire - 2 Acres
 Scorpion Fire - 427 Acres

Map Created 9/5/2017 8:12:16 PM RDC

Dip Site
 Fire Location
 Helispot
 Repeater
 Water Source
 Completed Dozer
 Powerline
 Drop Point
 H - Completed Hand

1	2	3
4	5	6
7	8	9
10	11	12
13	14	15

Page 16
) Division
 [Branch