

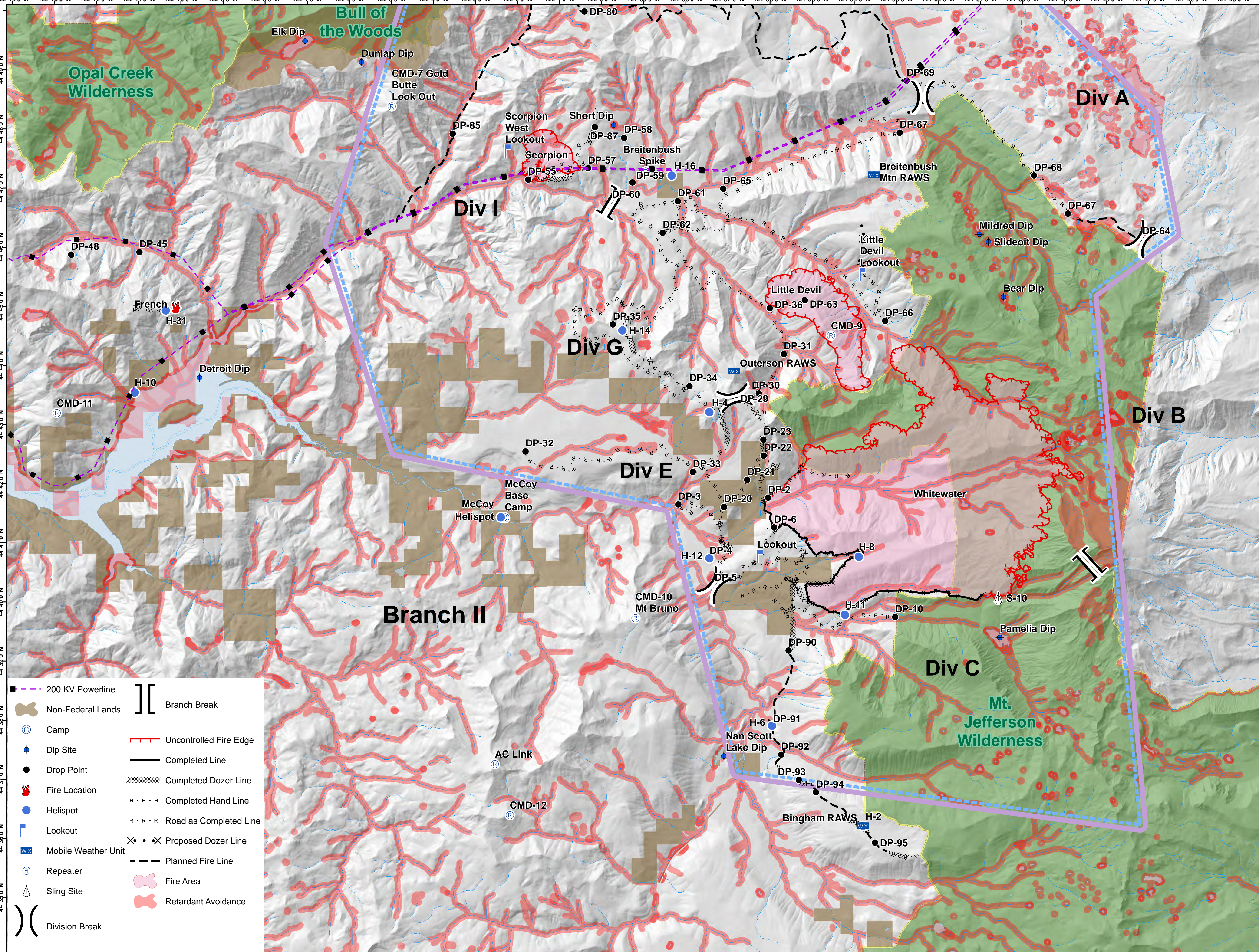
Whitewater Fire Pilot's Map

OR-WIF-170123

September 6, 2017



Label	Latitude	Longitude
Pamela Dip	N44° 39.203'	W121° 50.753'
Nan Scott Lake Dip	N44° 37.260'	W121° 57.333'
Short Dip	N44° 47.954'	W121° 59.751'
Detroit Dip	N44° 43.764'	W122° 9.654'
Elk Dip	N44° 49.437'	W122° 7.064'
Dunlap Dip	N44° 49.071'	W122° 5.730'
Mildred Dip	N44° 46.027'	W121° 51.106'
Slideoit Dip	N44° 45.896'	W121° 50.892'
Bear Dip	N44° 44.960'	W121° 50.557'
DP-2	N44° 41.616'	W121° 56.206'
DP-3	N44° 41.523'	W121° 58.333'
DP-32	N44° 42.452'	W122° 1.942'
DP-33	N44° 42.070'	W121° 57.980'
DP-34	N44° 43.522'	W121° 58.033'
DP-60	N44° 46.641'	W121° 59.815'
DP-61	N44° 46.652'	W121° 58.252'
DP-65	N44° 46.853'	W121° 57.170'
DP-66	N44° 44.581'	W121° 53.369'
DP-69	N44° 48.642'	W121° 52.784'
DP-4	N44° 40.589'	W121° 57.607'
DP-35	N44° 44.582'	W121° 59.832'
DP-62	N44° 46.121'	W121° 58.623'
DP-10	N44° 39.568'	W121° 53.226'
DP-20	N44° 41.470'	W121° 57.251'
DP-23	N44° 42.603'	W121° 56.295'
DP-29	N44° 43.302'	W121° 56.947'
DP-90	N44° 39.029'	W121° 55.765'
DP-91	N44° 37.740'	W121° 56.201'
DP-92	N44° 37.270'	W121° 55.974'
DP-93	N44° 36.835'	W121° 55.563'
DP-94	N44° 36.623'	W121° 55.162'
DP-95	N44° 35.758'	W121° 53.780'
DP-21	N44° 41.924'	W121° 56.691'
DP-5	N44° 40.143'	W121° 57.498'
DP-6	N44° 41.112'	W121° 56.073'
DP-63	N44° 44.947'	W121° 55.271'
DP-45	N44° 45.893'	W122° 11.051'
DP-48	N44° 45.863'	W122° 12.669'
DP-171	N44° 8.226'	W121° 58.391'
DP-68	N44° 47.007'	W121° 49.788'
DP-67	N44° 46.352'	W121° 48.994'
DP-64	N44° 45.903'	W121° 47.238'
DP-55	N44° 47.049'	W122° 1.803'
DP-59	N44° 46.980'	W121° 59.323'
DP-58	N44° 47.735'	W121° 59.510'
DP-57	N44° 47.227'	W122° 0.378'
DP-30	N44° 43.385'	W121° 56.393'
DP-31	N44° 44.040'	W121° 55.785'
DP-36	N44° 44.826'	W121° 56.105'
DP-22	N44° 42.331'	W121° 56.295'
DP-67	N44° 47.760'	W121° 52.965'
DP-80	N44° 49.881'	W122° 0.414'
DP-87	N44° 47.923'	W122° 0.204'
DP-85	N44° 47.841'	W122° 3.583'
French	N44° 44.964'	W122° 10.188'
Helibase	N44° 26.023'	W121° 56.427'
H-2	N44° 36.047'	W121° 54.058'
H-10	N44° 43.520'	W122° 11.194'
H-11	N44° 39.621'	W121° 54.418'
H-15	N44° 25.170'	W121° 51.439'
H-4	N44° 43.078'	W121° 57.568'
H-8	N44° 40.600'	W121° 54.073'
H-12	N44° 40.607'	W121° 57.614'
H-14	N44° 44.480'	W121° 59.608'
H-6	N44° 37.760'	W121° 56.180'
H-16	N44° 47.089'	W121° 58.391'
H-30	N44° 45.698'	W122° 14.432'
H-31	N44° 44.904'	W122° 10.436'
McCoy Helispot	N44° 41.343'	W122° 2.545'
Lookout	N44° 40.631'	W121° 56.472'
Little Devil Lookout	N44° 45.376'	W121° 53.947'
Scorpion West Lookout	N44° 47.538'	W122° 2.335'
Bingham RAWS	N44° 36.047'	W121° 54.058'
Outerson RAWS	N44° 43.767'	W121° 56.968'
Breitenbush Mtn RAW	N44° 47.053'	W121° 53.588'
Hoodoo RAWS	N44° 24.073'	W121° 53.042'
Whitewater CMD-8	N44° 24.121'	W121° 52.952'
CMD-9	N44° 44.348'	W121° 54.660'
CMD-11	N44° 43.190'	W122° 13.045'
CMD-10 Mt Bruno	N44° 39.609'	W121° 59.383'
CMD-7 Gold Butte Loo	N44° 48.318'	W122° 5.020'
CMD-12	N44° 36.303'	W122° 2.413'
CMD-15 Sisi Look Out	N44° 53.952'	W121° 50.683'
ICP	N44° 24.510'	W121° 52.293'
Santium Helibase	N44° 25.906'	W121° 56.692'
AC Link	N44° 37.172'	W122° 2.751'
S-10	N44° 39.867'	W121° 50.782'



	200 KV Powerline		Branch Break
	Non-Federal Lands		Uncontrolled Fire Edge
	Camp		Completed Line
	Dip Site		Completed Dozer Line
	Drop Point		Completed Hand Line
	Fire Location		Road as Completed Line
	Helispot		Proposed Dozer Line
	Lookout		Planned Fire Line
	Mobile Weather Unit		Fire Area
	Repeater		Retardant Avoidance
	Sling Site		
	Division Break		

