

Whitewater Incident
 September 8, 2017

IR @ 9/5/2017 1943
 Whitewater Fire - 10,934 Acres
 Little Devil Fire - 1,598 Acres
 French Fire - 2 Acres
 Scorpion Fire - 606 Acres
 Potato Hill Fire - 199 Acres

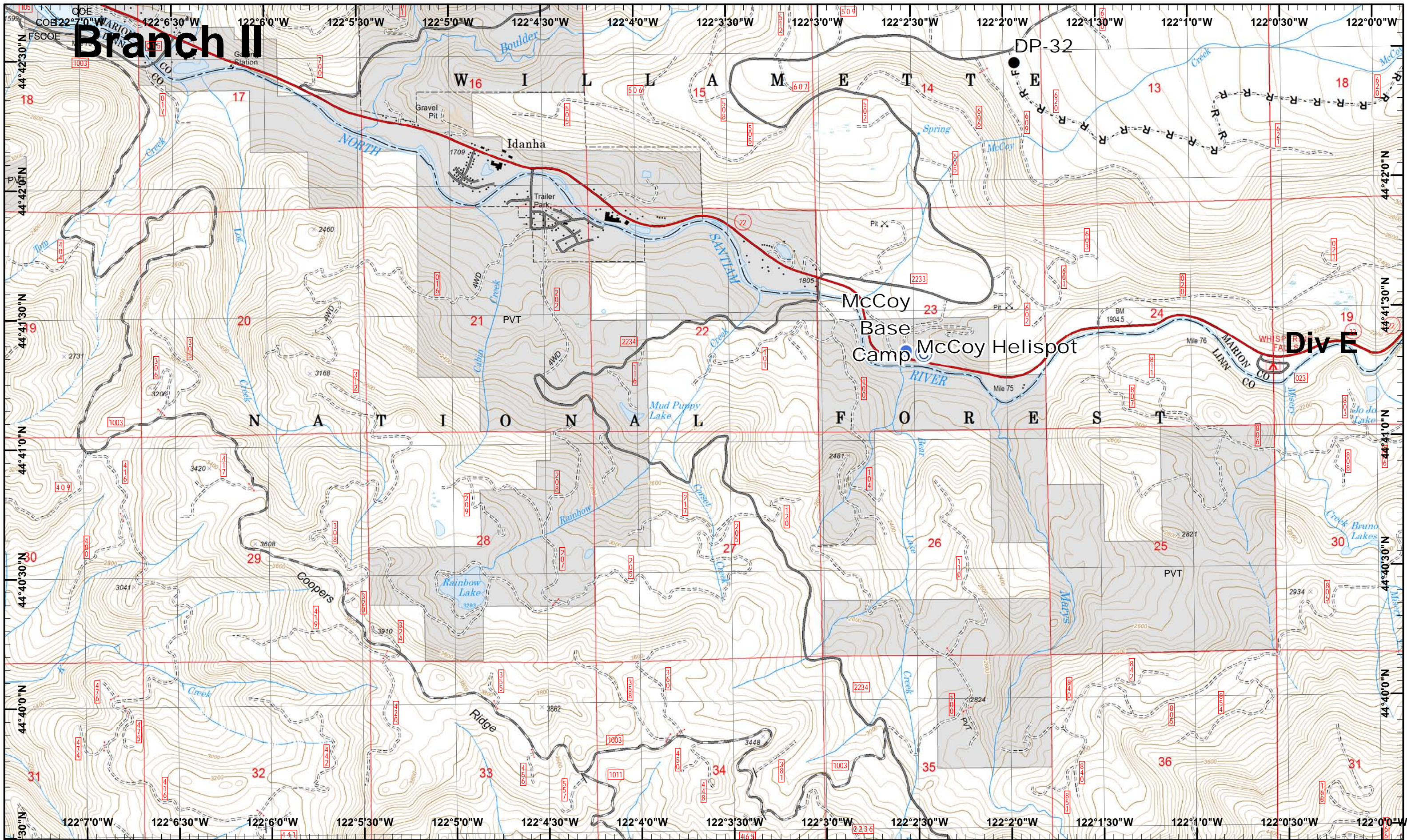
Map Created 9/7/2017 11:36:01 PM RDC

Dip Site
 Repeater
 Planned Fire Line

Drop Point
 Completed Hand



1	2	3
4	5	6
7	8	9
10	11	12
13	14	15



Branch II

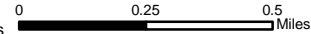
Div E

Whitewater Incident
 September 8, 2017

IR © 9/5/2017 1943
 Whitewater Fire - 10,934 Acres
 Little Devil Fire - 1,598 Acres
 French Fire - 2 Acres
 Scorpion Fire - 606 Acres
 Potato Hill Fire - 199 Acres
 Map Created 9/7/2017 11:36:29 PM RDC



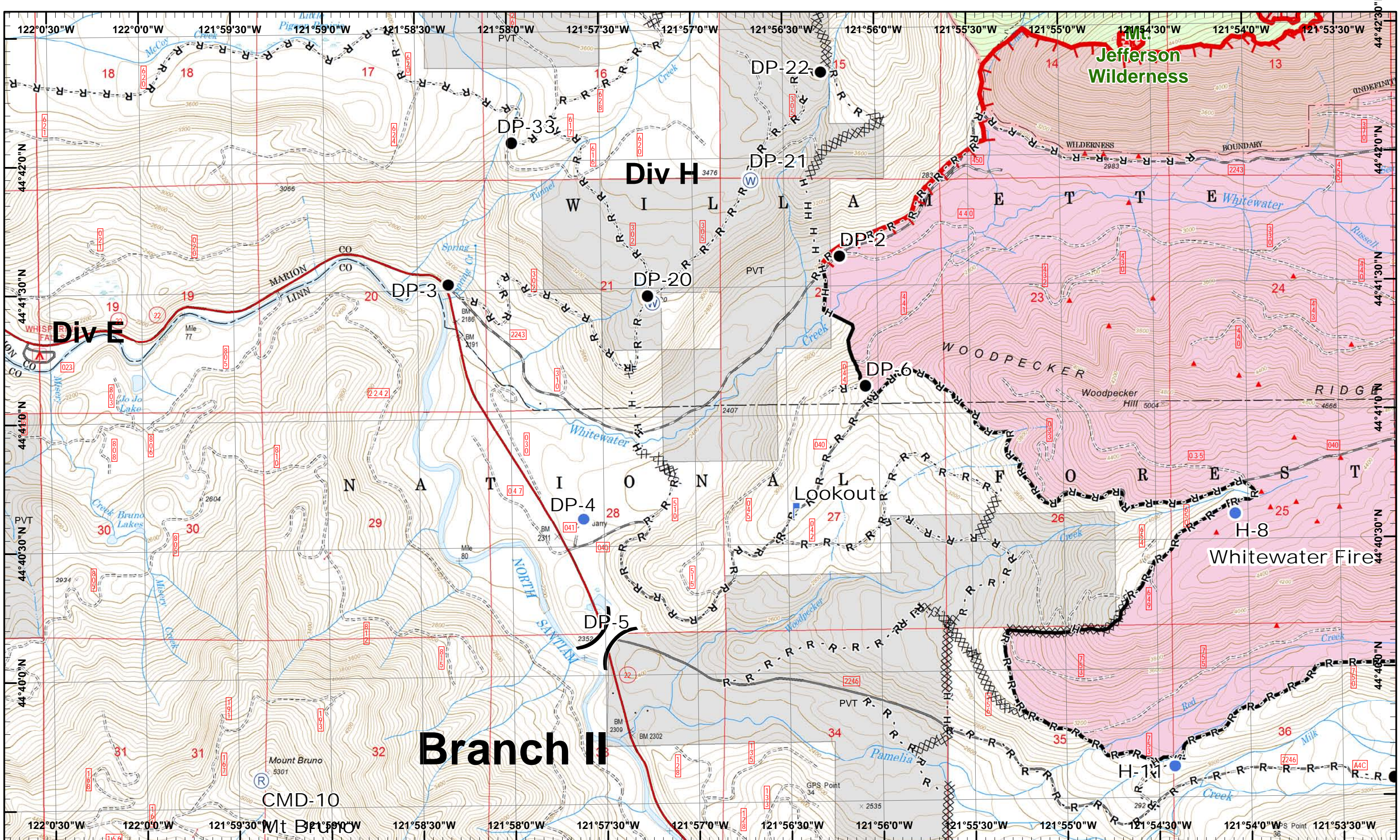
- © Camp
- Drop Point
- R - Road as Line
- Helispot



1	2	3
4	5	6
7	8	9
10	11	12
13	14	15

Page 10
)(Division
)(Branch



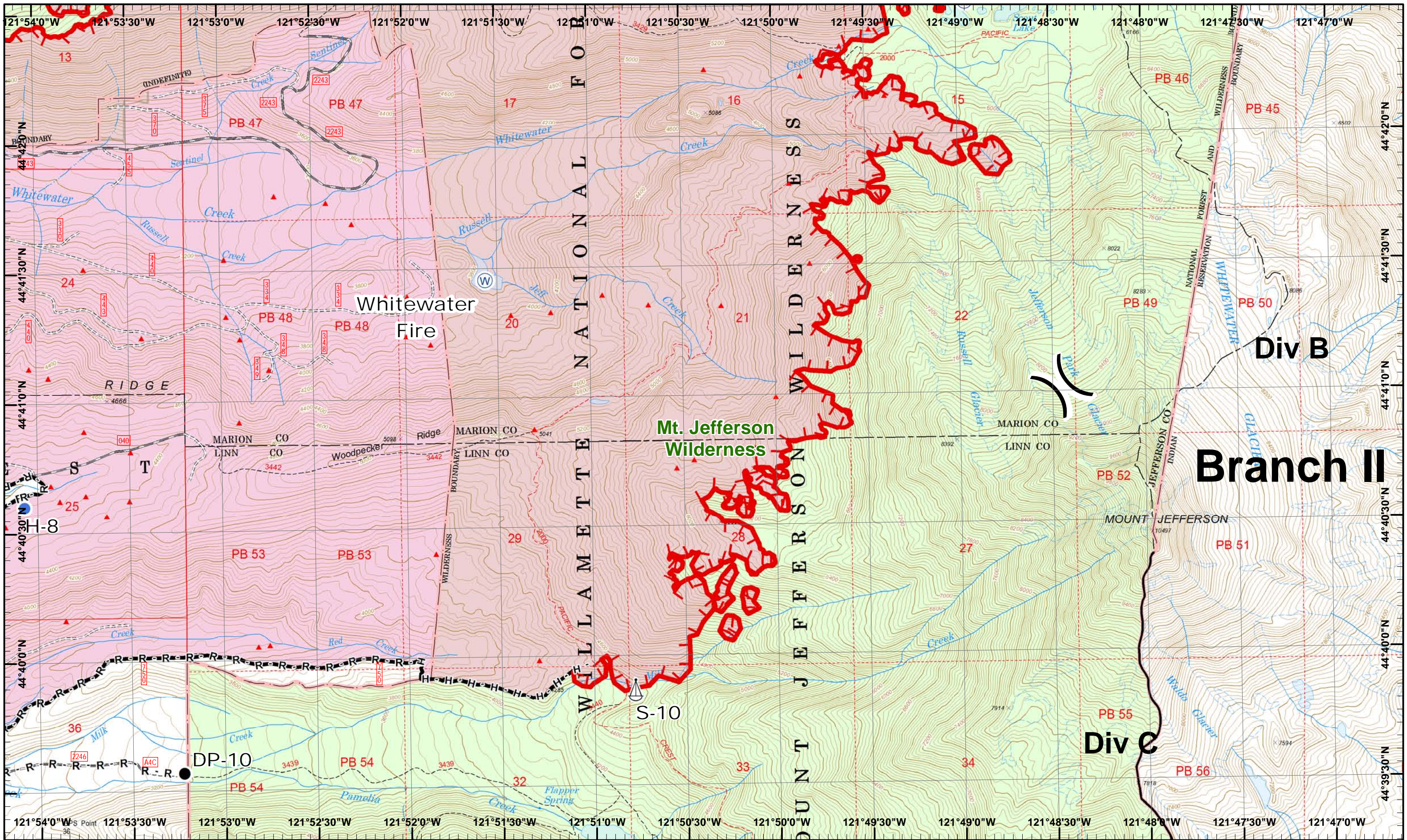


Whitewater Incident
 September 8, 2017

IR © 9/5/2017 1943
 Whitewater Fire - 10,934 Acres
 Little Devil Fire - 1,598 Acres
 French Fire - 2 Acres
 Scorpion Fire - 606 Acres
 Potato Hill Fire - 199 Acres

Map Created 9/7/2017 11:37:02 PM RDC

- North
- Drop Point
- IR Heat Source
- Repeater
- Water Source
- Completed
- Completed Hand
- Helispot
- Lookout
- Uncontrolled Fire
- Completed Dozer
- Road as Line



Whitewater Incident
 September 8, 2017

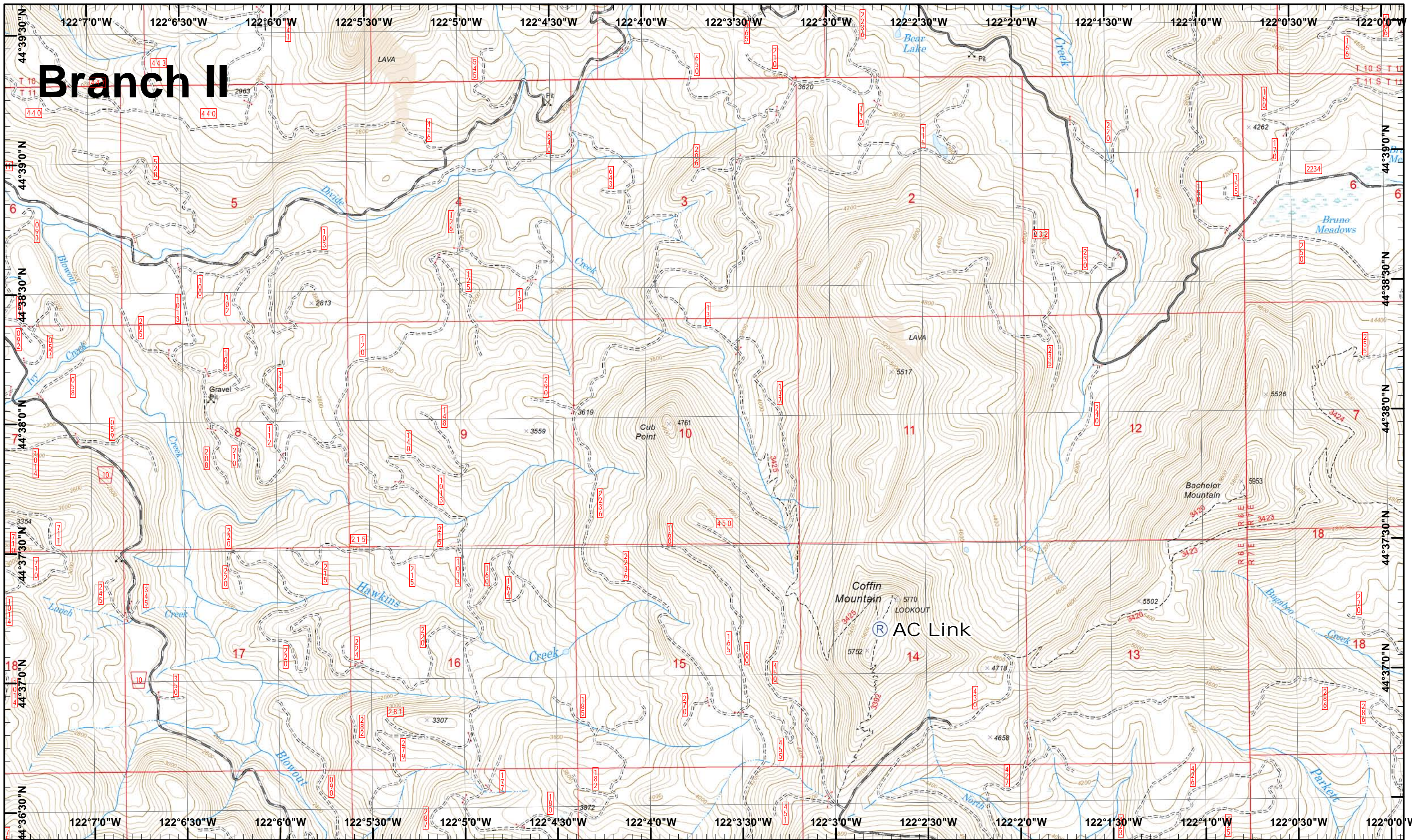
IR © 9/5/2017 1943
 Whitewater Fire - 10,934 Acres
 Little Devil Fire - 1,598 Acres
 French Fire - 2 Acres
 Scorpion Fire - 606 Acres
 Potato Hill Fire - 199 Acres
 Map Created 9/7/2017 11:37:33 PM RDC

- North
- Drop Point
- IR Heat Source
- Sling Site
- Water Source
- Completed
- Uncontrolled Fire
- R - Road as Line
- H - Completed Hand



1	2	3
4	5	6
7	8	9
10	11	12
13	14	15

Branch II



Whitewater Incident
September 8, 2017

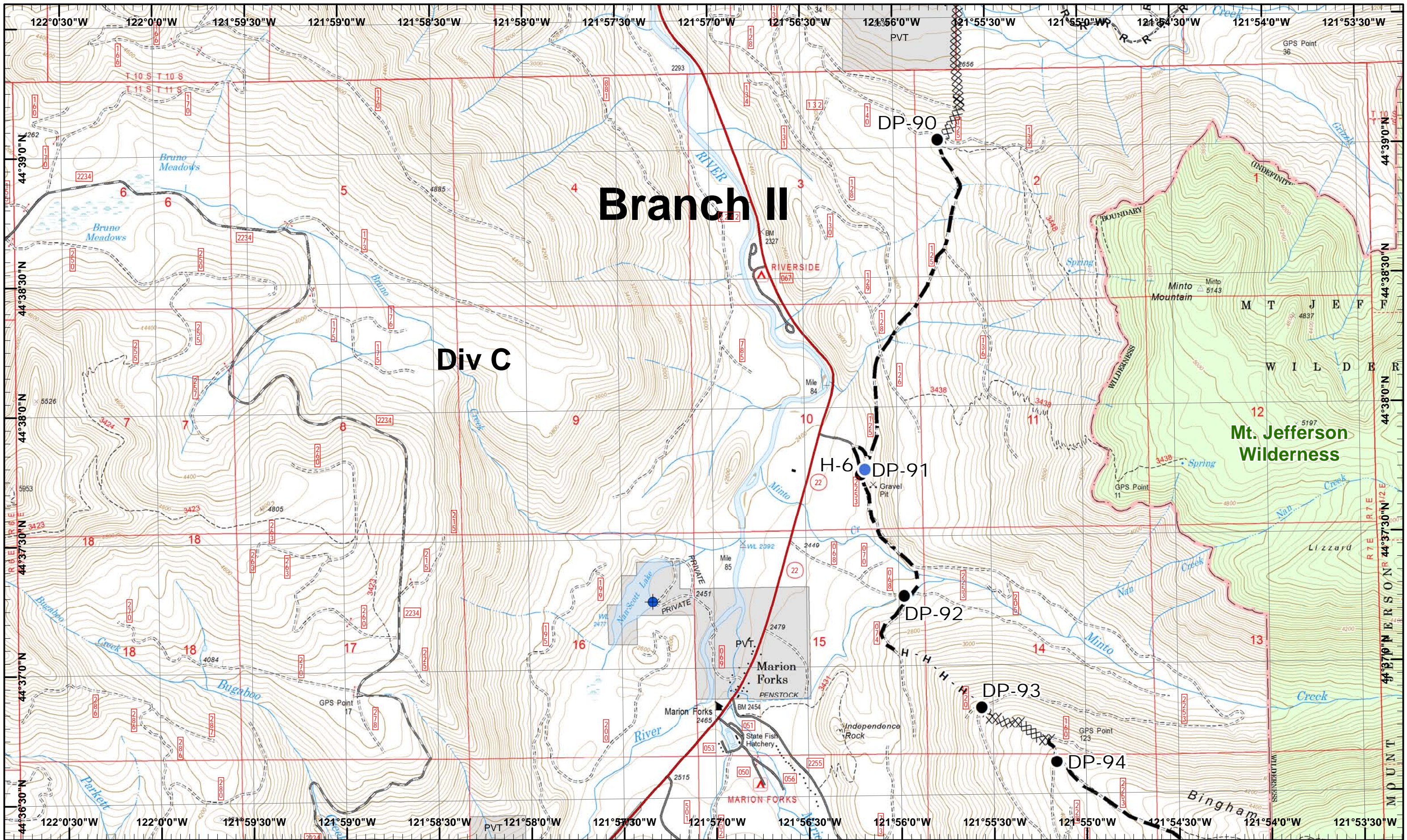
IR © 9/5/2017 1943
Whitewater Fire - 10,934 Acres
Little Devil Fire - 1,598 Acres
French Fire - 2 Acres
Scorpion Fire - 606 Acres
Potato Hill Fire - 199 Acres
Map Created 9/7/2017 11:38:01 PM RDC



1	2	3
4	5	6
7	8	9
10	11	12
13	14	15

Page 13
X Division
I Branch

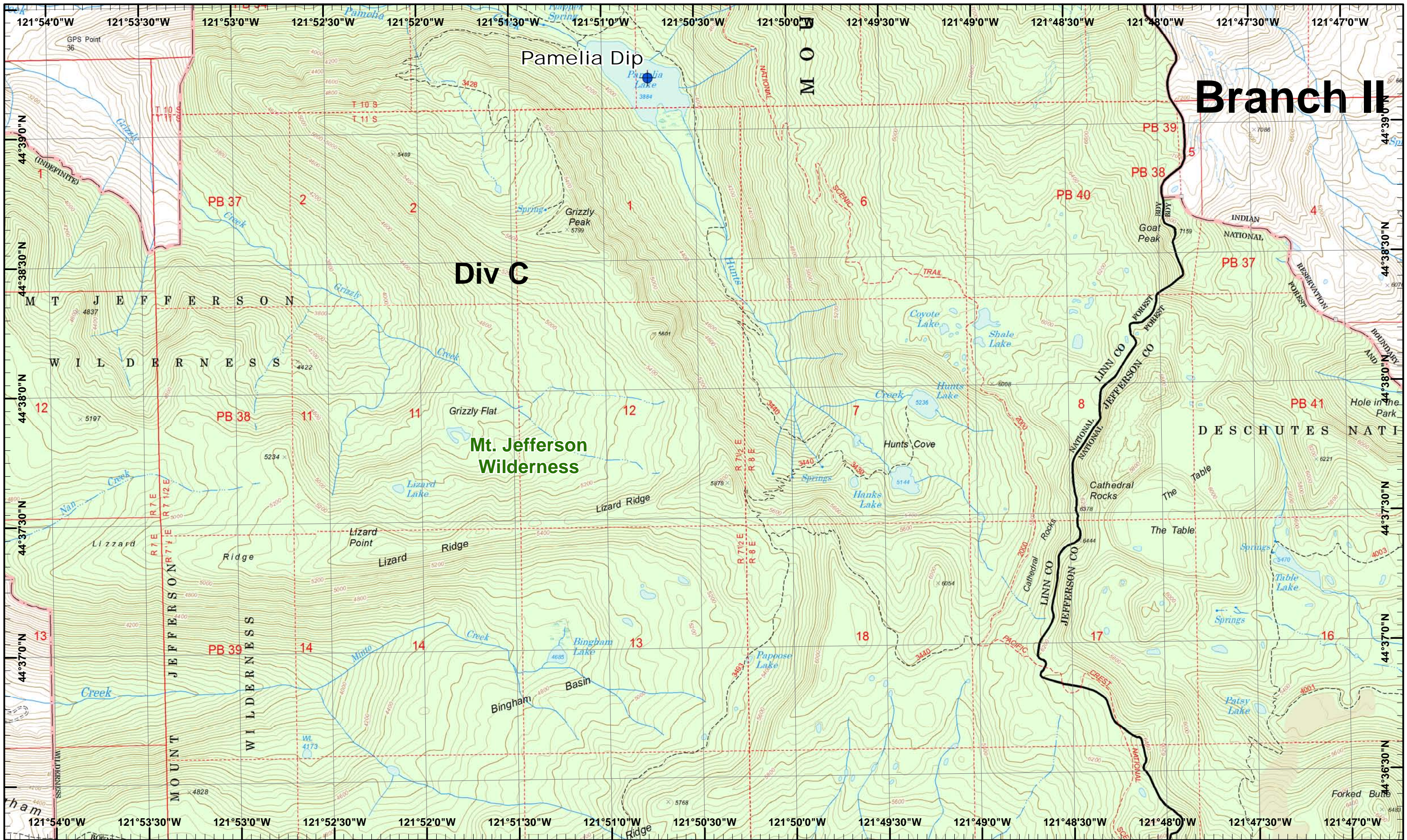




Branch II

Div C

Mt. Jefferson Wilderness



Whitewater Incident
 September 8, 2017

IR @ 9/5/2017 1943
 Whitewater Fire - 10,934 Acres
 Little Devil Fire - 1,598 Acres
 French Fire - 2 Acres
 Scorpion Fire - 606 Acres
 Potato Hill Fire - 199 Acres



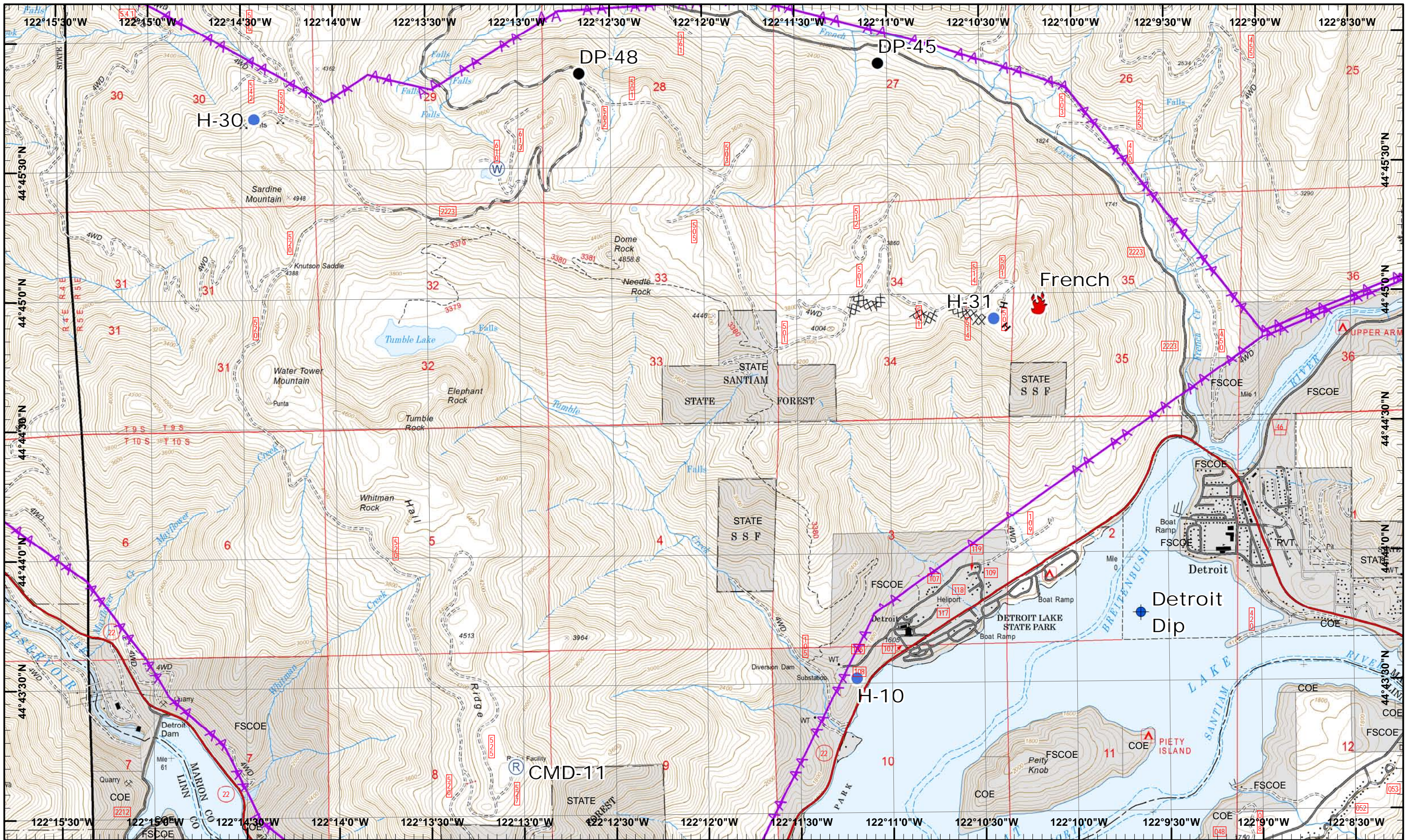
Map Created 9/7/2017 11:38:54 PM RDC



1	2	3
4	5	6
7	8	9
10	11	12
13	14	15

Page 15
)(Division
][Branch





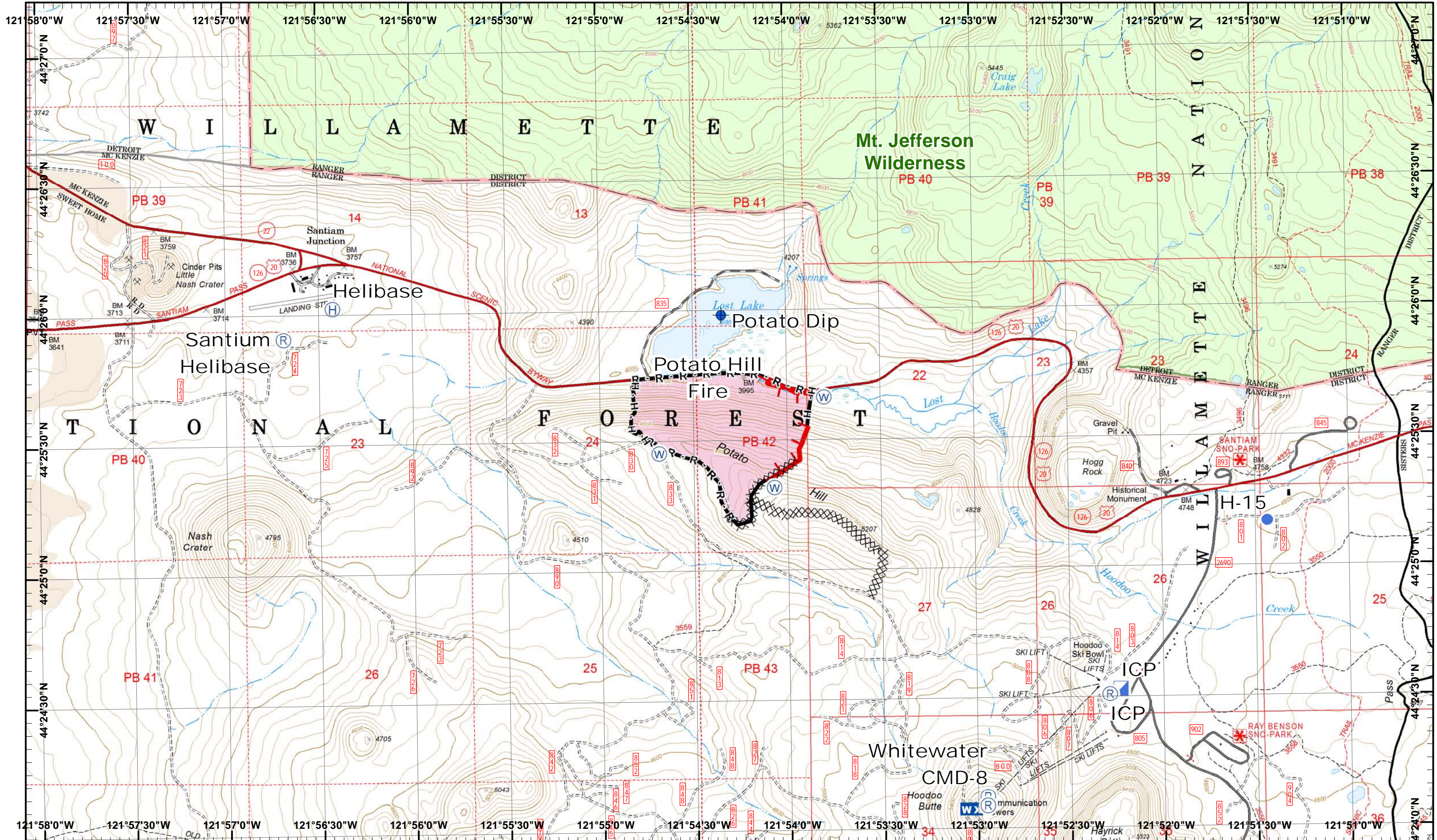
Whitewater Incident
 September 8, 2017

IR © 9/5/2017 1943
 Whitewater Fire - 10,934 Acres
 Little Devil Fire - 1,598 Acres
 French Fire - 2 Acres
 Scorpion Fire - 606 Acres
 Potato Hill Fire - 199 Acres
 Map Created 9/7/2017 11:39:24 PM RDC

Dip Site
 Fire Location
 Helispot
 Repeater
 Water Source
 Completed Dozer
 Powerline
 Drop Point
 Completed Hand



1	2	3
4	5	6
7	8	9
10	11	12
13	14	15



Whitewater Incident
 September 8, 2017

IR © 9/5/2017 1943
 Whitewater Fire - 10,934 Acres
 Little Devil Fire - 1,598 Acres
 French Fire - 2 Acres
 Scorpion Fire - 606 Acres
 Potato Hill Fire - 199 Acres
 Map Created 9/7/2017 11:39:52 PM RDC



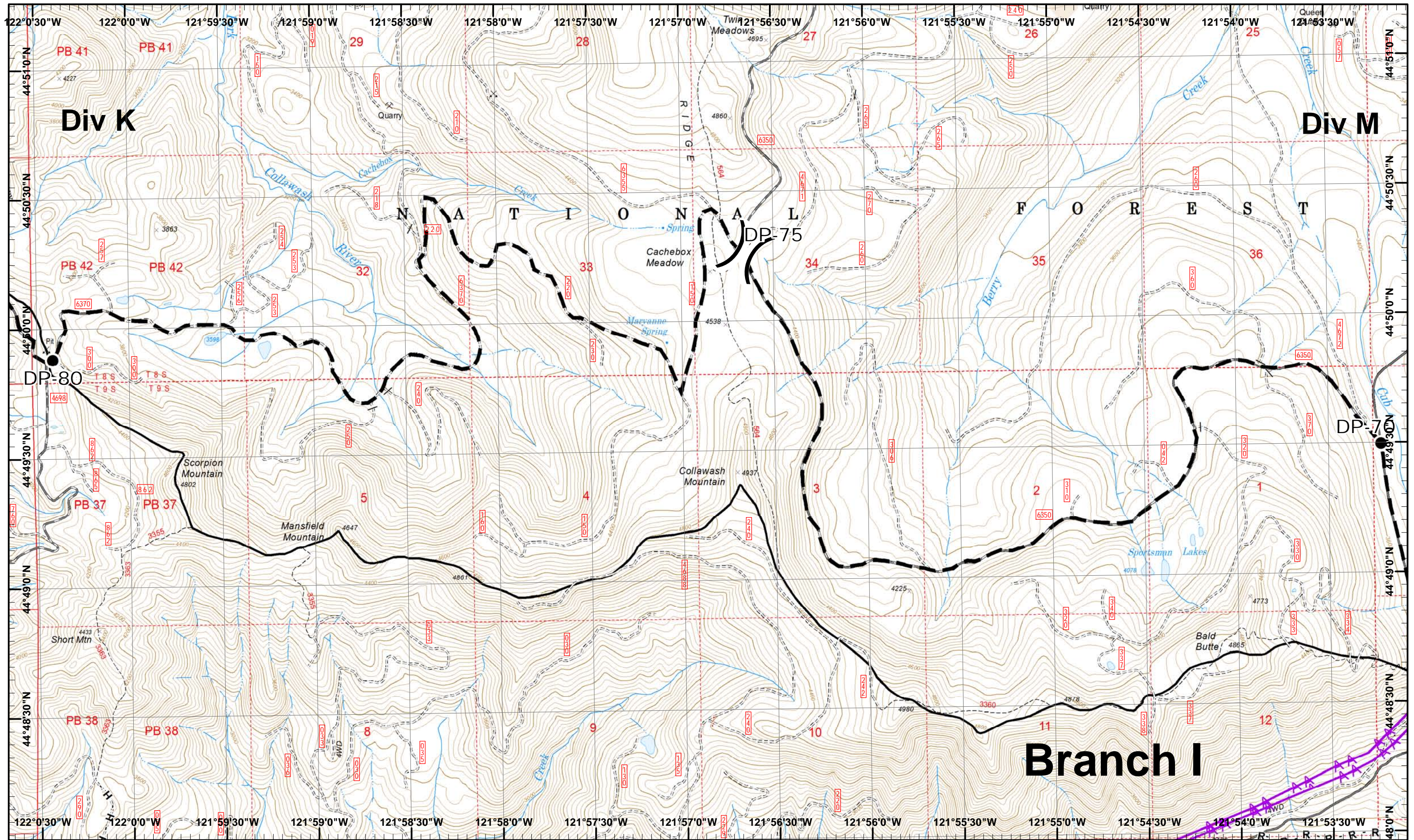
- Dip Site
- H Helibase
- Helispot
- ICP Incident Command Post
- R Repeater
- W Water Source
- WX Mobile Weather
- Uncontrolled Fire



1	2	3
4	5	6
7	8	9
10	11	12
13	14	15






Page 17
) Division
 | Branch





Whitewater Incident
 September 8, 2017

IR © 9/5/2017 1943
 Whitewater Fire - 10,934 Acres
 Little Devil Fire - 1,598 Acres
 French Fire - 2 Acres
 Scorpion Fire - 606 Acres
 Potato Hill Fire - 199 Acres
 Map Created 9/7/2017 11:40:20 PM RDC

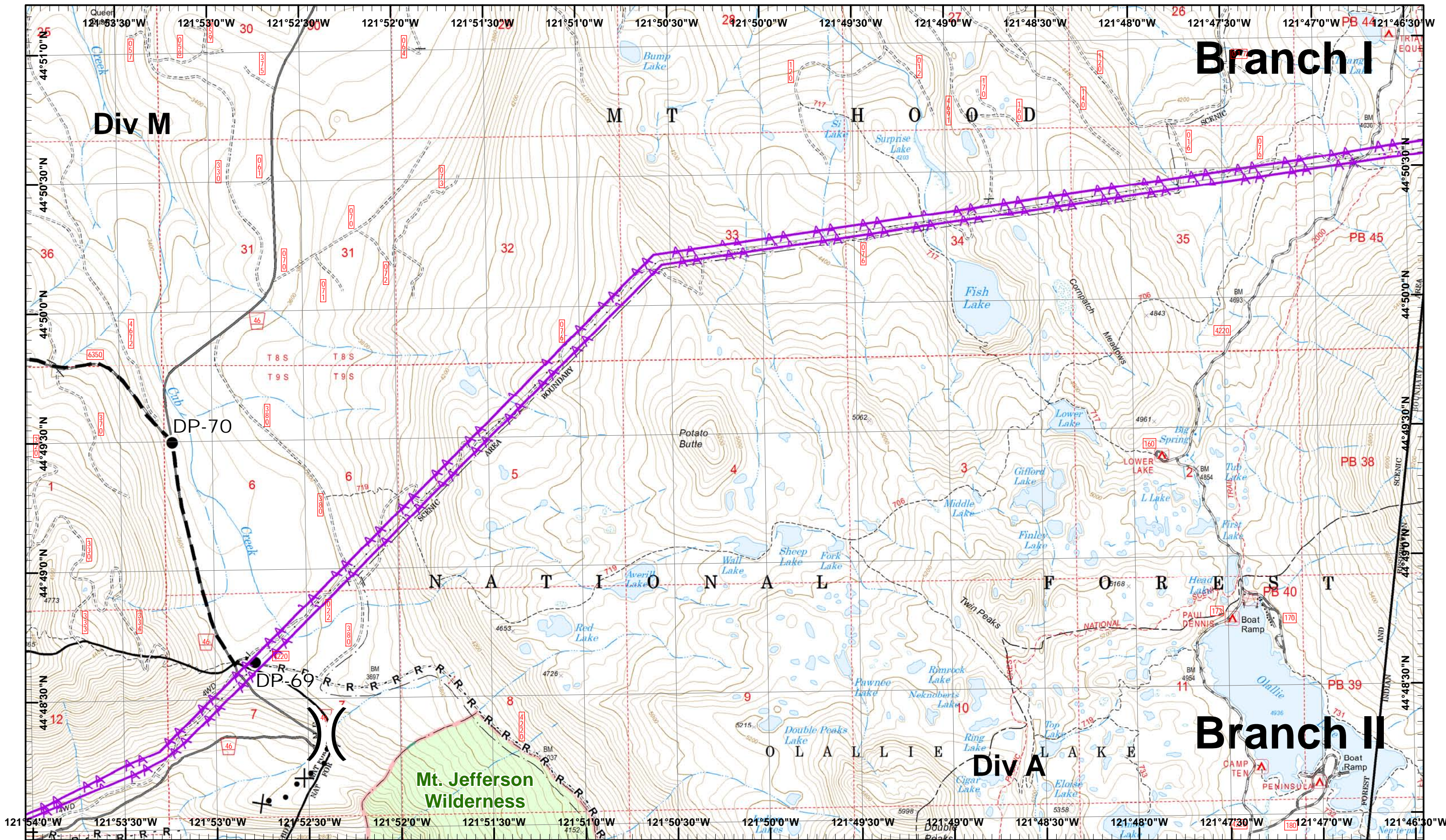
 Drop Point
 R - Road as Line
 Powerline
 H - Completed Hand
 Planned Fire Line



1	2	3
4	5	6
7	8	9
10	11	12
13	14	15

Page 2
 () Division
 [] Branch





Whitewater Incident
 September 8, 2017

IR © 9/5/2017 1943
 Whitewater Fire - 10,934 Acres
 Little Devil Fire - 1,598 Acres
 French Fire - 2 Acres
 Scorpion Fire - 606 Acres
 Potato Hill Fire - 199 Acres
 Map Created 9/7/2017 11:40:51 PM RDC



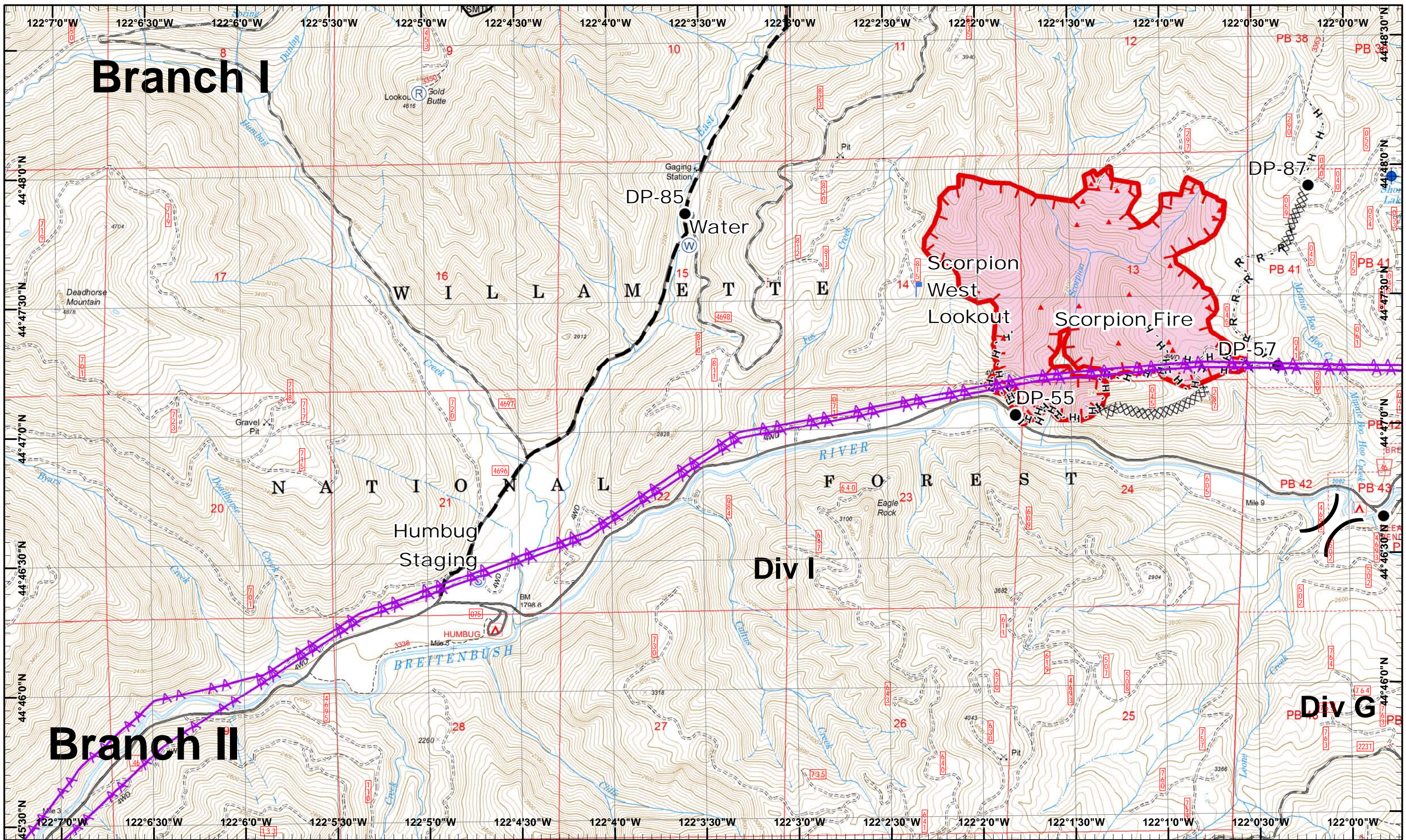
- Drop Point
- R - Road as Line
- ⊗ Proposed Dozer
- ▲ Powerline
- Planned Fire Line
- H - Completed Hand



1	2	3
4	5	6
7	8	9
10	11	12
13	14	15

Page 3
)(Division
 || Branch





Branch I

Branch II

Div I

Div G

Whitewater Incident
 September 8, 2017

IR © 9/5/2017 1943
 Whitewater Fire - 10,934 Acres
 Little Devil Fire - 1,598 Acres
 French Fire - 2 Acres
 Scorpion Fire - 606 Acres
 Potato Hill Fire - 199 Acres
 Map Created 9/7/2017 11:41:22 PM RDC



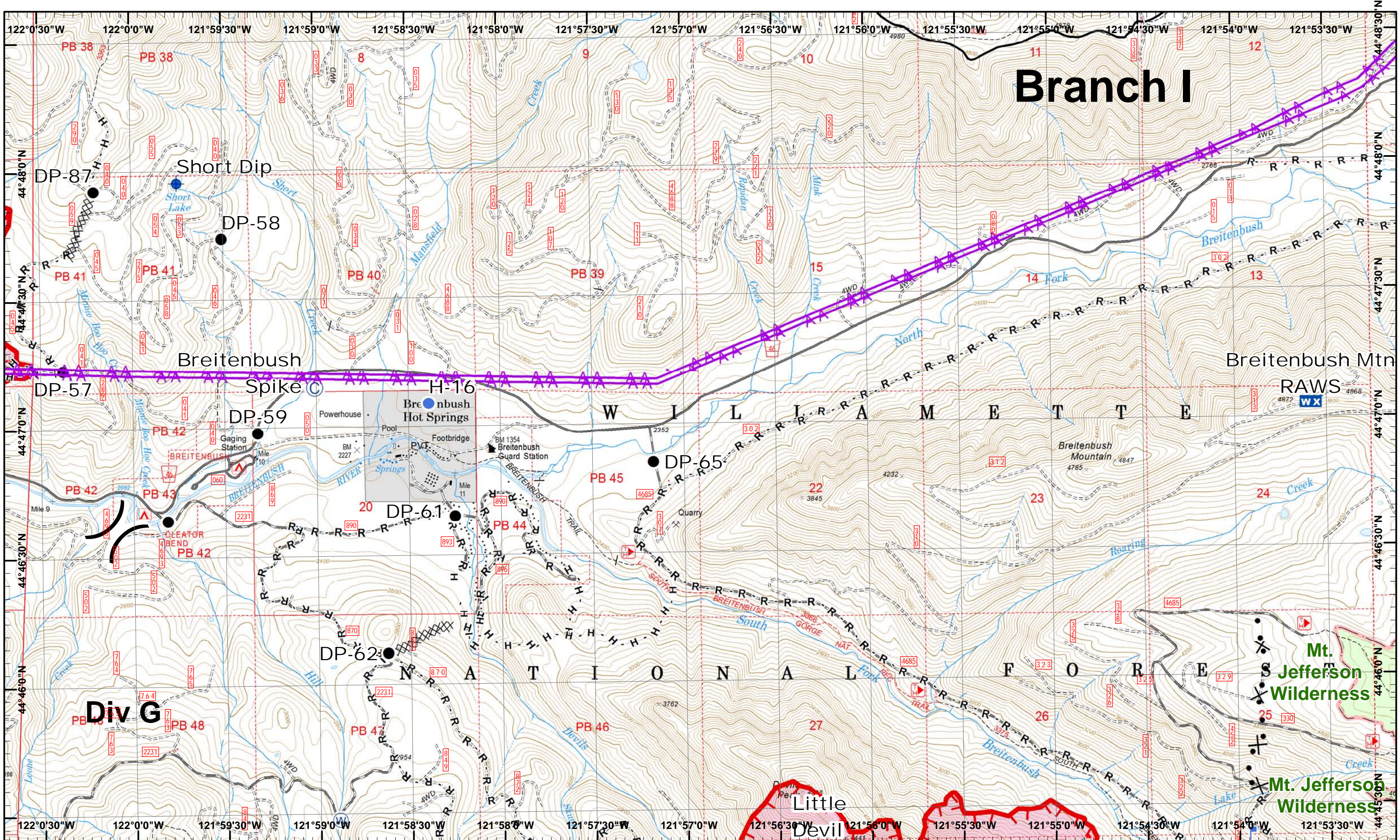
- ▲ Dip Site
- ▲ IR Heat Source
- R Repeater
- S Staging Area
- W Water Source
- XXXX Completed Dozer R - Road as Line
- ▲▲▲▲ Poi
- Drop Point
- └ Lookout
- Uncontrolled Fire
- H Completed Hand
- Planned Fire Line



1	2	3
4	5	6
7	8	9
10	11	12
13	14	15

Page 4
 X Division
 I Branch





Branch I

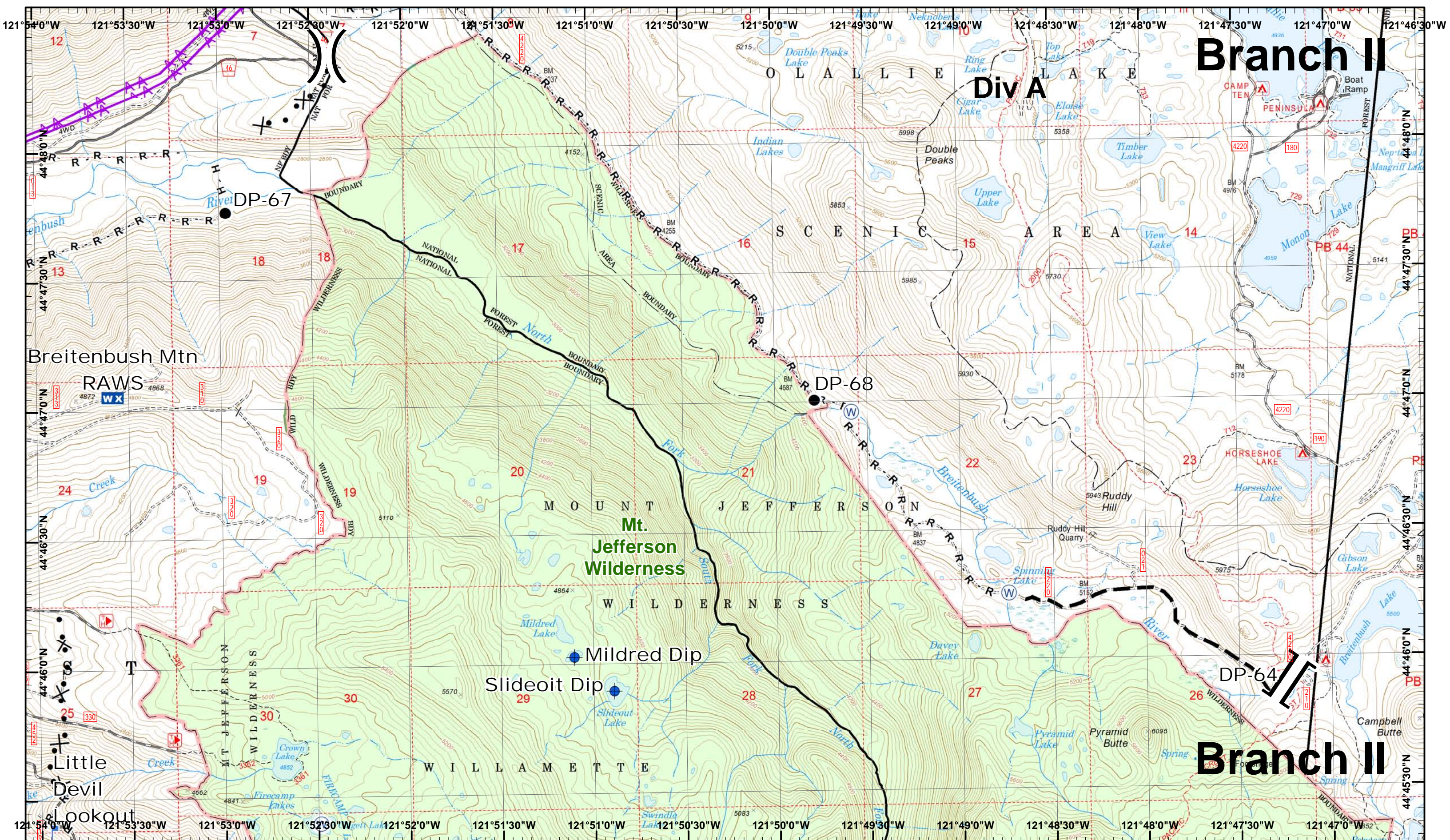
Whitewater Incident
 September 8, 2017

IR © 9/5/2017 1943
 Whitewater Fire - 10,934 Acres
 Little Devil Fire - 1,598 Acres
 French Fire - 2 Acres
 Scorpion Fire - 606 Acres
 Potato Hill Fire - 199 Acres

Map Created 9/7/2017 11:41:58 PM RDC

Camp
 Dip Site
 Helispot
 Lookout
 Water Source
 Completed Dozer R - Road as Line
 Proposed

Drop Point
 IR Heat Source
 Mobile Weather
 Uncontrolled Fire
 Completed Hand
 Powerline



Branch II

Div A

Branch II

Whitewater Incident
 September 8, 2017

IR © 9/5/2017 1943
 Whitewater Fire - 10,934 Acres
 Little Devil Fire - 1,598 Acres
 French Fire - 2 Acres
 Scorpion Fire - 606 Acres
 Potato Hill Fire - 199 Acres
 Map Created 9/7/2017 11:42:33 PM RDC

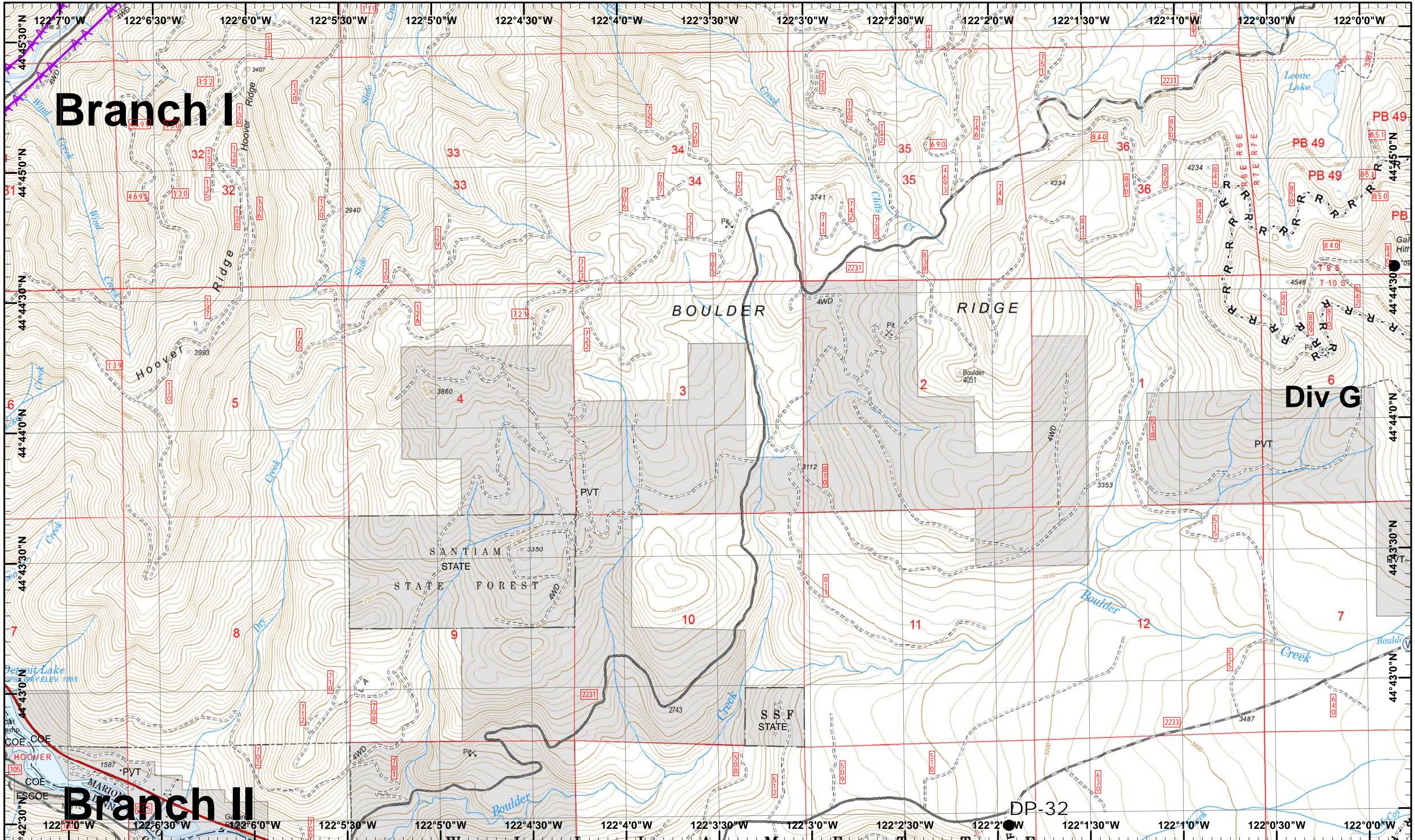
- North
- Dip Site
- Lookout
- Water Source
- Road as Line
- Proposed Dozer
- Powerline
- Drop Point
- Mobile Weather
- Completed Hand
- Planned Fire Line



1	2	3
4	5	6
7	8	9
10	11	12
13	14	15

Page 6
)(Division
 [] Branch





Branch I

Div G

Branch II

Whitewater Incident
 September 8, 2017

IR © 9/5/2017 1943
 Whitewater Fire - 10,934 Acres
 Little Devil Fire - 1,598 Acres
 French Fire - 2 Acres
 Scorpion Fire - 606 Acres
 Potato Hill Fire - 199 Acres

Map Created 9/7/2017 11:43:02 PM RDC

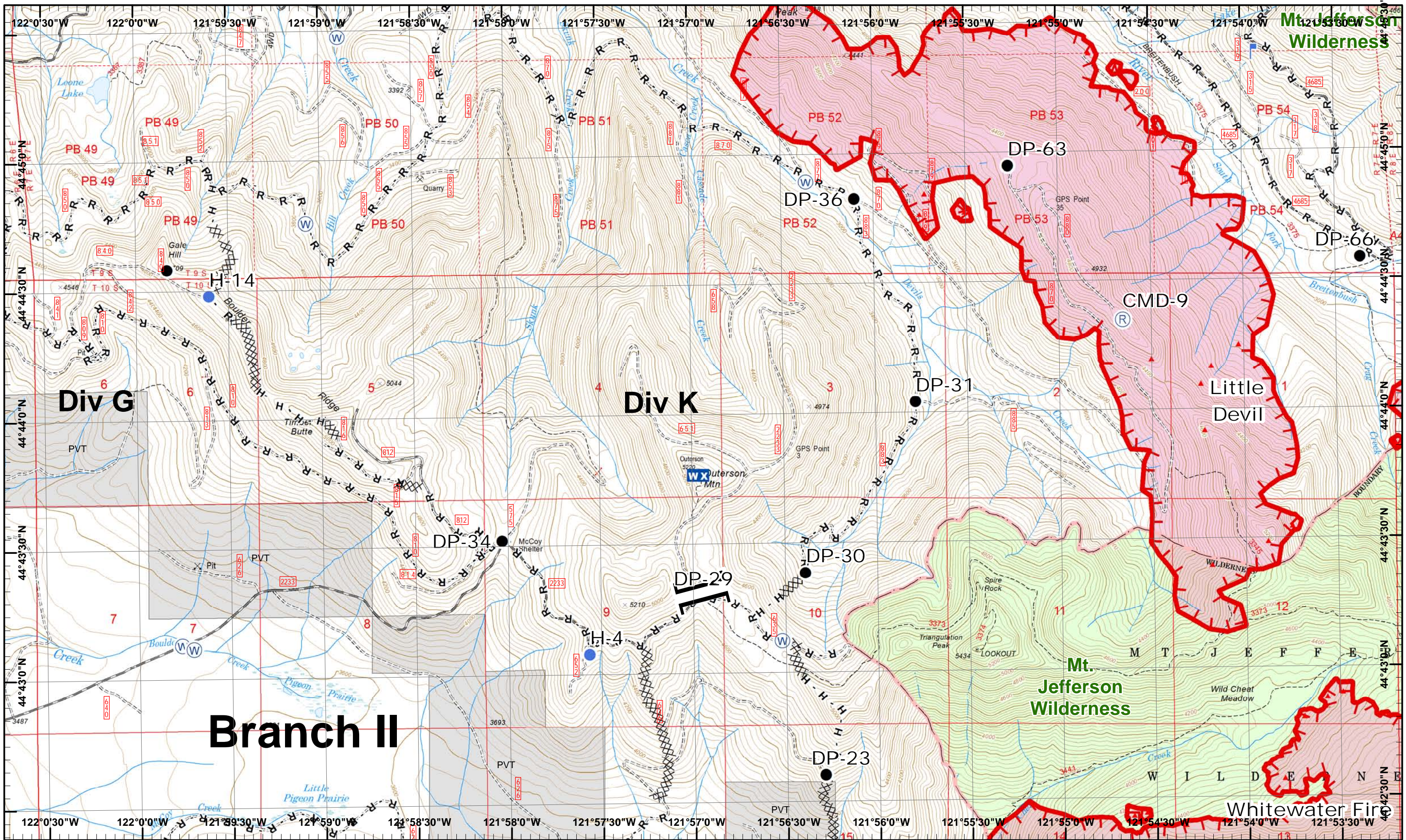
Drop Point Water Source R - Road as Line Powerline



1	2	3
4	5	6
7	8	9
10	11	12
13	14	15

Page 7
)(Division
 || Branch





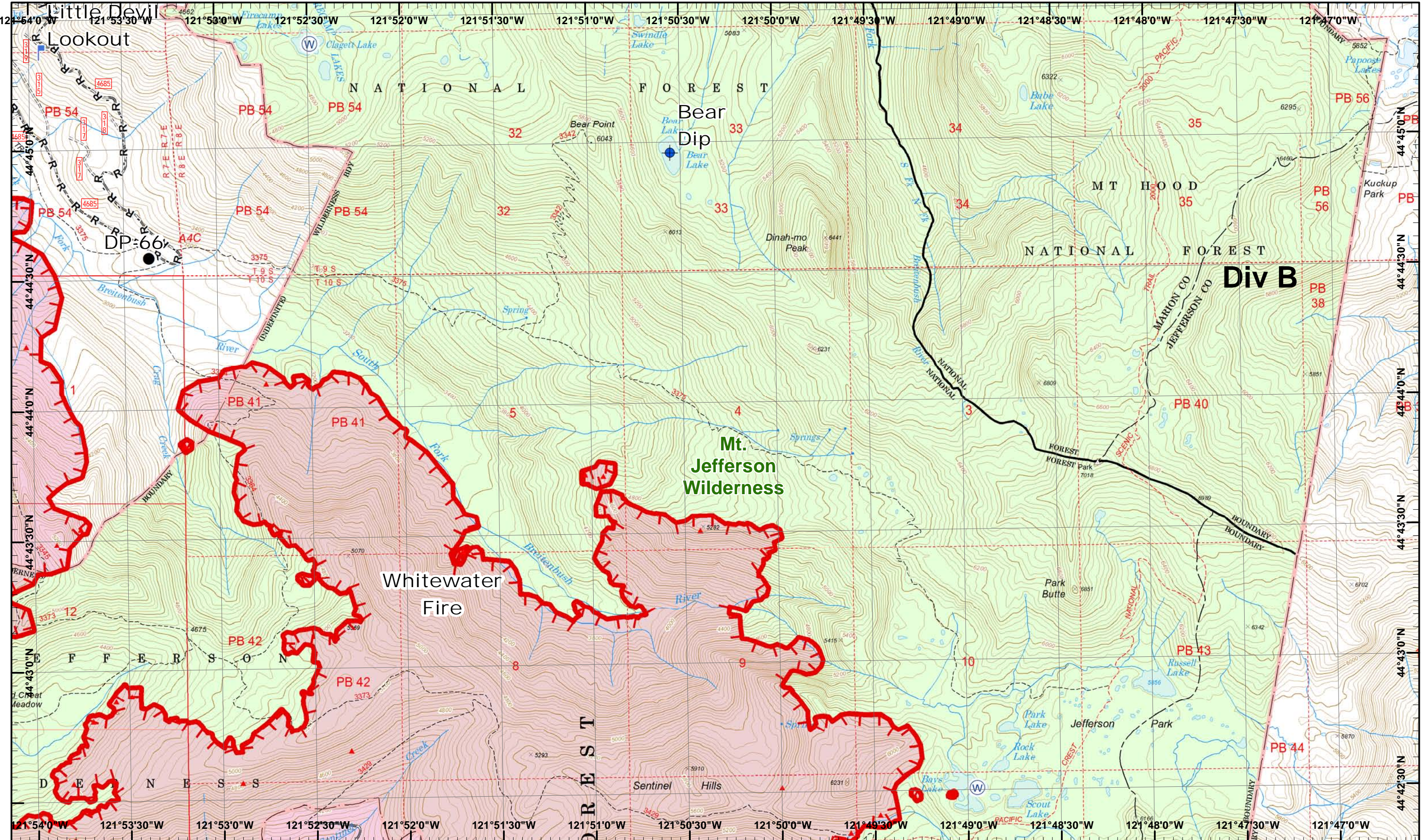
Whitewater Incident
 September 8, 2017

IR © 9/5/2017 1943
 Whitewater Fire - 10,934 Acres
 Little Devil Fire - 1,598 Acres
 French Fire - 2 Acres
 Scorpion Fire - 606 Acres
 Potato Hill Fire - 199 Acres
 Map Created 9/7/2017 11:43:38 PM RDC

- Drop Point
- IR Heat Source
- Mobile Weather
- Water Source
- Completed Dozer R - Road as Line
- Helispot
- Lookout
- Repeater
- Uncontrolled Fire
- Completed Hand



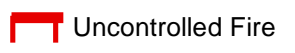
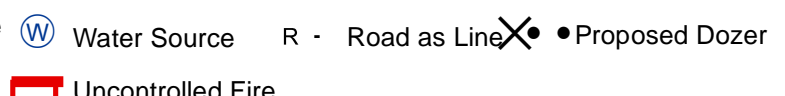
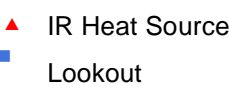
1	2	3
4	5	6
7	8	9
10	11	12
13	14	15



Whitewater Incident
 September 8, 2017

IR © 9/5/2017 1943
 Whitewater Fire - 10,934 Acres
 Little Devil Fire - 1,598 Acres
 French Fire - 2 Acres
 Scorpion Fire - 606 Acres
 Potato Hill Fire - 199 Acres

Map Created 9/7/2017 11:44:09 PM RDC



1	2	3
4	5	6
7	8	9
10	11	12
13	14	15

Page 9
)(Division
)(Branch

