

# Whitewater, Little Devil, Scorpion, French & Potato Hill Fires IAP

September 9, 2017

Acres:

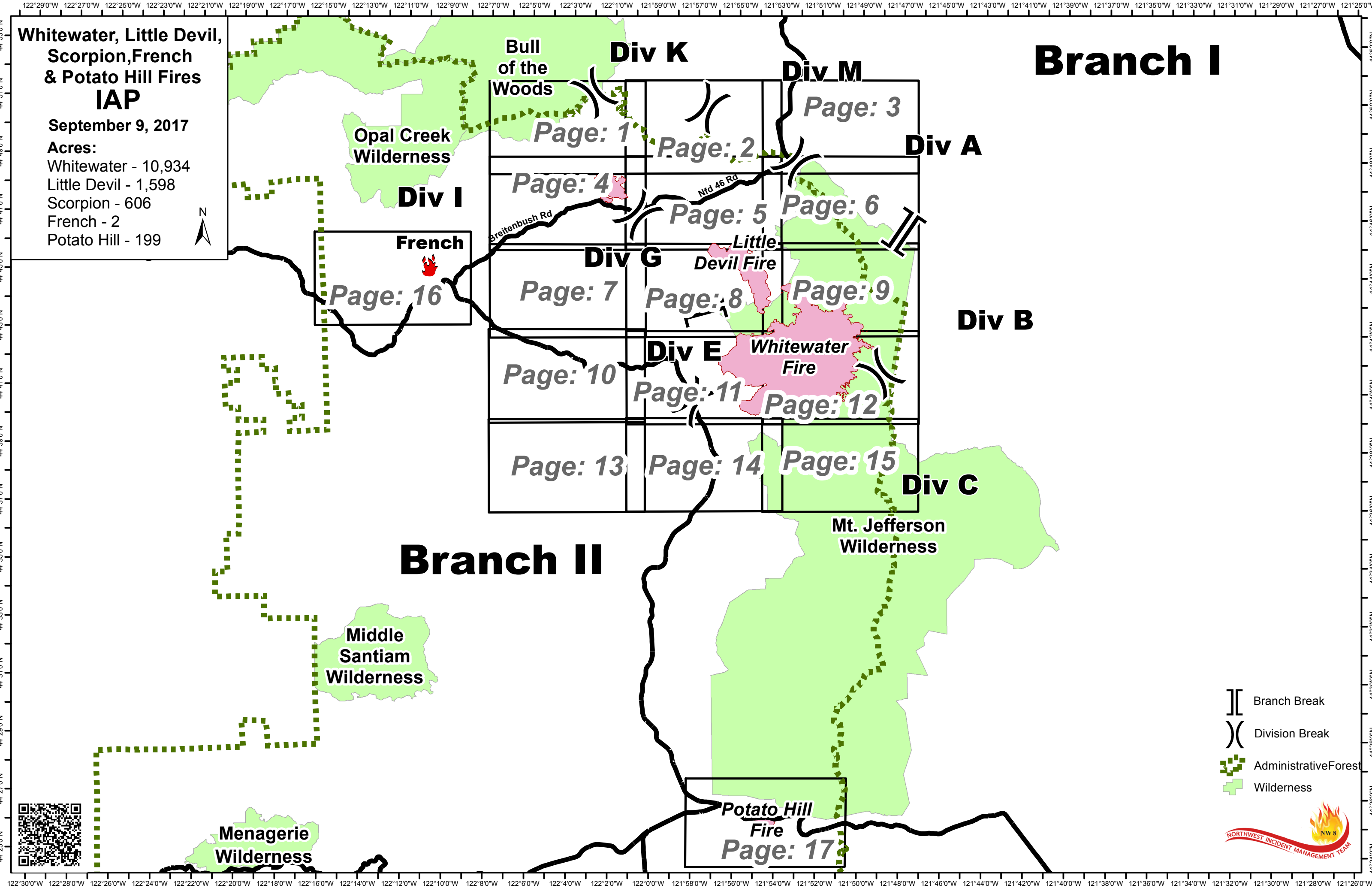
Whitewater - 10,934

Little Devil - 1,598

Scorpion - 606

French - 2

Potato Hill - 199



**French**  
Page: 16

**Div K**  
Page: 1

**Div M**  
Page: 2

**Page: 3**

**Div A**

**Page: 4**

**Page: 5**

**Page: 6**

**Div G**

**Little Devil Fire**

**Page: 7**

**Page: 8**

**Page: 9**

**Div B**

**Page: 10**

**Div E**

**Whitewater Fire**

**Page: 11**

**Page: 12**

**Page: 13**

**Page: 14**

**Page: 15**

**Div C**

**Branch II**

**Middle Santiam Wilderness**

**Mt. Jefferson Wilderness**

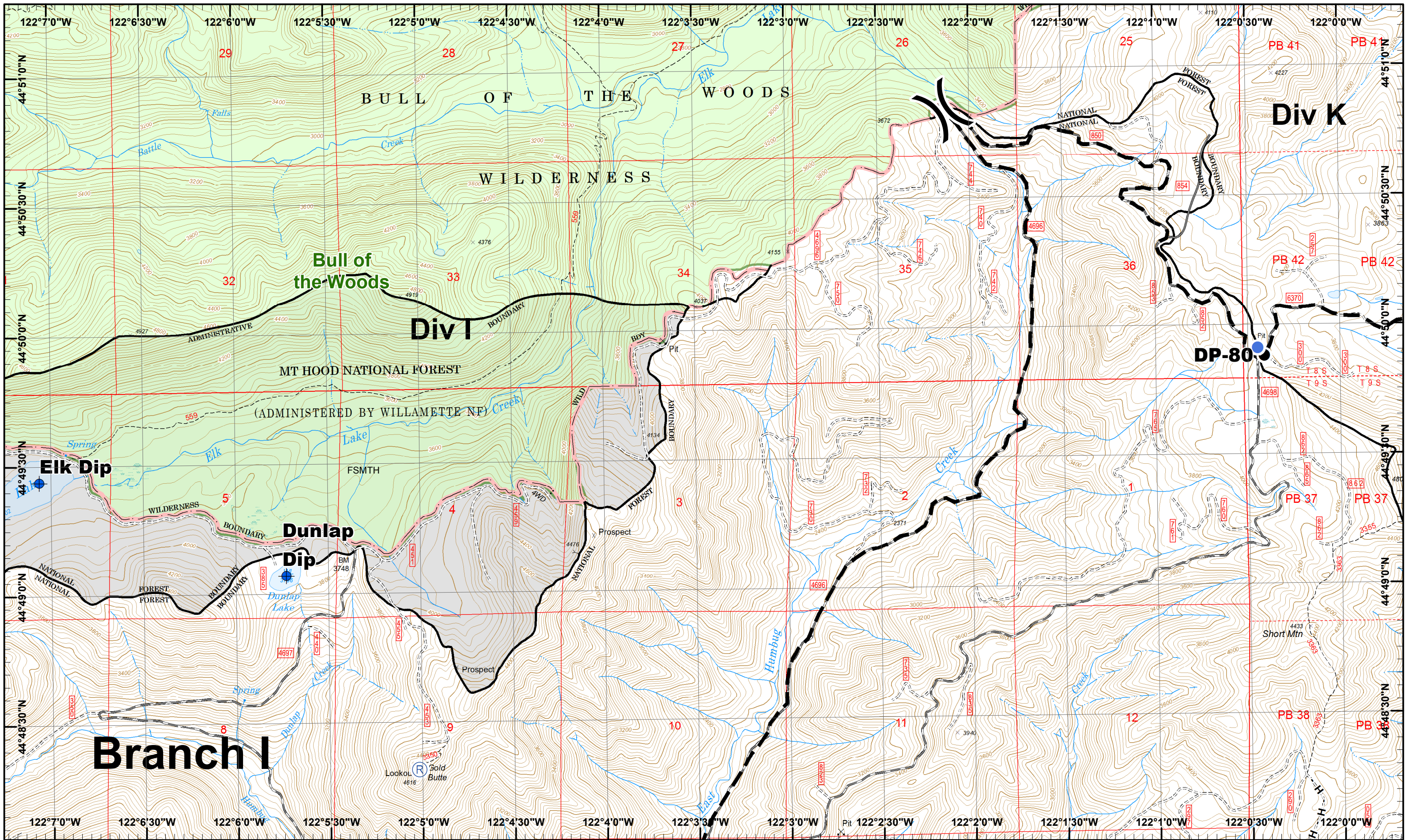
**Menagerie Wilderness**

**Potato Hill Fire**  
Page: 17

- Branch Break
- Division Break
- Administrative Forest
- Wilderness







**Whitewater Incident**  
 September 8, 2017

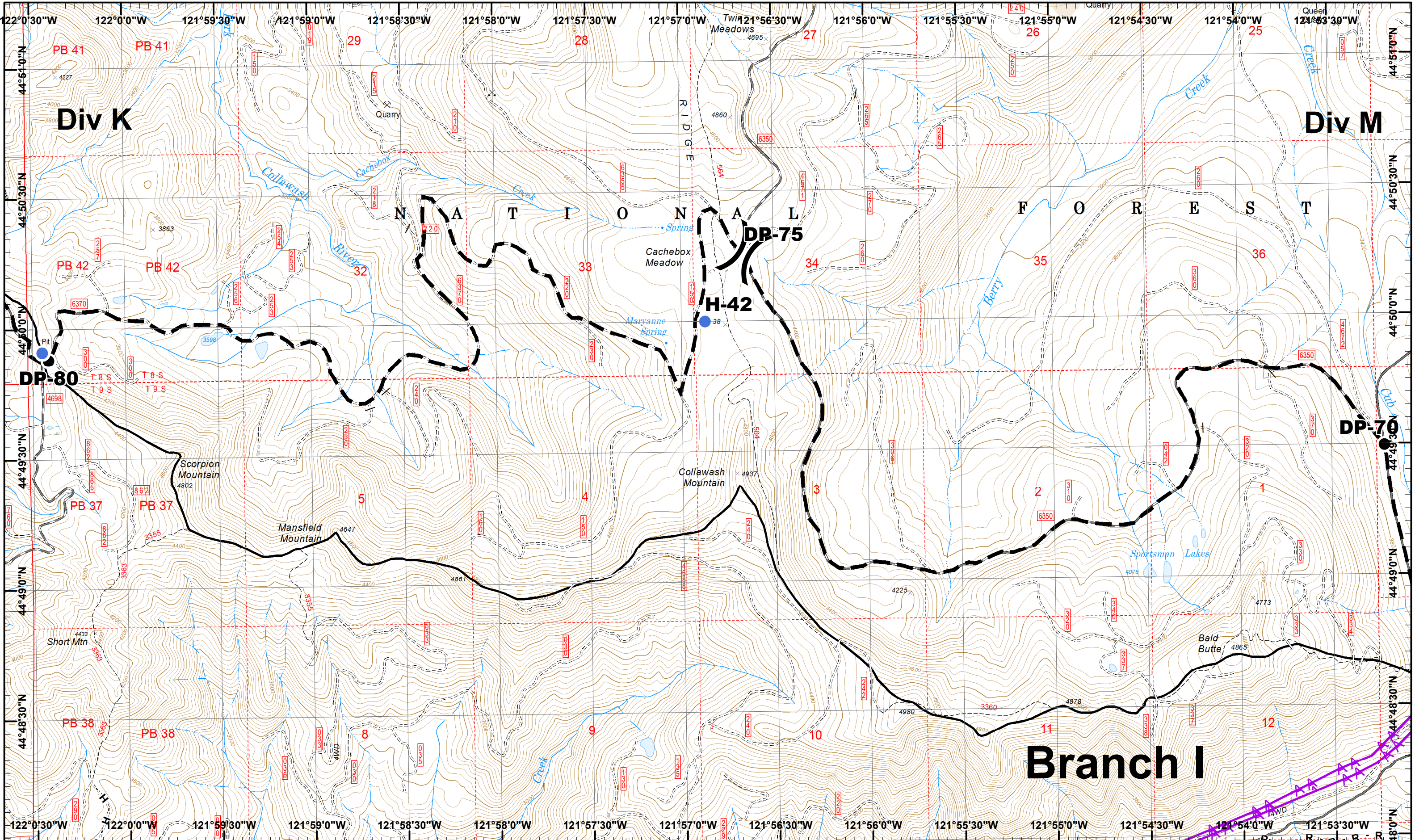
IR @ 9/5/2017 1943  
 Whitewater Fire - 10,934 Acres  
 Little Devil Fire - 1,598 Acres  
 French Fire - 2 Acres  
 Scorpion Fire - 606 Acres  
 Potato Hill Fire - 199 Acres  
 Map Created 9/8/2017 10:00:55 PM RDC

Dip Site  
 Helispot  
 Repeater  
 Planned Fire Line  
 Drop Point  
 Completed Hand









1	2	3
4	5	6
7	8	9
10	11	12
13	14	15





**Whitewater Incident**  
 September 8, 2017

IR © 9/5/2017 1943  
 Whitewater Fire - 10,934 Acres  
 Little Devil Fire - 1,598 Acres  
 French Fire - 2 Acres  
 Scorpion Fire - 606 Acres  
 Potato Hill Fire - 199 Acres  
 Map Created 9/8/2017 10:04:52 PM RDC

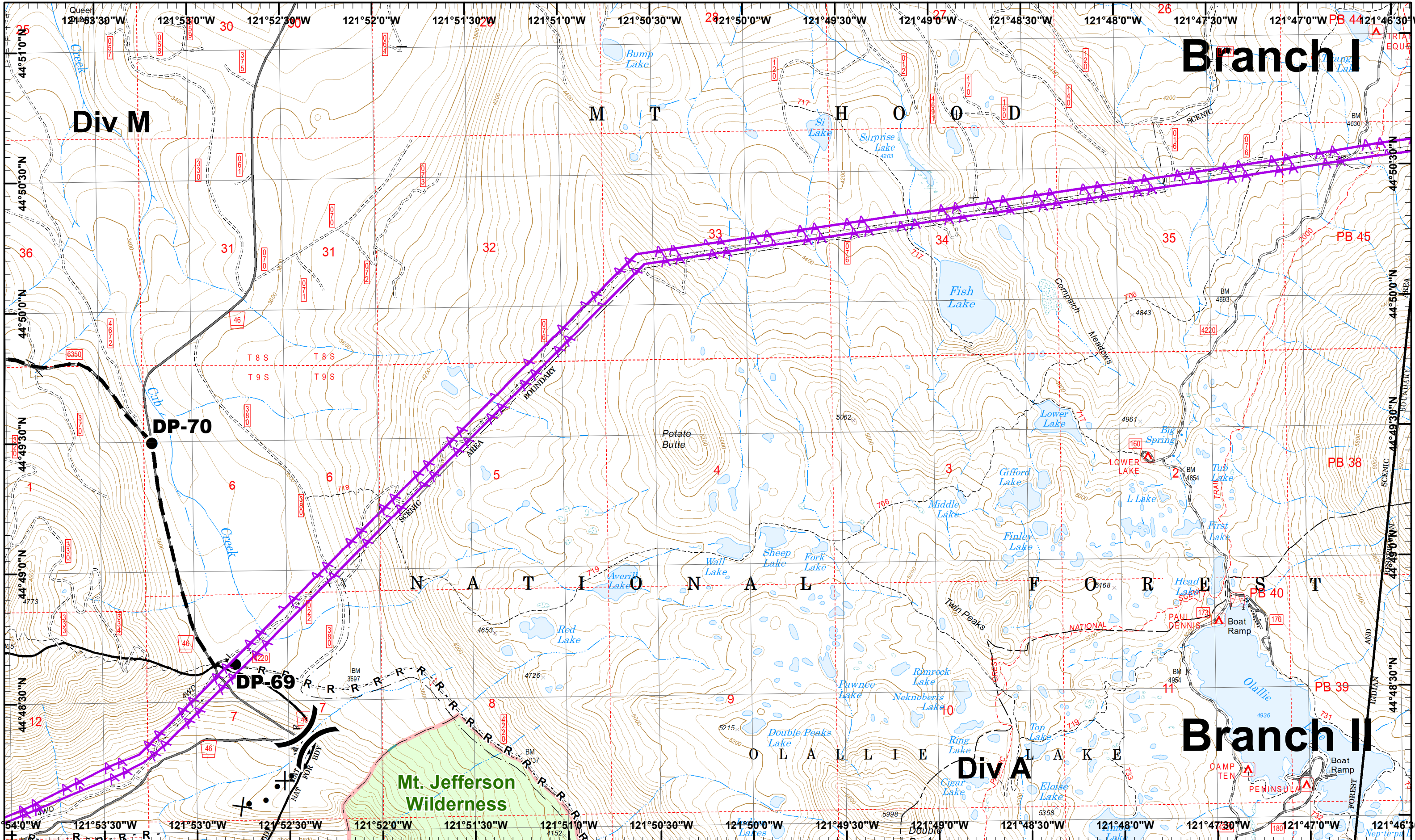

 Drop Point H · Completed Hand  Planned Fire Line  
 Helispot  Road as Line  Powerline



1	2	3
4	5	6
7	8	9
10	11	12
13	14	15




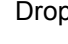
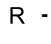







**Whitewater Incident**  
 September 8, 2017

IR @ 9/5/2017 1943  
 Whitewater Fire - 10,934 Acres  
 Little Devil Fire - 1,598 Acres  
 French Fire - 2 Acres  
 Scorpion Fire - 606 Acres  
 Potato Hill Fire - 199 Acres

Map Created 9/8/2017 10:05:20 PM RDC


 Drop Point  
 R - Road as Line  
 X • Proposed Dozer  
 Powerline  
 Planned Fire Line

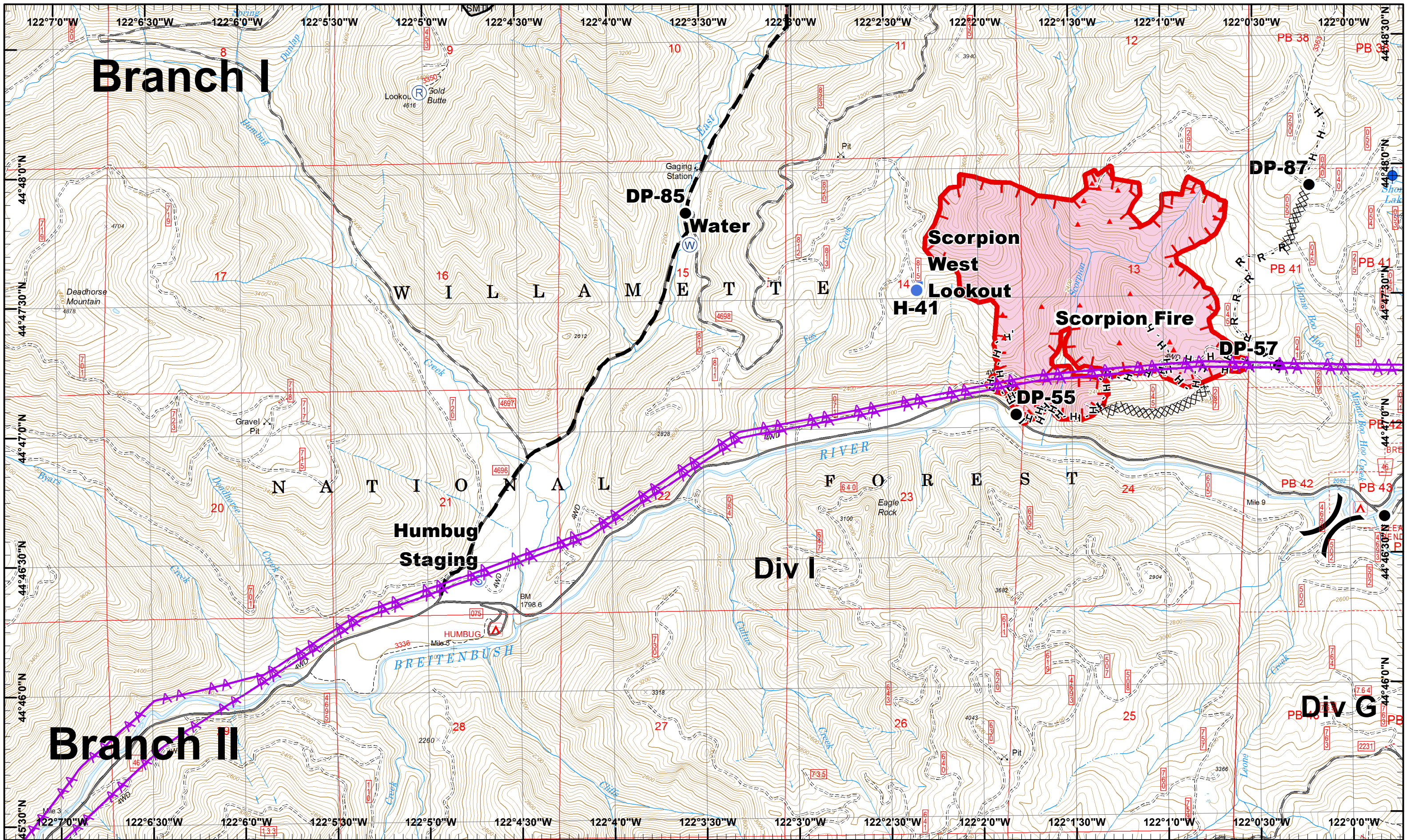


1	2	3
4	5	6
7	8	9
10	11	12
13	14	15

Page 3  
 (X) Division  
 (I) Branch







**Whitewater Incident**  
 September 8, 2017

IR © 9/5/2017 1943  
 Whitewater Fire - 10,934 Acres  
 Little Devil Fire - 1,598 Acres  
 French Fire - 2 Acres  
 Scorpion Fire - 606 Acres  
 Potato Hill Fire - 199 Acres

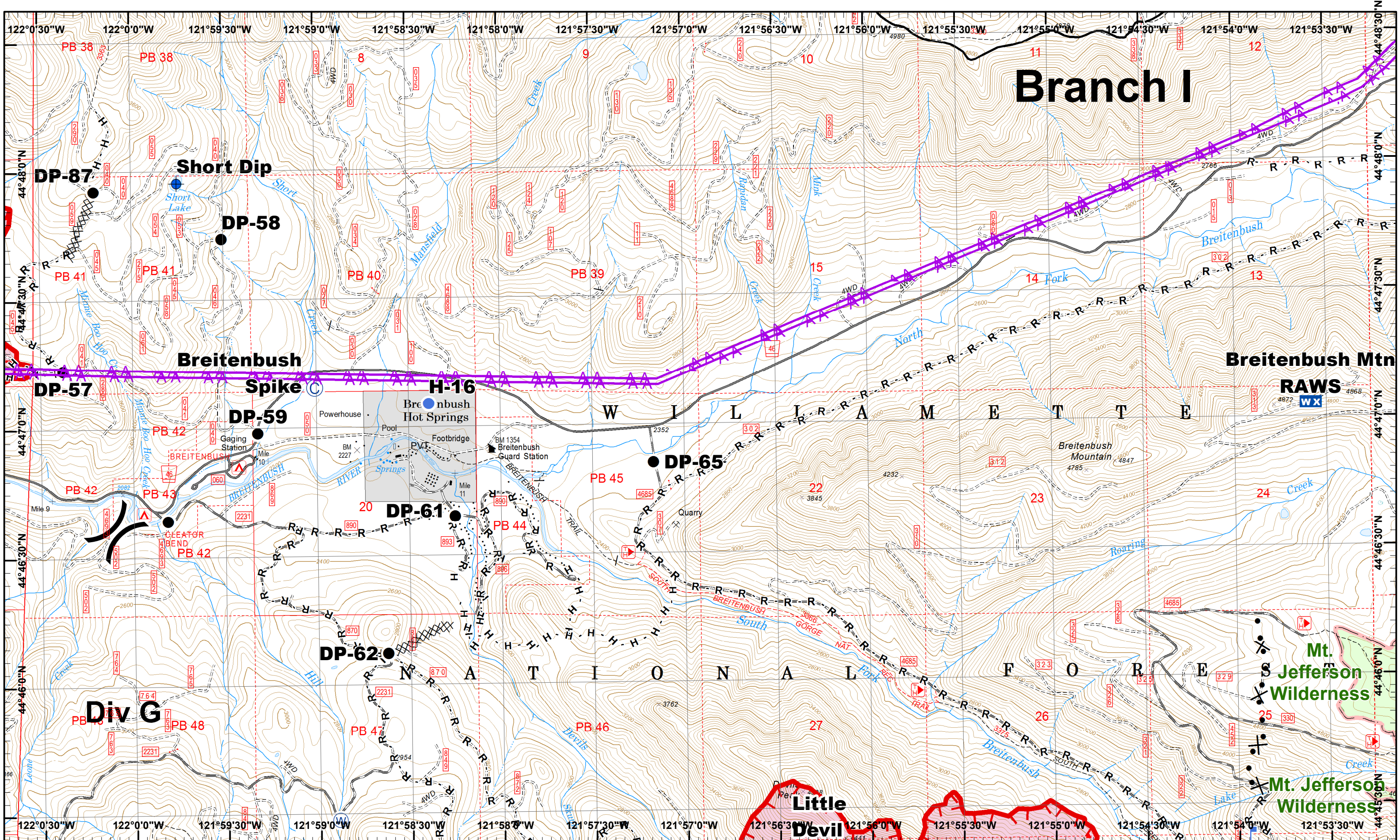
Map Created 9/8/2017 10:05:48 PM RDC

Dip Site Helispot Lookout Repeater Staging Area Water Source Completed Dozer R - Road as Line Pc  
 Drop Point IR Heat Source Uncontrolled Fire Completed Hand Planned Fire Line

1	2	3
4	5	6
7	8	9
10	11	12
13	14	15

Page 4  
 (X) Division  
 (I) Branch





# Branch I

**Whitewater Incident**  
 September 8, 2017

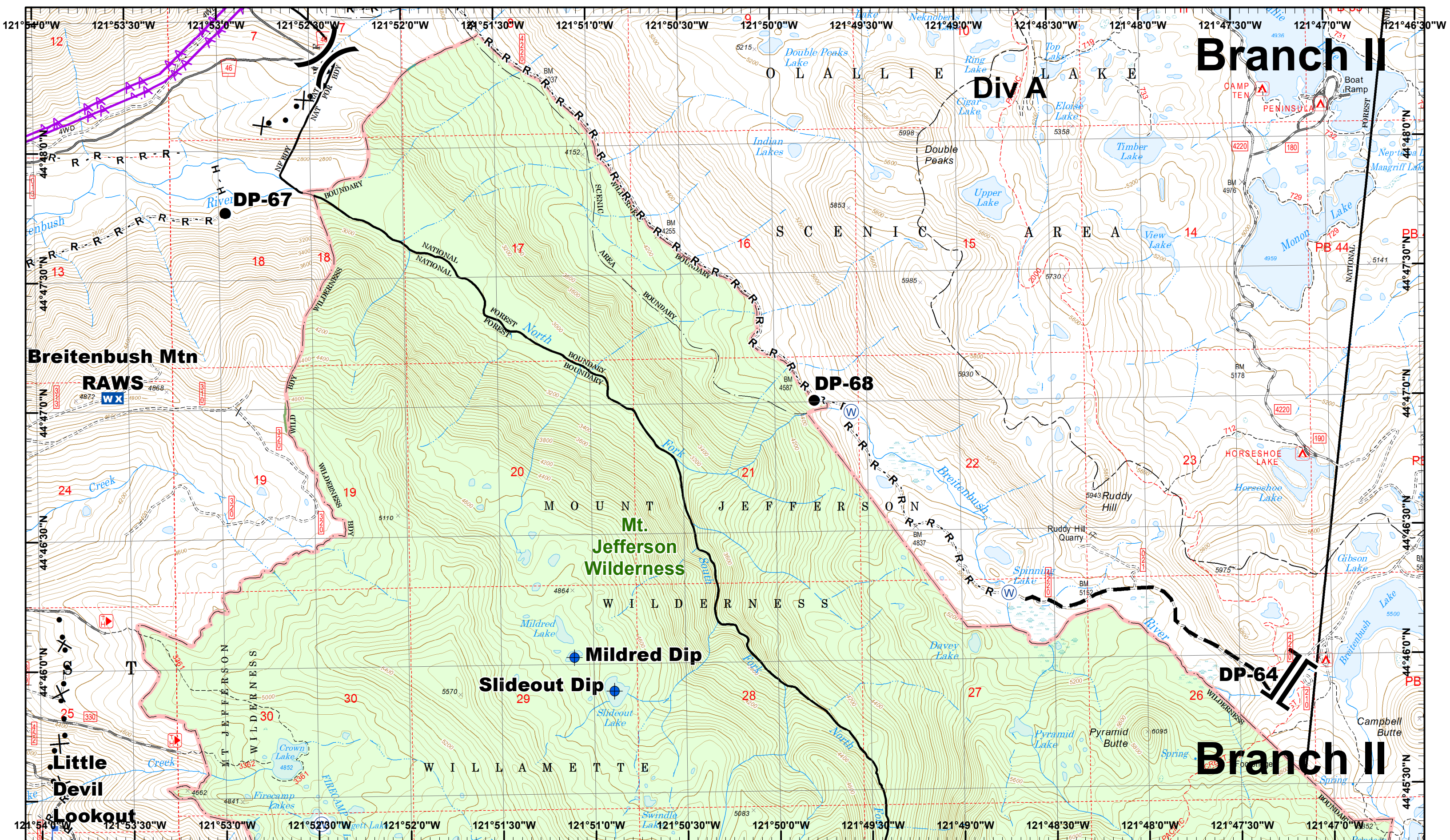
IR @ 9/5/2017 1943  
 Whitewater Fire - 10,934 Acres  
 Little Devil Fire - 1,598 Acres  
 French Fire - 2 Acres  
 Scorpion Fire - 606 Acres  
 Potato Hill Fire - 199 Acres  
 Map Created 9/8/2017 10:06:20 PM RDC

Camp
 Dip Site
 Helispot
 Lookout
 Water Source
 Completed Dozer
 Road as Line
 Proposed

Drop Point
 IR Heat Source
 Mobile Weather
 Uncontrolled Fire
 Completed Hand
 Powerline







**Whitewater Incident**  
 September 8, 2017

IR @ 9/5/2017 1943  
 Whitewater Fire - 10,934 Acres  
 Little Devil Fire - 1,598 Acres  
 French Fire - 2 Acres  
 Scorpion Fire - 606 Acres  
 Potato Hill Fire - 199 Acres  
 Map Created 9/8/2017 10:06:52 PM RDC

- North
- Dip Site
- Lookout
- Water Source
- R - Road as Line
- Proposed Dozer
- Powerline
- Drop Point
- Mobile Weather
- Completed Hand
- Planned Fire Line

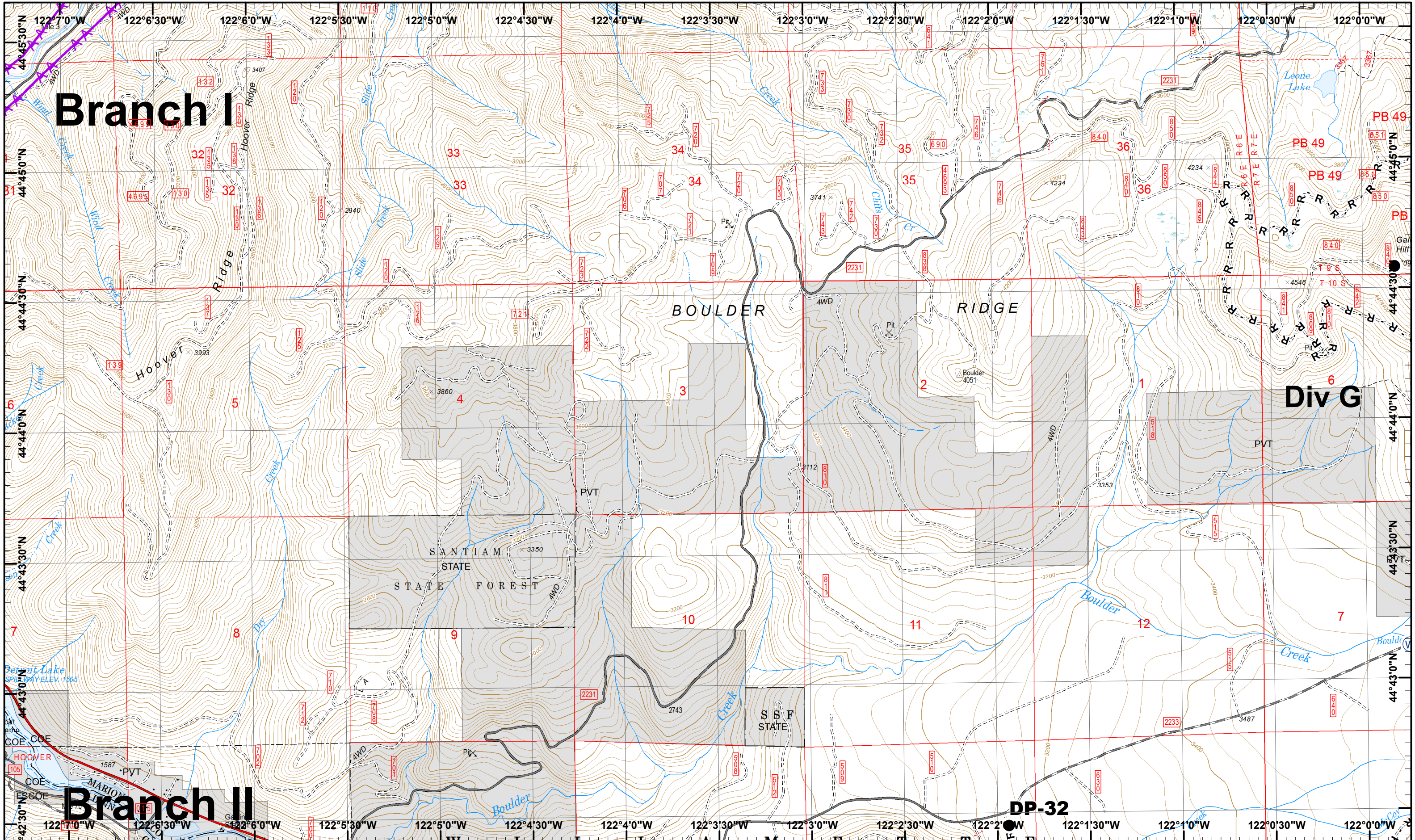


1	2	3
4	5	6
7	8	9
10	11	12
13	14	15

Page 6  
 (X) Division  
 (I) Branch







# Branch I

# Branch II

BOULDER RIDGE

SANTIAM STATE FOREST

Div G

**Whitewater Incident**  
 September 8, 2017

IR © 9/5/2017 1943  
 Whitewater Fire - 10,934 Acres  
 Little Devil Fire - 1,598 Acres  
 French Fire - 2 Acres  
 Scorpion Fire - 606 Acres  
 Potato Hill Fire - 199 Acres

Map Created 9/8/2017 10:07:19 PM RDC



Drop Point Water Source R Road as Line Powerline

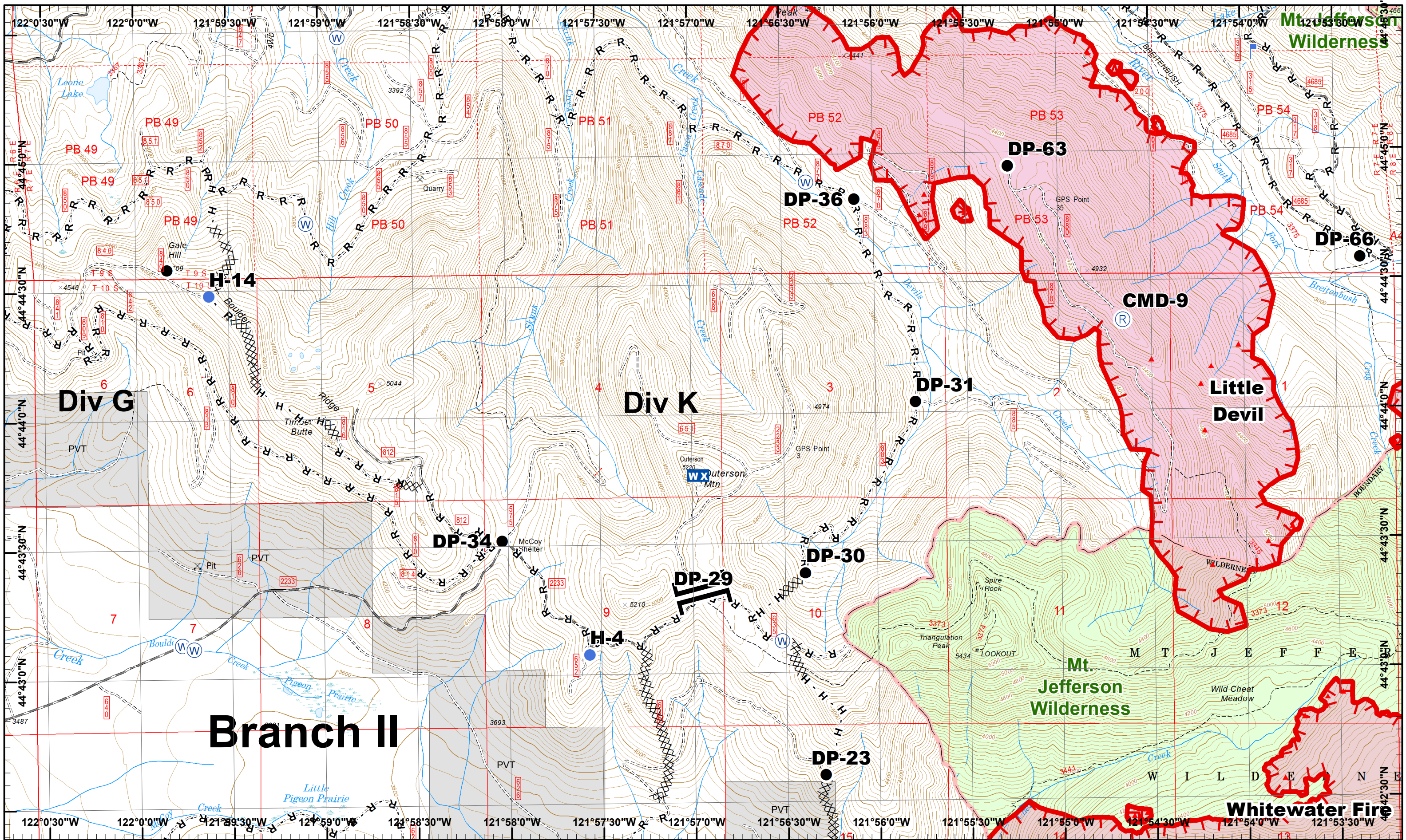


1	2	3
4	5	6
7	8	9
10	11	12
13	14	15

Page 7  
 X Division  
 I Branch







**Whitewater Incident**  
 September 8, 2017

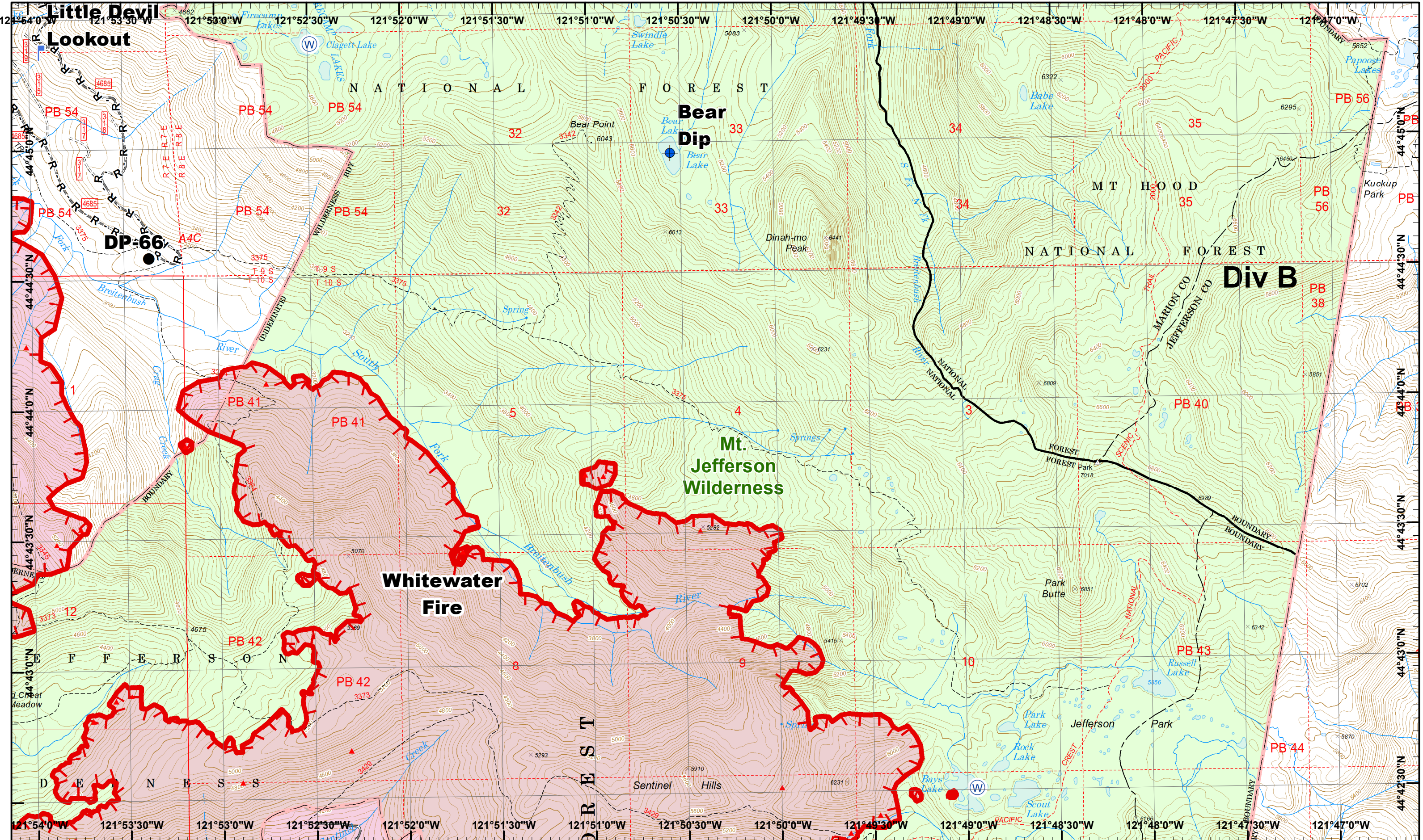
IR @ 9/5/2017 1943  
 Whitewater Fire - 10,934 Acres  
 Little Devil Fire - 1,598 Acres  
 French Fire - 2 Acres  
 Scorpion Fire - 606 Acres  
 Potato Hill Fire - 199 Acres  
 Map Created 9/8/2017 10:07:51 PM RDC

- North
- Drop Point
- IR Heat Source
- Mobile Weather
- Water Source
- Completed Dozer
- Road as Line
- Helispot
- Lookout
- Repeater
- Uncontrolled Fire
- Completed Hand



1	2	3
4	5	6
7	8	9
10	11	12
13	14	15





**Whitewater Incident**  
 September 8, 2017

IR @ 9/5/2017 1943  
 Whitewater Fire - 10,934 Acres  
 Little Devil Fire - 1,598 Acres  
 French Fire - 2 Acres  
 Scorpion Fire - 606 Acres  
 Potato Hill Fire - 199 Acres

Map Created 9/8/2017 10:08:18 PM RDC



- Dip Site
- ▲ IR Heat Source
- ⊙ Water Source
- R - Road as Line
- ✘ Proposed Dozer
- Drop Point
- └ Lookout
- ▬ Uncontrolled Fire

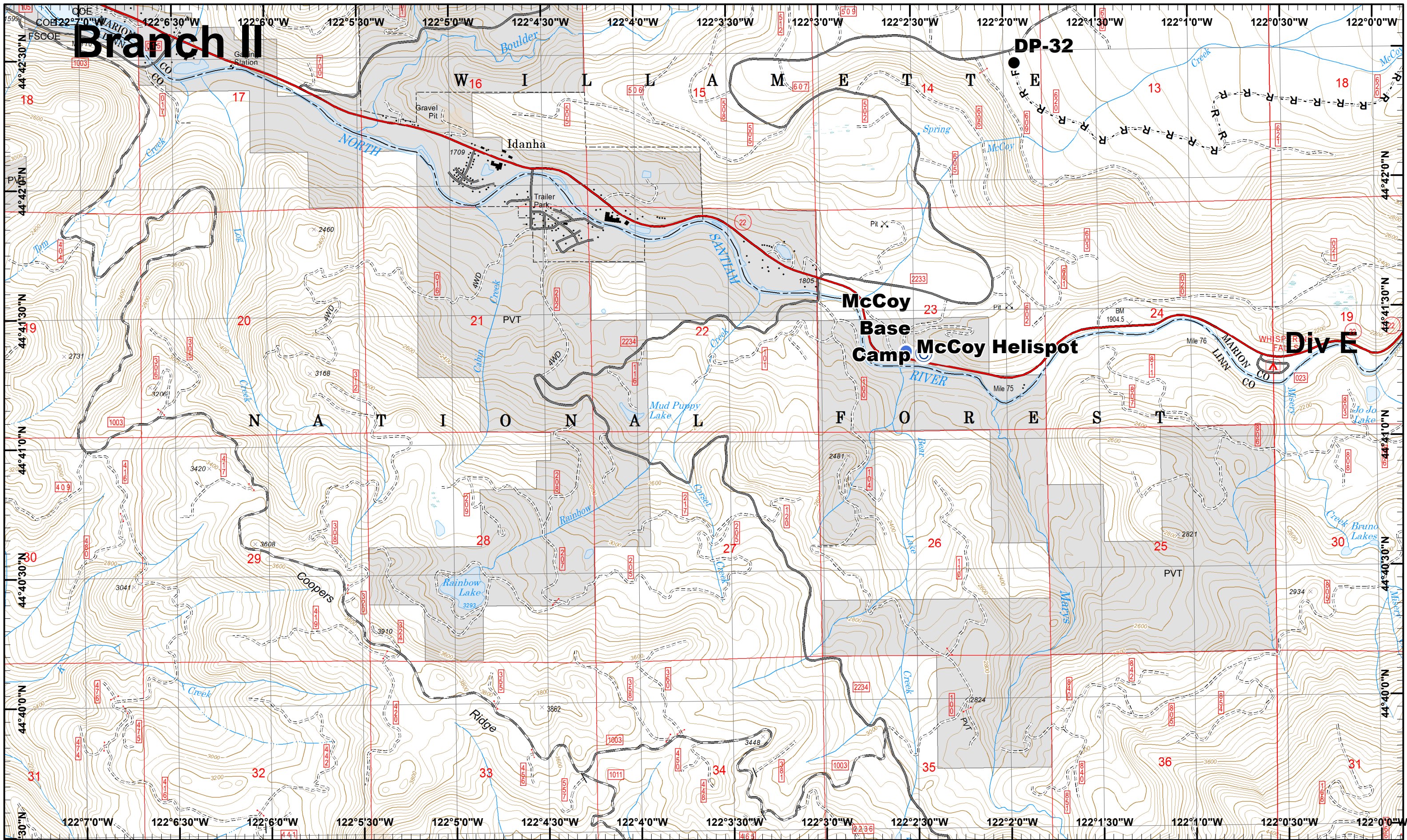


1	2	3
4	5	6
7	8	9
10	11	12
13	14	15

Page 9  
 (X) Division  
 (I) Branch







**Whitewater Incident**  
 September 8, 2017

IR @ 9/5/2017 1943  
 Whitewater Fire - 10,934 Acres  
 Little Devil Fire - 1,598 Acres  
 French Fire - 2 Acres  
 Scorpion Fire - 606 Acres  
 Potato Hill Fire - 199 Acres

Map Created 9/8/2017 10:01:22 PM RDC



- Camp
- Drop Point R - Road as Line
- Helispot

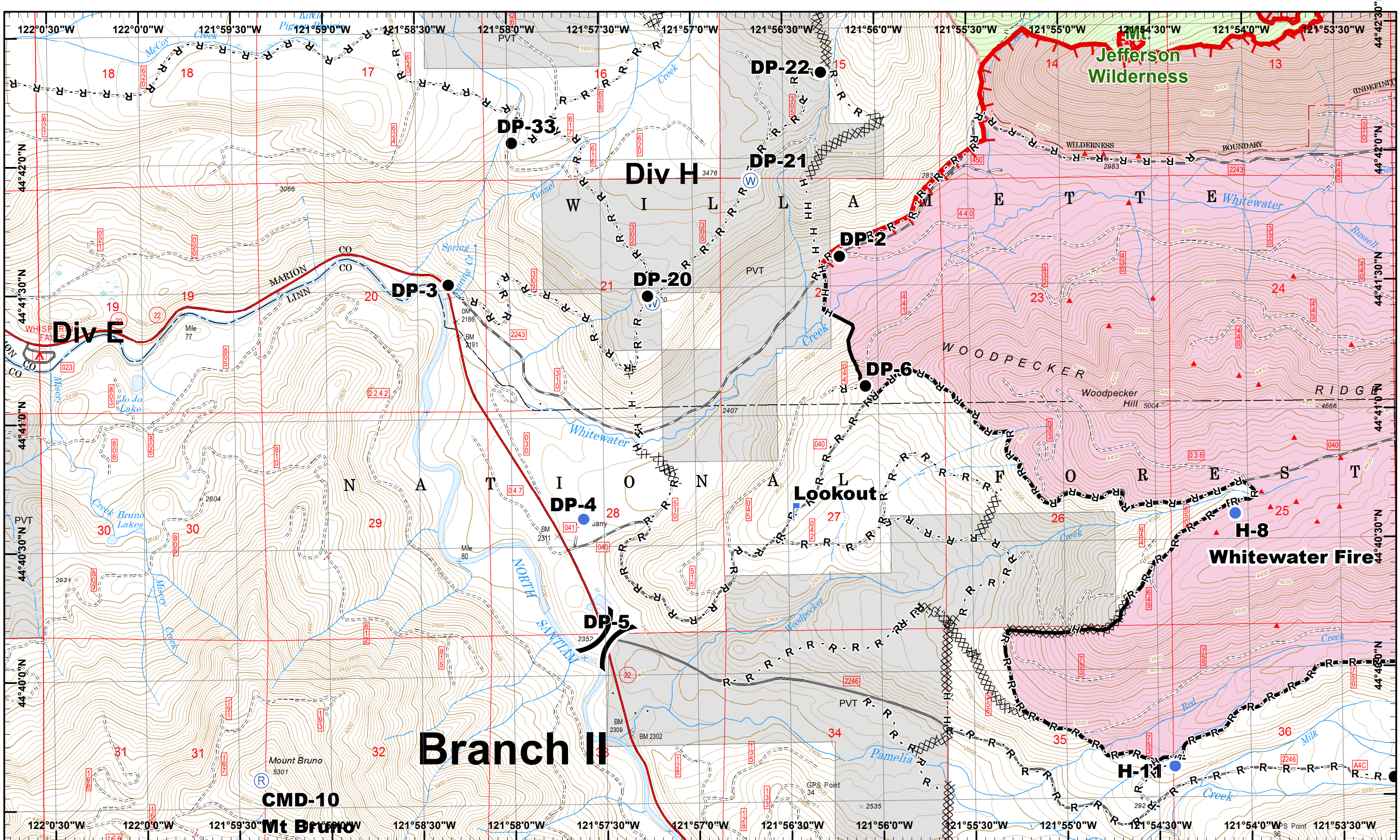


1	2	3
4	5	6
7	8	9
10	11	12
13	14	15

Page 10  
 X Division  
 I Branch







**Whitewater Incident**  
 September 8, 2017

IR @ 9/5/2017 1943  
 Whitewater Fire - 10,934 Acres  
 Little Devil Fire - 1,598 Acres  
 French Fire - 2 Acres  
 Scorpion Fire - 606 Acres  
 Potato Hill Fire - 199 Acres

Map Created 9/8/2017 10:01:50 PM RDC



- Drop Point
- ▲ IR Heat Source
- Ⓡ Repeater
- Ⓜ Water Source
- Completed
- H - Completed Hand
- Helispot
- Ⓡ Lookout
- Uncontrolled Fire
- XXXX Completed Dozer
- R - Road as Line

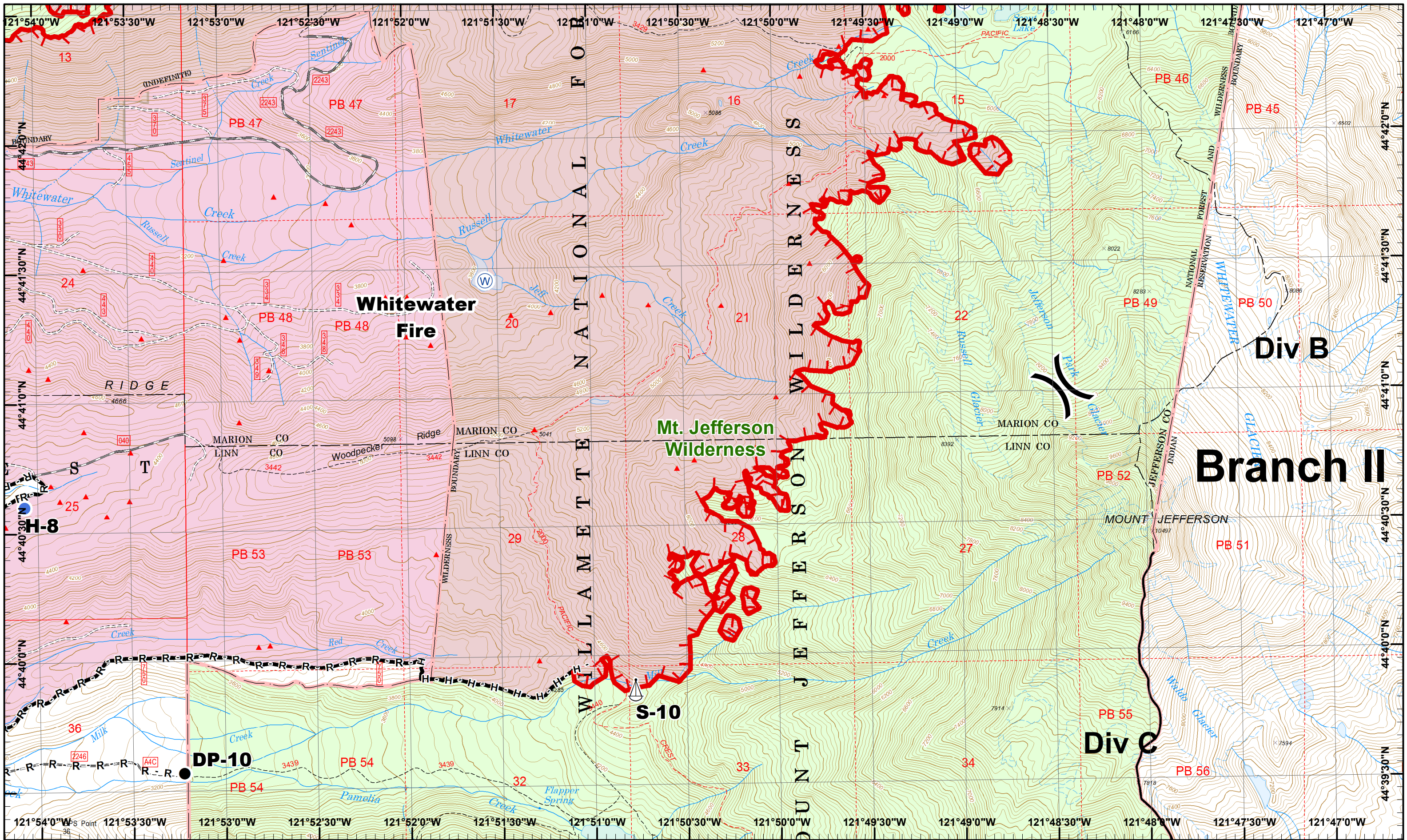


1	2	3
4	5	6
7	8	9
10	11	12
13	14	15

Page 11  
 ( ) Division  
 [ ] Branch







**Whitewater Incident**  
 September 8, 2017

IR @ 9/5/2017 1943  
 Whitewater Fire - 10,934 Acres  
 Little Devil Fire - 1,598 Acres  
 French Fire - 2 Acres  
 Scorpion Fire - 606 Acres  
 Potato Hill Fire - 199 Acres  
 Map Created 9/8/2017 10:02:17 PM RDC



- Drop Point
- ▲ IR Heat Source
- ⚓ Sling Site
- Ⓜ Water Source
- Completed
- R - Road as Line
- Helispot
- Helispot
- Completed Hand
- Uncontrolled Fire



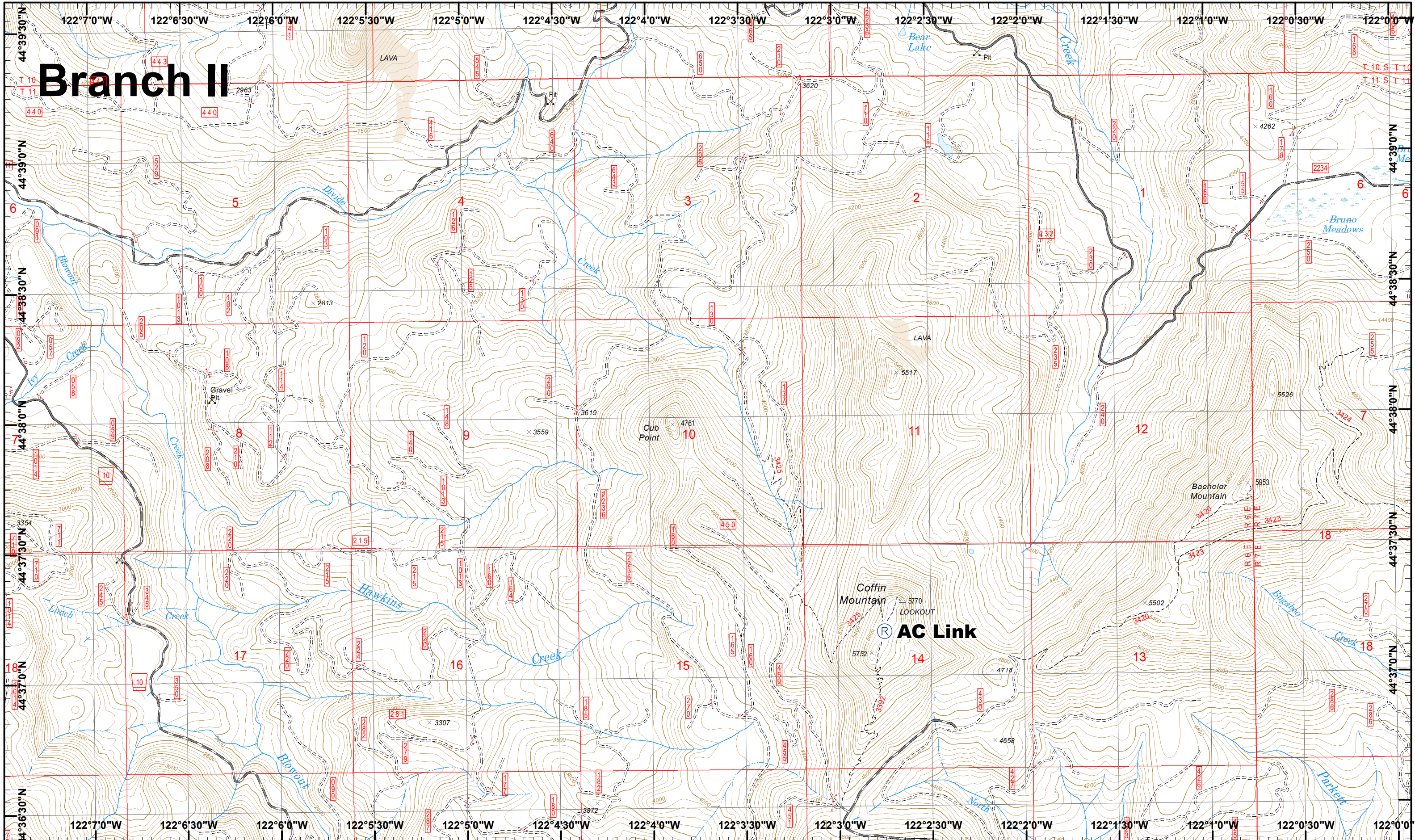
1	2	3
4	5	6
7	8	9
10	11	12
13	14	15

Page 12  
 X Division  
 I Branch





# Branch II



**Whitewater Incident**  
 September 8, 2017

IR © 9/5/2017 1943  
 Whitewater Fire - 10,934 Acres  
 Little Devil Fire - 1,598 Acres  
 French Fire - 2 Acres  
 Scorpion Fire - 606 Acres  
 Potato Hill Fire - 199 Acres



Map Created 9/8/2017 10:02:43 PM RDC

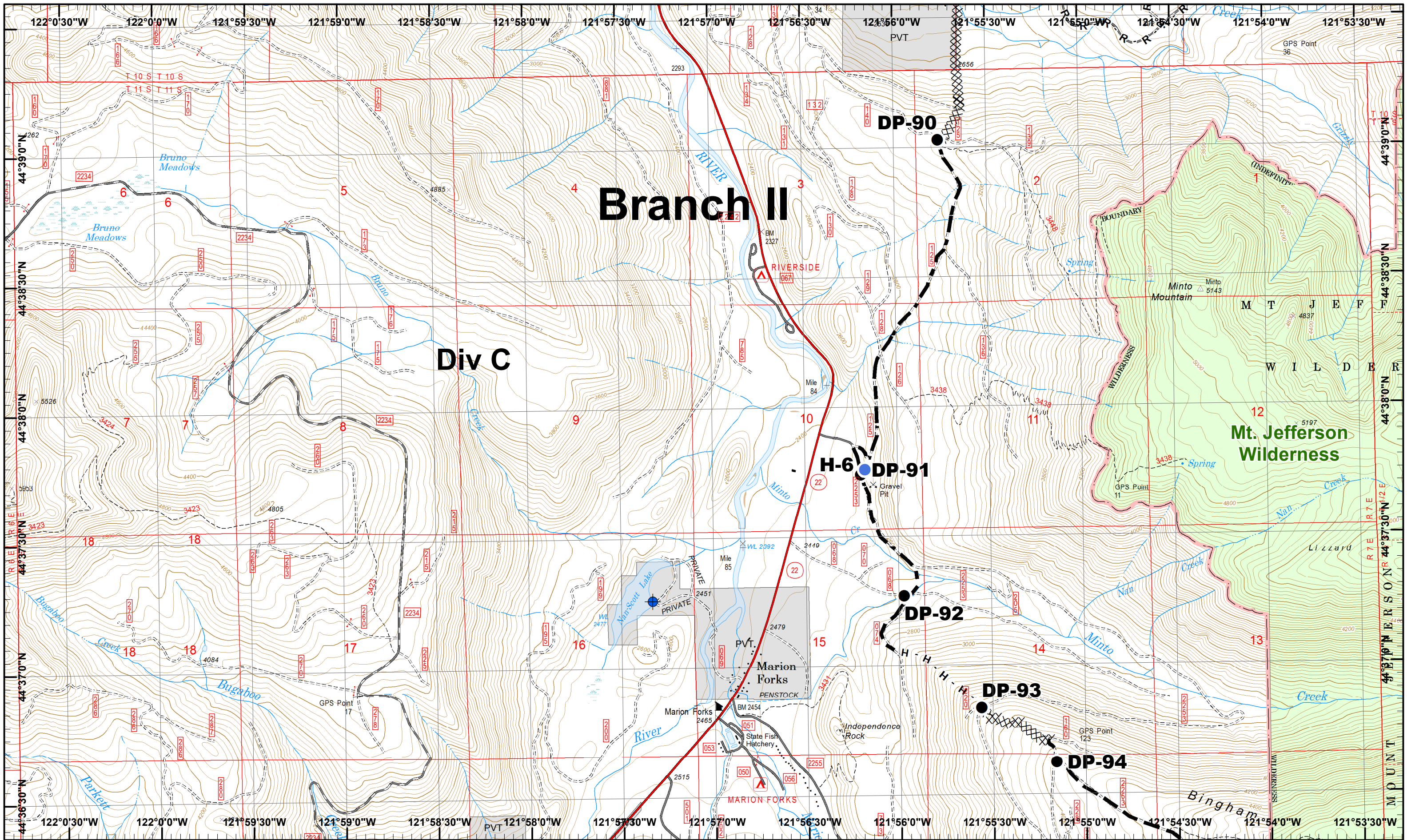


1	2	3
4	5	6
7	8	9
10	11	12
13	14	15

Page 13  
 X Division  
 I Branch







**Whitewater Incident**  
 September 8, 2017

IR @ 9/5/2017 1943  
 Whitewater Fire - 10,934 Acres  
 Little Devil Fire - 1,598 Acres  
 French Fire - 2 Acres  
 Scorpion Fire - 606 Acres  
 Potato Hill Fire - 199 Acres

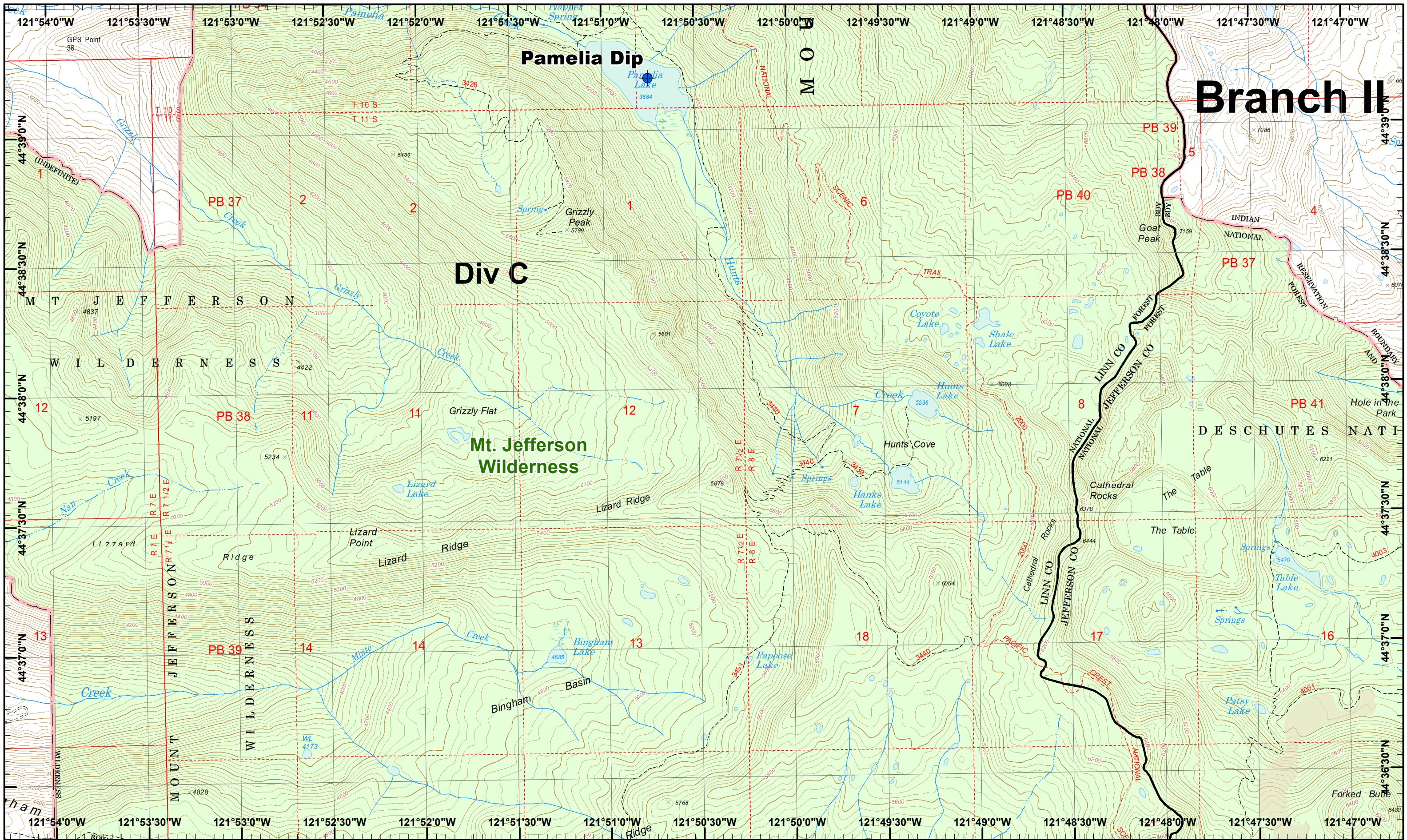
Map Created 9/8/2017 10:03:08 PM RDC

Dip Site  
 Helispot  
 Repeater  
 Completed Dozer  
 Road as Line  
 Drop Point  
 Completed Hand  
 Planned Fire Line



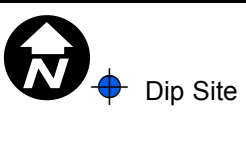
1	2	3
4	5	6
7	8	9
10	11	12
13	14	15





**Whitewater Incident**  
 September 8, 2017

IR @ 9/5/2017 1943  
 Whitewater Fire - 10,934 Acres  
 Little Devil Fire - 1,598 Acres  
 French Fire - 2 Acres  
 Scorpion Fire - 606 Acres  
 Potato Hill Fire - 199 Acres

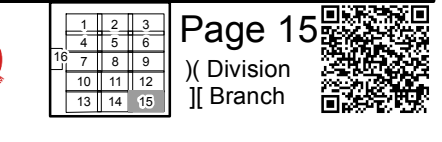


Map Created 9/8/2017 10:03:32 PM RDC

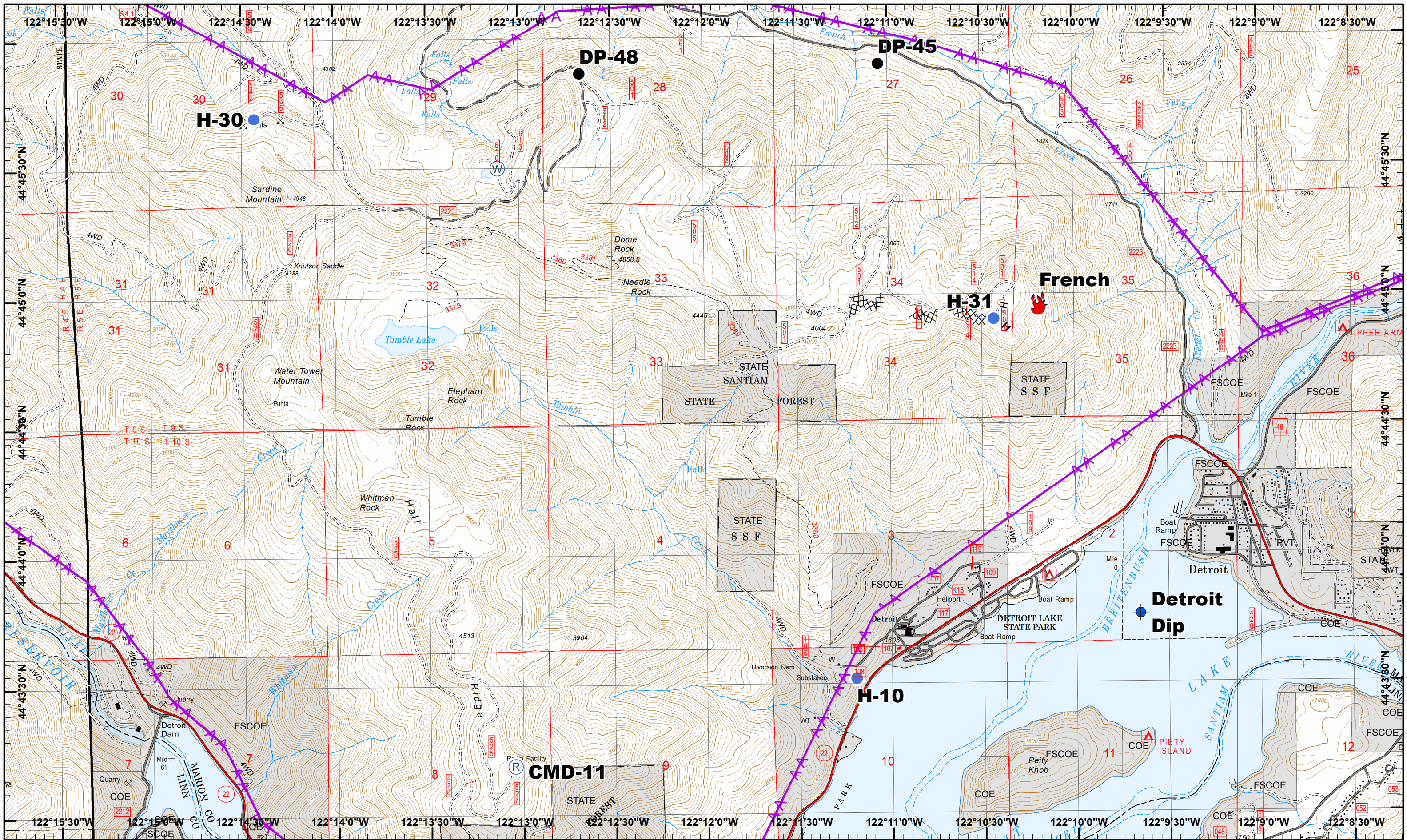


1	2	3
4	5	6
7	8	9
10	11	12
13	14	15

Page 15  
 (X) Division  
 (I) Branch







**Whitewater Incident**  
 September 8, 2017

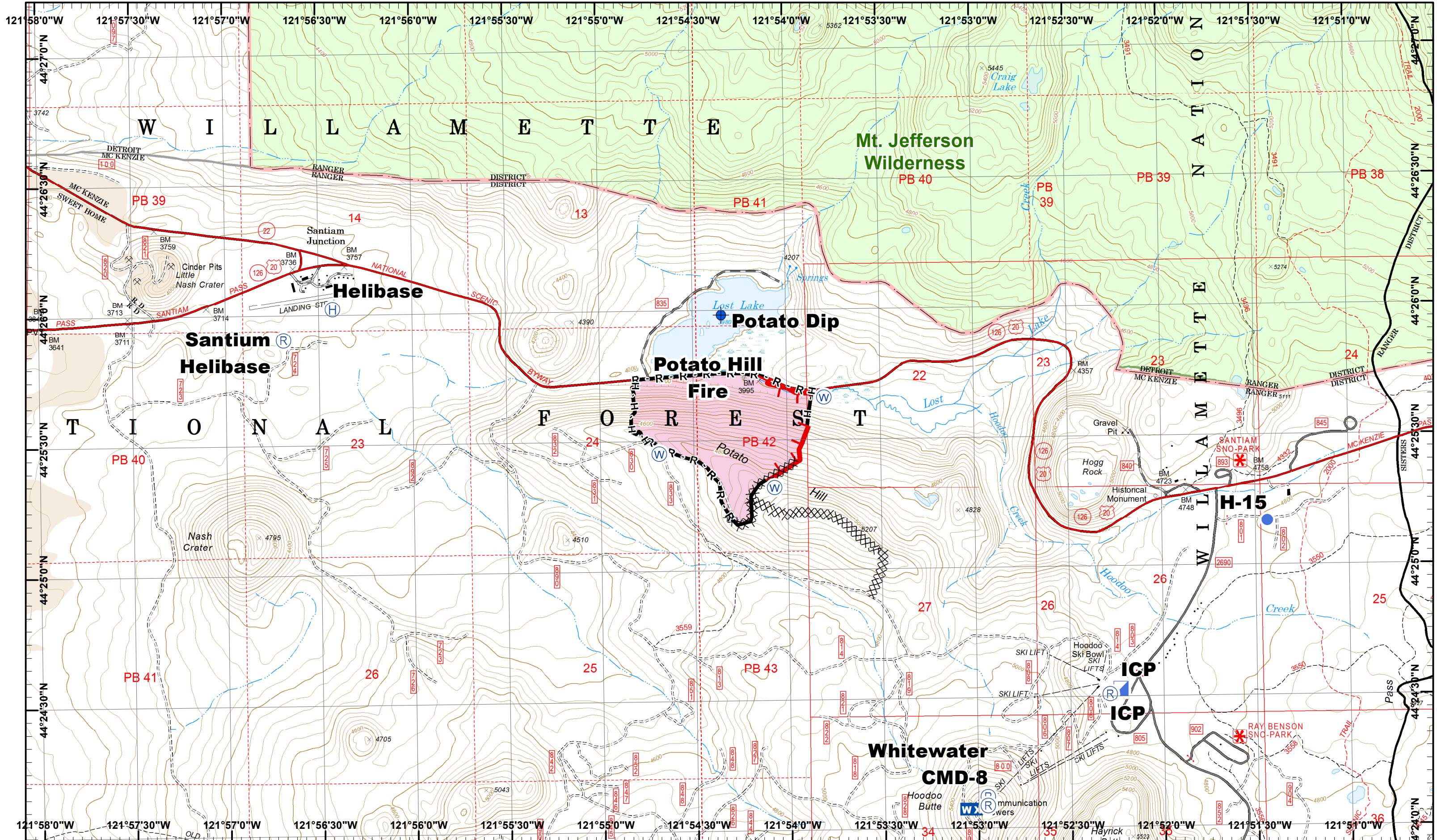
IR @ 9/5/2017 1943  
 Whitewater Fire - 10,934 Acres  
 Little Devil Fire - 1,598 Acres  
 French Fire - 2 Acres  
 Scorpion Fire - 606 Acres  
 Potato Hill Fire - 199 Acres  
 Map Created 9/8/2017 10:04:00 PM RDC

Dip Site  
 Fire Location  
 Helispot  
 Repeater  
 Water Source  
 Completed Dozer  
 Powerline  
 Drop Point  
 Completed Hand



1	2	3
4	5	6
7	8	9
10	11	12
13	14	15





**Whitewater Incident**  
 September 8, 2017

IR @ 9/5/2017 1943  
 Whitewater Fire - 10,934 Acres  
 Little Devil Fire - 1,598 Acres  
 French Fire - 2 Acres  
 Scorpion Fire - 606 Acres  
 Potato Hill Fire - 199 Acres

Map Created 9/8/2017 10:04:26 PM RDC



- Dip Site
- Helibase
- Helispot
- Incident Command Post
- Repeater
- Water Source
- Mobile Weather
- Uncontrolled Fire



1	2	3
4	5	6
7	8	9
10	11	12
13	14	15

Page 17  
 X Division  
 I Branch

