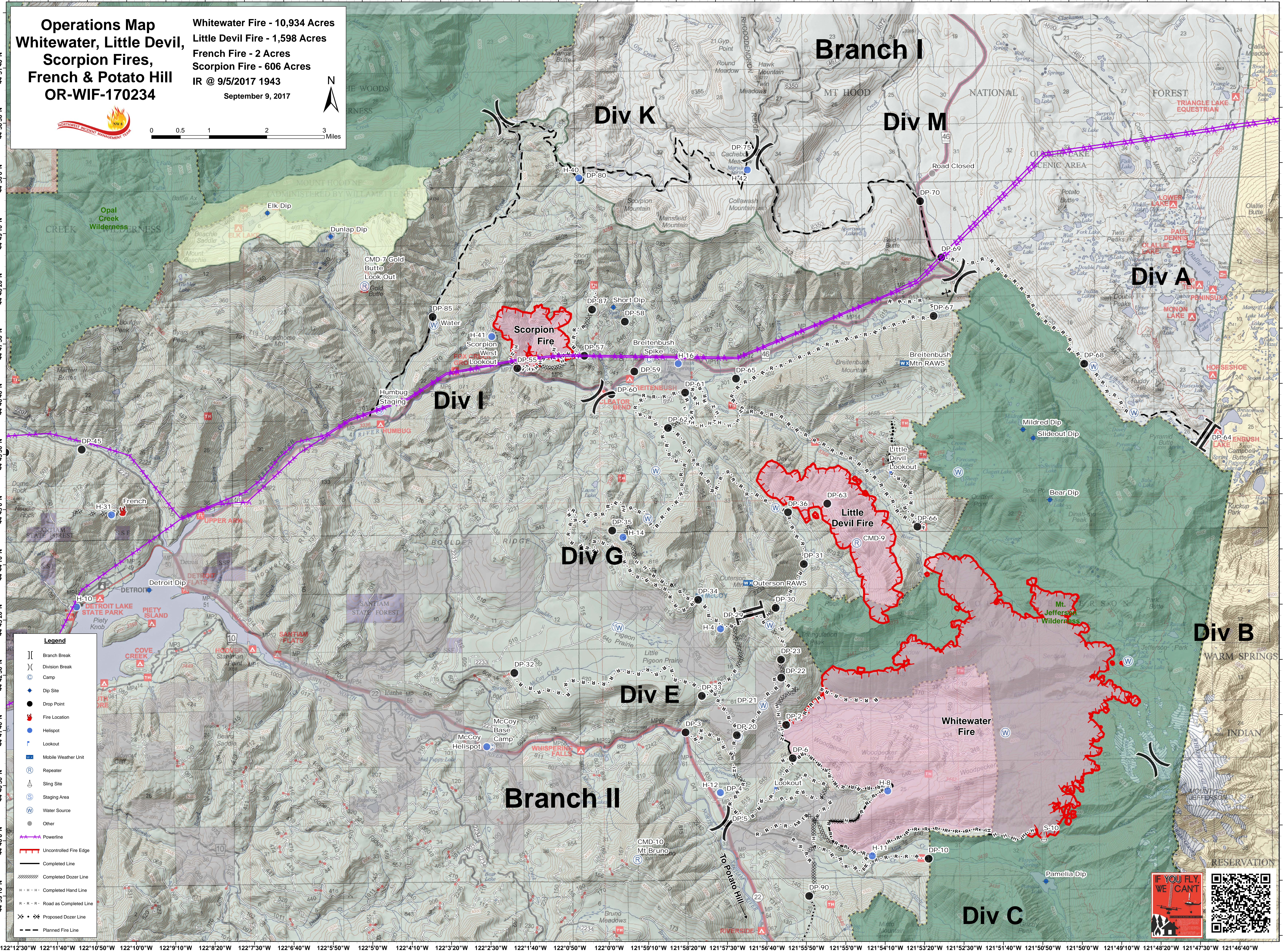
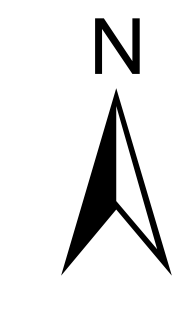
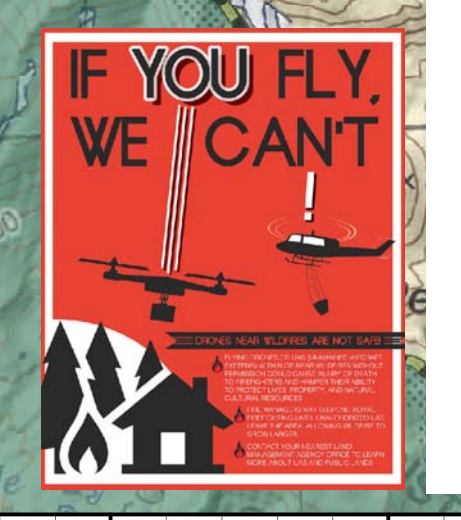


Operations Map
Whitewater, Little Devil, Scorpion Fires, French & Potato Hill
OR-WIF-170234

Whitewater Fire - 10,934 Acres
 Little Devil Fire - 1,598 Acres
 French Fire - 2 Acres
 Scorpion Fire - 606 Acres
 IR @ 9/5/2017 1943
 September 9, 2017



- Legend**
- [] Branch Break
 - () Division Break
 - ⊙ Camp
 - Dip Site
 - Drop Point
 - 🔥 Fire Location
 - 📍 Helispot
 - 👁 Lookout
 - 📡 Mobile Weather Unit
 - 📻 Repeater
 - 🏠 Sling Site
 - 📍 Staging Area
 - 💧 Water Source
 - ⦿ Other
 - ⚡ Powerline
 - 🔴 Uncontrolled Fire Edge
 - Completed Line
 - ⊘ Completed Dozer Line
 - ⋯ Completed Hand Line
 - ⋯ Road as Completed Line
 - ⊗ Proposed Dozer Line
 - ⋯ Planned Fire Line



122°12'30"W 122°11'40"W 122°10'50"W 122°10'0"W 122°9'10"W 122°8'20"W 122°7'30"W 122°6'40"W 122°5'50"W 122°5'0"W 122°4'10"W 122°3'20"W 122°2'30"W 122°1'40"W 122°0'50"W 122°0'0"W 121°59'10"W 121°58'20"W 121°57'30"W 121°56'40"W 121°55'50"W 121°55'0"W 121°54'10"W 121°53'20"W 121°52'30"W 121°51'40"W 121°50'50"W 121°50'0"W 121°49'10"W 121°48'20"W 121°47'30"W 121°46'40"W 121°45'50"W