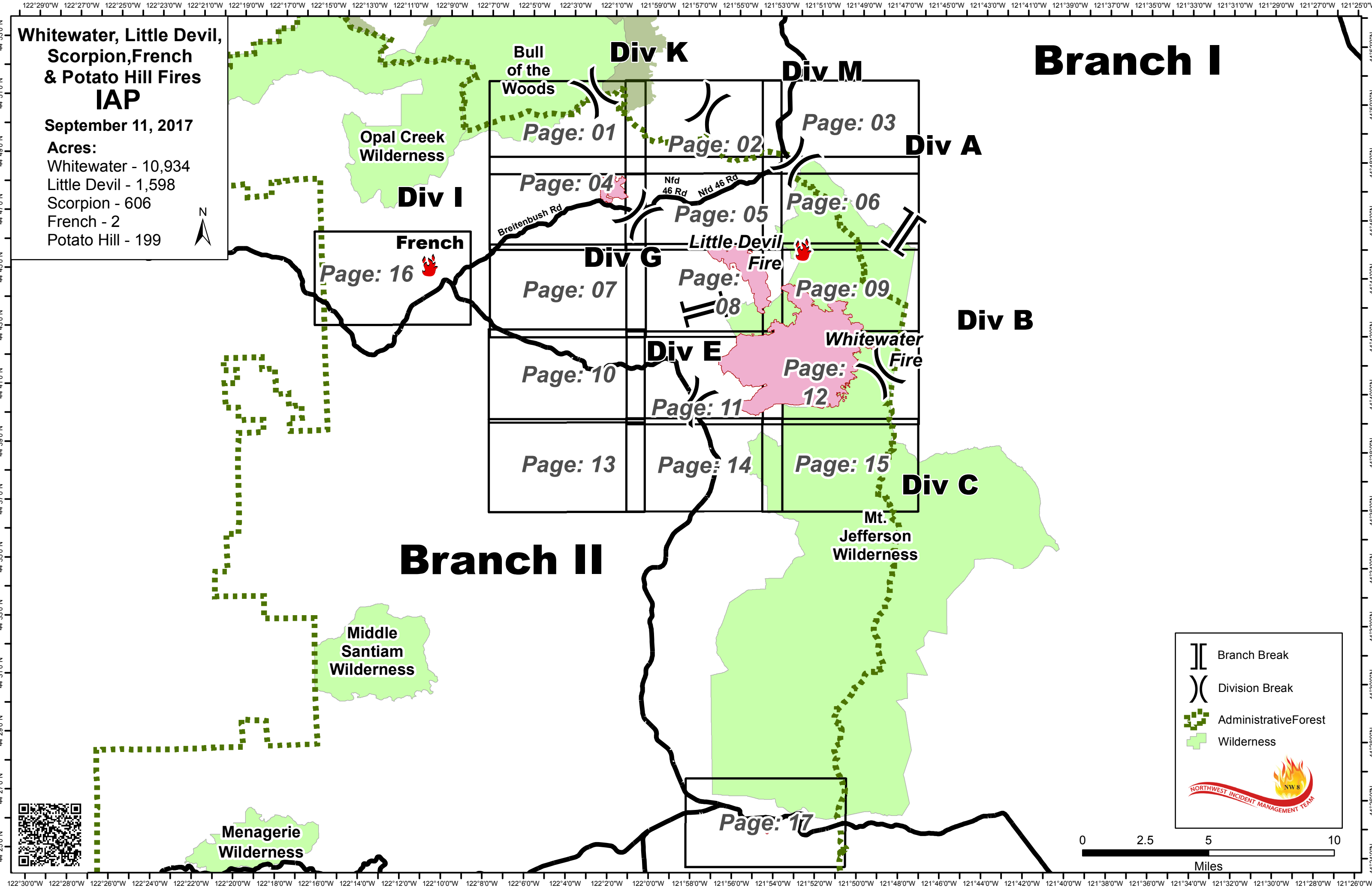



# Whitewater, Little Devil, Scorpion, French & Potato Hill Fires IAP

September 11, 2017

Acres:  
Whitewater - 10,934  
Little Devil - 1,598  
Scorpion - 606  
French - 2  
Potato Hill - 199



**French**  
Page: 16 

<b>Div K</b> Page: 01	<b>Div M</b> Page: 03
<b>Div I</b> Page: 04	<b>Div A</b> Page: 06
<b>Div G</b> Page: 07	<b>Div B</b> Page: 09
<b>Div E</b> Page: 10	<b>Div C</b> Page: 15

**Little Devil Fire** Page: 08

**Whitewater Fire** Page: 12

## Branch II

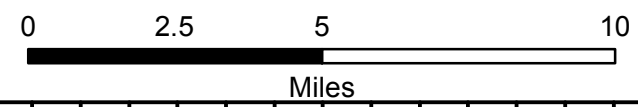
## Branch I

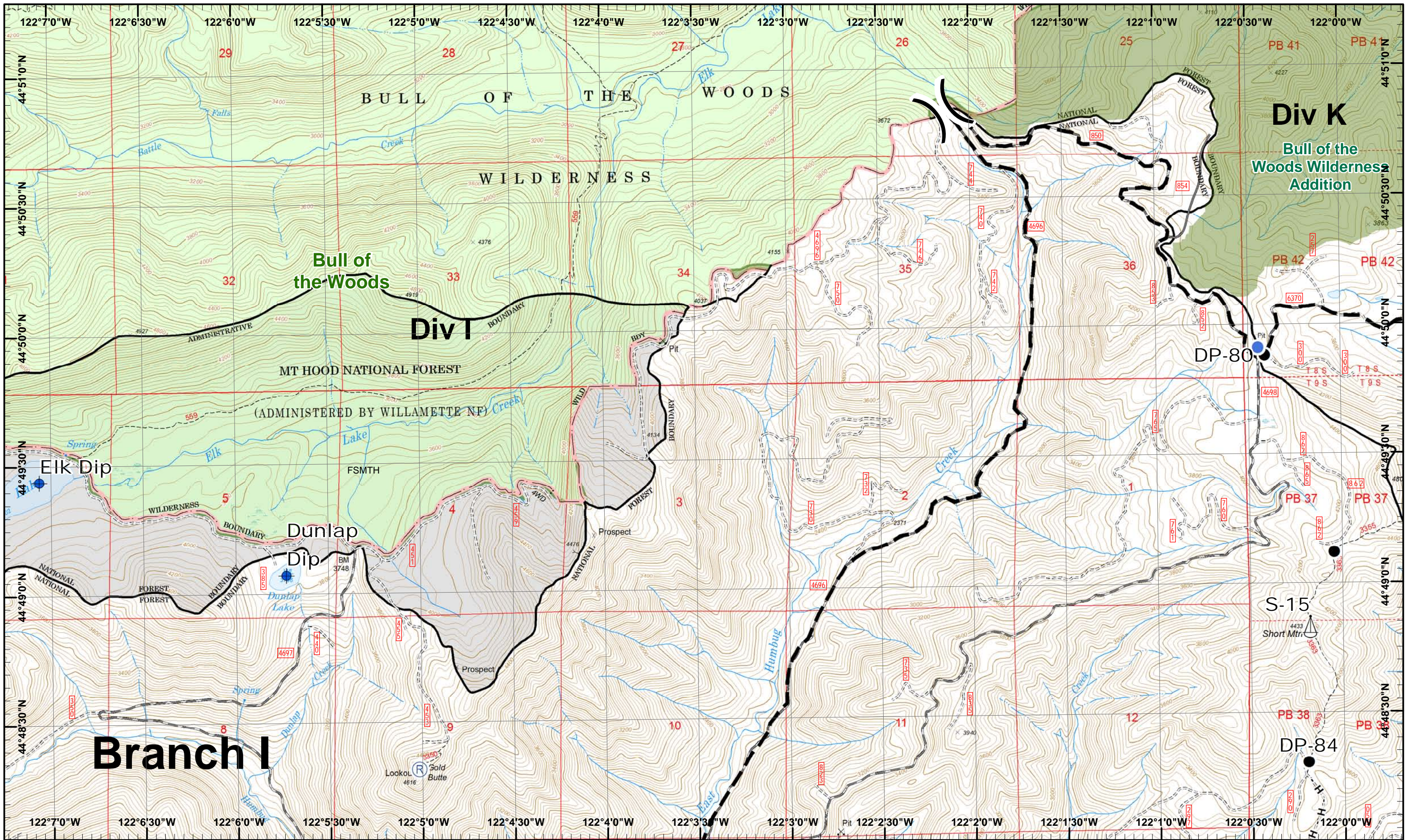
 Branch Break

 Division Break

 Administrative Forest

 Wilderness





**Whitewater Incident**  
 September 11, 2017

IR @ 9/5/2017 1943  
 Whitewater Fire - 10,934 Acres  
 Little Devil Fire - 1,598 Acres  
 French Fire - 2 Acres  
 Scorpion Fire - 606 Acres  
 Potato Hill Fire - 199 Acres  
 Map Created 9/10/2017 9:07:20 PM RDC

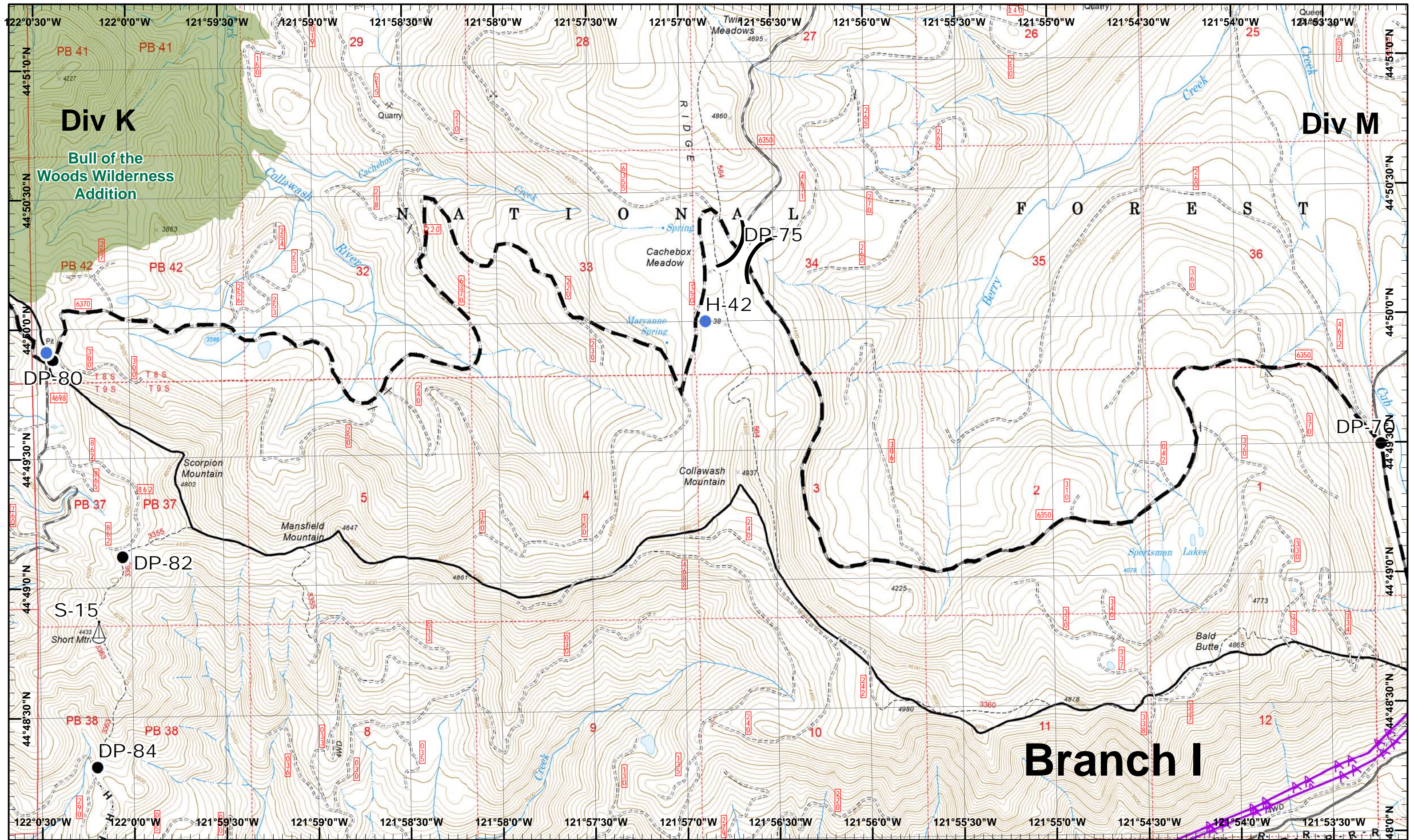
Dip Site  
 Helispot  
 Repeater  
 Sling Site  
 H - Completed Hand  
 Planned Fire Line  
 Drop Point



01	02	03
04	05	06
07	08	09
10	11	12
13	14	15

Page 01  
 ( ) Division  
 [ ] Branch





**Whitewater Incident**  
 September 11, 2017

IR © 9/5/2017 1943  
 Whitewater Fire - 10,934 Acres  
 Little Devil Fire - 1,598 Acres  
 French Fire - 2 Acres  
 Scorpion Fire - 606 Acres  
 Potato Hill Fire - 199 Acres  
 Map Created 9/10/2017 9:07:46 PM RDC



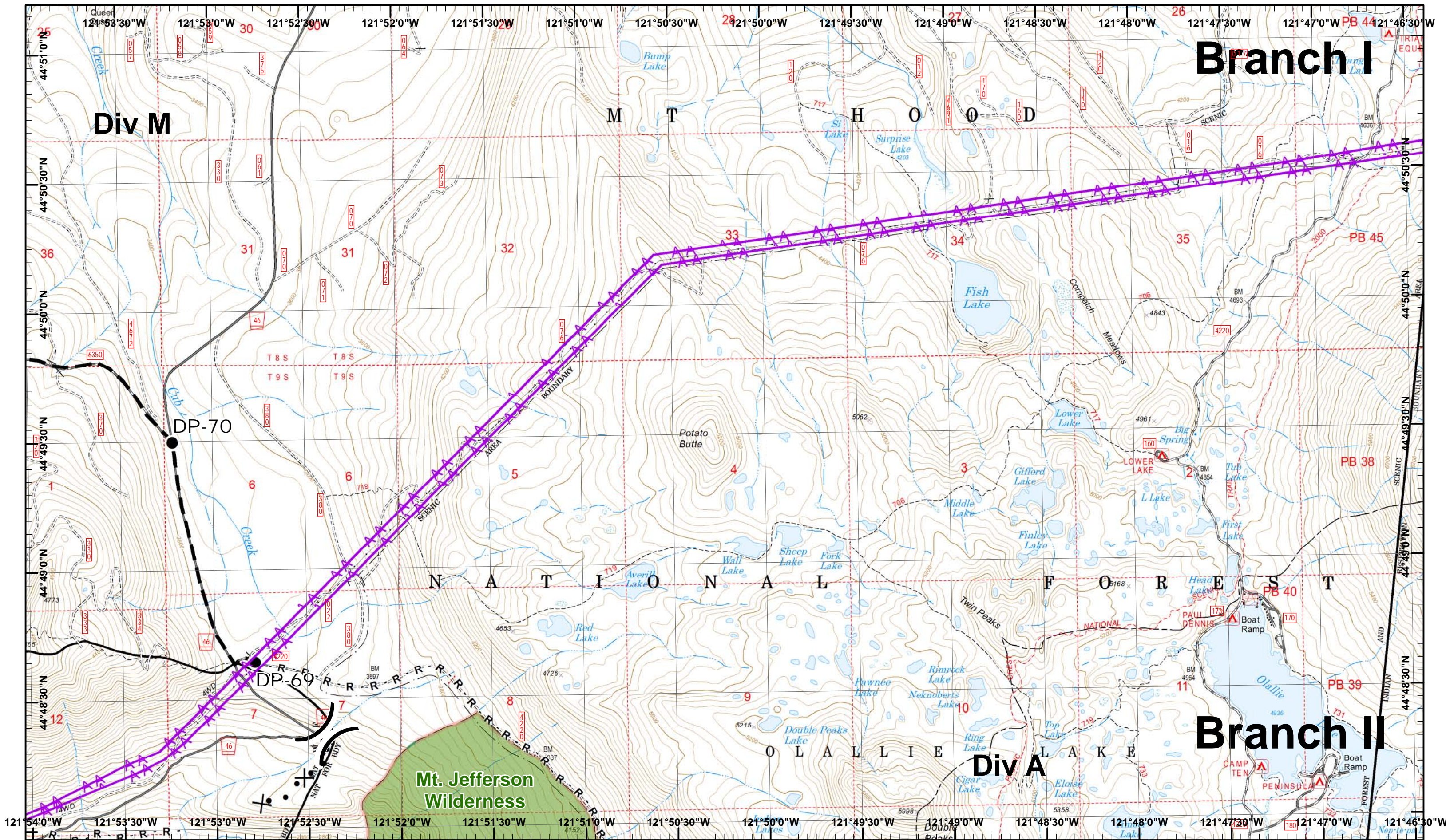
Completed Hand (H) - Completed Hand  
 Road as Line (R) - Road as Line  
 Planned Fire Line (thick black line)  
 Powerline (purple line with triangles)



01	02	03
04	05	06
07	08	09
10	11	12
13	14	15

Page 02  
 ( ) Division  
 [ ] Branch





**Whitewater Incident**  
 September 11, 2017

IR © 9/5/2017 1943  
 Whitewater Fire - 10,934 Acres  
 Little Devil Fire - 1,598 Acres  
 French Fire - 2 Acres  
 Scorpion Fire - 606 Acres  
 Potato Hill Fire - 199 Acres  
 Map Created 9/10/2017 9:08:14 PM RCD

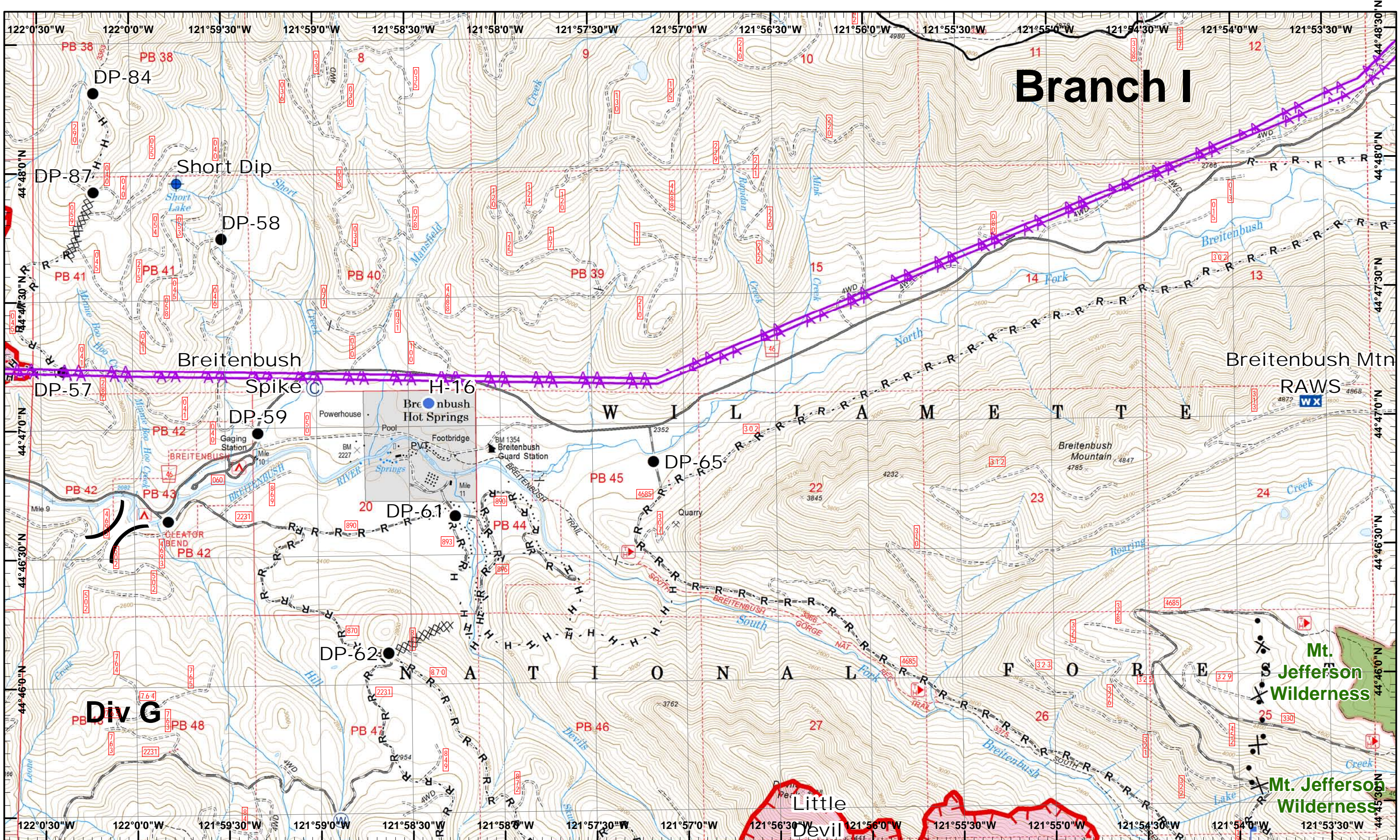
Drop Point  
 R - Road as Line  
 • Proposed Dozer  
 Powerline  
 H - Completed Hand  
 Planned Fire Line



01	02	03
04	05	06
07	08	09
10	11	12
13	14	15







# Branch I

**Whitewater Incident**  
 September 11, 2017

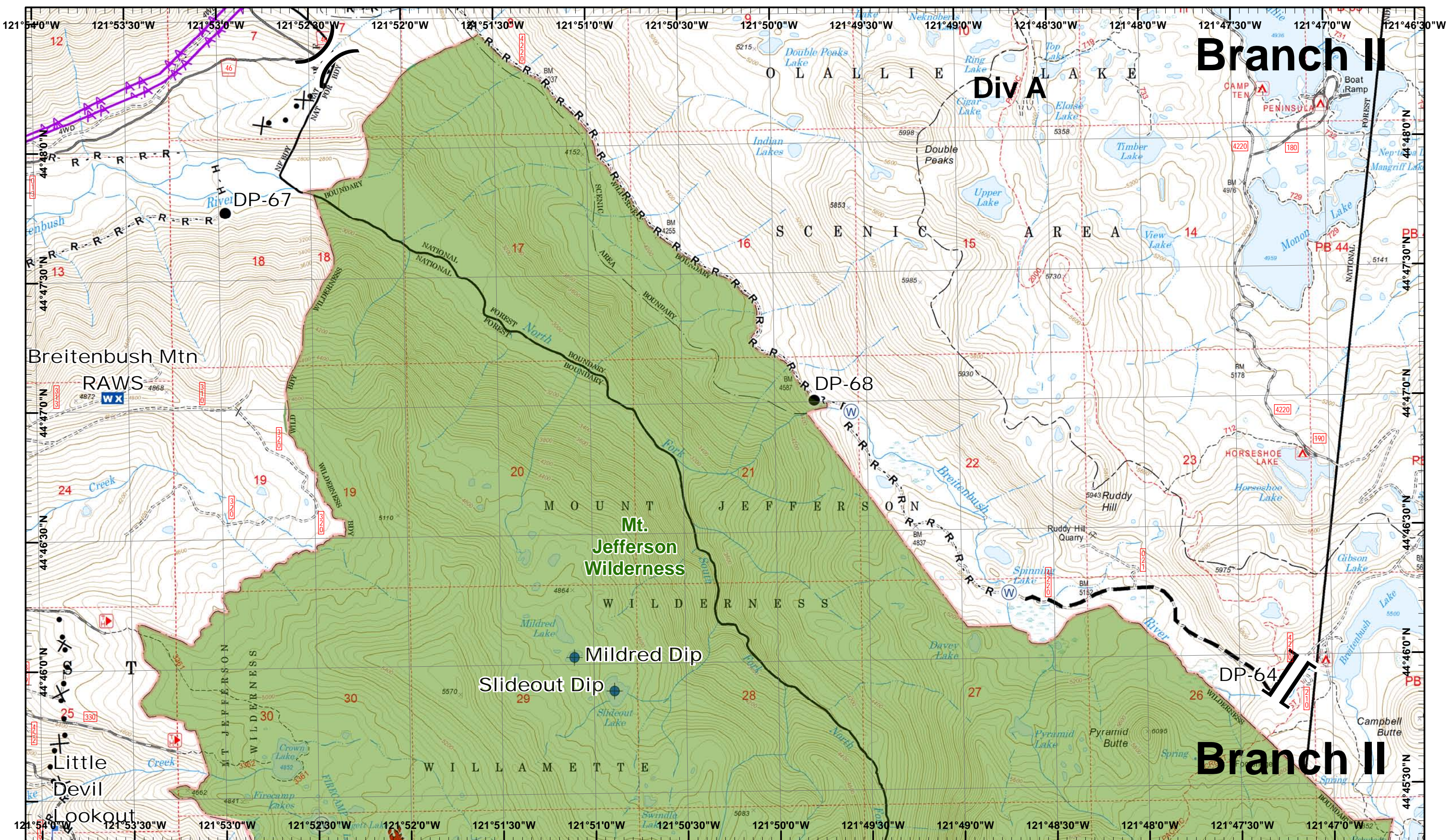
IR © 9/5/2017 1943  
 Whitewater Fire - 10,934 Acres  
 Little Devil Fire - 1,598 Acres  
 French Fire - 2 Acres  
 Scorpion Fire - 606 Acres  
 Potato Hill Fire - 199 Acres  
 Map Created 9/10/2017 9:09:15 PM RDC

- North
- Camp
- Dip Site
- Helispot
- Lookout
- Water Source
- Completed Dozer R
- Road as Line
- Proposed
- Mobile Weather
- Uncontrolled Fire
- Completed Hand
- Powerline



01	02	03
04	05	06
07	08	09
10	11	12
13	14	15





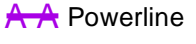
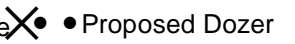
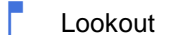
**Branch II**

**Div A**

**Branch II**

**Whitewater Incident**  
September 11, 2017

IR © 9/5/2017 1943  
Whitewater Fire - 10,934 Acres  
Little Devil Fire - 1,598 Acres  
French Fire - 2 Acres  
Scorpion Fire - 606 Acres  
Potato Hill Fire - 199 Acres



Map Created 9/10/2017 9:09:47 PM RDC

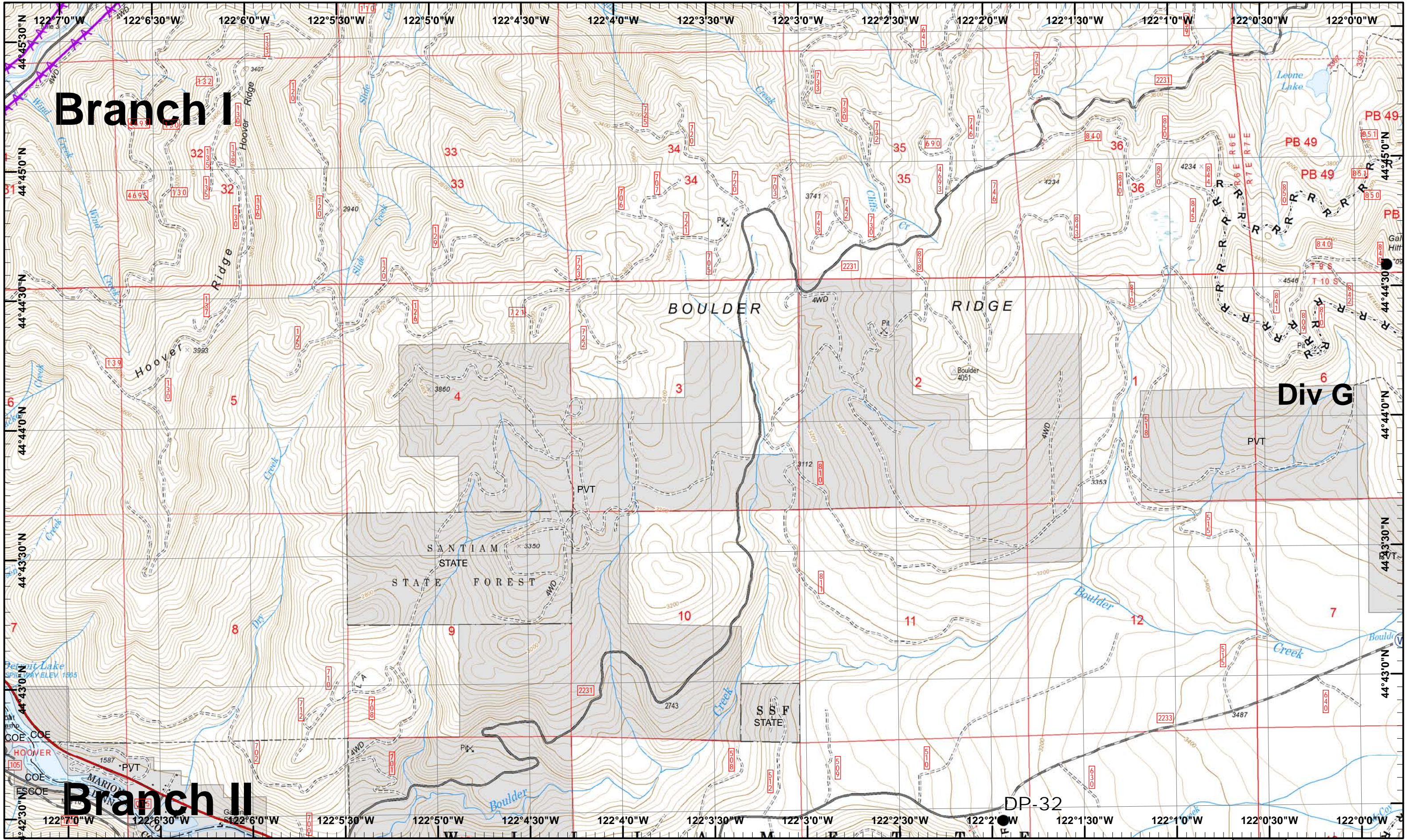
Mobile Weather H - Completed Hand

Planned Fire Line

01	02	03
04	05	06
07	08	09
10	11	12
13	14	15

Page 06  
X Division  
I Branch





**Whitewater Incident**  
 September 11, 2017

IR © 9/5/2017 1943  
 Whitewater Fire - 10,934 Acres  
 Little Devil Fire - 1,598 Acres  
 French Fire - 2 Acres  
 Scorpion Fire - 606 Acres  
 Potato Hill Fire - 199 Acres  
 Map Created 9/10/2017 9:10:14 PM RDC



Drop Point Water Source R - Road as Line Powerline

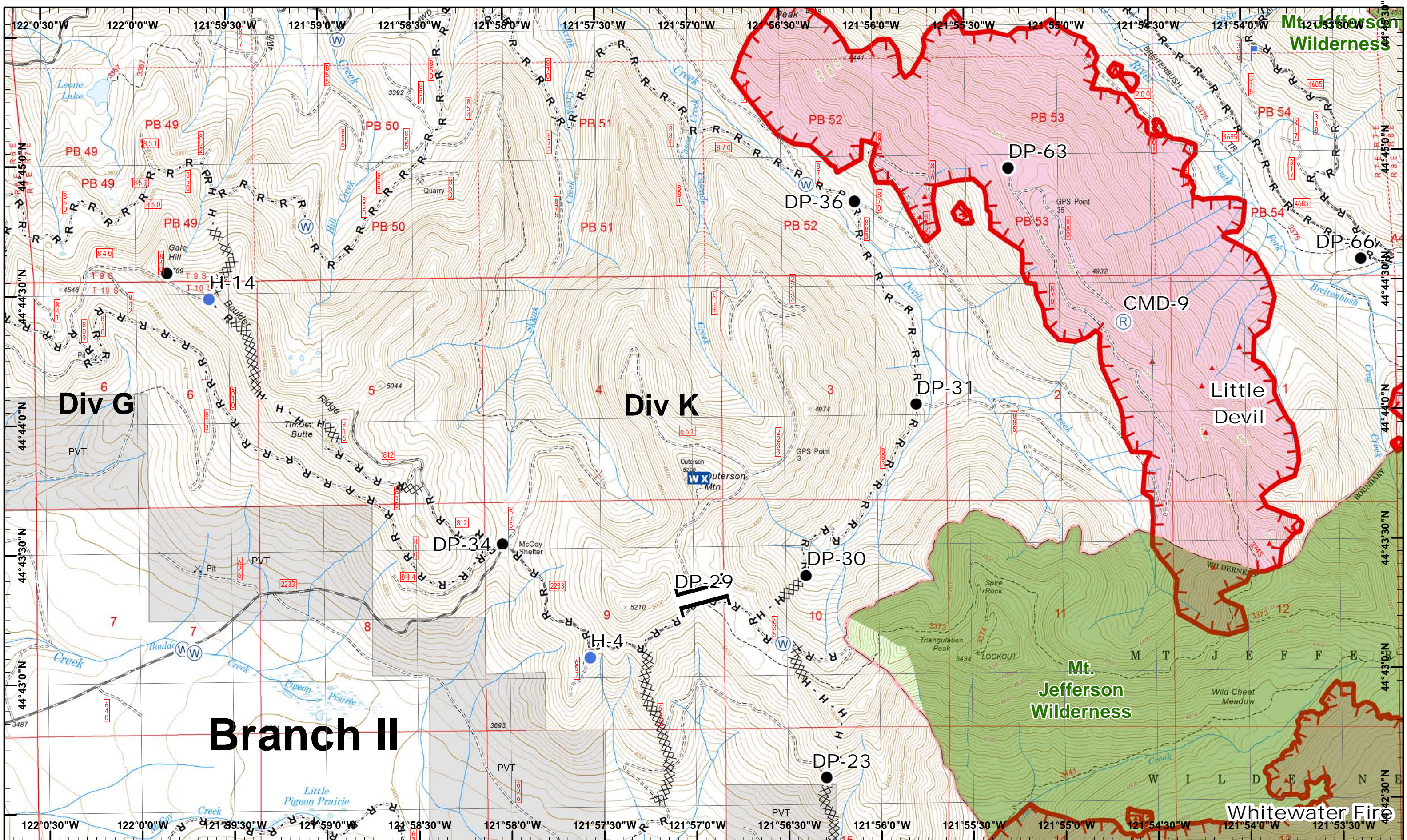


01	02	03
04	05	06
07	08	09
10	11	12
13	14	15

Page 07  
 ) Division  
 | Branch







**Whitewater Incident**  
 September 11, 2017

IR © 9/5/2017 1943  
 Whitewater Fire - 10,934 Acres  
 Little Devil Fire - 1,598 Acres  
 French Fire - 2 Acres  
 Scorpion Fire - 606 Acres  
 Potato Hill Fire - 199 Acres  
 Map Created 9/10/2017 9:10:46 PM RDC

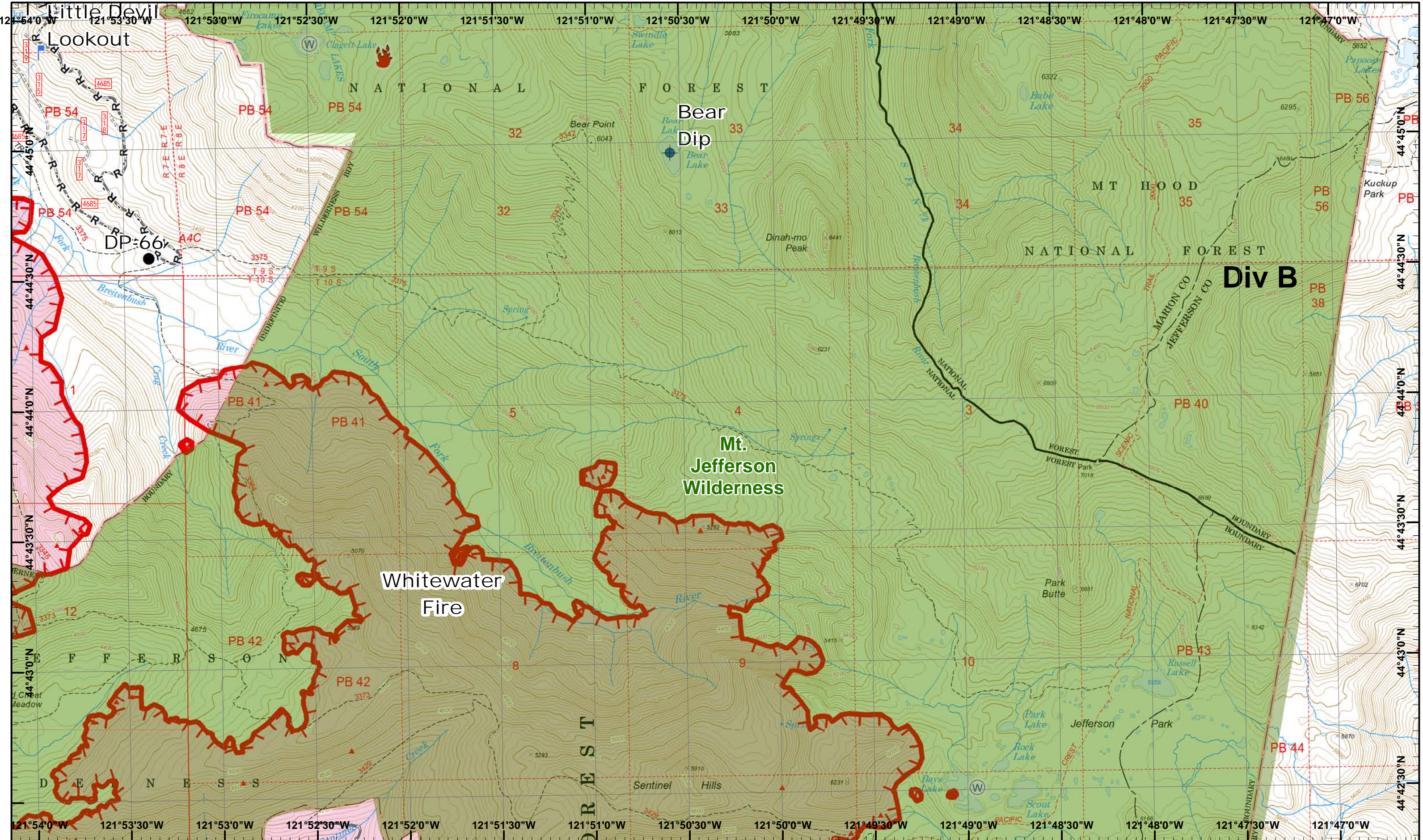
- North
- Drop Point
- IR Heat Source
- Mobile Weather
- Water Source
- Completed Dozer R - Road as Line
- Helispot
- Lookout
- Repeater
- Uncontrolled Fire
- Completed Hand



01	02	03
04	05	06
07	08	09
10	11	12
13	14	15

Page 08  
 ( ) Division  
 [ ] Branch





**Whitewater Incident**  
 September 11, 2017

IR © 9/5/2017 1943  
 Whitewater Fire - 10,934 Acres  
 Little Devil Fire - 1,598 Acres  
 French Fire - 2 Acres  
 Scorpion Fire - 606 Acres  
 Potato Hill Fire - 199 Acres  
 Map Created 9/10/2017 9:11:14 PM RDC

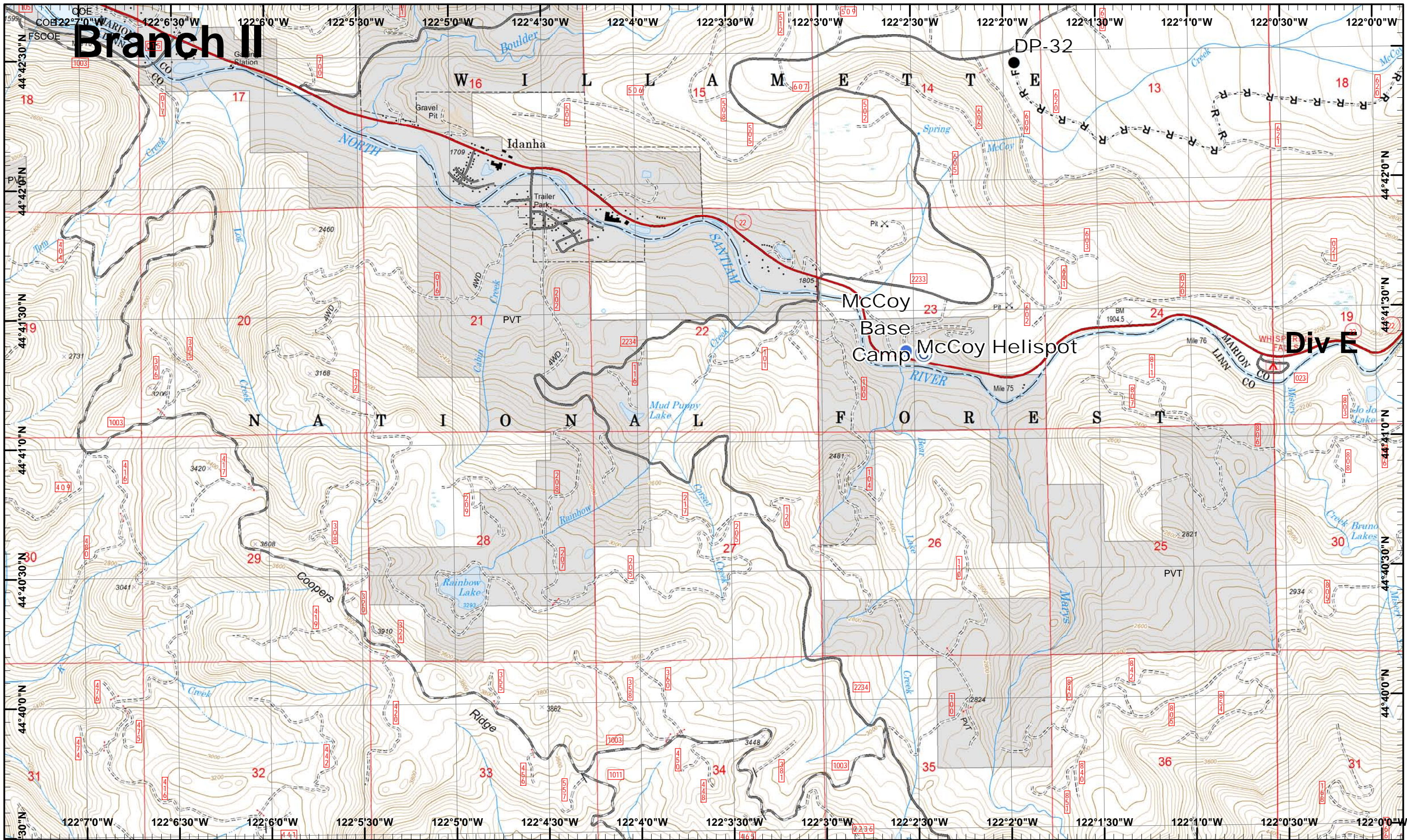
Dip Site  
 Fire Location  
 IR Heat Source  
 Water Source  
 Road as Line  
 Proposed Dozer  
 Drop Point  
 Lookout  
 Uncontrolled Fire



01	02	03
04	05	06
07	08	09
10	11	12
13	14	15

Page 09  
 ) Division  
 | Branch





**Branch II**

**Div E**

**Whitewater Incident**  
 September 11, 2017

IR © 9/5/2017 1943  
 Whitewater Fire - 10,934 Acres  
 Little Devil Fire - 1,598 Acres  
 French Fire - 2 Acres  
 Scorpion Fire - 606 Acres  
 Potato Hill Fire - 199 Acres  
 Map Created 9/10/2017 9:11:41 PM RDC



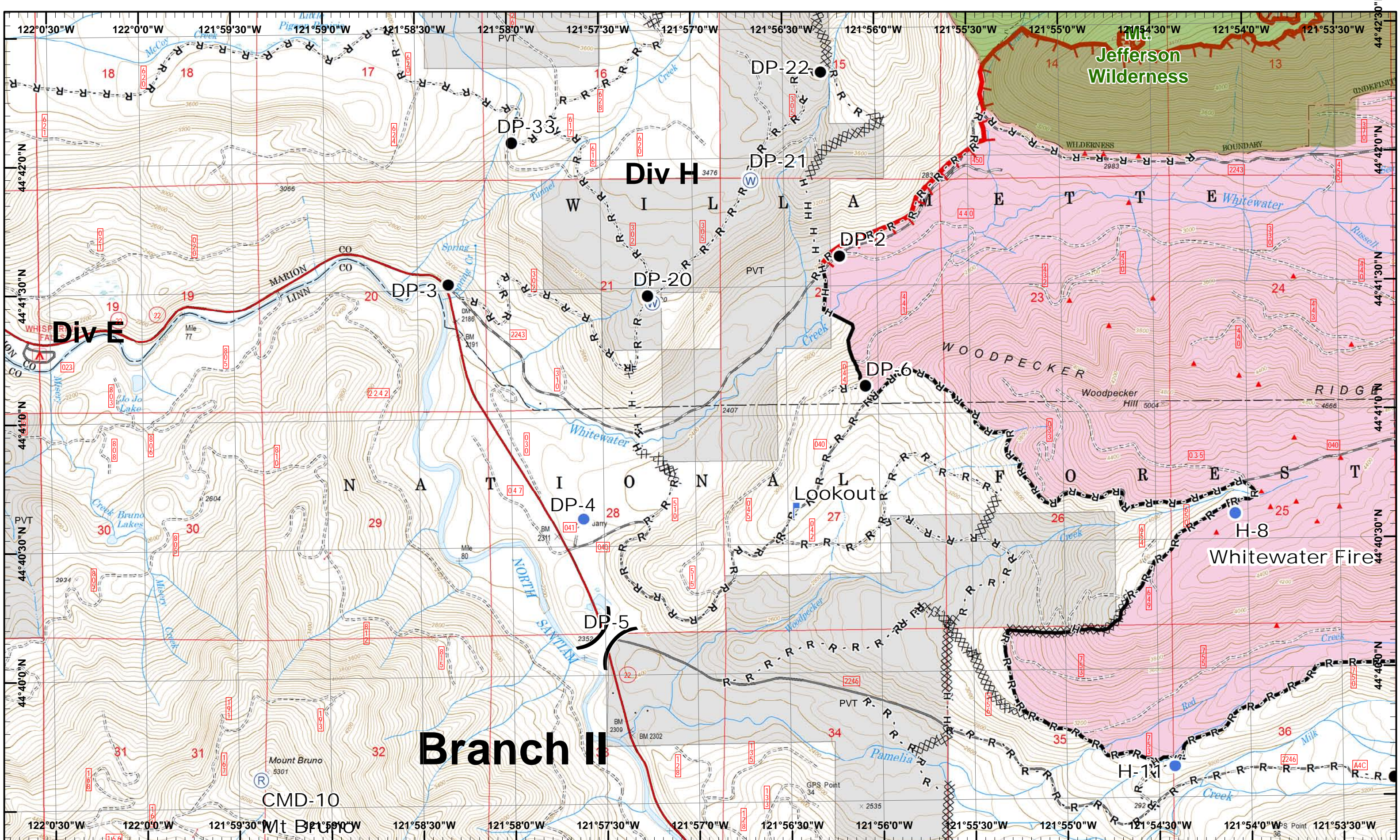
- Camp
- Drop Point
- R - Road as Line
- Helispot



01	02	03
04	05	06
07	08	09
10	11	12
13	14	15

Page 10  
 X Division  
 I Branch





**Whitewater Incident**  
 September 11, 2017

IR © 9/5/2017 1943  
 Whitewater Fire - 10,934 Acres  
 Little Devil Fire - 1,598 Acres  
 French Fire - 2 Acres  
 Scorpion Fire - 606 Acres  
 Potato Hill Fire - 199 Acres  
 Map Created 9/10/2017 9:12:10 PM RDC



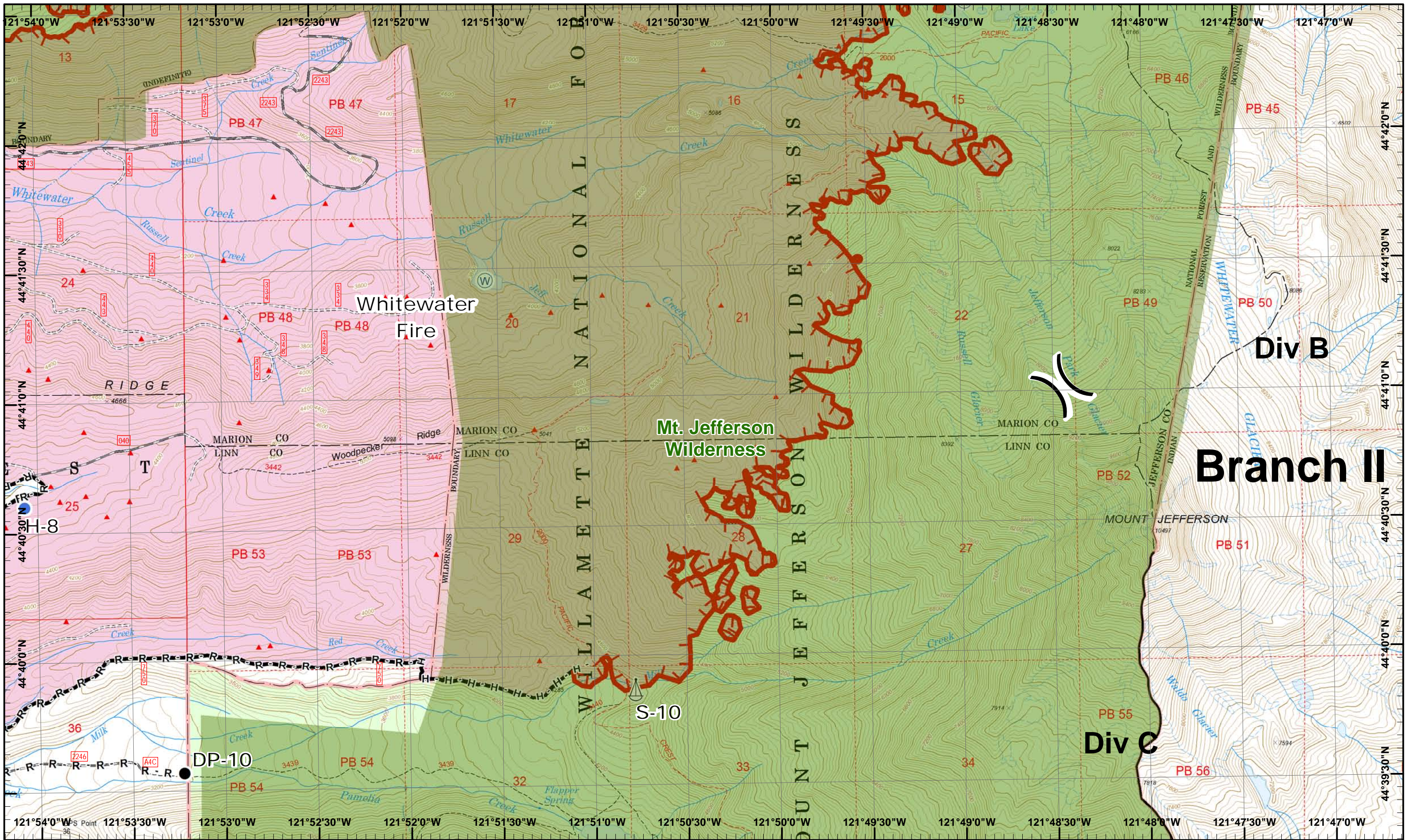
- Drop Point
- ▲ IR Heat Source
- Ⓡ Repeater
- Ⓜ Water Source
- Completed
- H - Completed Hand
- Helispot
- Ⓡ Lookout
- Ⓜ Uncontrolled Fire
- Ⓧ Completed Dozer
- R - Road as Line



01	02	03
04	05	06
07	08	09
10	11	12
13	14	15

Page 11  
 ( ) Division  
 [ ] Branch





**Whitewater Incident**  
 September 11, 2017

IR © 9/5/2017 1943  
 Whitewater Fire - 10,934 Acres  
 Little Devil Fire - 1,598 Acres  
 French Fire - 2 Acres  
 Scorpion Fire - 606 Acres  
 Potato Hill Fire - 199 Acres  
 Map Created 9/10/2017 9:12:37 PM RDC

- North
- Drop Point
- IR Heat Source
- Sling Site
- Water Source
- Completed
- Uncontrolled Fire
- R - Road as Line
- H - Completed Hand

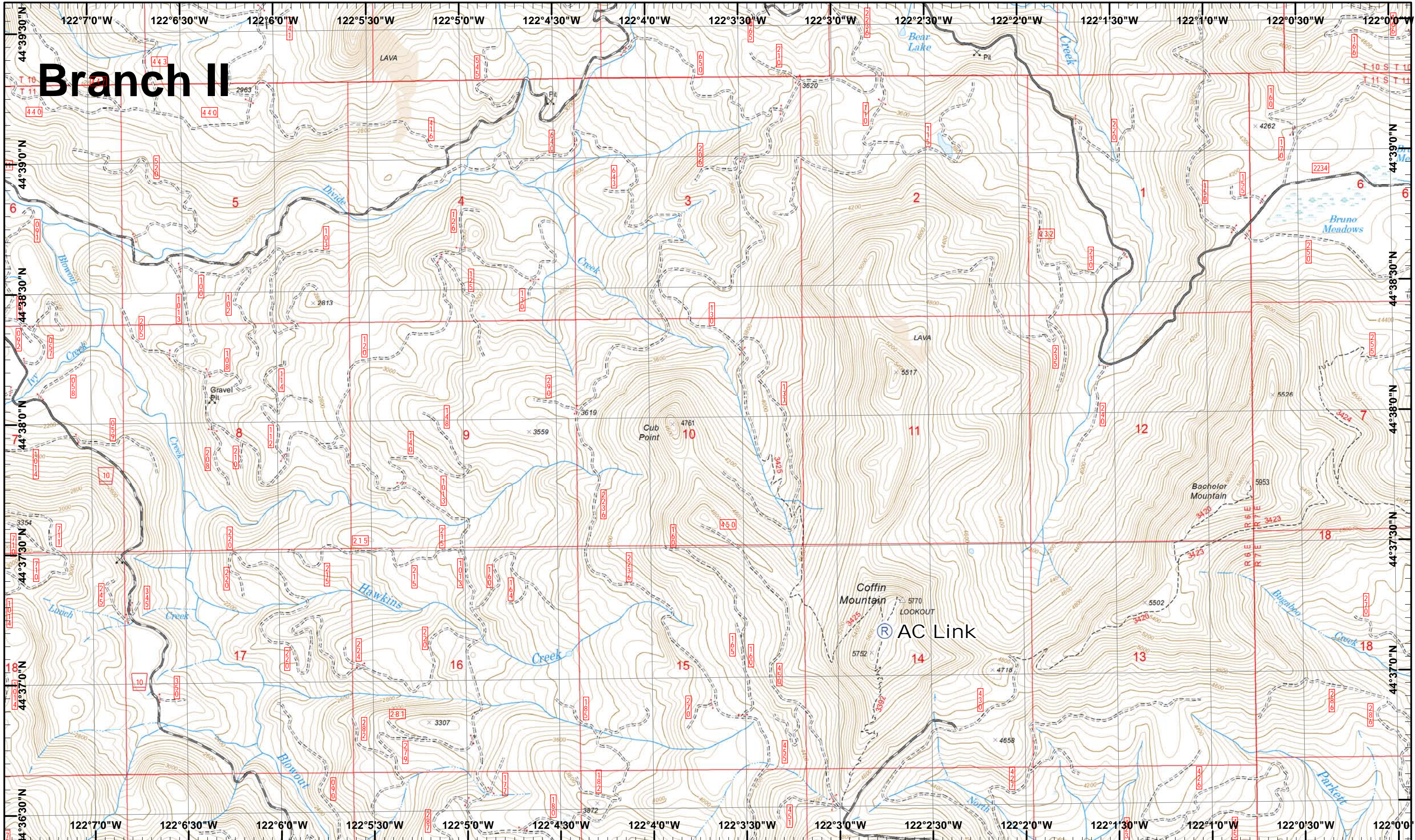


01	02	03
04	05	06
07	08	09
10	11	12
13	14	15

Page 12  
 ) Division  
 [ Branch



# Branch II



**Whitewater Incident**  
September 11, 2017

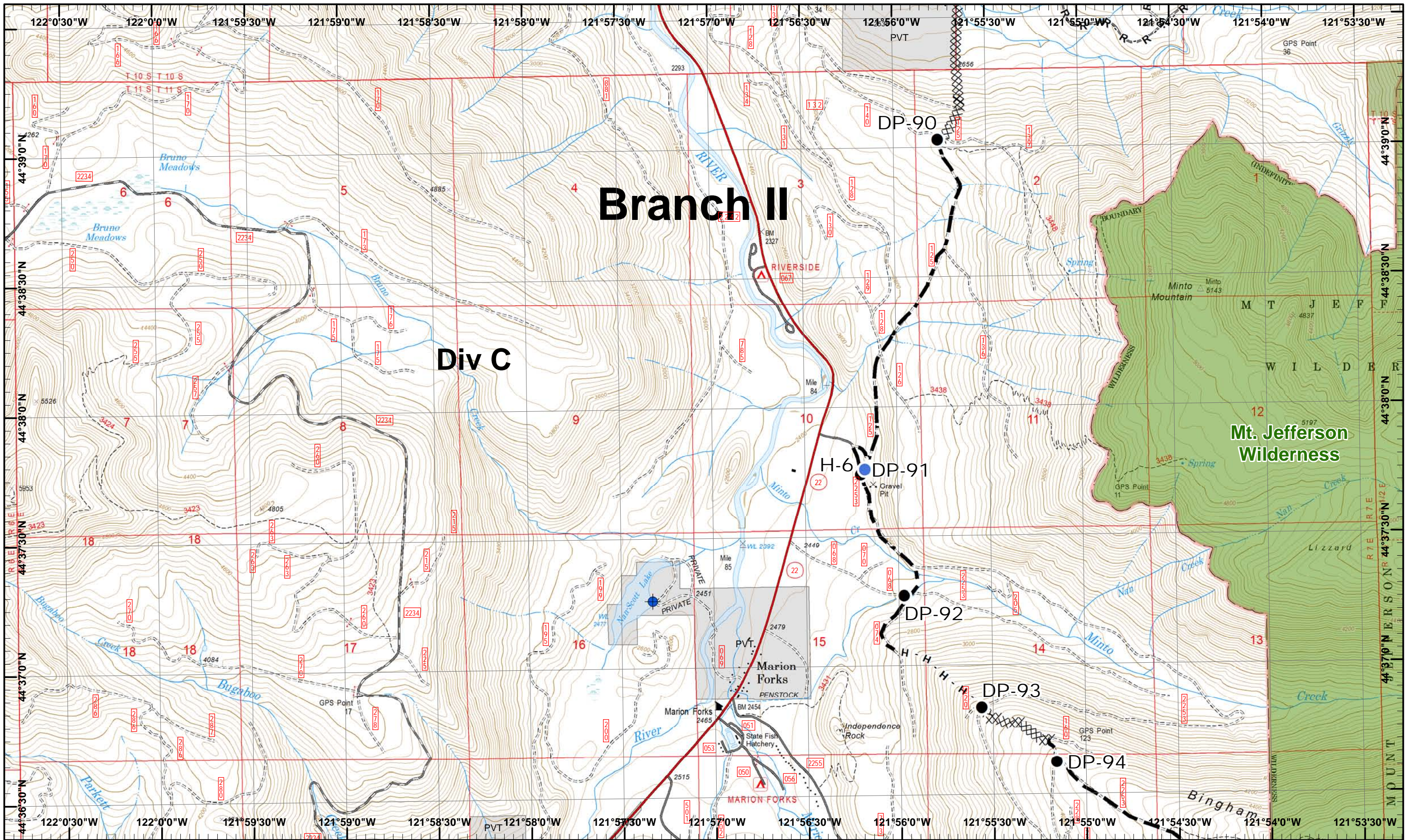
IR © 9/5/2017 1943  
Whitewater Fire - 10,934 Acres  
Little Devil Fire - 1,598 Acres  
French Fire - 2 Acres  
Scorpion Fire - 606 Acres  
Potato Hill Fire - 199 Acres  
Map Created 9/10/2017 9:13:03 PM RDC



01	02	03
04	05	06
07	08	09
10	11	12
13	14	15

Page 13  
X Division  
I Branch





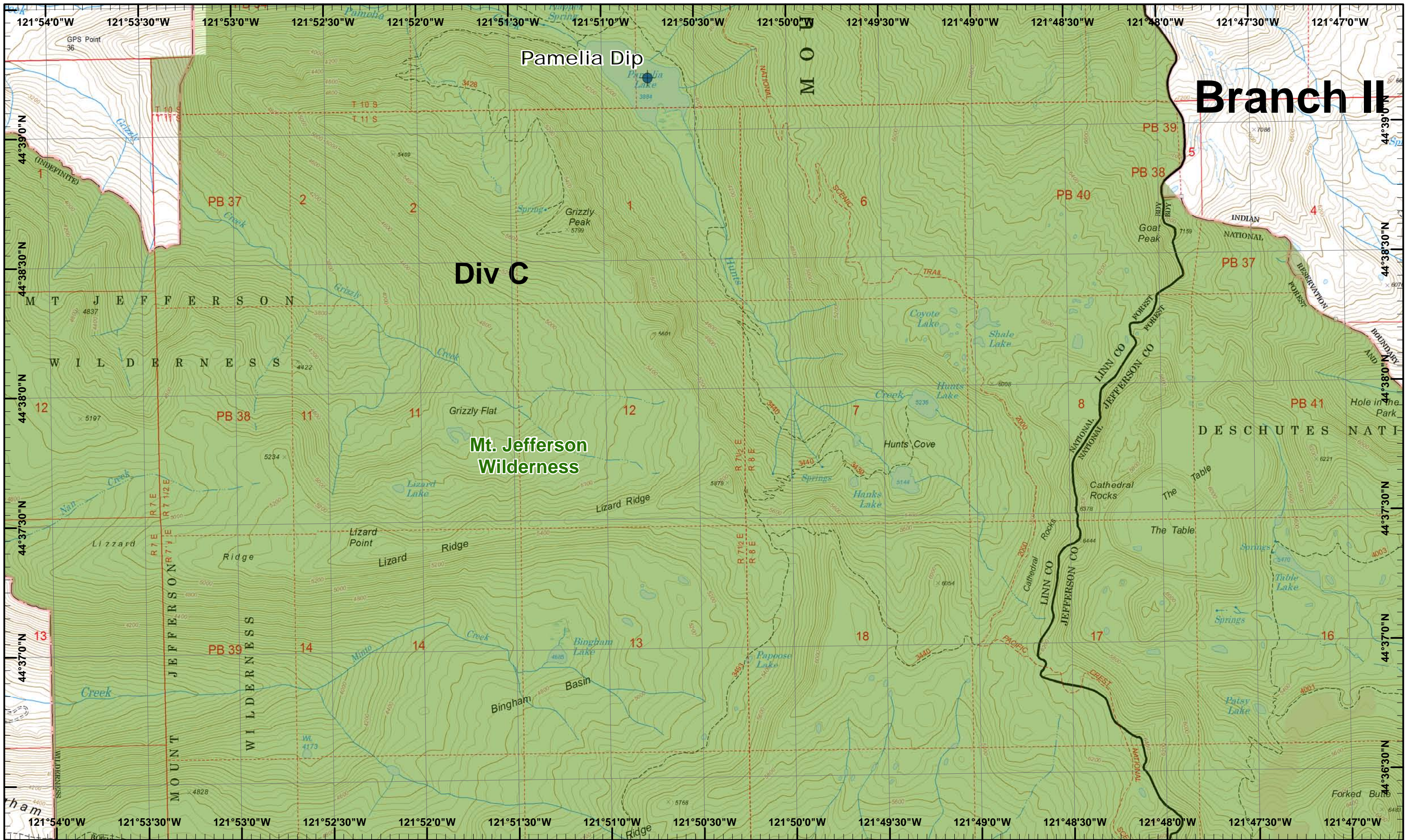
# Branch II

## Div C

### Mt. Jefferson Wilderness

01	02	03
04	05	06
07	08	09
10	11	12
13	14	15





**Whitewater Incident**  
 September 11, 2017

IR @ 9/5/2017 1943  
 Whitewater Fire - 10,934 Acres  
 Little Devil Fire - 1,598 Acres  
 French Fire - 2 Acres  
 Scorpion Fire - 606 Acres  
 Potato Hill Fire - 199 Acres



Map Created 9/10/2017 9:13:54 PM RCD

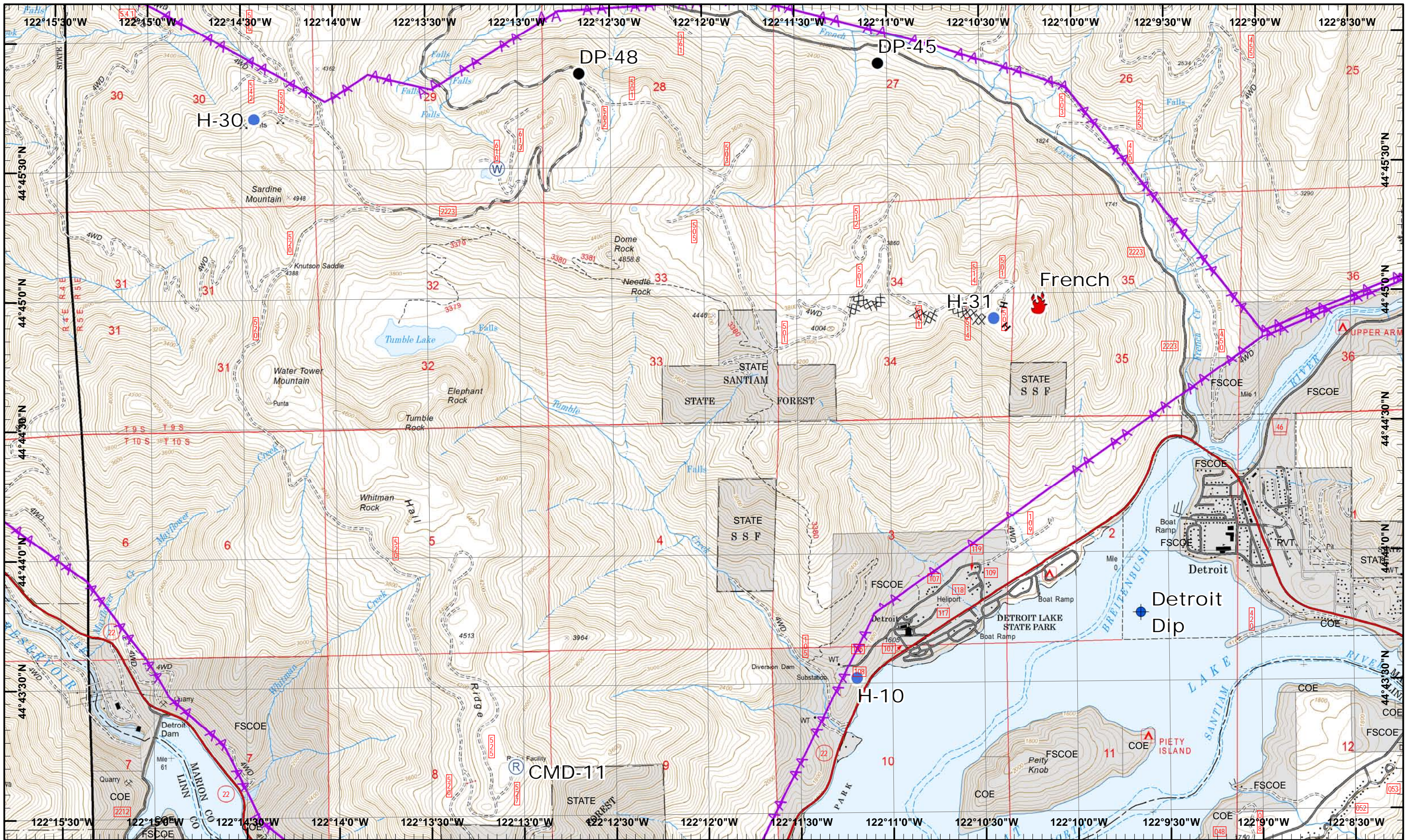


01	02	03
04	05	06
07	08	09
10	11	12
13	14	15

Page 15  
 ( ) Division  
 [ ] Branch







**Whitewater Incident**  
 September 11, 2017

IR @ 9/5/2017 1943  
 Whitewater Fire - 10,934 Acres  
 Little Devil Fire - 1,598 Acres  
 French Fire - 2 Acres  
 Scorpion Fire - 606 Acres  
 Potato Hill Fire - 199 Acres  
 Map Created 9/10/2017 9:14:23 PM RDC

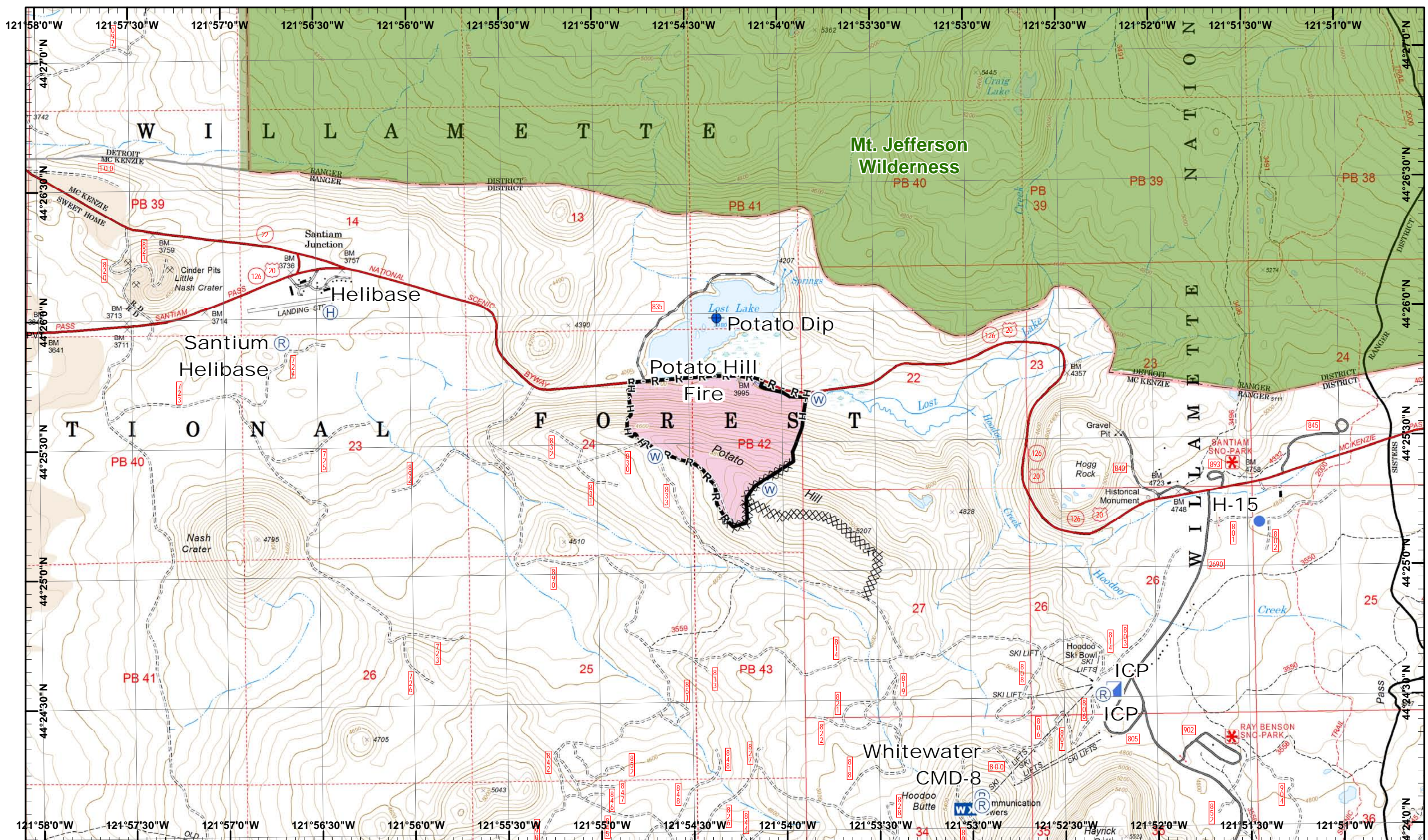
- Dip Site
- Fire Location
- Helispot
- Repeater
- Water Source
- Completed Dozer
- Powerline
- Drop Point
- H - Completed Hand



01	02	03
04	05	06
07	08	09
10	11	12
13	14	15

Page 16  
 ) Division  
 | Branch





**Whitewater Incident**  
 September 11, 2017

IR © 9/5/2017 1943  
 Whitewater Fire - 10,934 Acres  
 Little Devil Fire - 1,598 Acres  
 French Fire - 2 Acres  
 Scorpion Fire - 606 Acres  
 Potato Hill Fire - 199 Acres  
 Map Created 9/10/2017 9:14:48 PM RDC



- Dip Site
- Helibase
- Helispot
- Incident Command Post
- Repeater
- Water Source
- Completed Dozer
- Road as
- Mobile Weather
- Completed
- Completed Hand



01	02	03
04	05	06
07	08	09
10	11	12
13	14	15

Page 17  
 Division  
 Branch

