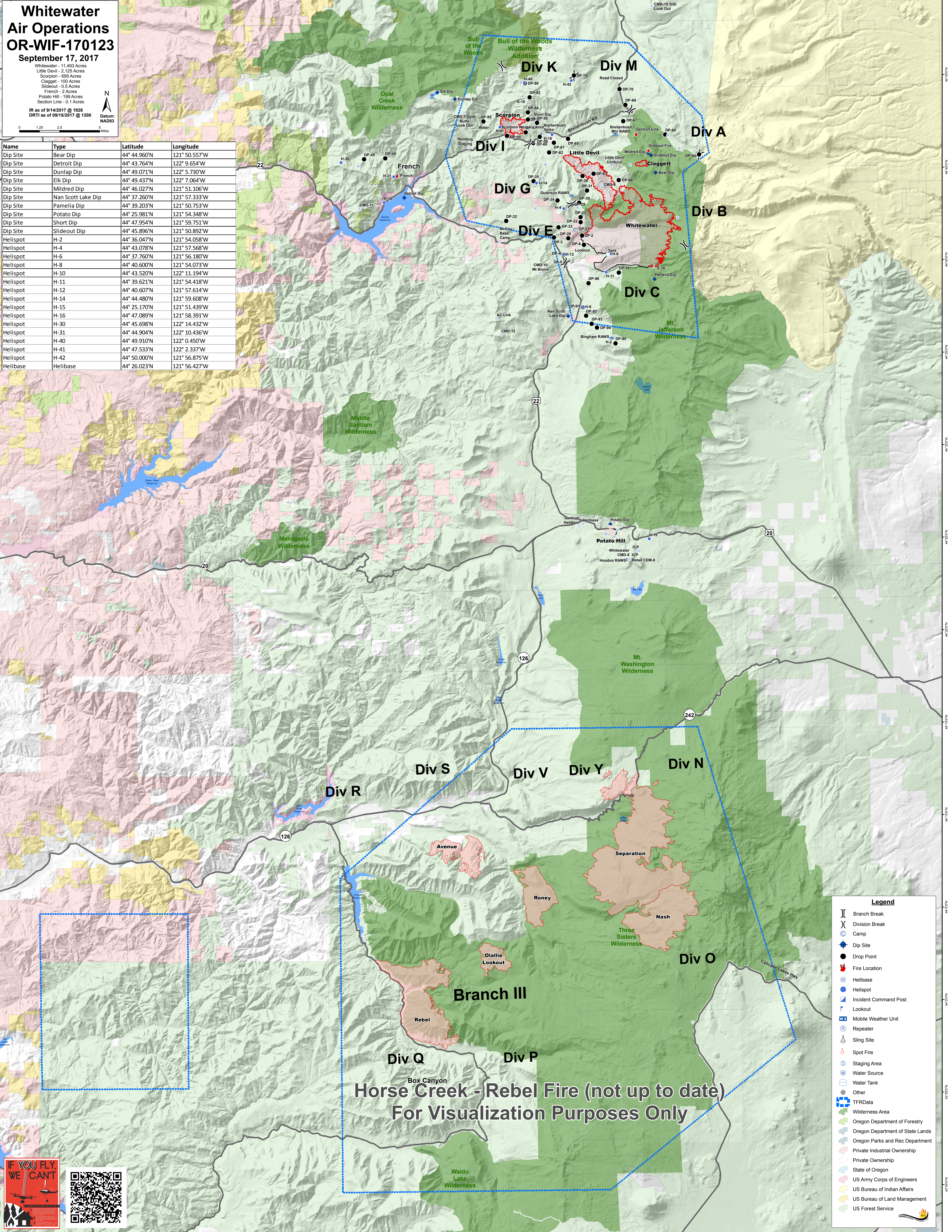


# Whitewater Air Operations OR-WIF-170123 September 17, 2017

Whitewater - 11,493 Acres  
 Little Devil - 2,125 Acres  
 Scorpion - 695 Acres  
 Claggett - 100 Acres  
 Slideout - 0.5 Acres  
 French - 2 Acres  
 Potato Hill - 199 Acres  
 Section Line - 0.1 Acres  
 IR as of 9/14/2017 @ 1928  
 DRTI as of 09/15/2017 @ 1200



Name	Type	Latitude	Longitude
Dip Site	Bear Dip	44° 44.960'N	121° 50.557'W
Dip Site	Detroit Dip	44° 43.764'N	122° 9.654'W
Dip Site	Dunlap Dip	44° 49.071'N	122° 5.730'W
Dip Site	Elk Dip	44° 49.437'N	122° 7.064'W
Dip Site	Mildred Dip	44° 46.027'N	121° 51.106'W
Dip Site	Nan Scott Lake Dip	44° 37.260'N	121° 57.333'W
Dip Site	Pamella Dip	44° 39.203'N	121° 50.753'W
Dip Site	Potato Dip	44° 25.981'N	121° 54.348'W
Dip Site	Short Dip	44° 47.954'N	121° 59.751'W
Dip Site	Slideout Dip	44° 45.896'N	121° 50.892'W
Helispot	H-2	44° 36.047'N	121° 54.058'W
Helispot	H-4	44° 43.078'N	121° 57.568'W
Helispot	H-6	44° 37.760'N	121° 56.180'W
Helispot	H-8	44° 40.600'N	121° 54.073'W
Helispot	H-10	44° 43.520'N	122° 11.194'W
Helispot	H-11	44° 39.621'N	121° 54.418'W
Helispot	H-12	44° 40.607'N	121° 57.614'W
Helispot	H-14	44° 44.480'N	121° 59.608'W
Helispot	H-15	44° 25.170'N	121° 51.439'W
Helispot	H-16	44° 47.089'N	121° 58.391'W
Helispot	H-30	44° 45.698'N	122° 14.432'W
Helispot	H-31	44° 44.904'N	122° 10.436'W
Helispot	H-40	44° 49.910'N	122° 0.450'W
Helispot	H-41	44° 47.533'N	122° 2.337'W
Helispot	H-42	44° 50.000'N	121° 56.875'W
Helibase	Helibase	44° 26.023'N	121° 56.427'W



Horse Creek - Rebel Fire (not up to date)  
 For Visualization Purposes Only

**Legend**

- Branch Break
- Division Break
- Camp
- Dip Site
- Drop Point
- Fire Location
- Helibase
- Helispot
- Incident Command Post
- Lookout
- Mobile Weather Unit
- Repeater
- Sling Site
- Spot Fire
- Staging Area
- Water Source
- Water Tank
- Other
- TFRData
- Wilderness Area
- Oregon Department of Forestry
- Oregon Department of State Lands
- Oregon Parks and Rec Department
- Private Industrial Ownership
- Private Ownership
- State of Oregon
- US Army Corps of Engineers
- US Bureau of Indian Affairs
- US Bureau of Land Management
- US Forest Service

