

Whitewater Fire

Repair Plan Maps

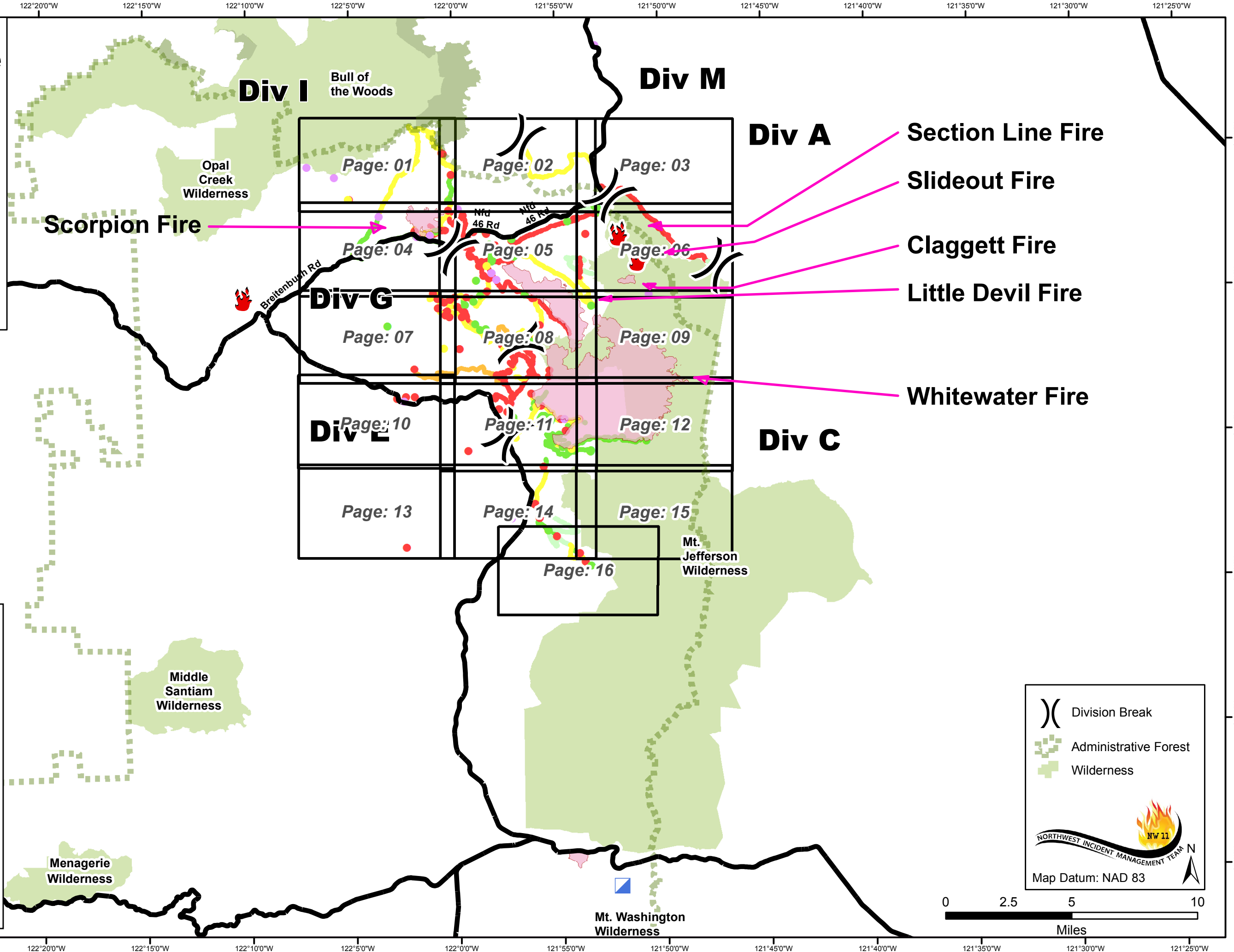
September 26, 2017

Acres:
Whitewater - 11,493
Little Devil - 2,162
Scorpion - 695
Claggett - 100
Slideout - 0.5
Section Line - 0.1



Repair Legend

- Completed - Inspected
 - Completed - Ready for Inspection
 - In Progress
 - Repair Needed
 - No Repair Needed
 - Other - See Comments
 - Unknown
-
- Completed - Inspected
 - Completed - Ready for Inspection
 - In Progress
 - Repair Needed
 - No Repair Needed
 - Other - See Comments
 - Unknown



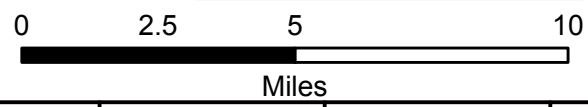
- Section Line Fire
- Slideout Fire
- Claggett Fire
- Little Devil Fire
- Whitewater Fire

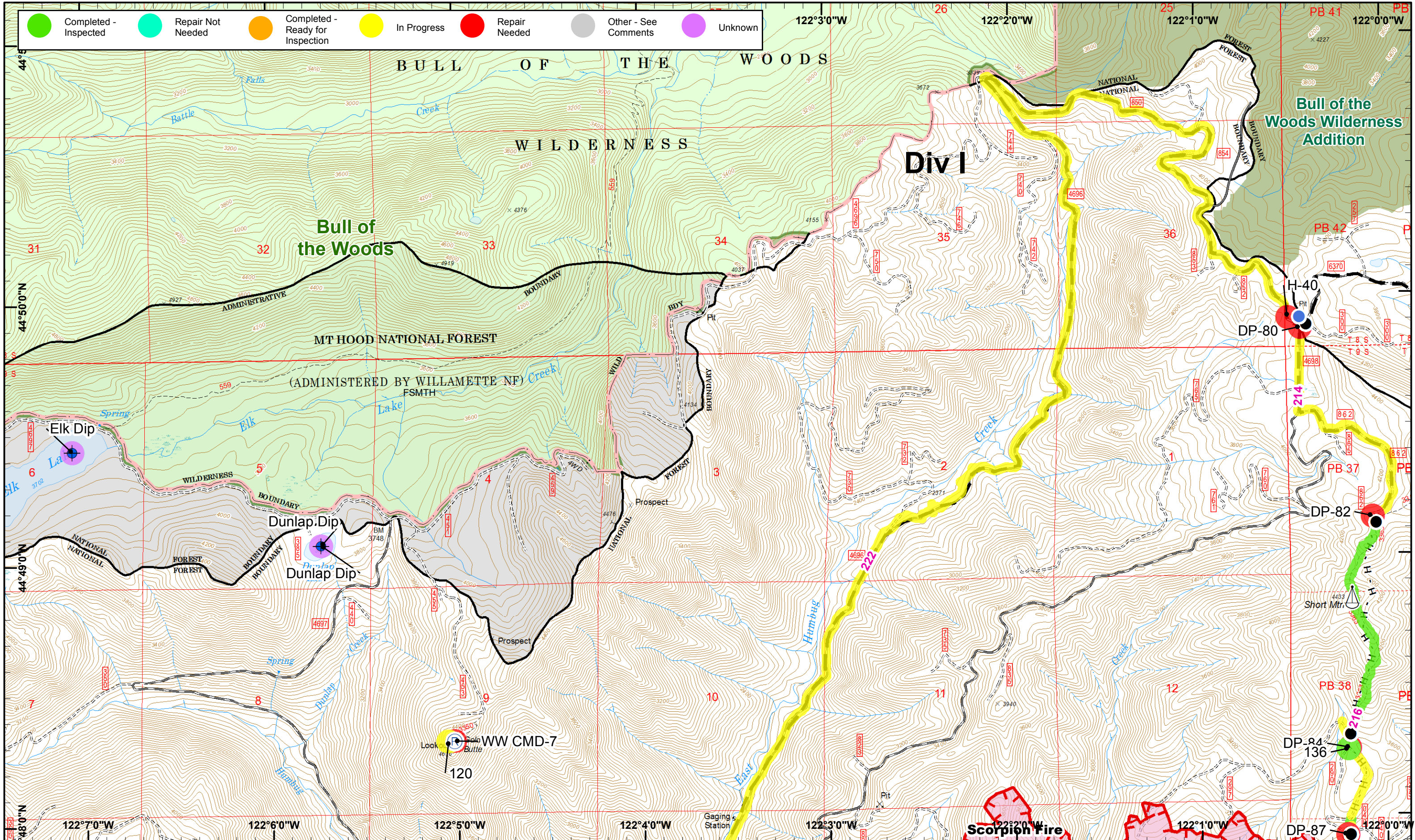
Division Break

Administrative Forest

Wilderness

Map Datum: NAD 83





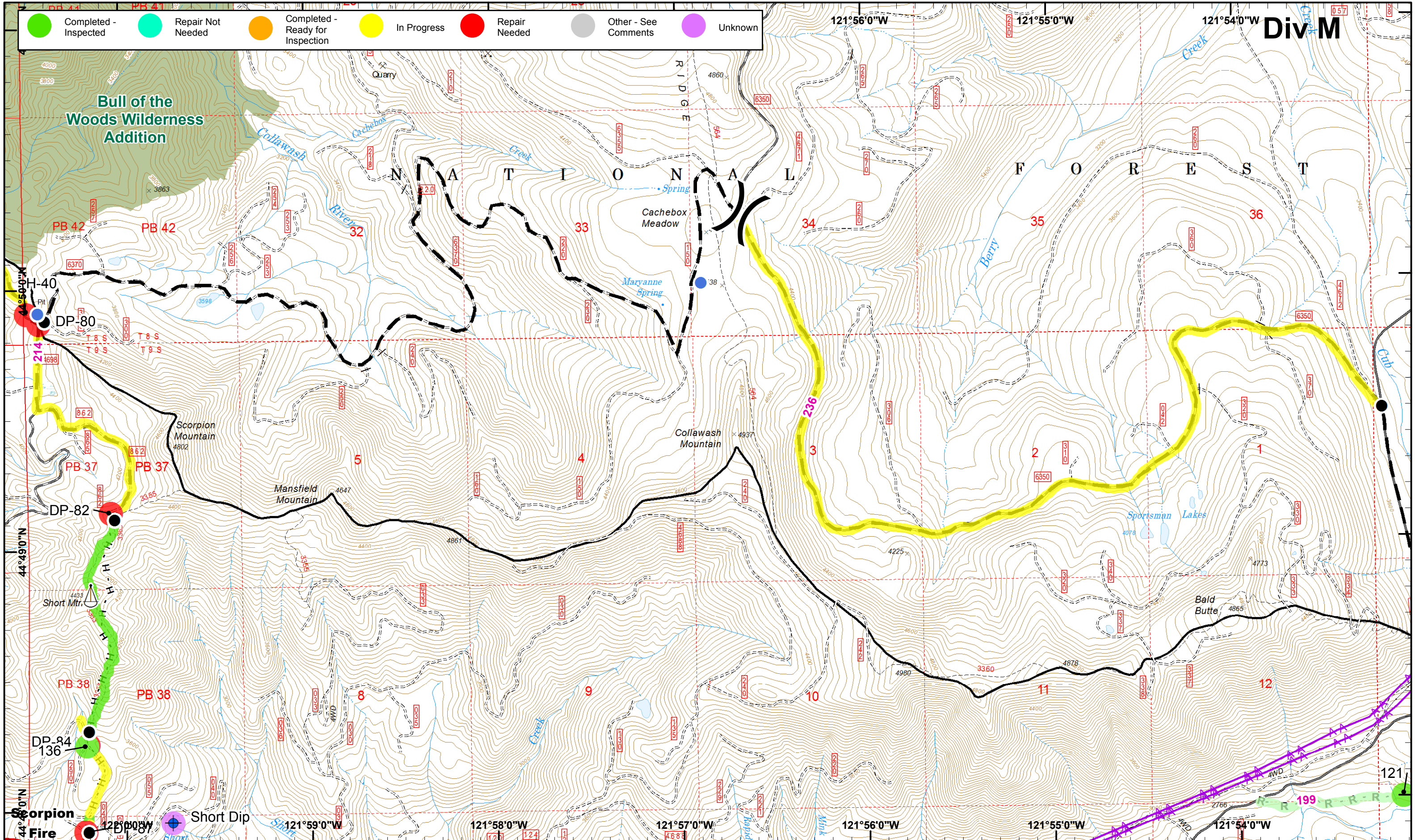
- Dip Site
- Helispot
- Sling Site
- H - Completed Hand
- Drop Point
- R Repeater
- Planned Fire Line
- Uncontrolled Fire
- Completed Dozer

01	02	03
04	05	06
07	08	09
10	11	12
13	14	15
16		



● Completed - Inspected
 ● Repair Not Needed
 ● Completed - Ready for Inspection
 ● In Progress
 ● Repair Needed
 ● Other - See Comments
 ● Unknown

Div M



Whitewater Repair Plan
 September 26, 2017
 IR @ 9/14/2017 1928
 DRTI @ 09/15/2017 1200

0 0.25 0.5 Miles
 Map Datum: NAD 83
 Map Created 9/25/2017 8:55:06 PM RDC

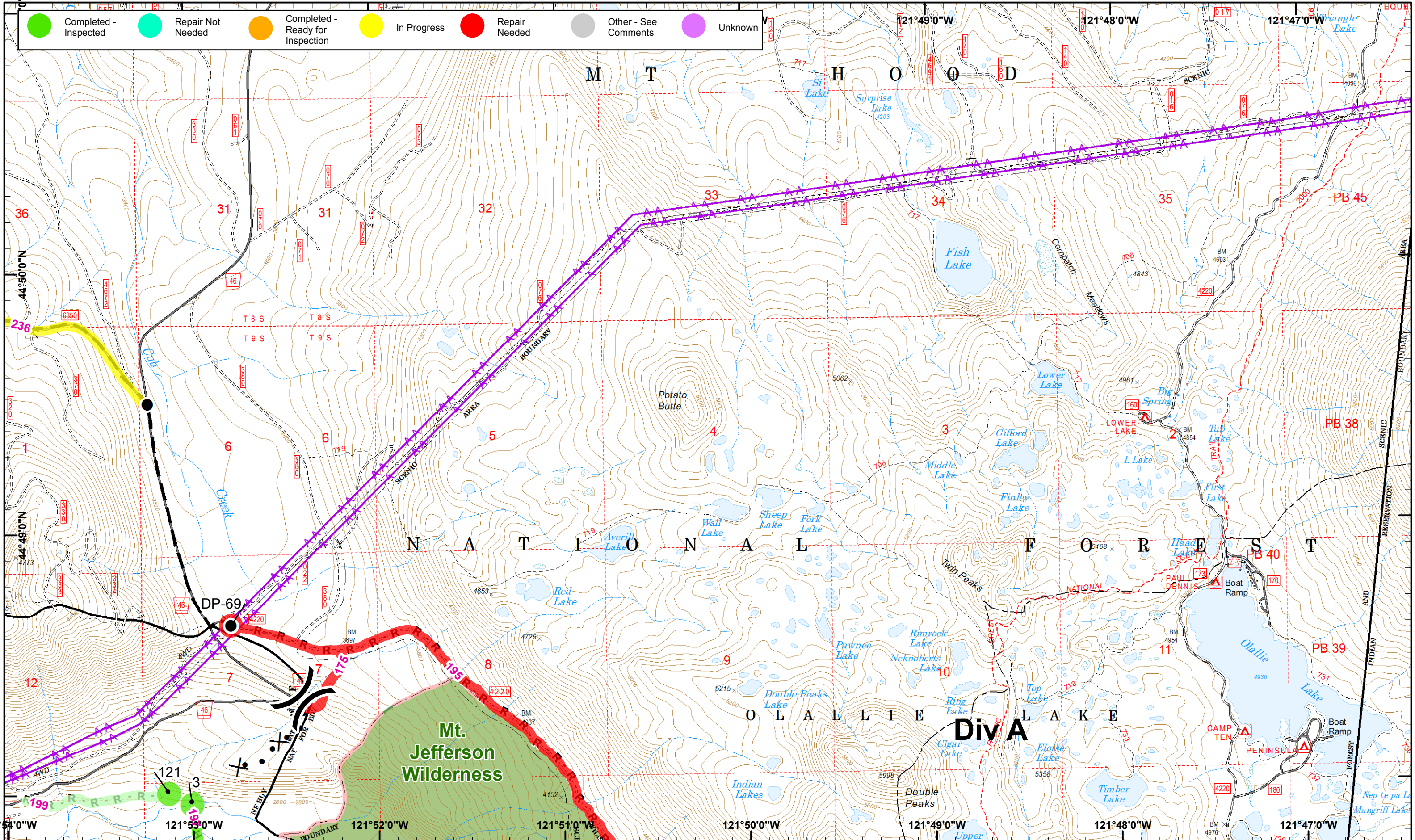


● Dip Site
 ● Helispot
 XXXX Completed Dozer R - Road as Line
 - - - - Planned Fire Line
 - - - - Powerline
● Drop Point
 Sling Site
 H - Completed Hand
▭ Uncontrolled Fire

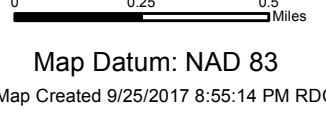
01	02	03
04	05	06
07	08	09
10	11	12
13	14	15
16		



● Completed - Inspected
 ● Repair Not Needed
 ● Completed - Ready for Inspection
 ● In Progress
 ● Repair Needed
 ● Other - See Comments
 ● Unknown



Whitewater Repair Plan
 September 26, 2017
 IR @ 9/14/2017 1928
 DRTI @ 09/15/2017 1200



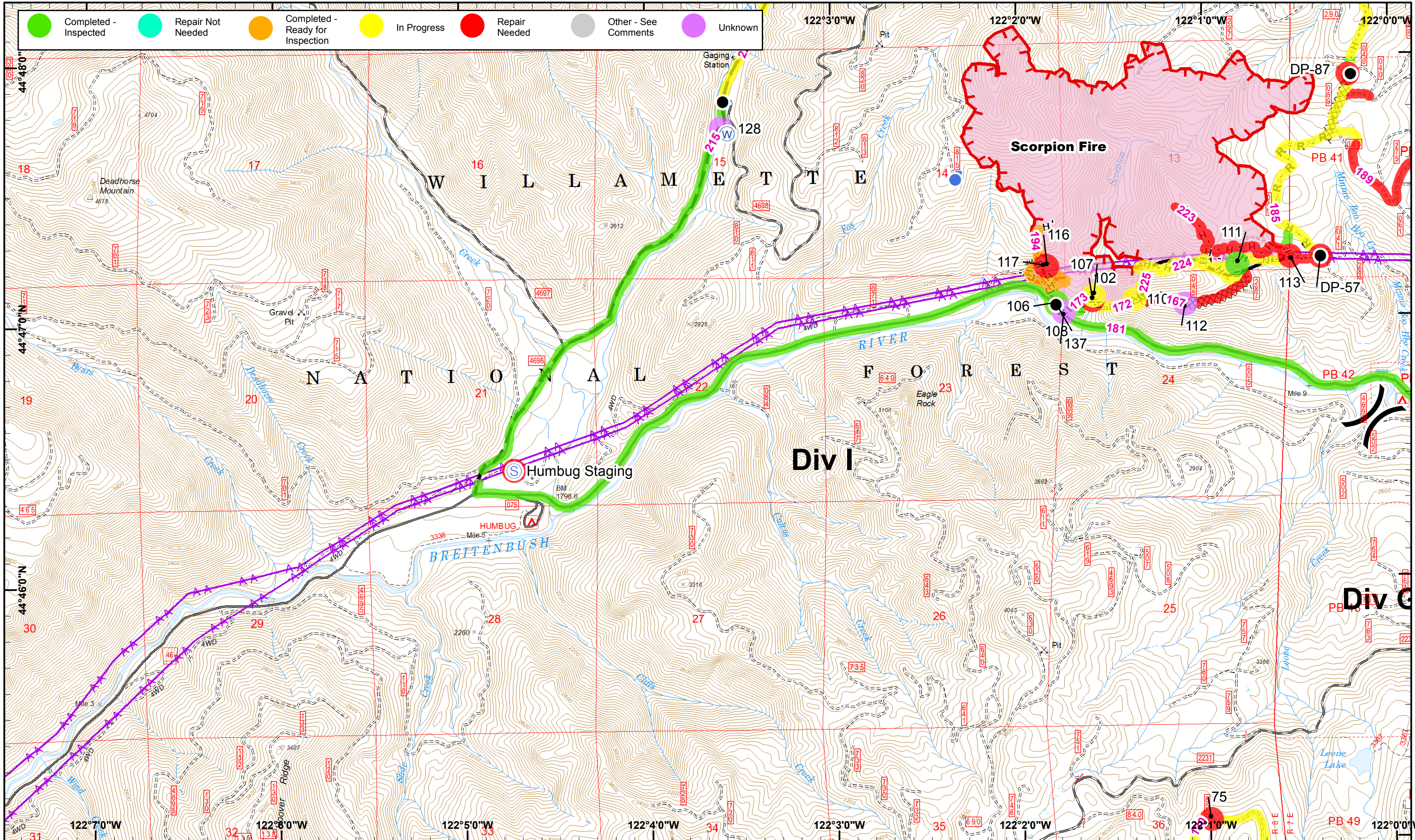
- Drop Point
- R - Road as Line
- Planned Fire Line
- H - Completed Hand
- Proposed Dozer
- ▲ Powerline



01	02	03
04	05	06
07	08	09
10	11	12
13	14	15
16		



● Completed - Inspected
 ● Repair Not Needed
 ● Completed - Ready for Inspection
 ● In Progress
 ● Repair Needed
 ● Other - See Comments
 ● Unknown

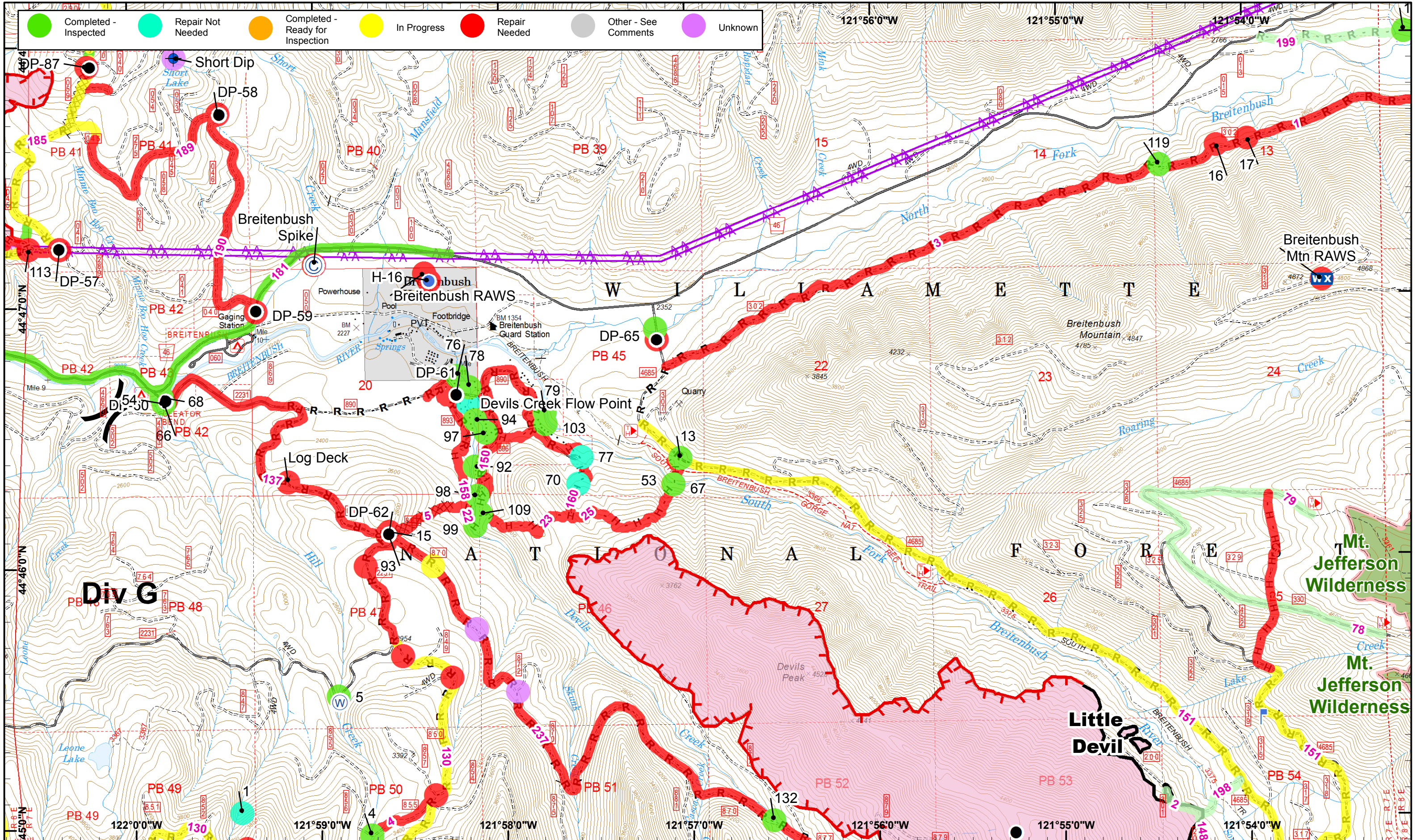


0 0.25 0.5 Miles
 Map Datum: NAD 83
 Map Created 9/25/2017 8:55:22 PM RDC

● Drop Point
 ■ Lookout
 ⊙ Water Source
 H - Completed Hand
 — Planned Fire Line
 — Powerline
● Helispot
 ⊙ Staging Area
 XXXX Completed Dozer
 R - Road as Line
 — Uncontrolled Fire
 — Completed

01	02	03
04	05	06
07	08	09
10	11	12
13	14	15
16		

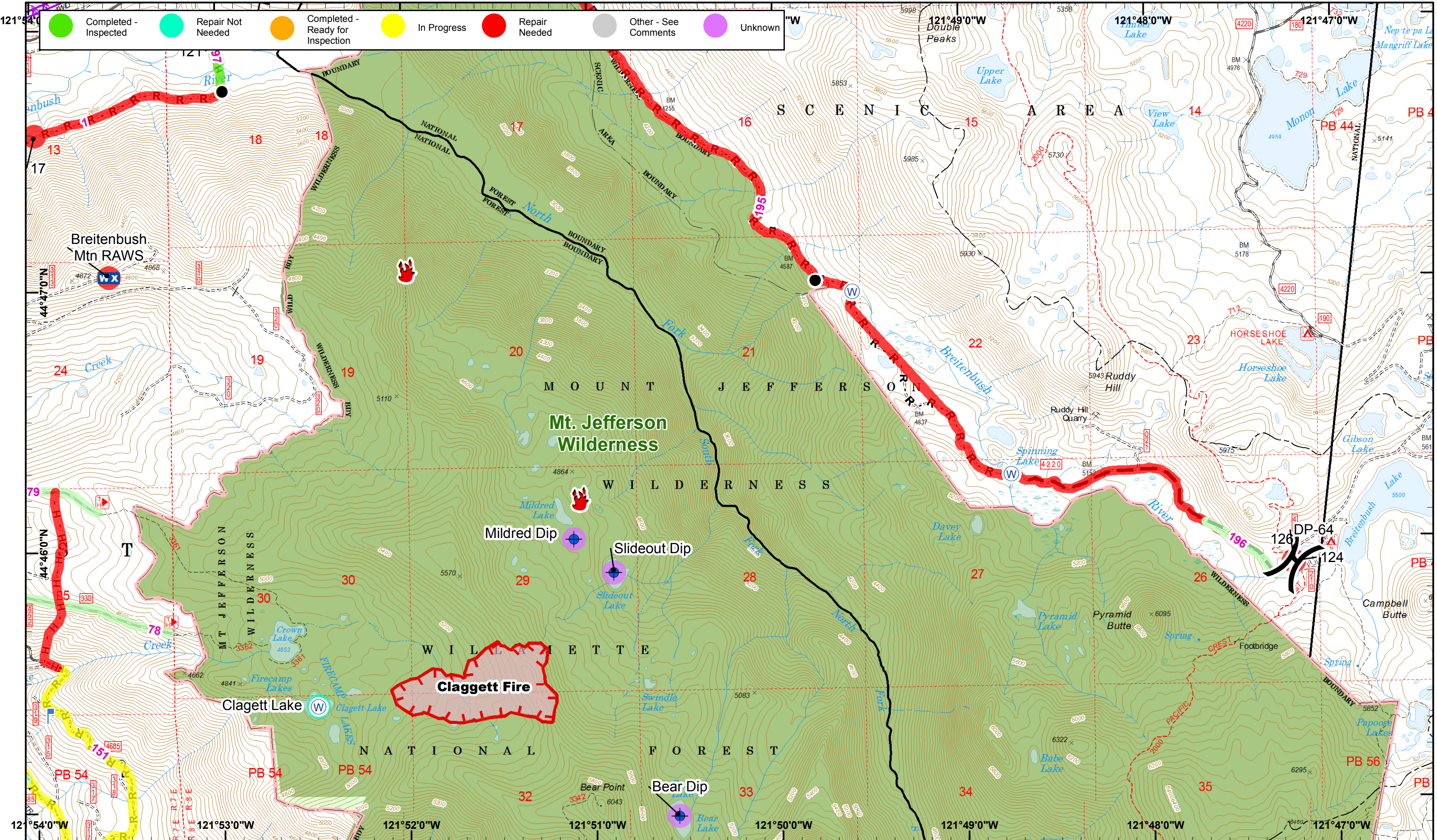




- © Camp
- Drop Point
- ⌚ Lookout
- Ⓜ Water Source
- Ⓜ Completed Hand
- Ⓜ Uncontrolled Fire
- Ⓜ Dip Site
- Helispot
- Ⓜ Mobile Weather
- Ⓜ Completed Dozer
- Ⓜ Road as Line
- Ⓜ Completed
- Ⓜ Powerline

01	02	03
04	05	06
07	08	09
10	11	12
13	14	15
16		





● Completed - Inspected
 ● Repair Not Needed
 ● Completed - Ready for Inspection
 ● In Progress
 ● Repair Needed
 ● Other - See Comments
 ● Unknown

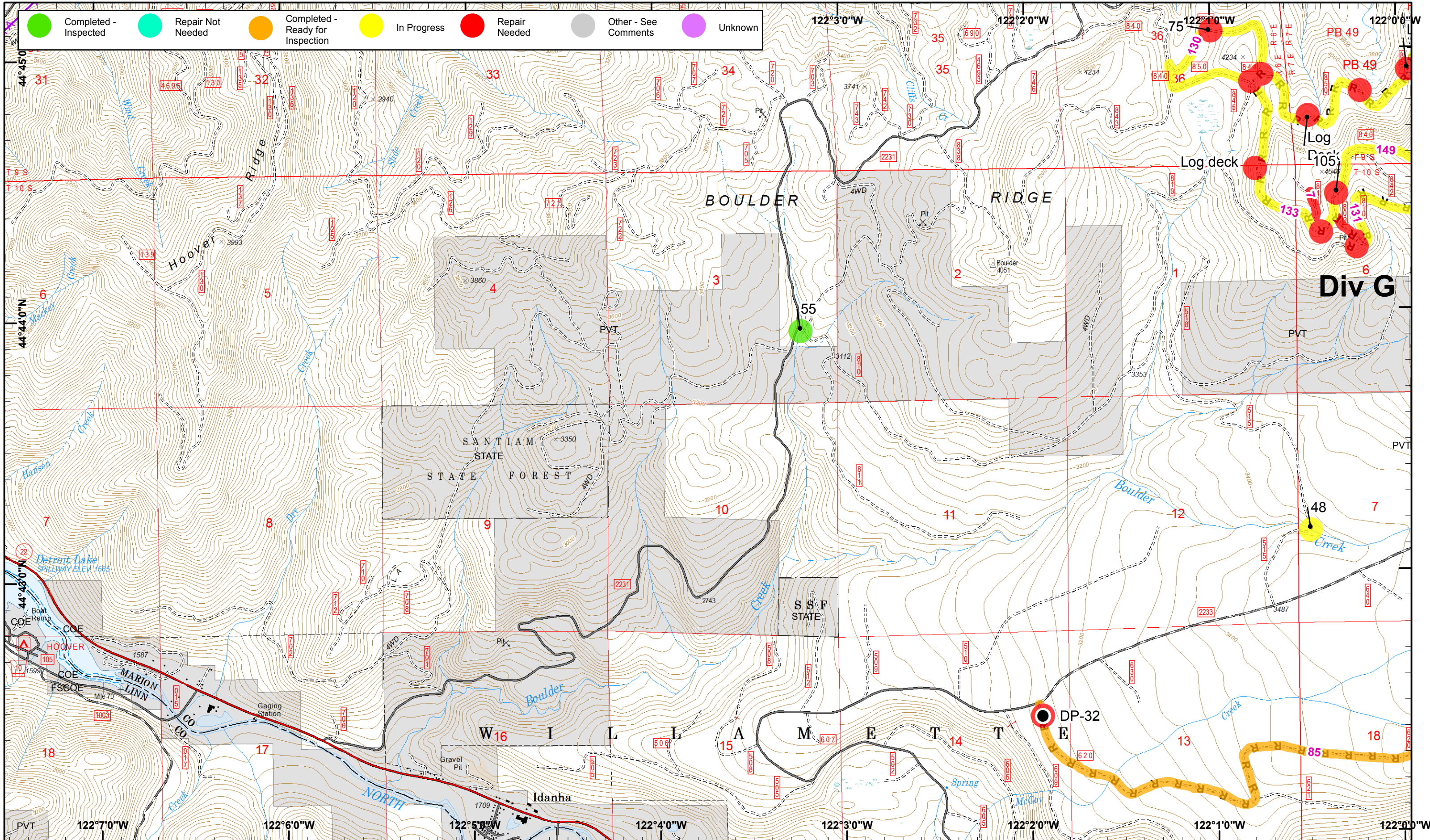


⊕ Dip Site
 🔥 Fire Location
 ⏏ Lookout
 Ⓜ Water Source
 R - Road as Line
 ▬▬ Planned Fire Line
 ▬▬ Uncontrolled Fire
 ● Drop Point
 WX Mobile Weather
 H - Completed Hand
 ● Proposed Dozer
 ⚡ Powerline

0 0.25 0.5 Miles
 Map Datum: NAD 83
 Map Created 9/25/2017 8:55:43 PM RDC

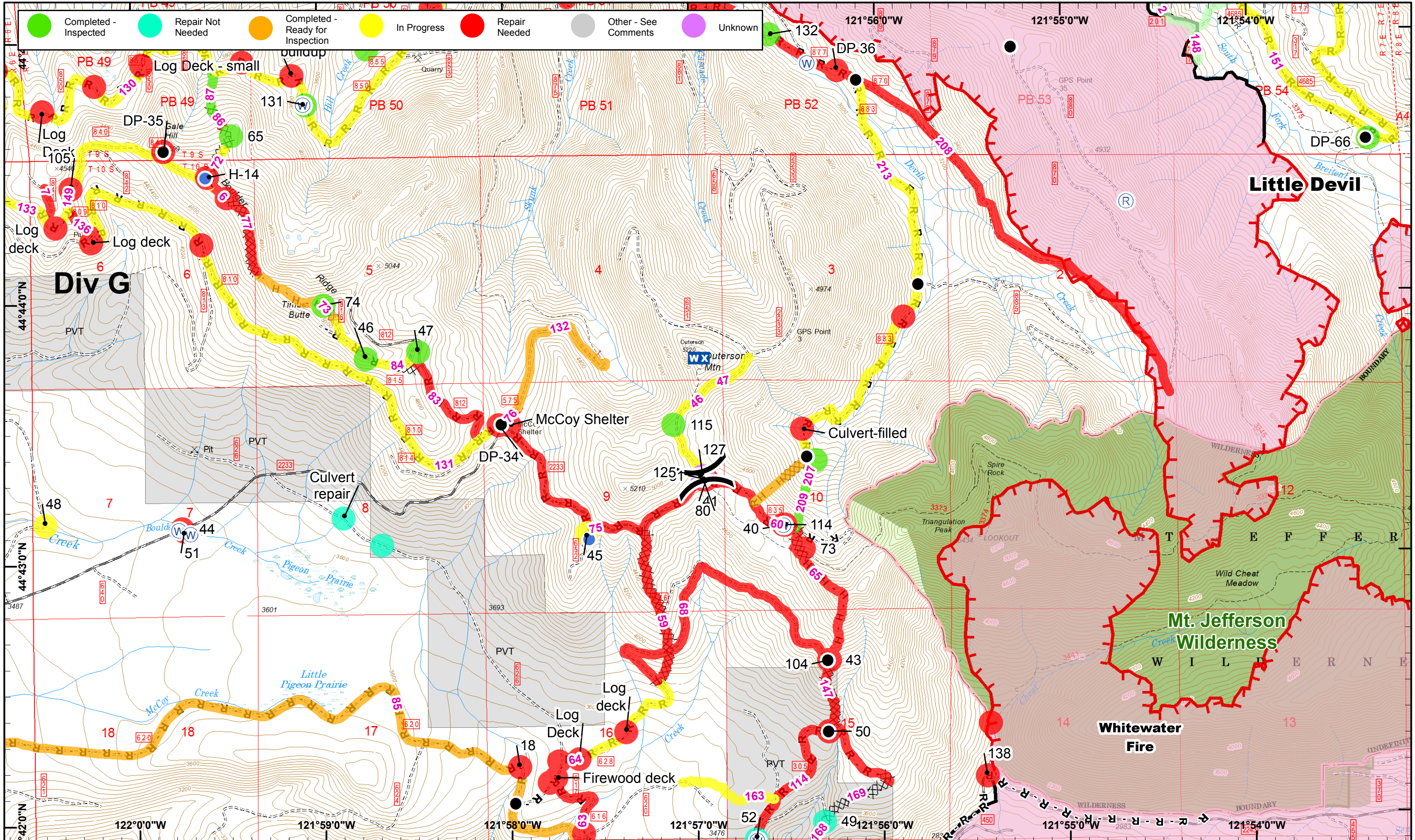
01	02	03
04	05	06
07	08	09
10	11	12
13	14	15
	16	





01	02	03
04	05	06
07	08	09
10	11	12
13	14	15
16		



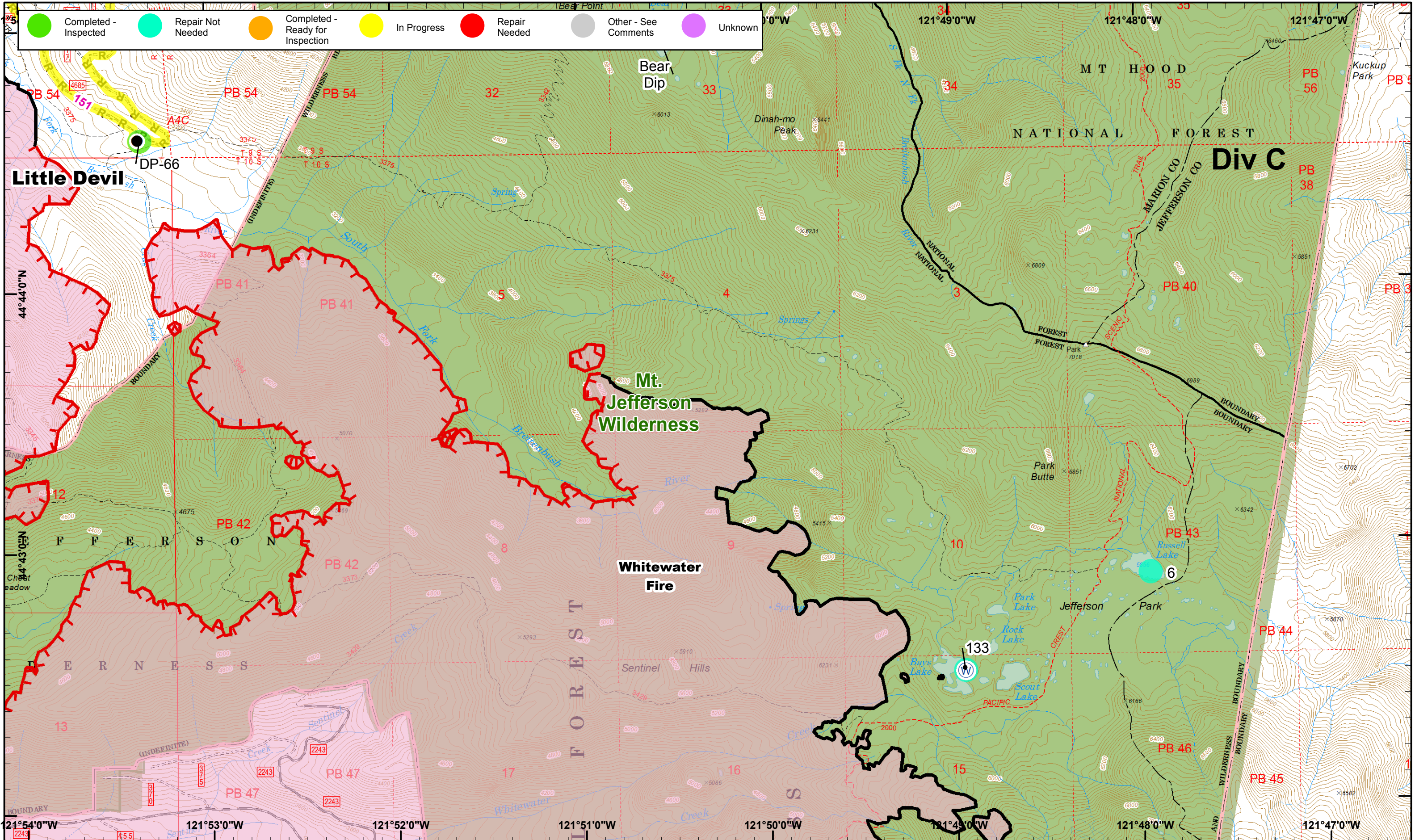


- Drop Point
- Ⓡ Repeater
- XXXX Completed Dozer R - Road as Line
- Helispot
- Ⓢ Water Source
- H - Completed Hand
- Uncontrolled Fire
- Completed
- WX Mobile Weather

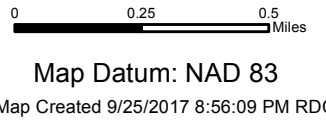
01	02	03
04	05	06
07	08	09
10	11	12
13	14	15
16		



● Completed - Inspected
 ● Repair Not Needed
 ● Completed - Ready for Inspection
 ● In Progress
 ● Repair Needed
 ● Other - See Comments
 ● Unknown



Whitewater Repair Plan
 September 26, 2017
 IR @ 9/14/2017 1928
 DRTI @ 09/15/2017 1200



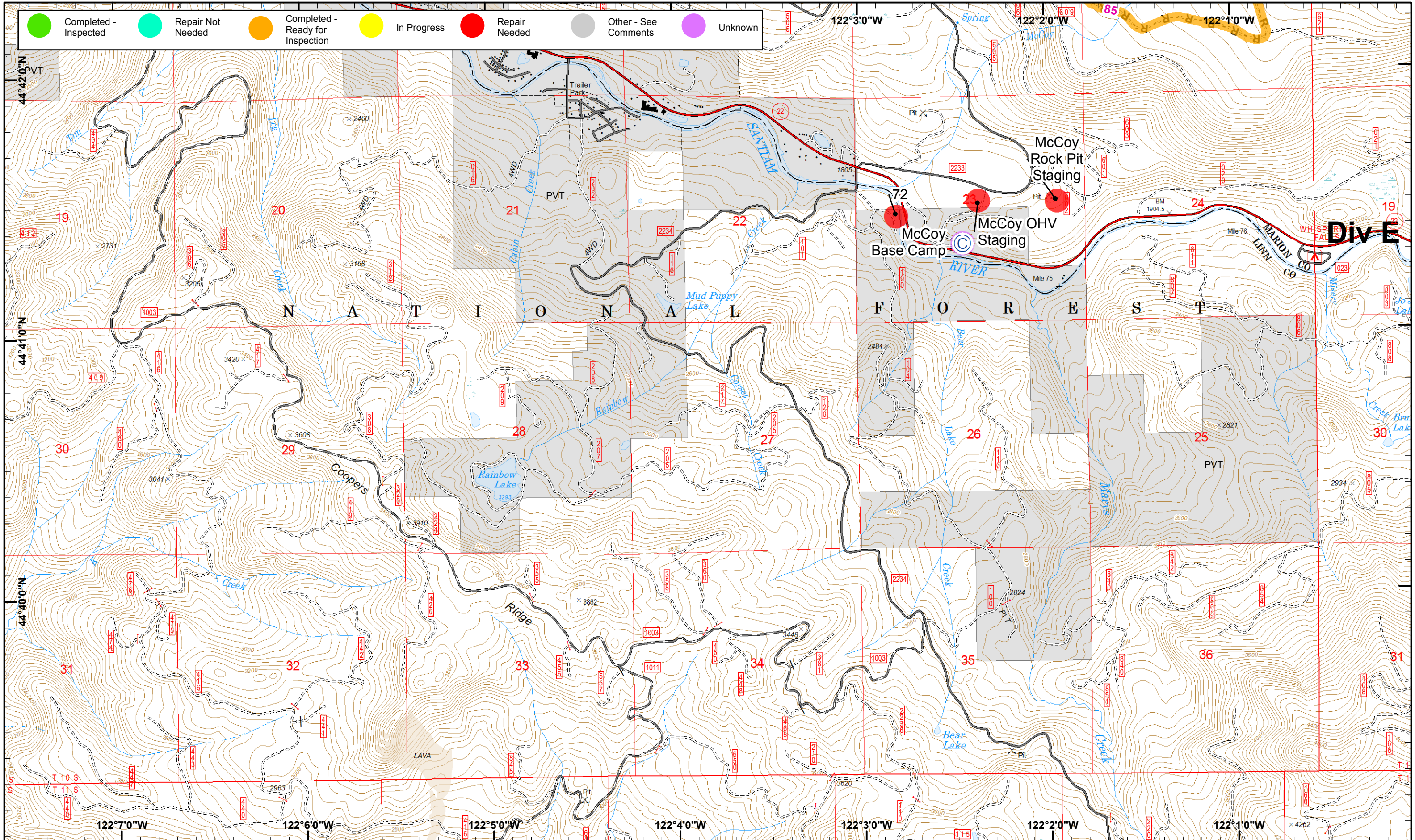
- ⊕ Dip Site ⊕ Water Source --- Uncontrolled Fire
- Drop Point — Completed
- R - Road as Line



01	02	03
04	05	06
07	08	09
10	11	12
13	14	15
16		



● Completed - Inspected
 ● Repair Not Needed
 ● Completed - Ready for Inspection
 ● In Progress
 ● Repair Needed
 ● Other - See Comments
 ● Unknown



Div E



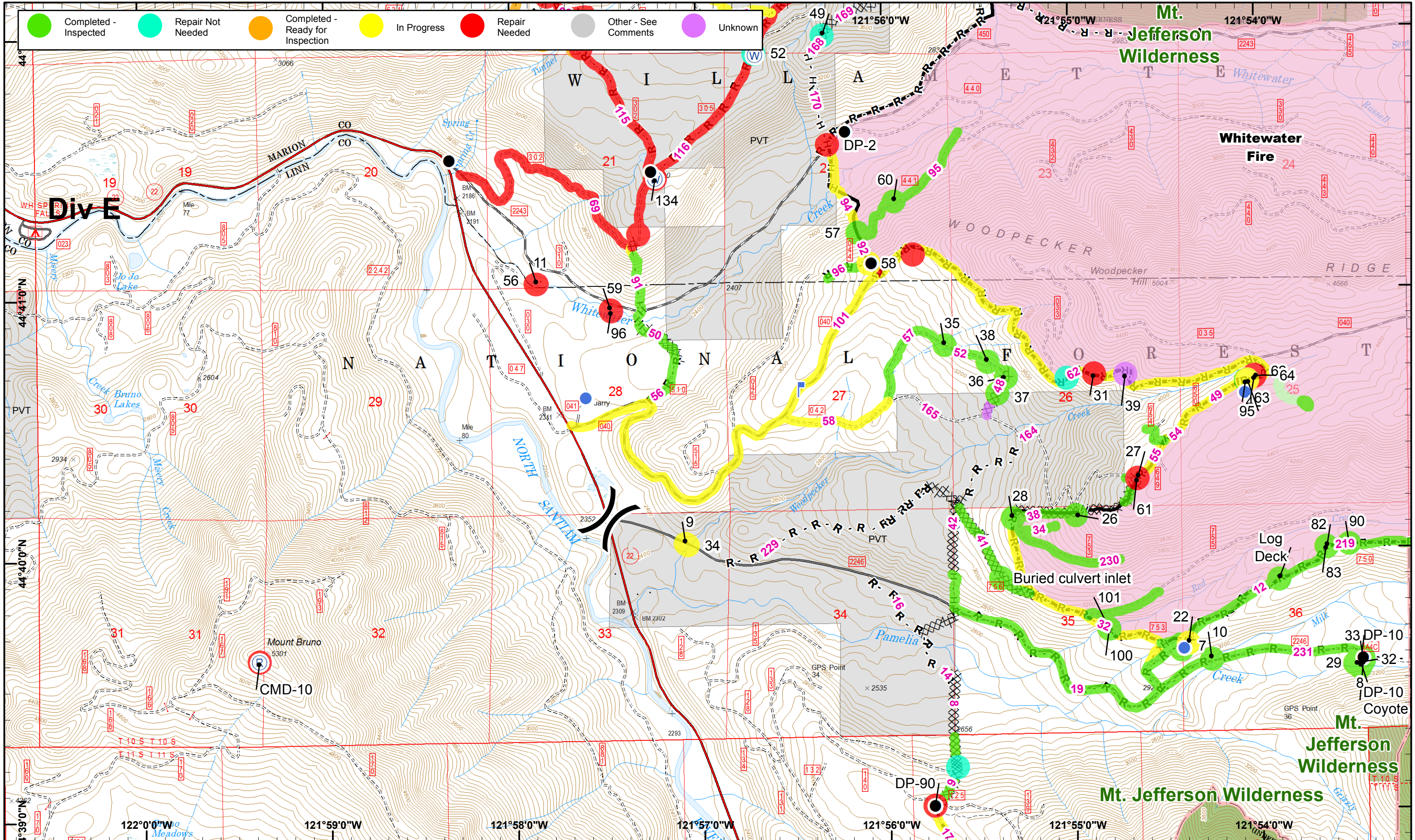
© Camp

R - Road as Line



01	02	03
04	05	06
07	08	09
10	11	12
13	14	15
16		

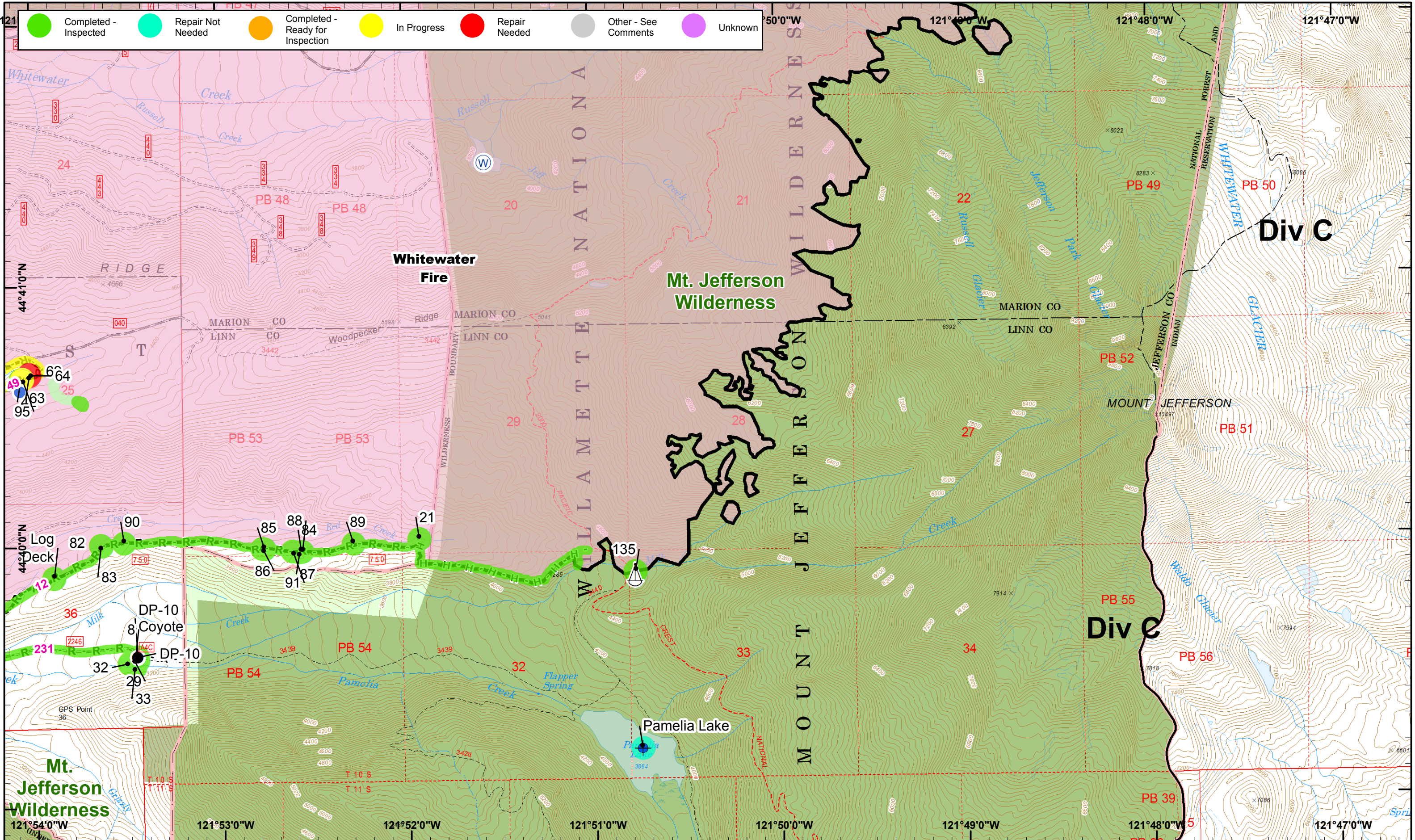




- Drop Point
- Lookout
- Ⓜ Water Source
- H - Completed Hand
- ▬ Planned Fire Line
- Helispot
- Ⓡ Repeater
- XXXX Completed Dozer
- R - Road as Line
- ▬ Completed

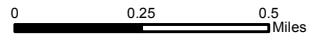
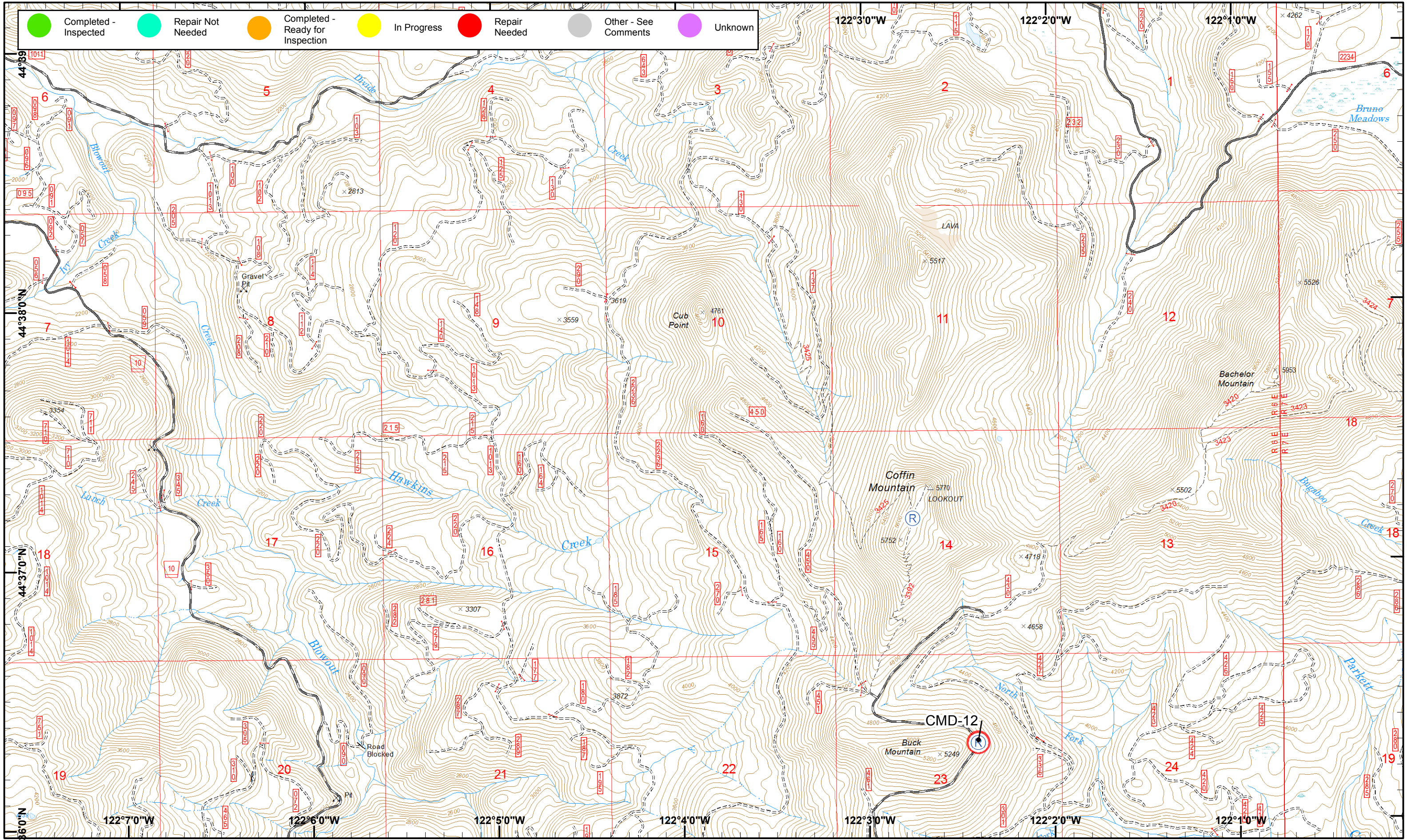
01	02	03
04	05	06
07	08	09
10	11	12
13	14	15
16		





01	02	03
04	05	06
07	08	09
10	11	12
13	14	15
16		

● Completed - Inspected
 ● Repair Not Needed
 ● Completed - Ready for Inspection
 ● In Progress
 ● Repair Needed
 ● Other - See Comments
 ● Unknown



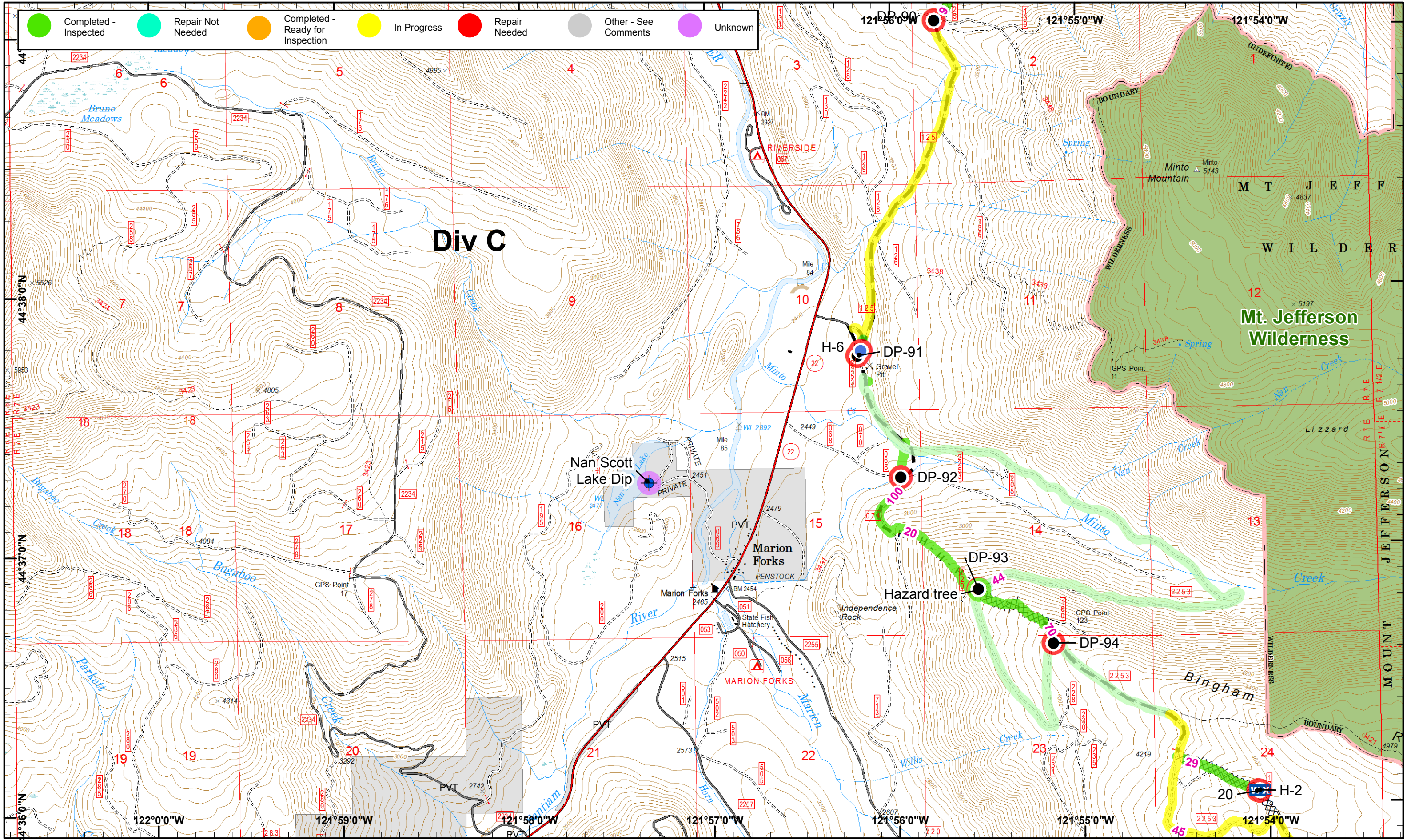
Map Datum: NAD 83



01	02	03
04	05	06
07	08	09
10	11	12
13	14	15
	16	



● Completed - Inspected
 ● Repair Not Needed
 ● Completed - Ready for Inspection
 ● In Progress
 ● Repair Needed
 ● Other - See Comments
 ● Unknown

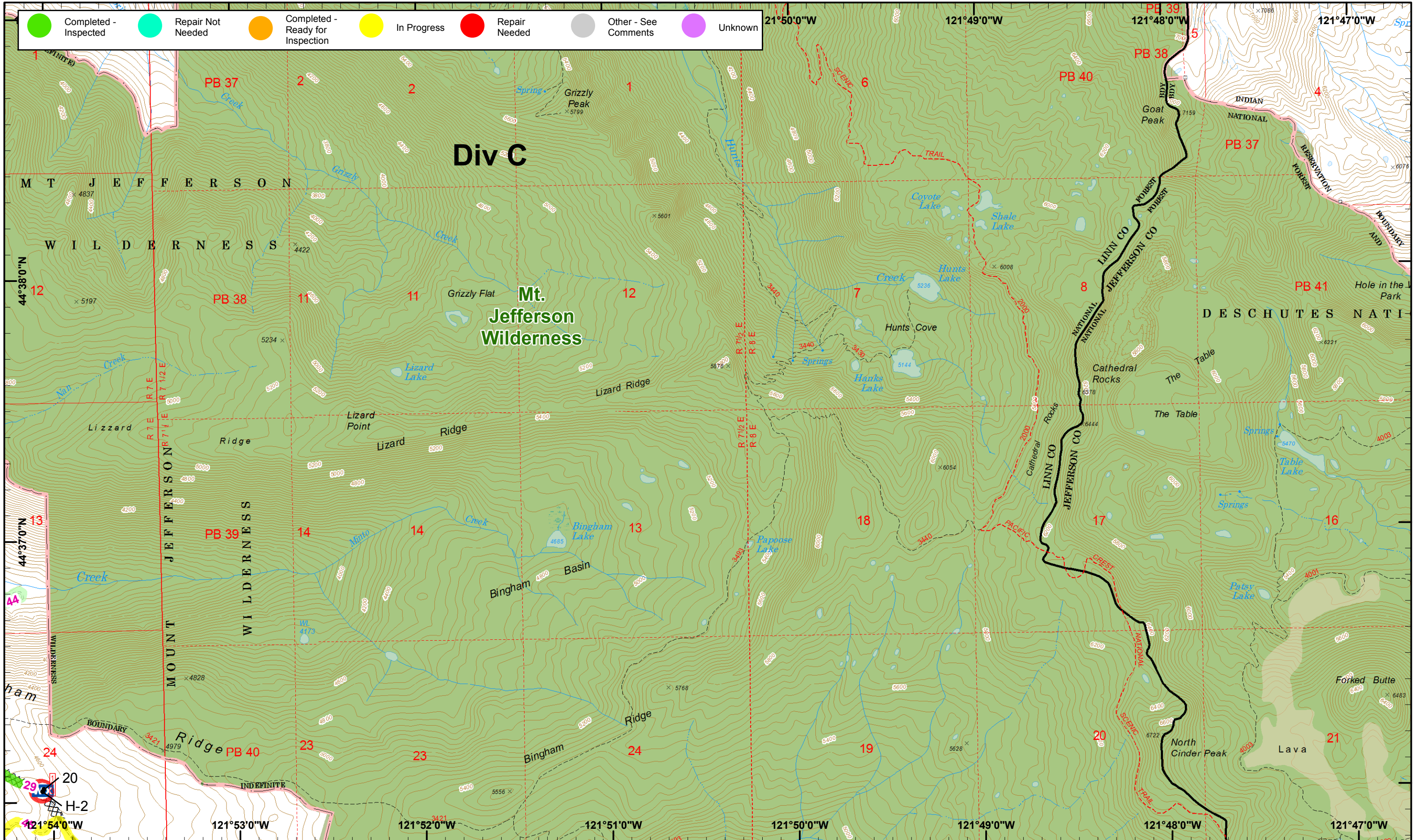


● Dip Site
 ● Helispot
 XXXX Completed Dozer
● Drop Point
 WX Mobile Weather
 H - Completed Hand
 - - - Planned Fire Line

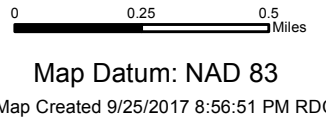
01	02	03
04	05	06
07	08	09
10	11	12
13	14	15
16		



● Completed - Inspected
 ● Repair Not Needed
 ● Completed - Ready for Inspection
 ● In Progress
 ● Repair Needed
 ● Other - See Comments
 ● Unknown



Whitewater Repair Plan
 September 26, 2017
 IR @ 9/14/2017 1928
 DRTI @ 09/15/2017 1200

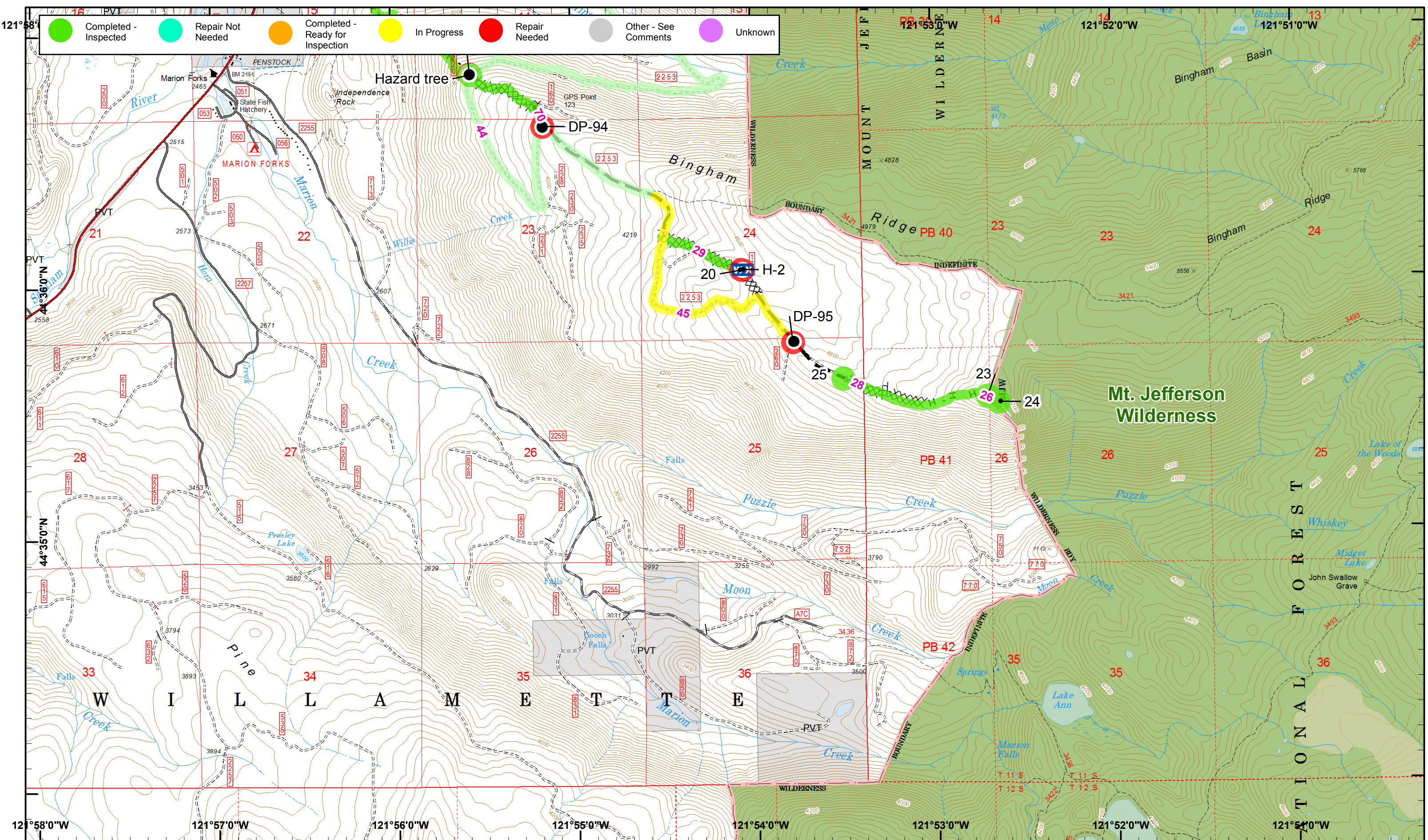


- Helispot XXXX Completed Dozer
- Mobile Weather Planned Fire Line



01	02	03
04	05	06
07	08	09
10	11	12
13	14	15
16		





- Drop Point
- Helispot
- WX Mobile Weather
- XXXX Completed Dozer
- H - Completed Hand
- Planned Fire Line

01	02	03
04	05	06
07	08	09
10	11	12
13	14	15
16		

