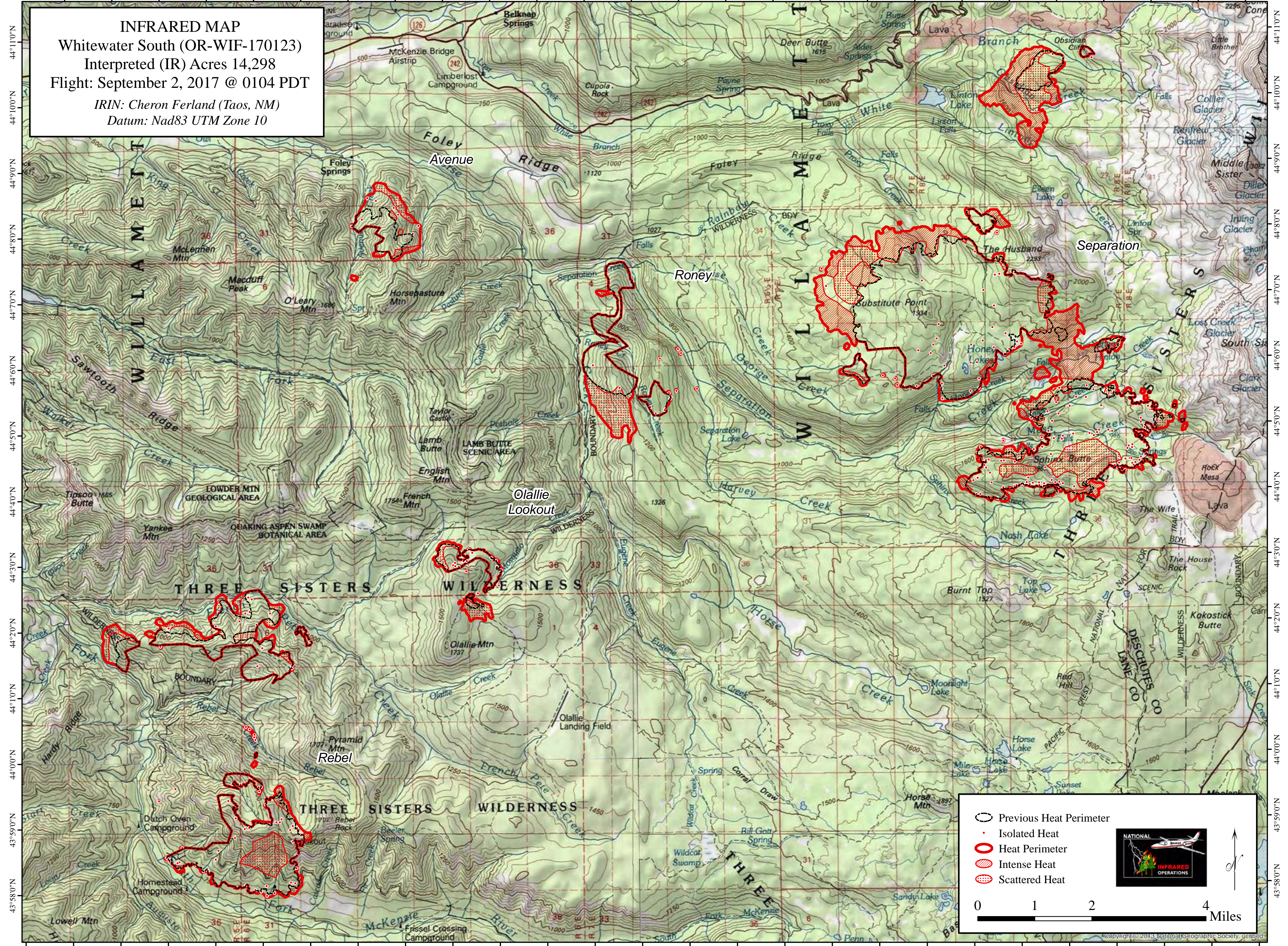




122°12'0"W 122°11'0"W 122°10'0"W 122°9'0"W 122°8'0"W 122°7'0"W 122°6'0"W 122°5'0"W 122°4'0"W 122°3'0"W 122°2'0"W 122°1'0"W 122°0'0"W 121°59'0"W 121°58'0"W 121°57'0"W 121°56'0"W 121°55'0"W 121°54'0"W 121°53'0"W 121°52'0"W 121°51'0"W 121°50'0"W 121°49'0"W 121°48'0"W 121°47'0"W

**INFRARED MAP**  
Whitewater South (OR-WIF-170123)  
Interpreted (IR) Acres 14,298  
Flight: September 2, 2017 @ 0104 PDT  
IRIN: Cheron Ferland (Taos, NM)  
Datum: Nad83 UTM Zone 10



- Previous Heat Perimeter
- Isolated Heat
- Heat Perimeter
- Intense Heat
- Scattered Heat

0 1 2 4 Miles

122°13'0"W 122°12'0"W 122°11'0"W 122°10'0"W 122°9'0"W 122°8'0"W 122°7'0"W 122°6'0"W 122°5'0"W 122°4'0"W 122°3'0"W 122°2'0"W 122°1'0"W 122°0'0"W 121°59'0"W 121°58'0"W 121°57'0"W 121°56'0"W 121°55'0"W 121°54'0"W 121°53'0"W 121°52'0"W 121°51'0"W 121°50'0"W 121°49'0"W 121°48'0"W 121°47'0"W