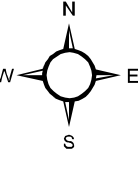
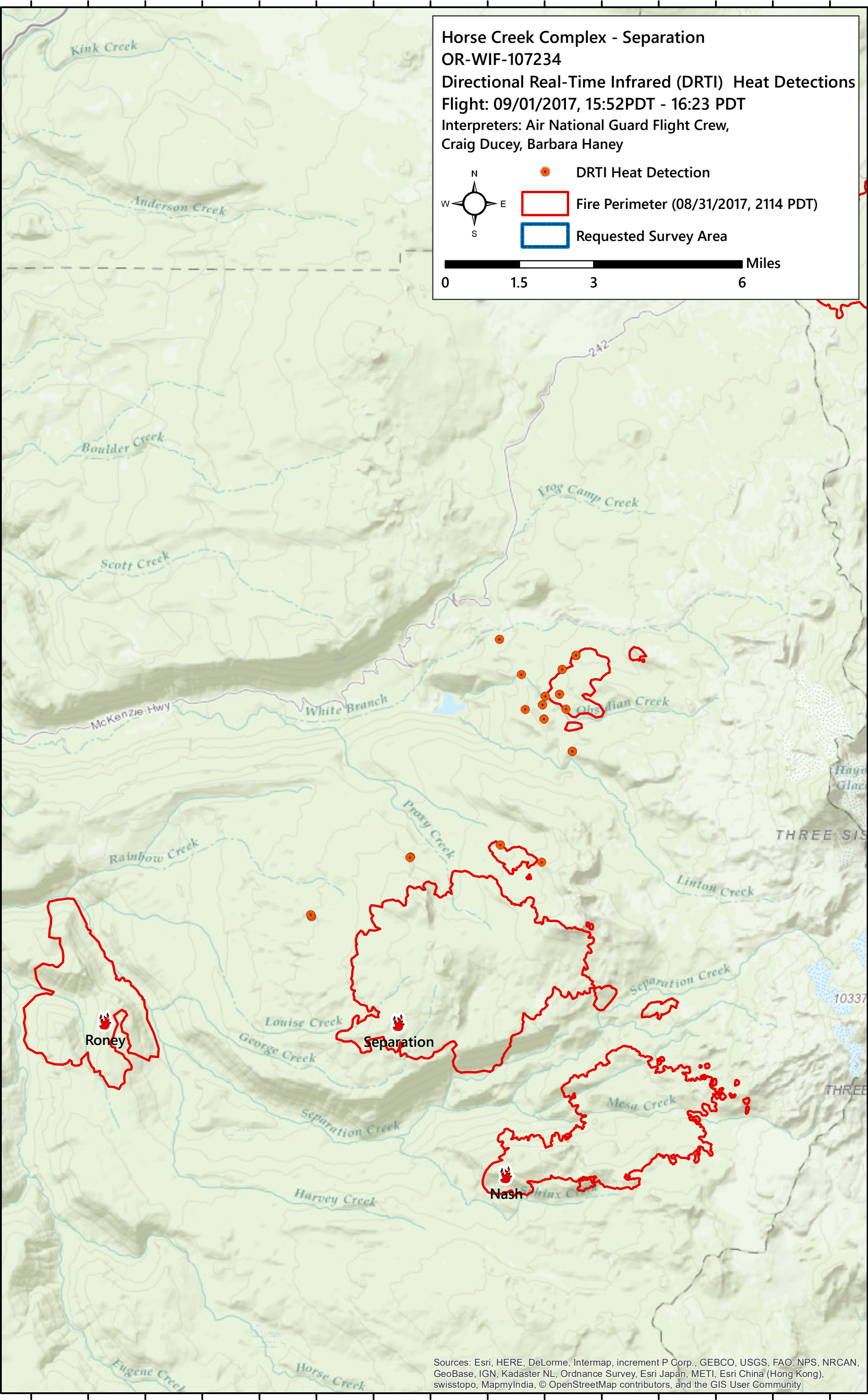


**Horse Creek Complex - Separation**  
**OR-WIF-107234**  
**Directional Real-Time Infrared (DRTI) Heat Detections**  
**Flight: 09/01/2017, 15:52PDT - 16:23 PDT**  
**Interpreters: Air National Guard Flight Crew,**  
**Craig Ducey, Barbara Haney**



- DRTI Heat Detection
- Fire Perimeter (08/31/2017, 2114 PDT)
- Requested Survey Area

**0 1.5 3 6 Miles**



Sources: Esri, HERE, DeLorme, Intermap, increment P Corp., GEBCO, USGS, FAO, NPS, NRCAN, GeoBase, IGN, Kadaster NL, Ordnance Survey, Esri Japan, METI, Esri China (Hong Kong), swisstopo, MapmyIndia, © OpenStreetMap contributors, and the GIS User Community