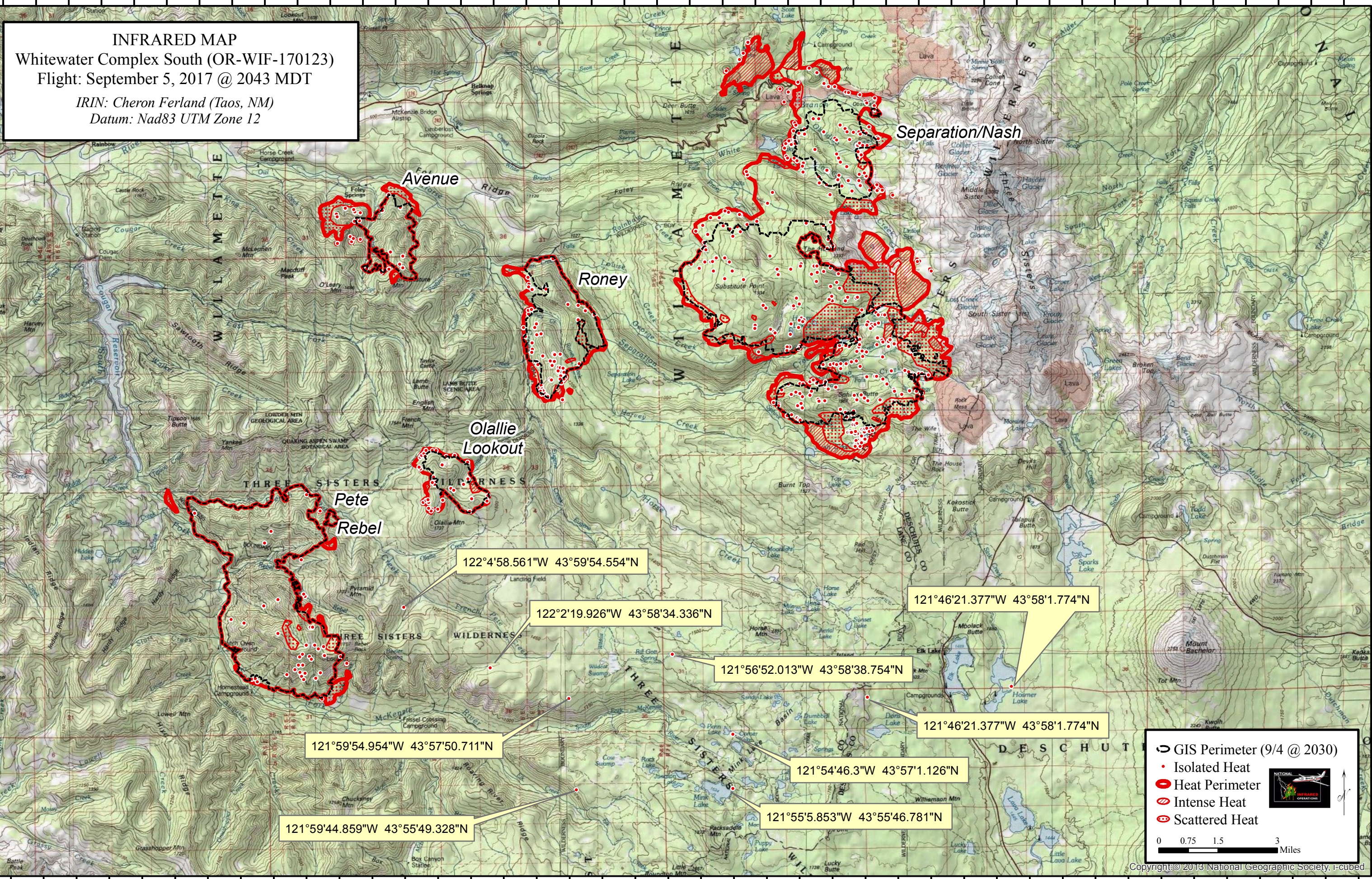


122°16'0"W 122°14'0"W 122°12'0"W 122°10'0"W 122°8'0"W 122°6'0"W 122°4'0"W 122°2'0"W 122°0'0"W 121°58'0"W 121°56'0"W 121°54'0"W 121°52'0"W 121°50'0"W 121°48'0"W 121°46'0"W 121°44'0"W 121°42'0"W 121°40'0"W 121°38'0"W 121°36'0"W



INFRARED MAP
Whitewater Complex South (OR-WIF-170123)
Flight: September 5, 2017 @ 2043 MDT
IRIN: Cheron Ferland (Taos, NM)
Datum: Nad83 UTM Zone 12

Avenue

Roney

Separation/Nash

Olallie Lookout

Pete

Rebel

122°4'58.561"W 43°59'54.554"N

122°2'19.926"W 43°58'34.336"N

121°56'52.013"W 43°58'38.754"N

121°46'21.377"W 43°58'1.774"N

121°46'21.377"W 43°58'1.774"N


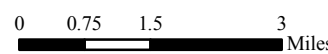
121°59'54.954"W 43°57'50.711"N

121°54'46.3"W 43°57'1.126"N

121°59'44.859"W 43°55'49.328"N

121°55'5.853"W 43°55'46.781"N

- GIS Perimeter (9/4 @ 2030)
- Isolated Heat
- Heat Perimeter
- Intense Heat
- Scattered Heat

Copyright © 2013 National Geographic Society, i-cubed

122°16'0"W 122°14'0"W 122°12'0"W 122°10'0"W 122°8'0"W 122°6'0"W 122°4'0"W 122°2'0"W 122°0'0"W 121°58'0"W 121°56'0"W 121°54'0"W 121°52'0"W 121°50'0"W 121°48'0"W 121°46'0"W 121°44'0"W 121°42'0"W 121°40'0"W 121°38'0"W 121°36'0"W