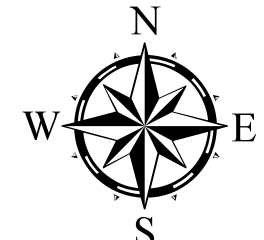


**Whitestone Complex  
WA-COA-00053**

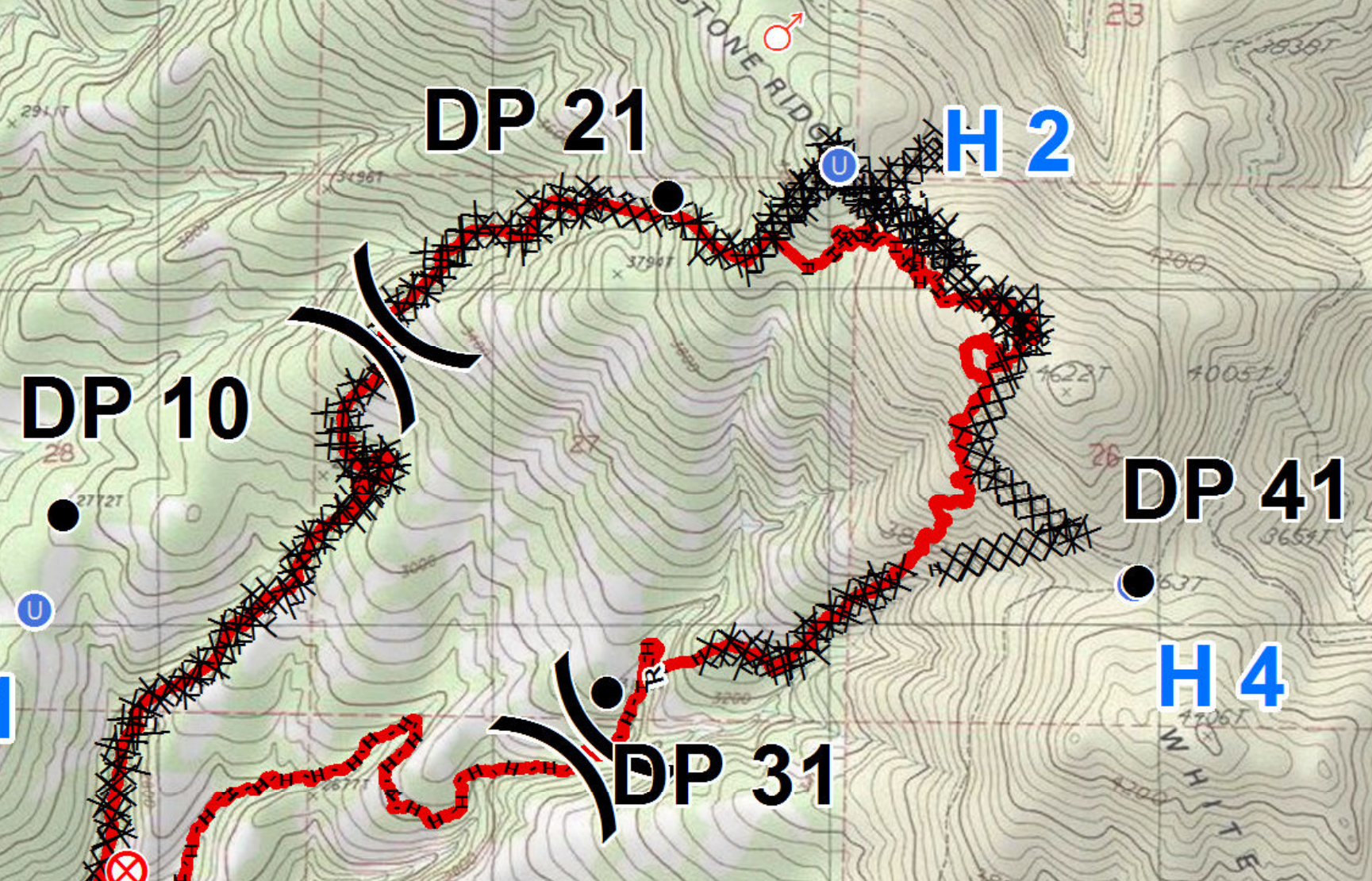
Date: 7/23/2017



0 1,750 3,500 7,000  
Feet

**H3**  
**Staging**  
**Friedlander Spike**

**DIV K / M**



**DIV A / Z**

**Div. T (67)**

**Div. P (66)**

**H5**

**H10**

- Legend**
- (X) Division
  - Completed Dozer Line
  - H-H-H Hand Line
  - R-R-R Road as Completed Line
  - Fire Polygon
  - Camp
  - Drop Point
  - Fire Location
  - Fire Origin
  - Spot Fire
  - Staging Area
  - Water Source
  - Unimproved Landing Spot