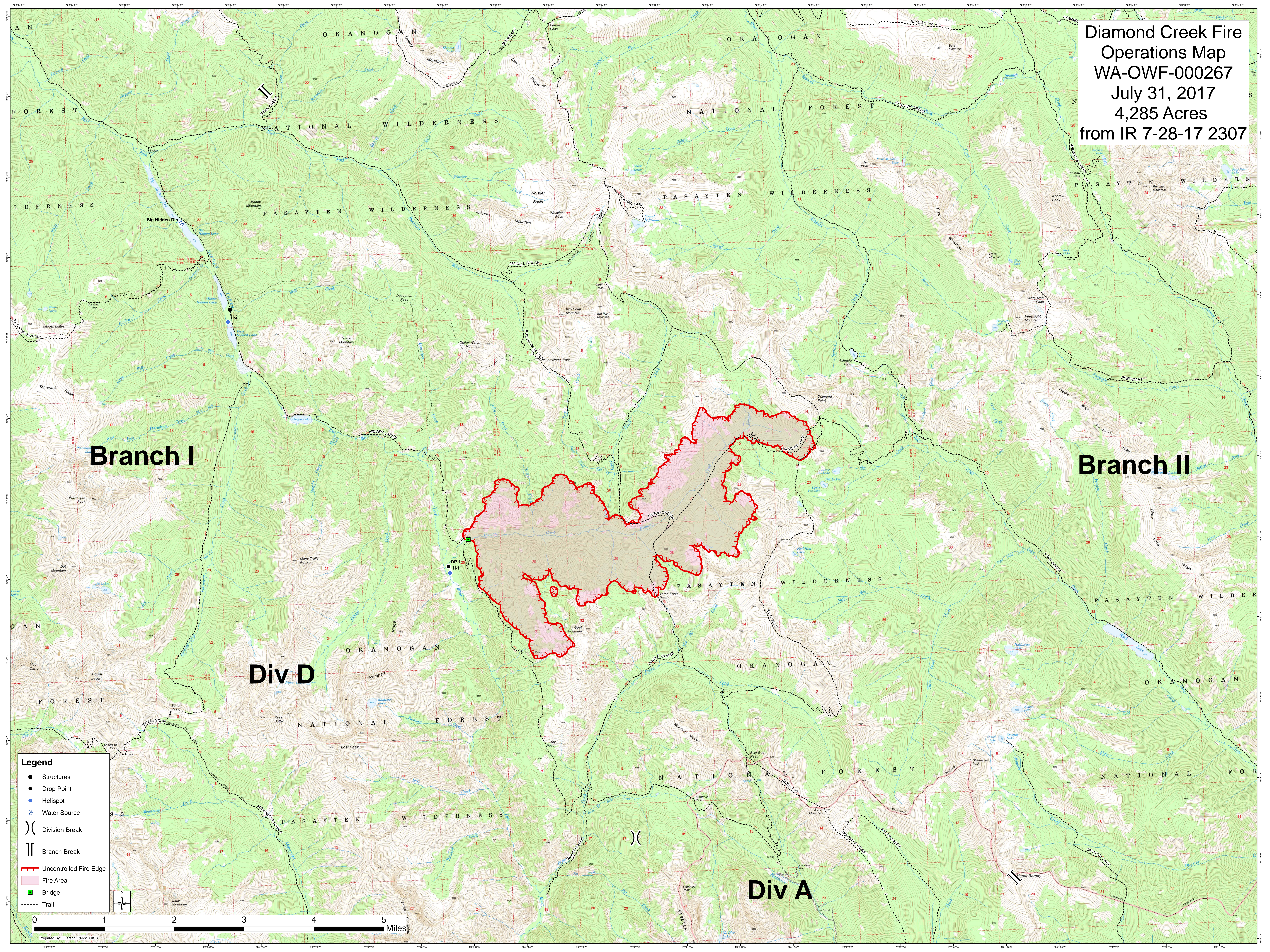


**Diamond Creek Fire
Operations Map
WA-OWF-000267
July 31, 2017
4,285 Acres
from IR 7-28-17 2307**



Branch I

Branch II

Div D

Div A

- Legend**
- Structures
 - Drop Point
 - Helispot
 - ⊙ Water Source
 -) (Division Break
 -] [Branch Break
 - Uncontrolled Fire Edge
 - Fire Area
 - Bridge
 - Trail

0 1 2 3 4 5 Miles

Prepared By: D.Lanson, PNW2 GIS