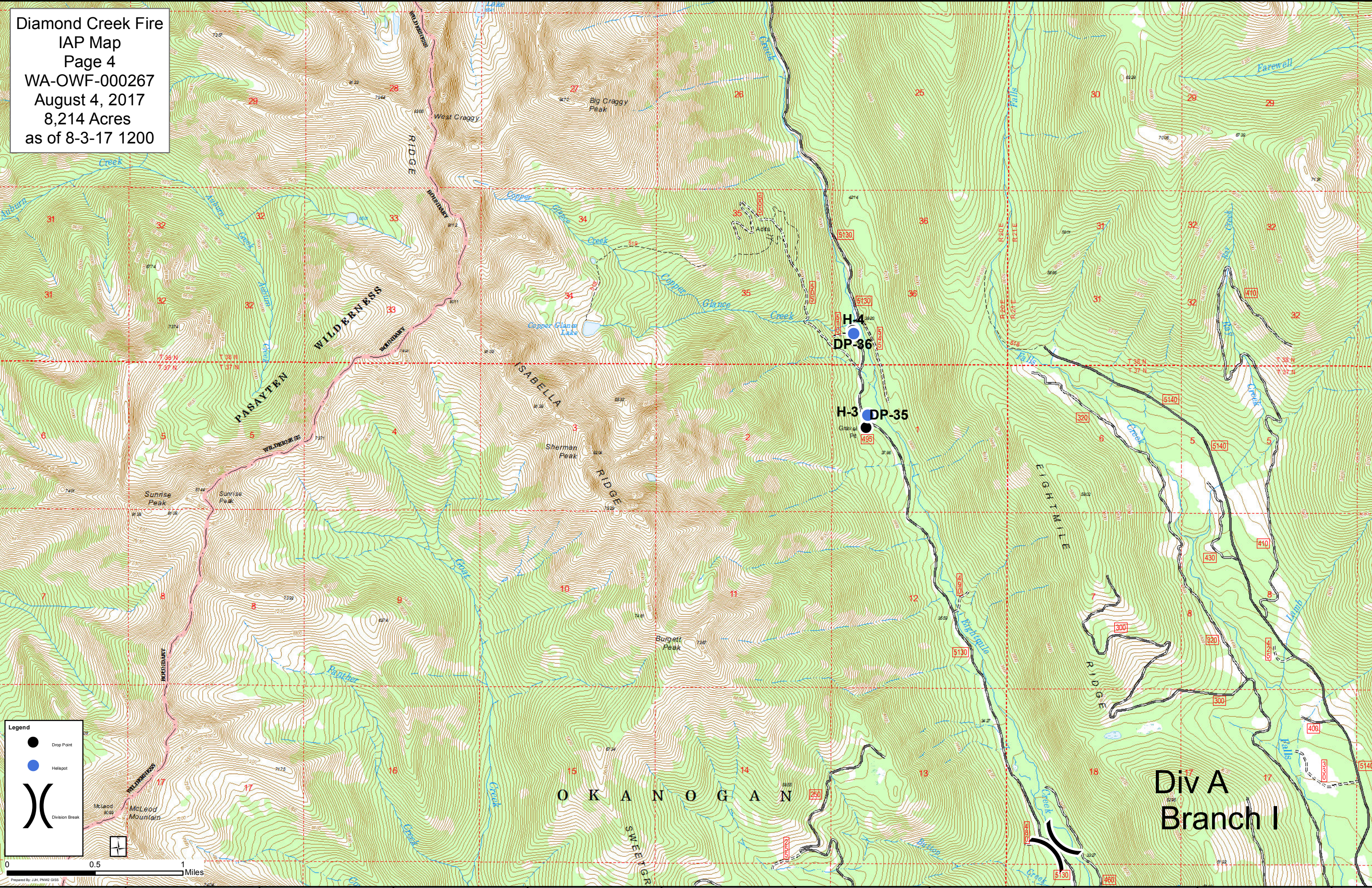


Diamond Creek Fire
IAP Map
Page 4
WA-OWF-000267
August 4, 2017
8,214 Acres
as of 8-3-17 1200



Legend

- Drop Point
- Helispot
-)) Division Break



Div A
Branch I

120°23'0"W 120°22'0"W 120°21'0"W 120°20'0"W 120°19'0"W 120°18'0"W 120°17'0"W 120°16'0"W 120°15'0"W 120°14'0"W

48°46'0"N
48°45'0"N
48°44'0"N
48°43'0"N
48°42'0"N

48°46'0"N
48°45'0"N
48°44'0"N
48°43'0"N
48°42'0"N