

Diamond Creek Fire  
IAP Map  
Index Page  
WA-OWF-000267  
August 4, 2017  
8,214 Acres  
as of 8-3-17 1200

**Branch II**

**Page1**

**Page2**

**Page3**

**Page4**

**Page5**

**Branch I**

**Div G**

**DIV A**

**DIV D**

Rampart Dip

Lower Fox Dip

Upper Fox Dip

Fool Hen Dip

H-5

DP-38

H-4DP-36

H-3DP-35

SwtGrass

**Legend**

- Drop Point
- Helispot
- WX Mobile Weather Unit
- Ⓡ Repeater
- Ⓢ Water Source
- ) ( Division Break
- ┌─┐ Uncontrolled Fire Edge
- ▭ Fire Area
- ▭ IAP\_Pages

at

Ⓡ

) (



Diamond Creek Fire  
IAP Map  
Page 1  
WA-OWF-000267  
August 4, 2017  
8,214 Acres  
as of 8-3-17 1200

R N E S S



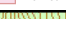
P A S A Y T E N W I L D E R N E S S

Branch I  
Div G

Branch II

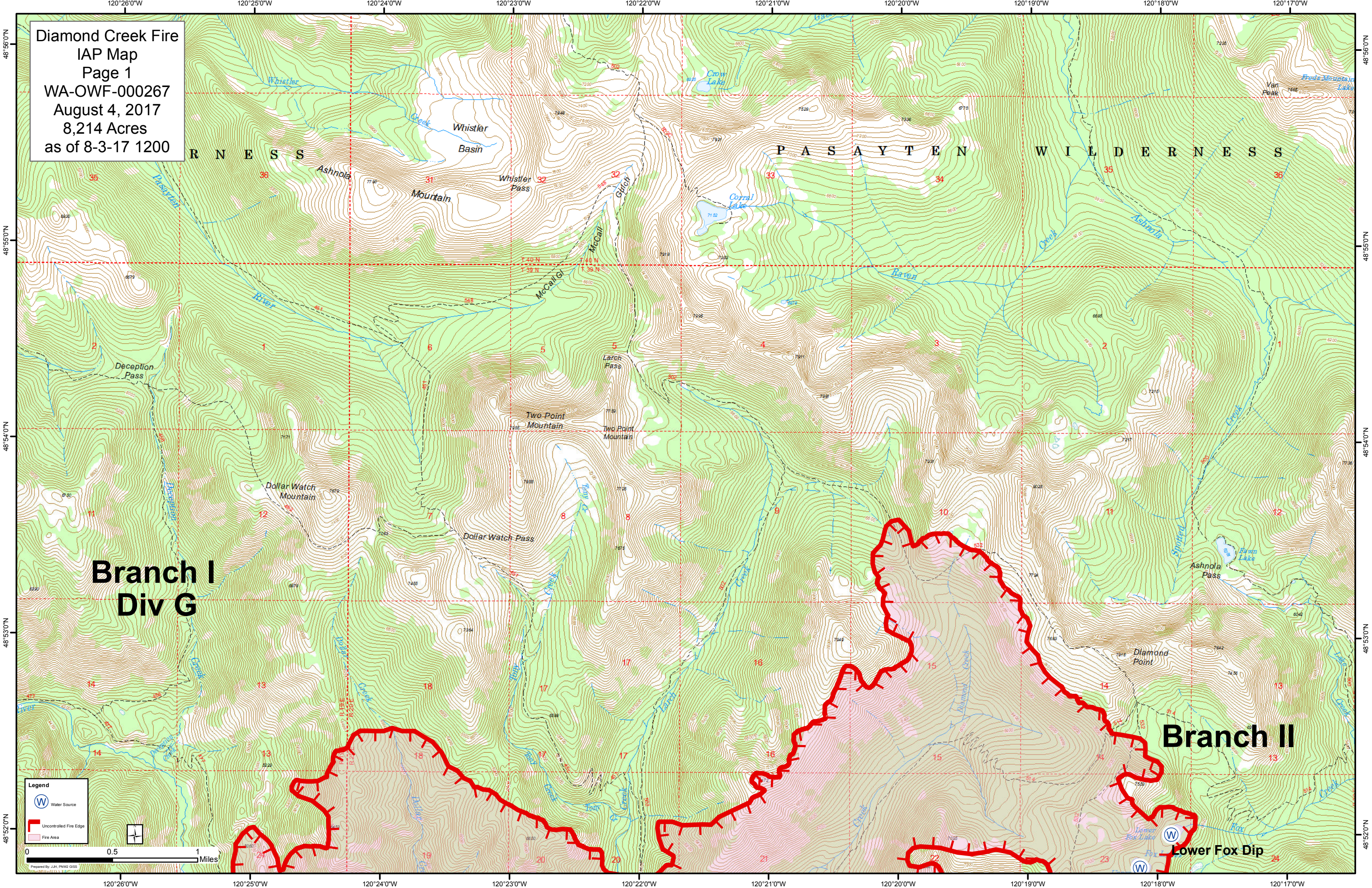
Lower Fox Dip

**Legend**

-  Water Source
-  Uncontrolled Fire Edge
-  Fire Area

0 0.5 1 Miles

Prepared by J.A. PNM2 GISD  
Copyright 2017, PNM2





Diamond Creek Fire  
IAP Map  
Page 2  
WA-OWF-000267  
August 4, 2017  
8,214 Acres  
as of 8-3-17 1200

**Branch I**

**Branch II**

**Div G**

**Fool Hen Dip**

**Upper Fox Dip**

**Lower Fox Dip**

P A S A Y T E N W I L D E R N E S S

A N O G A N

**Div A**

O K A N O G A N

F O R E S T

**Legend**

- Bridge
- Helipot
- Water Source
- Uncontrolled Fire Edge
- Fire Area



Prepared by J.A. PMW GIS



Diamond Creek Fire  
IAP Map  
Page 3  
WA-OWF-000267  
August 4, 2017  
8,214 Acres  
as of 8-3-17 1200

# Div G Branch I

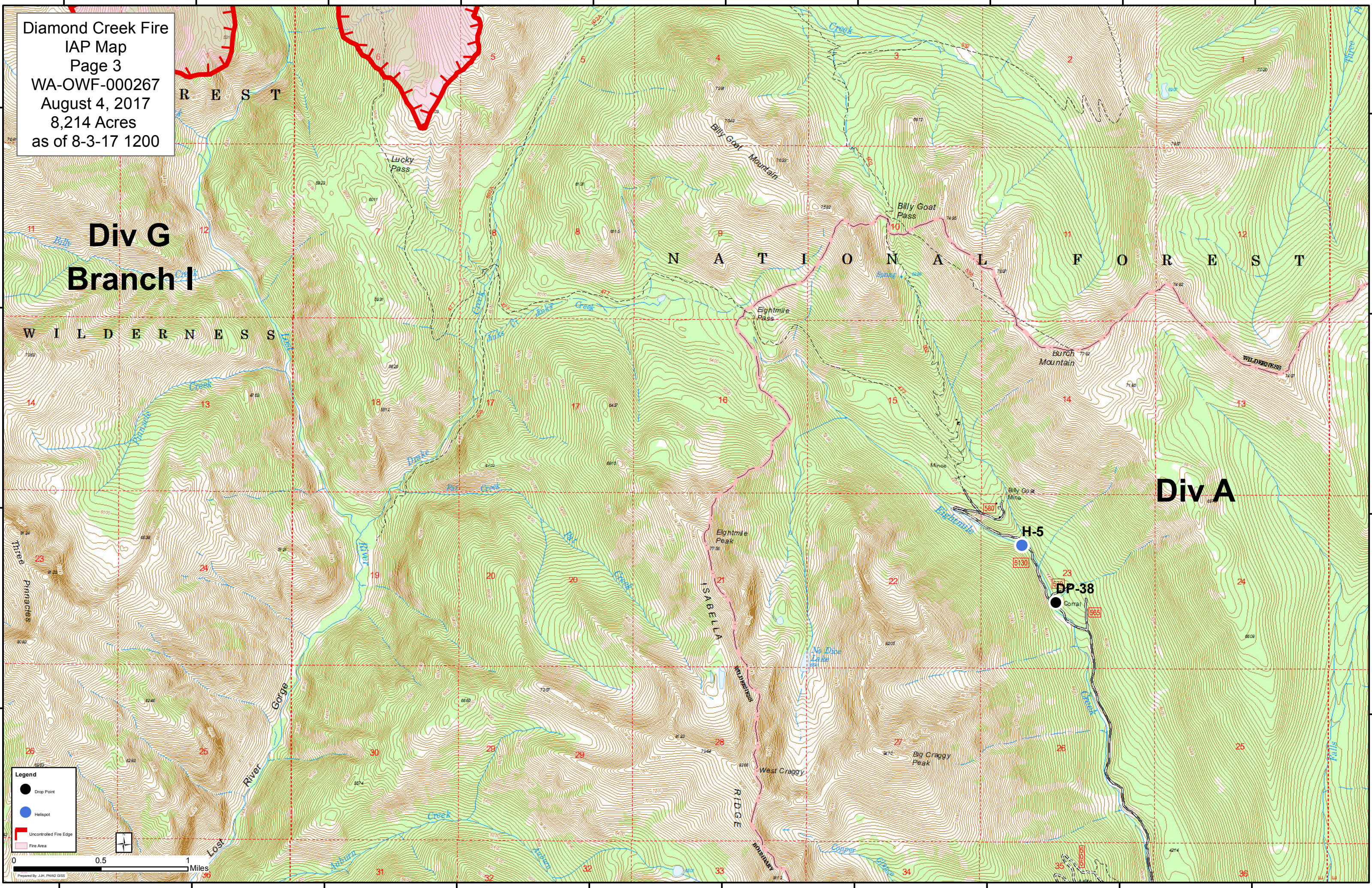
W I L D E R N E S S

N A T I O N A L F O R E S T

# Div A

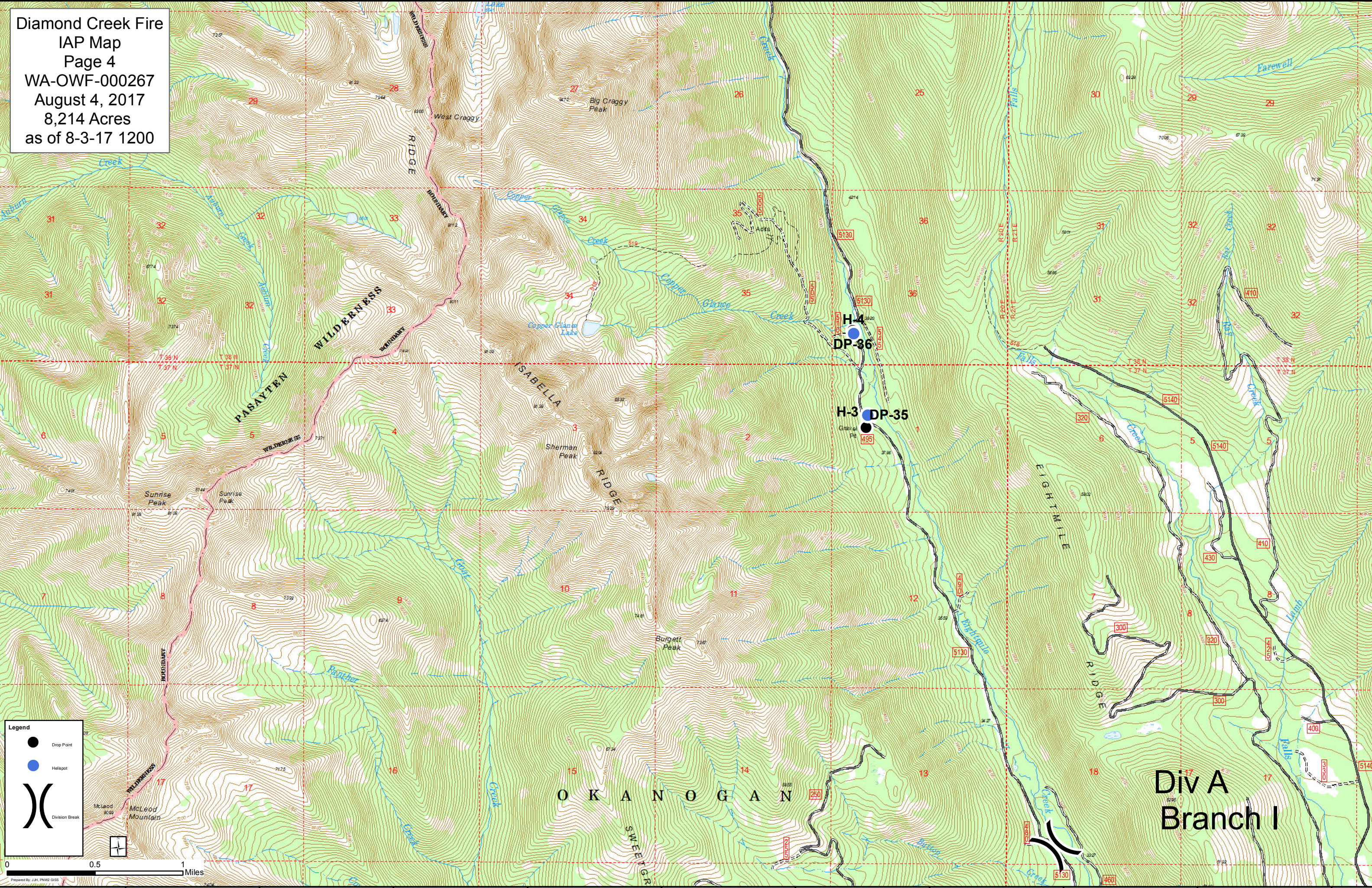
**Legend**

- Drop Point
- Helispot
- ▬ Uncontrolled Fire Edge
- ▭ Fire Area





Diamond Creek Fire  
IAP Map  
Page 4  
WA-OWF-000267  
August 4, 2017  
8,214 Acres  
as of 8-3-17 1200



**Legend**

- Drop Point
- Helispot
- ⎸ Division Break

McLeod Mountain

0 0.5 1 Miles

Div A  
Branch I



Diamond Creek Fire  
IAP Map  
Page 5  
WA-OWF-000267  
August 4, 2017  
8,214 Acres  
as of 8-3-17 1200

Div A  
Branch I

Div D

**Legend**

- Mobile Weather Unit
- Repeater
- Division Break

0 0.5 1 Miles

