

**Diamond Creek Fire
Operations Map
WA-OWF-000267
August 4, 2017
8,214 Acres
as of 8-3-17 1200**

Branch I

Branch II

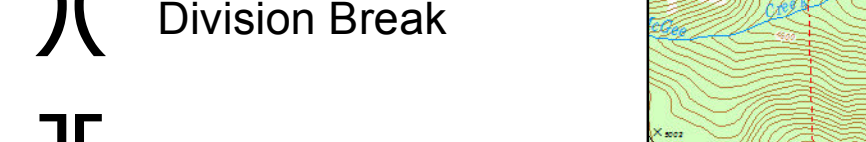
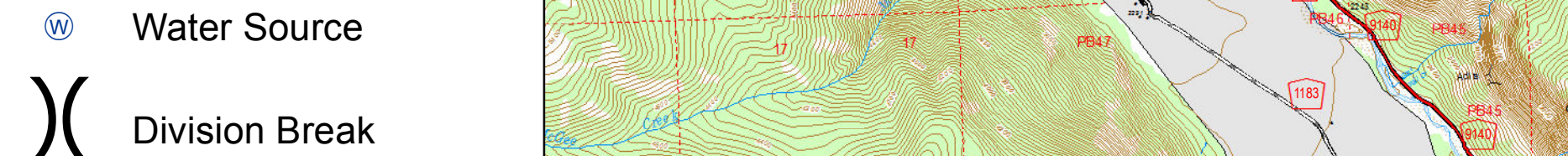
Div G

Div A

Div D

Div F

- Legend**
- Structures
 - Bridge
 - Drop Point
 - Hellsport
 - ☒ Mobile Weather Unit
 - Ⓜ Repeater
 - Ⓜ Water Source
 - ⌘ Division Break
 - ⌘ Branch Break
 - ⋯ Trail
 - Uncontrolled Fire Edge
 - Fire Area



Prepared By: JHM, PMWZ GIS