







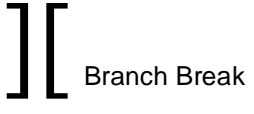

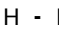


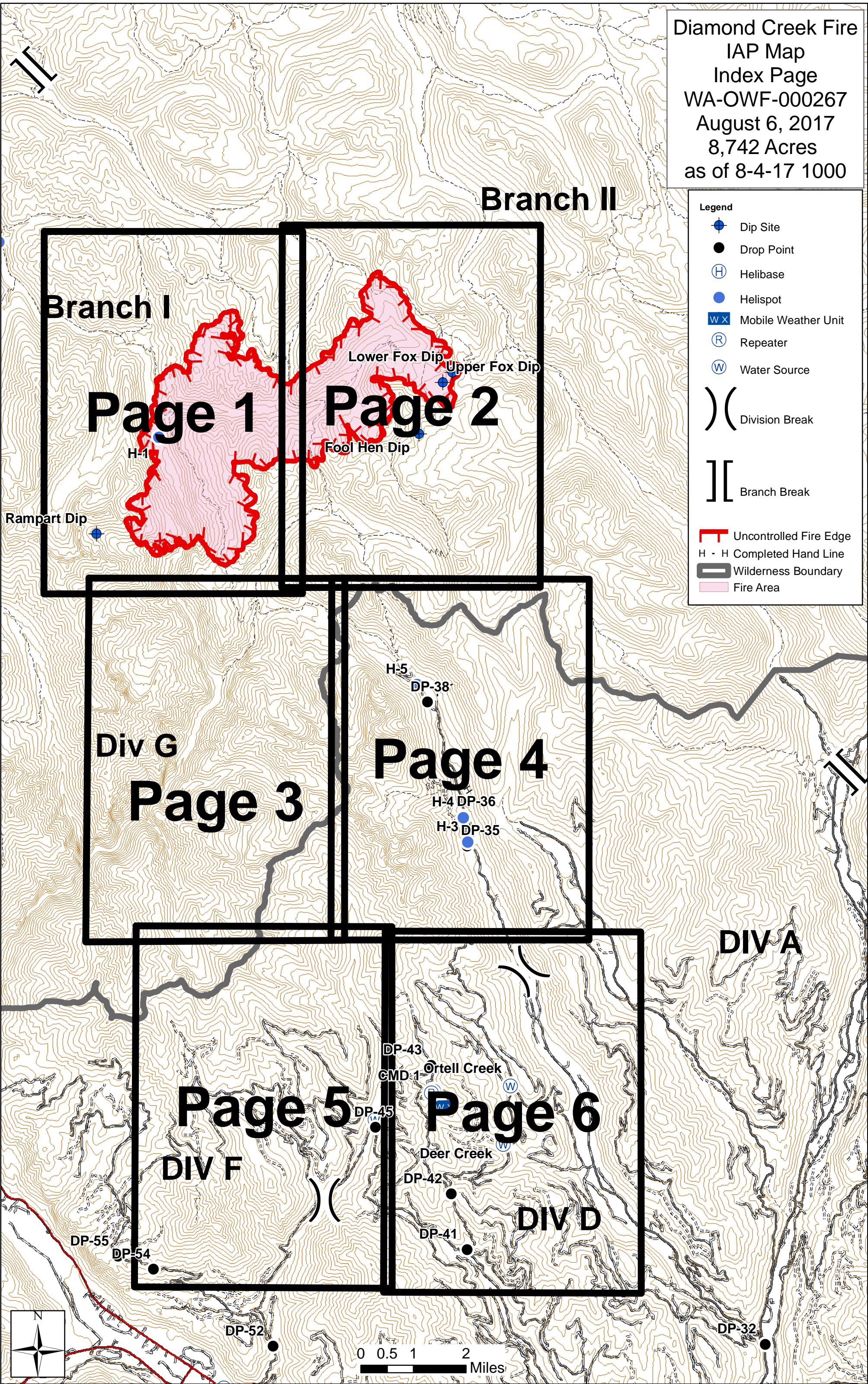


Legend

-  Dip Site
-  Drop Point
-  Helibase
-  Helispot
-  Mobile Weather Unit
-  Repeater
-  Water Source
-  Division Break
-  Branch Break
-  Uncontrolled Fire Edge
-  H - H Completed Hand Line
-  Wilderness Boundary
-  Fire Area



Branch II

Branch I

Page 1

Page 2

Div G

Page 3

Page 4

Div A

Page 5

Page 6

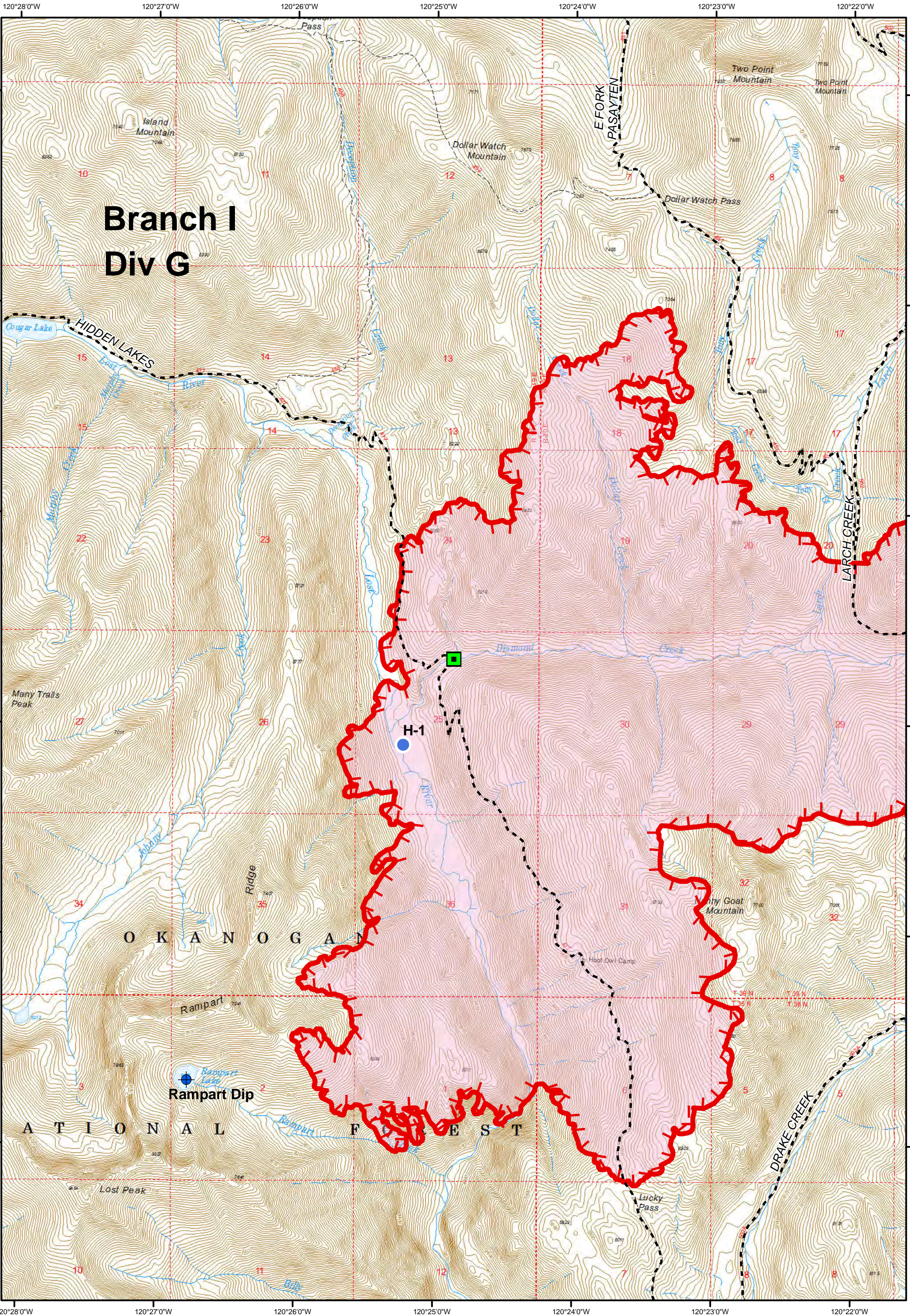
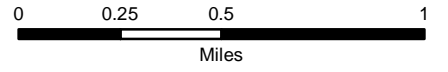
Div F

Div D

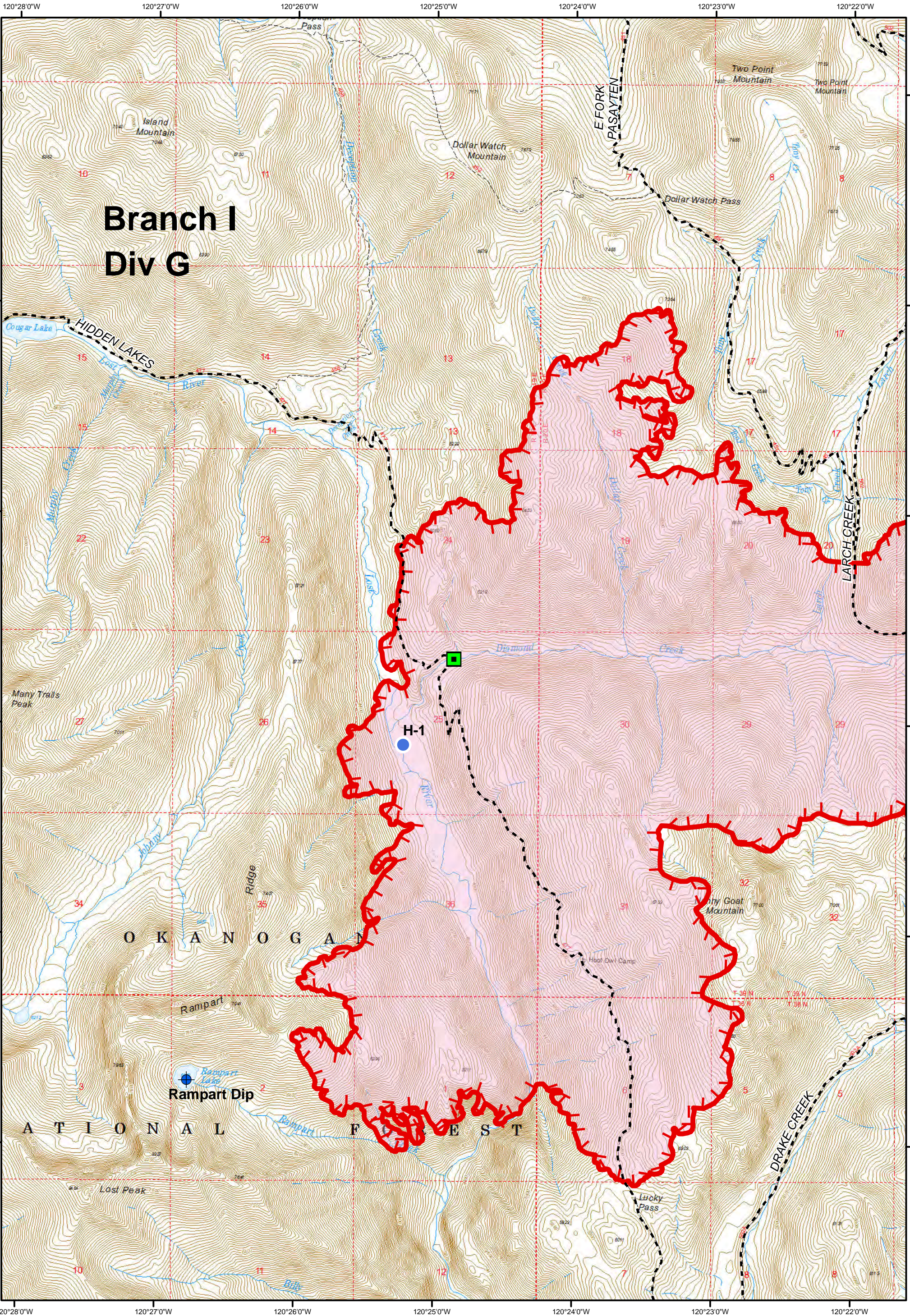
0 0.5 1 2 Miles

Legend

- Bridge
- Helispot
- Trail
- Fire Area
- Dip Site
- Uncontrolled Fire Edge
- Wilderness Boundary

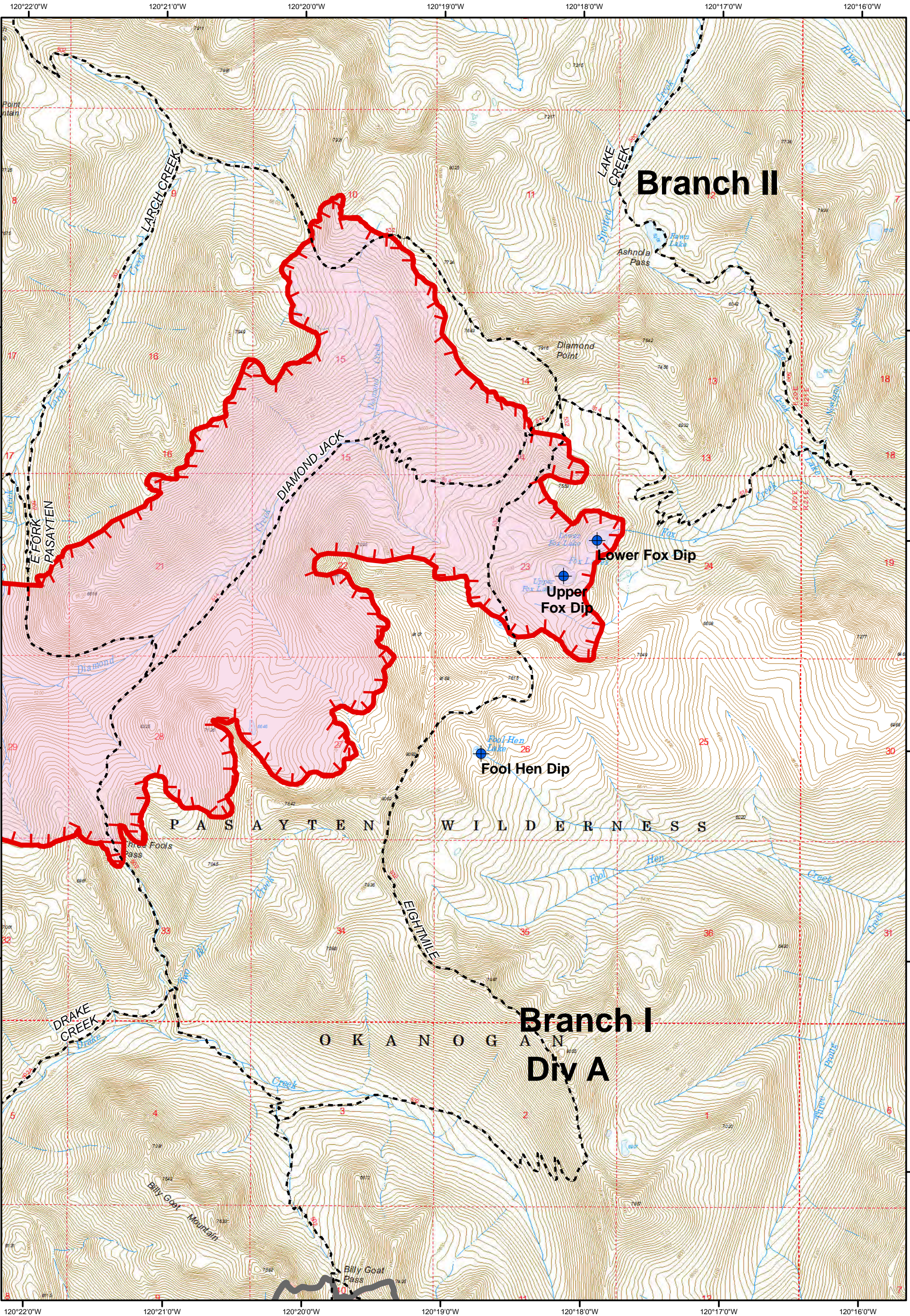
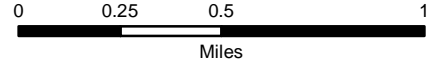


Branch I Div G



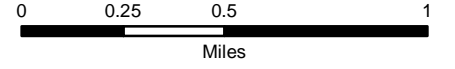
Legend

- Dip Site
- Trail
- Uncontrolled Fire Edge
- Fire Area
- Wilderness Boundary

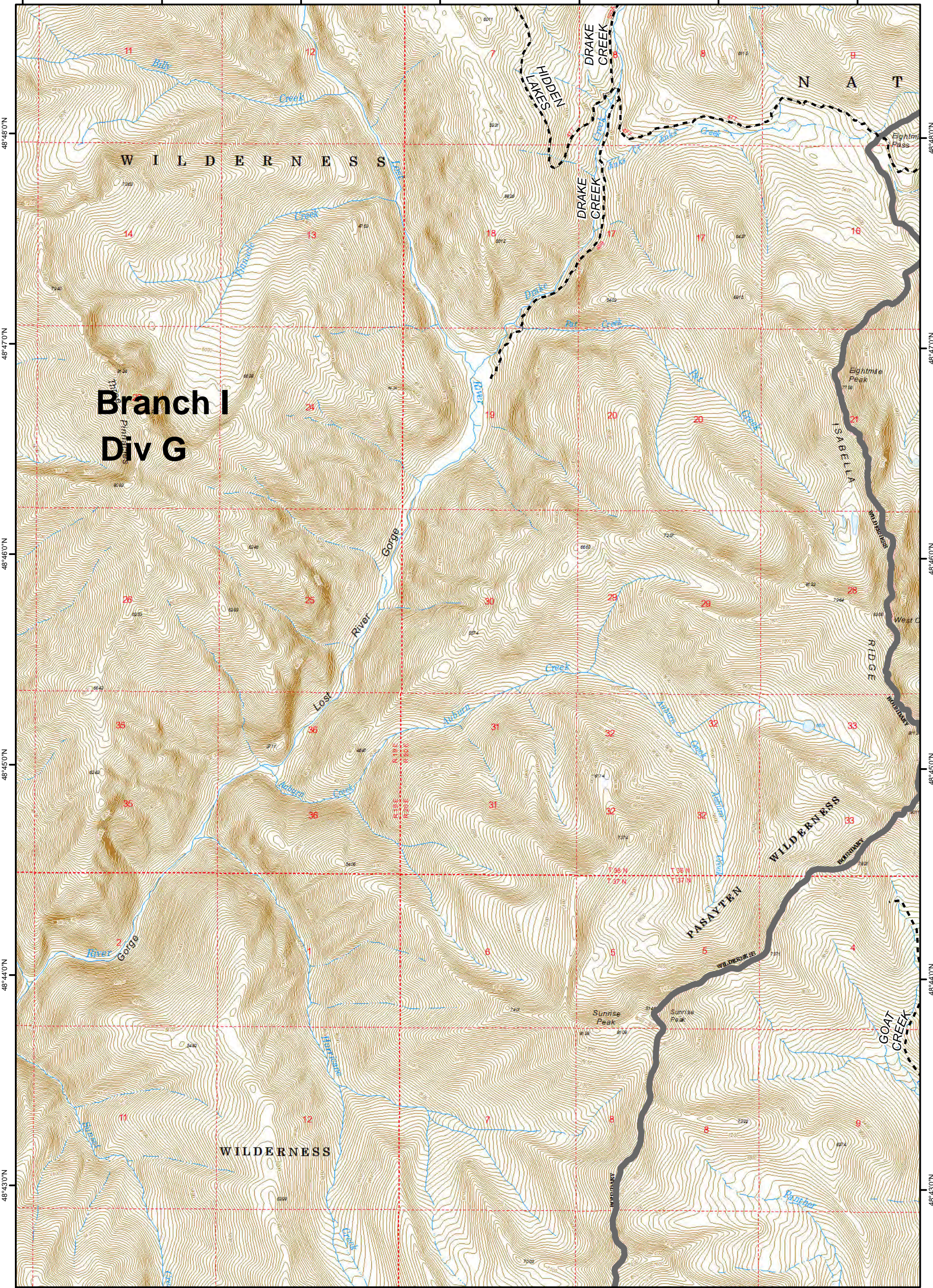


Legend

- Trail
- Wilderness Boundary



120°27'0"W 120°26'0"W 120°25'0"W 120°24'0"W 120°23'0"W 120°22'0"W 120°21'0"W

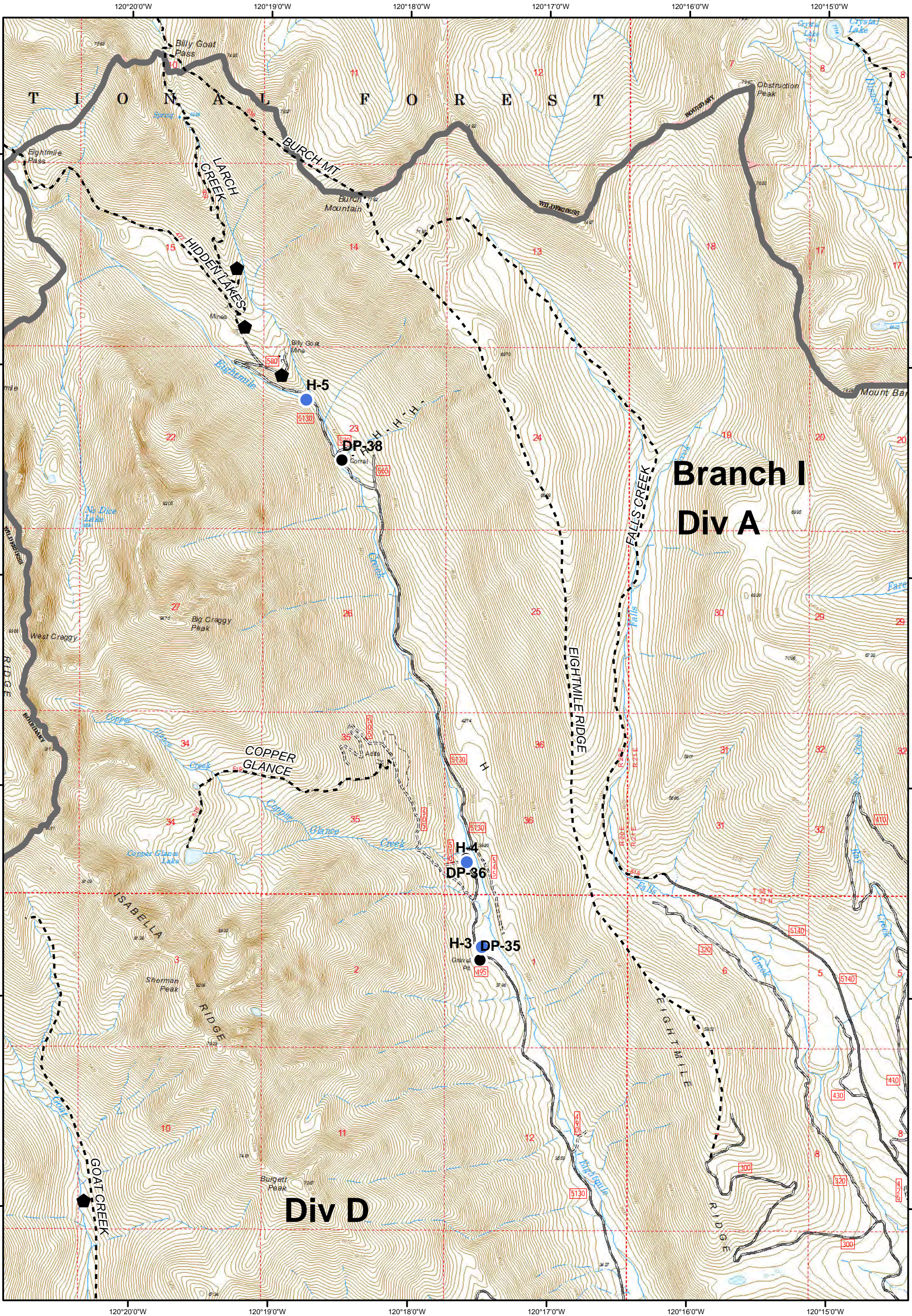
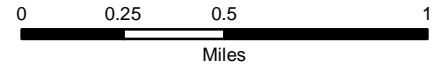


48°48'0"N 48°47'0"N 48°46'0"N 48°45'0"N 48°44'0"N 48°43'0"N

120°27'0"W 120°26'0"W 120°25'0"W 120°24'0"W 120°23'0"W 120°22'0"W 120°21'0"W

Legend

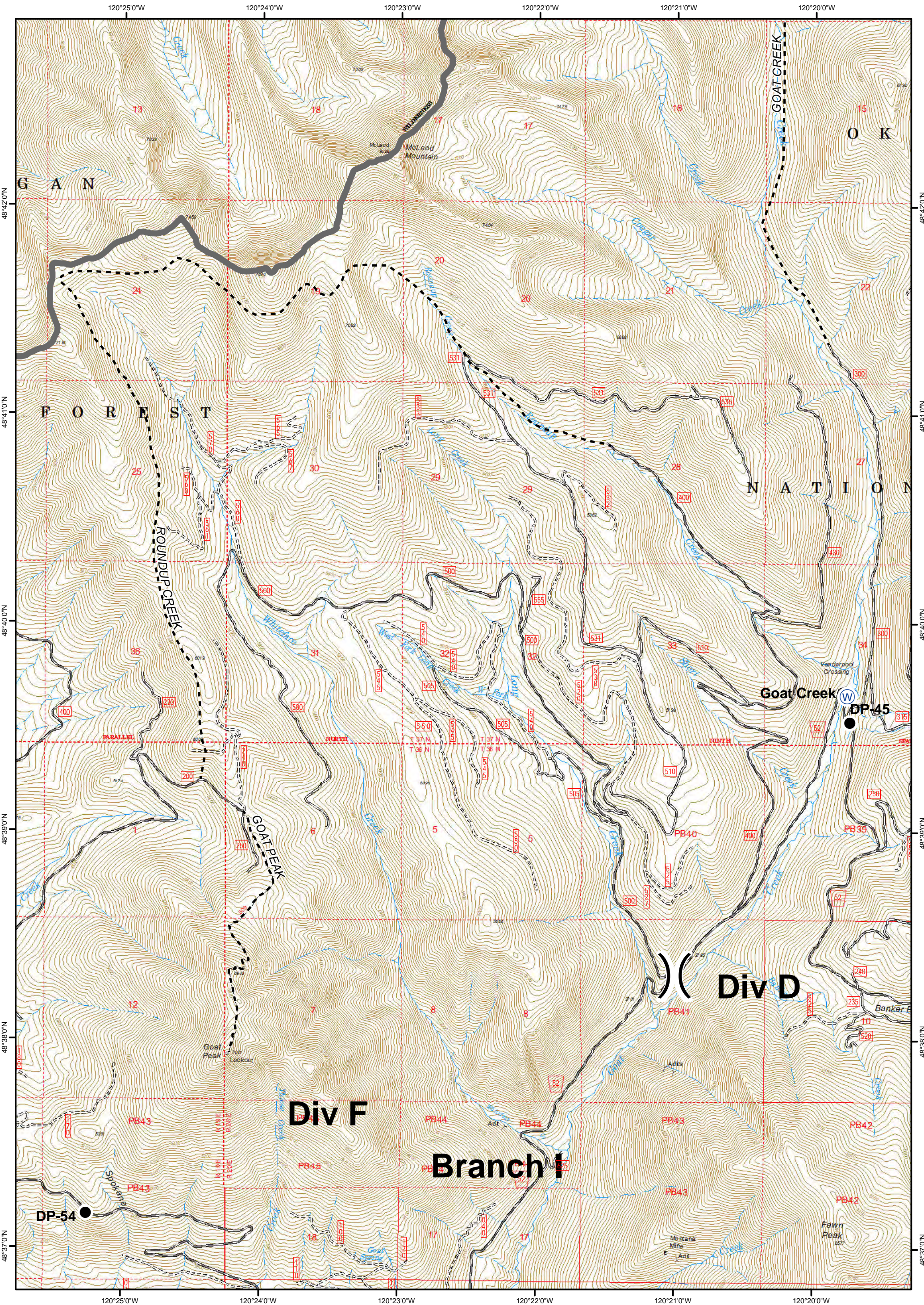
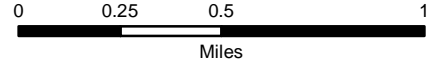
- Structures
- Helispot
- Drop Point
- Trail
- Completed Hand Line
- Wilderness Boundary



Diamond Creek Fire
IAP Map
Page 5
WA-OWF-000267
August 6, 2017
8,742 Acres
as of 8-4-17 1000

Legend

- Drop Point
- W Water Source
- Trail
- Wilderness Boundary
-) (Division Break



Legend

- Drop Point
- Ⓜ Repeater
- Ⓜ Water Source
- Ⓜ Mobile Weather Unit
- Ⓜ Division Break

