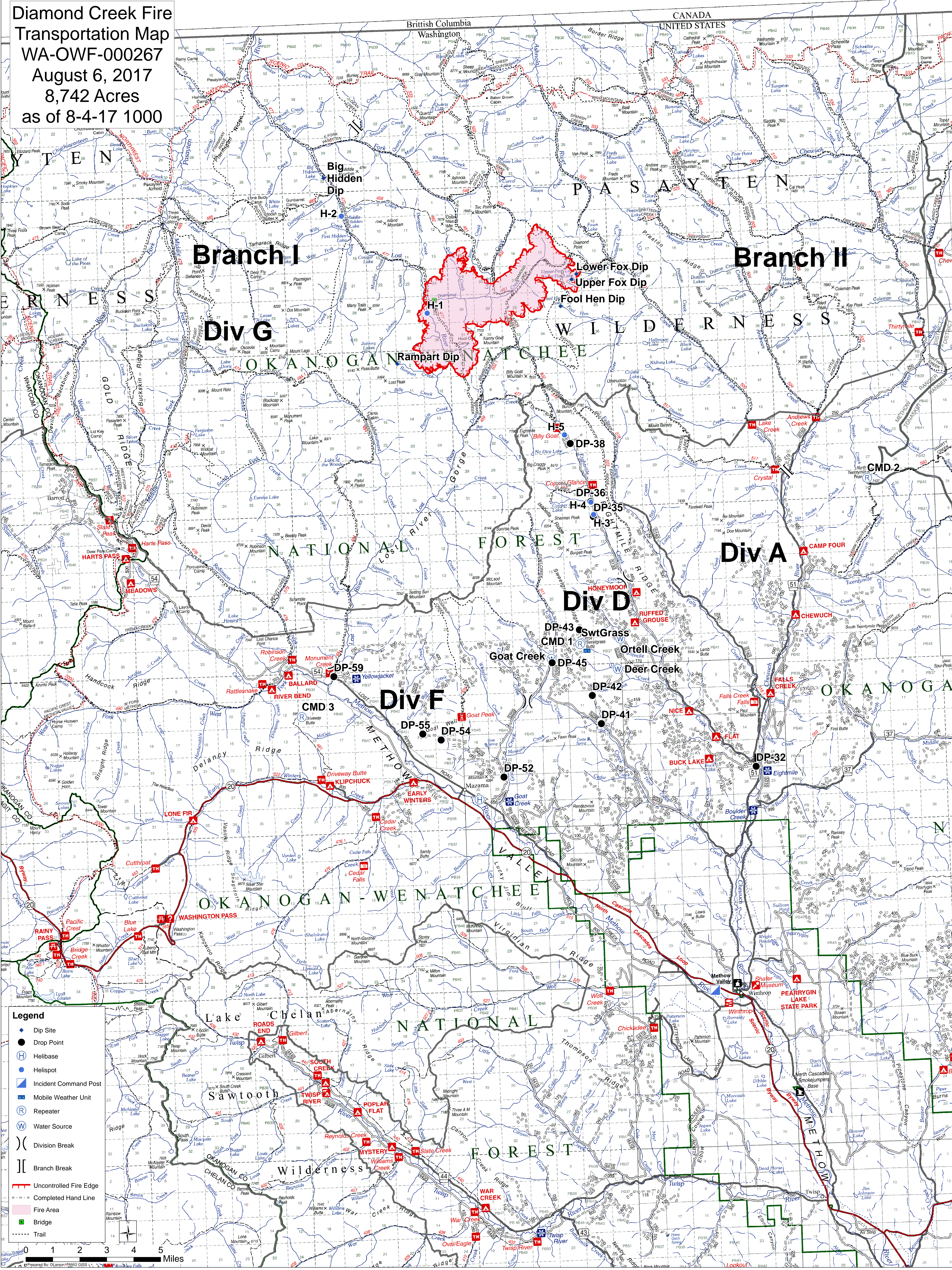


**Diamond Creek Fire  
Transportation Map  
WA-OWF-000267  
August 6, 2017  
8,742 Acres  
as of 8-4-17 1000**



- Legend**
- ◆ Dip Site
  - Drop Point
  - Ⓜ Helibase
  - Helispot
  - Ⓜ Incident Command Post
  - Ⓜ Mobile Weather Unit
  - Ⓜ Repeater
  - Ⓜ Water Source
  - )) Division Break
  - || Branch Break
  - Uncontrolled Fire Edge
  - - - Completed Hand Line
  - Fire Area
  - Bridge
  - ⋯ Trail

0 1 2 3 4 5 Miles

Prepared by: D Larson/PNW2 GISSS 11/17/16