

Page 1 Page 2

Branch I

Branch II

Page 3 Page 4

Div G

Page 6

Page 5

Page 7

Page 8

DIV F

DIV D

DIV A

**Legend**

- Dip Site
- Drop Point
- Helibase
- Helispot
- Mobile Weather Unit
- Repeater
- Water Source
- Division Break
- Branch Break
- Uncontrolled Fire Edge
- H - H Completed Hand Line
- Wilderness Boundary
- Fire Area

Big Hidden Dip

H-2

Lower Fox Dip

Upper Fox Dip

Fool Hen Dip

Rampart Dip

H-1

H-5

DP-38

DP-36

DP-35

H-3

Honeymoon

DP-43

GMD-1

SwtGrass

DP-45

Goat Creek

Deer Creek

DP-42

DP-33

DP-41

DP-41 RAWS

DP-54

DP-55

DP-52

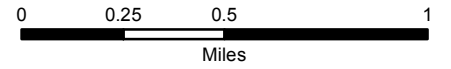
DP-32



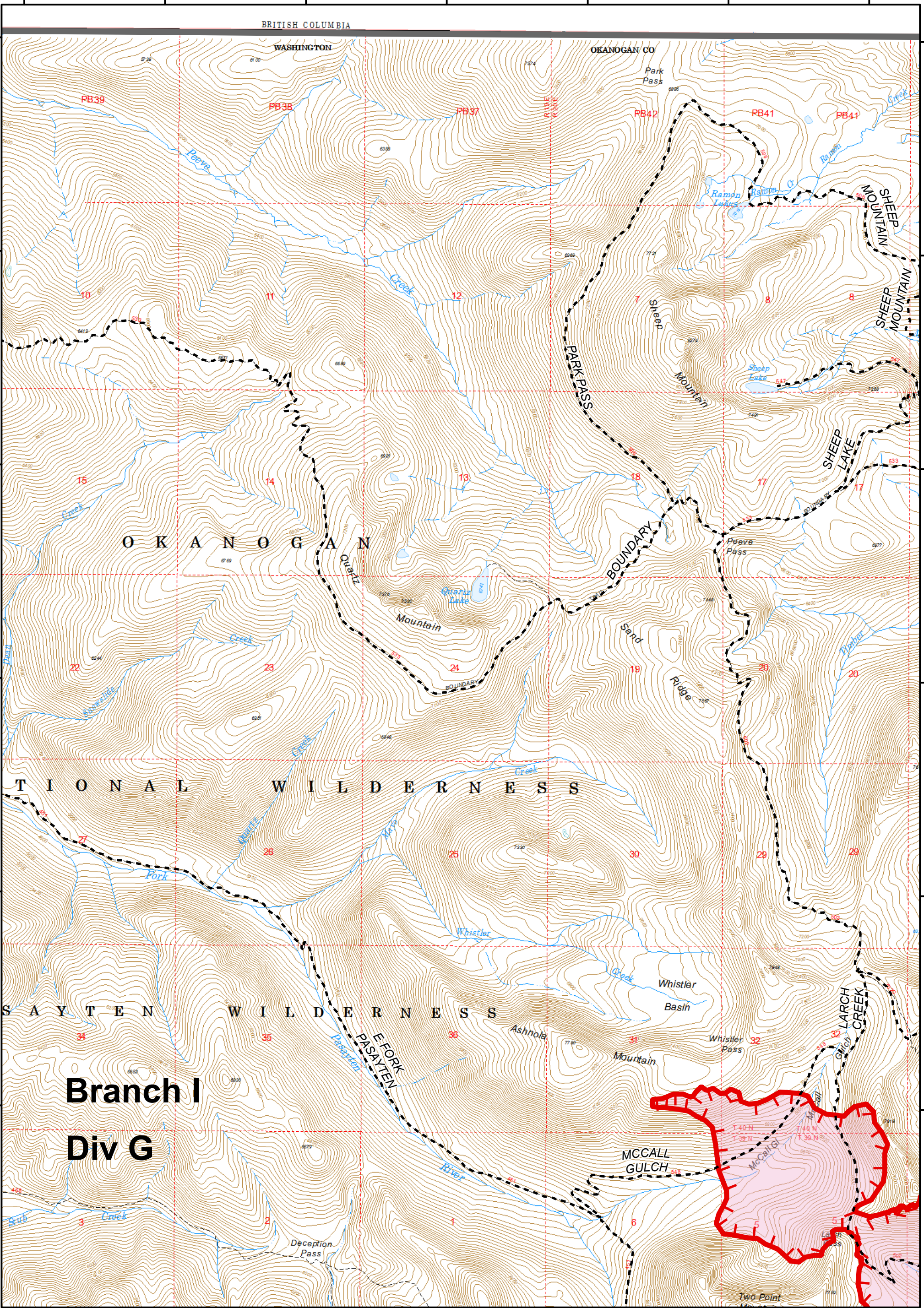


**Legend**

- Trail
- Uncontrolled Fire Edge
- Fire Area
- Wilderness Boundary



120°28'0"W 120°27'0"W 120°26'0"W 120°25'0"W 120°24'0"W 120°23'0"W 120°22'0"W



**Branch I**  
**Div G**

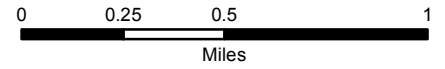
120°28'0"W 120°27'0"W 120°26'0"W 120°25'0"W 120°24'0"W 120°23'0"W 120°22'0"W



Diamond Creek Fire  
IAP Map  
Page 2  
WA-OWF-000267  
August 9, 2017  
12,525 Acres  
as of 8-8-17 0800

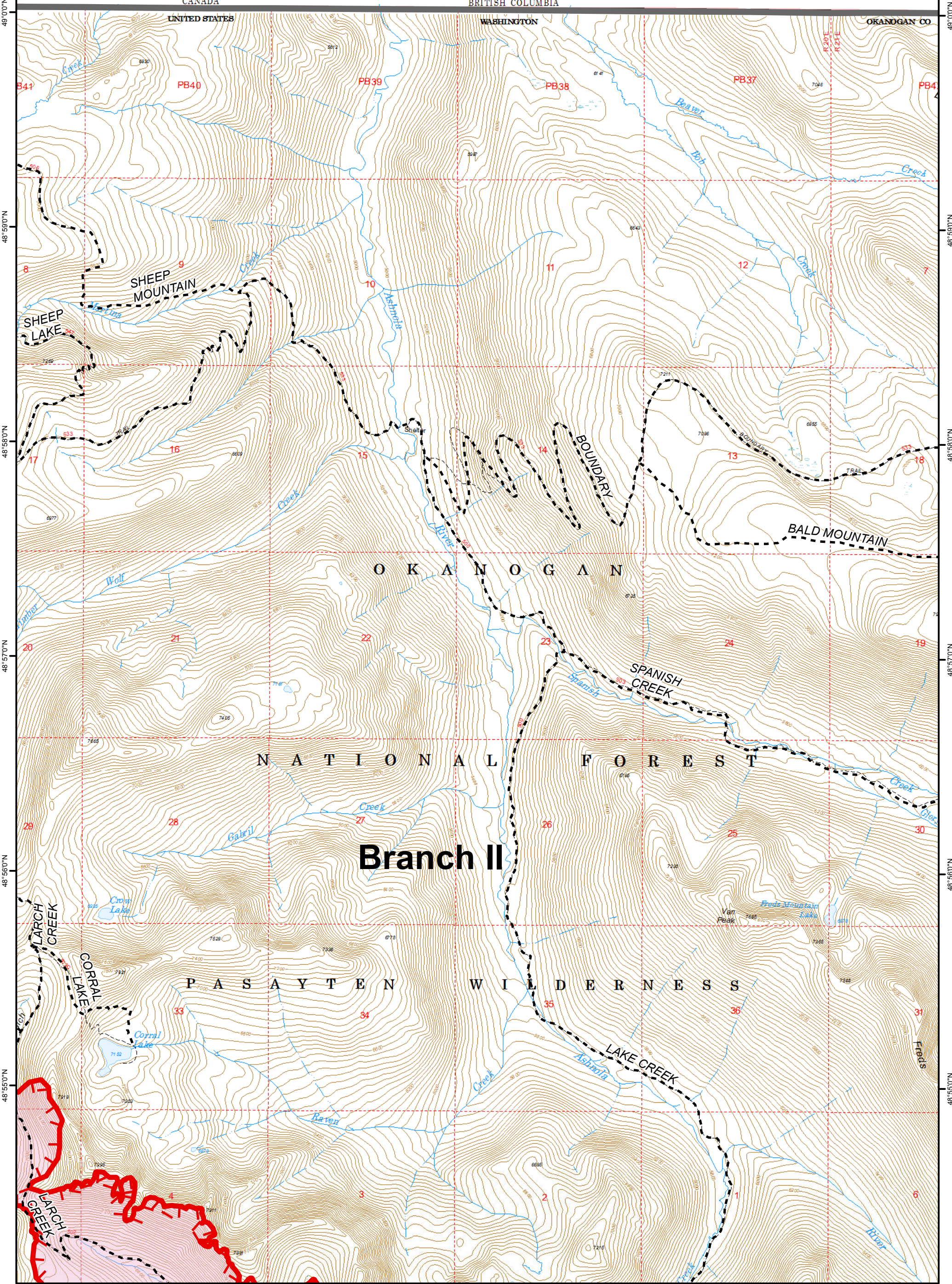
**Legend**

- Trail
- Uncontrolled Fire Edge
- Fire Area
- Wilderness Boundary



120°22'0"W 120°21'0"W 120°20'0"W 120°19'0"W 120°18'0"W 120°17'0"W 120°16'0"W

49°0'0"N 48°59'0"N 48°58'0"N 48°57'0"N 48°56'0"N 48°55'0"N

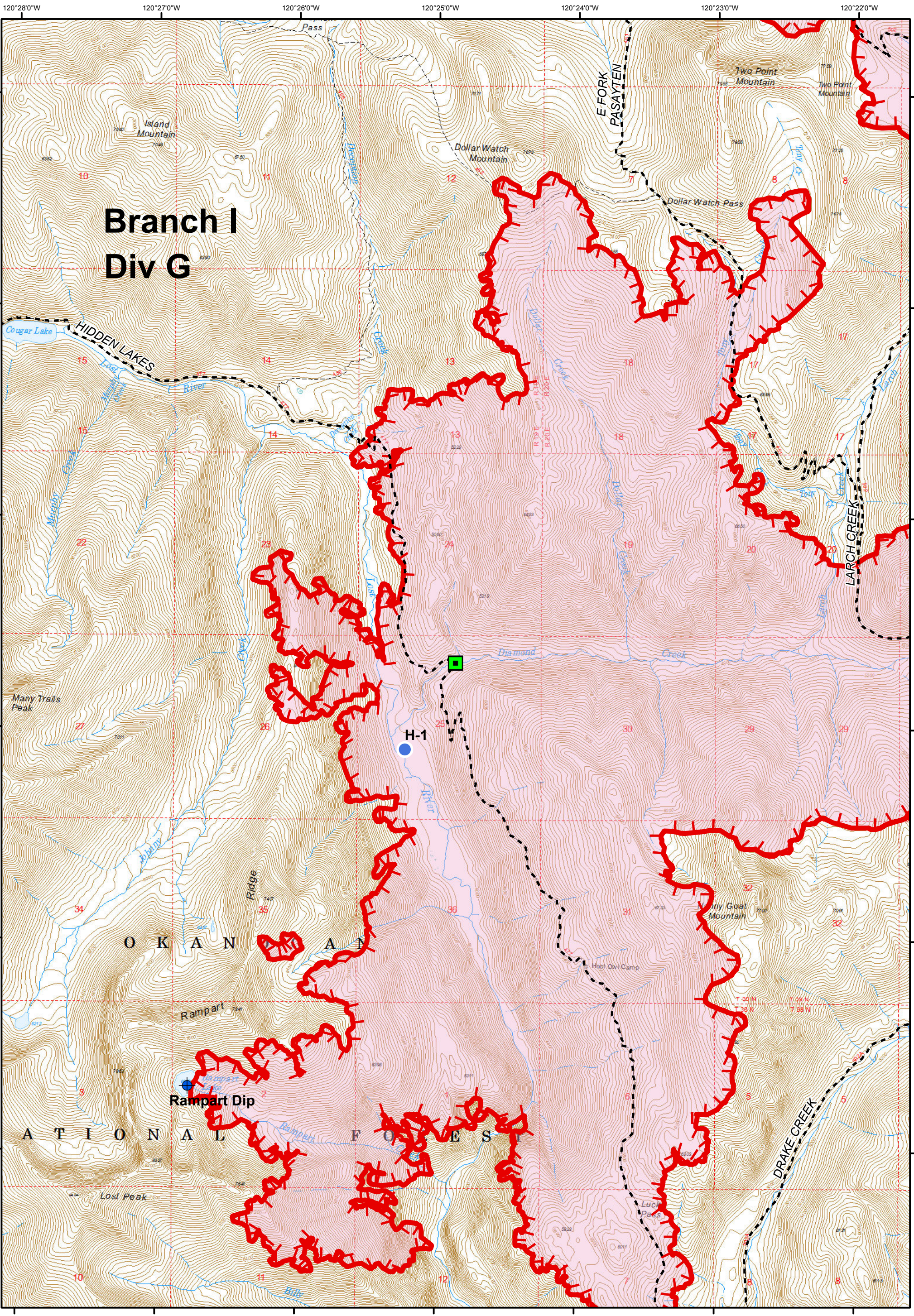
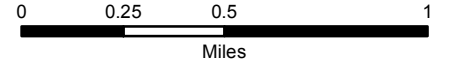


120°22'0"W 120°21'0"W 120°20'0"W 120°19'0"W 120°18'0"W 120°17'0"W 120°16'0"W



**Legend**

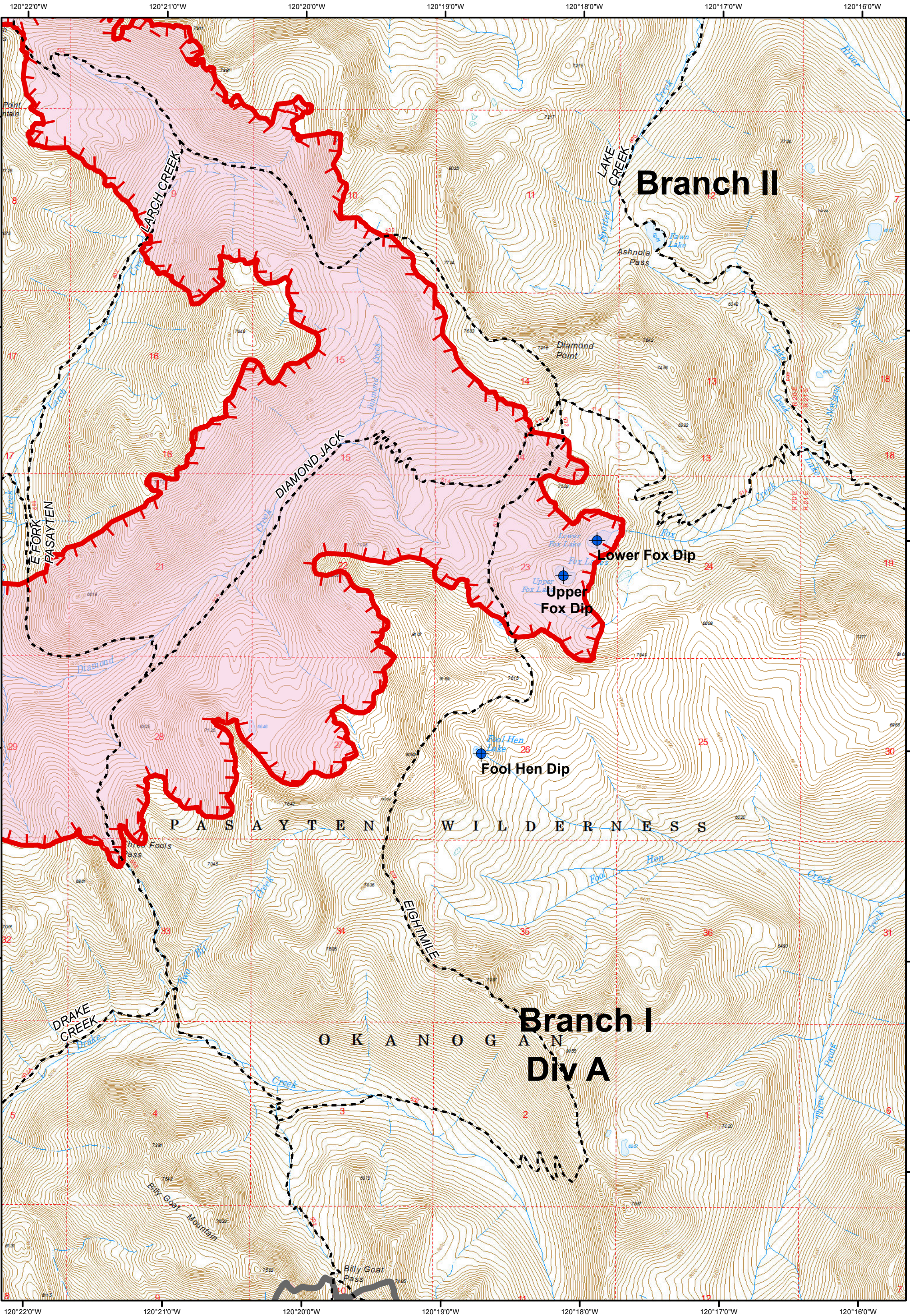
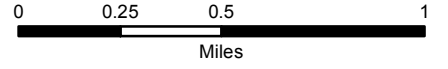
- Bridge
- Helispot
- Trail
- Fire Area
- Dip Site
- Uncontrolled Fire Edge
- Wilderness Boundary





**Legend**

- Dip Site
- Trail
- Uncontrolled Fire Edge
- Fire Area
- Wilderness Boundary

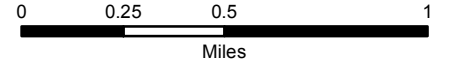




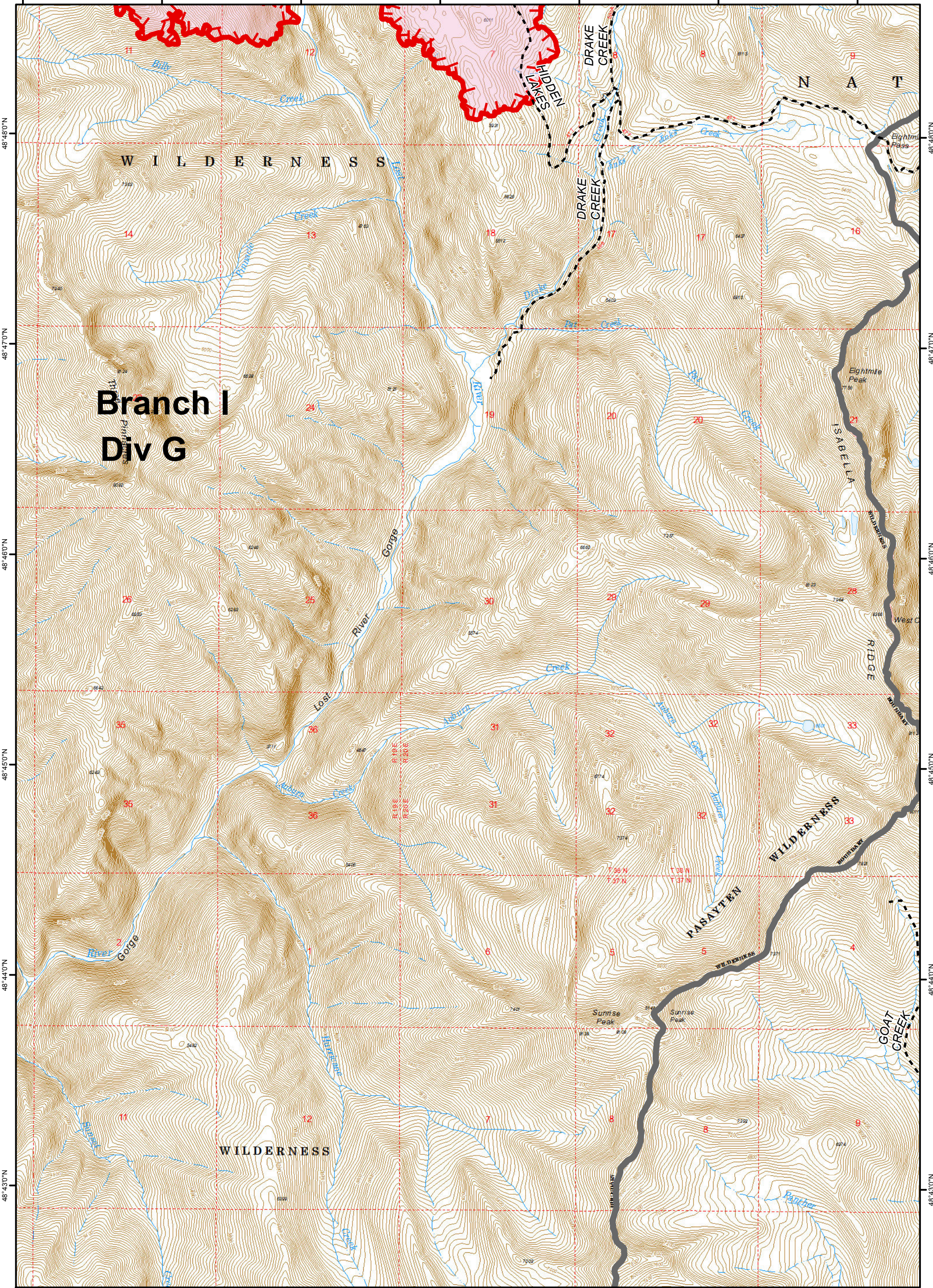
Diamond Creek Fire  
IAP Map  
Page 5  
WA-OWF-000267  
August 9, 2017  
12,525 Acres  
as of 8-8-17 0800

**Legend**

- Trail
- Uncontrolled Fire Edge
- Fire Area
- Wilderness Boundary



120°27'0"W 120°26'0"W 120°25'0"W 120°24'0"W 120°23'0"W 120°22'0"W 120°21'0"W



120°27'0"W 120°26'0"W 120°25'0"W 120°24'0"W 120°23'0"W 120°22'0"W 120°21'0"W

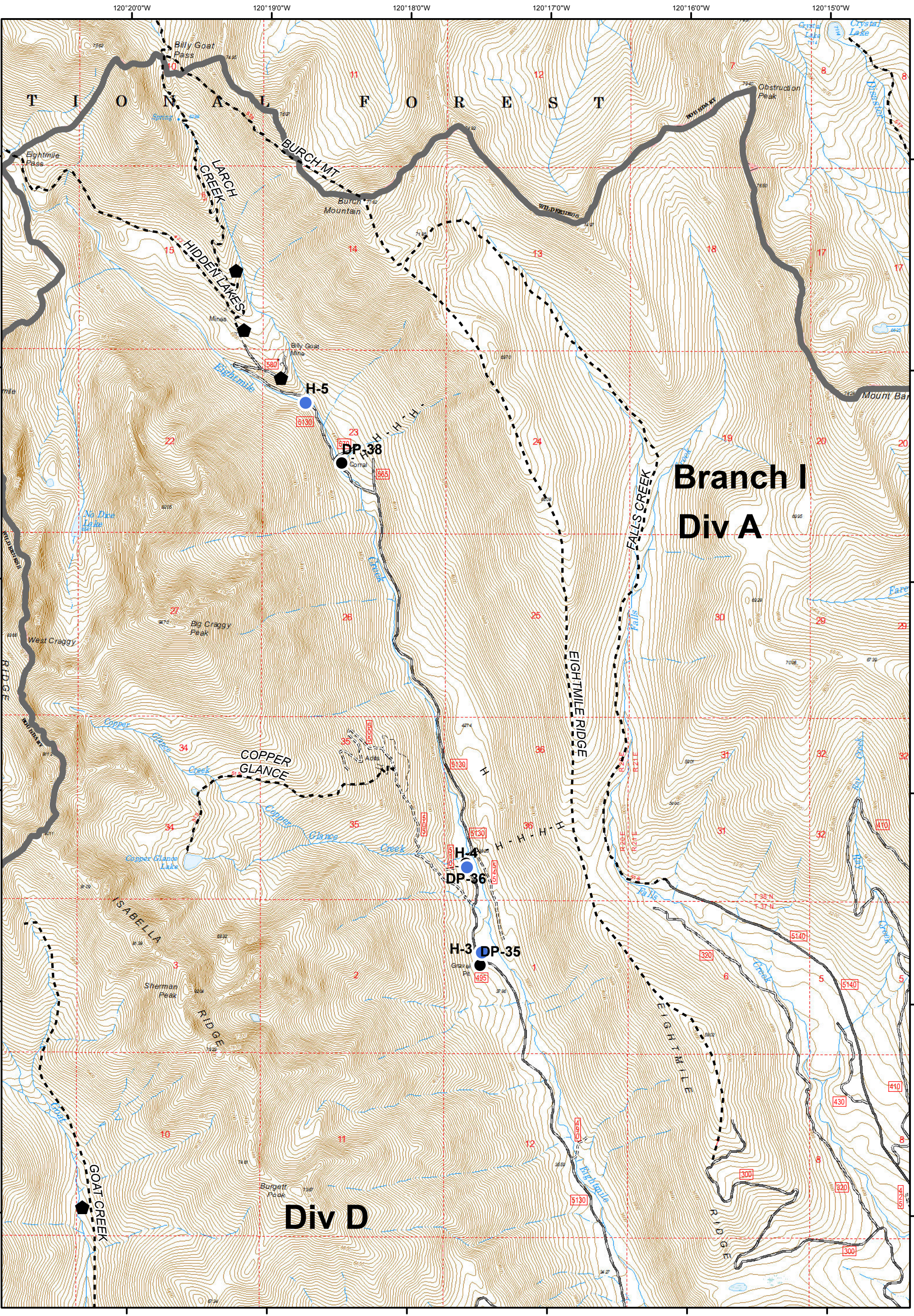
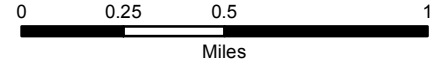
48°48'0"N  
48°47'0"N  
48°46'0"N  
48°45'0"N  
48°44'0"N  
48°43'0"N

48°48'0"N  
48°47'0"N  
48°46'0"N  
48°45'0"N  
48°44'0"N  
48°43'0"N



**Legend**

- Structures
- Helispot
- Trail
- Drop Point
- Completed Hand Line
- Wilderness Boundary



**Branch I  
 Div A**

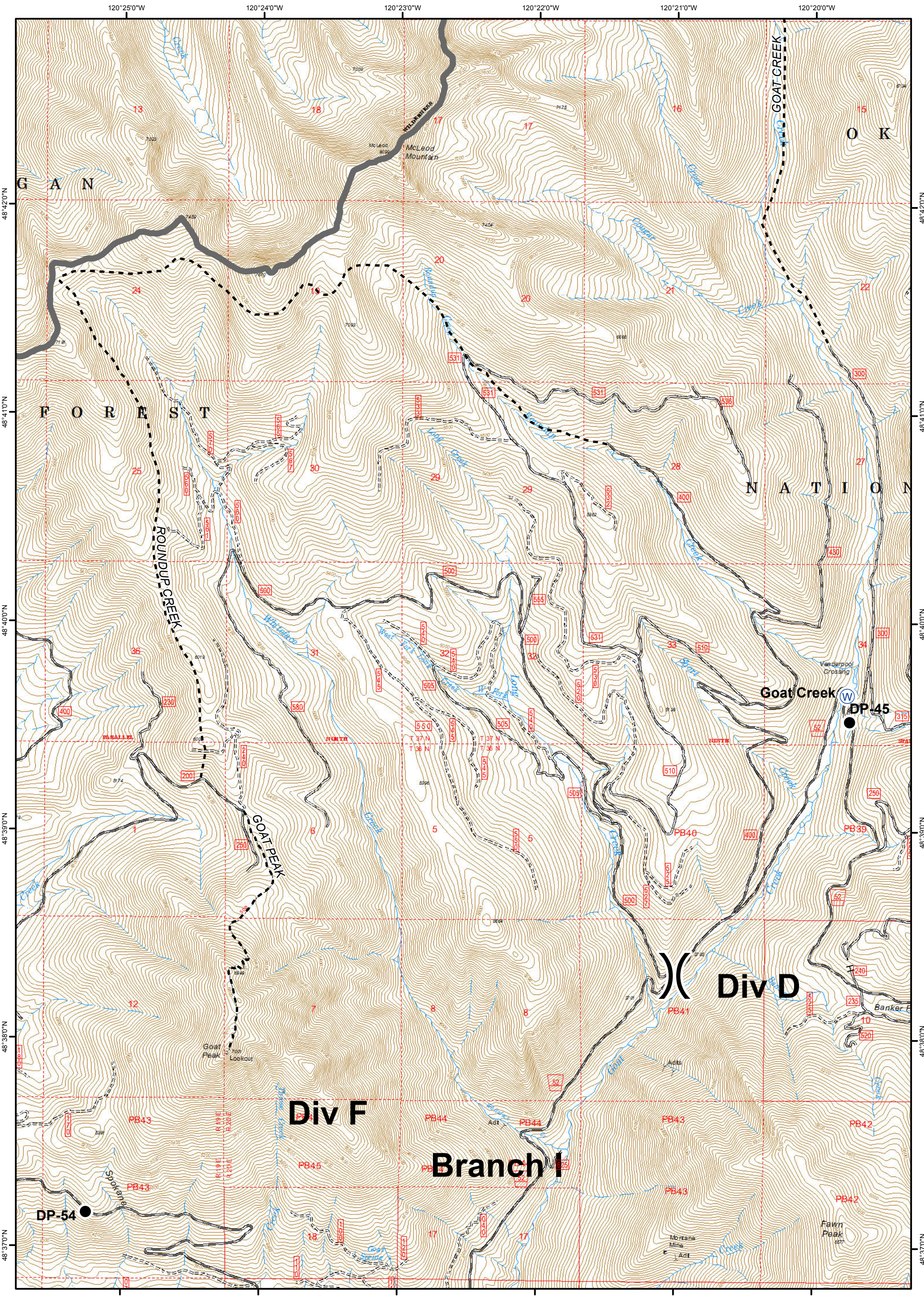
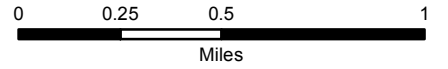
**Div D**



Diamond Creek Fire  
 IAP Map  
 Page 7  
 WA-OWF-000267  
 August 9, 2017  
 12,525 Acres  
 as of 8-8-17 0800

**Legend**

- Drop Point
- ⊙ Water Source
- Trail
- H - Completed Hand Line
- ⎓ Division Break
- ▭ Wilderness Boundary





Diamond Creek Fire  
 IAP Map  
 Page 8  
 WA-OWF-000267  
 August 9, 2017  
 12,525 Acres  
 as of 8-8-17 0800

**Legend**

- Drop Point
- Ⓜ Repeater
- Ⓜ Mobile Weather Unit
- Ⓜ Water Source
- ⎓ Division Break

