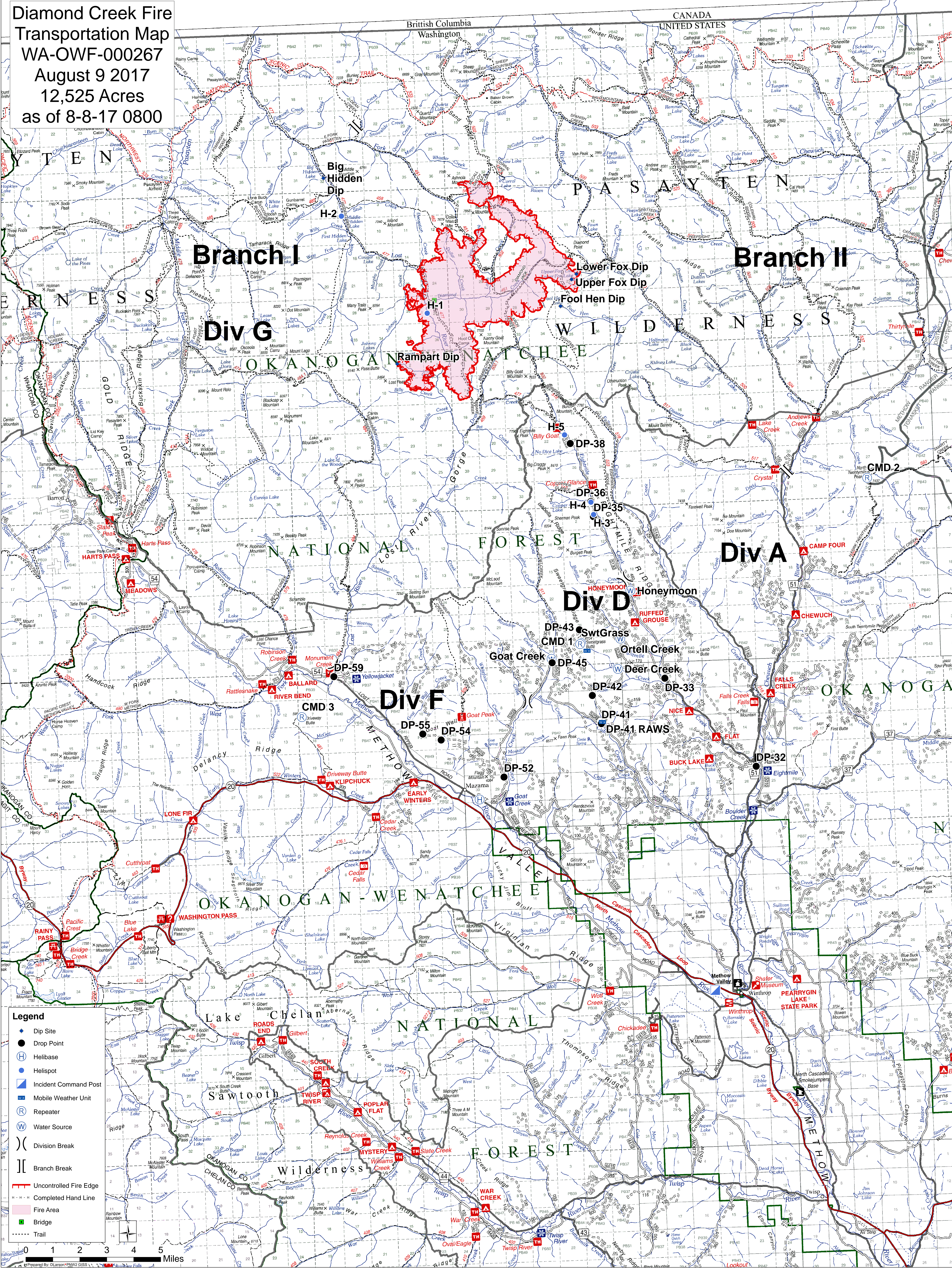


**Diamond Creek Fire  
Transportation Map  
WA-OWF-000267  
August 9 2017  
12,525 Acres  
as of 8-8-17 0800**



**Branch I**

**Branch II**

**Div G**

**Div A**

**Div F**

**Div D**

- Legend**
- ◆ Dip Site
  - Drop Point
  - ⊕ Helibase
  - Helispot
  - ⊠ Incident Command Post
  - ⊠ Mobile Weather Unit
  - ⊠ Repeater
  - ⊠ Water Source
  - ⊠ Division Break
  - ⊠ Branch Break
  - Uncontrolled Fire Edge
  - - - Completed Hand Line
  - Fire Area
  - Bridge
  - ⋯ Trail

0 1 2 3 4 5 Miles