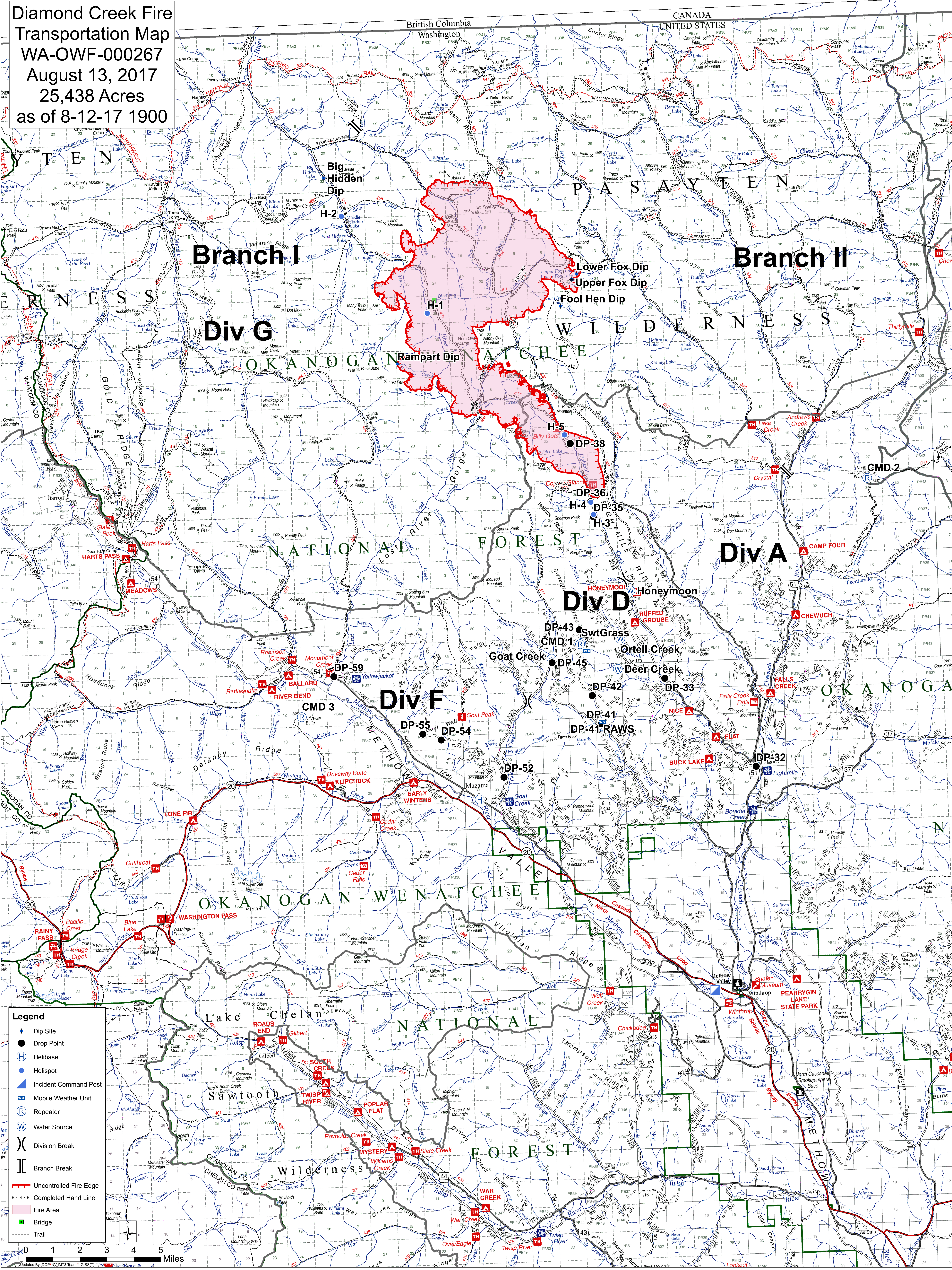


**Diamond Creek Fire  
Transportation Map  
WA-OWF-000267  
August 13, 2017  
25,438 Acres  
as of 8-12-17 1900**



- Legend**
- ◆ Dip Site
  - Drop Point
  - Ⓜ Helibase
  - Helispot
  - Ⓜ Incident Command Post
  - Ⓜ Mobile Weather Unit
  - Ⓜ Repeater
  - Ⓜ Water Source
  - Ⓜ Division Break
  - Ⓜ Branch Break
  - Uncontrolled Fire Edge
  - Completed Hand Line
  - Fire Area
  - Bridge
  - Ⓜ Trail

0 1 2 3 4 5 Miles

Updated by DOP, NV, IMT3 Team 4 GISST/1, 8/13/17