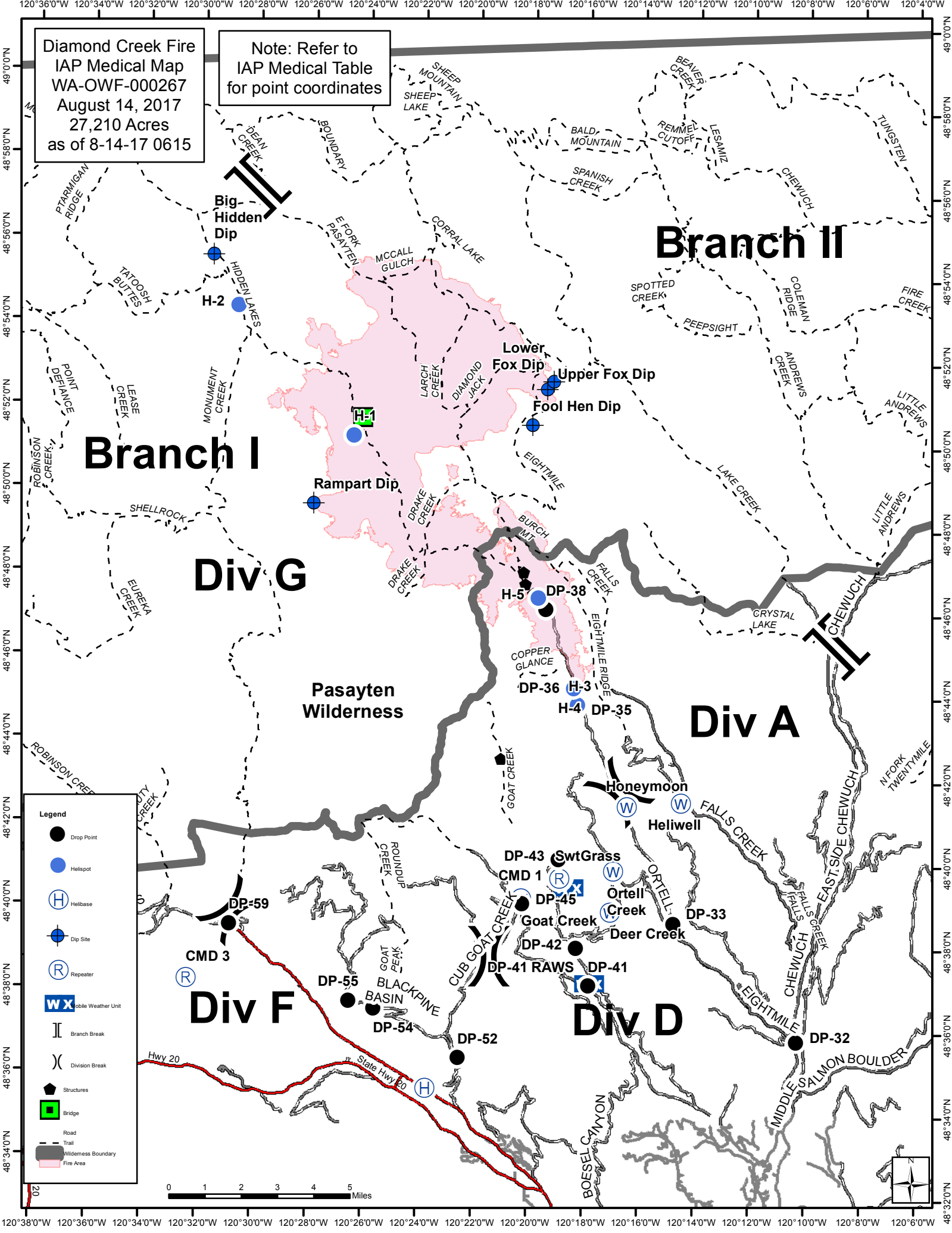


Diamond Creek Fire
 IAP Medical Map
 WA-OWF-000267
 August 14, 2017
 27,210 Acres
 as of 8-14-17 0615

Note: Refer to
 IAP Medical Table
 for point coordinates



- Legend**
- Drop Point
 - Heliport
 - ⊕ Helibase
 - ⊕ Dip Site
 - Ⓡ Repeater
 - WX Mobile Weather Unit
 - || Branch Break
 - () Division Break
 - Structures
 - Bridge
 - Road
 - - - Trail
 - ▭ Wilderness Boundary
 - ▭ Fire Area

0 1 2 3 4 5 Miles

