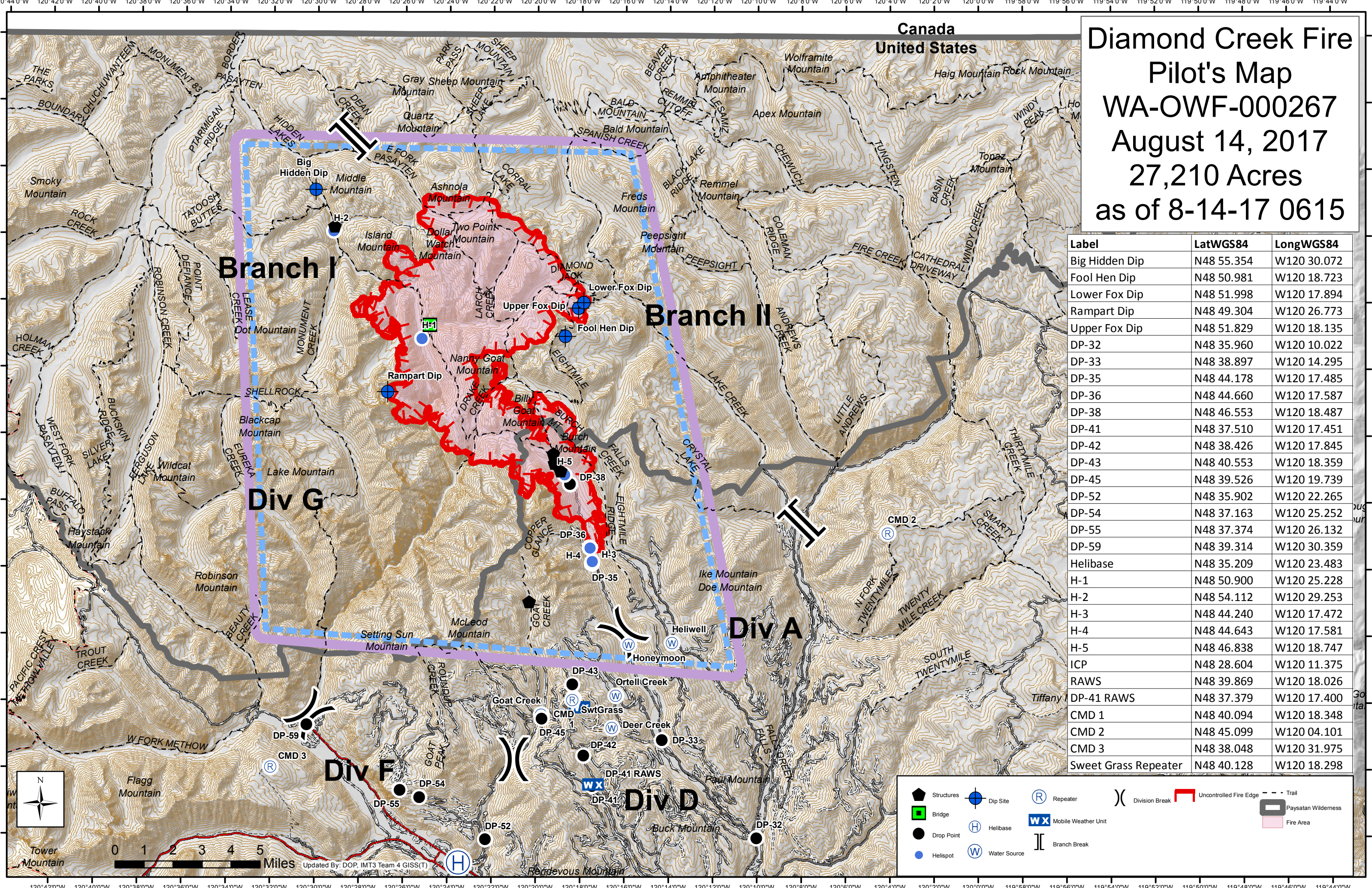


# Diamond Creek Fire Pilot's Map WA-OWF-000267 August 14, 2017 27,210 Acres as of 8-14-17 0615



Label	LatWGS84	LongWGS84
Big Hidden Dip	N48 55.354	W120 30.072
Fool Hen Dip	N48 50.981	W120 18.723
Lower Fox Dip	N48 51.998	W120 17.894
Rampart Dip	N48 49.304	W120 26.773
Upper Fox Dip	N48 51.829	W120 18.135
DP-32	N48 35.960	W120 10.022
DP-33	N48 38.897	W120 14.295
DP-35	N48 44.178	W120 17.485
DP-36	N48 44.660	W120 17.587
DP-38	N48 46.553	W120 18.487
DP-41	N48 37.510	W120 17.451
DP-42	N48 38.426	W120 17.845
DP-43	N48 40.553	W120 18.359
DP-45	N48 39.526	W120 19.739
DP-52	N48 35.902	W120 22.265
DP-54	N48 37.163	W120 25.252
DP-55	N48 37.374	W120 26.132
DP-59	N48 39.314	W120 30.359
Helibase	N48 35.209	W120 23.483
H-1	N48 50.900	W120 25.228
H-2	N48 54.112	W120 29.253
H-3	N48 44.240	W120 17.472
H-4	N48 44.643	W120 17.581
H-5	N48 46.838	W120 18.747
ICP	N48 28.604	W120 11.375
RAWS	N48 39.869	W120 18.026
DP-41 RAWS	N48 37.379	W120 17.400
CMD 1	N48 40.094	W120 18.348
CMD 2	N48 45.099	W120 04.101
CMD 3	N48 38.048	W120 31.975
Sweet Grass Repeater	N48 40.128	W120 18.298

■ Structures    ● Dip Site    Ⓡ Repeater    ⌋ Division Break    ▬ Uncontrolled Fire Edge    --- Trail  
■ Bridge    H Helibase    WX Mobile Weather Unit    ▬ Paysatan Wilderness    ■ Fire Area  
● Drop Point    W Water Source    || Branch Break

0 1 2 3 4 5 Miles  
 Tower Mountain  
 Updated By: DOP, IMT3 Team 4 GISS(T)