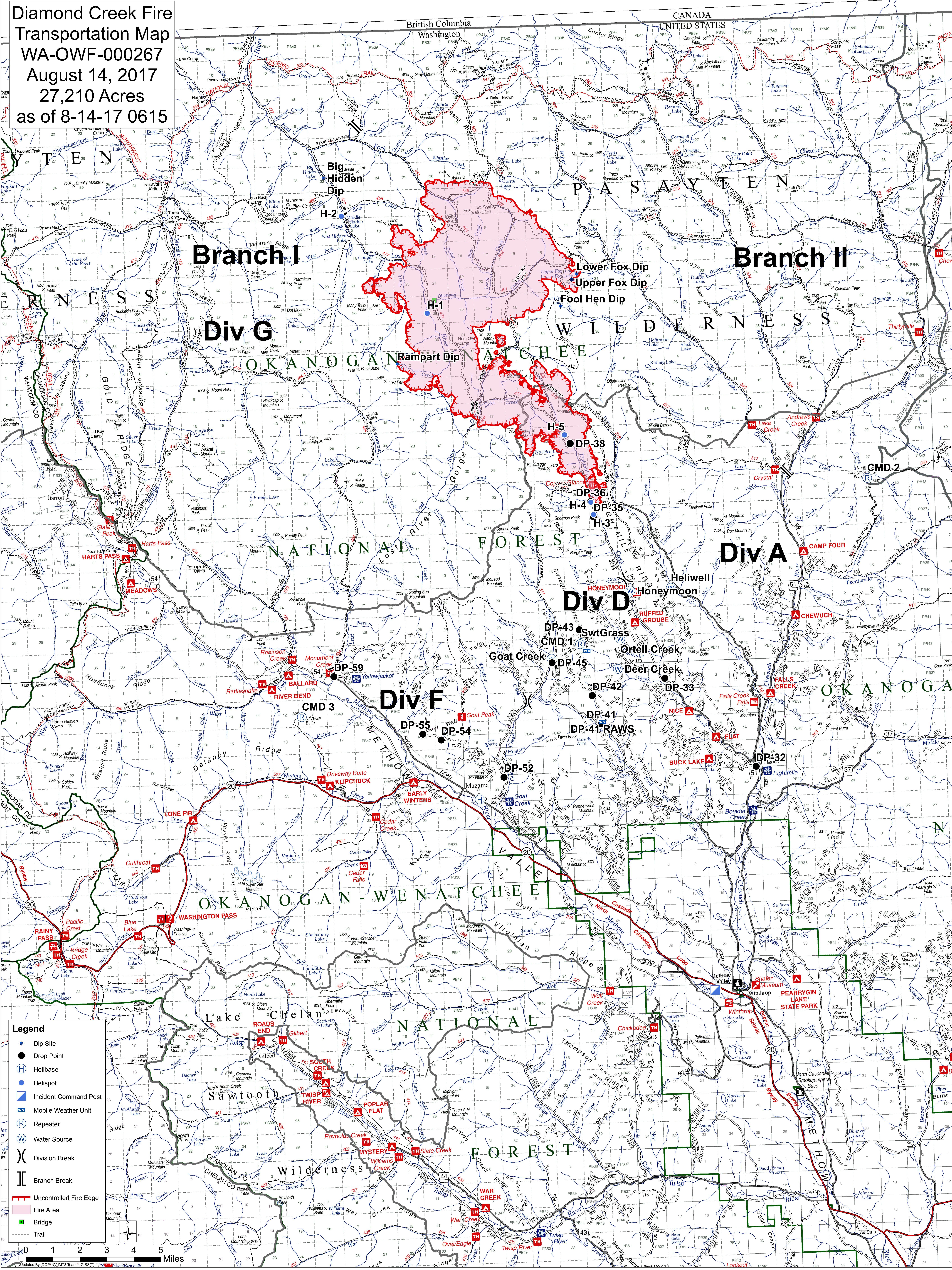


**Diamond Creek Fire
Transportation Map
WA-OWF-000267
August 14, 2017
27,210 Acres
as of 8-14-17 0615**



- Legend**
- ◆ Dip Site
 - Drop Point
 - ⊕ Helibase
 - Helispot
 - ⊠ Incident Command Post
 - ⊞ Mobile Weather Unit
 - ⊞ Repeater
 - ⊞ Water Source
 - ⊞ Division Break
 - ⊞ Branch Break
 - Uncontrolled Fire Edge
 - Fire Area
 - Bridge
 - ⋯ Trail

0 1 2 3 4 5 Miles

Updated by DOP, NV, IMT3 Team 4 GISST/1