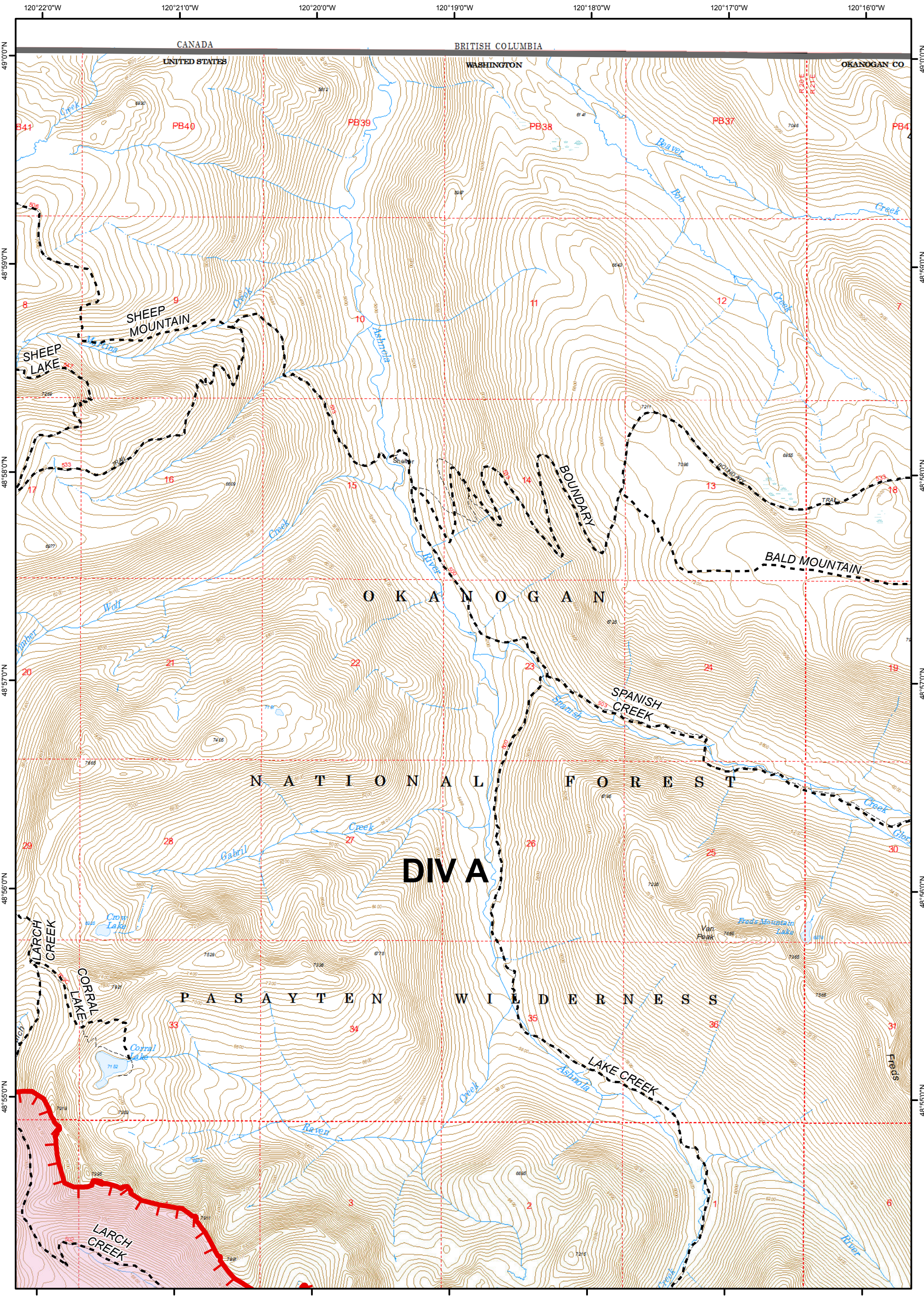
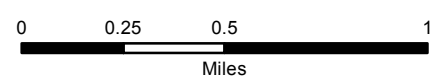


Diamond Creek Fire
IAP Map
Page 2
WA-OWF-000267
August 16, 2017
27,210 Acres
as of 8-14-17 @ 06:15

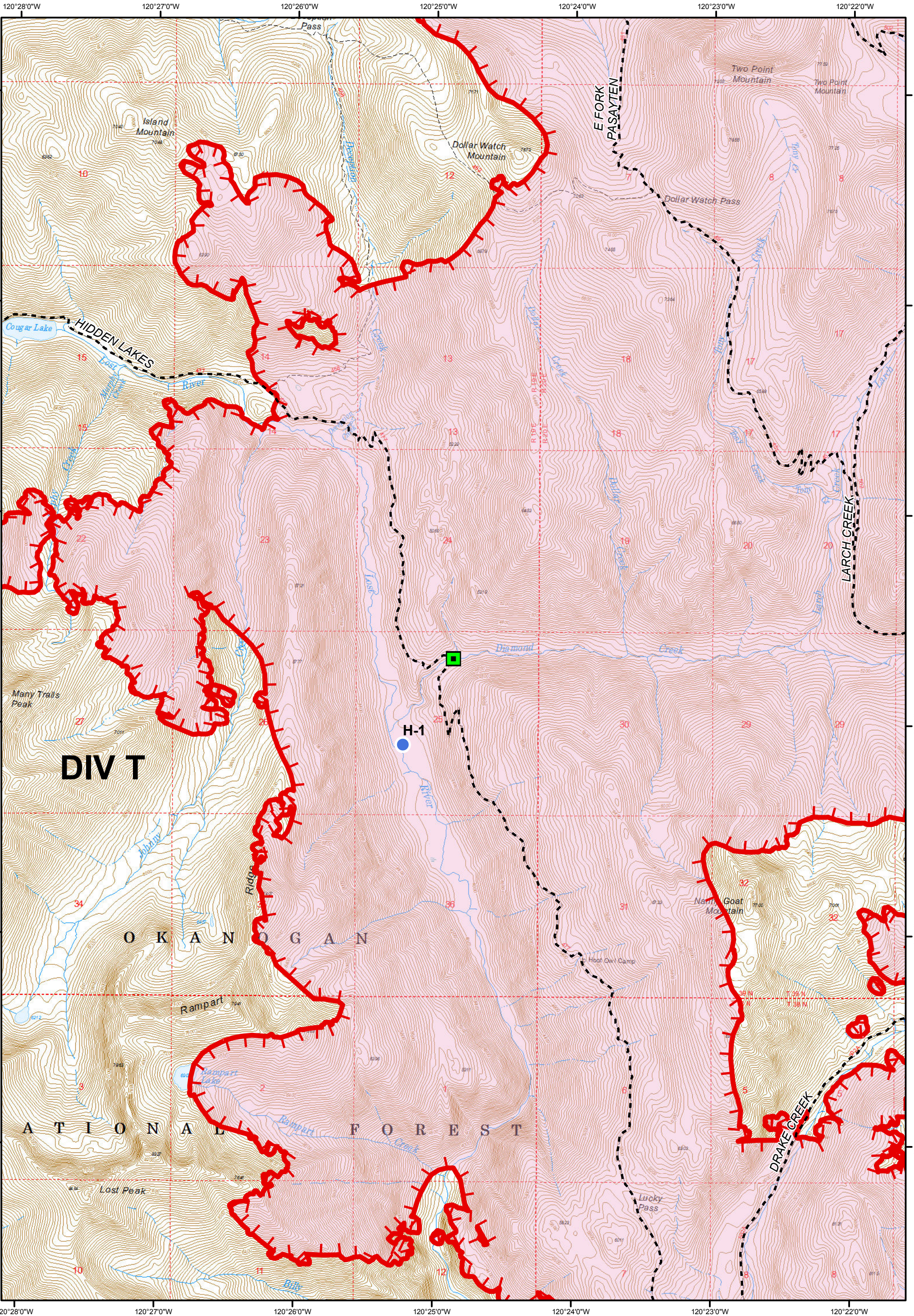
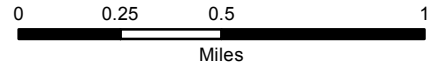
Legend

- Trail
- Uncontrolled Fire Edge
- Fire Area
- Wilderness Boundary



Legend

- Bridge
- Trail
- Fire Area
- Uncontrolled Fire Edge
- Wilderness Boundary
- Helispot



DIV T

O K A N O G A N

A T I O N A L F O R E S T

E F O R K
P A S A Y T E N

L A R C H C R E E K

D R A K E C R E E K

H-1

HIDDEN LAKES

Dollar Watch Mountain

Island Mountain

Two Point Mountain

Two Point Mountain

Dollar Watch Pass

Cougar Lake

Many Trails Peak

Rampart

Heat Owl Camp

Narrow Goat Mountain

Lucky Pass

Lost Peak

Rampart Lakes

Ridge

River

Diamond Creek

River

Creek

Creek

Creek

Creek

Creek

Pass

120°23'0"W

120°24'0"W

120°25'0"W

120°26'0"W

120°27'0"W

120°28'0"W

48°54'0"N

48°53'0"N

48°52'0"N

48°51'0"N

48°50'0"N

48°49'0"N

120°28'0"W

120°27'0"W

120°26'0"W

120°25'0"W

120°24'0"W

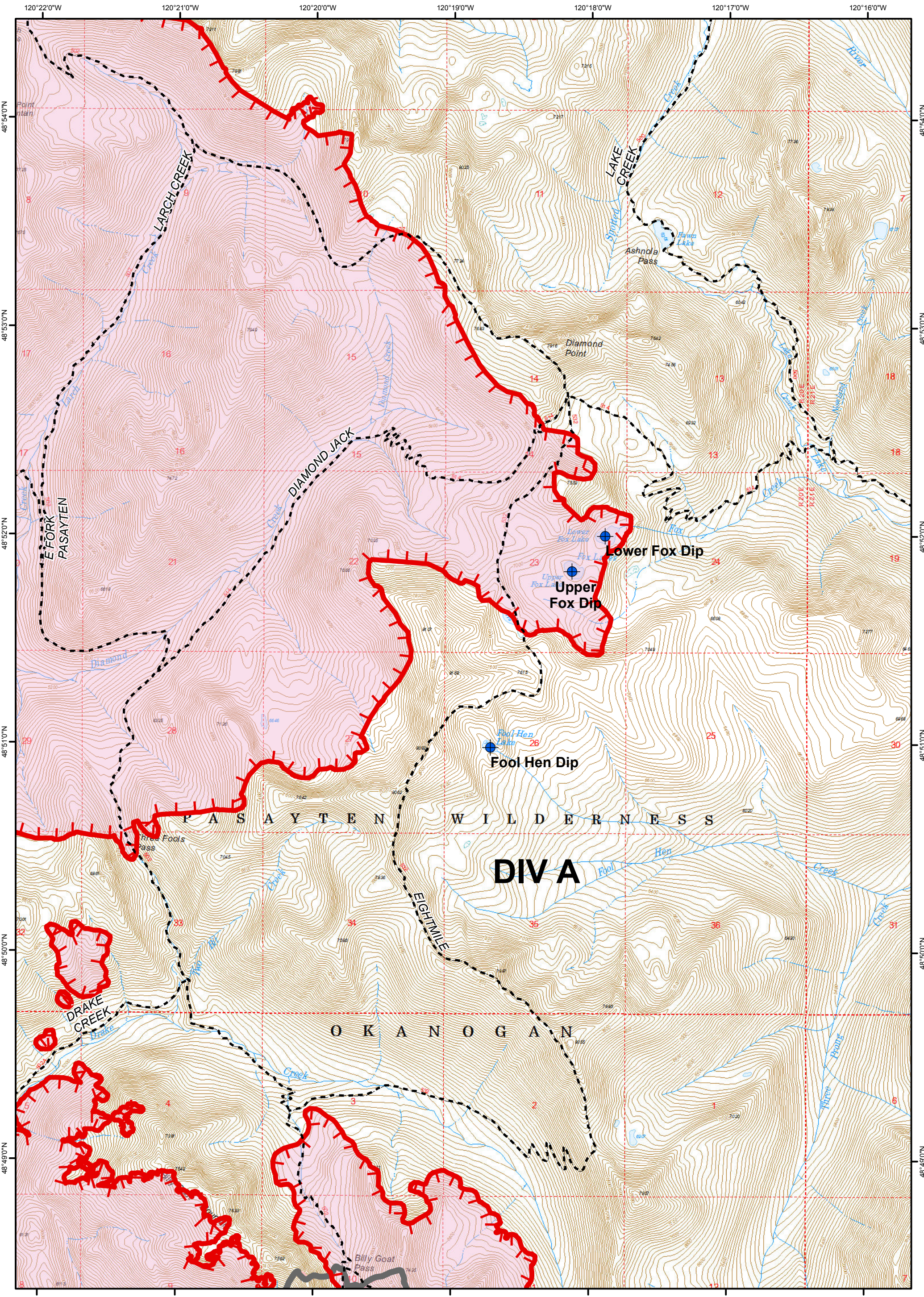
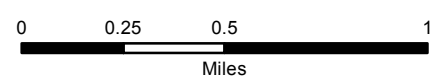
120°23'0"W

120°22'0"W

Diamond Creek Fire
IAP Map
Page 4
WA-OWF-000267
August 16, 2017
27,210 Acres
as of 8-14-17 @ 06:15

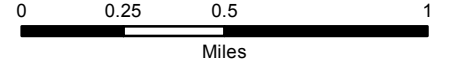
Legend

- Dip Site
- Trail
- Uncontrolled Fire Edge
- Fire Area
- Wilderness Boundary

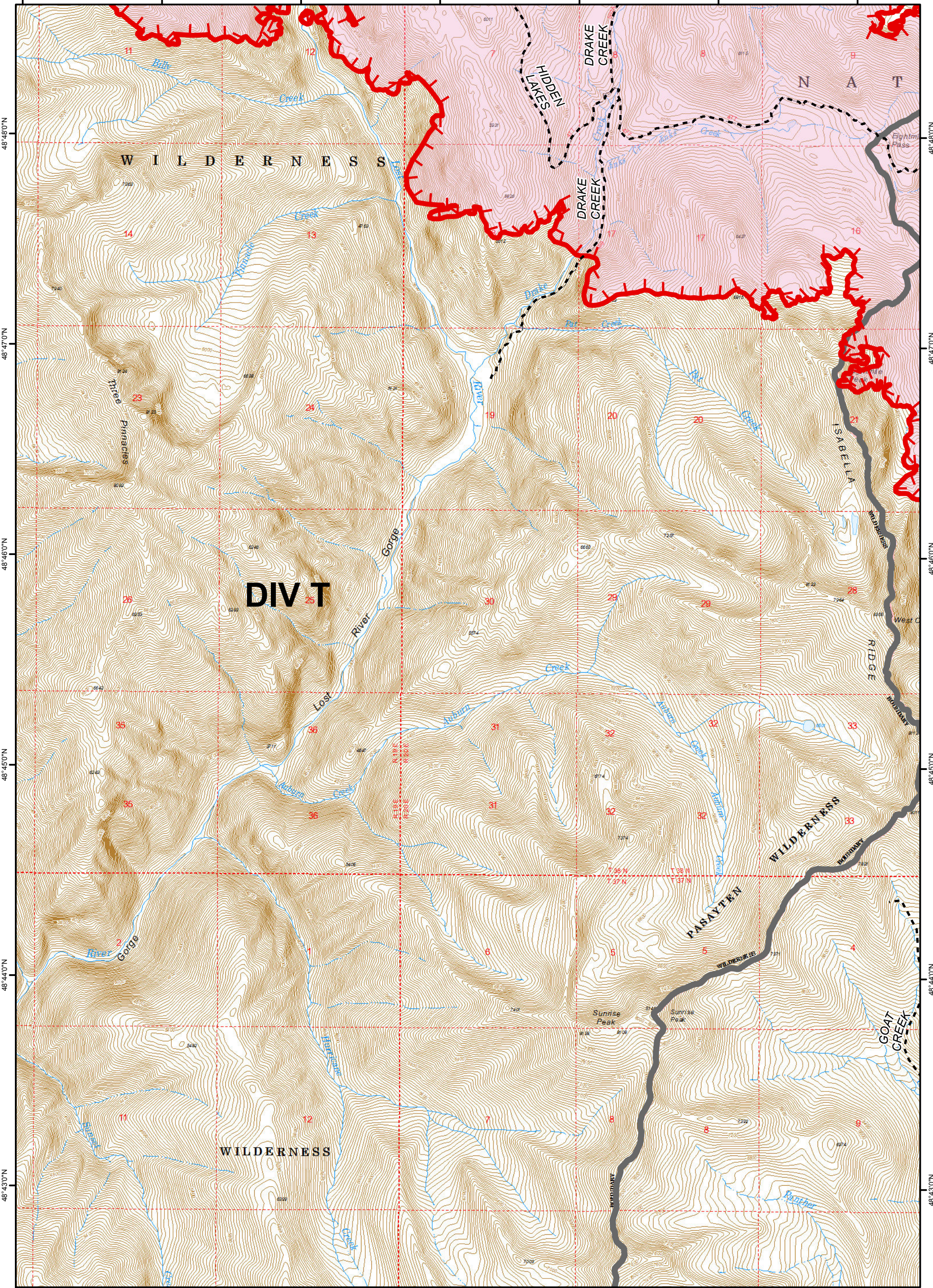


Legend

- Trail
- Uncontrolled Fire Edge
- Fire Area
- Wilderness Boundary



120°27'0"W 120°26'0"W 120°25'0"W 120°24'0"W 120°23'0"W 120°22'0"W 120°21'0"W



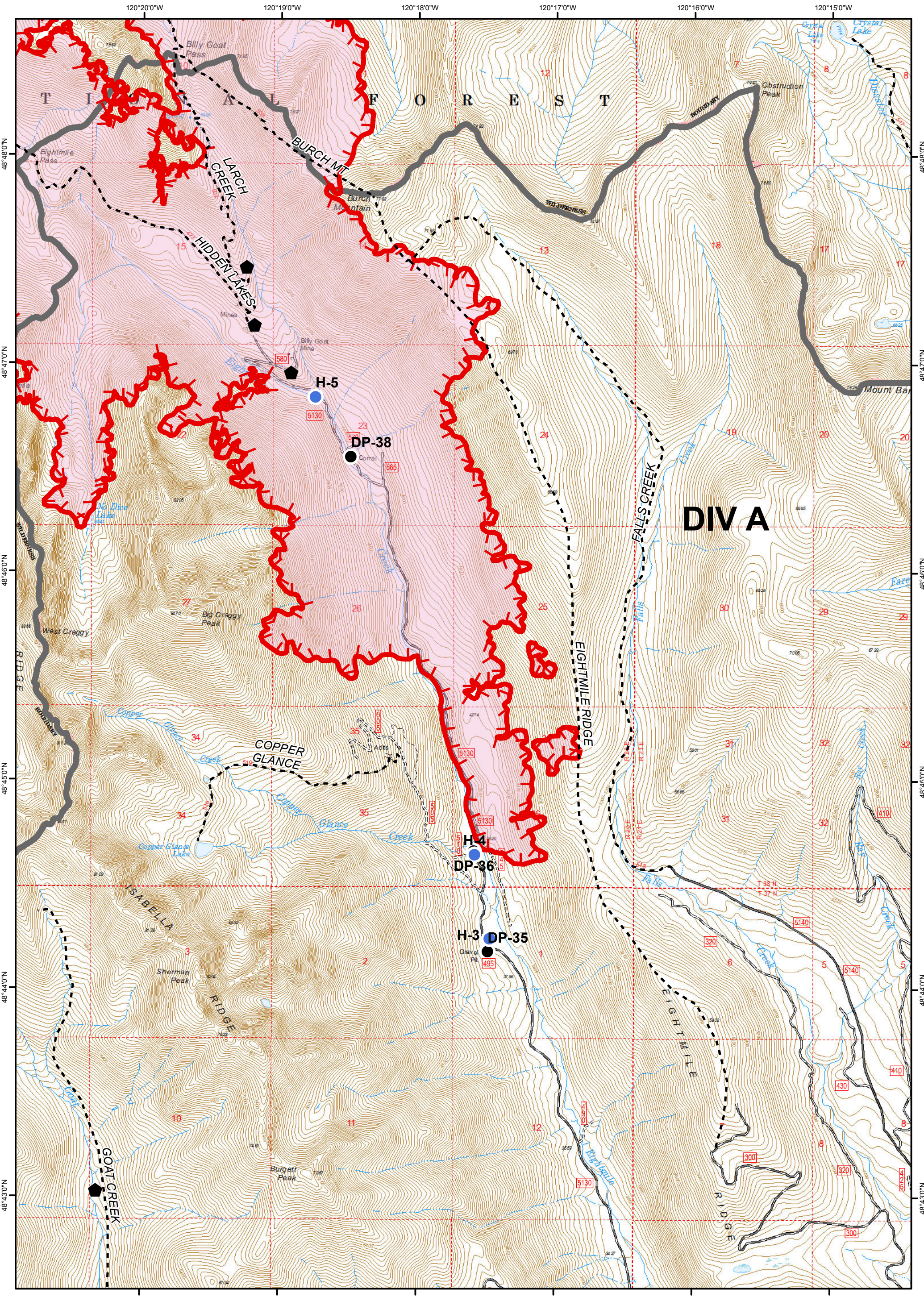
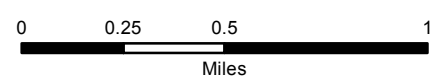
120°27'0"W 120°26'0"W 120°25'0"W 120°24'0"W 120°23'0"W 120°22'0"W 120°21'0"W

48°48'0"N
48°47'0"N
48°46'0"N
48°45'0"N
48°44'0"N
48°43'0"N

48°48'0"N
48°47'0"N
48°46'0"N
48°45'0"N
48°44'0"N
48°43'0"N

Legend

- Structures
- Helispot
- Trail
- Uncontrolled Fire Edge
- Fire Area
- Wilderness Boundary
- Drop Point

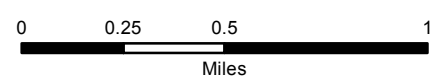


DIV A

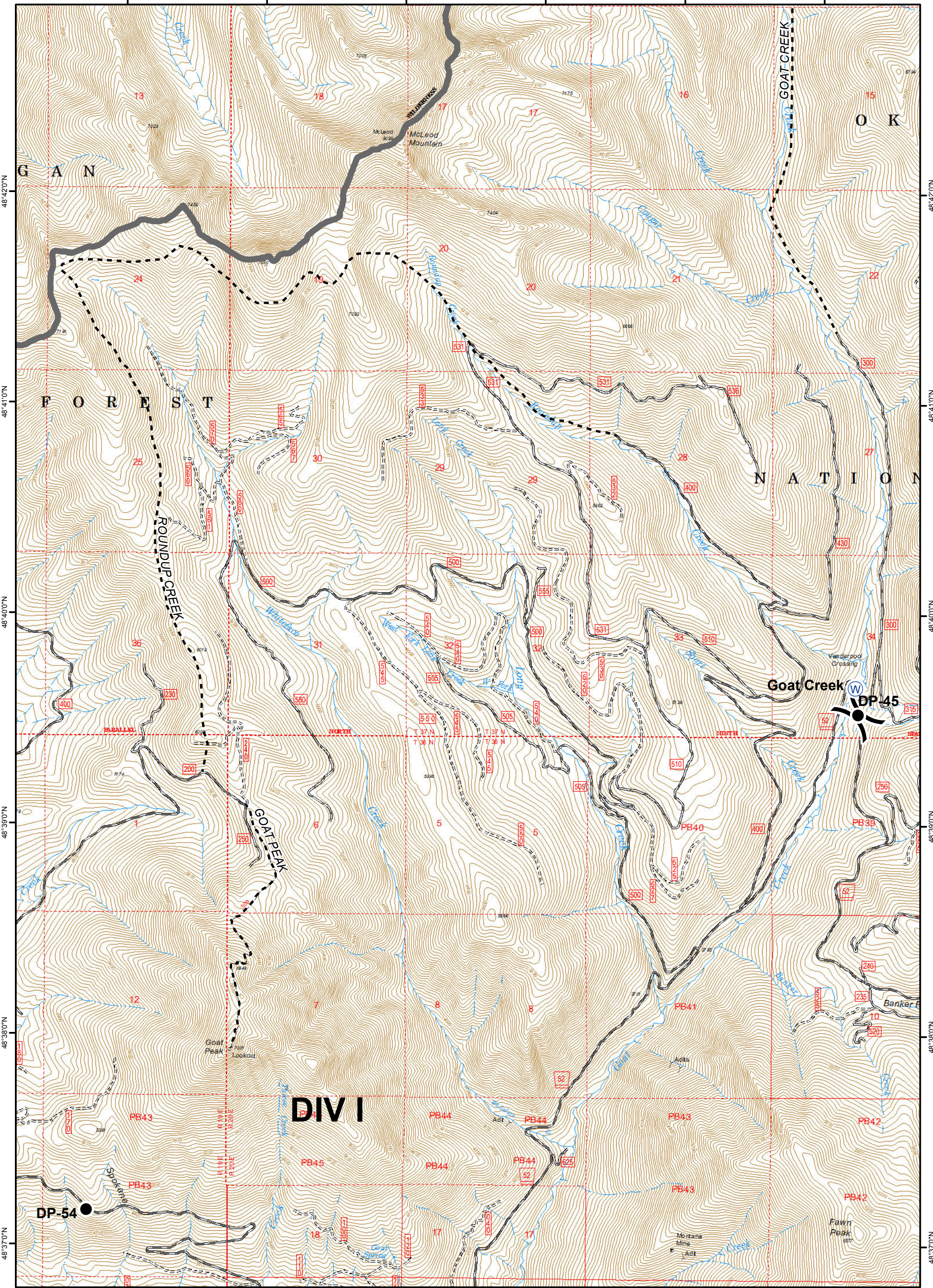
Diamond Creek Fire
 IAP Map
 Page 7
 WA-OWF-000267
 August 16, 2017
 27,210 Acres
 as of 8-14-17 @ 06:15

Legend

- Drop Point
- Water Source
- Trail
- Wilderness Boundary
- Division Break



120°25'0"W 120°24'0"W 120°23'0"W 120°22'0"W 120°21'0"W 120°20'0"W

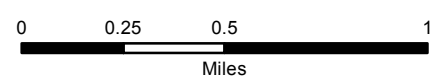


120°25'0"W 120°24'0"W 120°23'0"W 120°22'0"W 120°21'0"W 120°20'0"W

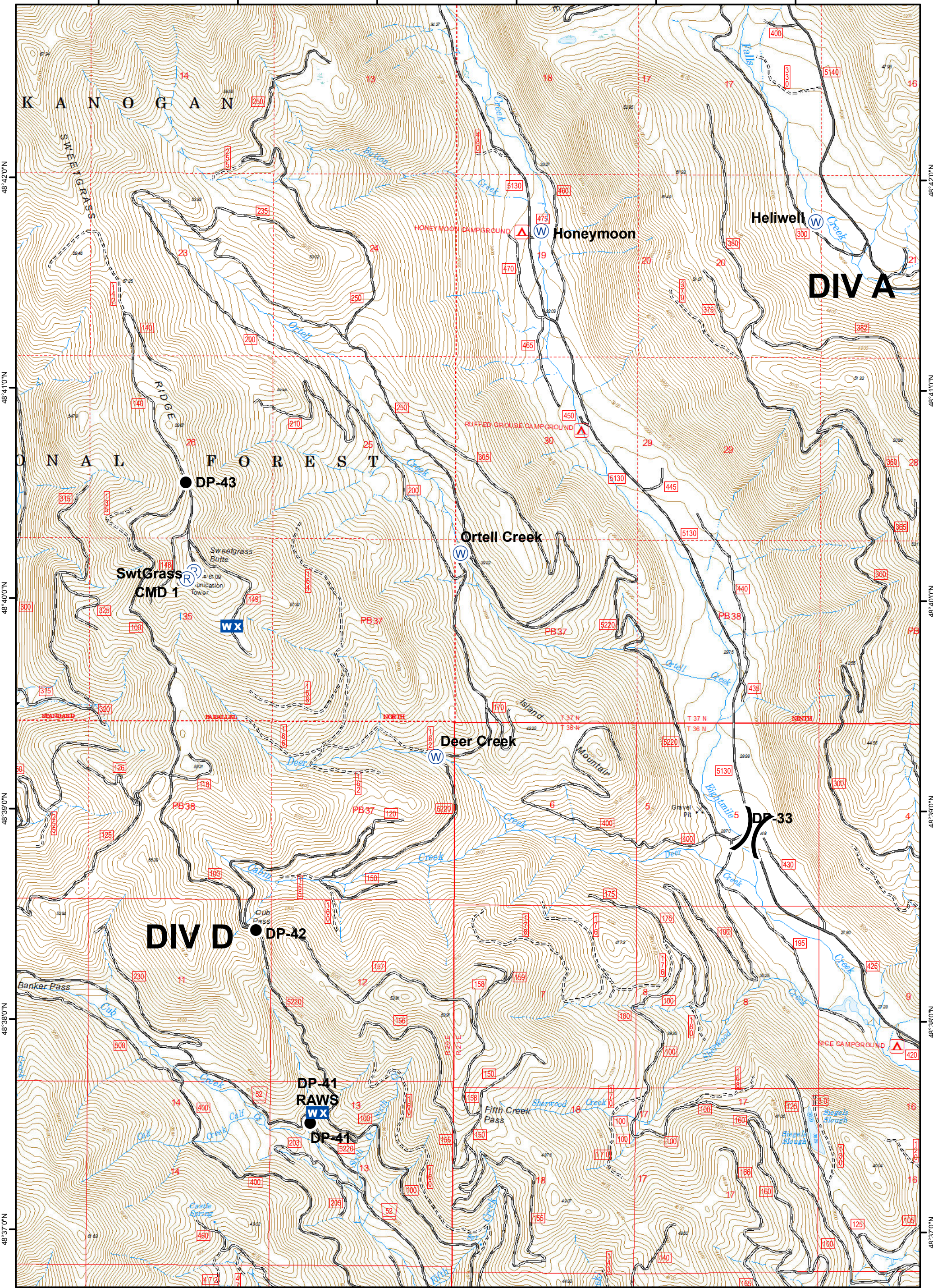
Diamond Creek Fire
 IAP Map
 Page 8
 WA-OWF-000267
 August 16, 2017
 27,210 Acres
 as of 8-14-17 @ 06:15

Legend

- Drop Point
- Ⓡ Repeater
- Ⓜ Mobile Weather Unit
- Ⓜ Water Source
- ⎓ Division Break



120°19'0"W 120°18'0"W 120°17'0"W 120°16'0"W 120°15'0"W 120°14'0"W



120°19'0"W 120°18'0"W 120°17'0"W 120°16'0"W 120°15'0"W 120°14'0"W

48°42'0"N
48°41'0"N
48°40'0"N
48°39'0"N
48°38'0"N
48°37'0"N

48°42'0"N
48°41'0"N
48°40'0"N
48°39'0"N
48°38'0"N
48°37'0"N