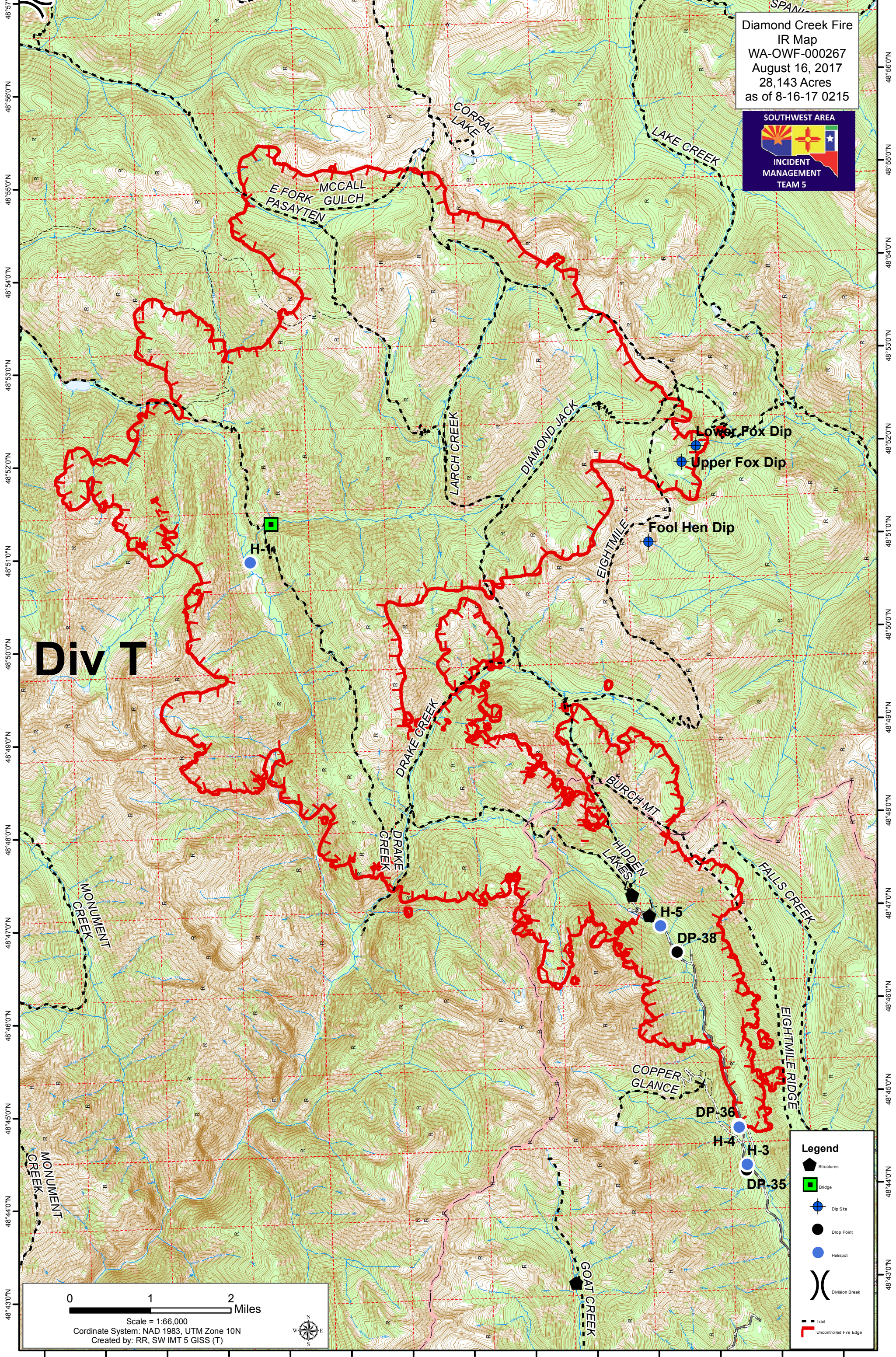


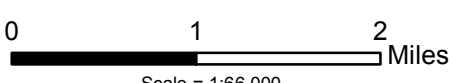
120°28'0"W 120°27'0"W 120°26'0"W 120°25'0"W 120°24'0"W 120°23'0"W 120°22'0"W 120°21'0"W 120°20'0"W 120°19'0"W 120°18'0"W 120°17'0"W 120°16'0"W 120°15'0"W



Diamond Creek Fire
IR Map
WA-OWF-000267
August 16, 2017
28,143 Acres
as of 8-16-17 0215



Div T



Scale = 1:66,000
Coordinate System: NAD 1983, UTM Zone 10N
Created by: RR, SW IMT 5 GISS (T)



Legend

- Structures
- Bridge
- Dip Site
- Drop Point
- Helispot
- Division Break
- Uncontrolled Fire Edge

120°29'0"W 120°28'0"W 120°27'0"W 120°26'0"W 120°25'0"W 120°24'0"W 120°23'0"W 120°22'0"W 120°21'0"W 120°20'0"W 120°19'0"W 120°18'0"W 120°17'0"W 120°16'0"W

48°57'0"N
48°56'0"N
48°55'0"N
48°54'0"N
48°53'0"N
48°52'0"N
48°51'0"N
48°50'0"N
48°49'0"N
48°48'0"N
48°47'0"N
48°46'0"N
48°45'0"N
48°44'0"N
48°43'0"N

SPAN
48°56'0"N
48°55'0"N
48°54'0"N
48°53'0"N
48°52'0"N
48°51'0"N
48°50'0"N
48°49'0"N
48°48'0"N
48°47'0"N
48°46'0"N
48°45'0"N
48°44'0"N
48°43'0"N