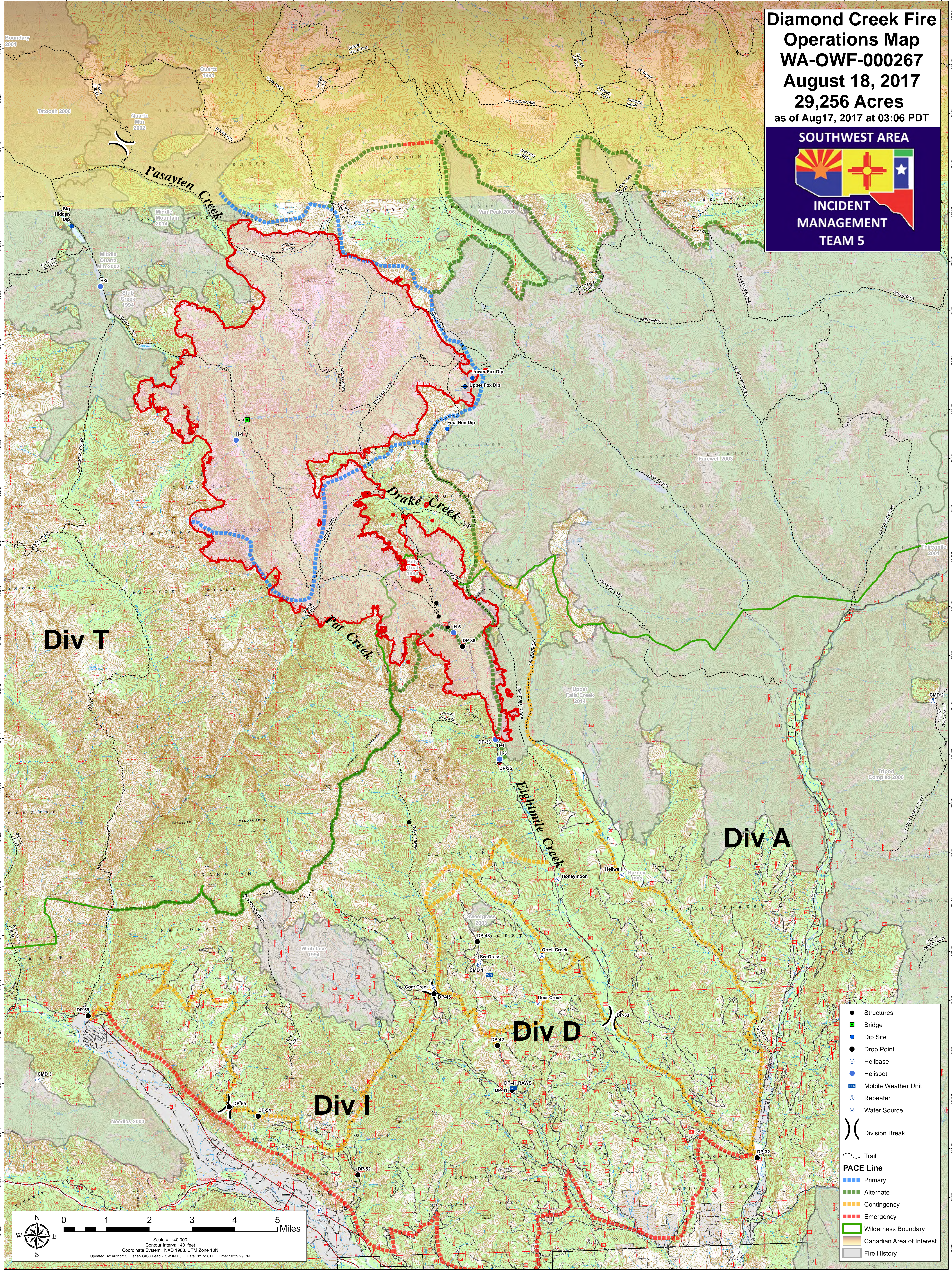


**Diamond Creek Fire  
Operations Map  
WA-OWF-000267  
August 18, 2017  
29,256 Acres  
as of Aug17, 2017 at 03:06 PDT**

**SOUTHWEST AREA**



**INCIDENT  
MANAGEMENT  
TEAM 5**



**Div T**

**Div A**

**Div D**

**Div I**

- Structures
- Bridge
- ◆ Dip Site
- Drop Point
- ⊕ Helibase
- Helispot
- ⊞ Mobile Weather Unit
- ⊞ Repeater
- ⊞ Water Source
- ) Division Break
- Trail
- PACE Line**
- Primary
- Alternate
- Contingency
- Emergency
- Wilderness Boundary
- Canadian Area of Interest
- Fire History

Scale = 1:40,000  
Contour Interval: 40 feet  
Coordinate System: NAD 1983, UTM Zone 10N  
Updated By: Author: S. Fisher- GISS Lead - SW IMT 5 Date: 8/17/2017 Time: 10:39:29 PM