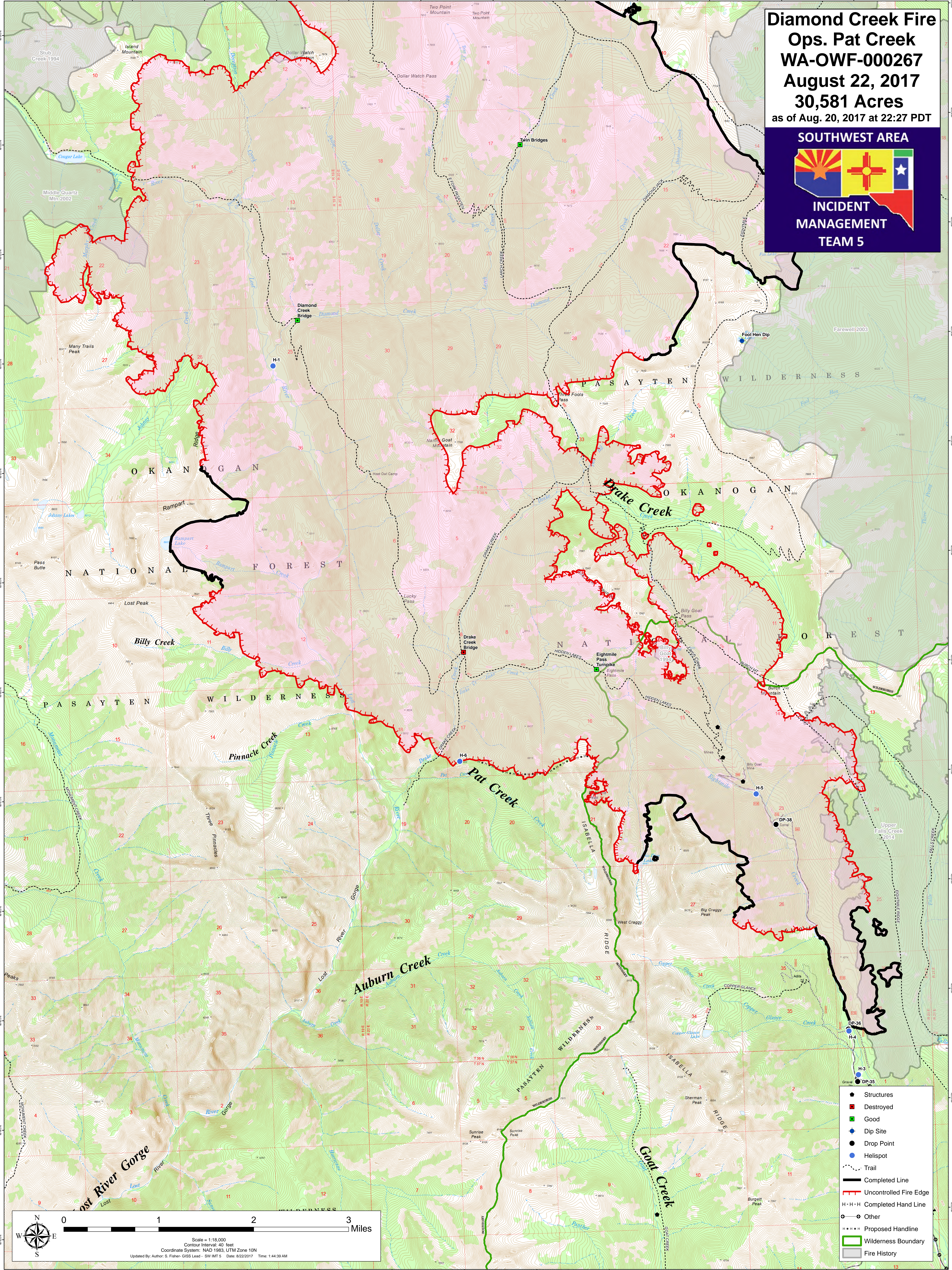


**Diamond Creek Fire**  
**Ops. Pat Creek**  
**WA-OWF-000267**  
**August 22, 2017**  
**30,581 Acres**  
 as of Aug. 20, 2017 at 22:27 PDT

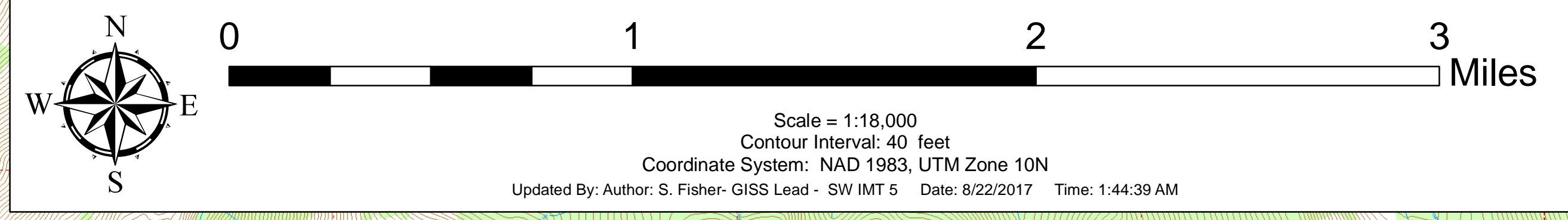
**SOUTHWEST AREA**



**INCIDENT  
 MANAGEMENT  
 TEAM 5**



- Structures
- Destroyed
- Good
- ◆ Dip Site
- Drop Point
- Helispot
- Trail
- Completed Line
- Uncontrolled Fire Edge
- H-H-H Completed Hand Line
- Other
- H-H-H Proposed Handline
- ▭ Wilderness Boundary
- ▭ Fire History



Scale = 1:18,000  
 Contour Interval: 40 feet  
 Coordinate System: NAD 1983, UTM Zone 10N  
 Updated By: Author: S. Fisher- GISS Lead - SW IMT 5 Date: 8/22/2017 Time: 1:44:39 AM