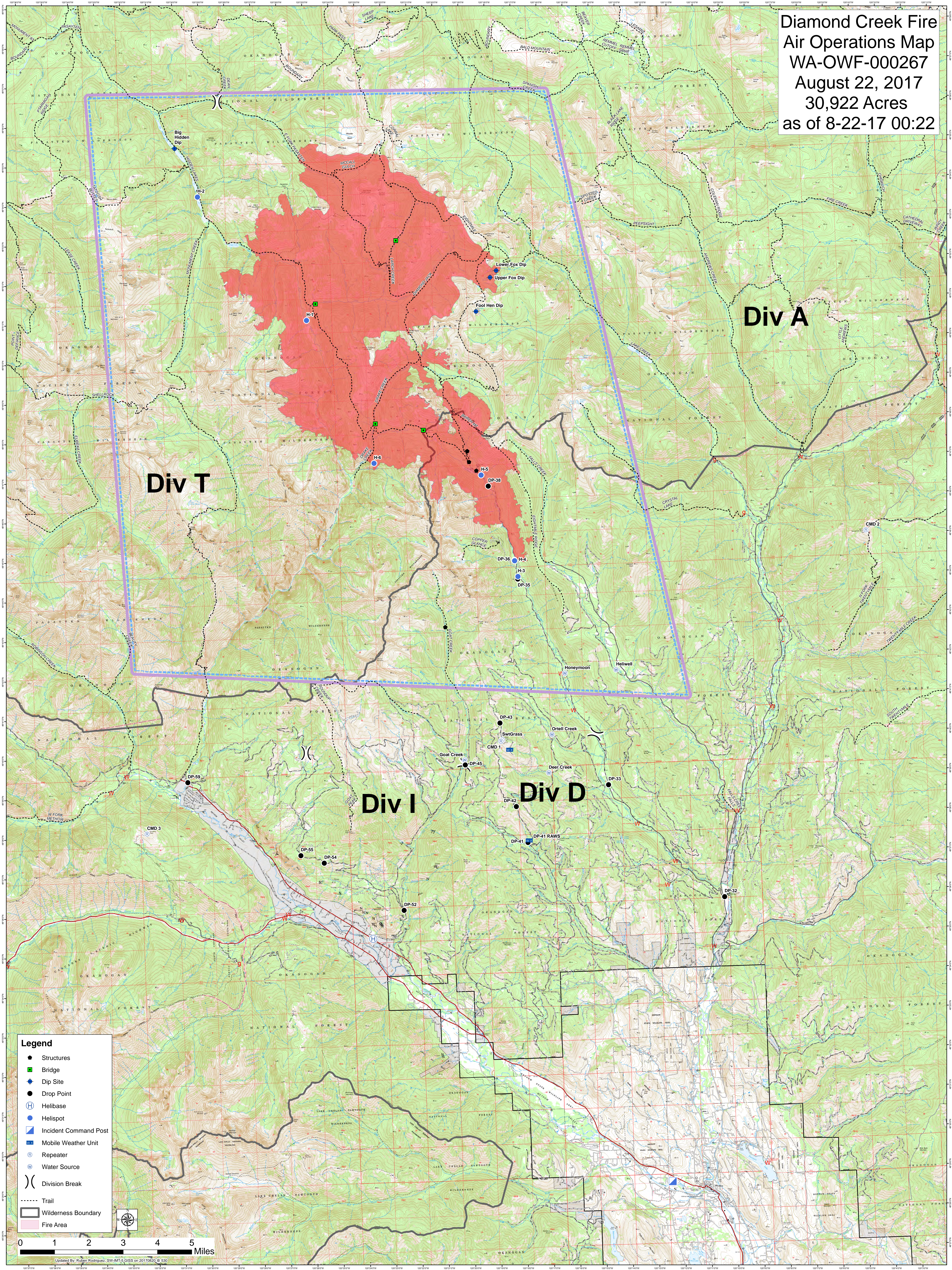


**Diamond Creek Fire
Air Operations Map
WA-OWF-000267
August 22, 2017
30,922 Acres
as of 8-22-17 00:22**



Div T

Div A

Div I

Div D

Legend

- Structures
- Bridge
- ◆ Dip Site
- Drop Point
- ⊕ Helibase
- Helispot
- Incident Command Post
- Mobile Weather Unit
- ⊕ Repeater
- ⊕ Water Source
-) (Division Break
- Trail
- Wilderness Boundary
- Fire Area

0 1 2 3 4 5 Miles

Updated By: Ruben Rodriguez, SW.MT5.GISS on 20170820 @ 530