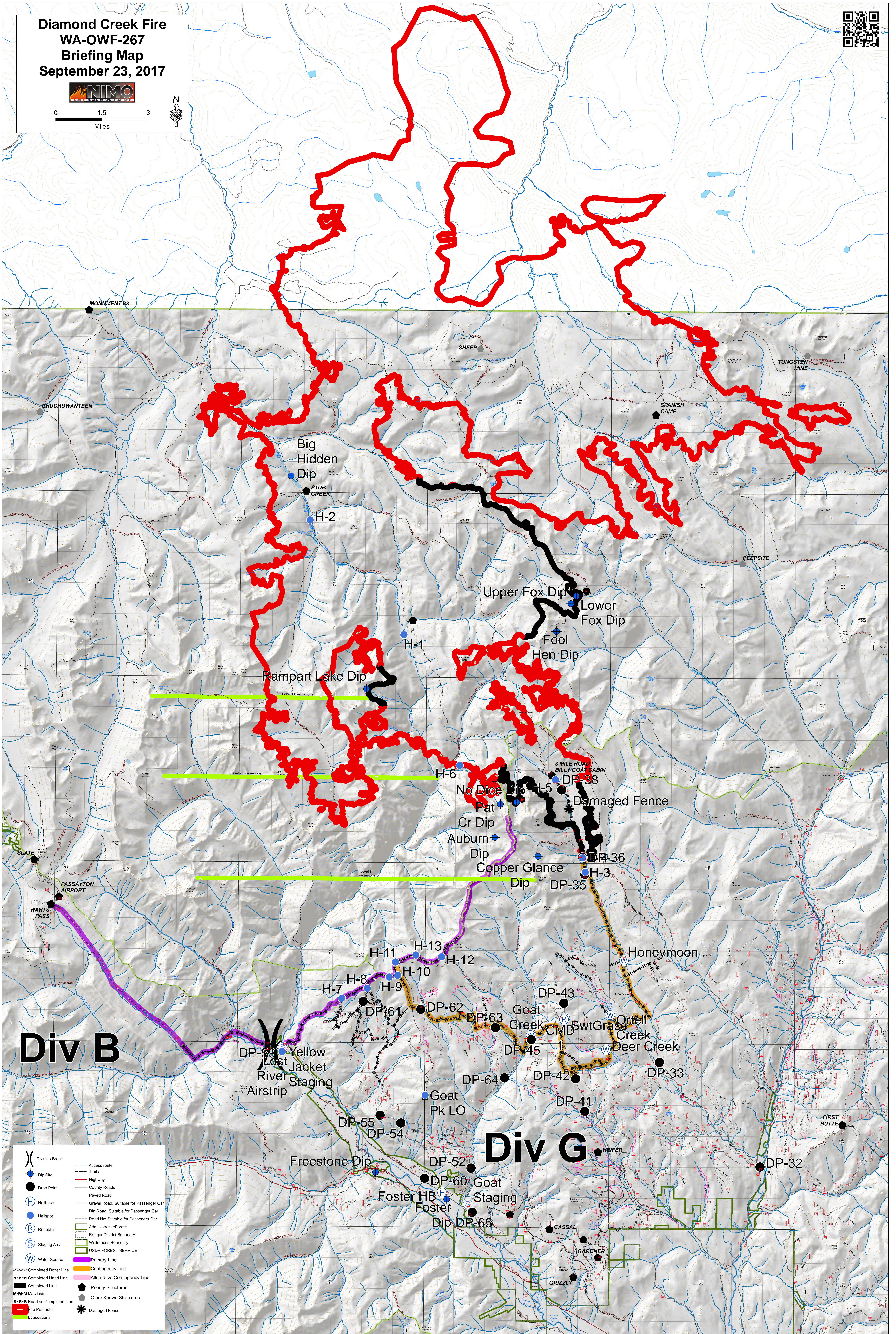
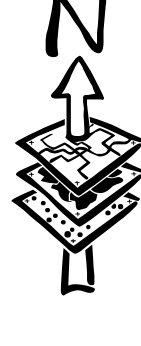


**Diamond Creek Fire
WA-OWF-267
Briefing Map
September 23, 2017**



0 1.5 3
Miles



Div B

Div G

- Division Break
- Dip Site
- Drop Point
- Helibase
- Helispot
- Repeater
- Staging Area
- Water Source
- Completed Dozer Line
- Completed Hand Line
- Completed Line
- Masticate
- Road as Completed Line
- Fire Perimeter
- Evacuations
- Access route
- Trails
- Highway
- County Roads
- Paved Road
- Gravel Road, Suitable for Passenger Car
- Dirt Road, Suitable for Passenger Car
- Road Not Suitable for Passenger Car
- Administrative Forest
- Ranger District Boundary
- Wilderness Boundary
- USDA FOREST SERVICE
- Primary Line
- Contingency Line
- Alternative Contingency Line
- Priority Structures
- Other Known Structures
- Damaged Fence